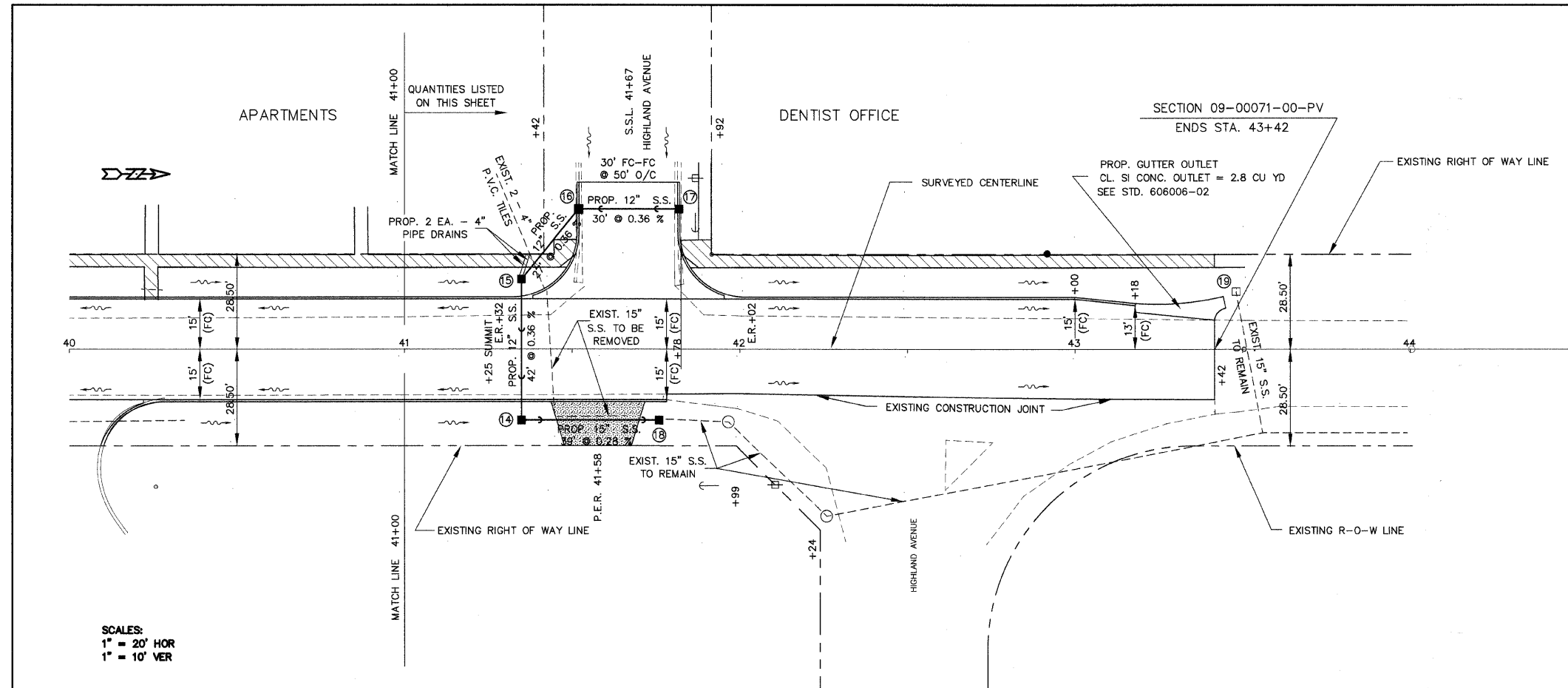
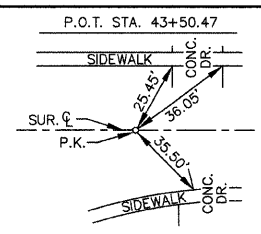


SECTION	09-00071-00-PV	TOTAL SHEETS	7	SHEET NO.	4
CITY	ROBINSON	CONT. NO.	95600	STA. 40+00	TO STA. 44+00



SCALES:
 1" = 20' HOR
 1" = 10' VER

PIPE DRAINS 4"		PAVEMENT REMOVAL		PCC PAVEMENT 7" (SPECIAL) WITH INTEGRAL CURB		DRAINAGE STRUCTURES		STORM SEWER 12" R.C.C.P. CL. A		TRENCH BACKFILL	
(15) - WEST = 2 EA. @ 6 EA. = 12'		STA. 41+00 TO STA. 43+42 = 641.2 SQ YD	STA. 41+00 TO STA. 43+42 = 794.2 SQ YD	TOTAL = 135.2 SQ YD		TOTAL = 929.4 SQ YD				P.E.R. STA. 41+58 = 20 CU YD	
		S.R.L. STA. 41+67 = 129.7 SQ YD	S.R.L. STA. 41+67 = 135.2 SQ YD	TOTAL = 264.9 SQ YD						(14) - (15) = 28 CU YD	
				TOTAL = 770.9 SQ YD						(15) - (16) = 9 CU YD	
		GUTTER REMOVAL		PCC DRIVEWAY PAVEMENT 6"						A.R. STA. 41+44 = 5 CU YD	
		I. STA. 41+52 = 30 FT		P.E.R. STA. 41+58 = 34.4 SQ YD						TOTAL = 75 CU YD	
		LT. STA. 41+82 = 31 FT		TOTAL = 34.4 SQ YD							
		TOTAL = 61 FT									
								STORM SEWER REMOVAL 15"		SIDEWALK REMOVAL	
								A.R. STA. 41+44 = 37 FT		LT. STA. 41+00 TO STA. 41+51 = 220 SQ FT	
								P.E.R. STA. 41+58 = 21 FT		LT. STA. 41+82 TO STA. 43+42 = 635 SQ FT	
								TOTAL = 58 FT		TOTAL = 855 SQ FT	
										PCC SIDEWALK 4"	
										LT. STA. 41+00 TO STA. 41+51 = 198 SQ FT	
										LT. STA. 41+82 TO STA. 43+42 = 630 SQ FT	
										TOTAL = 828 SQ FT	
										DETECTABLE WARNINGS	
										LT. STA. 41+49 = 6 SQ FT	
										LT. STA. 41+84 = 6 SQ FT	
										TOTAL = 12 SQ FT	

