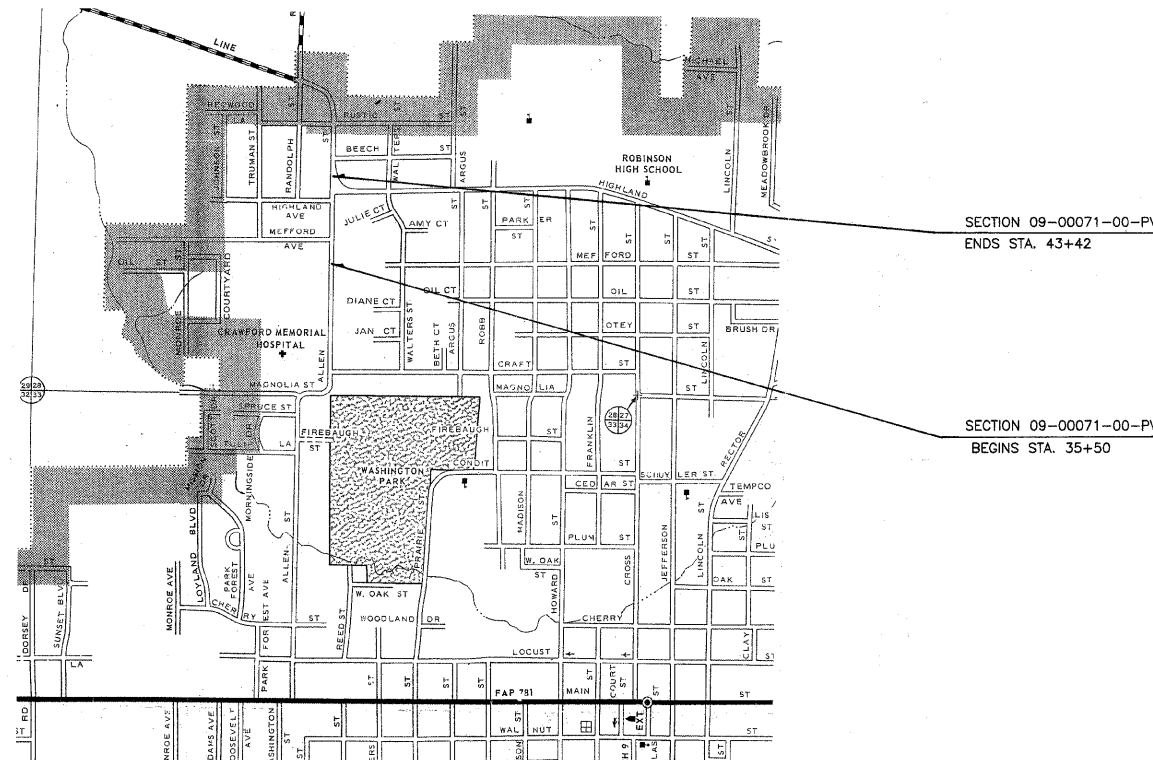


INDEX OF SHEETS

- 1 COVER SHEET
- 2 SUMMARY OF QUANTITIES & TYPICAL SECTIONS
- 3-4 PLAN PROFILE
- 5-7 CROSS SECTIONS

- STANDARDS:
- 42001-07 PAVEMENT JOINTS
 - 42401-05 CURB RAMPS FOR SIDEWALKS
 - 602301-02 INLET-TYPE A
 - 602306-02 INLET-TYPE B
 - 602401-02 MANHOLE-TYPE A
 - 604001-03 FRAME & LID-TYPE 1
 - 604036-02 GRATE-TYPE B
 - 604051-03 FRAME & GRATE-TYPE 11
 - 606001-04 CONC. CURB TY. B & COMB. CONC. C & G
 - 606006-02 OUTLET FOR CONC. C & G
 - 701801-04 SIDEWALK CLOSURE
 - 701901-01 TRAFFIC CONTROL DEVICES
 - 780001-02 PAVEMENT MARKINGS
 - BLR 10-6 PCC PAVEMENT SPECIAL
 - BLR 21-8 TRAFFIC CONTROL

STATE OF ILLINOIS
DEPARTMENT OF TRANSPORTATION
DIVISION OF HIGHWAYS
PLANS FOR PROPOSED
SURFACE TRANSPORTATION URBAN AND
AMERICAN RECOVERY AND REINVESTMENT ACT PROJECT
CITY OF ROBINSON
CRAWFORD COUNTY
SECTION 09-00071-00-PV
F.A.U. 8314
NORTH ALLEN STREET
PROJECT **MARA-5060(008)**
JOB NO. C-97-002-10



DESIGN SPEED = 30 M.P.H.
FUNCTIONAL CLASS - URBAN MINOR ARTERIAL
ADT = 2600

LOCATION MAP
APPROXIMATE SCALE: 1 INCH = 800 FEET
NET LENGTH = 792 FEET = 0.150 MILES

TOLL FREE JOINT UTILITY LOCATING
INFORMATION FOR EXCAVATORS (J.U.L.I.E.)
TELEPHONE NO. 1-800-892-0123

CONNOR & CONNOR, INC.
PROFESSIONAL DESIGN FIRM #184-000832

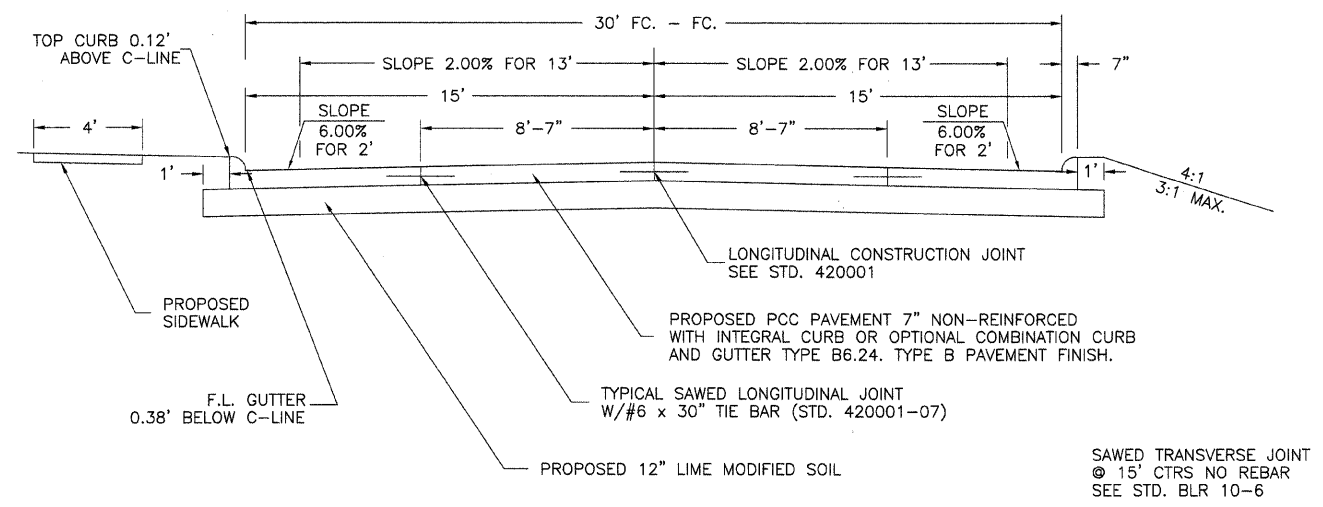
John A. Stone
ILLINOIS REGISTERED PROFESSIONAL ENGINEER # 55012
LICENSE EXPIRES NOVEMBER 30, 2009
98/17/2009

ILLINOIS DEPARTMENT OF TRANSPORTATION
APPROVED: <u>August 17th</u> , 2009 <i>Roger Lettich</i> CITY OF ROBINSON, MAYOR
PASSED: <u>August 24</u> , 2009 <i>Maureen Kautl</i> DISTRICT SEVEN ENGINEER OF LOCAL ROADS & STREETS
RELEASING FOR BID BASED ON LIMITED REVIEW <u>August 24</u> , 2009 <i>Roger L. Deschell</i> DEPUTY DIRECTOR OF HIGHWAYS, REGION FOUR ENGINEER

SUMMARY OF QUANTITIES

QUANTITY	UNIT	ITEM	CODE NO.
3160	SQ YD	PORTLAND CEMENT CONCRETE PAVEMENT 7" (SPECIAL) WITH INTEGRAL CURB	LR420125
112	CU YD	EARTH EXCAVATION	20200100
141	CU YD	FURNISHED EXCAVATION	20400800
358	CU YD	TRENCH BACKFILL	20800150
0.33	ACRE	SEEDING, CLASS 1 (SPECIAL)	25000900
2850	SQ YD	PROCESSING MODIFIED SOIL 12"	30200650
72	TON	LIME	30201500
75	TON	SUB-BASE GRANULAR MATERIAL, TYPE C	31101900
208.5	SQ YD	PORTLAND CEMENT CONCRETE DRIVEWAY PAVEMENT, 6 INCH	42300200
2370	SQ FT	PORTLAND CEMENT CONCRETE SIDEWALK 4 INCH	42400100
88	SQ FT	PORTLAND CEMENT CONCRETE SIDEWALK 6 INCH	42400300
36	SQ FT	DETECTABLE WARNINGS	42400800
2589	SQ YD	PAVEMENT REMOVAL	44000100
215.6	SQ YD	DRIVEWAY PAVEMENT REMOVAL	44000200
161	FOOT	GUTTER REMOVAL	44000400
3279	SQ FT	SIDEWALK REMOVAL	44000600
299	FOOT	STORM SEWERS, CLASS A, TYPE 1 12"	550A0050
109	FOOT	STORM SEWERS, CLASS A, TYPE 1 15"	550A0070
240	FOOT	STORM SEWERS, CLASS A, TYPE 1 18"	550A0090
33	FOOT	STORM SEWER REMOVAL 10"	55100400
313	FOOT	STORM SEWER REMOVAL 12"	55100500
116	FOOT	STORM SEWER REMOVAL 15"	55100700
12	FOOT	PIPE DRAINS 4"	60100905
1	EACH	MANHOLES, TYPE A, 4'-DIAMETER, TYPE 1 FRAME, OPEN LID	60218300
1	EACH	MANHOLES, TYPE A, 4'-DIAMETER, TYPE 8 GRATE	60219000
1	EACH	INLETS, TYPE A, TYPE 1 FRAME, OPEN LID	60234200
2	EACH	INLETS, TYPE A, TYPE 8 GRATE	60236200
4	EACH	INLETS, TYPE A, TYPE 11 FRAME AND GRATE	60236800
4	EACH	INLETS, TYPE B, TYPE 8 GRATE	60240301
2	EACH	INLETS, TYPE B, TYPE 11 FRAME AND GRATE	60240310
1	EACH	REMOVING INLETS	60500060
2.8	CU YD	CLASS SI CONCRETE (OUTLET)	60600095
1	L SUM	MOBILIZATION	67100100
1	L SUM	TRAFFIC CONTROL AND PROTECTION	70101700
1	L SUM	TRAFFIC CONTROL AND PROTECTION, STANDARD 701801	70102640
200	FOOT	PAINT PAVEMENT MARKING - LINE 4"	78001110*
184	FOOT	PAINT PAVEMENT MARKING - LINE 12"	78001150*
52	FOOT	PAINT PAVEMENT MARKING - LINE 24"	78001180*

* SPECIALTY ITEMS



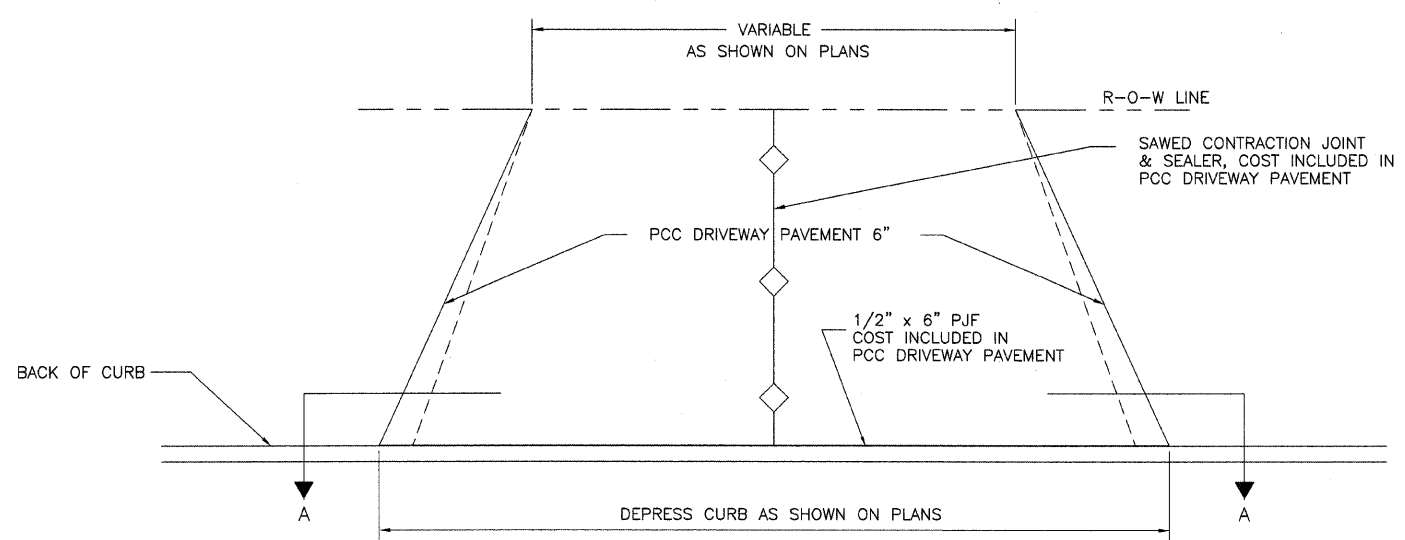
TYPICAL SECTION OF PROPOSED STREET

PAVEMENT DESIGN

2010 A.D.T. = 2600, 2020 A.D.T = 2900, P. = 2850, S.U. = 40, M.U. = 10, CLASS II STREET (73,280# DESIGN), T.F. = 0.09, PAVEMENT STRUCTURE: P.C.C. PAVEMENT SPECIAL 7 IN. WITH INTEGRAL CURB NON-REINFORCED WITH TRANSVERSE JOINTS @ 15 FT. SPACING & 12 IN. MODIFIED SOIL SUBGRADE

UTILITIES

GAS & ELECTRIC AMERENS CIPS 1-888-789-2477
 WATER ROBINSON PALESTINE WATER COMM. 1-618-544-3188
 SEWER CITY OF ROBINSON 1-618-544-8110
 CABLE TELEVISION MADIACOM 1-800-874-2991
 TOLL FREE JOINT UTILITY LOCATING INFORMATION FOR EXCAVATORS (J.U.L.I.E.) 1-800-892-0123



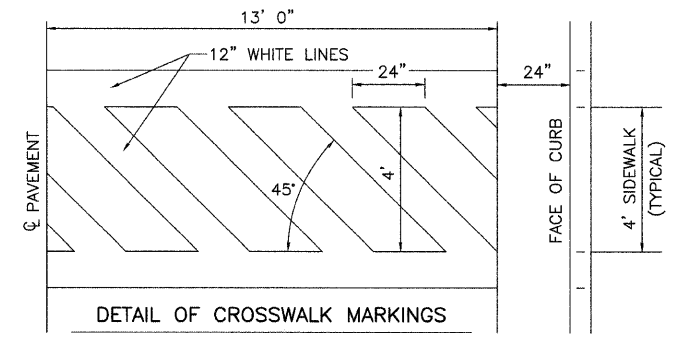
DETAIL OF PRIVATE ENTRANCE

PAINT PAVEMENT MARKING LINES

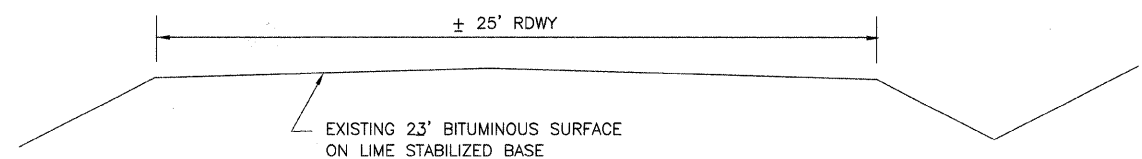
	4" LINES	12" LINES	24" LINES
(YELLOW) CENTERLINE STRIPE STA. 35+50 TO STA. 43+42	=	200 FT	
(WHITE) CROSSWALKS S.S.L. STA. 38+20	=	92 FT	
SEE DETAIL AT RIGHT S.S.L. STA. 41+67	=	92 FT	
(WHITE) STOP BARS S.S.L. STA. 38+20	=		13 FT
S.S.L. STA. 41+67	=		13 FT
RT. STA. 41+78	=		13 FT
LT. STA. 42+65	=		13 FT
TOTALS	=	200 FT	184 FT 52 FT

NOTE: LOCATE STOP BARS MINIMUM OF 4' BEHIND CROSSWALKS.

NOTE: ONLY RIGHT LANE SHOWN HERE.

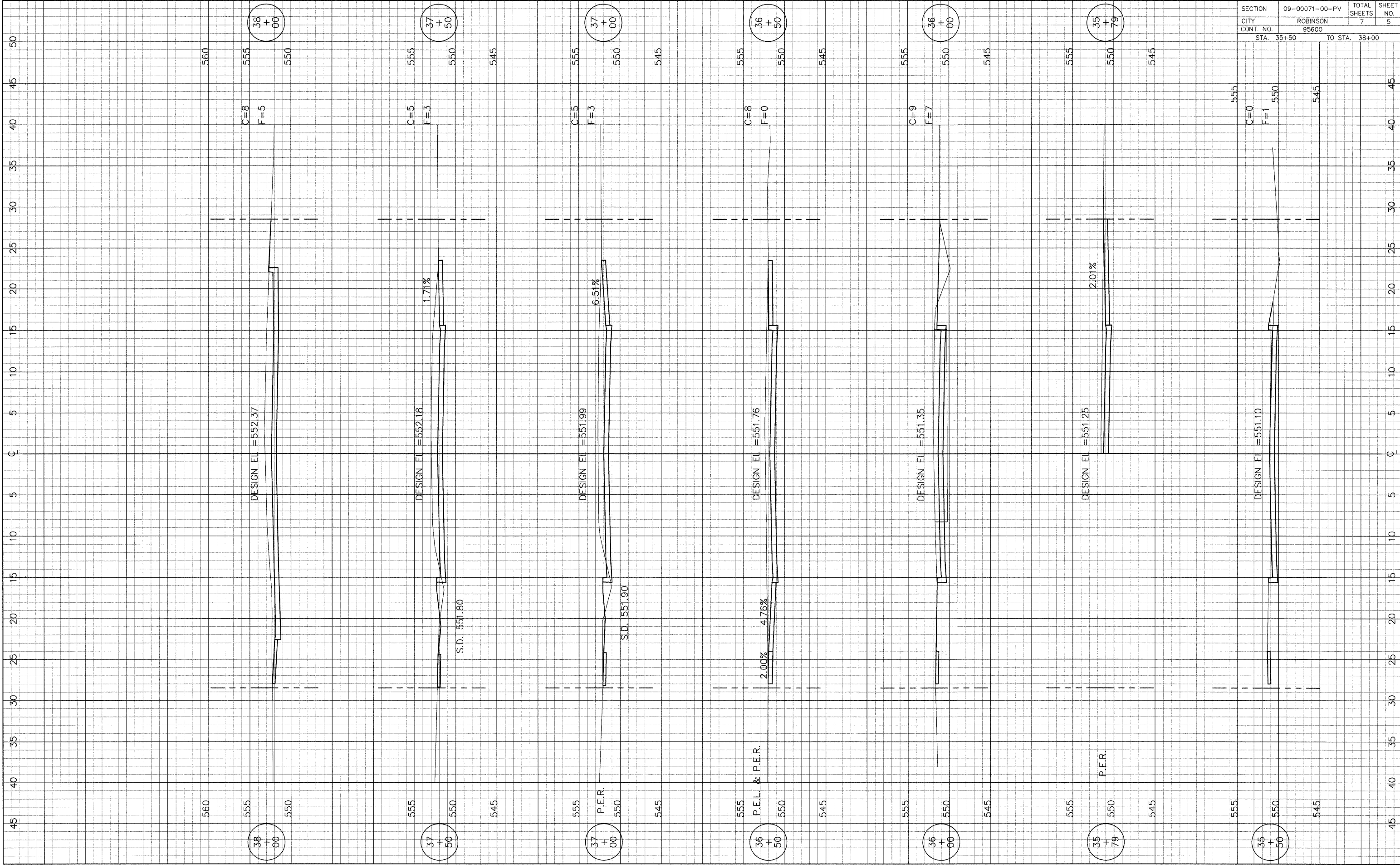


DETAIL OF CROSSWALK MARKINGS



TYPICAL CROSS SECTION OF EXISTING ROADWAY

SECTION	09-00071-00-PV	TOTAL SHEETS	7	SHEET NO.	5
CITY	ROBINSON				
CONT. NO.	95600				
STA. 35+50		TO STA. 38+00			



DESIGN EL = 552.37

DESIGN EL = 552.18

DESIGN EL = 551.99

DESIGN EL = 551.76

DESIGN EL = 551.35

DESIGN EL = 551.25

DESIGN EL = 551.10

38
+
00

37
+
50

37
+
00

36
+
50

36
+
00

35
+
79

35
+
50

C=8

F=5

C=5

F=3

C=5

F=3

C=8

F=0

C=9

F=7

C=0

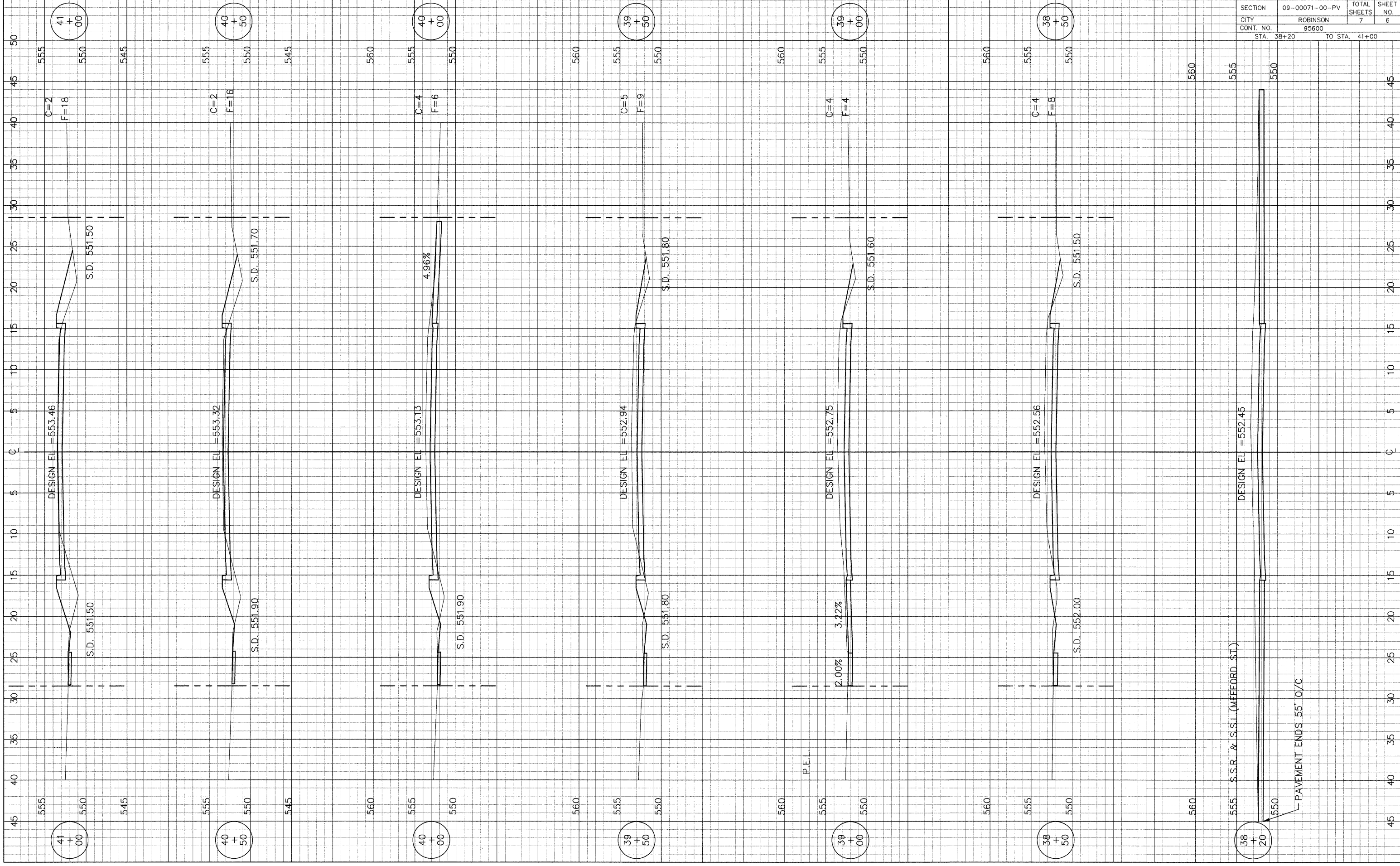
F=1

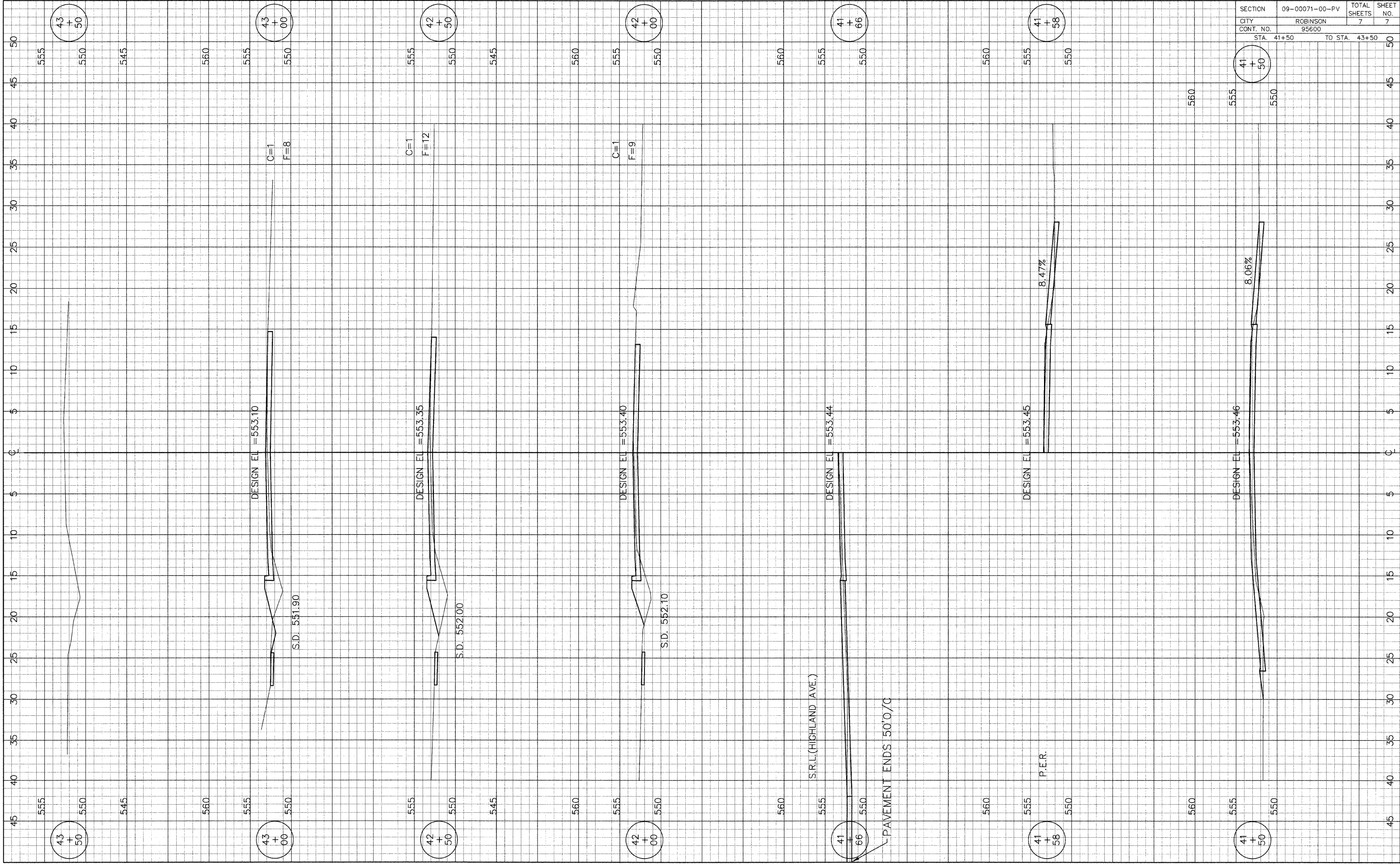
S.D. 551.80

S.D. 551.90

P.E.L. & P.E.R.

P.E.R.





SECTION	09-00071-00-PV	TOTAL SHEETS	7	SHEET NO.	7
CITY	ROBINSON				
CONT. NO.	95600				
STA.	41+50	TO STA.	43+50		

