

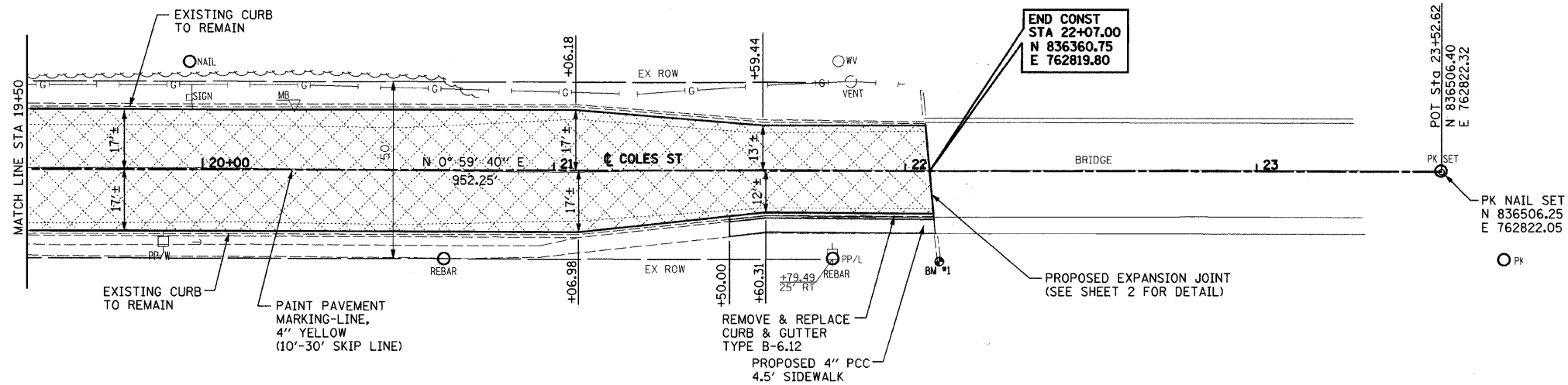
LEGEND

 PCC PAVEMENT, 7" (JOINTED)

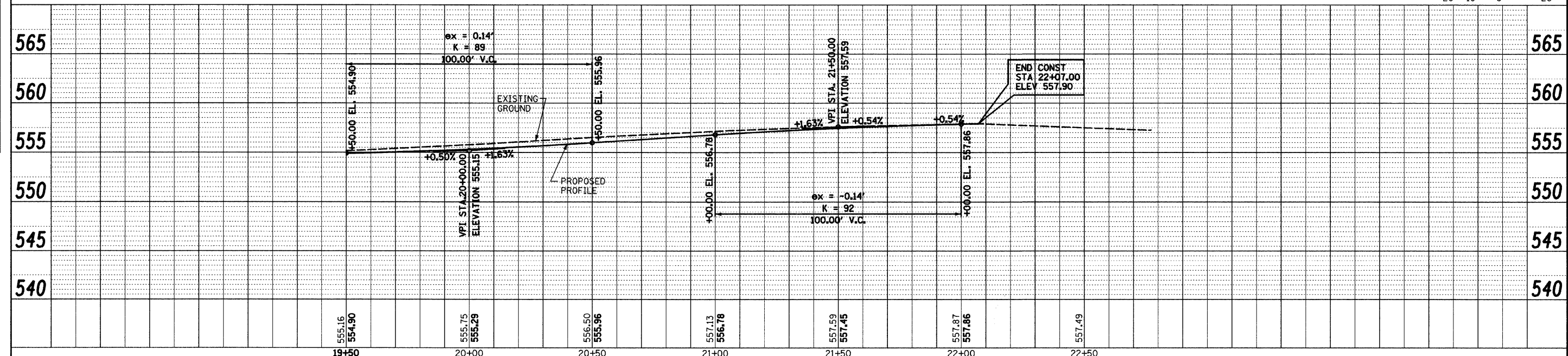
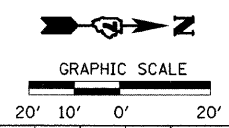
PLAN	REVISIONS	DATE
NO.	PLOTTED	
	ALIGNMENT CHECKED	
	NOTE BOOK	
	NO.	
	ROAD FILE NAME	

PROFILE	REVISIONS	DATE
NO.	PLOTTED	
	GRADES CHECKED	
	NOTE BOOK	
	NO.	
	STRUCTURE NOTATIONS CHECKED	

HURST-ROSCHE ENGINEERS, INC.
HILLSBORO, ILLINOIS 62049
(217)532-3989 FAX (217)532-3212



BM #1 STA 22+09.69, 25.52' RT
SQUARE CUT ON TOP OF S.E. WINGWALL
OF BRIDGE ON COLES ST.
ELEVATION 558.15



FILE NAME =	USER NAME = #USER#	DESIGNED - JJC	REVISED -	STATE OF ILLINOIS DEPARTMENT OF TRANSPORTATION	ROADWAY PLAN & PROFILE		F.A.J. RTE.	SECTION	COUNTY	TOTAL SHEETS	SHEET NO.
#FILEL#		DRAWN - UJJ	REVISED -		8422	09-00062-00-PV	FAYETTE	13	7		
	PLOT SCALE = #SCALE#	CHECKED - MAR	REVISED -		SCALE: 1:20		SHEET NO. 3 OF 3 SHEETS		STA. 19+50.00 TO STA. 23+52.62	CONTRACT NO. 95601	
	PLOT DATE = #DATE#	DATE - 08-21-09	REVISED -		FED. ROAD DIST. NO. 7 ILLINOIS FED. AID PROJECT						