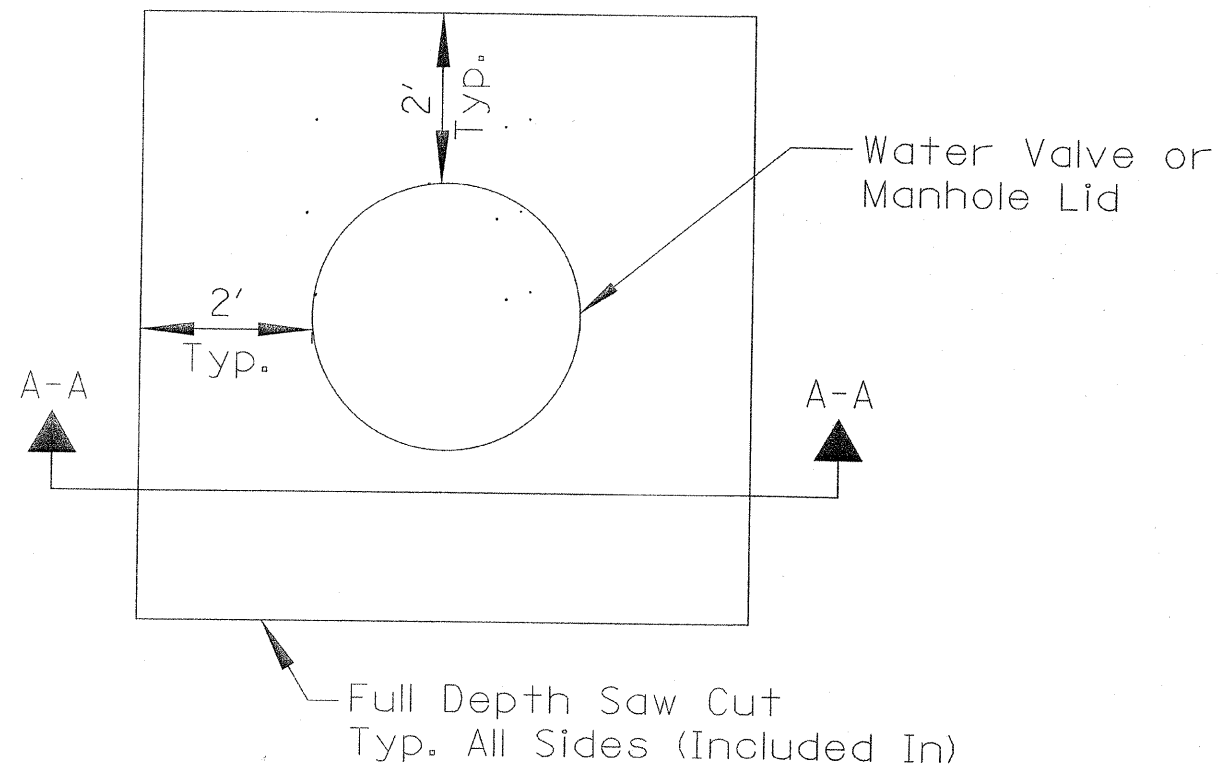
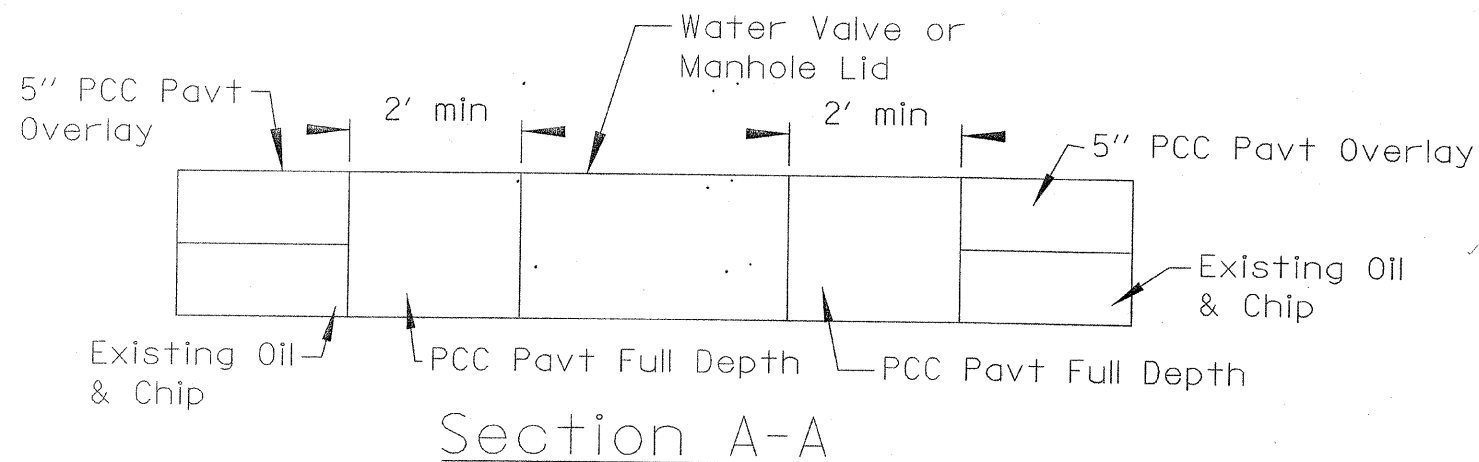


RT.	SECTION	COUNTY	TOTAL SHEETS	SHEET NO.
•	00-00220-06-RS	SHELBY	19	11
PROJECT NO. ARA - 0713 (111)				
• FAS 713				



Manholes to be Adjusted	
Sta.	O/S
36+75	CL
38+10	CL
39+51	1' RT
41+08	2' LT
43+28	8' LT
48+73	24' LT
53+41	12' RT



Water Valves to be Adjusted	
Sta.	O/S
49+24	CL
49+24	2' LT
34+30	25' RT
49+33	23' LT

Note  
SEE CONTRACT SPECIAL PROVISIONS

SHELBY COUNTY  
TOWER HILL  
00-00220-06-RS  
MANHOLES OR WATER  
VALVES TO BE ADJUSTED