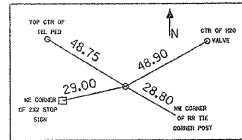


RTE.	SECTION	COUNTY	TOTAL SHEETS	SHEET NO.
*	00-00220-06-RS	SHELBY	19	15

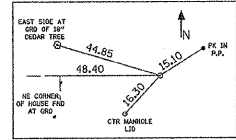
PROJECT NO. ARA - 0713 (111)

\* FAS - 713

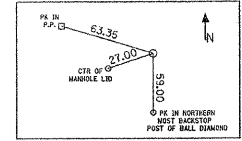
TIES TO PC CURVE #1  
STA 16+04.61



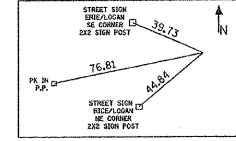
TIES TO PI CURVE #1  
STA 18+58.00



TIES TO PI CURVE #2  
STA 27+13.48



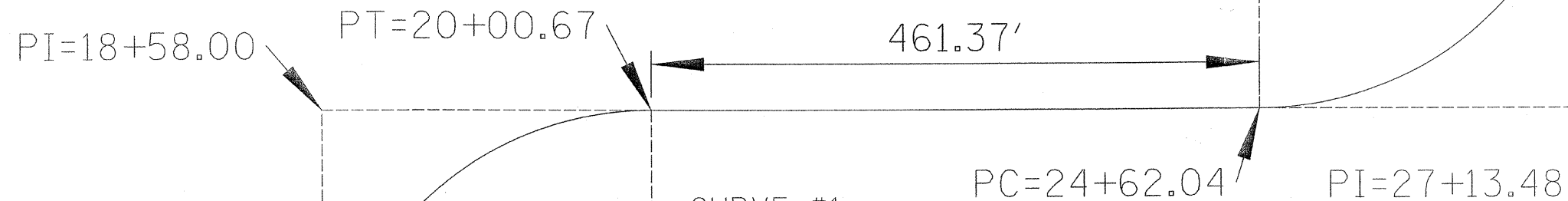
TIES TO PC CURVE #2  
STA 24+62.04



**CURVE #2**

PI STA = 27+13.48  
 $\Delta = 90^\circ 19' 46''$   
 R = 250.00  
 T = 251.44  
 E = 104.57  
 D =  $22^\circ 55' 06''$   
 L = 394.14  
 PC STA = 24+62.04  
 PT STA = 28+56.18  
 SE = 0.08 FT/FT  
 TRANSITION LENGTH = 150.00'  
 ATTAIN SE = 23+62.04 TO 25+12.04  
 REMOVE SE = 28+06.18 TO 29+56.18

PI TO PI = 966.2'



**CURVE #1**

PI STA = 18+58.00  
 $\Delta = 90^\circ 46' 16''$   
 R = 250.00  
 T = 253.39  
 E = 105.95  
 D =  $22^\circ 55' 06''$   
 L = 396.06  
 PC STA = 16+04.61  
 PT STA = 20+00.67  
 SE = 0.08 FT/FT  
 TRANSITION LENGTH = 150.00'  
 ATTAIN SE = 15+04.61 TO 16+54.61  
 REMOVE SE = 19+50.67 TO 21+00.67

BM 2 - RR SPIKE IN POWER POLE JUST NORTH OF SOUTH SCHOOL DRIVE

BM 3 - RR SPIKE IN POWER POLE 72' LT AT STA 18+50

SHELBY COUNTY  
 IN TOWN TOWER HILL  
 SECTION 00-00220-06-RS