

SIDEWALK REMOVAL

| STATION | O/S | QUANTITY | STREET |
|----------------|-------------------|----------------------|----------|
| 30+13 | 10' LT. - 15' LT. | 25.0 SQ. FT. | BENTON |
| 45+02 to 45+15 | 27' LT. | 85.0 SQ. FT. | FILLMORE |
| 45+35 to 45+40 | 27' LT. | 25.0 SQ. FT. | FILLMORE |
| TOTAL | | 135.0 SQ. FT. | |

PORTLAND CEMENT CONCRETE SIDEWALK 4 INCH

| STATION | O/S | WIDTH | QUANTITY | STREET |
|---------------|-------------------|-------|--------------------|----------|
| 30+13 | 10' LT. - 12' LT. | 5' | 10.0 SQ. FT. | BENTON |
| 30+13 | 14' LT. - 30' LT. | 5' | 80.0 SQ. FT. | BENTON |
| 30+13 | 10' RT. - 12' RT. | 5' | 10.0 SQ. FT. | BENTON |
| 30+13 | 14' RT. - 30' RT. | 5' | 80.0 SQ. FT. | BENTON |
| 45+02 - 45+11 | 27' LT. | 6.5 | 59.0 SQ. FT. | FILLMORE |
| 45+13 - 45+15 | 27' LT. | 6.5 | 13.0 SQ. FT. | FILLMORE |
| 45+35 - 45+37 | 27' LT. | 5.0 | 10.0 SQ. FT. | FILLMORE |
| 45+39 - 45+45 | 27' LT. | 5.0 | 30.0 SQ. FT. | FILLMORE |
| TOTAL | | | 292 SQ. FT. | |

DETECTABLE WARNINGS

| STATION | O/S | WIDTH | QUANTITY | STREET |
|---------------|-----------------|-------|---------------------|----------|
| 30+13 | 12' LT - 14' LT | 5' | 10.0 SQ. FT. | BENTON |
| 30+13 | 12' RT - 14' RT | 5' | 10.0 SQ. FT. | BENTON |
| 45+11 - 45+13 | 27' LT | 6.5' | 13.0 SQ. FT. | FILLMORE |
| 45+37 - 45+39 | 27' LT | 5' | 10.0 SQ. FT. | FILLMORE |
| TOTAL | | | 43.0 SQ. FT. | |

EPOXY PAVEMENT MARKING - LINE - 6 INCH

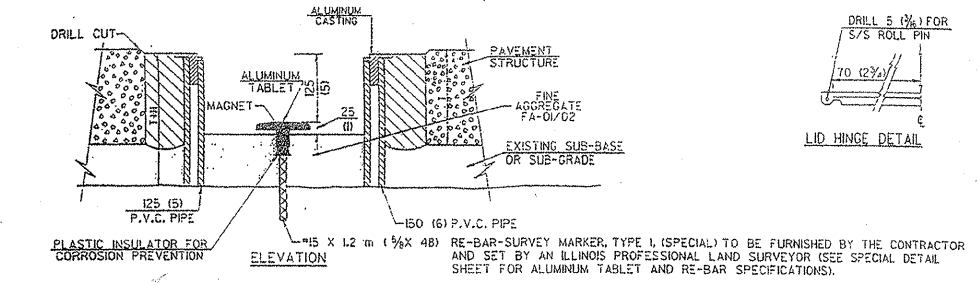
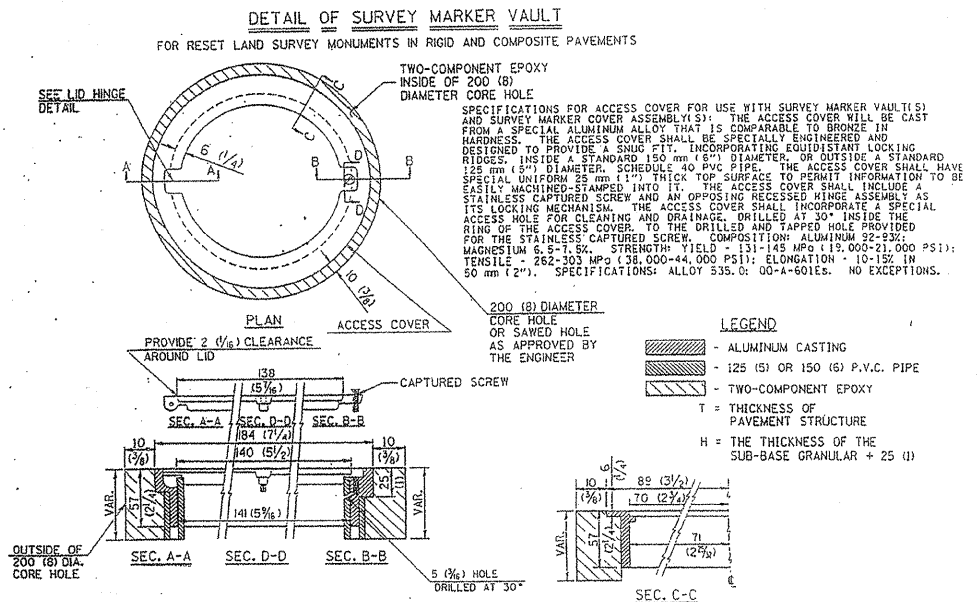
| STATION | O/S | TYPE | COLOR | QUANTITY |
|--------------|--------|-----------|-------|----------------|
| 30+10 | 10' LT | CROSSWALK | WHITE | 20.0 FT |
| 30+16 | 10' LT | CROSSWALK | WHITE | 20.0 FT |
| TOTAL | | | | 40.0 FT |

EPOXY PAVEMENT MARKING - LINE-4 INCH

| STATION | O/S | COLOR | QUANTITY |
|---------------|-------------|--------|----------------|
| 10+00 - 53+68 | CENTER LINE | YELLOW | 1100 FT |
| 10+00 - 53+68 | LT EDGELINE | WHITE | 4368 FT |
| 10+00 - 53+68 | RT EDGELINE | WHITE | 4368 FT |
| TOTAL | | | 9836 FT |

EPOXY PAVEMENT MARKING - LINE - 24 INCH

| STATION | O/S | TYPE | COLOR | QUANTITY |
|---------------|-------------|----------|-------|----------------|
| 30+17 | CL - 10' RT | STOP BAR | WHITE | 10.0 FT |
| 30+46 - 30+48 | CL - 10' LT | STOP BAR | WHITE | 10.0 FT |
| 53+56 - 53+58 | CL - 19' RT | STOP BAR | WHITE | 19.0 FT |
| TOTAL | | | | 39.0 FT |



- GENERAL NOTES**
- ALUMINUM CASTING SHALL BE EITHER PLACED OVER A 125 mm (5") P.V.C. PIPE OR INSIDE OF A 150 mm (6") P.V.C. PIPE.
 - BACKFILL WITH FINE AGGREGATE-FA-01/02.
 - WORK SHALL NOT START ON THIS ITEM UNTIL THE FINAL LIFT OF CLASS I HAS BEEN COMPLETED.
 - SEE SPECIAL PROVISION "PRESERVATION OF LAND SURVEY MONUMENTS".
 - THIS WORK WILL BE PAID FOR AT THE CONTRACT UNIT PRICE EACH FOR SURVEY MARKER VAULT WHICH PRICE SHALL INCLUDE ALL LABOR AND MATERIAL AS SPECIFIED INCLUDING CORING, EPOXY AND FA-01/02 AGGREGATE AND NO ADDITIONAL COMPENSATION WILL BE ALLOWED.
 - THE CASTING SHALL BE ANCHORED IN THE 200 mm (8") DIAMETER CORE HOLE WITH TWO-COMPONENT EPOXY CONFORMING TO APPLICABLE PORTIONS OF ARTICLE 1025.01(725.01) OF THE STANDARD SPECIFICATIONS.
 - ALL SURVEY MARKER (VAULTS) SHALL BE PLACED 6 mm (1/4") BELOW THE FINAL SURFACE.
 - THE 200 mm (8") DIAMETER CORE HOLE SHALL BE SUBJECT TO THE APPROVAL OF THE ENGINEER.
- BILL OF MATERIAL**
- ALUMINUM CASTING OF THE DIMENSIONS AND SPECIFICATIONS SHOWN OR OTHER SUBJECT TO ENGINEER'S APPROVAL OF SHOP DRAWINGS.
 125 mm OR 150 mm (5" OR 6") P.V.C. PIPE, SCHEDULE 40, ALUMINUM TABLET, STAMPED IN ACCORDANCE WITH STANDARD 2135.
 #15 X 1.2 m (1/2" X 48") RE-BAR, EPOXY AND FA-01/02 AGGREGATE.

SURVEY MARKER VAULTS

| LOCATION | QUANTITY |
|--------------------|----------|
| STA. 16+53 (2' RT) | 1 EACH |

SHELBY COUNTY
 DETAILS