

N O T E
 Underground facilities, structures and utilities have been plotted from available surveys and records and their locations must be considered approximate only. There may be others, the existence of which is presently not known. The depth of utilities is assumed to be normal and customary. Contractor shall verify location and depth of all utilities prior to construction.

STATE OF ILLINOIS
 DEPARTMENT OF TRANSPORTATION

PLANS FOR
 PROPOSED LOCAL AGENCY IMPROVEMENT

PLAN 1" = 20'
 PROFILE HOR. 1" = 20'
 PROFILE VERT. 1" = 2'
 CROSS SECTIONS HOR. 1" = 5'
 VERT. 1" = 2'

ROUTE NO.	SECTION	CITY	TOTAL SHEETS	SHEET NO.
FAU 7467	99-00021-00-RP	MT. ZION	36	1
FED. ROAD DIST. NO.	ILLINOIS	PROJECT		

CONTRACT NUMBER 95603
 PROJECT ARA-5169 (043)

VILLAGE OF MT. ZION, ILLINOIS

FLETCHER PARK BOULEVARD / BRAVES PARKWAY

FAU ROUTE 7467
 SECTION 99 - 00021 - 00 - RP
 PROJECT ARA-5169 (043)
 C - 97-005-10
 MACON COUNTY, ILLINOIS

INDEX TO SHEETS

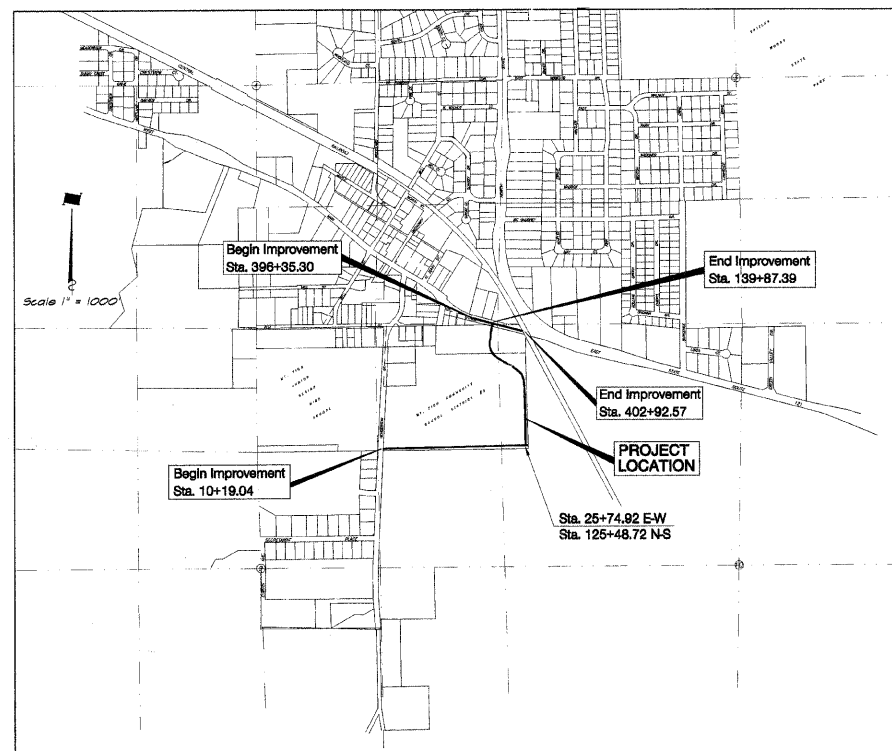
Sheet No.	Description
1.	Cover Sheet - Index to Sheets
2.	Summary & Schedule of Quantities - Tie Points - Bench Marks
3.	Schedule of Quantities & Temporary Access Detail
4.	General Notes - Legend - Typical Sections
5.	Plan and Profile - Sta. 10+00.0 to Sta. 15+00.0 (Fletcher Park Boulevard)
6.	Plan and Profile - Sta. 15+00.0 to Sta. 20+50.0 (Fletcher Park Boulevard)
7.	Plan and Profile - Sta. 20+50.0 to Sta. 26+94.92 (Fletcher Park Boulevard)
8.	Plan and Profile - Sta. 125+48.72 to Sta. 130+00.0 (Braves Parkway)
9.	Plan and Profile - Sta. 130+00.0 to Sta. 135+00.0 (Braves Parkway)
10.	Plan and Profile - Sta. 135+00.0 to Sta. 138+50.0 (Braves Parkway)
11.	Plan and Profile - Sta. 138+50.0 to Sta. 140+11.39 (Braves Parkway)
12.	Plan and Profile - Sta. 396+35.30 to Sta. 398+50.00 (Main Street)
13.	Profile Library Drive @ Sta. 137+30.00 (Sta. 246+83.97 to Sta. 300+00.00)
14.	Storm Sewer Profiles - Fletcher Park Boulevard / Braves Parkway
15.	Storm Sewer Plan and Profile - 105.2' Lt. 136+50.7 to 505.9' Lt. 137+49.8
16.	Plan and Profile - Sta. 22+81.0 Henderson to Sta. 10+30.0 FAU 7467
17.	Pavement Jointing
18.	Pavement Marking & Signage
19.	Erosion Control
20.	Traffic Control Plan
21.	Strip Map
22.	Miscellaneous Details
23.	Cross Section - Henderson St. Sta. 31+27.03 to Sta. 33+62.06
24.	Cross Section - Fletcher Park Boulevard Sta. 10+9.04 to Sta. 11+56.56
25.	Cross Section - Fletcher Park Boulevard Sta. 11+98.5 to Sta. 14+00.0
26.	Cross Section - Fletcher Park Boulevard Sta. 14+68.56 to Sta. 19+00.0
27.	Cross Section - Fletcher Park Boulevard Sta. 20+00.0 to Sta. 24+78.94
28.	Cross Section - Fletcher Park Boulevard Sta. 25+00.0 to Sta. 25+44.92
29.	Cross Section - Braves Parkway Sta. 125+61.72 to Sta. 129+00.0
30.	Cross Section - Braves Parkway Sta. 130+00.0 to Sta. 134+00.0
31.	Cross Section - Braves Parkway Sta. 135+00.0 to Sta. 137+00.0
32.	Cross Section - Braves Parkway Sta. 137+30.00 to Sta. 138+50.0
33.	Cross Section - Braves Parkway Sta. 138+96.3 to Sta. 139+49.39
34.	Cross Section - Library Drive @ Sta. 137+30.00 (Sta. 246+83.97 to Sta. 249+81.28)
35.	Cross Section - Main Street Sta. 396+25.300 to Sta. 400+00.00
36.	Cross Section - Main Street Sta. 400+44.38 to Sta. 402+62.00

UTILITIES

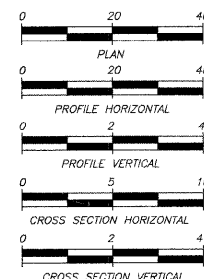
AMEREN IP 500 S. 27TH STREET DECATUR, IL 62521	GAS AND ELECTRIC	800-892-7715
VERIZON 1312 E. EMPIRE ST. P.O. BOX 2955 BLOOMINGTON, IL 61701	TELEPHONE POLES, BOXES AND CABLES	309-663-3131
COMCAST 1275 N. WATER STREET DECATUR, IL 62521	POLES, BOXES AND CABLES	217-424-8474
VILLAGE OF MT. ZION 400 W. MAIN ST. MT. ZION, IL 62549	SEWERS AND WATER MAINS	217-864-5424

IDOT STANDARDS

- 280001-04 Temporary Erosion Control Systems
- 420001-07 Pavement Joints
- 420108-04 36' Jointed PCC Pavement
- 420111-02 PCC Pavement Roundouts
- 424001-05 Curb Ramps for Sidewalks
- 542301-02 Precast Concrete Flared End Sections
- 602301-02 Inlet, Type A
- 602401-02 Manhole, Type A
- 602801-02 Precast Reinforced Concrete Flat Slab Top
- 604001-03 Frames and Lids, Type 1
- 606001-04 Concrete Curb Type B and Combination Concrete Curb and Gutter
- 701501-05 Urban Lane Closure
- 701901-01 Traffic Control Devices
- 720001-01 Sign Panel Mounting Details
- 720006-02 Sign Panel Erection Details
- 720011-01 Metal Posts for Signs, Markers & Delineators
- 780001-02 Typical Pavement Markings



LOCATION MAP
 TOTAL LENGTH OF IMPROVEMENT = 3658.82 FEET = 0.693 MILES
 NET LENGTH OF IMPROVEMENT = 3658.82 FEET = 0.693 MILES



DESIGN DESIGNATION
 276 (2020) URBAN COLLECTOR 0.111 (PCC-20)
 DESIGN SPEED = 30 MPH
 ADT = 1075 PV = 1017 SU = 50 MU = 8

BAINBRIDGE-GEE-MILANSKI & ASSOC., INC.
 1670 S. TAYLORVILLE RD.
 DECATUR, ILLINOIS 62521
 TELE: (217) 423-8800
 Illinois License 184-001255



by *Michael H. Price*
 date 8/24/09
 expires NOV.30, 2009

APPROVED 8/24/09 2009
James L. Ladd
 VILLAGE ADMINISTRATOR OF MT. ZION, ILLINOIS

PASSED 9/2 2009
Maureen D. Kaut
 DISTRICT SEVEN ENGINEER OF LOCAL ROADS & STREETS

Releasing For Bid Based on Limited Review
9/2 2009
Roger L. Dushell
 DEPUTY DIRECTOR OF HIGHWAYS, REGION FOUR ENGINEER
 STATE OF ILLINOIS
 DEPARTMENT OF TRANSPORTATION

IT'S THE LAW IN ILLINOIS
 PRIOR TO COMMENCING ANY CONSTRUCTION OR EXCAVATION, THE CONTRACTOR SHALL VERIFY THE LOCATION OF ALL UTILITIES BY CALLING:
 J.U.L.I.E. * 1-800-892-0123 or Cell 811

* Joint Utilities Locating Information for Excavators.