

ROUTE NO.	SECTION	CITY	TOTAL SHEETS	SHEET NO.
FAU 7467	99-00021-00-RP	MT. ZION	36	5
FED. ROAD DIST. NO.	ILLINOIS PROJECT			

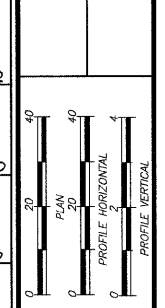
**CONTRACT NUMBER 95603**  
**PROJECT ARA-5169 (043)**

REVISIONS	NO.	BY	DATE
	1	MHP	4-4-08
	2	MHP	8-21-08

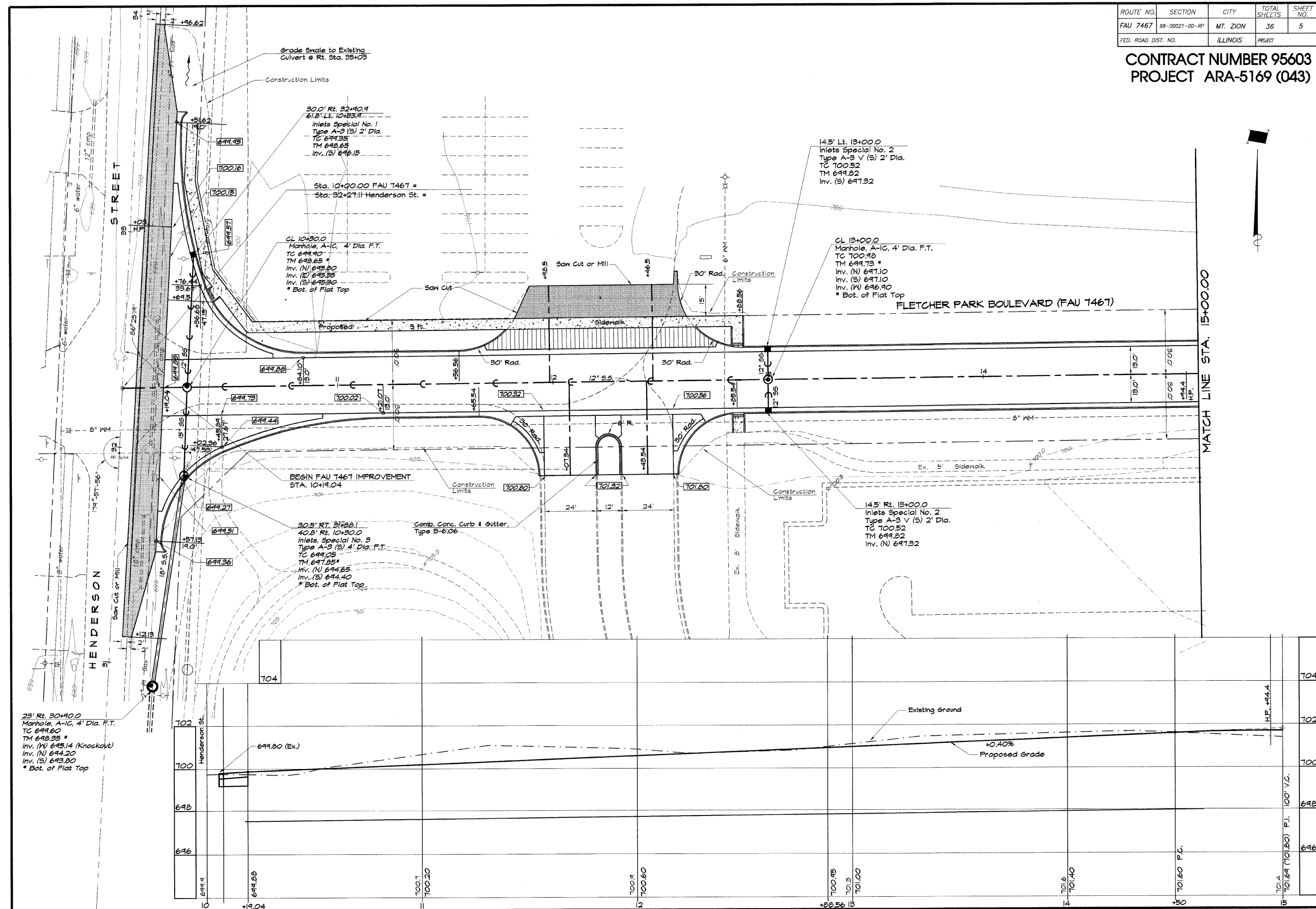
**BAINBRIDGE & ASSOCIATES, INC.**  
 Consulting Engineers  
 MILWAUKEE, WISCONSIN  
 1111 TAYLORVILLE ROAD  
 DECATUR, ILLINOIS 62526  
 License 184-001286

DESIGNED	MHP	SCALE	1" = 20'
DRAWN	Les Jenks	DATE	Aug 2008
FIELD BOOK	122	JOB NO.	08-0144

**VILLAGE OF MT. ZION, ILLINOIS**  
**FLETCHER PARK BOULEVARD / BRAVES PARKWAY**  
**ROADWAY PLAN AND PROFILE**  
**STATION 10+00.00 TO 15+00.00**



SHEET NO. **5**  
 36



**HENDERSON STREET**

**FLETCHER PARK BOULEVARD (FAU 7467)**

**MATCH LINE STA. 15+00.00**

30.0' Rt. 32+90.9  
 61.8' Lt. 10+83.9  
 Inlets Special No. 1  
 Type A-3 (S) 2' Dia.  
 TC 699.35  
 TM 698.65  
 Inv. (S) 698.15

Sta. 10+90.00 FAU 7467 =  
 Sta. 32+27.11 Henderson St. =

CL 10+90.0  
 Manhole, A-C, 4' Dia. F.T.  
 TC 699.90  
 TM 698.65 \*  
 Inv. (N) 695.80  
 Inv. (E) 695.55  
 Inv. (S) 695.30  
 \* Bot. of Flat Top

14.5' Lt. 13+00.0  
 Inlets Special No. 2  
 Type A-3 V (S) 2' Dia.  
 TC 700.52  
 TM 699.82  
 Inv. (S) 697.32

CL 13+00.0  
 Manhole, A-C, 4' Dia. F.T.  
 TC 700.98  
 TM 699.73 \*  
 Inv. (N) 697.10  
 Inv. (S) 697.10  
 Inv. (M) 696.90  
 \* Bot. of Flat Top

**BEGIN FAU 7467 IMPROVEMENT**  
 STA. 10+94.04

30.5' RT. 31+98.1  
 40.8' RT. 10+30.0  
 Inlets Special No. 3  
 Type A-3 (S) 4' Dia. F.T.  
 TC 699.05  
 TM 697.85 \*  
 Inv. (N) 694.85  
 Inv. (S) 694.40  
 \* Bot. of Flat Top

14.5' Rt. 13+00.0  
 Inlets Special No. 2  
 Type A-3 V (S) 2' Dia.  
 TC 700.52  
 TM 699.82  
 Inv. (N) 697.32

23' Rt. 30+90.0  
 Manhole, A-C, 4' Dia. F.T.  
 TC 699.60  
 TM 698.35 \*  
 Inv. (N) 695.14 (Knockout)  
 Inv. (N) 694.20  
 Inv. (S) 693.80  
 \* Bot. of Flat Top

