

ROUTE NO.	SECTION	CITY	TOTAL SHEETS	SHEET NO.
FAU 7467	99-00021-00-RP	MT. ZION	36	22
FED. ROAD DIST. NO.	ILLINOIS PROJECT			

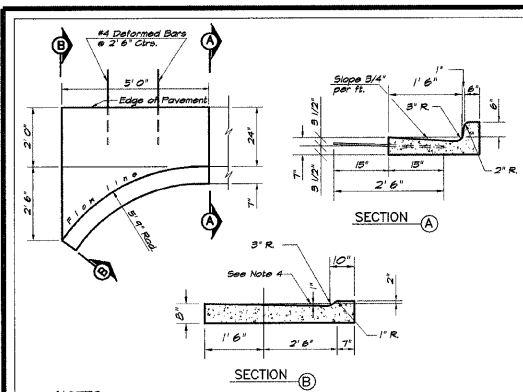
**CONTRACT NUMBER 95603**  
**PROJECT ARA-5169 (043)**

REVISIONS	NO.	BY	DATE
	1	MHP	8-24-09

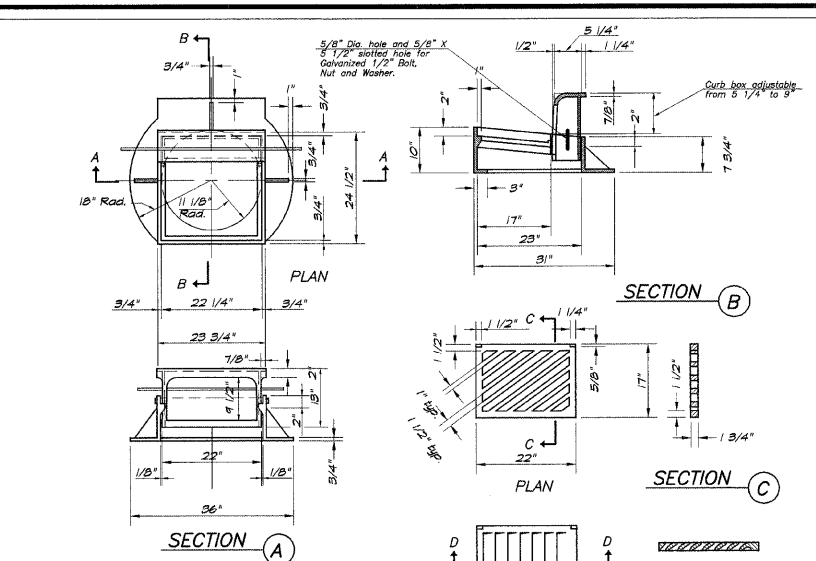
**BUNBRIDGE & ASSOCIATES, INC.**  
 Consulting Engineers  
 100 SOUTH TAYLORVILLE ROAD  
 DECATUR ILLINOIS  
 (Illinois License 184-001255)

DESIGNED	SCALE	DATE
MHP	NONE	July 2009
DRAWN	DATE	JOB NO.
Les Jenkins	July 2009	08-0144
FIELD BOOK	NO.	DATE
	22	08-0144

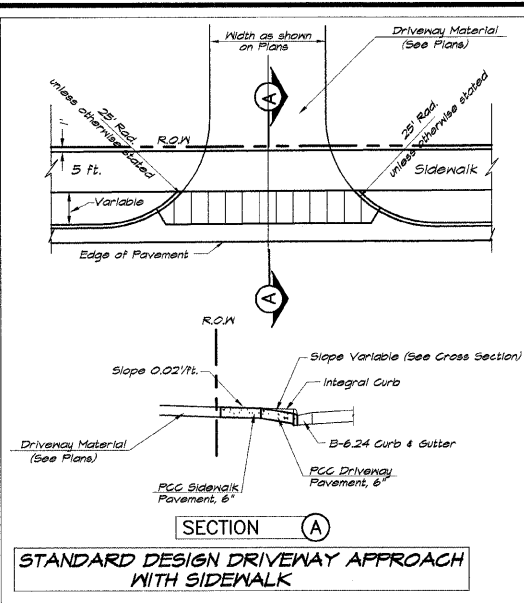
**VILLAGE OF MT. ZION, ILLINOIS**  
 FLETCHER PARK BOULEVARD / BRAVE PARKWAY  
 MISCELLANEOUS DETAILS



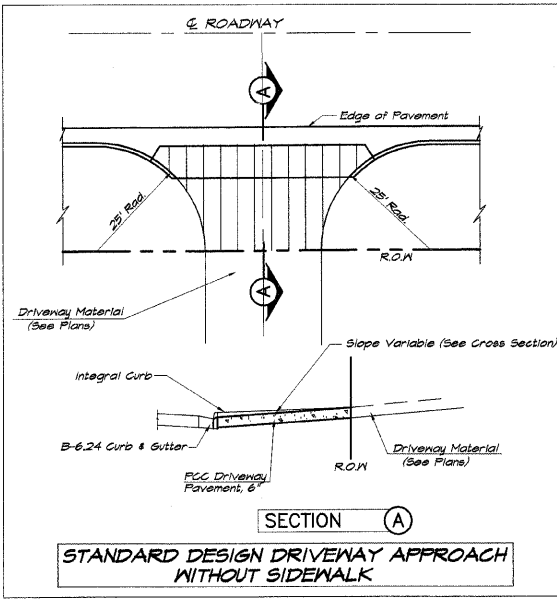
**DETAIL - GUTTER OUTLET**



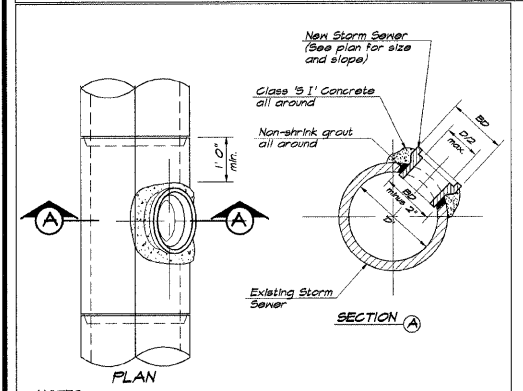
**DETAIL FRAME AND GRATE TYPE B, SPECIAL**



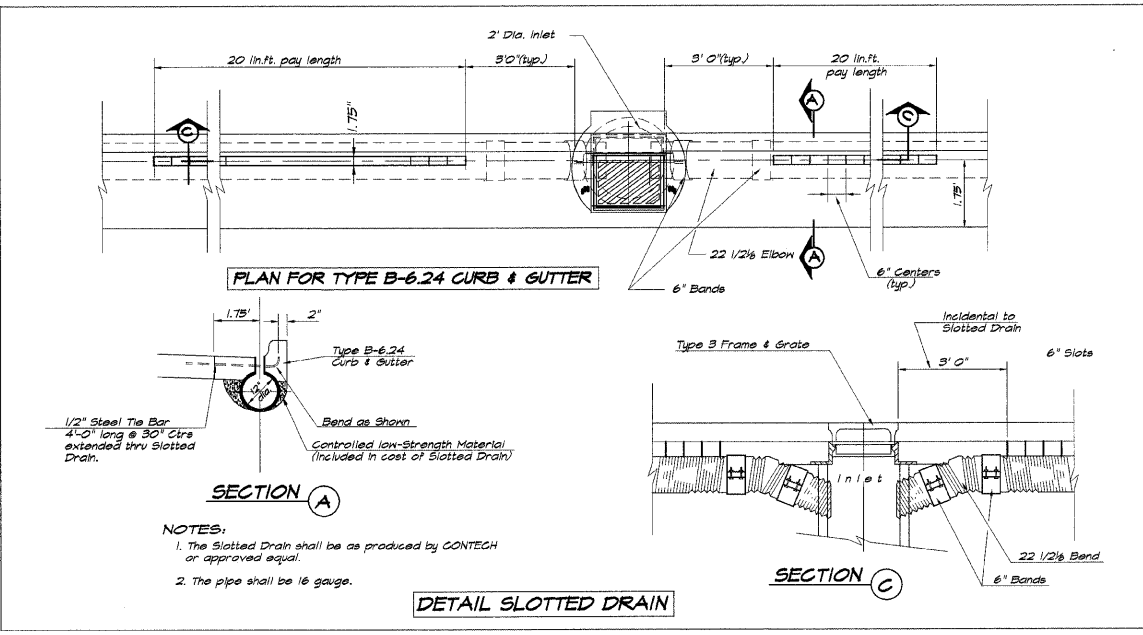
**STANDARD DESIGN DRIVEWAY APPROACH WITH SIDEWALK**



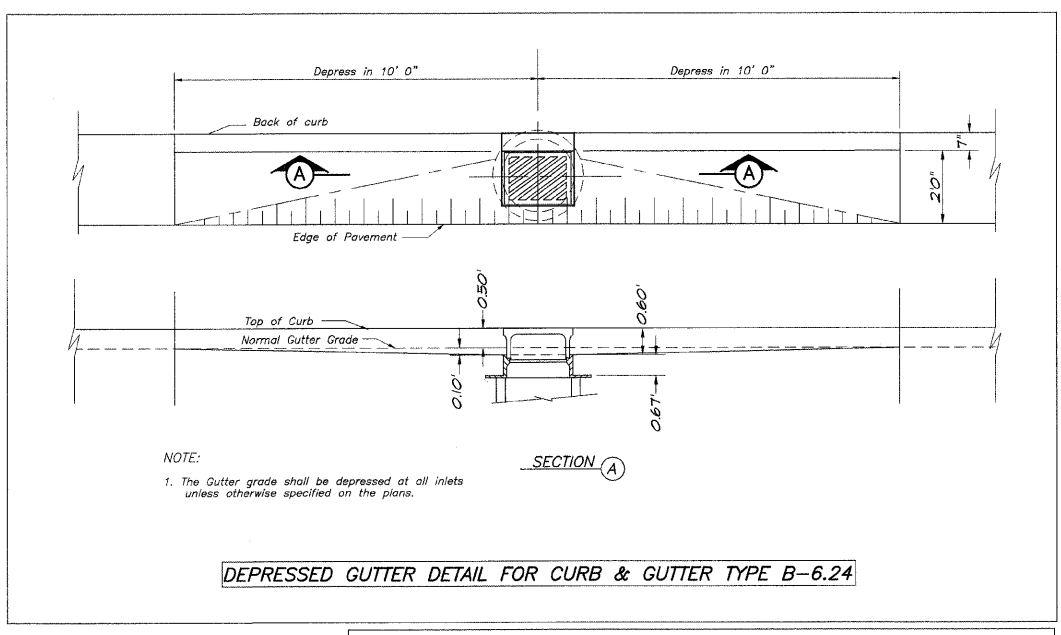
**STANDARD DESIGN DRIVEWAY APPROACH WITHOUT SIDEWALK**



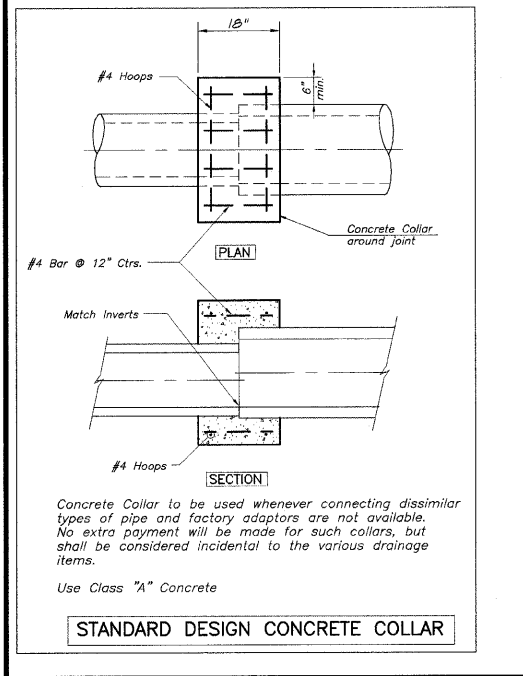
**STANDARD DESIGN STORM SEWER TAP**



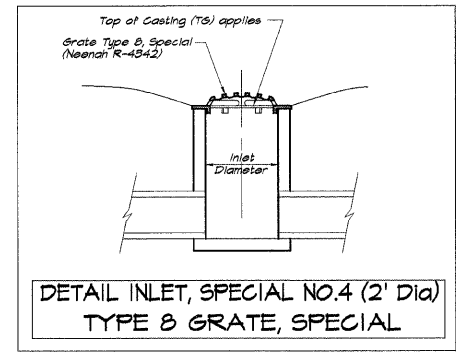
**DETAIL SLOTTED DRAIN**



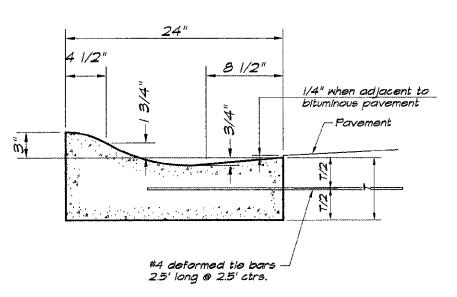
**DEPRESSED GUTTER DETAIL FOR CURB & GUTTER TYPE B-6.24**



**STANDARD DESIGN CONCRETE COLLAR**

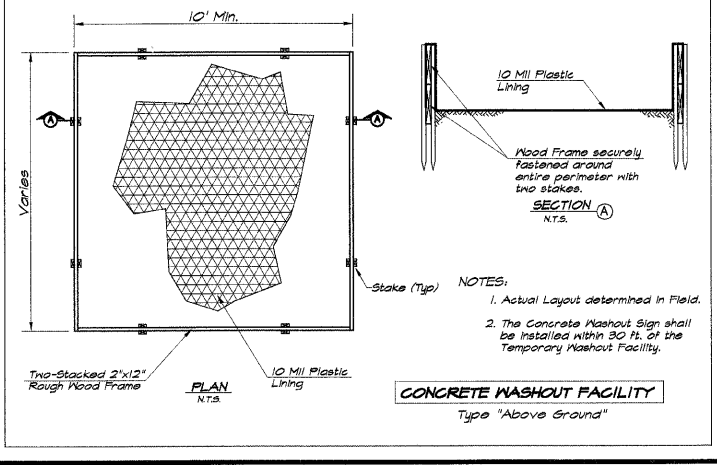


**DETAIL INLET, SPECIAL NO.4 (2' Dia) TYPE B GRATE, SPECIAL**



**DETAIL MOUNTABLE CURB AND GUTTER**

**NOTES:**  
**BAR:**  
 1. TIE BARS SHALL BE NO. 4 STEEL 2' 6" LONG PLACED AT 2' 6" CENTERS.  
 2. DOVEL BARS SHALL BE NO. 6 x 1/8" COATED SMOOTH AND SHALL BE FITTED WITH A PINCHED CAP PROVIDING 1" EXPANSION AT ALL EXPANSION JOINTS.  
 3. IF THE CURB IS NOT ADJACENT TO A CONCRETE PAVEMENT OR BASE COURSE, THE TIE BARS SHALL BE ELIMINATED.  
**JOINTS:**  
 1. CONSTRUCTION JOINTS AND EXPANSION JOINTS SHALL BE INSTALLED IN THE CURB OR CURB AND GUTTER IN PROLONGATION OF THE SAME TYPE JOINTS IN ADJACENT P.C.C. PAVEMENT OR BASE COURSE.  
 2. 1/4" PREFORMED EXPANSION JOINTS SHALL BE PROVIDED AT ALL STREET INTERSECTIONS AND 24"-36"-S40 RADIUS POINTS. THEY SHALL MATCH THE SURFACE PROFILE OF THE CURB OR CURB AND GUTTER AND EXTEND 1/2" BELOW THE BOTTOM.  
 3. WHEN CONSTRUCTED ADJACENT TO FLEXIBLE BASE PAVEMENTS, SAVED CONTRACTION JOINTS SHALL BE PROVIDED AT 20' INTERVALS.  
 4. ALL SAVED OR FORMED TRANSVERSE JOINTS SHALL BE SEALED WITH POURED JOINT SEALER AS DIRECTED BY THE ENGINEER OR IN ACCORDANCE WITH ARTICLE 406.17 OF I.D.O.T. STANDARD SPECIFICATIONS.  
**FORMS:**  
 1. THE CURB OR CURB AND GUTTER MAY BE FORMED USING AN APPROVED MECHANICAL SLIP FORM CURB MACHINE. IF SLIP FORMED, THE PLACEMENT OF ANY REQUIRED TIE BARS OR DOVEL BARS SHALL BE DONE AS DIRECTED BY THE ENGINEER.



**CONCRETE WASHOUT FACILITY**  
 Type "Above Ground"