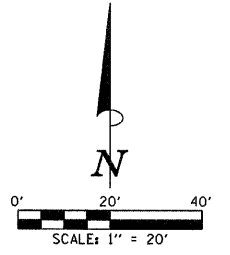


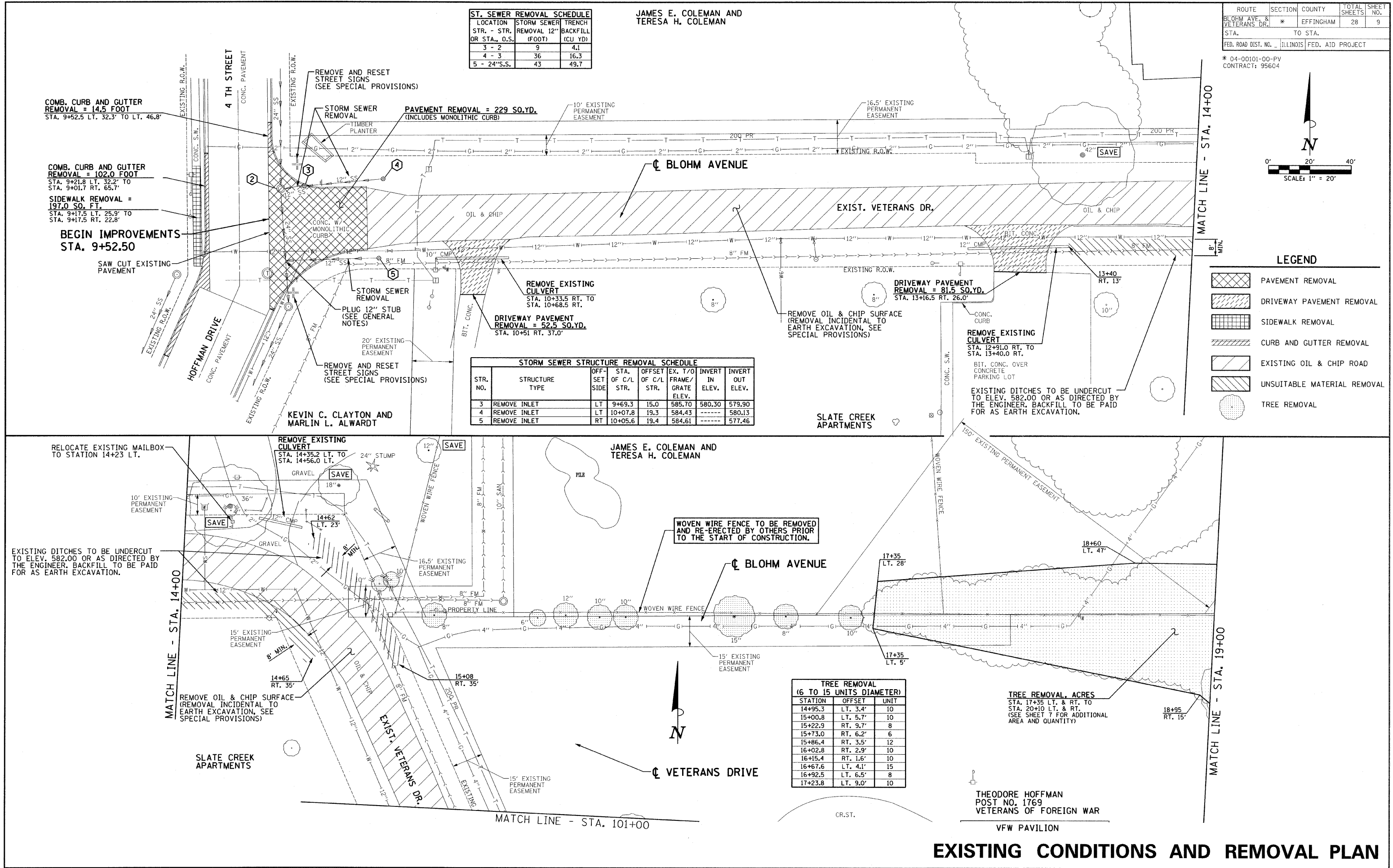
ROUTE	SECTION	COUNTY	TOTAL SHEETS	SHEET NO.
BLOHM AVE. & VETERANS DR.	*	EFFINGHAM	28	9
STA.	TO STA.			
FED. ROAD DIST. NO. ILLINOIS FED. AID PROJECT				

\* 04-00101-00-PV  
CONTRACT: 95604



LOCATION STR. - STR. OR STA., O.S.	STORM SEWER REMOVAL (FOOT)	TRENCH BACKFILL (CU YD)
3 - 2	9	4.1
4 - 3	36	16.3
5 - 24'S.S.	43	49.7

JAMES E. COLEMAN AND  
TERESA H. COLEMAN



COMB. CURB AND GUTTER  
REMOVAL = 14.5 FOOT  
STA. 9+52.5 LT. 32.3' TO LT. 46.8'

COMB. CURB AND GUTTER  
REMOVAL = 102.0 FOOT  
STA. 9+21.8 LT. 32.2' TO  
STA. 9+01.7 RT. 65.7'

SIDEWALK REMOVAL =  
197.0 SQ. FT.  
STA. 9+17.5 LT. 25.9' TO  
STA. 9+17.5 RT. 22.8'

BEGIN IMPROVEMENTS  
STA. 9+52.50

PAVEMENT REMOVAL = 229 SQ.YD.  
(INCLUDES MONOLITHIC CURB)

REMOVE EXISTING  
CULVERT  
STA. 10+33.5 RT. TO  
STA. 10+68.5 RT.

DRIVEWAY PAVEMENT  
REMOVAL = 81.5 SQ.YD.  
STA. 13+16.5 RT. 26.0'

STR. NO.	STRUCTURE TYPE	OFF-SET OF C/L SIDE	STA. OF C/L STR.	OFFSET OF C/L STR.	EX. T/O FRAME/GRATE ELEV.	INVERT IN ELEV.	INVERT OUT ELEV.
3	REMOVE INLET	LT	9+69.3	15.0	585.70	580.30	579.90
4	REMOVE INLET	LT	10+07.8	19.3	584.43	-----	580.13
5	REMOVE INLET	RT	10+05.6	19.4	584.61	-----	577.46

	PAVEMENT REMOVAL
	DRIVEWAY PAVEMENT REMOVAL
	SIDEWALK REMOVAL
	CURB AND GUTTER REMOVAL
	EXISTING OIL & CHIP ROAD
	UNSUITABLE MATERIAL REMOVAL
	TREE REMOVAL

RELOCATE EXISTING MAILBOX  
TO STATION 14+23 LT.

REMOVE EXISTING  
CULVERT  
STA. 14+35.2 LT. TO  
STA. 14+56.0 LT.

JAMES E. COLEMAN AND  
TERESA H. COLEMAN

WOVEN WIRE FENCE TO BE REMOVED  
AND RE-ERECTED BY OTHERS PRIOR  
TO THE START OF CONSTRUCTION.

EXISTING DITCHES TO BE UNDERCUT  
TO ELEV. 582.00 OR AS DIRECTED BY  
THE ENGINEER. BACKFILL TO BE PAID  
FOR AS EARTH EXCAVATION.

STATION	OFFSET	UNIT
14+95.3	LT. 3.4'	10
15+00.8	LT. 5.7'	10
15+22.9	RT. 9.7'	8
15+73.0	RT. 6.2'	6
15+86.4	RT. 3.5'	12
16+02.8	RT. 2.9'	10
16+15.4	RT. 1.6'	10
16+67.6	LT. 4.1'	15
16+92.5	LT. 6.5'	8
17+23.8	LT. 9.0'	10

TREE REMOVAL, ACRES  
STA. 17+35 LT. & RT. TO  
STA. 20+10 LT. & RT.  
(SEE SHEET 7 FOR ADDITIONAL  
AREA AND QUANTITY)

THEODORE HOFFMAN  
POST NO. 1769  
VETERANS OF FOREIGN WAR  
VFW PAVILION

# EXISTING CONDITIONS AND REMOVAL PLAN