

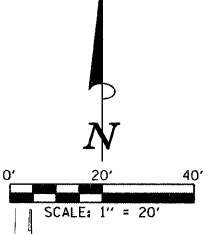
SEC. 33, T 8 N, R 6 E, 3 rd P.M.
EFFINGHAM COUNTY, ILLINOIS

JAMES E. COLEMAN AND
TERESA H. COLEMAN

PAUL E. LEPPIN AND
COLLEEN K. LEPPIN

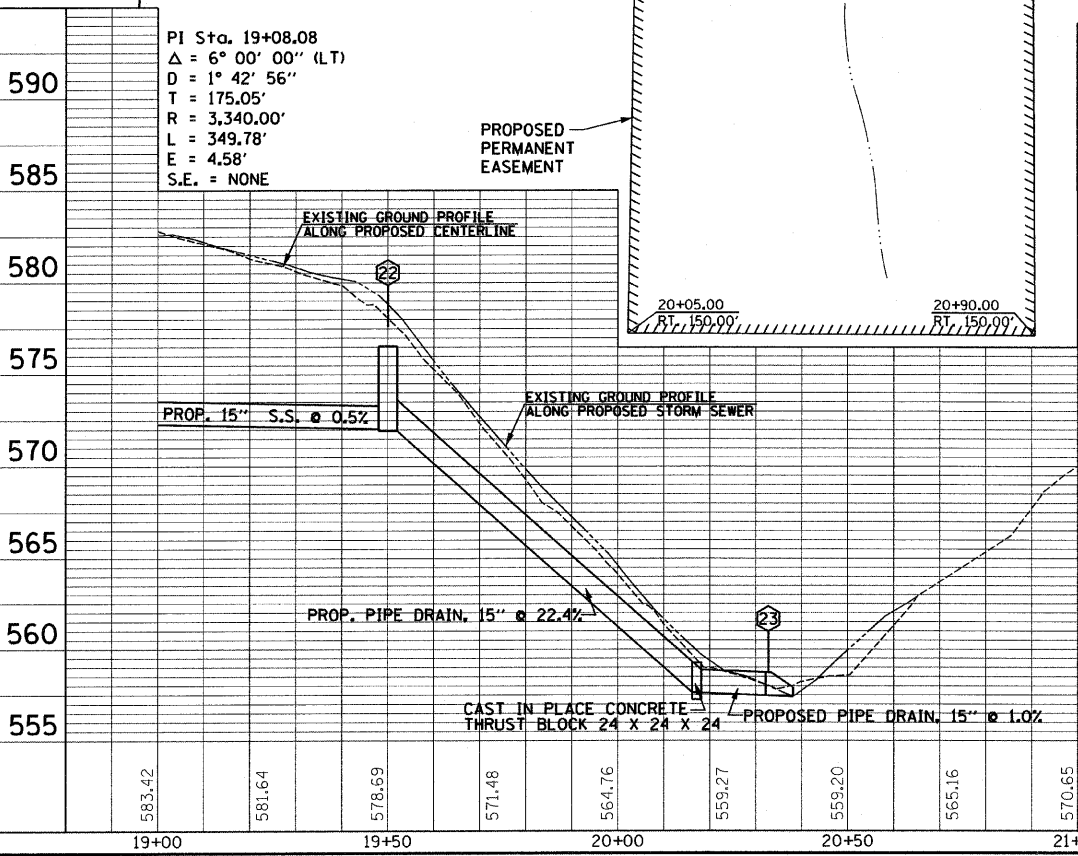
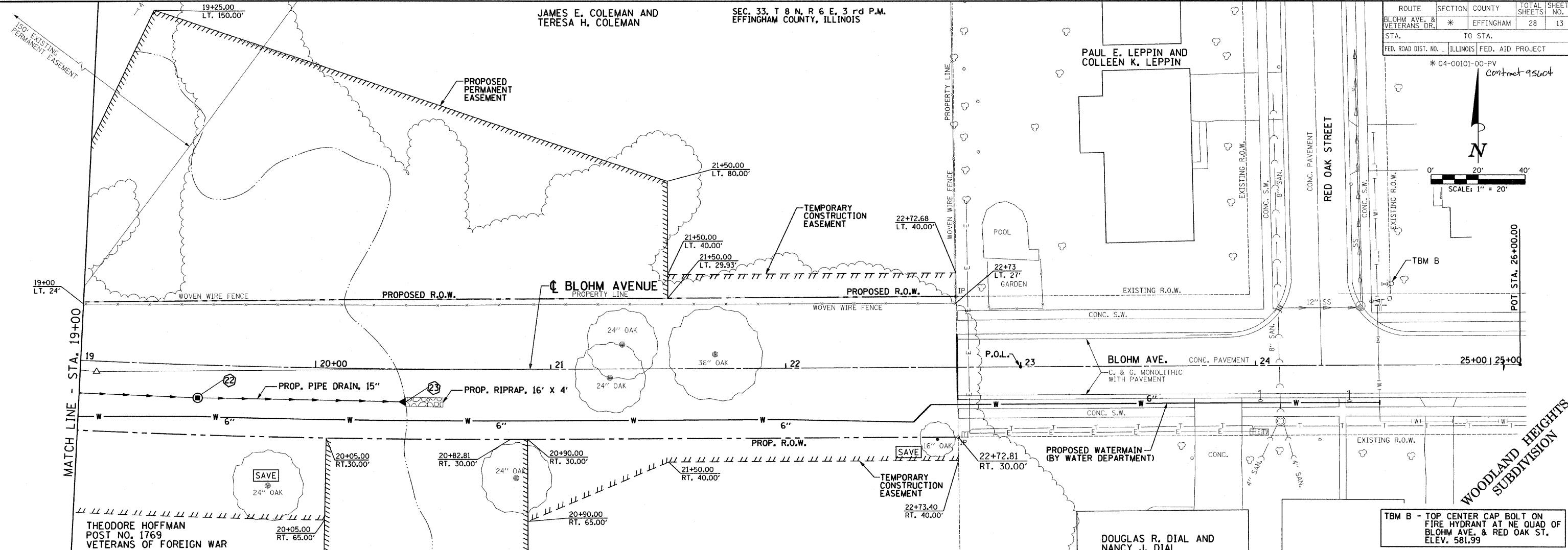
ROUTE	SECTION	COUNTY	TOTAL SHEETS	SHEET NO.
BLOHM AVE. & VETERANS DR.	*	EFFINGHAM	28	13
STA.	TO STA.			
FED. ROAD DIST. NO.	ILLINOIS		FED. AID PROJECT	

* 04-00101-00-PV
Contract 95604

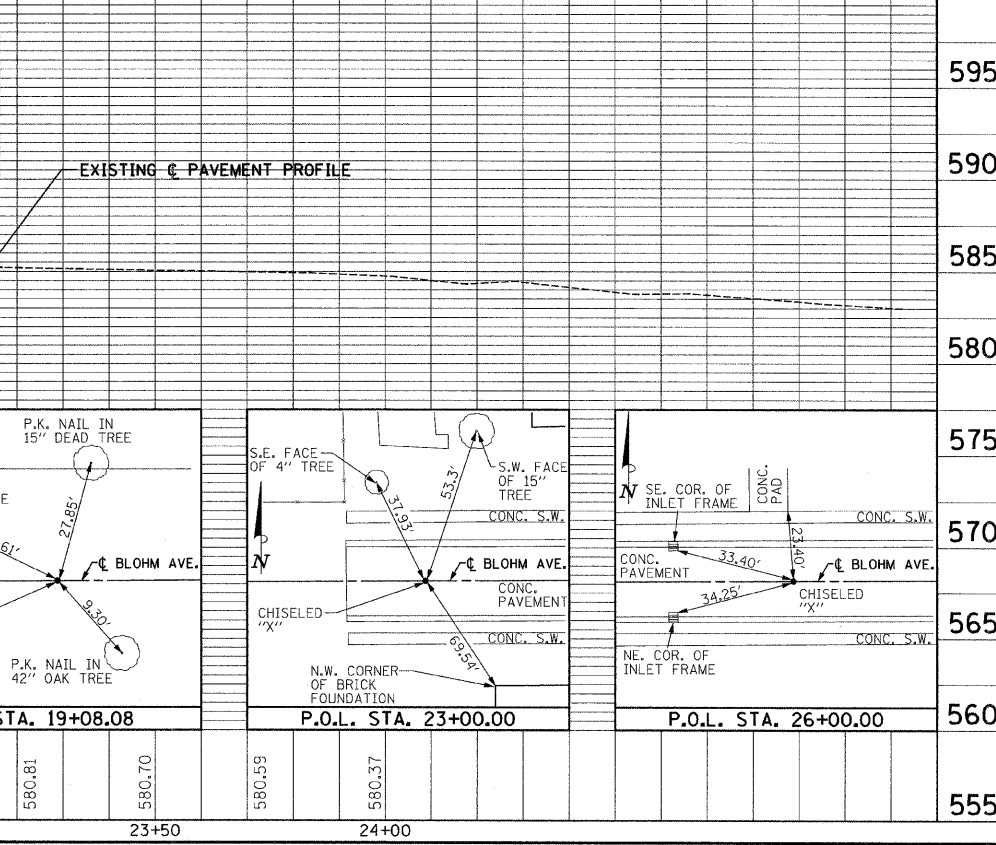


DATE	
BY	
REVISION	
NO.	

DATE	
BY	
REVISION	
NO.	



STR. NO.	STRUCTURE TYPE	OFF-SET SIDE	STA. OF C/L 2 FT. OPENING	OFFSET OF C/L 2 FT. OPENING	STA. OF C/L STR.	OFFSET OF C/L STR.	EX. T/O FRAME/GRATE ELEV.	PR. T/O FRAME/GRATE ELEV.	PR. T/O FLAT SLAB TOP ELEV.	INVERT IN ELEV.	U.S. STR. NO.	INVERT OUT ELEV.	D.S. STR. NO.
22	RD MAN 4 DIA T1 CL F&L	RT	19+50	13.25	19+50	14.25	---	577.18	576.18	572.67	21	572.57	23
23	PRC FLAR END SEC 15	RT	---	---	20+38.13	14.25	---	---	---	---	22	558.04	---



BLOHM AVENUE