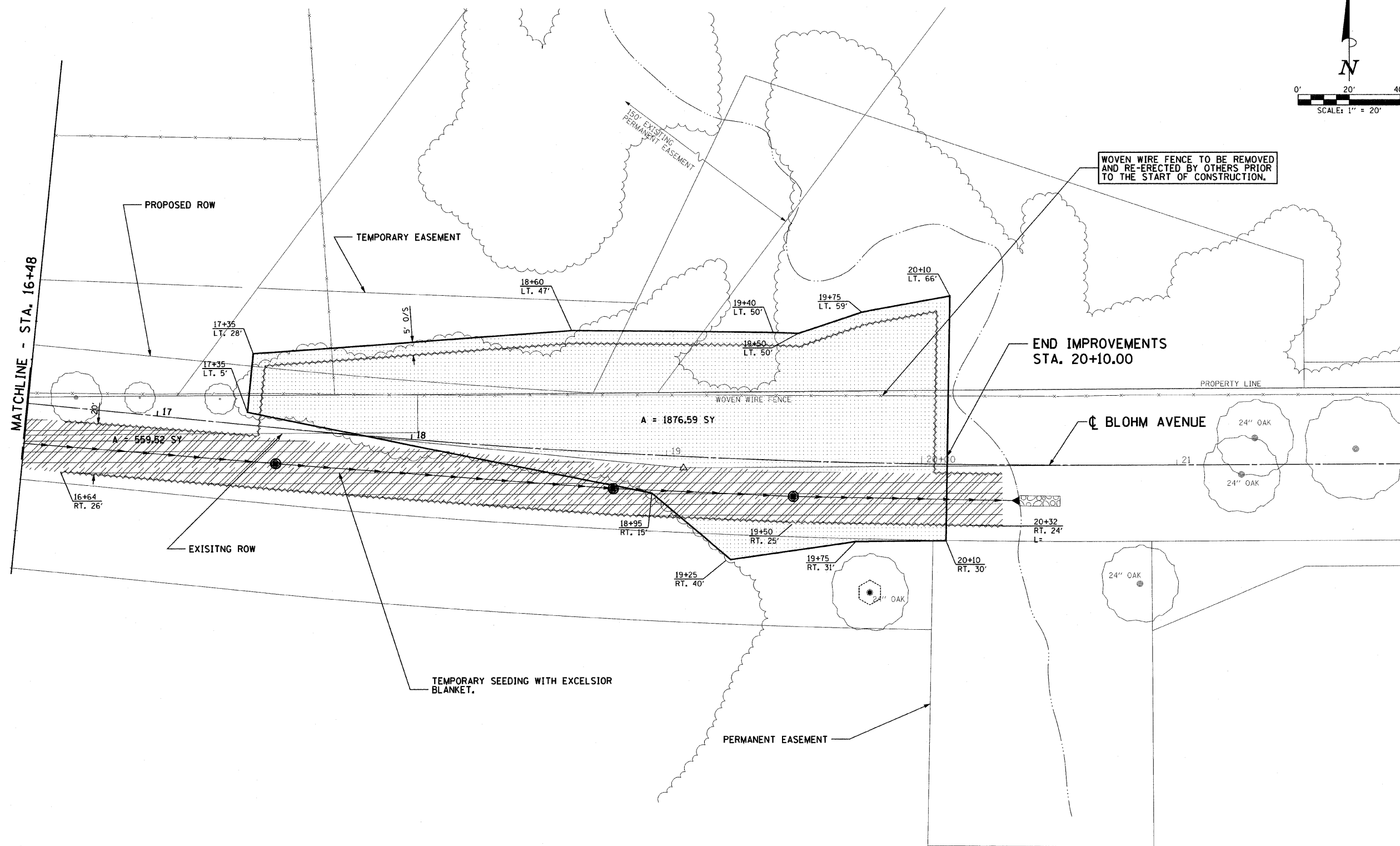
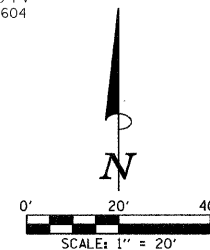


ROUTE	SECTION	COUNTY	TOTAL SHEETS	SHEET NO.
BLOHM AVE. & VETERANS DR.	*	EFFINGHAM	28	16
STA.	TO STA.			
FED. ROAD DIST. NO.	ILLINOIS	FED. AID PROJECT		

\* 04-00101-00-PV  
CONTRACT: 95604



**LEGEND**

- INLET AND PIPE PROTECTION
- PROPOSED STORM SEWER
- MANHOLE
- CATCH BASIN
- WOVEN WIRE FENCE
- PERIMETER EROSION BARRIER
- TREE PROTECTION
- TEMPORARY EROSION CONTROL SEEDING
- EROSION CONTROL BLANKET WITH TEMPORARY EROSION CONTROL SEEDING

**EROSION CONTROL PLAN - BLOHM AVE**