

STATE OF ILLINOIS
DEPARTMENT OF TRANSPORTATION
DIVISION OF HIGHWAYS
**PROPOSED
HIGHWAY PLANS**

F.A.U. ROUTE 9100
GRANITE CITY
SECTION 09-00190-00-RS
PROJECT NO. ARA-5011(274)
MADISON COUNTY
JOB NO. C-98-352-09

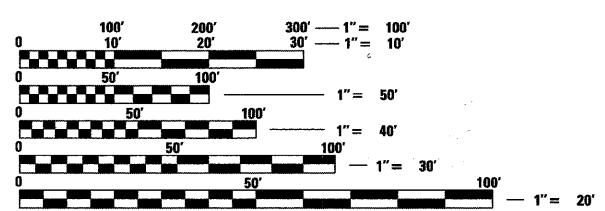
F.A.U. RTE.	SECTION	COUNTY	TOTAL SHEETS	SHEET NO.
9080	09-00190-00-RS	MADISON	20	1
FED. ROAD DIST. NO.	ILLINOIS	CONTRACT NO. 97401		

INDEX OF SHEETS

SHEET NUMBER	DESCRIPTION
1	COVER SHEET
2	INDEX OF SHEETS, HIGHWAY STANDARDS, GENERAL NOTES, AND LEGEND
3	SUMMARY OF QUANTITIES
4	TYPICAL SECTIONS - EXISTING
5	TYPICAL SECTIONS - PROPOSED
6-9	QUANTITY SCHEDULES
10-11	MAINTENANCE OF TRAFFIC - ADVANCED WARNING SIGNS & STAGES OF CONSTRUCTION
12-16	PLAN AND PROFILE SHEETS
17-19	PAVEMENT MARKING SHEETS
20	MISCELLANEOUS DETAIL SHEETS

STANDARDS

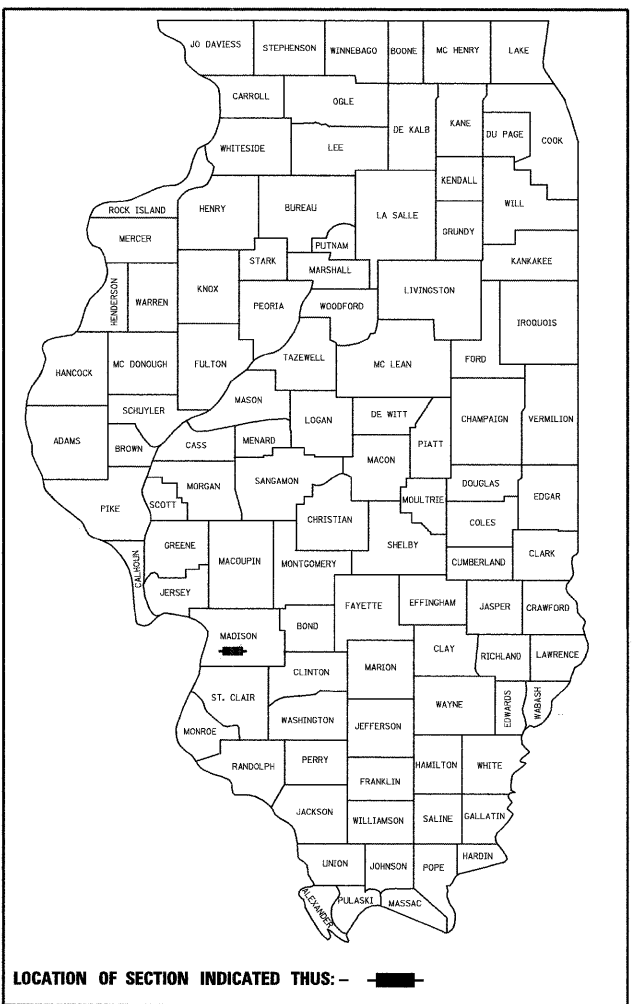
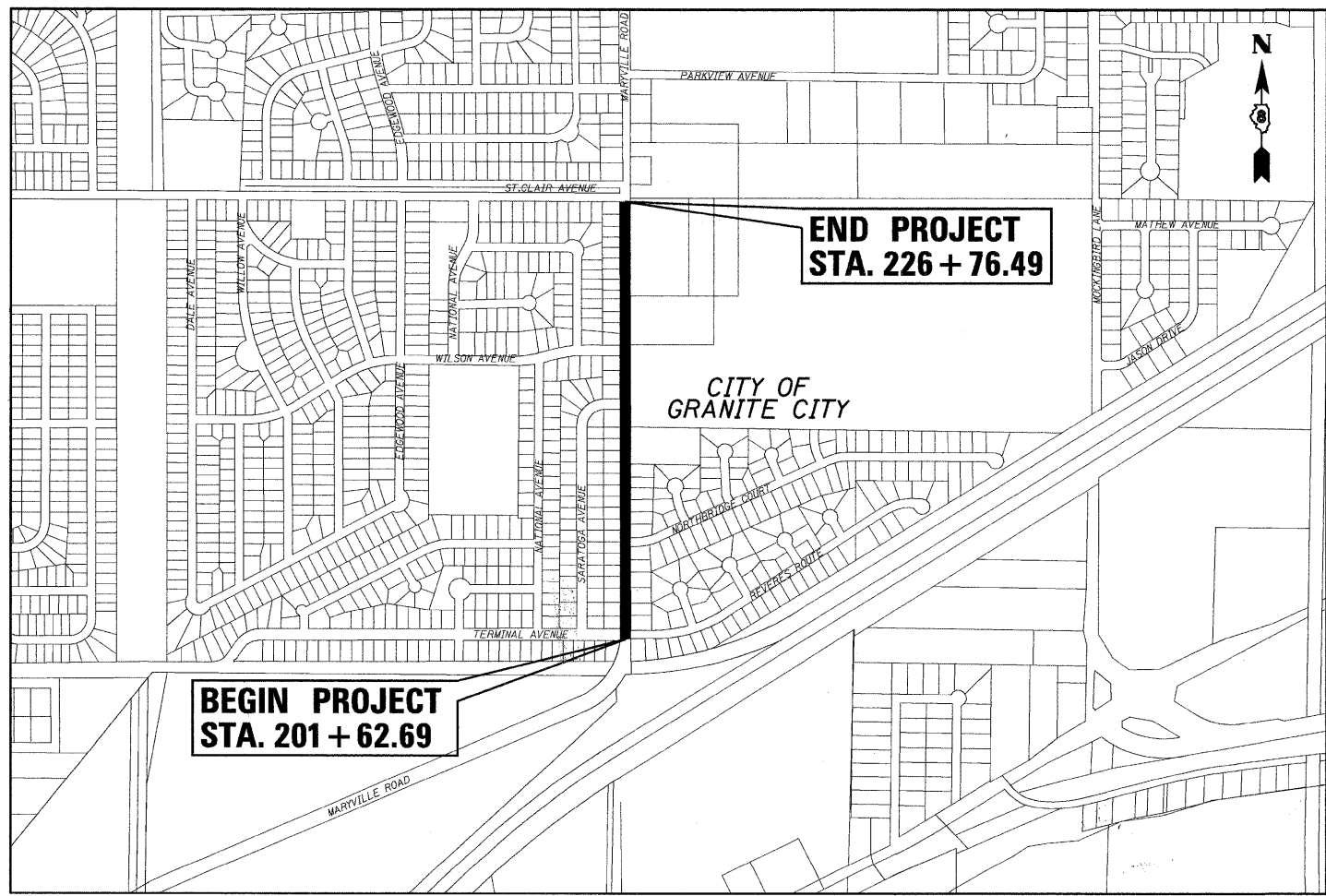
STD. NO.
000001-05
001001-02
001006
420701-02
424001-05
442101-07
606001-04
701301-03
701311-03
701606-06
701801-04
701901-01
780001-02



FULL SIZE PLANS HAVE BEEN PREPARED USING STANDARD ENGINEERING SCALES. REDUCED SIZED PLANS WILL NOT CONFORM TO STANDARD SCALES. IN MAKING MEASUREMENTS ON REDUCED PLANS, THE ABOVE SCALES MAY BE USED.

J.U.L.I.E.
JOINT UTILITY LOCATION INFORMATION FOR EXCAVATION
1-800-892-0123
OR 811

DESIGN DESIGNATION
FUNCTIONAL CLASSIFICATION: MINOR ARTERIAL
ADT: 5600 (2009) 7280 (2029)
DHV (2009): 560
DESIGN SPEED: 30 MPH



LOCATION OF SECTION INDICATED THIS: - [black rectangle] -

LOCATION MAP

SCALE: 1" = 500'

NET LENGTH OF PROJECT: 2513.8 LIN. FT. = 0.476 MILES
SECTION 16, T. 3 N., R. 9 W., 3RD P.M.

STATE OF ILLINOIS, DEPARTMENT OF TRANSPORTATION

Approved: 9-4-09
Ed Wagner
City of Granite City, Board President

Passed: 9/10/09
[Signature]
District 8 Engineer of Local Roads & Streets

Releasing for Bid Based on Limited Review: 9/10/09
[Signature]
Deputy Director of Highways, Region 5 Engineer



Brian F. Kulick 9/10/09
BRIAN F. KULICK, P.E. No. 49936 DATE
Job No. E090203

Expires 11-30-09

Juneau Associates, Inc. P.C.
CONSULTING ENGINEERS AND LAND SURVEYORS
2100 State Street, P.O. Box 1325
Granite City, Illinois 62040
Phone: (618) 877-1400 / (618) 452-5535
Fax: (618) 452-5541
100 North Research Drive
Edwardsville, Illinois 62025
Phone: (618) 659-0900 / (618) 659-0800
Fax: (618) 659-0941