

**STATE OF ILLINOIS
DEPARTMENT OF TRANSPORTATION
DIVISION OF HIGHWAYS**

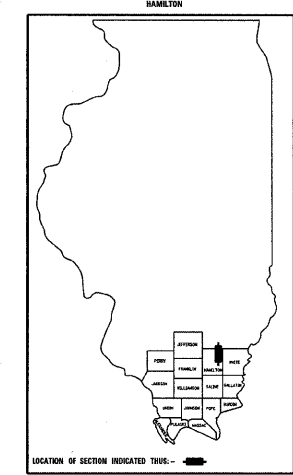
PLANS FOR PROPOSED HIGHWAY BRIDGE PROGRAM

**PROJECT NO. BROS-065(44)
SECTION 08-01115-00-BR
BEAVER CREEK ROAD DISTRICT
HAMILTON COUNTY
T.R. 376
PROPOSED STRUCTURE NO. 033-3309
JOB C-99-526-08**

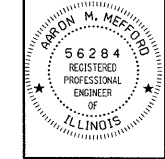
| | | | | |
|---------------------|----------------|-------------------|--------------|-----------|
| T.R. | SECTION | COUNTY | TOTAL SHEETS | SHEET NO. |
| 376 | 08-01115-00-BR | HAMILTON | 12 | 1 |
| FED. ROAD DIST. NO. | ILLINOIS | FED. AID PROJECT | | |
| PROJECT# | BROS-065(44) | CONTRACT# | 99355 | |
| JOB # | C-99-526-08 | BEAVER CREEK R.D. | | |
| LEC JOB # | H081015HM | | | |

323 W. 3RD ST.
P.O. BOX 160
MT. CARMEL, IL
62863
PHONE:
(618)-262-8651
FAX:
(618)-263-3327

405 W. STATE ST.
SUITE 1
PRINCETON, IN
47670
PHONE:
(812)-386-7611
FAX:
(812)-385-2812



PROFESSIONAL DESIGN FIRM
LAND SURVEY & PROFESSIONAL ENGINEERING CORPORATION
184-00887
(62-032435)(35-002769)



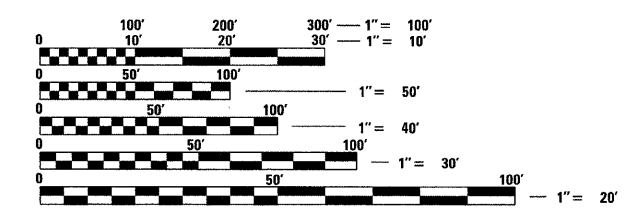
AARON M. MEFFORD
NAME
Aaron M. Mefford
SIGNATURE
1-23-09
DATE
11-30-09
EXPIRES

INDEX OF SHEETS

| SHEET NO. | DESCRIPTION |
|-----------|-------------------------------------|
| 1. | COVER SHEET & SUMMARY OF QUANTITIES |
| 2. | PLAN AND PROFILE & TYPICAL SECTIONS |
| 3.-4. | STATION CROSS SECTIONS |
| 5.-11. | BRIDGE PLANS |
| 12. | BORINGS |

HIGHWAY STANDARDS:

| | |
|-----------|--|
| 280001-04 | TEMPORARY EROSION CONTROL SYSTEMS |
| 515001-03 | NAME PLATE FOR BRIDGES |
| 701901-01 | TRAFFIC CONTROL DEVICES |
| BLR 21-8 | TYPICAL APPLICATION OF TRAFFIC CONTROL DEVICES FOR CONSTRUCTION ON RURAL LOCAL HIGHWAYS |
| BLR 22-6 | TYPICAL APPLICATION OF TRAFFIC CONTROL DEVICES FOR CONSTRUCTION ON RURAL LOCAL HIGHWAYS (TWO-LANE TWO-WAY RURAL TRAFFIC) (ROAD CLOSED TO THRU TRAFFIC) |



FULL SIZE PLANS HAVE BEEN PREPARED USING STANDARD ENGINEERING SCALES. REDUCED SIZED PLANS WILL NOT CONFORM TO STANDARD SCALES. IN MAKING MEASUREMENTS ON REDUCED PLANS, THE ABOVE SCALES MAY BE USED.

SUMMARY OF QUANTITIES

| CODE NO. | ITEM | UNIT | QUANTITY |
|--------------|---|-------|----------|
| 20200100 | EARTH EXCAVATION | CU YD | 1,496 |
| 20300100 | CHANNEL EXCAVATION | CU YD | 180 |
| 20400800 | FURNISHED EXCAVATION | CU YD | 15 |
| > 25001000 | SEEDING, CLASS 2 (SPECIAL) | ACRE | 0.5 |
| 28000300 | TEMPORARY DITCH CHECKS | EACH | 2 |
| 280001000 | AGGREGATE (EROSION CONTROL) | TON | 19 |
| 28100807 | STONE DUMPED RIPRAP, CLASS A4 | TON | 180 |
| > 28102600 | STONE RIPRAP DITCH | TON | 112 |
| 40200800 | AGGREGATE SURFACE COURSE, TYPE B | TON | 205 |
| 50100100 | REMOVAL OF EXISTING STRUCTURES | EACH | 1 |
| 50300225 | CONCRETE STRUCTURES | CU YD | 23.6 |
| 50300280 | CONCRETE ENCASEMENT | CU YD | 2.8 |
| 50400505 | PRECAST PRESTRESSED CONCRETE DECK BEAMS (27" DEPTH) | SQ FT | 1,704 |
| 50800105 | REINFORCEMENT BARS | POUND | 2,670 |
| * 50900205 | STEEL RAILING, TYPE S1 | FOOT | 137 |
| 51201600 | FURNISHING STEEL PILES HP12X53 | FOOT | 352 |
| 51202305 | DRIVING PILES | FOOT | 352 |
| 51500100 | NAME PLATES | EACH | 1 |
| 67100100 | MOBILIZATION | L SUM | 1 |
| > * 78201000 | TERMINAL MARKER - DIRECT APPLIED | EACH | 4 |

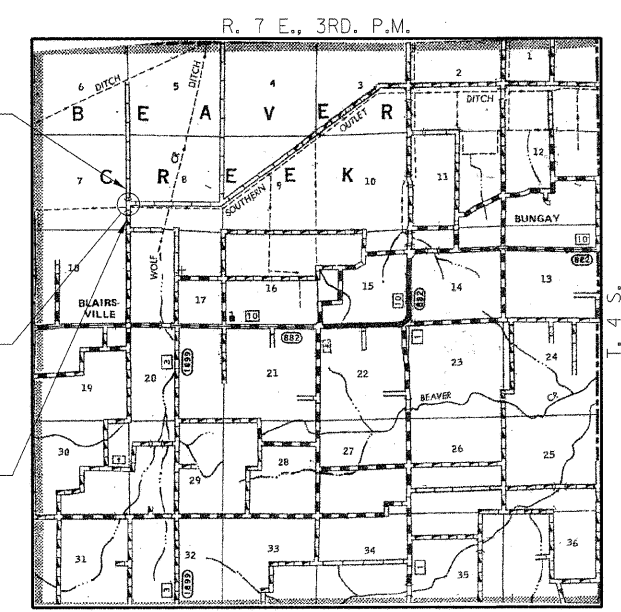
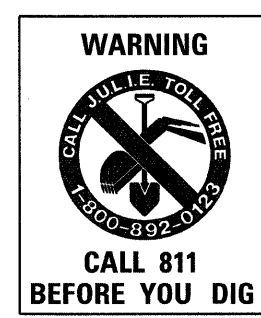
> SEE SPECIAL PROVISIONS
* SPECIALTY ITEMS

CONTRACT NO. 99355

IMPROVEMENT ENDS STATION 6+00

STA. 5+00
PRECAST PRESTRESSED CONCRETE DECK BEAM BRIDGE, SINGLE SPAN 71'-0"
24'-0" RDWY.; SKEW = 0°
EXISTING STRUCTURE NO. 033-3120
PROPOSED STRUCTURE NO. 033-3309

IMPROVEMENT BEGINS STATION 2+40



LOCATION MAP

APPROXIMATE SCALE: 0 1 MILE
NET LENGTH OF SECTION = 360 FEET = 0.068 MILES

| HAMILTON COUNTY | |
|---|--|
| APPROVED | <i>January 27, 20 09</i> <i>Kim Debb</i> COUNTY ENGINEER |
| APPROVED | <i>January 30, 20 09</i> <i>Vivian R. Jack</i> TOWNSHIP COMMISSIONER |
| PASSED | <i>8/18, 20 09</i> <i>Richard W. Malcher</i> DISTRICT NINE ENGINEER OF LOCAL ROADS & STREETS |
| Releasing For Bid Based on Limited Review | <i>8/25, 20 09</i> <i>Mary C. Lamic</i> DEPUTY DIRECTOR OF HIGHWAYS REGION FIVE ENGINEER STATE OF ILLINOIS DEPARTMENT OF TRANSPORTATION |

HAMPTON, LENZINI & RENWICK, INC.
CIVIL & STRUCTURAL ENGINEERS
LAND SURVEYORS

3085 STEVENSON DRIVE, SUITE 201
SPRINGFIELD, ILLINOIS 62703
(217) 546-3400

ELGIN • SPRINGFIELD

PROJECT NUMBER: 08.0104.130 DATE: 01/21/09

TOWNSHIP ROUTE 376
OVER SOUTHERN OUTLET
HAMILTON COUNTY, ILLINOIS

SHEET TITLE:
TITLE SHEET

| | |
|-----------|-----------|
| SCALE: | VARIABLES |
| BY: | AMM |
| DATE: | 1/23/09 |
| REV: | |
| 1 | OF 12 |
| SHEETS | |
| SHEET NO. | |
| 1 | |