

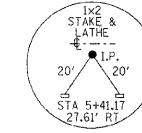
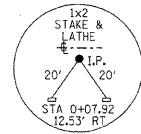
**GENERAL NOTES:**

THIS SECTION SHALL BE CONSTRUCTED IN ACCORDANCE WITH THE PLANS, SPECIAL PROVISIONS AND "STANDARD SPECIFICATIONS FOR ROAD AND BRIDGE CONSTRUCTION", ADOPTED JANUARY 1, 2007.

THE WORK INVOLVED ON THIS SECTION CONSISTS OF THE REMOVAL OF THE EXISTING STRUCTURE, THE CONSTRUCTION OF A 71 FOOT LONG SINGLE SPAN PRECAST, PRESTRESSED CONCRETE DECK BEAM BRIDGE, EARTH APPROACHES, AGGREGATE SURFACE COURSE AND OTHER MISCELLANEOUS ITEMS NECESSARY TO COMPLETE THIS SECTION.

ALL ELEVATIONS ARE BASED ON U.S.G.S. MEAN SEA LEVEL DATUM.

IT SHALL BE THE CONTRACTOR'S RESPONSIBILITY TO CONTACT ALL THE UTILITIES, AFFECTING THE PROJECT, PRIOR TO CONSTRUCTION.



NOTE: CONSTRUCTION TRANSITION  
STA. 2+40 TO STA 2+90  
STA 5+50 TO STA 6+00  
ALL QUANTITIES ARE INCLUDED IN THE PROPOSAL

T.R.	SECTION	COUNTY	TOTAL SHEETS	SHEET NO.
376	08-01115-00-BR	HAMILTON	12	2
FED. ROAD DIST. NO. 9 ILLINOIS		FED. AID PROJECT		
PROJECT# BROS-065044		CONTRACT# 99355		
JOB NO. C-99-526-08		SOUTHERN OUTLET		
LEC JOB # H081015HW				

323 W. 3RD ST.  
P.O. BOX 160  
MT. CARMEL, IL  
62863  
PHONE:  
(618)-262-8651  
FAX:  
(618)-263-3327

405 W. STATE ST  
SUITE 1  
PRINCETON, IN  
47670  
PHONE:  
(812)-386-7611  
FAX:  
(812)-385-2812



PROFESSIONAL DESIGN FIRM  
LAND SURVEY &  
PROFESSIONAL  
ENGINEERING  
CORPORATION  
184-00087  
(62-032435)(35-002769)



AARON M. MEFFORD  
NAME  
REGISTERED  
PROFESSIONAL  
ENGINEER  
OF  
ILLINOIS  
SIGNATURE  
1-23-09  
DATE  
11-30-09  
EXPIRES

TOWNSHIP ROUTE 376  
OVER SOUTHERN OUTLET  
HAMILTON COUNTY, ILLINOIS

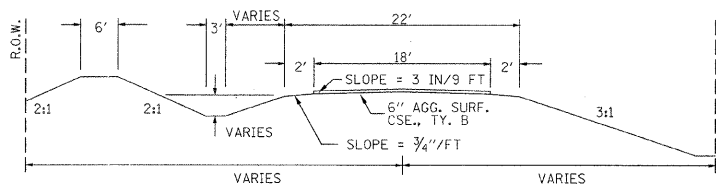
SHEET TITLE:  
PLAN & PROFILE

SCALE: VARIES  
BY: AMM  
DATE: 12/09  
REV:

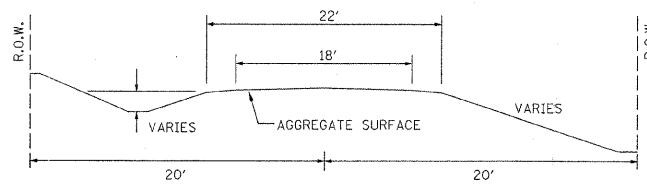
2 OF 12  
SHEETS

SHEET NO.  
2

**TYPICAL CROSS SECTION PROPOSED**



**TYPICAL CROSS SECTION EXISTING**



NOTE: CONSTRUCT SPECIAL DITCH

STA 3+30 TO STA 4+77.8 LT  
STA 3+30 TO STA 4+82.6 RT

**UTILITIES:**

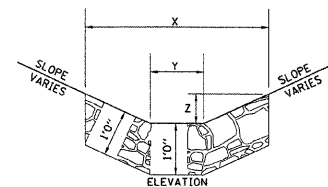
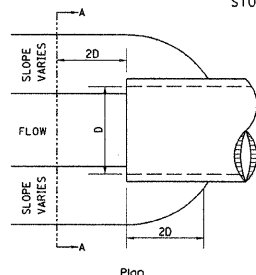
J.U.L.I.E. 1-800-892-0123

NOTE: CONSTRUCT STONE RIPRAP DITCH

STA 4+00 TO STA 4+77.8 LT (0.70 TON/LIN FT)  
STA 4+00 TO STA 4+82.6 RT (0.70 TON/LIN FT)  
112 TON STONE RIPRAP DITCH ALLOWED IN PROPOSAL.

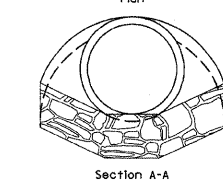
SEE STONE RIPRAP DITCH DETAIL.

**STONE RIPRAP DITCH DESIGN**

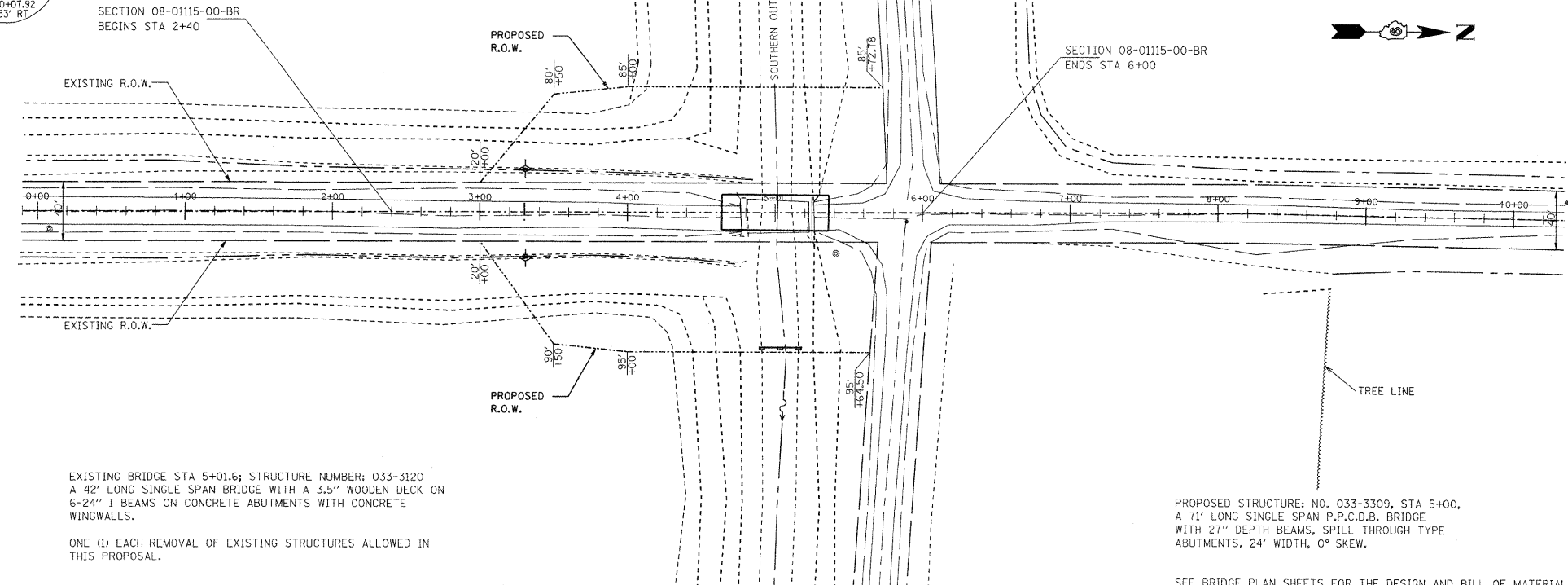


NOTE:

BOTTOM OF DITCH	SLOPE		
3 FT	1 1/2:1	2:1	3:1
X= 6 FT	7 FT	9 FT	
Y= 3 FT	3 FT	3 FT	
Z= 1 FT	1 FT	1 FT	
	0.48	0.56	0.70 TON/LIN. FT



NOTE: FOR PLACEMENT, QUALITY GRADATION AND OTHER MISCELLANEOUS REQUIREMENTS FOR STONE RIPRAP DITCH-SEE SPECIAL PROVISIONS.



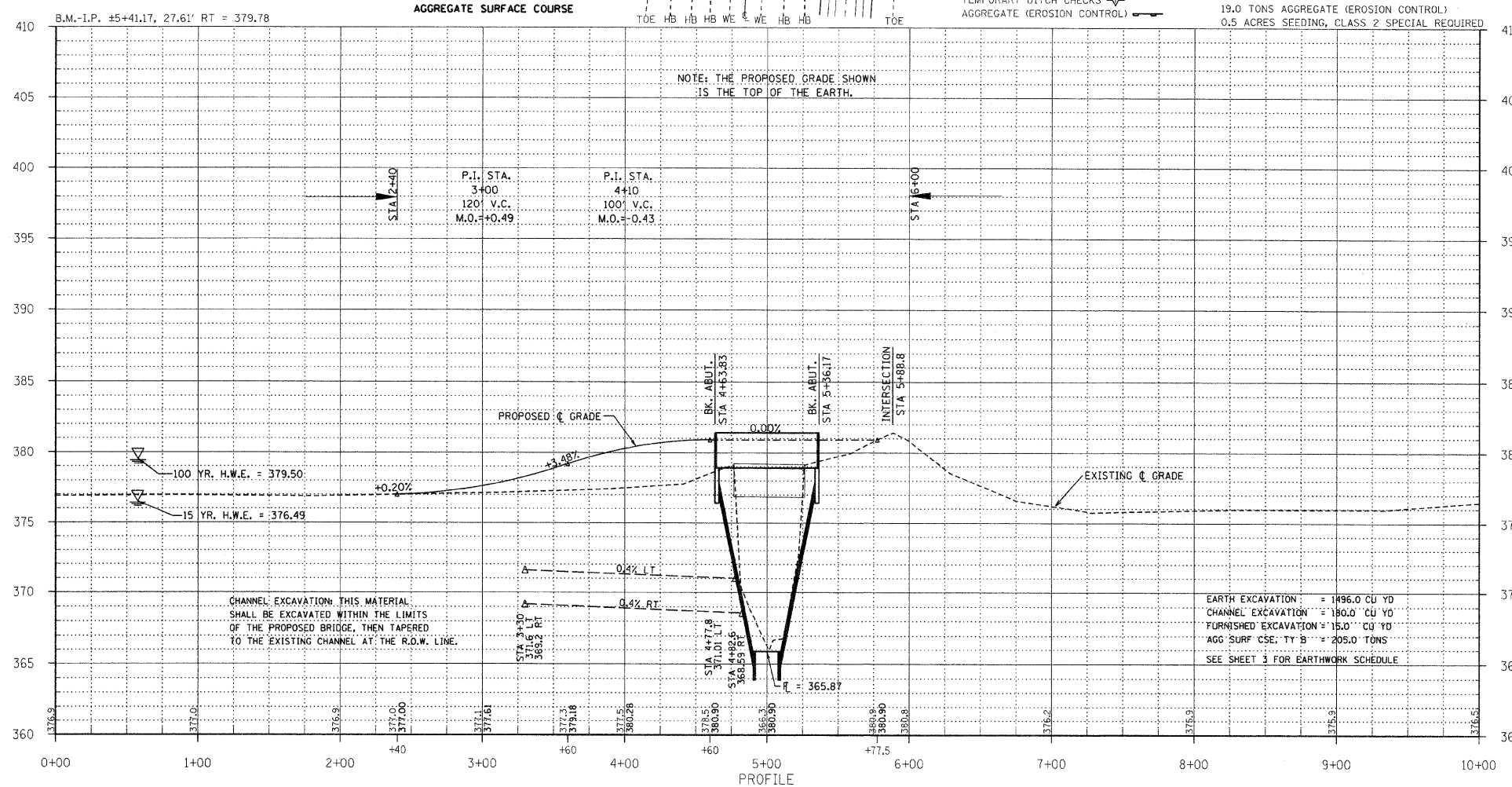
EXISTING BRIDGE STA 5+01.6; STRUCTURE NUMBER: 033-3120  
A 42' LONG SINGLE SPAN BRIDGE WITH A 3.5" WOODEN DECK ON  
6-24" I BEAMS ON CONCRETE ABUTMENTS WITH CONCRETE  
WINGWALLS.

ONE (1) EACH-REMOVAL OF EXISTING STRUCTURES ALLOWED IN THIS PROPOSAL.

PROPOSED STRUCTURE: NO. 033-3309, STA 5+00,  
A 71' LONG SINGLE SPAN P.P.C.D.B. BRIDGE  
WITH 27" DEPTH BEAMS, SPILL THROUGH TYPE  
ABUTMENTS, 24' WIDTH, 0° SKEW.

SEE BRIDGE PLAN SHEETS FOR THE DESIGN AND BILL OF MATERIALS.

NOTE: FILL NEXT TO BRIDGE TO BE  
AGGREGATE SURFACE COURSE



CHANNEL EXCAVATION THIS MATERIAL SHALL BE EXCAVATED WITHIN THE LIMITS OF THE PROPOSED BRIDGE, THEN TAPERED TO THE EXISTING CHANNEL AT THE R.O.W. LINE.

EARTH EXCAVATION = 1496.0 CU YD  
CHANNEL EXCAVATION = 180.0 CU YD  
FURNISHED EXCAVATION = 15.0 CU YD  
AGG SURF CSE, TY B = 205.0 TONS  
SEE SHEET 3 FOR EARTHWORK SCHEDULE