

HIGH VOLTAGE WIRING SCHEMATIC

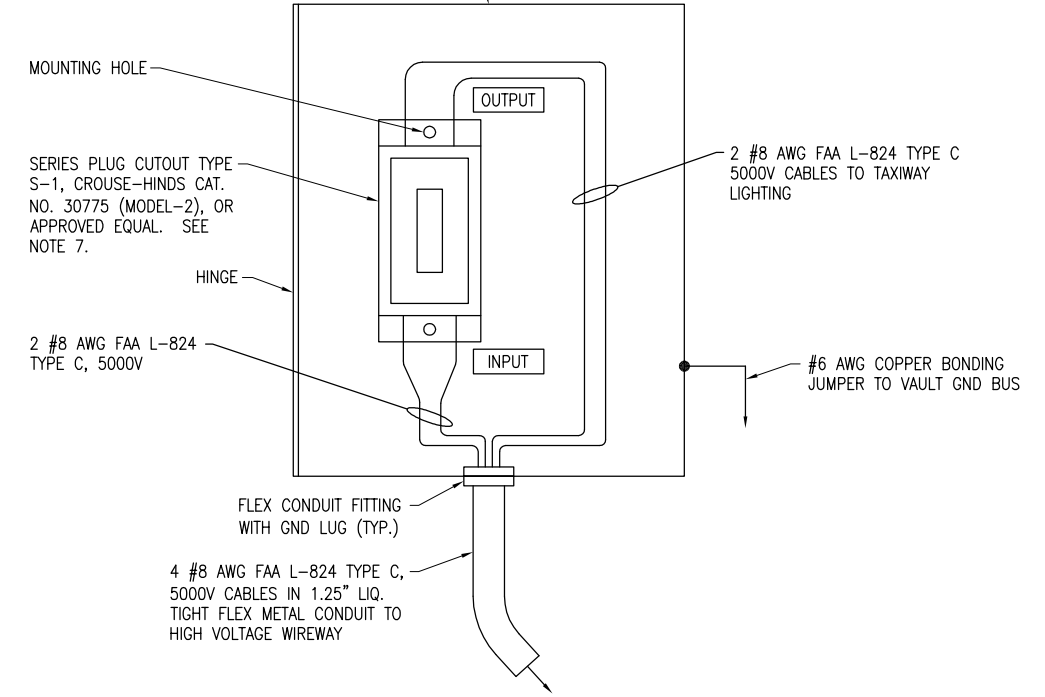
NOTES

1. PROVIDE PHENOLIC ENGRAVED LEGEND PLATES FOR EACH CONSTANT CURRENT REGULATOR (EXISTING & NEW) NOTING THE RUNWAY AND/OR TAXIWAY SERVED.
2. THE NEW PLUG CUTOUT CABINET SHALL BE FURNISHED WITH A PHENOLIC ENGRAVED LEGEND PLATE THAT IDENTIFIES THE RESPECTIVE TAXIWAY CIRCUIT OR REGULATOR. INCLUDE AN ADDITIONAL LEGEND PLATE LABELED "CAUTION OPERATE CUTOUTS WITH CCR SHUT OFF".
3. PROVIDE PHENOLIC ENGRAVED LEGEND PLATES FOR THE NEW CUTOUT TO IDENTIFY THE RESPECTIVE REGULATOR OUTPUT CONNECTION AND THE RESPECTIVE CIRCUIT LOAD CONNECTION.
4. BOND PLUG CUTOUT CABINET TO THE VAULT GROUND BUS WITH A #6 AWG COPPER BONDING JUMPER. BOND REGULATOR FRAME TO VAULT GROUND BUS WITH A DEDICATED #6 AWG BONDING JUMPER.
5. PROVIDE ADEQUATE WORKING SPACE IN FRONT OF EACH CUTOUT ENCLOSURE TO MEET NEC CLEARANCE REQUIREMENTS.
6. LIQUID TIGHT FLEXIBLE METAL CONDUIT AND ASSOCIATED FITTINGS SHALL BE U.L. LISTED TO MEET THE REQUIREMENTS OF NEC 350.6, SUITABLE FOR GROUNDING AND SUNLIGHT RESISTANT. LIQUID TIGHT FLEXIBLE METAL CONDUIT THAT IS USED FOR FLEXIBILITY (INCLUDING CONNECTIONS TO CCR'S & TRANSFORMERS) SHALL REQUIRE AN EXTERNAL BONDING JUMPER OR INTERNAL EQUIPMENT GROUNDING CONDUCTOR PER NEC 350.60. EXTERNAL BONDING JUMPERS USED WITH CCR INSTALLATIONS SHALL BE #6 AWG COPPER (MINIMUM). DO NOT INSTALL LIQUID TIGHT FLEXIBLE METAL CONDUIT THAT IS NOT UL LISTED. CONFIRM LIQUID TIGHT FLEXIBLE METAL CONDUIT BEARS THE UL LABEL PRIOR TO INSTALLING IT.
7. CROUSE-HINDS CAT. NO. 30771, (MODEL-3) SERIES PLUG CUTOUTS ARE NOT ACCEPTABLE, BECAUSE THE HANDLE IS NOT REMOVABLE. ADB SIEMENS SCO SERIES CUTOUTS ARE NOT ACCEPTABLE BECAUSE THEY DO NOT FUNCTION THE SAME AS THE CROUSE-HINDS 30775 CUTOUT. AIRPORT LIGHTING CO. PART NO. S1 CUTOUTS ARE NOT ACCEPTABLE BECAUSE THEY HAVE BEEN OBSERVED TO NOT FUNCTION THE SAME AS THE CROUSE-HINDS 30775 CUTOUT WHEN THE HANDLE IS REMOVED, AND THE MFR DOES NOT RECOMMEND OPERATION OF THE CUTOUT WITH THE HANDLE REMOVED. OTHER CUTOUTS THAT DO NOT FUNCTION THE SAME AS CROUSE-HINDS CAT. NO. 30775 (MODEL-2) ARE NOT ACCEPTABLE.
8. HIGH VOLTAGE & LOW VOLTAGE CIRCUITS SHALL NOT BE INSTALLED IN THE SAME WIREWAY.

LEGEND

- "I" DENOTES PLUG CUTOUT WITH PLUG INSERTED
- "P" DENOTES PLUG CUTOUT WITH PLUG PULLED
- "CCR" DENOTES CONSTANT CURRENT REGULATOR

14"H x 12"W x 8"D (APPROXIMATE DIMENSIONS) NEMA 1 OR NEMA 12 ENCLOSURE WITH HINGED COVER & BACK PANEL. NOTE FRONT DOOR OF ENCLOSURE NOT SHOWN FOR CLARITY. ADJUST ENCLOSURE DIMENSIONS AS NECESSARY TO ACCOMMODATE THE RESPECTIVE CUTOUT.



SERIES PLUG CUTOUT MOUNTING DETAIL

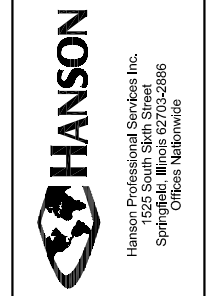
NOT TO SCALE (FOR TAXIWAY A CCR)

| | |
|----------|--|
| BY | |
| REVISION | |
| DATE | |

TRI-TOWNSHIP AIRPORT
SAVANNA, CARROLL COUNTY
ILLINOIS

IL PROJ.: SFY-3932 A.I.P. PROJ.: 3-17-09-091-B15

| | | |
|----------------------------------|---------------------|-----------------------|
| Hanson Project No. 09A0033D_0800 | FILENAME E-604.DWG | DATE 08/14/09 |
| SCALE NOT TO SCALE | LAYOUT KNL 07/31/09 | REVIEWED CAH 07/31/09 |
| | DRAWN MV 07/31/09 | |



REPLACE MITL SYS.,
INSTALL APRON LTS

HIGH VOLTAGE
WIRING SCHEMATIC