

STATE OF ILLINOIS  
DEPARTMENT OF TRANSPORTATION  
DIVISION OF HIGHWAYS

F.A.U. RTE.	SECTION	COUNTY	TOTAL SHEETS	SHEET NO.
VAR.	2015-056T	COOK	19	1
		ILLINOIS	CONTRACT NO. 62B20	

FOR INDEX OF SHEETS, SEE SHEET NO. 2

IMPROVEMENT LOCATED IN THE CITY OF CHICAGO AND THE VILLAGES OF MERRIONETTE PARK, ALSIP, BLUE ISLAND AND ROBBINS

**PROPOSED  
HIGHWAY PLANS**

1) FAU ROUTE 2831: KEDZIE AVE, 2) FAU ROUTE 1583: 115TH ST  
1) 115TH ST TO 135TH ST, 2) KEDZIE AVE TO ROCKWELL ST.

SECTION: 2015-056T  
DRAINAGE (STRUCTURE LINING)  
COOK COUNTY

**TRAFFIC DATA**

2014 ADT (KEDZIE AVE.): 15,100  
2014 ADT (115TH ST.): 10,600

**POSTED SPEED LIMIT**

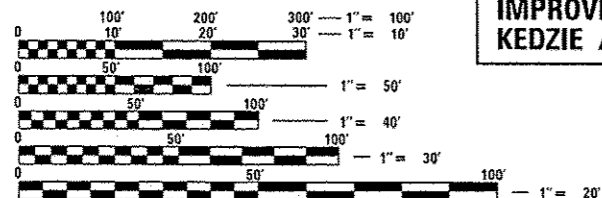
KEDZIE AVE: 40 MPH  
115TH ST: 30 MPH

LOC. 2  
IMPROVEMENT BEGINS  
115TH ST. AND KEDZIE AVE.

LOC. 1  
IMPROVEMENT BEGINS  
KEDZIE AVE AND 115TH ST.

LOC. 2  
IMPROVEMENT ENDS  
115TH ST. AND ROCKWELL

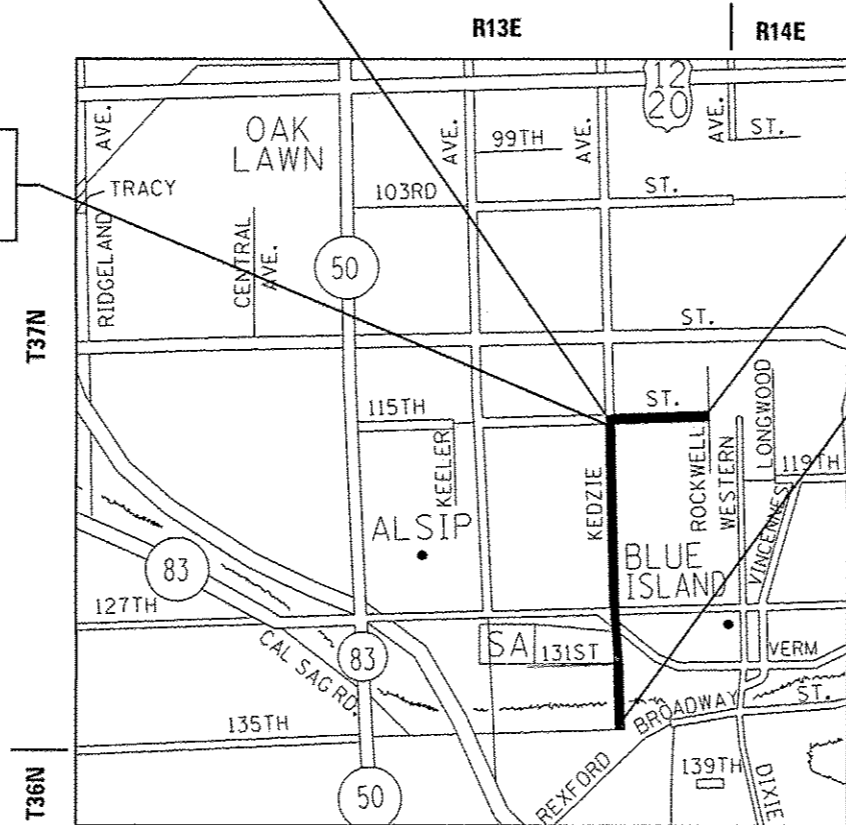
LOC. 1  
IMPROVEMENT ENDS  
KEDZIE AVE AND 135TH ST.



FULL SIZE PLANS HAVE BEEN PREPARED USING STANDARD ENGINEERING SCALES. REDUCED SIZED PLANS WILL NOT CONFORM TO STANDARD SCALES. IN MAKING MEASUREMENTS ON REDUCED PLANS, THE ABOVE SCALES MAY BE USED.

C.U.A.N  
CHICAGO UTILITY ALERT NETWORK  
1-312-744-7000

J.U.L.I.E.  
JOINT UTILITY LOCATION INFORMATION FOR EXCAVATION  
1-800-892-0123  
OR 811



WORTH TOWNSHIP

GROSS LENGTH = 17,268.00 FT. = 3.270 MILE  
NET LENGTH = 15,335.7 FT. = 2.904 MILE

PROJECT ENGINEER: J. ALAIN MIDY (847) 221-3056  
PROJECT MANAGER: ISSAM RAYYAN (847) 705-4178

CONTRACT NO. 62B20



LOCATION OF SECTION INDICATED THUS: - [black rectangle]

STATE OF ILLINOIS  
DEPARTMENT OF TRANSPORTATION  
DIVISION OF HIGHWAYS

SUBMITTED August 11, 2015

*John F. Fiedler*  
DEPUTY DIRECTOR OF HIGHWAYS, REGION ENGINEER

*John D. Barabadi, P.E.*  
ENGINEER OF DESIGN AND ENVIRONMENT

*Amr Osman, P.E.*  
DIRECTOR OF HIGHWAYS, CHIEF ENGINEER

PRINTED BY THE AUTHORITY  
OF THE STATE OF ILLINOIS

**INDEX OF SHEETS**

1. COVER SHEET
2. INDEX OF SHEETS, STATE STANDARDS AND GENERAL NOTES
3. SUMMARY OF QUANTITIES
- 4.-13. SCHEDULE OF QUANTITIES
14. DETAILS FOR FRAMES AND LIDS ADJUSTMENT
15. CURB OR CURB AND GUTTER REMOVAL AND REPLACEMENT (BD-24)
16. CITY OF CHICAGO CATCH BASIN, INLET AND MANHOLE DETAILS (BD-47)
17. TRAFFIC CONTROL AND PROTECTION FOR SIDE ROADS, INTERSECTIONS, AND DRIVEWAYS (TC-10)
18. TRAFFIC CONTROL AND PROTECTION AT TURN BAYS (TO REMAIN OPEN TO TRAFFIC (TC-14)
19. ARTERIAL ROAD INFORMATION SIGN (TC-22)

**STATE STANDARDS**

- 604001-04 FRAME AND LIDS, TYPE 1
- 604091-03 FRAME AND GRATE TYPE 24
- 701501-06 URBAN LANE CLOSURE, 2L, 2W, UNDIVIDED
- 701601-09 URBAN LANE CLOSURE, MULTILANE, 1W OR 2W WITH NONTRAVERSABLE MEDIAN
- 701606-10 URBAN SINGLE LANE CLOSURE, MULTI LANE, 2W WITH MOUNTABLE MEDIAN
- 701701-09 URBAN LANE CLOSURE, MULTILANE INTERSECTION
- 701801-05 SIDEWALK, CORNER OR CROSSWALK CLOSURE
- 701901-04 TRAFFIC CONTROL DEVICES

**GENERAL NOTES:**

1. BEFORE STARTING ANY EXCAVATION, THE CONTRACTOR SHALL CALL "J.U.L.I.E." AT (800) 892-0123 OR 811 FOR FIELD LOCATIONS OF BURIED ELECTRIC, TELEPHONE AND GAS UTILITIES. 48 HOUR NOTIFICATION IS REQUIRED.
2. BEFORE STARTING ANY EXCAVATION IN THE CITY OF CHICAGO, THE CONTRACTOR SHALL CALL "C.U.A.N." (CHICAGO UTILITY ALERT NETWORK) AT (312)744-7000 FOR FIELD LOCATIONS OF BURIED ELECTRIC, TELEPHONE AND GAS UTILITIES. (48 HOUR NOTIFICATION IS REQUIRED).
3. TEN (10) FOOT TRANSITIONS SHALL BE USED TO MATCH PROPOSED CURB AND GUTTER AND MEDIAN ITEMS OF WORK TO EXISTING CURBS AND GUTTER AND MEDIANS IN THE FIELD, UNLESS OTHERWISE SHOWN. THE TRANSITIONS SHALL BE PAID FOR AT THE CONTRACT UNIT PRICE FOR THE PROPOSED ITEMS OF WORK SPECIFIED.
4. THE CONTRACTOR SHALL COORDINATE CONSTRUCTION ACTIVITIES WITH UTILITY COMPANIES, AND THE CITY OF CHICAGO AND THE VILLAGES OF MERRIONETTE PARK, ALSIP, BLUE ISLAND AND ROBBINS.
5. THE CONTRACTOR WILL NOT BE ALLOWED TO SET UP A YARD OR FIELD OFFICE ON STATE PROPERTY WITHOUT WRITTEN PERMISSION FROM THE DEPARTMENT.
6. USE #8 EPOXY-COATED TIE BARS, CONFORMING TO ART. 1006.10 OF THE STANDARD SPECIFICATIONS, FOR ALL TIE BARS. USE THE "LONGITUDINAL CONSTRUCTION JOINT (TIE BAR GROUTED IN PLACE)" DETAIL SHOWN ON HIGHWAY STANDARD 420001 FOR ALL LONGITUDINAL JOINTS.
7. ALL DAMAGE TO EXISTING PAVEMENT MARKINGS OR RAISED REFLECTIVE PAVEMENT MARKERS OUTSIDE THE REMOVAL LINE SHOWN ON THE PLANS SHALL BE REPLACED AT NO ADDITIONAL COST TO THE DEPARTMENT.
8. IT SHALL BE THE CONTRACTOR'S RESPONSIBILITY TO VERIFY ALL DIMENSIONS AND CONDITIONS EXISTING IN THE FIELD PRIOR TO CONSTRUCTION AND ORDERING OF MATERIALS.
9. THE CONTRACTOR SHALL CONTACT THE DISTRICT ONE TRAFFIC CONTROL SUPERVISOR AT (847)705-4470 A MINIMUM OF 72 HOURS IN ADVANCE OF BEGINNING WORK.
10. THESE PLANS HAVE BEEN PREPARED FROM NOTES RECEIVED FROM THE BUREAU OF MAINTENANCE.
11. THE CONTRACTOR SHALL BE REQUIRED TO PROVIDE ACCESS TO ADJUTING PROPERTY AT ALL TIMES DURING THE CONSTRUCTION OF THIS PROJECT.
12. DO NOT SCALE PLANS FOR CONSTRUCTION DIMENSIONS.
13. PERMITS FROM THE DEPARTMENT OF SEWERS ARE REQUIRED FOR ALL UNDERGROUND STORM, SANITARY OR COMBINED SEWER SYSTEM CONSTRUCTION, AND FOR WORK INVOLVING ADJUSTMENT OF SEWER STRUCTURES. THE DEPARTMENT OF SEWERS' PERMIT MUST BE OBTAINED BY A LICENSED SEWER DRAIN LAYER PRIOR TO START OF CONSTRUCTION.
14. THE LICENSED SEWER CONTRACTOR/SUB-CONTRACTOR MUST SUBMIT TWO (2) SETS OF PLANS APPROVED BY THE DEPARTMENT OF SEWERS FOR THE ISSUE OF THE SEWER PERMIT IN SUITE 410 - 333 SOUTH STATE STREET, CHICAGO, IL 60604. INSPECTION WILL BE PROVIDED BY THE DEPARTMENT OF SEWERS.
15. ALL BROKEN, CRACKED, WORN OR OTHERWISE DAMAGED OR BICYCLE UNSAFE FRAMES AND LIDS ON SEWER STRUCTURES, SHALL BE REPLACED WITH NEW DEPARTMENT OF SEWERS' STANDARD FRAMES AND LIDS.
16. OPEN LID DRAINAGE STRUCTURES SHALL NOT BE CLOSED, COVERED OR OTHERWISE OBSTRUCTED DURING CONSTRUCTION OF THIS ROADWAY WITHOUT THE WRITTEN PERMISSION FROM THE CITY OF CHICAGO.
17. CITY OF CHICAGO CASTINGS ARE THE PROPERTY OF THE CITY OF CHICAGO AND THE CONTRACTOR SHALL NOTIFY THE CITY FOR REMOVAL AND DISPOSITION OF THE CASTINGS.
18. ALL STRUCTURES SHALL BE BASED ON 4 FT DIAMETER.
19. THE ENGINEER SHALL CONTACT THE ALSIP MAINTENANCE YARD AT 708-448-0050 FOR VERIFICATION OF ANY STRUCTURE LOCATION IF REQUIRED.

**HMA MIXTURE REQUIREMENTS**

MIXTURE TYPE	AIR VOIDS @ NDES	QUALITY MANAGEMENT PROGRAM (QMP)
HOT-MIX ASPHALT SURFACE COURSE, MIX "D", N70 (IL 9.5 mm) (2")	4% @ 70 GYR	<b>QC /QA</b>
QMP DESIGNATION: QUALITY CONTROL/QUALITY ASSURANCE (QC/QA):		

THE UNIT WEIGHT USED TO CALCULATE ALL HOT-MIX ASPHALT SURFACE MIXTURE QUANTITIES IS 112 LBS/SOYD/IN.

THE "AC TYPE" FOR POLYMERIZED HMA MIXES SHALL BE "SBS/SBR PG 76 -22" AND FOR NON-POLYMERIZED HMA THE "AC TYPE" SHALL BE "PG 64 -22" UNLESS MODIFIED BY DISTRICT ONE SPECIAL PROVISIONS. FOR USE OF RECYCLED MATERIALS SEE SPECIAL PROVISIONS.

QUALITY MANAGEMENT PROGRAM (QMP) IDENTIFIES THE PARTICULAR QUANTITY CONTROL SPECIFICATION THAT APPLIES TO THE HMA MIXTURE.

FILE NAME :	USER NAME : dsharr	DESIGNED -	REVISED -	<b>STATE OF ILLINOIS DEPARTMENT OF TRANSPORTATION</b>	<b>KEDZIE AVE AND 115TH ST</b>		F.A. RTE.	SECTION	COUNTY	TOTAL SHEETS	SHEET NO.	
pm\11604610\INTEG.sit\inote.gov\FW1001\Do	Documents\1001 Offices\District 1\Projects\01319	01319\01319\Design\0131915-shr-gennote.dg	REVISED -		<b>INDEX OF SHEETS, STATE STANDARDS AND GENERAL NOTES</b>		VAR.	2015-056T	COOK	19	2	
Default	PLOT SCALE = 100.0000 1/2 in.	CHECKED -	REVISED -		SCALE:	SHEET 1	OF 1	SHEETS	STA.	TO STA.	<b>CONTRACT NO. 62B20</b>	
	PLOT DATE = 8/24/2015	DATE -	REVISED -		ILLINOIS FED. AID PROJECT							





NO.	DESCRIPTION	SCHEDULE													COMMENTS
		STRUC. TYPE	CB TO BE ADJUSTED (EACH)	CB TO BE ADJUSTED W NEW TYPE 1 FRAME, OPEN LID (EACH)	CB TO BE ADJUSTED W NEW TYPE 24 FRAME AND GRATE (EACH)	CB TO BE RECONSTRUCTED (EACH)	CB TO BE RECONSTRUCTED W. NEW TYPE 24 FRAME & GRATE (EACH)	MH TO BE ADJUSTED (EACH)	MH TO BE ADJUSTED W NEW TYPE 1 FRAME, CLOSED LID (EACH)	MH TO BE RECONSTRUCTED (EACH)	COMB. CONC. C&G REMOVAL & REPLACEMENT (LF)	DRAINAGE STRUCTURE TO BE CLEANED (EACH)	DRNG. STRUC. LINING (LF)		
21	12720 S. KEDZIE	CB	-	-	-	-	-	-	-	-	-	1	-	WITHIN GRASS AREA.	
22	12720 S. KEDZIE	CB	1	-	-	-	-	-	-	-	10	1	-	SOME BRICKS TO BE FIXED. STRUCTURE TO BE ADJUSTED.	
23	12710 S. KEDZIE	CB	-	-	-	-	-	-	-	-	-	1	-	WITHIN GRASS AREA.	
24	12710 S. KEDZIE	CB	1	-	-	-	-	-	-	-	10	1	-	FIX BRICKS UNDER FRAME. ADJUST STRUCTURE	
25	12680 S. KEDZIE	CB	1	-	-	-	-	-	-	-	10	1	-	SOME LOOSE BRICKS. STURCTURE TO BE ADJUSTED.	
26	12670 S. KEDZIE	MH	-	-	-	-	-	-	-	-	-	-	11.4	WITHIN GRASS AREA.	
27	12660 S. KEDZIE	CB	-	-	-	-	-	-	-	-	10	-	7	SOME LOOSE BRICKS UNDER FRAME. STRUCTURE TO BE ADJUSTED.	
28	12650 S. KEDZIE	CB	1	-	-	-	-	-	-	-	10	1	-	5' N. OF FIRE HYDRANT. MINOR DAMAGE (BRICKS) STRUCTURE TO BE ADJUSTED.	
29	12636 S. KEDZIE	MH	-	-	-	-	-	-	-	-	-	-	8.1	WITHIN GRASS AREA.	
30	12630 S. KEDZIE	CB	-	-	-	-	-	-	-	-	-	-	7.4		
31	12600 S. KEDZIE	CB	-	-	-	-	-	-	-	-	10	-	6.9	DAMAGED BRICKS UNDER FRAME. STRUCTURE TO BE ADJUSTED.	
32	12580 S. KEDZIE	CB	-	-	-	-	-	-	-	-	10	-	6.7	LOOSE BRICKS UNDER FRAME. STRUCTURE TO BE ADJUSTED.	
33	12578 S. KEDZIE	MH	-	-	-	-	-	-	-	-	-	-	7.1	WITHIN GRASS AREA. LOOSE BRICKS UNDER FRAME. STRUCTURE TO BE ADJUSTED.	
34	12550 S. KEDZIE	MH	-	-	-	-	-	-	-	-	-	1	-	WITHIN GRASS AREA.	
35	12540 S. KEDZIE	CB	-	-	-	-	-	-	-	-	-	-	7.1		
36	12510 S. KEDZIE	CB	-	-	-	-	-	-	-	-	-	1	-	5' N. OF FIRE HYDRANT.	
37	12500 S. KEDZIE	CB	-	-	-	-	-	-	-	-	10	-	8.1	15' N. OF FIRE HYDRANT. MAJOR DAMAGE TO CONCRETE UNDER FRAM. STRUCTURE TO BE ADJUSTED.	
38	12410 S. KEDZIE	CB	-	-	-	-	1	-	-	-	10	-	7.4	CB IS SINKING. 75' N. OF FIRE HYDRANT. LOOSE ADJUSTING CONCRETE RINGS UNDER FRAME. STRUCTURE TO BE RECONSTRUCTED.	
39	12410 S. KEDZIE	MH	-	-	-	-	-	-	-	-	-	-	4.1	WITHIN GRASS AREA. 65' N. OF FIRE HYDRANT.	
40	12340 S. KEDZIE	MH	-	-	-	-	-	-	-	-	-	-	7.1	100' S. OF SPEED LIMIT SIGN. WITHIN ASPHALT AREA.	
SUB-TOTAL			4	-	-	1	-	-	-	-	90	8	88.4		

NO.	DESCRIPTION	SCHEDULE													COMMENTS
		STRUC. TYPE	CB TO BE ADJUSTED (EACH)	CB TO BE ADJUSTED W NEW TYPE 1 FRAME, OPEN LID (EACH)	CB TO BE ADJUSTED W NEW TYPE 24 FRAME AND GRATE (EACH)	CB TO BE RECONSTRUCTED (EACH)	CB TO BE RECONSTRUCTED W. NEW TYPE 24 FRAME & GRATE (EACH)	MH TO BE ADJUSTED (EACH)	MH TO BE ADJUSTED W NEW TYPE 1 FRAME, CLOSED LID (EACH)	MH TO BE RECONSTRUCTED (EACH)	COMB. CONC. C&G REMOVAL & REPLACEMENT (LF)	DRAINAGE STRUCTURE TO BE CLEANED (EACH)	DRNG. STRUC. LINING (LF)		
41	12320 S. KEDZIE	CB	-	-	-	-	-	-	-	-	-	-	5.4		
42	12308 S. KEDZIE	MH	-	-	-	-	-	-	-	-	10	-	7.3	MINOR DAMAGE. STURCTURE TO BE ADJUSTED.	
43	12300 S. KEDZIE	CB	-	-	-	-	-	-	-	-	-	-	7.6		
44	12296 S. KEDZIE	CB	-	-	-	-	-	-	-	-	-	-	4.3		
45	12294 S. KEDZIE	MH	-	-	-	-	-	-	-	-	-	-	6.6	7' S. OF TRAFFIC SIGNAL HANDHOLE. CB IN THE ROAD	
46	12292 S. KEDZIE	CB	-	-	-	-	-	-	-	-	-	-	4.5	100' S. of CEMETERY ENTRANCE SIGN	
47	12290 S. KEDZIE	CB	-	-	-	-	-	-	-	-	-	-	6	WITHIN ASPHALT. 30' S. OF CEMETERY ENTRANCE SIGN.	
48	12288 S. KEDZIE	CB	-	-	-	-	-	-	-	-	-	1	-	25' S. OF CEMETERY ENTRANCE SIGN.	
49	12282 S. KEDZIE	MH	-	-	-	-	-	-	-	-	-	-	6.2	30' N. OF CEMETERY ENTRANCE SIGN	
50	12280 S. KEDZIE	CB	-	-	-	-	-	-	-	-	-	-	4.5	75' N. OF CEMETERY ENTRANCE SIGN.	
51	12278 S. KEDZIE	CB	-	-	-	-	-	-	-	-	-	-	7.8		
52	12270 S. KEDZIE	CB	-	-	-	-	-	-	-	-	-	-	6.1	75' S. OF AMERITECH VAULT	
53	12260 S. KEDZIE	CB	-	-	-	-	-	-	-	-	10	-	4.5	DAMAGE UNDER FRAME. STRUCTURE TO BE ADJUSTED.	
54	12250 S. KEDZIE	MH	-	-	-	-	-	-	-	-	-	-	6.3	WITHIN GRASS AREA. 95' S. OF AMERITECH VAULT.	
55	12248 S. KEDZIE	MH	-	-	-	-	-	-	-	-	-	-	6.3	WITHIN GRASS AREA.	
56	12240 S. KEDZIE	CB	-	-	-	-	-	-	-	-	-	-	6.4	30' S OF AMERITECH PHONE UTILIY (VAULT)	
57	12208 S. KEDZIE	MH	-	-	-	-	-	-	-	-	-	-	5.5	WITHIN GRASS AREA	
58	12200 S. KEDZIE	CB	-	-	-	-	-	-	-	-	-	-	6.9	AT CEMETERY MAINTENANCE ENTRANCE.	
59	12198 S. KEDZIE	CB	-	-	-	-	-	-	-	-	-	1	-	WITHIN GRASS AREA. CLEAN ONLY.	
60	12190 S. KEDZIE	CB	-	-	-	-	-	-	-	-	-	-	4.6	STRUCTURE LOCATED WITHIN ROADYWAY. STRUCTURE CONE MATERIAL IS CONCRETE.	
SUB-TOTAL			-	-	-	-	-	-	-	-	20	2	106.8		

NO.	DESCRIPTION	SCHEDULE													COMMENTS
		STRUC. TYPE	CB TO BE ADJUSTED (EACH)	CB TO BE ADJUSTED W NEW TYPE 1 FRAME, OPEN LID (EACH)	CB TO BE ADJUSTED W NEW TYPE 24 FRAME AND GRATE (EACH)	CB TO BE RECONSTRUCTED (EACH)	CB TO BE RECONSTRUCTED W. NEW TYPE 24 FRAME & GRATE (EACH)	MH TO BE ADJUSTED (EACH)	MH TO BE ADJUSTED W NEW TYPE 1 FRAME, CLOSED LID (EACH)	MH TO BE RECONSTRUCTED (EACH)	COMB. CONC. C&G REMOVAL & REPLACEMENT (LF)	DRAINAGE STRUCTURE TO BE CLEANED (EACH)	DRNG. STRUC. LINING (LF)		
61	12188 S. KEDZIE	MH	-	-	-	-	-	-	-	-	-	1	-	WITHIN GRASS AREA.	
62	12180 S. KEDZIE	CB	-	-	-	-	-	-	-	-	-	-	8.5		
63	12160 S. KEDZIE	CB	-	-	-	-	-	-	-	-	-	-	7.5	20' S. OF POWER POLE (#510-15) & 250' N. OF CEMETERY ENTRANCE.	
64	12146 S. KEDZIE	CB	-	-	-	-	-	-	-	-	-	-	7.9		
65	12144 S. KEDZIE	CB	-	-	-	-	-	-	-	-	-	-	7.1	WITHIN GRASS AREA.	
66	12100 S. KEDZIE	CB	-	-	-	-	-	-	-	-	10	-	8.1	150' S. OF CEMETERY ENTRANCE. STRUCTURE TO BE ADJUSTED.	
67	12060 S. KEDZIE	MH	-	-	-	-	-	-	-	-	-	-	7.1	WITHIN ASPHALT AREA.	
68	12034 S. KEDZIE	CB	-	-	-	-	-	-	-	-	-	-	7.1	WITHIN ASPHALT AREA.	
69	12000 S. KEDZIE	MH	-	-	-	-	-	-	-	-	-	-	6.5	WITHIN ASPHALT AREA.	
70	11962 S. KEDZIE	MH	-	-	-	-	-	-	-	-	-	-	4.3	WITHIN GRASS AREA. 90' S OF CEMETERY ENTRANCE.	
71	11960 S. KEDZIE	CB	-	-	-	-	-	-	-	-	10	-	7.8	100' S OF CEMETERY ENTRANCE. MINOR DAMAGE. STRUCTURE TO BE ADJUSTED.	
72	11942 S. KEDZIE	MH	-	-	-	-	-	-	-	-	-	-	3.5	WITHIN GRASS AREA.	
73	11940 S. KEDZIE	CB	-	-	-	-	-	-	-	-	-	-	7.9		
74	11920 S. KEDZIE	CB	-	-	-	-	-	-	-	-	-	-	6	OAK HILL CEMETERY ENTRANCE.	
75	11900 S. KEDZIE	MH	-	-	-	-	-	-	-	-	-	-	4.8	WITHIN GRASS AREA.	
76	11880 S. KEDZIE	CB	-	-	-	-	-	-	-	-	10	-	5.9	MINOR CONCRETE RINGS DAMAGE. STRUCTURE TO BE ADJUSTED.	
77	11820 S. KEDZIE	CB	-	-	-	-	-	-	-	-	-	-	7.6	2 OTHER MH SAME LOCATION (11818 AND 11822).	
78	11756 S. KEDZIE	CB	-	-	-	-	-	-	-	-	10	-	7.7	ONE CONCRETE RING MISSING. STRUCTURE TO BE ADJUSTED.	
79	11754 S. KEDZIE	MH	-	-	-	-	-	-	-	-	-	-	3.4	WITHIN GRASS AREA.	
80	11740 S. KEDZIE	CB	-	-	-	-	-	-	-	-	-	-	7.4		
SUB-TOTAL			-	-	-	-	-	-	-	-	40	1	126.1		

NO.	DESCRIPTION	SCHEDULE													COMMENTS
		STRUC. TYPE	CB TO BE ADJUSTED (EACH)	CB TO BE ADJUSTED W NEW TYPE 1 FRAME, OPEN LID (EACH)	CB TO BE ADJUSTED W NEW TYPE 24 FRAME AND GRATE (EACH)	CB TO BE RECONSTRUCTED (EACH)	CB TO BE RECONSTRUCTED W. NEW TYPE 24 FRAME & GRATE (EACH)	MH TO BE ADJUSTED (EACH)	MH TO BE ADJUSTED W NEW TYPE 1 FRAME, CLOSED LID (EACH)	MH TO BE RECONSTRUCTED (EACH)	COMB. CONC. C&G REMOVAL & REPLACEMENT (LF)	DRAINAGE STRUCTURE TO BE CLEANED (EACH)	DRNG. STRUC. LINING (LF)		
81	11724 S. KEDZIE	MH	-	-	-	-	-	-	-	-	-	-	4.2	WITHIN GRASS AREA.	
82	11720 S. KEDZIE	CB	-	-	-	-	-	-	-	-	10	-	7.6	VERY MINOR DAMAGE UNDER FRAME. STRUCTURE TO BE ADJUSTED.	
83	11710 S. KEDZIE	MH	-	-	-	-	-	-	-	-	-	-	3.2	WITHIN DRIVEWAY	
84	11652 S. KEDZIE	CB	-	-	-	-	-	-	-	-	-	-	8		
85	11644 S. KEDZIE	CB	-	-	-	-	-	-	-	-	-	-	3.3	WITHIN DRIVEWAY	
86	11622 S. KEDZIE	CB	-	-	-	-	-	-	-	-	-	-	8.2		
87	11620 S. KEDZIE	MH	-	-	-	-	-	-	-	-	-	-	3.5	WITHIN GRASS AREA	
88	11552 S. KEDZIE	CB	-	-	-	-	-	-	-	-	10	-	7.6	MINOR DAMAGE UNDER FRAME. BRICK WORK UNDER FRAME NEEDED. STRUCTURE TO BE ADJUSTED.	
89	11520 S. KEDZIE	CB	-	-	-	-	-	-	-	-	10	-	7.3	MISSING BRICKS UNDER FRAME. STRUCTURE TO BE ADJUSTED.	
90	13457 S. KEDZIE	CB	-	-	-	-	-	-	-	-	-	1	-		
91	13455 S. KEDZIE	MH	-	-	-	-	-	-	1	-	-	1	-	DAMAGED SW AREA. WITHIN GRASS AREA. ADJUST WITH NEW FRAME.	
92	13437 S. KEDZIE	MH	-	-	-	-	-	1	-	-	-	1	-	IN STREET. NEEDS REPAIR UNDER FRAME. STRUCTURE TO BE ADJUSTED.	
93	13357 S. KEDZIE	MH	-	-	-	-	-	1	-	-	10	1	-	UNDER FRAME NEEDS TO BE FIXED. STRUCTURE TO BE ADJUSTED.	
94	13331 S. KEDZIE	CB	-	-	-	-	-	1	-	-	10	1	-	STRUCTURE IN BRIDGE APPROACH. 12" OFFSET BETWEEN FRAME AND CONE. DAMAGED UNDER FRAME TO BE FIXED. REPLACE CRACKED FRAME.	
95	13201 S. KEDZIE	CB	1	-	-	-	-	-	-	-	10	1	-	NEEDS ADJUSTMENT AND REPAIR. STRUCTURE TO BE ADJUSTED.	
96	13159 S. KEDZIE	CB	-	-	1	-	-	-	-	-	10	1	-	ADJACENT TO CURB. ADJUST WITH NEW FRAME AND LID.	
97	13159 S. KEDZIE	MH	-	-	-	-	-	-	1	-	-	1	-	IN MEDIAN.	
98	13119 S. KEDZIE	CB	-	-	-	-	-	-	-	-	-	-	6.6		
99	13111 S. KEDZIE	CB	-	-	-	-	-	-	-	-	10	-	7	RINGS UNDER FRAME NEED TO BE FIXED. STRUCTURE TO BE ADJUSTED.	
100	13101 S. KEDZIE	CB	-	-	-	-	-	-	-	-	-	-	6		
SUB-TOTAL			1	-	1	-	1	2	2	-	80	8	72.5		



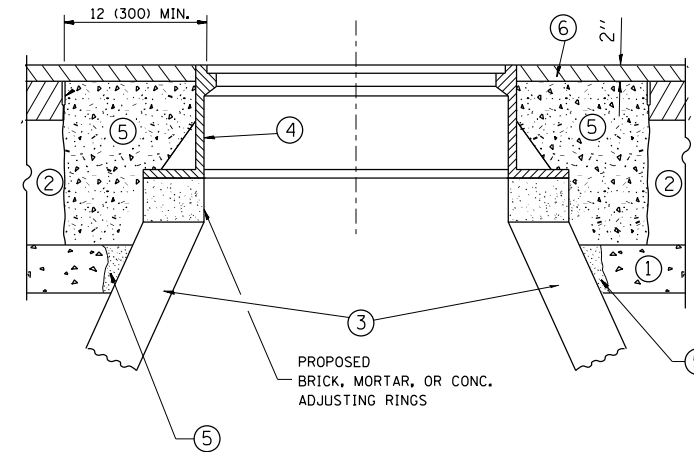
NO.	DESCRIPTION	SCHEDULE													COMMENTS
		STRUC. TYPE	CB TO BE ADJUSTED (EACH)	CB TO BE ADJUSTED W NEW TYPE 1 FRAME, OPEN LID (EACH)	CB TO BE ADJUSTED W NEW TYPE 24 FRAME AND GRATE (EACH)	CB TO BE RECONSTRUCTED (EACH)	CB TO BE RECONSTRUCTED W. NEW TYPE 24 FRAME & GRATE (EACH)	MH TO BE ADJUSTED (EACH)	MH TO BE ADJUSTED W NEW TYPE 1 FRAME, CLOSED LID (EACH)	MH TO BE RECONSTRUCTED (EACH)	COMB. CONC. C&G REMOVAL & REPLACEMENT (LF)	DRAINAGE STRUCTURE TO BE CLEANED (EACH)	DRNG. STRUC. LINING (LF)		
101	13101 S. KEDZIE	MH	-	-	-	-	-	-	-	-	-	-	7.3		WITHIN GRASS AREA.
102	13097 S. KEDZIE	CB	-	-	-	-	-	-	-	-	-	-	6.8		
103	13097 S. KEDZIE	CB	-	-	-	-	-	-	-	-	-	1	-		WITHIN GRASS AREA.
104	13097 S. KEDZIE	CB	1	-	-	-	-	-	-	-	-	1	-		WITHIN GRASS AREA. (CLOSED LID). NEED TO REPLACE AND FIX BRICKS UNDER FRAME. STRUCTURE TO BE ADJUSTED.
105	13089 S. KEDZIE	CB	-	-	-	-	-	-	-	-	10	-	6.8		NEEDS CONCRETE RINGS UNDER FRAME. STRUCTURE TO BE ADJUSTED.
106	13059 S. KEDZIE	CB	-	-	-	-	-	-	-	-	10	-	5.8		* LAST STRUCTURE S. OF BRIDGE.
107	12767 S. KEDZIE	CB	-	-	-	-	1	-	-	-	10	1	-		BADLY DAMAGED LID, AND FRAME IS FALLING APART. STRUCTURE IS SHIFTING. ADJUST WITH NEW FRAME AND LID.
108	12759 S. KEDZIE	CB	-	-	-	-	-	-	-	-	-	1	-		PIPE NEEDS TO BE CLEANED.
109	12751 S. KEDZIE	CB	1	-	-	-	-	-	-	-	10	1	-		DAMAGE UNDER FRAME. STRUCTURE TO BE ADJUSTED.
110	12751 S. KEDZIE	MH	-	-	-	-	-	-	1	-	-	1	-		WITHIN GRASS AREA
111	12725 S. KEDZIE	CB	-	-	-	-	-	-	-	-	-	-	10		
112	12705 S. KEDZIE	CB	-	-	-	-	-	-	-	-	10	-	4.6		NEEDS SOME ADJUSTMENT UNDER FRAME. STRUCTURE TO BE ADJUSTED.
113	12695 S. KEDZIE	CB	1	-	-	-	-	-	-	-	-	1	-		STRUCTURE TO BE ADJUSTED.
114	12691 S. KEDZIE	CB	1	-	-	-	-	-	-	-	10	1	-		STRUCTURE TO BE ADJUSTED.
115	12681 S. KEDZIE	CB	-	-	-	-	-	-	-	-	10	-	6.7		FILL GAP BETWEEN CONCRETE AND PIPE. STRUCTURE TO BE ADJUSTED.
116	12675 S. KEDZIE	CB	-	-	-	1	-	-	-	-	10	-	7.3		NEEDS 1-3 FT ADJUSTMENT UNDER FRAME. STRUCTURE TO BE RECONSTRUCTED.
117	12651 S. KEDZIE	CB	-	-	-	-	-	-	-	-	-	-	6.9		UNDER WATER.
118	12625 S. KEDZIE	CB	-	-	-	-	-	-	-	-	10	-	6.8		NEEDS 1-2 FT MAINTENANCE UNDER FRAME. STRUCTURE TO BE ADJUSTED.
119	12601 S. KEDZIE	CB	-	-	-	-	-	-	-	-	10	-	7.1		RINGS NEED TO BE LINED UP UNDER FRAME. STRUCTURE TO BE ADJUSTED.
120	12579 S. KEDZIE	CB	-	-	-	-	-	-	-	-	-	-	8.1		
SUB-TOTAL			4	-	-	1	1	-	1	-	100	8	84.2		* SEE NOTE 1 ON SHEET 13 OF 20

NO.	DESCRIPTION	SCHEDULE													COMMENTS
		STRUC. TYPE	CB TO BE ADJUSTED (EACH)	CB TO BE ADJUSTED W NEW TYPE 1 FRAME, OPEN LID (EACH)	CB TO BE ADJUSTED W NEW TYPE 24 FRAME AND GRATE (EACH)	CB TO BE RECONSTRUCTED (EACH)	CB TO BE RECONSTRUCTED W. NEW TYPE 24 FRAME & GRATE (EACH)	MH TO BE ADJUSTED (EACH)	MH TO BE ADJUSTED W NEW TYPE 1 FRAME, CLOSED LID (EACH)	MH TO BE RECONSTRUCTED (EACH)	COMB. CONC. C&G REMOVAL & REPLACEMENT (LF)	DRAINAGE STRUCTURE TO BE CLEANED (EACH)	DRNG. STRUC. LINING (LF)		
121	12523 S. KEDZIE	CB	-	-	-	-	-	-	-	-	10	-	6.9	STRUCTURE TO BE ADJUSTED.	
122	12451 S. KEDZIE	CB	-	-	-	-	-	-	-	-	-	-	8.6		
123	12411 S. KEDZIE	CB	-	-	-	-	-	-	-	-	-	1	-		
124	12347 S. KEDZIE	CB	-	-	-	-	-	-	-	-	-	1	-		
125	12319 S. KEDZIE	CB	-	-	-	-	-	-	-	-	10	-	7.4	CB UNDER WATER. ADJUSTING RINGS ARE SHIFTING 1.5' TOWARD CURB. STRUCTURE TO BE ADJUSTED.	
126	12291 S. KEDZIE	CB	-	-	-	-	-	-	-	-	-	1	-		
127	12283 S. KEDZIE	CB	-	-	-	-	-	-	-	-	10	-	5.9	UNDER WATER. RINGS ARE SHIFTED TOWARDS CURB (ABOUT 8"). STRUCTURE TO BE ADJUSTED.	
128	12275 S. KEDZIE	CB	-	-	-	-	-	-	-	-	-	1	-		
129	12271 S. KEDZIE	CB	-	-	-	-	-	-	-	-	-	1	-		
130	12267 S. KEDZIE	CB	-	-	-	-	-	-	-	-	-	1	-		
131	12251 S. KEDZIE	CB	-	-	-	-	-	-	-	-	-	1	-		
132	12249 S. KEDZIE	CB	-	-	-	-	-	-	-	-	-	1	-	HEAVY DEBRIS.	
133	12245 S. KEDZIE	CB	-	-	-	-	-	-	-	-	-	-	7.7		
134	12243 S. KEDZIE	CB	-	-	-	1	-	-	-	-	10	-	8	BAD DAMAGE. STRUCTURE TO BE RECONSTRUCTED.	
135	12221 S. KEDZIE	CB	-	-	-	-	-	-	-	-	-	1	-		
136	12201 S. KEDZIE	CB	-	-	-	-	-	-	-	-	-	-	7.6		
137	12195 S. KEDZIE	CB	-	-	-	1	-	-	-	-	10	-	8.3	2-3 FT. ADJUSTMENT NEEDED UNDER FRAME. STRUCTURE TO BE RECONSTRUCTED.	
138	12151 S. KEDZIE	CB	-	-	-	-	-	-	-	-	-	-	7.9	NEEDS MORTAR BETWEEN ADJ. RINGS.	
139	12001 S. KEDZIE	CB	-	-	-	-	-	-	-	-	10	-	5.1	UNDER WATER; NEED MORTAR ON CONCRETE ADJ. RINGS. STRUCTURE TO BE ADJUSTED.	
140	11909 S. KEDZIE	CB	-	1	-	-	-	-	-	-	10	1	-	REPLACE EXISTING LID	
SUB-TOTAL			-	1	-	2	-	-	-	-	70	10	73.4		

NO.	DESCRIPTION	SCHEDULE											COMMENTS	
		STRUC. TYPE	CB TO BE ADJUSTED (EACH)	CB TO BE ADJUSTED W NEW TYPE 1 FRAME, OPEN LID (EACH)	CB TO BE ADJUSTED W NEW TYPE 24 FRAME AND GRATE (EACH)	CB TO BE RECONSTRUCTED (EACH)	CB TO BE RECONSTRUCTED W. NEW TYPE 24 FRAME & GRATE (EACH)	MH TO BE ADJUSTED (EACH)	MH TO BE ADJUSTED W NEW TYPE 1 FRAME, CLOSED LID (EACH)	MH TO BE RECONSTRUCTED (EACH)	COMB. CONC. C&G REMOVAL & REPLACEMENT (LF)	DRAINAGE STRUCTURE TO BE CLEANED (EACH)		DRNG. STRUC. LINING (LF)
141	11893 S. KEDZIE	CB	1	-	-	-	-	-	-	-	10	1	-	MINOR ADJUSTMENT IN CONCRETE RINGS. STRUCTURE TO BE ADJUSTED.
142	11889 S. KEDZIE	CB	-	-	-	-	-	-	-	-	-	-	4.5	CRACKS AROUND CB. STRUCTURE TO BE ADJUSTED.
143	11801 S. KEDZIE	CB	-	-	-	-	-	-	-	-	-	1	-	
144	11755 S. KEDZIE	CB	-	-	-	-	-	-	-	-	-	-	4.9	
145	11741 S. KEDZIE	CB	-	-	-	-	-	-	-	-	-	1	-	KEDZIE AND PARK LN
146	11739 S. KEDZIE	CB	-	-	-	-	-	-	-	-	-	1	-	KEDZIE AND PARK LN
147	11739 S. KEDZIE	CB	-	-	-	-	-	-	-	-	10	-	7.2	6 INCHES OFFSET AWAY FROM GUTTER. STRUCTURE TO BE ADJUSTED.
148	11723 S. KEDZIE	CB	-	-	-	-	-	-	-	-	-	-	5	WITHIN ASPHALT AREA. ADJUSTMENT NEEDED UNDER FRAME. STRUCTURE TO BE ADJUSTED.
149	11651 S. KEDZIE	CB	-	-	-	-	-	-	-	-	10	-	4.7	* STRUCTURE TO BE ADJUSTED.
150	11629 S. KEDZIE	MH	-	-	-	-	-	-	-	-	-	-	7.1	WITHIN ROADWAY AT 116TH PL AND KEDZIE. CLOSED LID.
151	11621 S. KEDZIE	CB	-	-	-	1	-	-	-	-	10	-	7.7	MAJOR ADJUSTMENT NEEDED UNDER FRAME. STRUCTURE TO BE RECONSTRUCTED.
152	11551 S. KEDZIE	CB	-	-	-	1	-	-	-	-	10	-	7.7	CB IS SINKING, MAJOR ADJUSTMENT UNDER FRAME IS NEEDED. STRUCTURE TO BE RECONSTRUCTED.
153	11533 S. KEDZIE	MH	-	-	-	-	-	-	-	-	-	-	8.1	WITHIN ROADWAY, CLOSED LID.
154	11531 S. KEDZIE	MH	-	-	-	-	-	-	-	-	-	1	-	WITHIN ROADWAY, CLOSED LID.
155	11517 S. KEDZIE	CB	-	-	-	-	-	-	-	-	-	-	6.7	CB IS SINKING, ADJUST 1-2' NEEDED UNDER FRAME, PIPE TO BE CLEANED. BRICK WORK UNDER FRAME. STRUCTURE TO BE ADJUSTED.
SUB-TOTAL			1	-	-	2	-	-	-	-	50	5	63.6	
* SEE NOTE 2 ON SHEET 13 OF 20														
KEDZIE AVE. _ TOTAL			17	1	5	6	2	2	4	-	550	61	620.4	

NO.	DESCRIPTION	SCHEDULE													COMMENTS
		STRUC. TYPE	CB TO BE ADJUSTED (EACH)	CB TO BE ADJUSTED W NEW TYPE 1 FRAME, OPEN LID (EACH)	CB TO BE ADJUSTED W NEW TYPE 24 FRAME AND GRATE (EACH)	CB TO BE RECONSTRUCTED (EACH)	CB TO BE RECONSTRUCTED W. NEW TYPE 24 FRAME & GRATE (EACH)	MH TO BE ADJUSTED (EACH)	MH TO BE ADJUSTED W NEW TYPE 1 FRAME, CLOSED LID (EACH)	MH TO BE RECONSTRUCTED (EACH)	COMB. CONC. C&G REMOVAL & REPLACEMENT (LF)	DRAINAGE STRUCTURE TO BE CLEANED (EACH)	DRNG. STRUC. LINING (LF)		
1	3187 W. 115th ST.	MH	-	-	-	-	-	-	-	-	10	-	3.9	STRUCTURE ADJUSTMENT.	
2	3179 W. 115th ST.	CB	1	-	-	-	-	-	-	-	10	1	-	STRUCTURE ADJUSTMENT.	
3	3165 W. 115th ST.	CB	-	-	-	-	-	-	-	-	10	-	7.7	STRUCTURE ADJUSTMENT.LOCATED INFRONT OF MERIONETTE FIRE DEPT.	
4	3101 W. 115th ST.	CB	-	-	-	-	-	-	-	-	-	-	7.8	STRUCTURE ADJUSTMENT.WITHIN ASPHALT AREA.	
5	3001 W. 115th ST.	CB	-	-	-	-	-	-	-	-	10	-	2	RINGS ARE SHIFTING 8 INCHES. STRUCTURE ADJUSTMENT.	
6	3001 W. 115th ST.	CB	-	-	-	1	-	-	-	-	-	-	7.6	WITHIN ASPHALT AREA. CB WITH CLOSED LID NEXT TO INLET. CB TO BE RECONSTRUCTED.	
7	2891 W. 115th ST.	CB	-	-	-	-	-	-	-	-	10	-	3.6	STRUCTURE ADJUSTMENT.	
8	2891 W. 115th ST.	MH	-	-	-	-	-	-	-	-	-	-	3.7	* * MH IN ASPHALT AREA.	
9	2851 W. 115th ST.	CB	-	-	-	-	-	-	-	-	-	-	7.7	* CB NEXT TO INLET, WITHIN ROADWAY.	
10	2851 W. 115th ST.	CB	-	-	-	1	-	-	-	-	10	-	7.1	CB IS SINKING, NEED TO BE BROUGHT UP AT LEAST 6". STRUCTURE TO BE RECONSTRUCTED.	
11	2825 W. 115th ST.	MH	-	-	-	-	-	-	-	-	-	-	10	* * WITHIN ASPHALT AREA	
12	2821 W. 115th ST.	CB	-	-	-	-	-	-	-	-	10	-	6	CRACK UNDER FRAME. STRUCTURE ADJUSTMENT.	
13	2821 W. 115th ST.	MH	-	-	-	-	-	-	-	-	-	-	6.3	WITHIN ASPHALT AREA. MH WITH CLSOED LID.	
14	2801 W. 115th ST.	MH	-	-	-	-	-	-	-	-	-	-	6.7	WITHIN ASPHALT AREA. MH IS HIGH, NEEDS 4 INCHES ADJUSTMENT (TO BE LOWERED).	
15	2747 W. 115th ST.	CB	-	-	-	-	-	-	-	-	10	-	6.7	WITHIN ASPHALT AREA. STRUCTURE ADJUSTMENT, 2 FT ADJUSTMENT UNDER FRAME.	
16	2745 W. 115th ST.	MH	-	-	-	-	-	-	-	-	-	-	4.3	WITHIN ASPHALT AREA.	
17	2701 W. 115th ST.	CB	-	-	-	1	-	-	-	-	10	-	2.2	INLET IS SINKING. STRUCTURE TO BE RECONSTRUCTED.	
18	2631 W. 115th ST.	CB	-	-	-	-	-	-	-	-	-	-	4.2		
19	2613 W. 115th ST.	CB	-	-	-	-	-	-	-	-	10	-	6.7	*	
20	2501 W. 115th ST.	CB	-	-	-	1	-	-	-	-	10	-	4.1	HEAVY DAMAGE. NEED TO BE RECONSTRUCTED WHOLE CB IS WASHED OUT. CB IS SINKING.	
SUB-TOTAL			1	-	-	4	-	-	-	-	110	1	108.3	* SEE NOTE 2 ON SHEET 13 OF 20 * * SEE NOTE 3 ON SHEET 13 OF 20	





**NOTES:**

EXISTING BROKEN FRAMES AND LIDS SHALL BE REMOVED AND DISPOSED OF BY THE CONTRACTOR AND SHALL BE REPLACED AS DIRECTED BY THE ENGINEER.

CITY OF CHICAGO CASTINGS ARE THE PROPERTY OF THE CITY AND THE CONTRACTOR SHALL NOTIFY THE CITY FOR REMOVAL AND DISPOSITION OF THE CASTINGS.

NEW FRAMES AND LIDS, WHEN SPECIFIED, WILL BE PAID FOR SEPARATELY.

WHEN STRUCTURES ARE TO BE ADJUSTED OR RECONSTRUCTED, THE LOWERING AND RAISING OF THE FRAMES AND LIDS WILL NOT BE PAID FOR SEPARATELY BUT WILL BE INCLUDED IN THE COST OF THE CORRESPONDING PAY ITEM.

**LEGEND**

- ① SUB-BASE GRANULAR MATERIAL
- ② EXISTING PAVEMENT
- ③ EXISTING STRUCTURE
- ④ FRAME AND LID (SEE NOTES)
- ⑤ CLASS PP-1\* CONCRETE
- ⑥ PROPOSED HMA SURFACE COURSE MIX "D", N70

**DETAILS FOR FRAMES AND LIDS ADJUSTMENT**  
DETAIL

ALL DIMENSIONS ARE IN INCHES (MILLIMETERS) UNLESS OTHERWISE SHOWN

FILE NAME =	USER NAME = dahhr	DESIGNED - R. SHAH	REVISED - R. WIEDEMAN 05-14-04
p:\11\084EBIDINTEG.illinois.gov\PIWIDOT\Documents\IDOT Offices\District 1\Projects\1398\Drawings\Design\DistStd.dgn		CHECKED -	REVISED - R. BORO 01-01-07
		PLOT SCALE = 100.0000' / 1in.	REVISED - R. BORO 03-09-11
		PLOT DATE = 8/24/2015	REVISED - R. BORO 12-06-11

**STATE OF ILLINOIS**  
**DEPARTMENT OF TRANSPORTATION**

**DETAILS FOR**  
**FRAMES AND LIDS ADJUSTMENT**

SCALE: NONE SHEET NO. 1 OF 1 SHEETS STA. TO STA.

F.A. RTE.	SECTION	COUNTY	TOTAL SHEETS	SHEET NO.
VAR.	2015-056T	COOK	19	14
FED. ROAD DIST. NO. 1   ILLINOIS FED. AID PROJECT			CONTRACT NO. 62B20	

VARIABLE - TO MEET EXISTING DIMENSIONS AND FIELD CONDITIONS (SEE NOTE ②)

PROP. CONC. CURB OR CURB AND GUTTER REPLACEMENT IN ACCORDANCE WITH STATE STANDARD 606001. (SEE NOTE ②)

SAW CUT FULL DEPTH - INCLUDED IN THE COST OF SIDEWALK, DRIVEWAY OR MEDIAN SURFACE REMOVAL PAY ITEM.

SEE STATE STANDARD 606001  
EXISTING OR PROPOSED HMA SURFACE (IF APPLICABLE)

18" (450) MAX.

1/4" (5) \*\*

EXISTING SIDEWALK, DRIVEWAY, MEDIAN SURFACE, SOD OR GROUND.

PROPOSED SIDEWALK, DRIVEWAY PAVEMENT, MEDIAN SURFACE OR SODDING SALT TOLERANT WITH TOP SOIL, 4" (100) SOD RESTORATION (SEE NOTE ①).

EXISTING CONCRETE PAVEMENT, CONCRETE BASE COURSE OR FLEXIBLE PAVEMENT

3" (75) MIN.

SUITABLE BACKFILL MATERIAL (INCLUDED IN THE COST OF CURB OR CURB AND GUTTER REMOVAL AND REPLACEMENT)

PROPOSED 3/4" (20) PREFORMED EXPANSION JOINT AT CONCRETE SIDEWALKS, DRIVEWAYS, AND MEDIANS. (INCLUDED IN THE COST OF CURB OR CURB AND GUTTER REMOVAL AND REPLACEMENT.)

\* 3" (75) MINIMUM FROM TOP AND BOTTOM OF THE CONCRETE PAVEMENT OR BASE COURSE.

\*\* IF THE FINAL SURFACE OF THE PAVEMENT IS CONCRETE, THE GUTTER IS TO BE FLUSH WITH THE PAVEMENT.

UNSUITABLE SUB-BASE MATERIAL TO BE REMOVED, IF DIRECTED BY THE ENGINEER, SHALL BE REPLACED WITH EITHER SUB-BASE GRANULAR MATERIAL, TYPE B OR ADDITIONAL THICKNESS OF CONCRETE.

NOTE: ① SIDEWALK, DRIVEWAY PAVEMENT OR MEDIAN SURFACE SHALL BE SIMILAR TO THE MATERIAL BEING REMOVED AND WILL BE PAID FOR SEPARATELY.

SODDING, SALT TOLERANT AND TOP SOIL, FURNISH AND PLACE 4" WILL BE PAID FOR SEPARATELY.

REMOVAL AND REPLACEMENT 4" (100) OR LESS IS INCLUDED IN THE COST OF CURB OR CURB AND GUTTER REMOVAL AND REPLACEMENT.

② FERTILIZER FOR THE PLACEMENT OF THE SOD IS NOT REQUIRED

③ CURB OR CURB AND GUTTER REPLACEMENT SHALL MATCH THE SHAPE OF THE EXISTING CURB OR CURB AND GUTTER UNLESS OTHERWISE SPECIFIED.

REMOVAL AND REPLACEMENT IN EXCESS OF 4" (100) WILL BE PAID FOR IN ACCORDANCE WITH ARTICLE 109.04 OF THE STANDARD SPECIFICATIONS.

④ FOR CURB OR CURB AND GUTTER REMOVAL AND REPLACEMENT ADJACENT TO FLEXIBLE PAVEMENT DELETE EPOXY COATED TIE BARS.

PROPOSED #6 (20) EPOXY COATED TIE BARS 24" (600) LONG AT 24" (600) CENTERS WILL NOT BE PAID FOR SEPARATELY. DELETE EPOXY COATED TIE BARS IF EXISTING TIE BARS ARE USABLE AS DETERMINED BY THE ENGINEER. (SEE NOTE ③).

⑤ LONGITUDINAL BARS, IF ENCOUNTERED IN THE EXISTING CURB OR CURB AND GUTTER, ARE NOT TO BE REPLACED. CUTTING AND REMOVING LONGITUDINAL BARS SHALL BE INCLUDED IN THE COST OF CURB OR CURB AND GUTTER REMOVAL AND REPLACEMENT.

⑥ THE COST OF HMA SURFACE REMOVAL IN THE EXISTING GUTTER FLAG SHALL BE INCLUDED IN THE COST OF THE CURB AND GUTTER REMOVAL AND REPLACEMENT.

BASIS OF PAYMENT:  
THIS WORK WILL BE PAID FOR AT THE CONTRACT UNIT PRICE PER FOOT (METER) FOR "CURB REMOVAL AND REPLACEMENT" OR "COMBINATION CONCRETE CURB AND GUTTER REMOVAL AND REPLACEMENT".

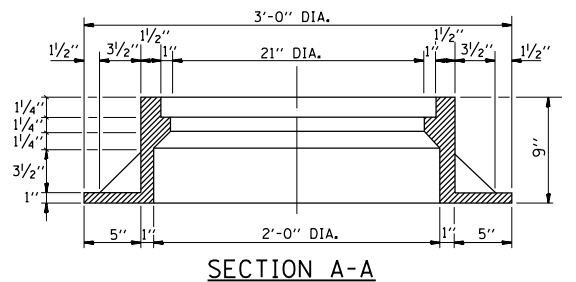
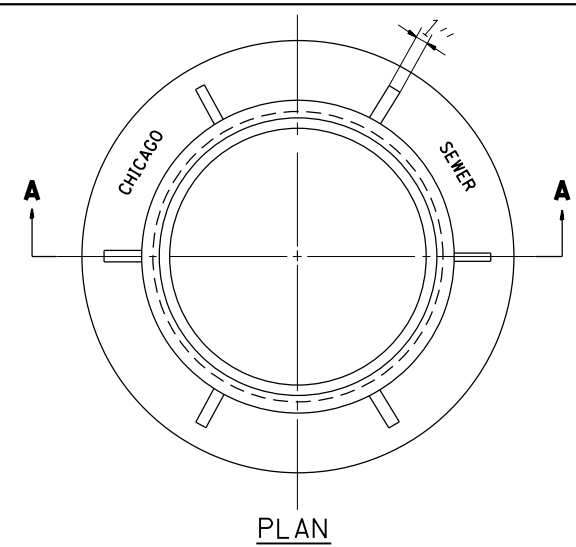
⑦ THE REMOVAL AND REPLACEMENT OF THE EXISTING CURB OR CURB AND GUTTER SHALL BE DONE IN ACCORDANCE WITH THE APPLICABLE PORTIONS OF SECTION 440 AND 606 OF THE STANDARD SPECIFICATIONS.

⑧ THE LOCATIONS OF REMOVAL AND REPLACEMENT OF EXISTING CURB OR CURB AND GUTTER SHALL BE DETERMINED BY THE RESIDENT ENGINEER AT THE TIME OF CONSTRUCTION.

# CURB OR CURB AND GUTTER REMOVAL AND REPLACEMENT

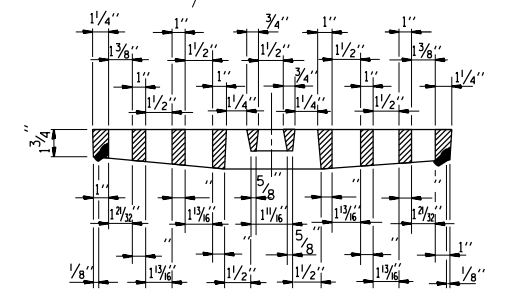
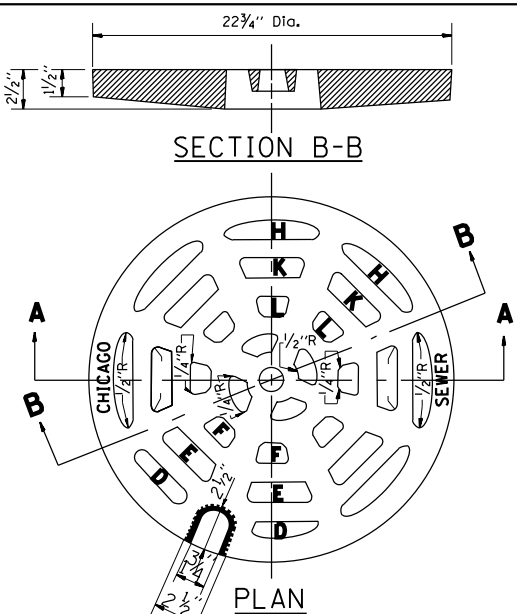
ALL DIMENSIONS ARE IN INCHES (MILLIMETERS) UNLESS OTHERWISE SHOWN.

FILE NAME =	USER NAME = dahhr	DESIGNED - A. HOUSEH	REVISED - R. SHAH 10-03-96	<b>STATE OF ILLINOIS DEPARTMENT OF TRANSPORTATION</b>	<b>CURB OR CURB AND GUTTER REMOVAL AND REPLACEMENT</b>			F.A. RTÉ.	SECTION	COUNTY	TOTAL SHEETS	SHEET NO.
pw\1\084EBIDINTEG.illinois.gov\PIWIDOT\Documents\DOT Offices\District 1\Projects\DI399\Drawings\Design\DistStd.dgn		REVISED - A. ABBAS 03-21-97	REVISED - M. GOMEZ 01-22-01					VAR.	2015-056T	COOK	19	15
PLOT SCALE = 100.0000' / 1in.	CHECKED -	REVISED - R. BORO 12-15-09			<b>BD600-06 (BD-24)</b>			<b>CONTRACT NO. 62B20</b>				
PLOT DATE = 8/24/2015	DATE - 03-11-94				SCALE: NONE	SHEET NO. 1 OF 1 SHEETS	STA.	TO STA.		FED. ROAD DIST. NO. 1   ILLINOIS FED. AID PROJECT		

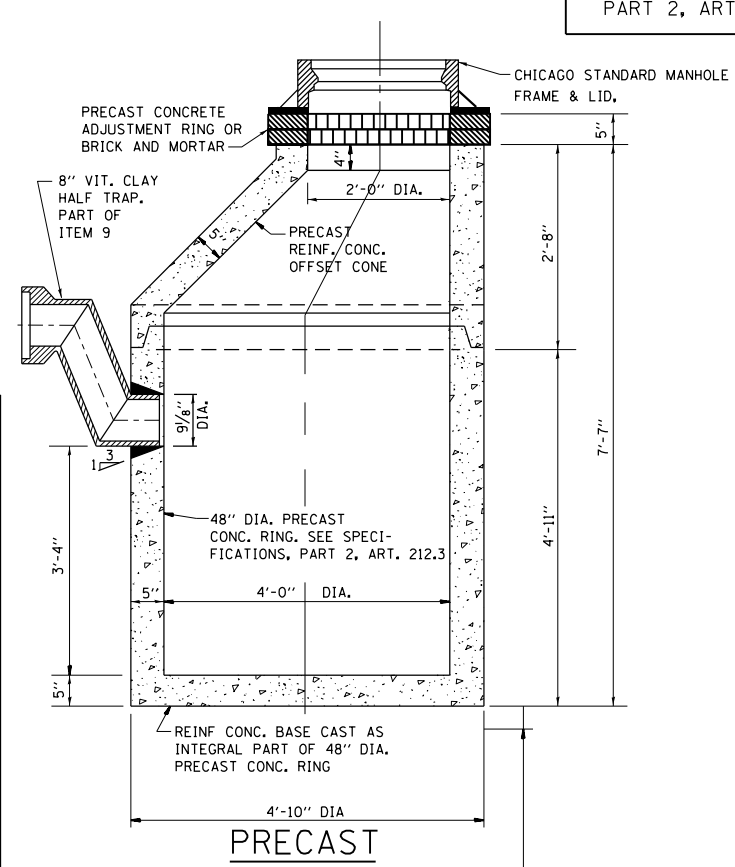
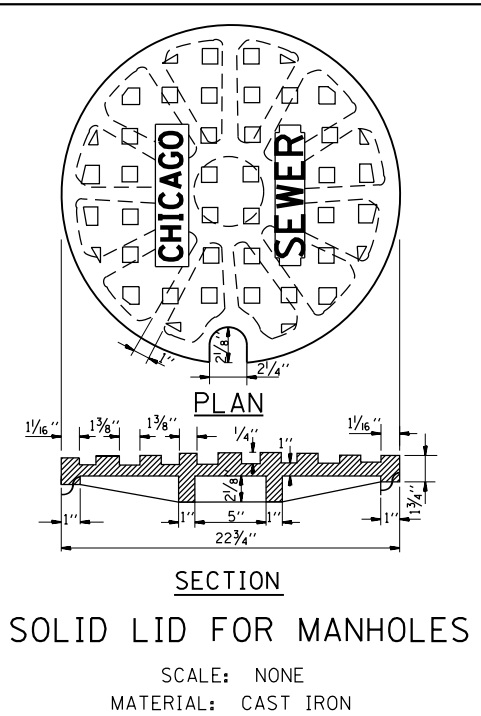
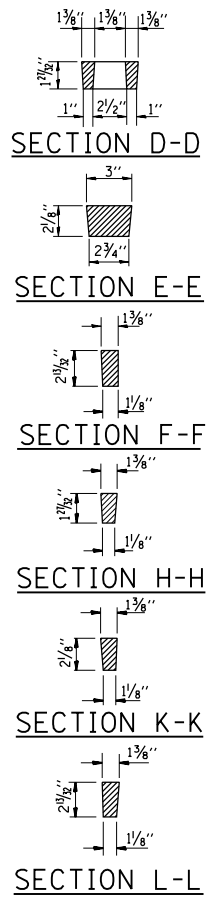


NOTE: METAL PLATES MUST BE FURNISHED FOR PERFORATED LIDS ON MANHOLES

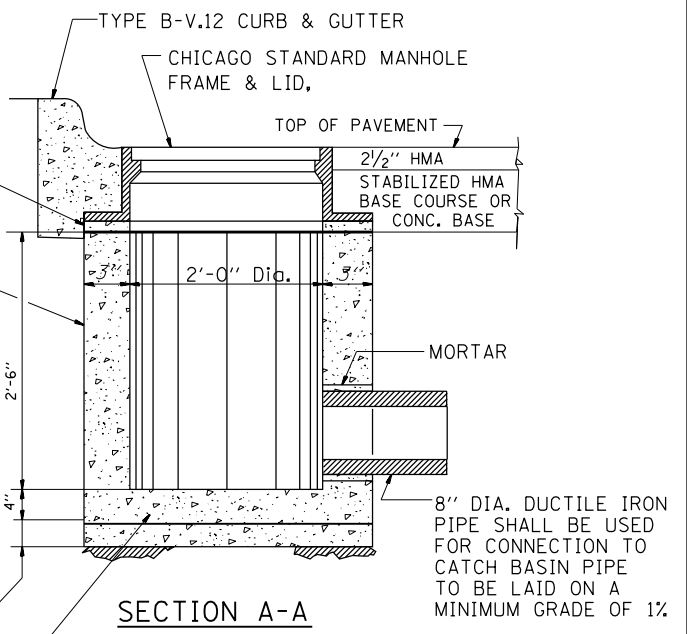
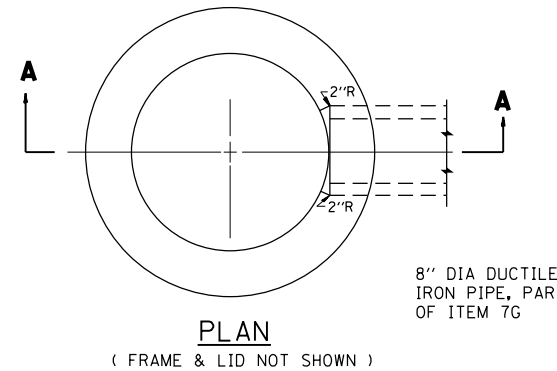
**CHICAGO STANDARD MANHOLE FRAME**  
SCALE: 1/2"=1'-0"  
MATERIAL: CAST IRON



**PERFORATED LID FOR CATCH BASINS & MANHOLES**  
SCALE: 2"=1'-0"  
MATERIAL: CAST IRON



**STANDARD CATCH BASINS**  
SCALE: 3/4"=1'-0"  
ITEM 9

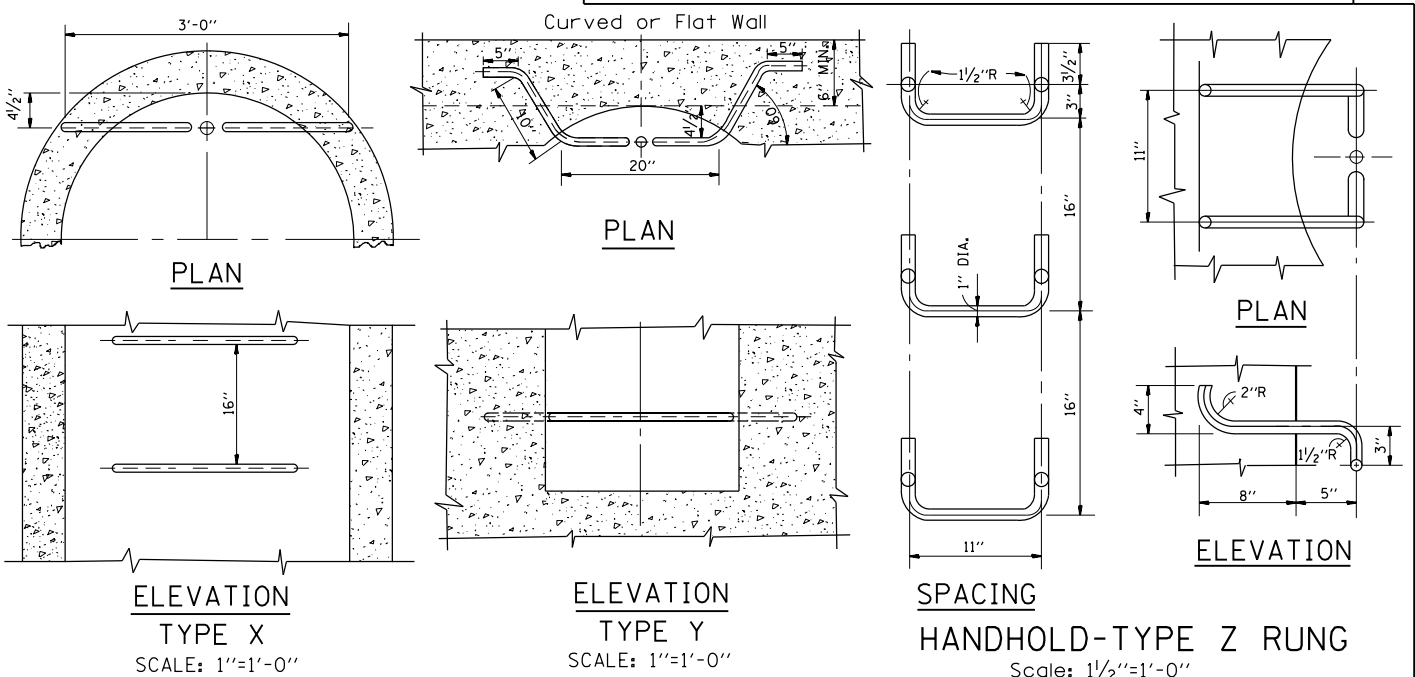


**STANDARD INLETS**  
SCALE 1"=1'-0"  
ITEM 12

THIS INLET DETAIL IS SOMETIMES REFERRED TO AS "CHICAGO STANDARD INLET, TYPE A"

NOTE: INLETS SHALL NOT BE CONSTRUCTED UNLESS IT IS IMPOSSIBLE TO CONSTRUCT A CATCH BASIN. THE CONTRACTOR SHALL HAVE THE DEPARTMENT OF SEWERS APPROVAL BEFORE CONSTRUCTING INLETS.

CITY OF CHICAGO  
DEPARTMENT OF SEWERS  
ENGINEERING DIVISION



**STANDARD LADDER RUNGS**

ALL LADDER RUNGS SHALL BE ALUMINUM OR GALVANIZED WROUGHT IRON AS SPECIFIED IN THE SPECIFICATIONS, PART 2, ARTICLE 214.2. RUNGS SHALL BE 1" DIAMETER OR OF A SHAPE HAVING AN EQUIVALENT CROSS-SECTIONAL AREA.

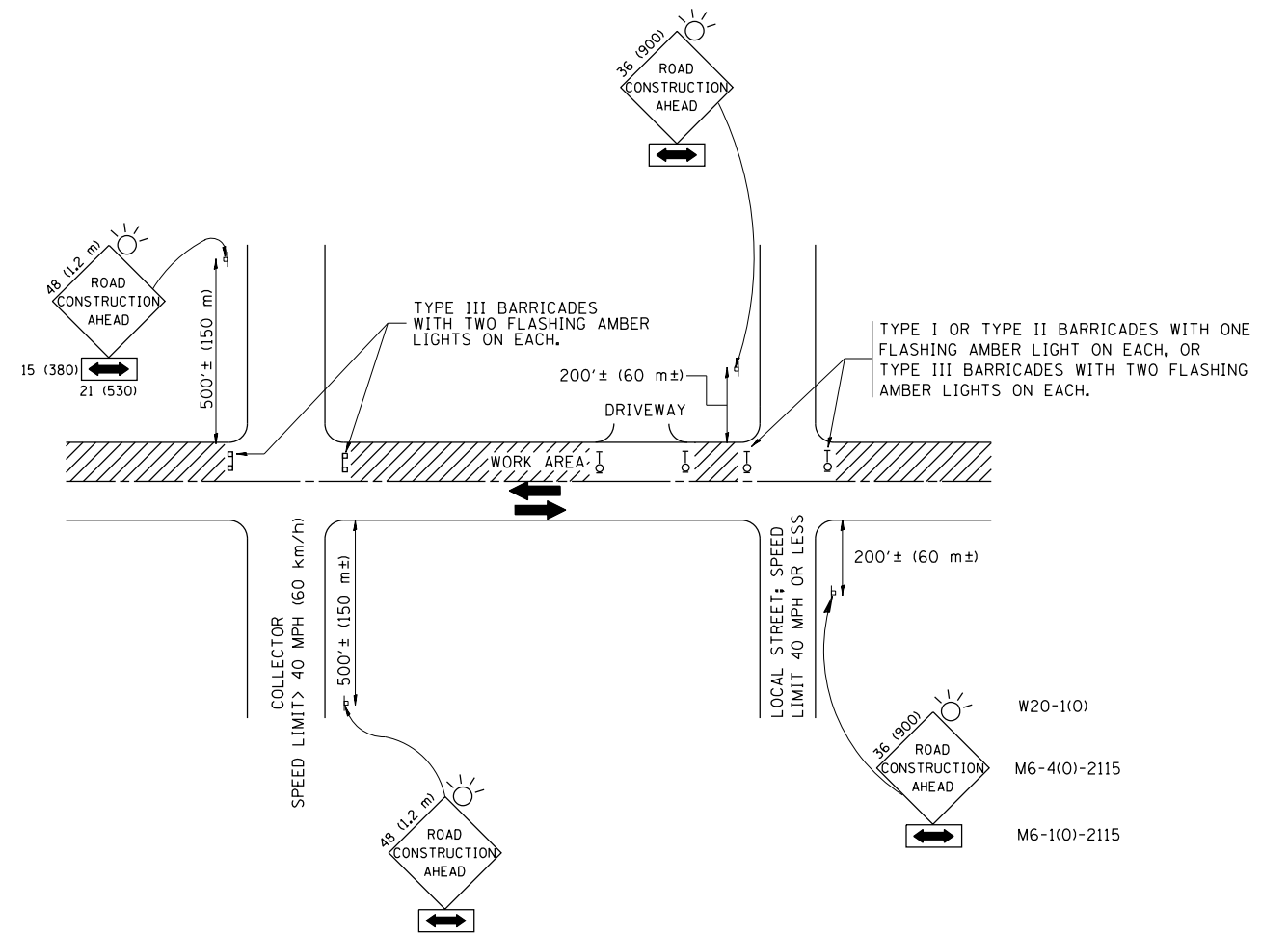
FILE NAME =	USER NAME = dahhr	DESIGNED - M. GOMEZ	REVISED -
pw\1\084EBIDINTEG.illinois.gov\PIWID\Documents\DOT Offices\District 1\Projects\D139\BROW\Meta\Design\DistStd.dgn	DRAWN	CHECKED -	REVISED -
PLOT SCALE = 100.0000' / in.	DATE - 01-25-01	REVISED -	REVISED -
PLOT DATE = 8/24/2015		REVISED -	

STATE OF ILLINOIS  
DEPARTMENT OF TRANSPORTATION

CITY OF CHICAGO			
CATCH BASIN, INLET AND MANHOLE DETAILS			
SCALE: NONE	SHEET NO. 1 OF 1 SHEETS	STA.	TO STA.

F.A. RTE.	SECTION	COUNTY	TOTAL SHEETS	SHEET NO.
	2015-056T	COOK	19	16
BD600-13 (BD47)		CONTRACT NO. 62B20		
FED. ROAD DIST. NO. 1 ILLINOIS FED. AID PROJECT				





TRAFFIC CONTROL AND PROTECTION FOR SIDE ROADS, INTERSECTIONS, AND DRIVEWAYS

NOTES:

A. FOR NO LANE RESTRICTION ON THE SIDE ROAD OR DRIVEWAYS

1. SIDE ROAD WITH A SPEED LIMIT OF 40 MPH (60 km/h) OR LESS AS SHOWN ON THE DRAWING AND AS DIRECTED BY THE ENGINEER:
  - a) ONE ROAD CONSTRUCTION AHEAD SIGN 36 x 36 (900x900) WITH A FLASHER AND FLAG MOUNTED ON IT APPROXIMATELY 200' (60 m) IN ADVANCE OF THE MAIN ROUTE.
  - b) THE CLOSED PORTION OF THE MAIN ROUTE SHALL BE PROTECTED BY BLOCKING WITH TYPE I, TYPE II OR TYPE III BARRICADES, 1/3 OF THE CROSS SECTION OF THE CLOSED PORTION.
2. SIDE ROAD WITH A SPEED LIMIT GREATER THAN 40 MPH (60 km/h) AS SHOWN ON THE DRAWING AND AS DIRECTED BY THE ENGINEER:
  - a) ONE ROAD CONSTRUCTION AHEAD SIGN 48 x 48 (1.2 m x 1.2 m) WITH A FLASHER MOUNTED ON IT APPROXIMATELY 500' (150 m) IN ADVANCE OF THE MAIN ROUTE.
  - b) THE CLOSED PORTION OF THE MAIN ROUTE SHALL BE PROTECTED BY BLOCKING WITH TYPE III BARRICADES, 1/2 OF THE CROSS SECTION OF THE CLOSED PORTION.
3. WHEN THE SIDE ROAD LIES BETWEEN THE BEGINNING OF THE MAINLINE SIGNING AND THE WORK ZONE, A SINGLE HEADED ARROW (M6-1) SHALL BE USED IN LIEU OF THE DOUBLE HEADED ARROW (M6-4).

B. FOR A LANE CLOSURE ON A SIDE ROAD OR DRIVEWAY:

- USE APPLICABLE PORTIONS OF THE TYPICAL APPLICATION OF TRAFFIC CONTROL DEVICES (STD. 701501, STD. 701606 OR THE APPROPRIATE STANDARD). THE SPACING OF SIGNS AND BARRICADES SHALL BE ADJUSTED FOR FIELD CONDITIONS AS DIRECTED BY THE ENGINEER. THE DIRECTIONAL ARROW SHALL BE COVERED OR REMOVED WHEN NO LONGER CONSISTENT WITH THE SIDE ROAD LANE CLOSURE.
- C. ADVANCE WARNING SIGNS ARE TO BE OMITTED ON DRIVEWAY UNLESS OTHERWISE NOTED.
- D. THE TRAFFIC CONTROL AND PROTECTION FOR SIDE ROADS, INTERSECTIONS, AND DRIVEWAYS SHALL BE INCIDENTAL TO THE COST OF SPECIFIED TRAFFIC CONTROL STANDARDS OR ITEMS.

All dimensions are in millimeters (inches) unless otherwise shown.

FILE NAME =	USER NAME = dahhr	DESIGNED - LHA	REVISED - J. OBERLE 10-18-95
p:\1\084EBIDINTEG\illinois.gov\PIWIDOT\Documents\IDOT Offices\District 1\Projects\DI398\Drawings\Design\DistStd.dgn			REVISED - A. HOUSEH 03-06-96
	PLOT SCALE = 100.0000' / in.	CHECKED -	REVISED - A. HOUSEH 10-15-96
	PLOT DATE = 8/24/2015	DATE - 06-89	REVISED - T. RAMMACH 01-06-00

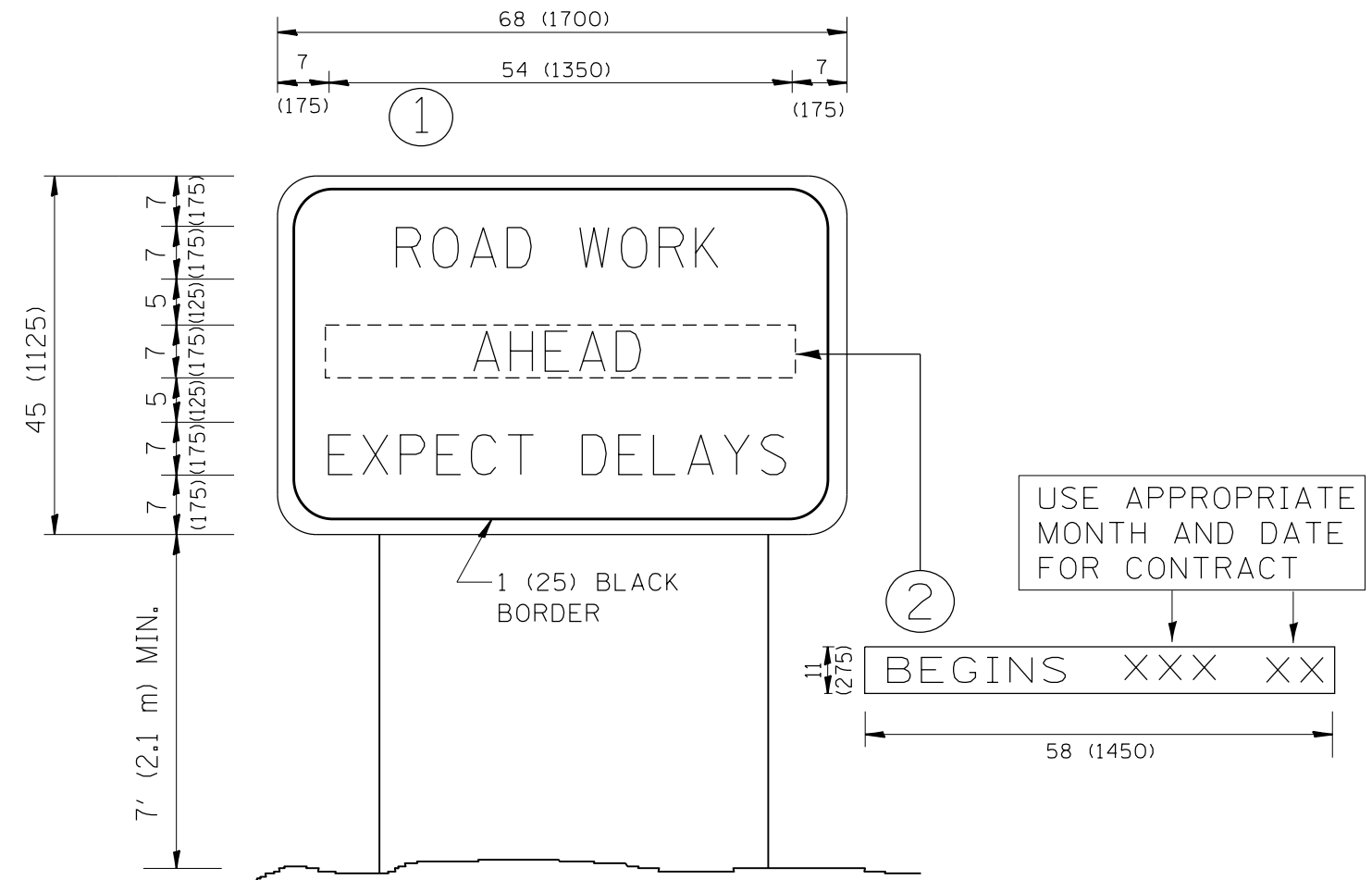
STATE OF ILLINOIS  
DEPARTMENT OF TRANSPORTATION

TRAFFIC CONTROL AND PROTECTION FOR  
SIDE ROADS, INTERSECTIONS, AND DRIVEWAYS

SCALE: NONE SHEET NO. 1 OF 1 SHEETS STA. TO STA.

F.A. RTE.	SECTION	COUNTY	TOTAL SHEETS	SHEET NO.
VAR.	2015-056T	COOK	19	17
TC-10			CONTRACT NO. 62B20	
FED. ROAD DIST. NO. 1 ILLINOIS FED. AID PROJECT				





**NOTES:**

1. USE BLACK LETTERING ON ORANGE BACKGROUND.
2. ERECT SIGNS IN ADVANCE OF THE LOCATION FOR THE "ROAD CONSTRUCTION AHEAD" SIGN AT LOCATIONS AS DIRECTED BY THE ENGINEER.
3. ERECT SIGN ① WITH INSTALLED PANEL ② ONE WEEK PRIOR TO THE START OF CONSTRUCTION.
4. REMOVE PANEL ② SOON AFTER THE START OF CONSTRUCTION.
5. SEE SPECIAL PROVISION FOR "TEMPORARY INFORMATION SIGNING" FOR ADDITIONAL INFORMATION.
6. ONE SIGN ASSEMBLY EQUALS 25.70 SQ. FT. (2.3 SQ. M.)
7. SHALL BE PAID FOR AS TEMPORARY INFORMATION SIGNING.

ALL DIMENSIONS ARE IN INCHES (MILLIMETERS) UNLESS OTHERWISE SHOWN.

FILE NAME =	USER NAME = dahhr	DESIGNED -	REVISED - R. MIRS 09-15-97
p:\11\084EBIDINTEG.illinois.gov\PWIDOT\Documents\DOT Offices\District 1\Projects\DI39\Drawings\Design\DistStd.dgn		CHECKED -	REVISED - R. MIRS 12-11-97
		DATE -	REVISED - T. RAMMACHER 02-02-99
			REVISED - C. JUCIUS 01-31-07

**STATE OF ILLINOIS  
DEPARTMENT OF TRANSPORTATION**

**ARTERIAL ROAD  
INFORMATION SIGN**

SCALE: NONE SHEET NO. 1 OF 1 SHEETS STA. TO STA.

F.A. RTE.	SECTION	COUNTY	TOTAL SHEETS	SHEET NO.
VAR.	2015-056T	COOK	19	19
TC-22		CONTRACT NO. 62B20		
FED. ROAD DIST. NO. 1   ILLINOIS FED. AID PROJECT				