

- 1 COVER SHEET
- 2 GENERAL NOTES
- 3 SUMMARY OF QUANTITIES
- 4-7 BRIDGE SEALING SCHEDULE
- 8-11 LOCATION MAPS
- 12 SEALING DETAILS

STANDARDS

- 000001-06 STANDARD SYMBOLS, ABBREVIATIONS AND PATTERNS
- 701201-04 LANE CLOSURE, 2L, 2W, DAY ONLY, FOR SPEEDS ≥ 45 MPH
- 701400-08 APPROACH TO LANE CLOSURE, FREEWAY/EXPRESSWAY
- 701406-09 LANE CLOSURE, FREEWAY/EXPRESSWAY, DAY OPERATIONS ONLY
- 701411-09 LANE CLOSURE, MULTILANE, AT ENTRANCE OR EXIT RAMP FOR SPEEDS ≥ 45 MPH
- 701428 TRAFFIC CONTROL SETUP AND REMOVAL FREEWAY/EXPRESSWAY
- 701456-03 PARTIAL EXIT RAMP CLOSURE FREEWAY/EXPRESSWAY
- 701501-06 URBAN LANE CLOSURE, 2L, 2W, UNDIVIDED
- 701601-09 URBAN LANE CLOSURE, MULTILANE, 1W OR 2W WITH NONTRAVERSABLE MEDIAN
- 701602-07 URBAN LANE CLOSURE, MULTILANE, 2W WITH BIDIRECTIONAL LEFT TURN LANE
- 701606-10 URBAN LANE CLOSURE, MULTILANE, 2W WITH MOUNTABLE MEDIAN
- 701901-04 TRAFFIC CONTROL DEVICES

MICROFILMED _____
 REEL NUMBER _____
 AWARDED _____
 RESIDENT ENGINEER _____
 AS BUILT CHANGES WERE MADE
 ON THE FOLLOWING SHEETS _____

J.U.L.I.E.
 JOINT UTILITY LOCATION INFORMATION FOR EXCAVATION
 1-800-892-0123
 OR 811

PROJECT ENGINEER: CRAIG REED 815-434-8420
 UNIT CHIEF: BRAD DUNCAN 815-434-8562

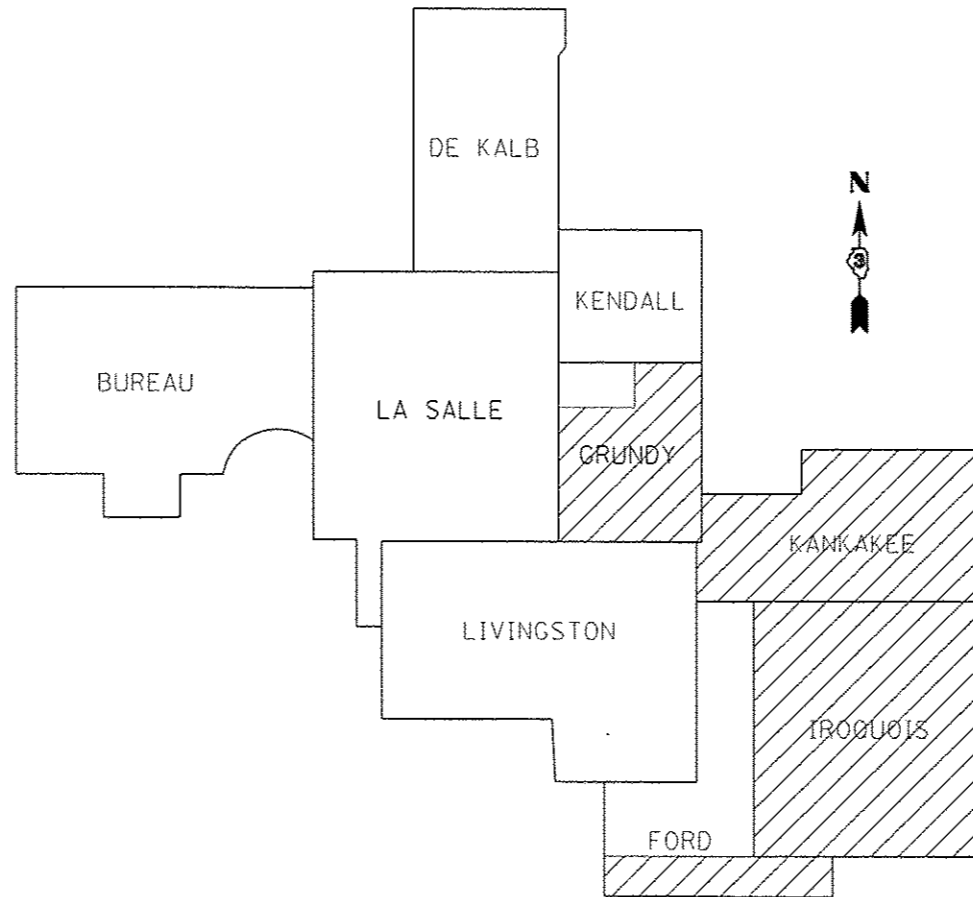
CONTRACT NO. 66E86

STATE OF ILLINOIS
DEPARTMENT OF TRANSPORTATION
DIVISION OF HIGHWAYS
PROPOSED
HIGHWAY PLANS

VARIOUS ROUTES
SECTION D3 BRIDGE DECK SEALING FY 2016

BRIDGE DECK SEALING
VARIOUS COUNTIES

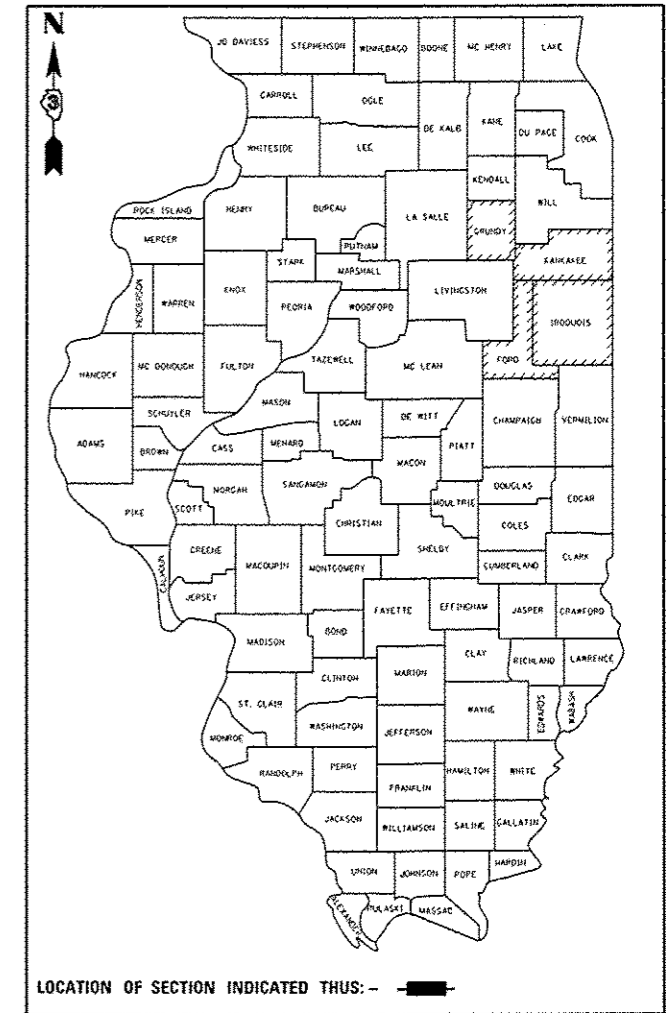
C-93-116-15



F.A. RTE.	SECTION	COUNTY	TOTAL SHEETS	SHEET NO.
VARIOUS	*	VARIOUS	12	1

ILLINOIS CONTRACT NO. 66E86
 #3 BRIDGE DECK SEALING FY 2016

D-93-056-15



STATE OF ILLINOIS
 DEPARTMENT OF TRANSPORTATION
 DIVISION OF HIGHWAYS

SUBMITTED August 19 2015
Paul Loetz
 DEPUTY DIRECTOR OF HIGHWAYS, REGION ENGINEER

Oct 2 2015
Don D. Baranzelli P.E.
 ENGINEER OF DESIGN AND ENVIRONMENT

Oct 2 2015
Osman P.E.
 DIRECTOR OF HIGHWAYS, CHIEF ENGINEER

PRINTED BY THE AUTHORITY
OF THE STATE OF ILLINOIS

GENERAL NOTES

ANY REFERENCE TO A STANDARD IN THESE PLANS SHALL BE INTERPRETED TO MEAN THE EDITION AS INDICATED BY THE SUBNUMBER SHOWN IN THE LIST OF STANDARDS OR THE COPY INCLUDED IN THESE PLANS.

THE ENGINEER WILL BE THE SOLE JUDGE CONCERNING CURING TIME FOR THE SEALER.

STATE OF ILLINOIS
DEPARTMENT OF TRANSPORTATION
DISTRICT THREE

PREPARED BY: *Don Beaul*
DISTRICT STUDIES & PLANS ENGINEER

DATE: August 19, 2015

EXAMINED BY: *[Signature]*
DISTRICT CONSTRUCTION ENGINEER

[Signature]
DISTRICT MATERIALS ENGINEER

[Signature]
DISTRICT OPERATIONS ENGINEER

*03 BRIDGE DECK SEALING FY 2016

FILE NAME *	USER NAME * duncanbd	DESIGNED -	REVISED -	STATE OF ILLINOIS DEPARTMENT OF TRANSPORTATION	GENERAL NOTES	F.A. RTE.	SECTION	COUNTY	TOTAL SHEETS	SHEET NO.	
ct:\pwork\pwork\duncanbd\0445025\03	6E86-shr-cover.dgn	DRAWN -	REVISED -			VAR	*	VARIOUS	12	2	
MODELNAME	PLOT SCALE * 100.0000 / in.	CHECKED -	REVISED -			*03 BRIDGE DECK SEALING 2015 CONTRACT NO. 66E86					
	PLOT DATE * 8/17/2015	DATE -	REVISED -			ILLINOIS FED. AID PROJECT					
					SCALE:	SHEET	OF	SHEETS	STA.	TO STA.	

CODE NO.	ITEM	UNIT	TOTAL QUANTITY	CONSTR. CODE
				100% STATE BRIDGE 0014
67100100	MOBILIZATION	LSUM	1	1
70100420	TRAFFIC CONTROL AND PROTECTION, STANDARD 701411	EACH	4	4
70100450	TRAFFIC CONTROL AND PROTECTION, STANDARD 701201	LSUM	1	1
70100700	TRAFFIC CONTROL AND PROTECTION, STANDARD 701406	LSUM	1	1
70100825	TRAFFIC CONTROL AND PROTECTION, STANDARD 701456	LSUM	1	1
70102620	TRAFFIC CONTROL AND PROTECTION, STANDARD 701501	LSUM	1	1
70102625	TRAFFIC CONTROL AND PROTECTION, STANDARD 701606	LSUM	1	1
70102630	TRAFFIC CONTROL AND PROTECTION, STANDARD 701601	LSUM	1	1
70102632	TRAFFIC CONTROL AND PROTECTION, STANDARD 701602	LSUM	1	1
X5870015	BRIDGE DECK CONCRETE SEALER	SQ FT	1008796	1008796
X7010410	SPEED DISPLAY TRAILER	CAL MO	2	2

11

FILE NAME : USER NAME : duncambd DESIGNED - REVISIONS - p:\1108468IDINTEC\Illinois.gov\PIWIDOT\Documents\DOT Offices\District 3\Projects\0366\BROWN\0366E96-shr-600.dgn PLOT SCALE * 100.0000 "/>				STATE OF ILLINOIS DEPARTMENT OF TRANSPORTATION				SUMMARY OF QUANTITIES				F.A. R.T.E. SECTION COUNTY TOTAL SHEETS SHEET NO. VAR - VARIOUS 12 3	
PLOT DATE * 8/19/2015 CHECKED - DATE - REVISIONS -				SCALE: SHEET OF SHEETS STA. TO STA.				CONTRACT NO. 66E86 ILLINOIS FED. AID PROJECT					

*03 BRIDGE DECK SEALING FY 2016

CONCRETE SEALER

STRUCTURE NUMBER	FACILITY CARRIED	APPROXIMATE LOCATION	FEATURE CROSSED	DECK WIDTH FEET	PARAPET SURFACE FEET	MEDIAN SURFACE FEET	DECK LENGTH FEET	SEAL AREA SQ FT	TRAFFIC CONTROL AND PROTECTION STANDARD
FORD COUNTY NON-INTERSTATE									
027-0010	ILL 9	JCT I-57 AND ILL 9	I-57	37.5	4.6	18	221.9	13,336	701201
027-0026	ILL 54	2.1 MI S OF ILL 9 & 47	DRAINAGE DITCH	40	2		22.5	945	701201 *
027-0028	CH 5	2.8 MI S OF ILL 9	I-57	26.5	5		233.8	7,365	701201
027-0047	TR 72	2.4 MI N OF ILL 9	I-57	26.5	5		253	7,970	701201
027-0048	TR 91	1.3 MI N OF ILL 9	I-57	28.5	5		241.7	8,097	701201
027-0049	TR 105A	1.8 MI S OF ILL 9	I-57	26.5	5		222	6,993	701201
027-0084	ILL 9 & 47	0.3 MI S OF ILL 9	DRUMMER CREEK	36	7.4		87.5	3,798	701501
027-0085	ILL 9 & 47	0.1 MI N OF ILL 54	DRUMMER CREEK	36	7.4		145	6,293	701501
027-0086	ILL 54	0.5 MI W GIBSON CITY	DRUMMER CREEK	32	7.4		106.2	4,184	701201
027-0087	ILL 54	1.0 MI SW GIBSON CITY	DRUMMER CREEK	32	7.4		73.6	2,900	701201
027-0088	ILL 54	2.5 MI SW GIBSON CITY	DRUMMER CREEK BR	32	7.4		64.2	2,529	701201
027-0089	ILL 47	3.5 MI S OF ILL 9	DRUMMER CREEK	35.4	7.4		133	5,692	701201
FORD COUNTY SUB-TOTAL								70,102	
GRUNDY COUNTY INTERSTATE									
032-0005	I-55 NORTHBOUND	4.1 MILES SOUTH OF REED ROAD	MAZON RIVER	39	7.4		233.7	10,844	701406
032-0006	I-55 SOUTHBOUND		AT TR 125	39	7.4		233.7	10,844	701406
032-0007	I-55 NORTHBOUND	3.2 MILES SOUTH OF REED ROAD	I.C.G.	39	7.4		243.3	11,289	701406
032-0008	I-55 SOUTHBOUND		RAILROAD	39	7.4		243.3	11,289	701406
032-0117	SE I-80 RAMP	BRISBIN RO INTERCHANGE	COLLINS RUN	26.9	7.6		112	3,864	701456
032-0118	NE I-80 RAMP	BRISBIN RO INTERCHANGE	COLLINS RUN	26	7.6		103.5	3,478	701456
NON-INTERSTATE									
032-0023	ILL 53	1.3 MI N OF GARDNER	MAZON RIVER	42.5	5		200.5	9,524	701201
032-0025	US 6	4.9 MI E OF ILL 47	AUX SABLE CREEK	42.5	5		164.1	7,795	701201
032-0090	FAS 272/BRACEVILLE RD	2.5 MI S OF REED RD	I-55	30	7.4		221	8,265	701201
032-0091	FAS 299/REED RD	0.1 MI S OF WILL CO LN	I-55	57	7.4	5.4	165.2	11,531	701201
032-0092	TR 182	4.8 MI S OF REED RD	I-55	30	7.4		224.1	8,381	701201
032-0093	FAS 292/GARDNER RD	GARDNER RD INTERCHANGE	I 55	57	7.4	5.4	165.6	11,559	701201
032-0094	ILL 47	7.2 MI N OF I-55	MURRAY CREEK	40	7.4		109.6	5,195	701201
032-0098	ILL 113	3.1 MI E OF ILL 47	MAZON RIVER	35.4	7.4		254.3	10,884	701201
032-0110	ILL 47	N OF I-55	BREWSTER RUN	50.3	7.6		70	4,053	701201
032-0112	ILL 47	9.78 MI S OF I-80 @ MAZON	JOHNNY RUN	36	7.6		205.9	8,977	701201
032-0115	FAU 401/BRISBIN RD	3.72 MI E OF ILL 47	I-80	56	7.6	7.5	247.4	17,590	701201
032-0116	ILL 47	6.1 MI N OF I-55	W FORK MAZON RIVER	40	7.6		140	6,664	701201
GRUNDY COUNTY SUB-TOTAL								162,026	

* STRUCTURE HAS EXISTING PCC OVERLAY. ADDITIONAL DRYING TIME MAY BE REQUIRED.

CONCRETE SEALER

STRUCTURE NUMBER	FACILITY CARRIED	APPROXIMATE LOCATION	FEATURE CROSSED	DECK WIDTH FEET	PARAPET SURFACE FEET	MEDIAN SURFACE FEET	DECK LENGTH FEET	SEAL AREA SQ FT	TRAFFIC CONTROL AND PROTECTION STANDARD
IROQUOIS COUNTY INTERSTATE									
038-0001	I-57 SOUTHBOUND	1.0 MILES SOUTH OF GILMAN INTERCHANGE	SPRING CREEK	40	1		90.8	3,723	701406 *
038-0002	I-57 NORTHBOUND	9.0 MILES SOUTH OF ASHKUM INTERCHANGE	IC RAILROAD	40	1		90.8	3,723	701406 *
038-0003	I-57 SOUTHBOUND	8.8 MILES SOUTH OF ASHKUM INTERCHANGE	AT & SF RAILROAD	40	4		226.6	9,970	701406 *
038-0004	I-57 NORTHBOUND	8.6 MILES SOUTH OF ASHKUM INTERCHANGE	WEST SECOND STREET	40	4		226.6	9,970	701406 *
038-0005	I-57 SOUTHBOUND	0.78 MILES SOUTH OF CLIFTON INTERCHANGE	US 45 & ICG RAILROAD	40	4		174	7,656	701406 *
038-0006	I-57 NORTHBOUND	7.3 MILES SOUTH OF ONARGA INTERCHANGE	SPRING CREEK	40	4		174	7,656	701406 *
038-0007	I-57 SOUTHBOUND	2.23 MILES SOUTH OF CHEBANSE INTERCHANGE	LANGAN CREEK	40	4		106.7	4,695	701406 *
038-0008	I-57 NORTHBOUND	2.5 MILES SOUTH OF BUCKLEY INTERCHANGE	SPRING CREEK	40	4		106.7	4,695	701406 *
038-0013	I-57 SOUTHBOUND	7.3 MILES SOUTH OF ONARGA INTERCHANGE	SPRING CREEK	40	7.6		373.8	17,793	701406 *
038-0014	I-57 NORTHBOUND	7.3 MILES SOUTH OF ONARGA INTERCHANGE	SPRING CREEK	40	7.6		373.8	17,793	701406 *
038-0151	I-57 SOUTHBOUND	2.23 MILES SOUTH OF CHEBANSE INTERCHANGE	LANGAN CREEK	40	1		216	10,282	701406
038-0152	I-57 NORTHBOUND	2.5 MILES SOUTH OF BUCKLEY INTERCHANGE	SPRING CREEK	40	1		216	10,282	701406
038-0215	I-57 SOUTHBOUND	2.5 MILES SOUTH OF BUCKLEY INTERCHANGE	SPRING CREEK	40	7.6		116	5,522	701406
038-0216	I-57 NORTHBOUND	2.5 MILES SOUTH OF BUCKLEY INTERCHANGE	SPRING CREEK	40	7.6		116	5,522	701406
038-0222	I-57 SOUTHBOUND	2.5 MILES SOUTH OF BUCKLEY INTERCHANGE	SPRING CREEK	40	7.6		116	5,522	701406
038-0223	I-57 NORTHBOUND	2.5 MILES SOUTH OF BUCKLEY INTERCHANGE	SPRING CREEK	40	7.6		116	5,522	701406
NON-INTERSTATE									
038-0019	ILL 1	2.2 MI N OF US 52	N MARTINTON DT NO 2	31.5	7.4		106	4,123	701201
038-0025	ILL 1	S EDGE OF MILFORD	SUGAR CREEK	36	7.4		207.1	8,988	701201
038-0031	US 24	GILMAN INTERCHANGE	I-57	49	7.4	18.5	222	16,628	701201
038-0032	US 24	2.1 MI E OF US 45	DRAINAGE DITCH	40	7.4		107.1	5,077	701201
038-0033	US 24	3.1 MI E OF US 45	DRAINAGE DITCH	40	7.4		186.2	8,826	701201
038-0034	US 24	4.1 MI E OF US 45	SPRING CREEK	40	7.4		207.8	9,850	701201
038-0037	US 24	2.7 MI E OF ILL 1	RAYMOND CREEK	40	7.4		100	4,740	701201
038-0077	FAS 335/CH 10	6.5 MI S BUCKLEY INT	I-57	30.5	5		184	6,532	701201
038-0082	FAS 337/CH 47	2.6 MI S ONARGA INT	I-57	26.5	5		225.3	7,097	701201
038-0086	TR 155	7.8 MI S ASHKUM INT	I-57	26	1.6		238.3	6,577	701201
038-0103	US 52	1.7 MI E OF ILL 49	IROQUOIS RIVER	32	7.4		409.9	16,150	701201
038-0118	ILL 49	2.5 MI N OF US 24	SPRING CREEK	32	7.4		284.5	11,209	701201
038-0123	ILL 116	ASHKUM INTERCHANGE	I 57	32.5	4.8		264.8	9,877	701201 *
038-0125	TR 89	2.5 MI S ASHKUM INT	I 57	26.5	5		220.5	6,946	701201
038-0126	TR 26A	7.1 MI S ONARGA INT	I-57	26.5	5		329.4	10,376	701201
038-0128	TR 49A	1.6 MI S CLIFTON INT	I 57	24	1.6		256.2	6,559	701201
038-0129	TR 58A	1.2 MI S GILMAN INT	I 57	24	5		343.6	9,964	701201
038-0130	TR 95	3.5 MI S OF ILL 116	I 57	26.5	5		263.3	8,294	701201
038-0131	TR 109	5.6 MI S ASHKUM INT	I 57	26.5	5		222.8	7,018	701201
038-0132	TR 269	4.7 MI S ONARGA INT	I-57	26.5	5		181.8	5,727	701201

* STRUCTURE HAS EXISTING PCC OVERLAY.
ADDITIONAL DRYING TIME MAY BE REQUIRED.

CONCRETE SEALER

STRUCTURE NUMBER	FACILITY CARRIED	APPROXIMATE LOCATION	FEATURE CROSSED	DECK WIDTH FEET	PARAPET SURFACE FEET	MEDIAN SURFACE FEET	DECK LENGTH FEET	SEAL AREA SQ FT	TRAFFIC CONTROL AND PROTECTION STANDARD
038-0133	TR 327	1.1 MI S BUCKLEY INT	I-57	26.5	5		180.6	5,689	701201
038-0134	TR 349	4.1 MI S BUCKLEY INT	I-57	26.5	5		242.8	7,648	701201
038-0142	US 52	5.5 MI E OF ILL 49	DRAINAGE DITCH	32	1.6		15.8	531	701201
038-0164	ILL 1	1.2 MI N OF MILFORD	UNKNOWN STREAM	37	1.2		22.5	860	701201 *
038-0174	ILL 49	4.4 MI N ILL 9	PIGEON CREEK	33			93.5	3,086	701201
038-0179	US 24	W EDGE OF WATSEKA	SUGAR CREEK	30	7.4		378.8	14,167	701501
038-0182	US 52	3.3 MI N OF US 24	IROQUOIS RIVER	32	7.4		218	8,589	701501
038-0186	US 24	4.5 MI W OF I-57	PRAIRIE CREEK	40	7.4		101.3	4,802	701201
038-0187	US 24	3.7 MI W OF I-57	TRIB PRAIRIE CREEK	40	7.4		65	3,081	701201
038-0191	ILL 49	3.4 MI S OF US 24	TRIB OF SHAVEYAIL CR	40	7.4		42	1,991	701201
038-0197	ILL 1	2.7 MI S OF US 24	SUGAR CREEK	36	7.4		60	2,604	701201
038-0198	ILL 49	12.6 MI S US 24	LITTLE MUD CREEK	32	7.4		140	5,516	701201
038-0200	ILL 1	31.8 MI N OF CH 10	SUGAR CREEK TRIB	36	7.4		170.25	7,389	701201
038-0201	ILL 1	0.7 MI N OF CH 10	SUGAR CREEK TRIB	36	7.4		108.8	4,722	701201
038-0206	ILL 1	0.8 MI N PAPINEAU RD	BIG BEAVER CREEK	31.5	7.4		129.6	5,041	701201
038-0207	ILL 54	7.6 MI N OF ILL 115	SPRING CREEK	31.5	7.4		131.9	5,131	701201
038-0210	US 45	0.3 MI S DEL REY RD	SPRING CREEK	32	7.4		99.7	3,928	701201
038-0211	US 45	0.4 MI S OF US 24	DRAINAGE DITCH	36	7.4		89	3,863	701201
038-0212	US 45	1.7 MI N OF BUCKLEY	LOUIS CREEK	32	7.6		102	4,039	701201
038-0213	ILL 54	1.1 MI N OF THAWVILLE	SPRING CREEK	32	7.6		91	3,604	701201
038-0214	US 45/FAS 338	10.6 MI S OF ILL 54	SPRING CREEK	32	7.6		95	3,762	701201
038-0217	ILL 49	16.1 MI S OF US 24	PIDGEON CREEK	32	7.6		138	5,465	701201
038-0220	ILL 116	3.81 MI W OF I-57	BR OF LANGAN CRK	32	7.6		76	3,010	701201
038-0221	US 45	2.3 MI E OF ASHKUM	PRAIRIE CREEK	32	7.6		92	3,643	701201
IROQUOIS COUNTY SUB-TOTAL								409,664	

KANKAKEE COUNTY INTERSTATE

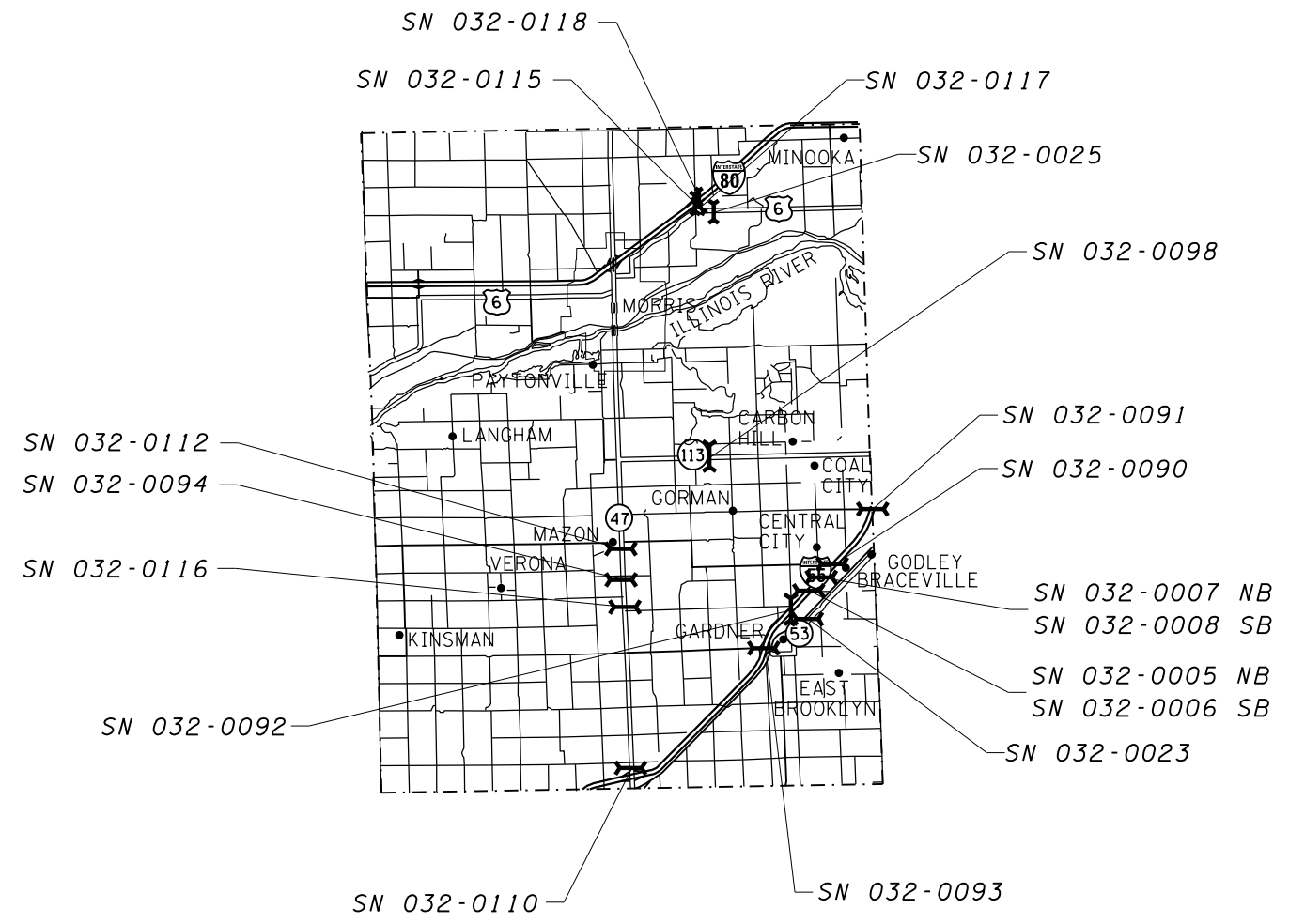
046-0010	I-57 NORTHBOUND	1.0 MILE NORTH OF ILL 17	GRINNELL ROAD	40	7.4		120.2	5,697	701406
046-0011	I-57 SOUTHBOUND		FAU 6221	40	7.4		120.2	5,697	701406
046-0013	I-57 NORTHBOUND	1.8 MI N OF ILL 17	SOLDIER CREEK	40	7.4		76.6	3,631	701406
046-0114	I-57 SOUTHBOUND	4.3 MI N CHEBANSE INT	MINNIE CREEK	40	7.4		69.2	3,280	701406
046-0144	I-57 SOUTHBOUND	I-57 & IL 50 INTERCHANGE	IL 50	61	8.8		230.7	16,103	701406/701411
046-0145	I-57 NORTHBOUND			61.7	8.8		230	16,215	701406/701411
046-0146	I-57 SOUTHBOUND	0.3 MILES NW OF IL 50	ICG RAILROAD	82	8.8		170	15,436	701406/701411
046-0147	I-57 NORTHBOUND			72.5	8.8		169.7	13,797	701406/701411

* STRUCTURE HAS EXISTING PCC OVERLAY. ADDITIONAL DRYING TIME MAY BE REQUIRED.

CONCRETE SEALER

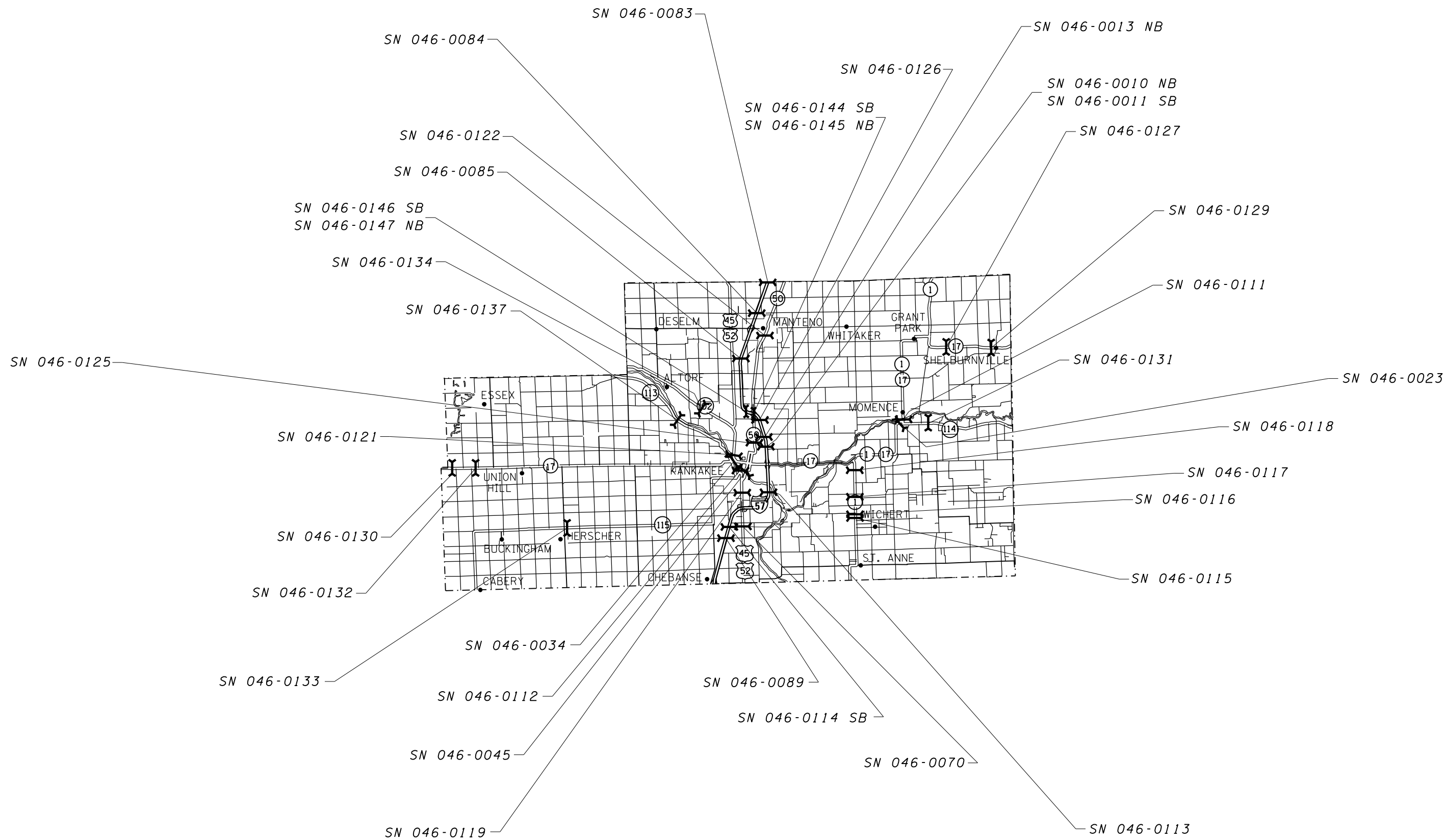
STRUCTURE NUMBER	FACILITY CARRIED	APPROXIMATE LOCATION	FEATURE CROSSED	DECK WIDTH FEET	PARAPET SURFACE FEET	MEDIAN SURFACE FEET	DECK LENGTH FEET	SEAL AREA SQ FT	TRAFFIC CONTROL AND PROTECTION STANDARD
NON-INTERSTATE									
046-0023	ILL 1 & 17	MOMENCE	KKK RIVER S BRANCH	52	1		288.3	15,280	701201
046-0034	ILL 17	100 FT W US OF 45 & 52	KKK RIVER & PK RD	88.3	6	6.9	631.9	63,948	701201
046-0045	ILL 50	1 MI N JT US 45 & 52	KANKAKEE RIVER	61.2	6.2		595.4	39,763	701201
046-0070	US 52 & 45	1.2 MI S OF I-57	MINNIE CREEK	40			103.8	4,152	701201 *
046-0083	STEGER RD	3.2 MI N MANTENO INT	I-57	24	1.8		243.5	6,282	701201
046-0084	LAKE MANTENO RD	1.1 MI N MANTENO RD	I-57	24	1.8		243.5	6,282	701201
046-0085	7000N RD/MS 1025	4.2 MI N ILL 50	I-57	24	1.8		241.1	6,220	701201
046-0089	FAU 6223/OTTO RD	3.4 MI N CHEBANSE INT	I-57 & I C G RR	26.5	6.6		432.8	14,326	701201
046-0111	ILL 1 & 17	MOMENCE	KANKAKEE RIVER	52	1		241	12,773	701501
046-0112	ILL 115,US 45 & 52	0.6 MI S OF ILL 17	KANKAKEE RIVER	46	7.4		561	29,957	701606
046-0113	FAU 6189/RIVER RD	2.3 MI N OF US 45 & 52	I-57	28	7.4		218	7,717	701201
046-0115	ILL 1	4.4 MI S OF ILL 17	DITCH	36	7.4		34	1,476	701201
046-0116	ILL 1	4.0 MI S OF ILL 17	DITCH	36	7.4		39	1,693	701201
046-0117	ILL 1	2.6 MI S OF ILL 17	SPRING CREEK	36	7.4		80	3,472	701201
046-0118	ILL 1	0.8 MI S OF ILL 17	DITCH	36	7.4		43	1,866	701201
046-0119	US 45 & 52	1.0 MI N OF I-57	GARR CREEK	63	7.4		88	6,195	701606
046-0121	US 45 & 52	50 FT N COURT ST IN KKK	SOLDIERS CREEK	91.5	1.6	0.5	107.3	10,194	701601
046-0122	ILL 50	S EDGE OF MANTENO	S BR ROCK CREEK	51.2	1.6		131.2	6,927	701606
046-0125	ILL 50	N LIMITS KANKAKEE	SOLDIER CREEK	65.6	1.6		90	6,048	701602
046-0126	ARMOUR RD/FAU 6176	3.2 MI N OF ILL 17	I-57	53.8	6.2		216.4	12,984	702606
046-0127	ILL 17/FAS 310	2.1 MI SE OF JCT ILL 1 & 17	PIKE CREEK	36	7.4		94	4,080	701201
046-0129	ILL 17	5.0 MI SE OF JCT ILL 1 & 17	BULL CREEK	36	7.4		86.5	3,754	701201
046-0130	ILL 17	1.5 MI E OF REDDICK	MAZON RIVER	32	7.4		90.2	3,554	701201
046-0131	ILL 114	1.7 MI E OF ILL 1 & 17	PIKE CREEK	40	7.4		64	3,034	701201
046-0132	ILL 17	2.0 MI E OF REDDICK	CRANE CREEK	36	7.4		130	5,642	701201
046-0133	ILL 115	15.1 MI W OF US 45	HORSE CREEK	35.4	7.4		98.4	4,212	701501
046-0134	ILL 102	2.2 MI NW OF US 45	DAVIS CREEK	40	1		41.3	1,693	701201 *
046-0137	ILL 113	4.7 MI N OF ILL 17	WILEY CREEK	32	7.6		91.5	3,623	701201
KANKAKEE COUNTY SUB-TOTAL								367,004	
TOTAL								1,008,796	

* STRUCTURE HAS EXISTING PCC OVERLAY.
ADDITIONAL DRYING TIME MAY BE REQUIRED.



GRUNDY COUNTY

FILE NAME = USER NAME = duncanbd DESIGNED - REVISIONS: REVISIONS: REVISIONS: REVISIONS: REVISIONS: PLOT SCALE = 100.0000' / in. CHECKED - DATE - PLOT DATE = 8/19/2015				STATE OF ILLINOIS DEPARTMENT OF TRANSPORTATION		GRUNDY COUNTY LOCATION MAP				F.A. RTE. VAR		SECTION •		COUNTY VARIOUS		TOTAL SHEETS 12		SHEET NO. 9	
SCALE: NTS						SHEET 2 OF 4 SHEETS		STA. TO STA.		*D3 BRIDGE DECK SEALING FY 2016 ILLINOIS FED. AID PROJECT									
										CONTRACT NO. 66E86									

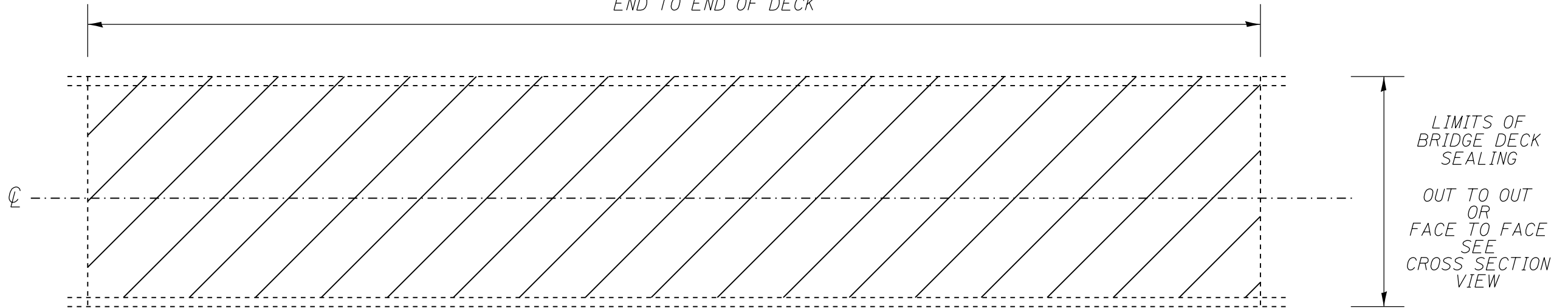


KANKAKEE COUNTY

FILE NAME =		USER NAME = duncanbd		DESIGNED -		REVISED -		STATE OF ILLINOIS DEPARTMENT OF TRANSPORTATION		KANKAKEE LOCATION MAP				F.A. RTE.		SECTION	COUNTY	TOTAL SHEETS	SHEET NO.
pw:\IL\084EBIDINTEG\Illinois.gov\PWIDOT\Documents\DOT Offices\District 3\Projects\0366EBR\BROWND\B366E86-shr-pln.dgn		PLOT SCALE = 100.0000' / in.		CHECKED -		REVISED -								VAR	.	VARIOUS	12	11	
Default		PLOT DATE = 8/19/2015		DATE -		REVISED -								CONTRACT NO. 66E86				ILLINOIS FED. AID PROJECT	
														SCALE: NTS		SHEET 4	OF 4	SHEETS	STA.

*D3 BRIDGE DECK SEALING FY 2016

LIMITS OF BRIDGE DECK SEALING
END TO END OF DECK

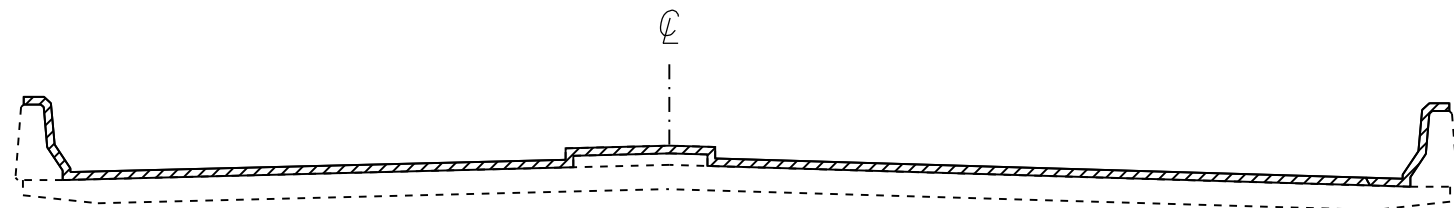


PLAN VIEW

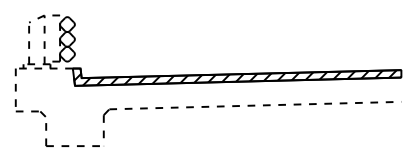
NOTE: BRIDGE APPROACH PAVEMENT SHALL NOT BE SEALED.

EXISTING PAVEMENT MARKINGS SHALL BE TEMPORARILY COVERED PRIOR TO APPLICATION OF THE DECK SURFACE TREATMENT, TO PREVENT THE MATERIAL FROM BEING APPLIED TO THE MARKINGS AND TO PROTECT THE REFLECTIVE PROPERTIES OF THE MARKINGS. THE TEMPORARY COVERING MATERIAL USED SHALL BE SUCH THAT IT WILL NOT AFFECT THE MARKING'S REFLECTIVITY WHEN REMOVED AFTER APPLICATION OF THE DECK SURFACE TREATMENT AND PRIOR TO OPENING TO TRAFFIC. COST INCLUDED WITH CONCRETE SEALER.

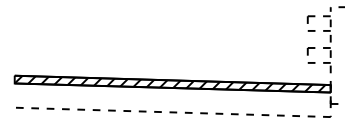
EXISTING EXPANSION JOINTS SHALL BE TEMPORARILY COVERED, PRIOR TO APPLICATION OF THE DECK SURFACE TREATMENT, TO PREVENT THE MATERIAL FROM BEING APPLIED TO THE JOINTS. THE TEMPORARY COVERING SHALL BE REMOVED AFTER THE APPLICATION OF THE DECK SURFACE TREATMENT AND PRIOR TO OPENING TO TRAFFIC. COST IS INCLUDED WITH CONCRETE SEALER.



SECTION WITH
PARAPET AND MEDIAN



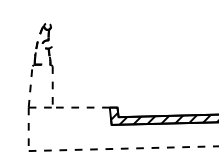
SECTION WITH CURB AND
TUBULAR THRIE BEAM RETROFIT RAIL



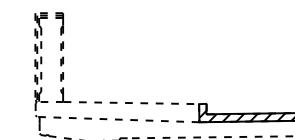
SECTION WITH
BRIDGE RAIL



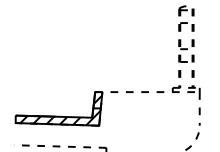
SECTION WITH CONCRETE
AND ALUMINUM RAILING



CONCRETE AND
ALUMINUM RAILING




CONCRETE
BRIDGE RAILING



BRIDGE RAIL

VARIOUS SECTIONS WITH SIDEWALK AND/OR CONCRETE CURB

 AREA TO BE SEALED

NOT TO SCALE

FILE NAME =	USER NAME = duncanbd	DESIGNED -	REVISED -
p:\11\084EBIDINTEG.illinois.gov\PI\DOT\Documents\IDOT Offices\District 3\Projects\0366EBR\B366EBR\B366EBR-shd-details.dgn		CHECKED -	REVISED -
Default	PLOT DATE = 8/19/2015	DATE -	REVISED -

STATE OF ILLINOIS
DEPARTMENT OF TRANSPORTATION

BRIDGE AND PARAPET
SEALING DETAILS

SCALE: SHEET OF SHEETS STA. TO STA.

F.A. RTE.		SECTION	COUNTY	TOTAL SHEETS	SHEET NO.
VAR		•	VARIOUS	12	12
				CONTRACT NO. 66E86	
ILLINOIS FED. AID PROJECT					

•D3 BRIDGE DECK SEALING FY 2016