

11-06-2015 LETTING 029

STATE OF ILLINOIS
DEPARTMENT OF TRANSPORTATION
DIVISION OF HIGHWAYS

**PROPOSED
HIGHWAY PLANS**

VARIOUS ROUTES
SECTION BRIDGE PAINTING 2016-1

BRIDGE PAINTING
MCLEAN COUNTY

C-95-032-15

| | | | | |
|-----------|------------------------|----------|--------------------|-----------|
| F.A. RTE. | SECTION | COUNTY | TOTAL SHEETS | SHEET NO. |
| VAR. | BRIDGE PAINTING 2016-1 | MCLEAN | 20 | 1 |
| | | ILLINOIS | CONTRACT NO. 70B32 | |

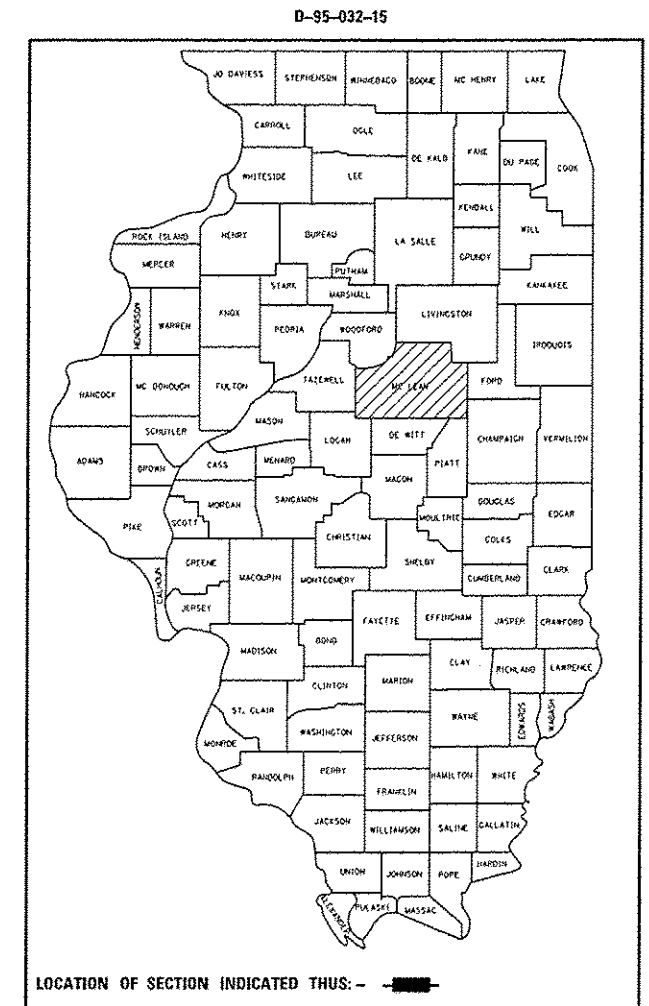
FOR INDEX OF SHEETS, SEE SHEET NO. 2
FOR SUMMARY OF QUANTITIES, SEE SHEETS 6-7

CURRENT ADT

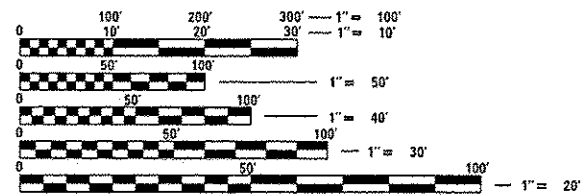
| | LOC. #1 | LOC. #2 | LOC. #3 |
|------------|---------|---------|---------|
| ADT (2013) | 25,500 | 20,500 | 4,200 |

TRAFFIC DATA LOCATIONS

- LOC. #1 = S.N. 057-0194 - FAP 730 OVER A PEDESTRIAN WALKWAY IN NORMAL.
- LOC. #2 = S.N. 057-0116 - TR 210 (MORRIS AVE.) OVER I-74 S. OF BLOOMINGTON .
- LOC. #3 = S.N. 057-0202 - FAP 676 (US 150) OVER N&W RR /WHITE OAK RD.



FOR LOCATION MAPS, SEE SHEETS 3-5



FULL SIZE PLANS HAVE BEEN PREPARED USING STANDARD ENGINEERING SCALES. REDUCED SIZED PLANS WILL NOT CONFORM TO STANDARD SCALES. IN MAKING MEASUREMENTS ON REDUCED PLANS, THE ABOVE SCALES MAY BE USED.

J.U.L.I.E.
JOINT UTILITY LOCATION INFORMATION FOR EXCAVATION
1-800-892-0123
OR 811

PROJECT ENGINEER: NANCY FASIG
SQUAD LEADER: STEVE COOMBES
(217) 465-4181

CONTRACT NO. 70B32

STATE OF ILLINOIS
DEPARTMENT OF TRANSPORTATION
DIVISION OF HIGHWAYS

SUBMITTED August 4 20 15

[Signature]
DEPUTY DIRECTOR OF HIGHWAYS, REGION ENGINEER

Oct 2 20 15
[Signature]
ENGINEER OF DESIGN AND ENVIRONMENT

Oct 2 20 15
[Signature]
DIRECTOR OF HIGHWAYS, CHIEF ENGINEER

**PRINTED BY THE AUTHORITY
OF THE STATE OF ILLINOIS**

INDEX OF SHEETS

| SHEET NO. | DESCRIPTION |
|-----------|---|
| 1 | COVER SHEET |
| 2 | INDEX OF SHEETS, HIGHWAY STANDARDS, & GENERAL NOTES |
| 3-5 | DESCRIPTIONS & MAPS FOR LOCATIONS 1-3 |
| 6 | SUMMARY OF QUANTITIES |
| 7-11 | LOCATION #1 STRUCTURE DETAILS |
| 12-14 | LOCATION #2 STRUCTURE DETAILS |
| 15-19 | LOCATION #3 STRUCTURE DETAILS |

HIGHWAY STANDARDS

| STANDARD NO. | DESCRIPTION |
|--------------|--|
| 000001-06 | STANDARD SYMBOLS, ABBREVIATIONS AND PATTERNS |
| 701101-04 | OFF-ROAD OPERATIONS, MULTILANE, 15' (4.5 m) TO 24" (600 mm) FROM PAVEMENT EDGE |
| 701106-02 | OFF-ROAD OPERATIONS, MULTILANE, MORE THAN 15' (4.5 m) AWAY |
| 701201-04 | LANE CLOSURE, 2L, 2W, DAY ONLY, FOR SPEEDS \geq 45 MPH |
| 701400-08 | APPROACH TO LANE CLOSURE, FREEWAY/EXPRESSWAY |
| 701401-09 | LANE CLOSURE, FREEWAY/EXPRESSWAY |
| 701402-10 | LANE CLOSURE, FREEWAY/EXPRESSWAY, WITH BARRIER |
| 701406-09 | LANE CLOSURE, FREEWAY/EXPRESSWAY, DAY OPERATIONS ONLY |
| 701411-09 | LANE CLOSURE, MULTILANE, AT ENTRANCE OR EXIT RAMP, FOR SPEEDS \geq 45 MPH |
| 701901-04 | TRAFFIC CONTROL DEVICES |
| 701006-05 | OFF-RD OPERATIONS, 2L, 2W, 15' (4.5 m) TO 24" (600 mm) FROM PAVEMENT EDGE |

GENERAL NOTES

G.N.-100
ENGLISH UNITS OF MEASURE SHALL GOVERN OVER AND SUPERSEDE ANY METRIC UNITS SHOWN IN THIS CONTRACT. WHERE INCLUDED, METRIC UNITS ARE FOR INFORMATION ONLY.

G.N.-100A
ELECTRONIC FILES AND/OR ELECTRONIC SURVEY INFORMATION INCLUDING CADD FILES WILL NOT BE AVAILABLE TO THE CONTRACTOR.

G.N.-107.12 (SPL.)
THE NAME, ADDRESS AND TELEPHONE NUMBER OF THE LOCAL RAILROAD CONTACT IS:

Ms. Carrie Reynolds
Illinois Division Office Manager
Norfolk Southern Railway Company
1735 East Condit Street
Decatur, IL 62521
(217) 425-2078

SPECIAL ATTENTION IS CALLED TO ARTICLE 107.12 REGARDING RAILROAD FLAGGERS.
THE NAME, ADDRESS AND TELEPHONE NUMBER OF THE RAILROAD FLAGGER CONTACT IS:

Ms. Carrie Reynolds
Illinois Division Office Manager
Norfolk Southern Railway Company
1735 East Condit Street
Decatur, IL 62521
(217) 425-2078

SOME RAILROADS REQUIRE CONTRACTORS TO OBTAIN A RIGHT OF ENTRY PERMIT BEFORE ENTERING UPON RAILROAD RIGHT OF WAY. IT IS THE RESPONSIBILITY OF THE CONTRACTOR TO OBTAIN A RAILROAD RIGHT OF ENTRY PERMIT FROM THE RAILROAD IF REQUIRED BY THE RAILROAD(S).

ALL WORK ON, OVER, UNDER, OR ADJACENT TO NORFOLK SOUTHERN (NS) RIGHT-OF-WAY SHALL BE DONE IN ACCORDANCE WITH THE NORFOLK SOUTHERN "SPECIAL PROVISIONS FOR THE PROTECTION OF RAILWAY INTERESTS" (NS SPECIAL PROVISIONS).

G.N.-501A
THE EXISTING STRUCTURAL STEEL COATING CONTAINS LEAD. THE CONTRACTOR SHALL FOLLOW THE GUIDE BRIDGE SPECIAL PROVISIONS FOR CONTAINMENT AND DISPOSAL OF LEAD PAINT CLEANING RESIDUES TO DEAL WITH THE PRESENCE OF LEAD ON THIS PROJECT.

ONLY STRUCTURAL STEEL AND OTHER DESIGNATED SURFACES SHALL BE PAINTED. ALL OTHER SURFACES, INCLUDING THE ELASTOMERIC COATED WALL WITH ISU SCHOOL COLORS, SHALL BE PROTECTED FROM CONTRACTORS BLASTING AND PAINTING OPERATIONS. ANY AREAS DAMAGED BY BLASTING OR OVERSPRAY WILL BE REMOVED OR REPAIRED AT THE CONTRACTOR'S EXPENSE AND NO ADDITIONAL COMPENSATION WILL BE ALLOWED.

THE SSPC-QP1 AND QP2 PAINTING CONTRACTOR CERTIFICATIONS WILL BE REQUIRED FOR THIS CONTRACT.

ALL TRASH AND PAINTING DEBRIS, EXCLUDING WASTE BARRELS OR ROLL-OFF DUMPSTERS, SHALL BE REMOVED BEFORE BEGINNING WORK AT ANOTHER LOCATION.

| | | | | | | | | | | |
|---|--|--|-------------------|---|--|-----------|------------------------|--------------------|---------------------------|-----------|
| FILE NAME : p:\11\084EBID\INT\EG-illinois.gov\FWIDOT\08 | USER NAME : coombsf | DESIGNED : DRAWN:Data\Design\0570832-ht-plen.dgn | REVISED : REVISED | STATE OF ILLINOIS DEPARTMENT OF TRANSPORTATION | INDEX OF SHEETS, HIGHWAY STANDARDS, & GENERAL NOTES | F.A. RTE. | SECTION | COUNT | TOTAL SHEETS | SHEET NO. |
| p:\11\084EBID\INT\EG-illinois.gov\FWIDOT\08 | Data\DOT Offices\District 5\Projects\0570832-ht-plen.dgn | CHECKED : DATE | REVISED : REVISED | SCALE: | SHEET NO. OF SHEETS STA. TO STA. | VAR. | BRIDGE PAINTING 2016-1 | MCLEAN | 20 | 2 |
| PLOT SCALE : 40,000' / 1" IN. | PLOT DATE : 8/27/2015 | DATE | REVISED | | | | | CONTRACT NO. 70B32 | ILLINOIS FED. AID PROJECT | |

**LOCATION #2
DESCRIPTION**

DESCRIPTION: FAI 74 @ M.P. 134.4
TR 210 (MORRIS AVE.)
COUNTY: MCLEAN
ROUTE: FAI-74 @ TR 210
MARKED ROUTE: FAI-74
SECTION: BRIDGE PAINTING 2016-1
STRUCTURE NO.: 057-0116
TYPE OF STRUC.: 4 SPAN STEEL CONTINUOUS I-BEAM 5 BEAM LINES

CLEANING AND PAINTING OF THE EXISTING STRUCTURAL STEEL SHALL BE AS SPECIFIED IN THE SPECIAL PROVISIONS FOR "CLEANING AND PAINTING EXISTING STEEL STRUCTURES." ALL BEAMS, BEARINGS AND OTHER STRUCTURAL STEEL SHALL BE CLEANED PER NEAR WHITE BLASTING SSPC-SP10.

THE DESIGNATED AREAS CLEANED PER NEAR WHITE BLAST CLEANING SSPC-SP10 SHALL BE PAINTED ACCORDING TO THE REQUIREMENTS OF PAINT SYSTEM 1 OZ/E/U. THE COLOR OF THE FINAL FINISH COAT FOR ALL INTERIOR STEEL SURFACES SHALL BE GRAY, MUNSELL NO. 5B 7/1. THE COLOR OF THE FINAL FINISH COAT FOR ALL EXTERIOR AND BOTTOM FLANGE OF THE FASCIA BEAMS SHALL BE REDDISH BROWN, MUNSELL COLOR STANDARD 2.5 YR 3/4.

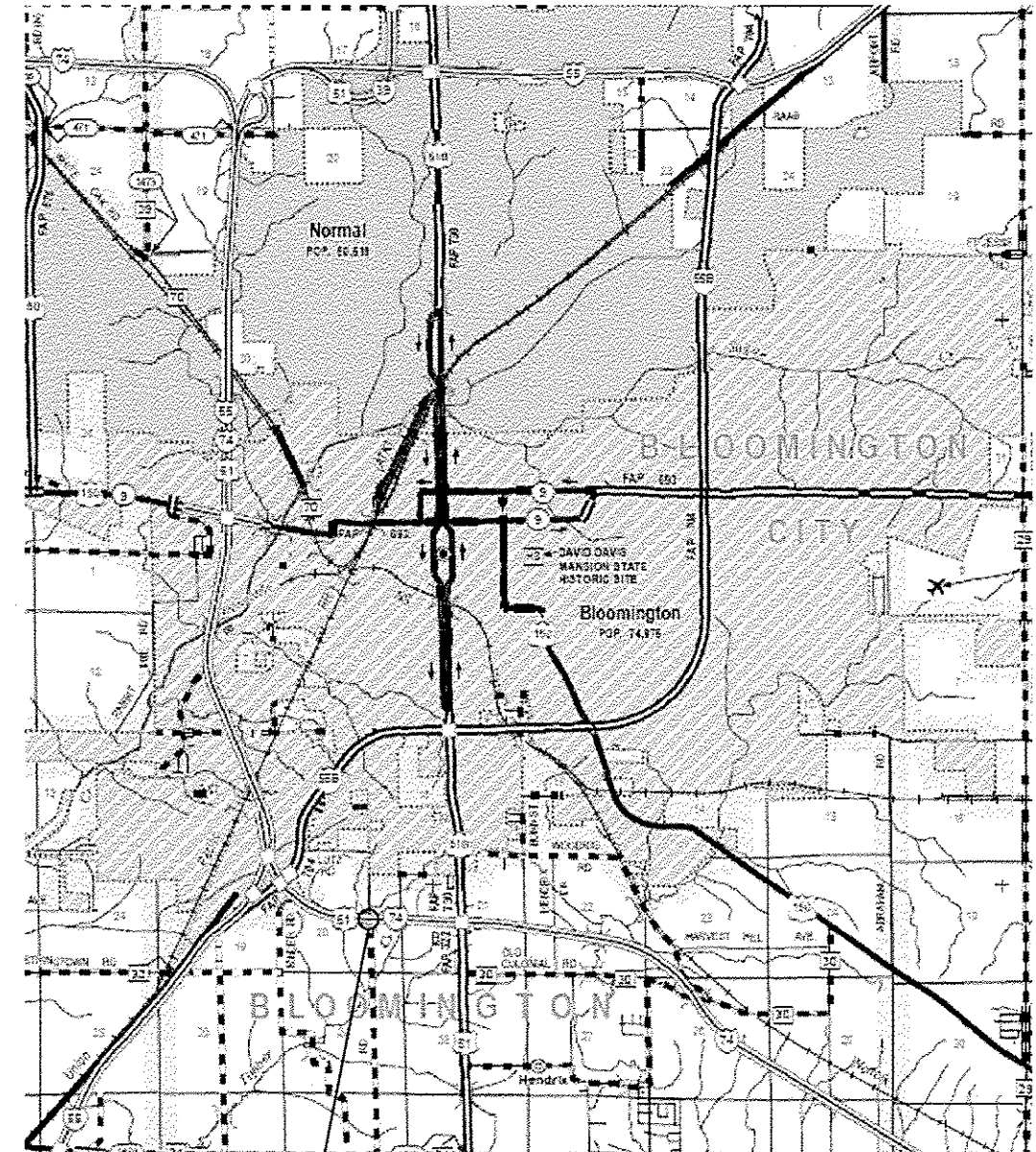
TWO (2) YEAR PAINT WARRANTY REQUIRED FOR THIS STRUCTURE

A MINIMUM OF TWO (2) HIGH VOLUME AIR MONITORS WILL BE REQUIRED TO MONITOR AIR QUALITY DURING DUST PRODUCING OPERATIONS AT THIS SITE. SEE SPECIAL PROVISIONS FOR CONTAINMENT AND DISPOSAL OF LEAD PAINT CLEANING RESIDUES.

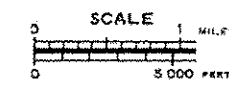
THE EXISTING STRUCTURAL STEEL COATING CONTAINS LEAD. THE CONTRACTOR SHALL FOLLOW THE GUIDE BRIDGE SPECIAL PROVISIONS FOR CONTAINMENT AND DISPOSAL OF LEAD PAINT CLEANING RESIDUES TO DEAL WITH THE PRESENCE OF LEAD ON THIS PROJECT.

DECK DRAINS TO BE PAINTED AT NO ADDITIONAL COST.

**LOCATION MAP #2
MCLEAN COUNTY**



LOCATION 2
S.N. 057-0116



| | | | | | | | | | | |
|--|---|------------|-----------|---|---|---------------------------|------------------------|--------|--------------|-----------|
| FILE NAME = | USER NAME = coonbasef | DESIGNED - | REVISED - | STATE OF ILLINOIS DEPARTMENT OF TRANSPORTATION | LOCATION #2 DESCRIPTION AND LOCATION MAP | F.A. RTE. | SECTION | COUNTY | TOTAL SHEETS | SHEET NO. |
| aw\11L884EB\INTEG.illinois.gov\PI\DOT\Documents\DOT Offices\District 5\Projects\057-0116\Drawings\Design\0570932-eh-1-plan.dgn | DRAMA\057-0116\Design\0570932-eh-1-plan.dgn | REVISIONS | REVISIONS | | | VAR. | BRIDGE PAINTING 2016-1 | MCLEAN | 20 | 4 |
| PLOT SCALE = 40.2020 / / in. | CHECKED - | REVISIONS | REVISIONS | | | CONTRACT NO. 70832 | | | | |
| PLOT DATE = 6/3/2015 | DATE - | REVISIONS | REVISIONS | | | ILLINOIS FED. AID PROJECT | | | | |
| | | | | SCALE: SHEET NO. OF SHEETS STA. TO STA. | | | | | | |

SUMMARY OF QUANTITIES

LOCATION OF WORK:

| | | |
|--|---|--|
| LOC. #1 F.A.P. 730 S.N. 057-0194 MCLEAN CO. URBAN 100 % STATE 0014 | LOC. #2 F.A.I. 74 S.N. 057-0116 MCLEAN CO. URBAN 100 % STATE 0014 | LOC. #3 F.A.P. 676 S.N. 057-0202 MCLEAN CO. URBAN 100 % STATE 0014 |
|--|---|--|

CONSTRUCTION TYPE CODE:

| CODE NO. | DESCRIPTION | UNIT | TOTAL QUANTITY | QUANTITY | QUANTITY | QUANTITY |
|----------|--|-------|-------------------|----------|----------|----------|
| 67100100 | MOBILIZATION | L SUM | 1.0 | 0.3 | 0.3 | 0.4 |
| 70100207 | TRAFFIC CONTROL AND PROTECTION, STANDARD 701402 | EACH | 4.0 | | 4.0 | |
| 70100420 | TRAFFIC CONTROL AND PROTECTION, STANDARD 701411 | EACH | 1.0 | | 1.0 | |
| 70100450 | TRAFFIC CONTROL AND PROTECTION, STANDARD 701201 | L SUM | 1.0 | | | 1.0 |
| 70400100 | TEMPORARY CONCRETE BARRIER | FOOT | 550.0 | | 550.0 | |
| 70400200 | RELOCATE TEMPORARY CONCRETE BARRIER | FOOT | 550.0 | | 550.0 | |
| X5060603 | CONTAINMENT AND DISPOSAL OF NON-LEAD PAINT CLEANING RESIDUES NO. 3 | L SUM | 1.0 | | | 1.0 |
| X5067501 | BRIDGE CLEANING AND PAINTING WARRANTY NUMBER 1 | L SUM | 1.0 | 1.0 | | |
| X5067502 | BRIDGE CLEANING AND PAINTING WARRANTY NUMBER 2 | L SUM | 1.0 | | 1.0 | |

| | | | | | | | | | | |
|--|----------------------|------------|-----------|---|------------------------------|----------------------------------|------------------------|--|-----------------|--------------|
| FILE NAME = | USER NAME = 00000000 | DESIGNED - | REVISED - | STATE OF ILLINOIS DEPARTMENT OF TRANSPORTATION | SUMMARY OF QUANTITIES | F.A. RTE. | SECTION | COUNTY | TOTAL SHEETS | SHEET NO. |
| pu\11084681\INTRG\Illinois.gov\PIDOT\Documents\DOT Offices\District 5\Projects\0879\DRANN\0879\Design\0879\0832-shr-plan.dgn | | CHECKED - | REVISED - | | | VAR. | BRIDGE PAINTING 2016-1 | MCLEAN | 20 | 6 |
| PLOT SCALE = 40.0000 1 / in. | | DATE - | REVISED - | | SCALE: | SHEET NO. OF SHEETS STA. TO STA. | | ILLINOIS FED. AID PROJECT CONTRACT NO. 70832 | | |
| PLOT DATE = 07/12/2015 | | | | | | | | | | |

SUMMARY OF QUANTITIES

LOCATION OF WORK:

| | | |
|---------------|---------------|---------------|
| LOCATION #1 | LOCATION #2 | LOCATION #3 |
| F.A.P. 730 | F.A.I. 74 | F.A.P. 676 |
| S.N. 057-0194 | S.N. 057-0116 | S.N. 057-0202 |
| MCLEAN CO. | MCLEAN CO. | MCLEAN CO. |
| URBAN | URBAN | URBAN |
| 100 % STATE | 100 % STATE | 100 % STATE |
| 0014 | 0014 | 0014 |

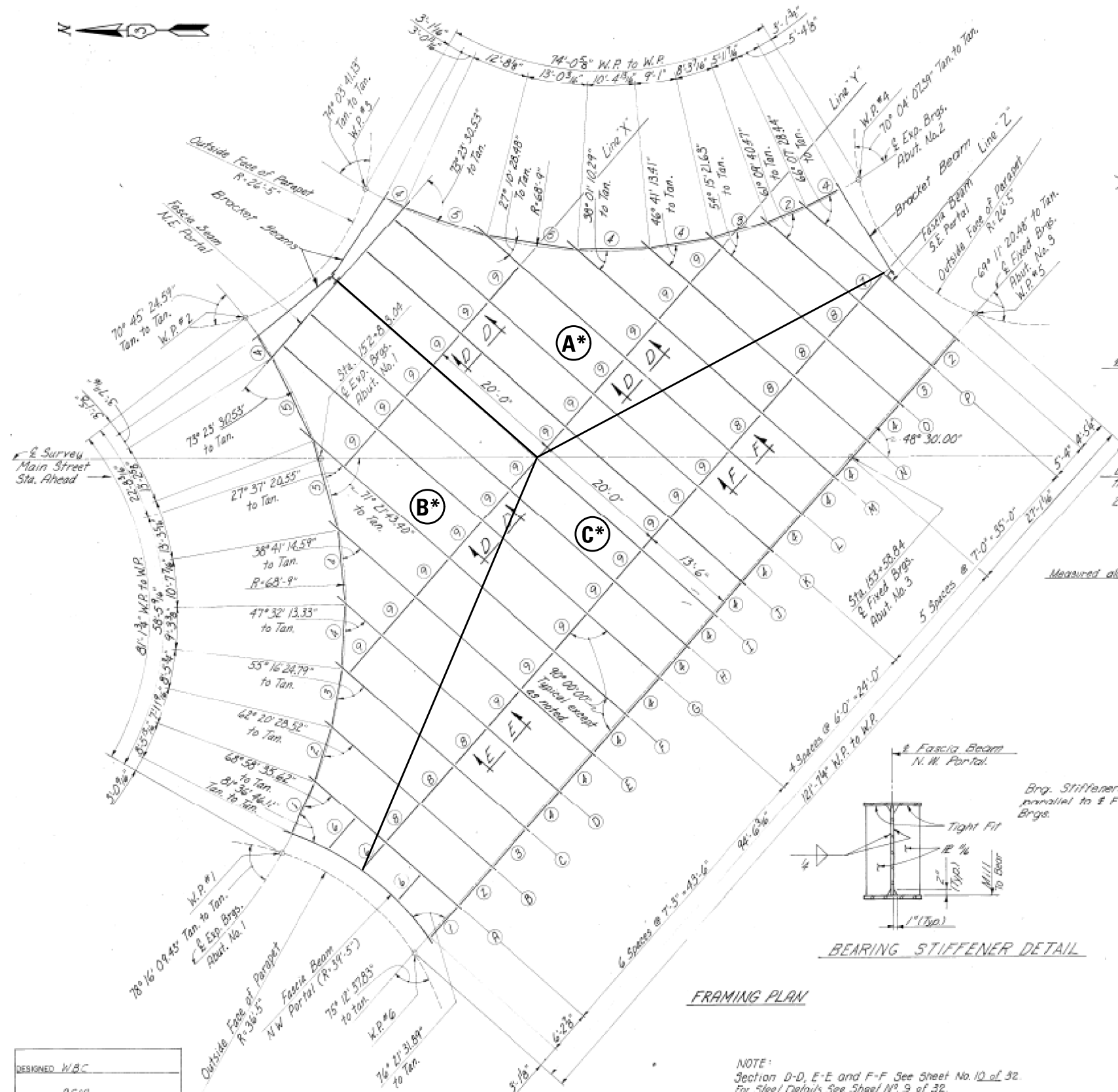
CONSTRUCTION TYPE CODE:

| CODE NO. | DESCRIPTION | UNIT | TOTAL QUANTITY | QUANTITY | QUANTITY | QUANTITY |
|----------|--|--------|-------------------|----------|----------|----------|
| X5067503 | BRIDGE CLEANING AND PAINTING WARRANTY NUMBER 3 | L SUM | 1.0 | | | 1.0 |
| X7010236 | TRAFFIC CONTROL AND PROTECTION, STANDARD 701801, SPECIAL | L SUM | 1.0 | 1.0 | | |
| X7010410 | SPEED DISPLAY TRAILER | CAL MO | 3.0 | | 3.0 | |
| X7015005 | CHANGEABLE MESSAGE SIGN | CAL DA | 14.0 | | 14.0 | |
| Z0007101 | CONTAINMENT AND DISPOSAL OF LEAD PAINT CLEANING RESIDUES NO. 1 | L SUM | 1.0 | 1.0 | | |
| Z0007102 | CONTAINMENT AND DISPOSAL OF LEAD PAINT CLEANING RESIDUES NO. 2 | L SUM | 1.0 | | 1.0 | |
| Z0010501 | CLEANING AND PAINTING STEEL BRIDGE NO.1 | L SUM | 1.0 | 1.0 | | |
| Z0010502 | CLEANING AND PAINTING STEEL BRIDGE NO.2 | L SUM | 1.0 | | 1.0 | |
| Z0010503 | CLEANING AND PAINTING STEEL BRIDGE NO.3 | L SUM | 1.0 | | | 1.0 |
| Z0048665 | RAILROAD PROTECTIVE LIABILITY INSURANCE | L SUM | 1.0 | | | 1.0 |

| | | | | | | | | | | |
|---|--|------------|-----------|---|------------------------------|----------------------------------|------------------------|-----------------------------|--------------|-----------|
| FILE NAME : | USER NAME : rcoombesf | DESIGNED : | REVISED : | STATE OF ILLINOIS DEPARTMENT OF TRANSPORTATION | SUMMARY OF QUANTITIES | F.A. RTE. | SECTION | COUNTY | TOTAL SHEETS | SHEET NO. |
| pw\N\LB4EQ\INTEG\Illinois.gov\PI\001\Documents\1001 Offices\District 5\Projects\057\DRAWN\Drawings\0570032-ahp-plan.dgn | Documents\1001 Offices\District 5\Projects\057\DRAWN\Drawings\0570032-ahp-plan.dgn | CHECKED : | REVISED : | | | VAR. | BRIDGE PAINTING 2016-1 | MCLEAN | 20 | 7 |
| PLOT SCALE : 40.0000 / 1 in. | | DATE : | REVISED : | | SCALE: | SHEET NO. OF SHEETS STA. TO STA. | | [ILLINDIS] FED. AID PROJECT | | |
| PLOT DATE : 8/12/2015 | | | | | | | | CONTRACT NO. 70B32 | | |

FOR INFORMATION ONLY
S.N. 057-0194

***AREAS A,B,&C SHOWN ON THE FRAMING PLAN REPRESENT A POSSIBLE STAGING SCENARIO FOR THE WORK AT LOCATION #1 (S.N. 057-0194).**

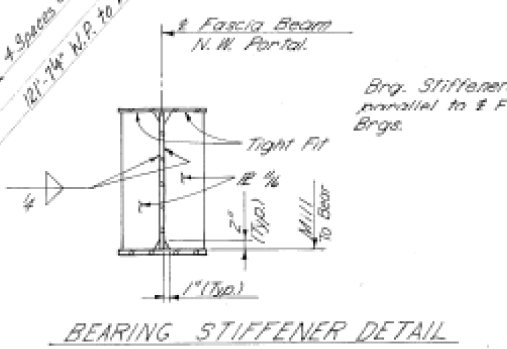


| Beam | *Beam Size | a | b | Length L | *Cover R | Shear Connectors | | | Total No. Studs |
|----------|------------|-------------|----------|----------|---------------------------|------------------------------|------------------------------|-------------------------------|-----------------|
| | | | | | | e | f | g | |
| A | W24 x 76 | 26'-9 1/2" | 7 1/8" | 27'-11" | | 2 spa @ 6'-1'-0" | 16 spa @ 6 1/2" x 8'-8" | 10 spa @ 9'-1"-7'-5 1/2" | 141 |
| B | W24 x 94 | 30'-1 1/4" | 7 1/4" | 31'-2" | | 1 spa @ 6'-6" | 22 spa @ 6 1/2" x 11'-11" | 7 spa @ 9'-1"-5'-3 1/4" | 162 |
| C | W27 x 102 | 34'-5 5/8" | 6 9/16" | 35'-6" | | 24 spa @ 6'-12'-0" | | 14 spa @ 9'-1"-10'-3 3/4" | 189 |
| D | W30 x 124 | 40'-3 3/8" | 7 1/8" | 40'-11" | | 2 spa @ 6'-1'-0" | 18 spa @ 7'-10'-6" | 23 spa @ 9'-1"-17'-3 3/4" | 192 |
| E | W30 x 124 | 48'-0 5/8" | 7 3/8" | 48'-8" | | 3 spa @ 5'-1'-3" | | 78 spa @ 7'-1"-45'-6 3/4" | 255 |
| F | W30 x 124 | 59'-1 1/2" | 8" | 60'-3" | 5/8" x 9 1/2" x 57'-4" | 12 spa @ 6'-6'-0" | | 87 spa @ 6 1/2" x 47'-11 1/2" | 336 |
| G | W30 x 124 | 71'-4 3/8" | — | 71'-9" | 1 1/2" x 9 1/2" x 69'-10" | | | 130 spa @ 6 1/2" x 70'-5" | 393 |
| H, I + J | W30 x 124 | 71'-4 3/8" | — | 71'-9" | 1 1/2" x 9 1/2" x 69'-10" | 11 spa @ 6'-5'-6" | 41 spa @ 6 1/2" x 22'-2 1/2" | 20 spa @ 9'-1"-15'-0" | 375 |
| K | W30 x 124 | 71'-4 3/8" | — | 71'-9" | 1 1/2" x 9 1/2" x 69'-10" | | | 130 spa @ 6 1/2" x 70'-5" | 393 |
| L | W30 x 124 | 59'-7 1/4" | 7 1/4" | 60'-8" | 5/8" x 9 1/2" x 57'-10" | | | 110 spa @ 6 1/2" x 59'-7 1/4" | 333 |
| M | W30 x 124 | 48'-7 3/8" | 7 1/4" | 49'-7" | | 11 spa @ 6 1/2" x 5'-11 1/2" | | 63 spa @ 7'-1"-36'-8 3/4" | 258 |
| N | W30 x 124 | 40'-11 1/8" | 6 13/16" | 42'-0" | | 19 spa @ 7'-11'-1" | | 25 spa @ 9'-1"-18'-9 3/4" | 132 |
| O | W27 x 102 | 35'-2 3/8" | 7 1/8" | 36'-3" | | 24 spa @ 6'-12'-0" | | 15 spa @ 9'-1"-11'-2 3/4" | 192 |
| P | W24 x 84 | 30'-9 3/8" | 7 3/8" | 31'-10" | | 15 spa @ 6'-7'-6" | | 21 spa @ 9'-1"-15'-9 3/4" | 156 |

* Beams A thru P and all cover plates shall conform to N.T.R. (Notch Toughness Requirement)

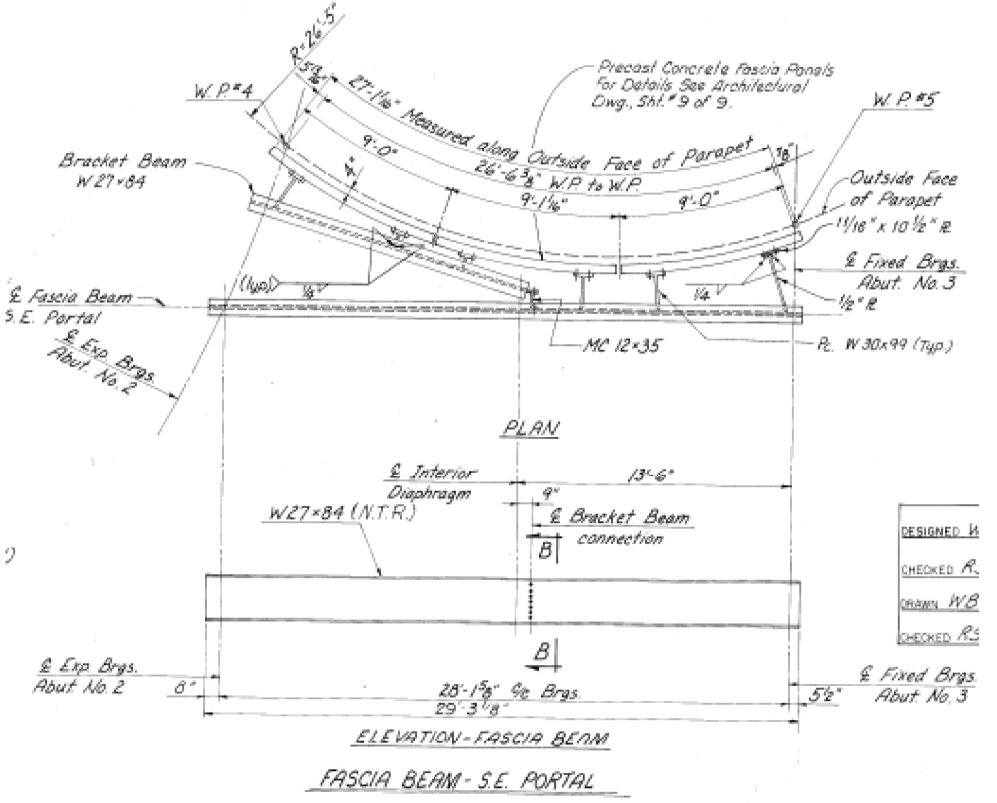
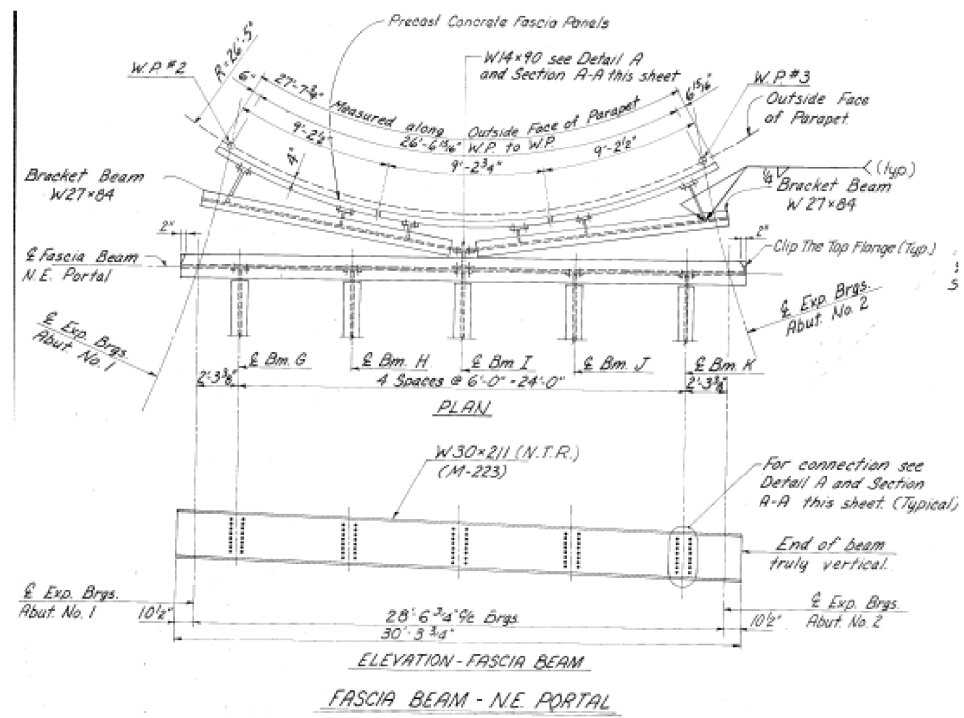
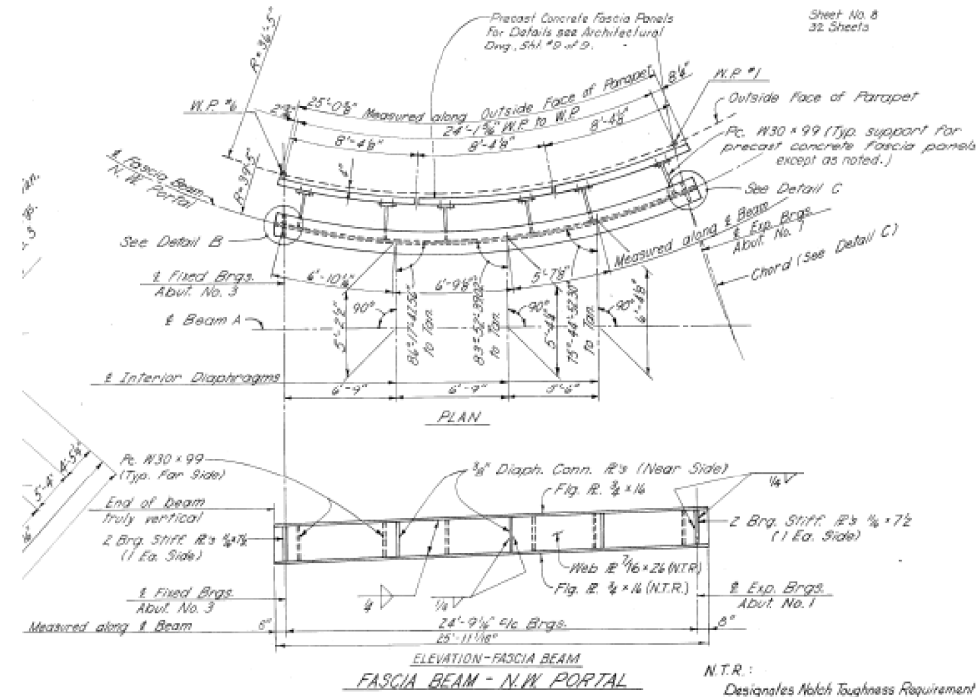
| Location | Bm. A | Bm. B | Bm. C | Bm. D | Bm. E | Bm. F | Bm. G | Bm. H | Bm. I | Bm. J | Bm. K | Bm. L | Bm. M | Bm. N | Bm. O | Bm. P |
|----------|-------------|-----------|-----------|-----------|-----------|-----------|-----------|-----------|-----------|-----------|-----------|-----------|-----------|-----------|-----------|-----------|
| Line X | | | | | | | | | | | | | | | | |
| Line Y | | | 10'-2" | 11'-3" | 1-2'-5" | 1-2'-0" | 1-1'-2" | 1-1'-2" | 1-3'-0" | 1-5'-0" | 1-3'-0" | 1-3'-0" | 1-2'-0" | 1-2'-0" | 1-1'-3" | |
| Line Z | 1'-11 1/16" | 1'-0 1/4" | 1'-2 1/8" | 1'-2 1/8" | 1'-2 1/8" | 1'-1 1/8" | 1'-2 1/8" | 1'-2 1/8" | 1'-2 1/8" | 1'-2 1/8" | 1'-2 1/8" | 1'-2 1/8" | 1'-2 1/8" | 1'-2 1/8" | 1'-2 1/8" | 1'-2 1/8" |

Note: For the locations of the intersections of the Beams and Lines X, Y, & Z see Framing Plan, sheet No. 8 of 32.
(L) denotes left side of the Beam, (R) denotes right side of the beam.

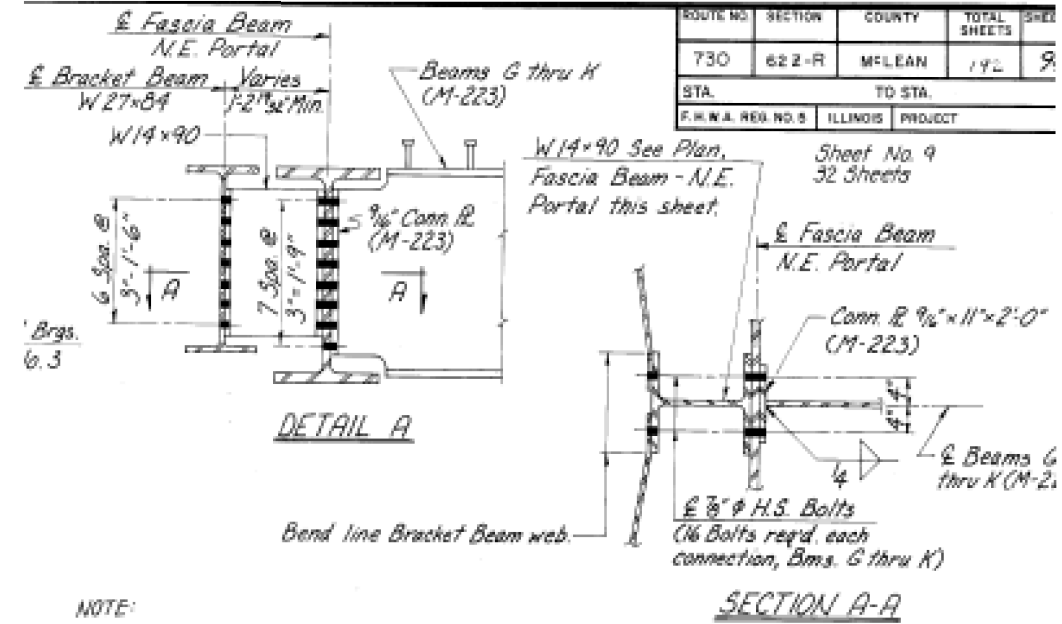
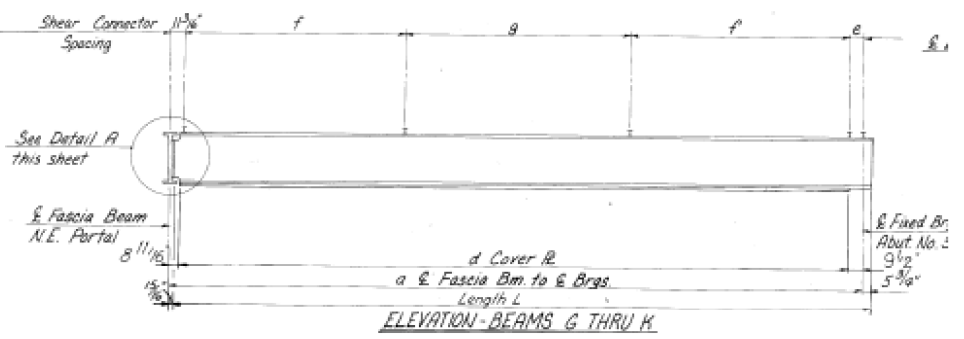
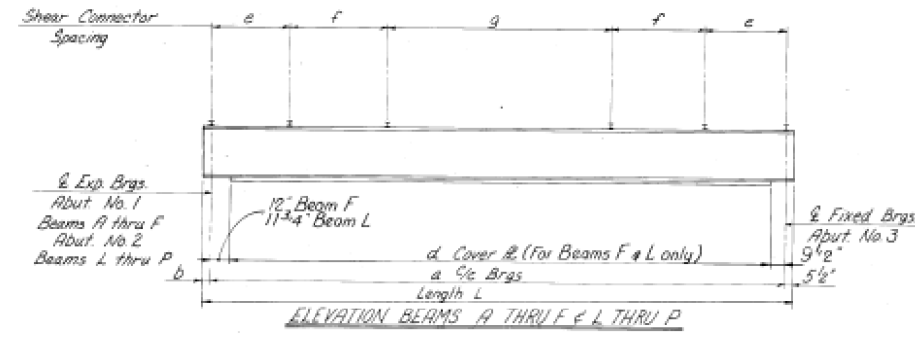


FOR INFORMATION ONLY

FOR INFORMATION ONLY
S.N. 057-0194



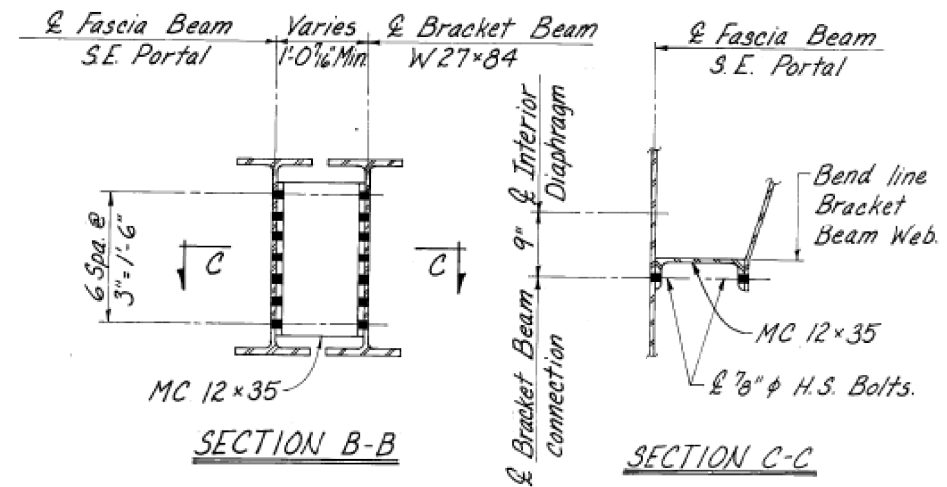
DESIGNED: H
CHECKED: R
DRAWN: W.B.
CHECKED: R.S.



| ROUTE NO. | SECTION | COUNTY | TOTAL SHEETS | SHEET NO. |
|-----------|---------|--------|--------------|-----------|
| 730 | 622-R | M'LEAN | 192 | 9 |

STA. TO STA.

F.A. R.T.E. NO. 5 ILLINOIS PROJECT



FOR INFORMATION ONLY

| FILE NAME | USER NAME | DESIGNED | REVISIONS |
|--|-----------|----------|-----------|
| pw\11084EBIDINTEG.illinois.gov\PIWIDOT\Documents\1007 Offices\District 5\Projects\057\Drawings\Design\0570832-sht-plan.dgn | coombessf | - | - |
| | | CHECKED | REVISIONS |
| | | DATE | REVISIONS |

STATE OF ILLINOIS
DEPARTMENT OF TRANSPORTATION

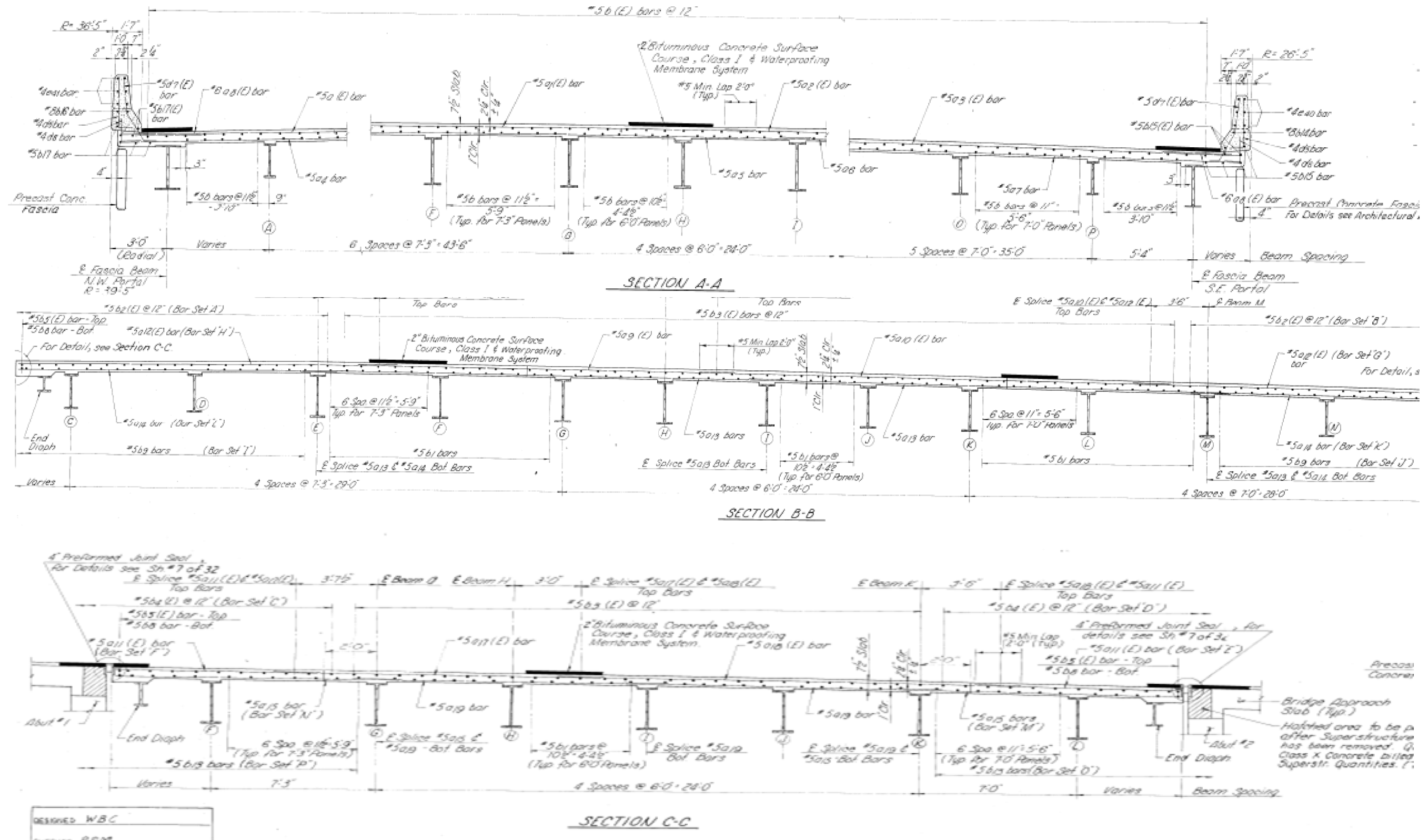
| LOCATION #1 STRUCTURE DETAILS | | | | |
|-------------------------------|-----------|-----------|------|---------|
| SCALE: | SHEET NO. | OF SHEETS | STA. | TO STA. |
| | | | | |

| F.A. R.T.E. | SECTION | COUNTY | TOTAL SHEETS | SHEET NO. |
|-------------|------------------------|--------|--------------|-----------|
| VAR. | BRIDGE PAINTING 2016-1 | M'LEAN | 20 | 9 |

CONTRACT NO. 70B32

ILLINOIS FED. AID PROJECT

FOR INFORMATION ONLY
S.N. 057-0194



FOR INFORMATION ONLY

| | | | |
|---|-----------------------|------------|-----------|
| FILE NAME - | USER NAME - coombessf | DESIGNED - | REVISED - |
| pw:\11084EBIDINTEG\11\inois.gov\PIWIDOT\Documents\DOT Offices\District 5\Projects\057-0194\Drawings\Design\0570832-shr-plan.dgn | | DRAWN - | REVISED - |
| PLOT SCALE - 48.0000' / in. | | CHECKED - | REVISED - |
| PLOT DATE - 6/3/2015 | | DATE - | REVISED - |

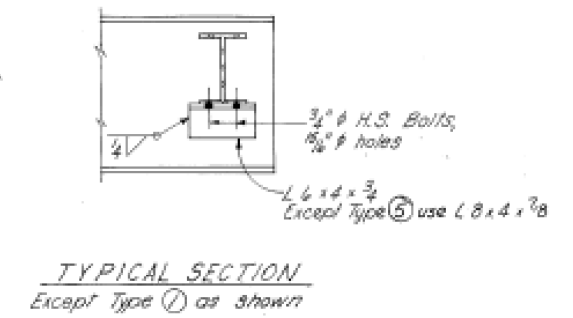
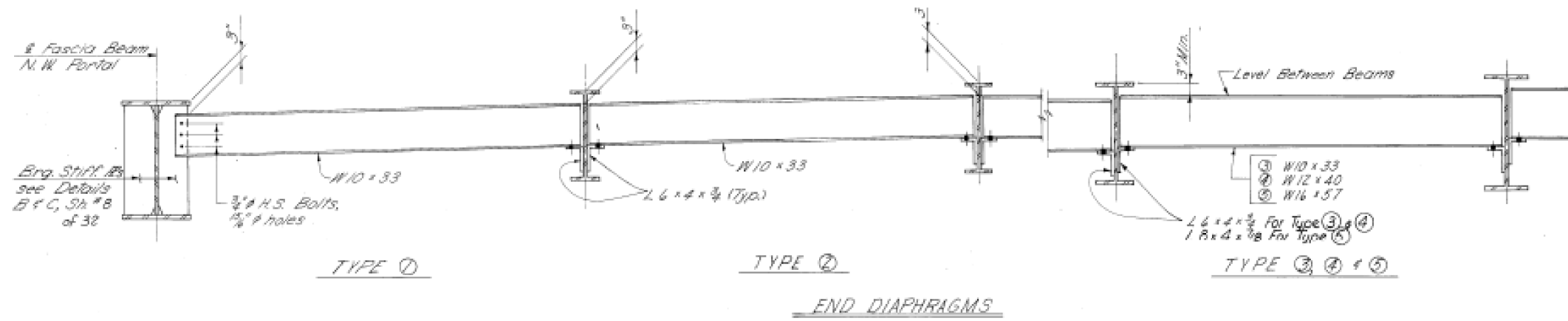
STATE OF ILLINOIS
DEPARTMENT OF TRANSPORTATION

LOCATION #1 STRUCTURE DETAILS

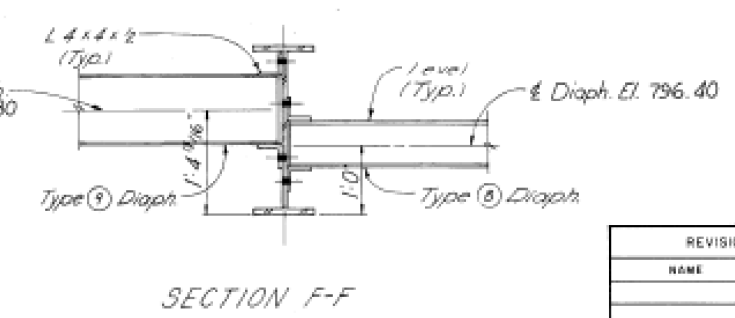
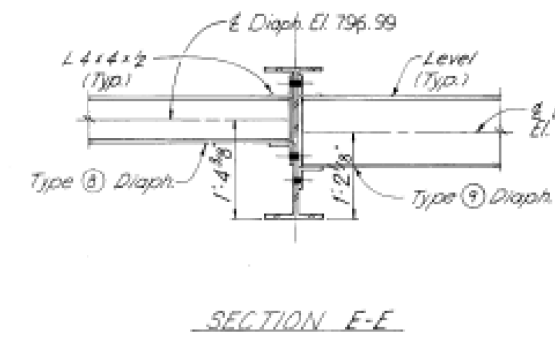
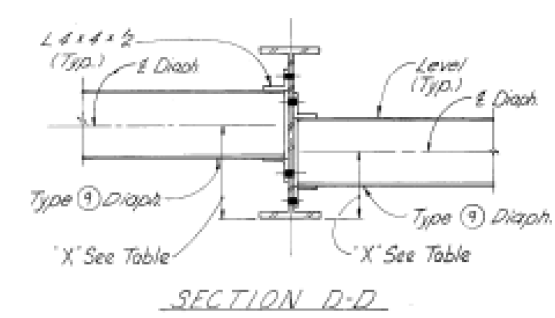
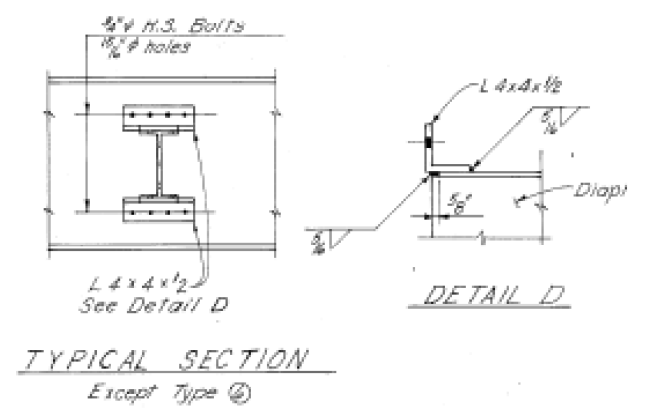
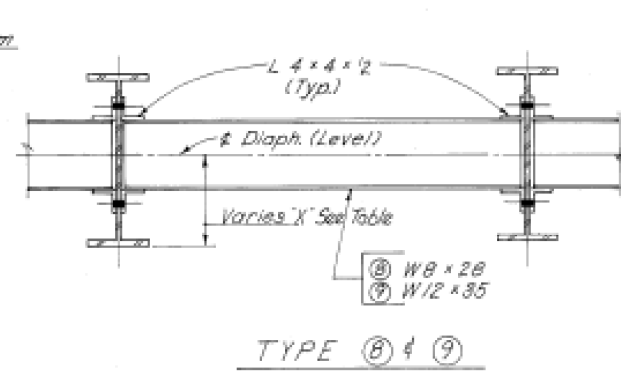
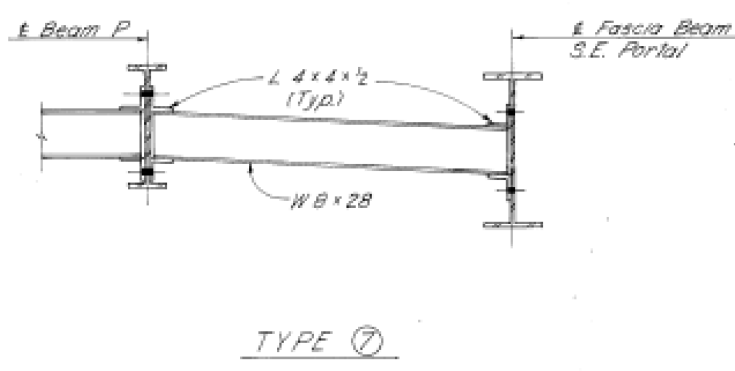
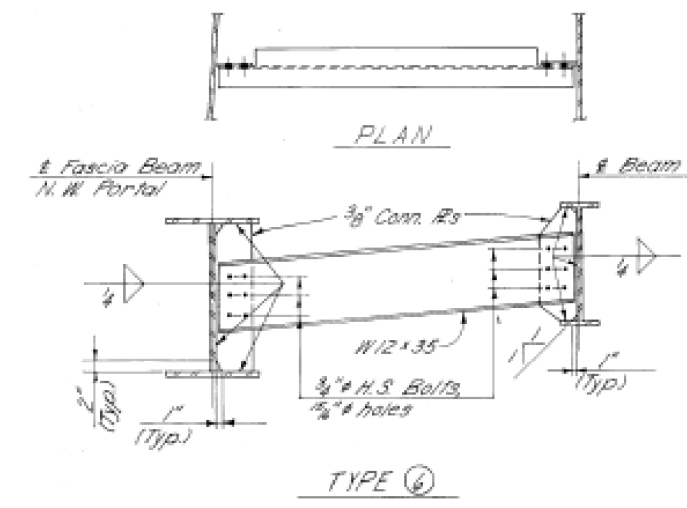
SCALE: SHEET NO. OF SHEETS STA. TO STA.

| | | | | |
|---------------------------|------------------------|--------|--------------|-----------|
| F.A. RTE. | SECTION | COUNTY | TOTAL SHEETS | SHEET NO. |
| VAR. | BRIDGE PAINTING 2016-1 | MCLEAN | 20 | 10 |
| CONTRACT NO. 70B32 | | | | |
| ILLINOIS FED. AID PROJECT | | | | |

FOR INFORMATION ONLY
S.N. 057-0194



NOTES:
 - Hardened washers shall be required over 15/16\"/>



DEPARTMENT OF TRANSPORTATION
DIAPHRAGM DETAILS
F. A. ROUTE 730
SECTION 62Z-R
MCLEAN COUNTY
 DATE _____
 CHECKED BY _____

| REVISIONS | |
|-----------|------|
| NO. | DATE |
| | |
| | |
| | |
| | |

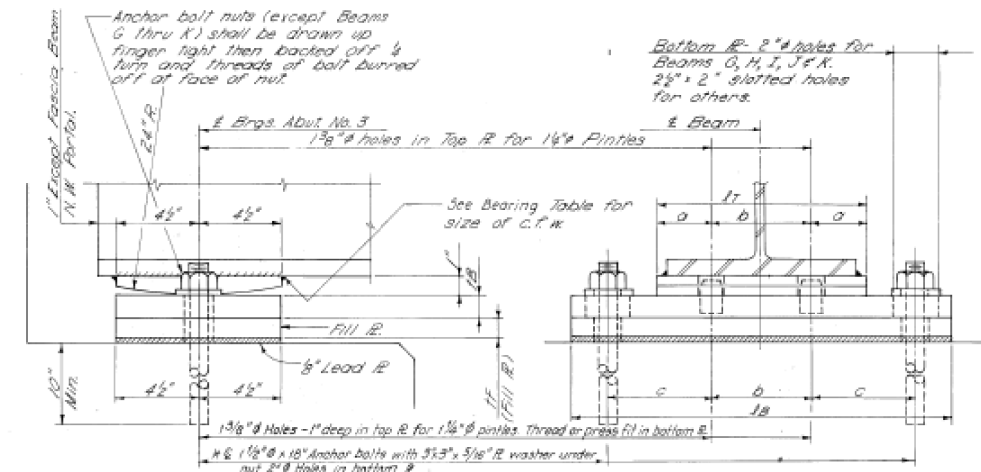
CYW

FOR INFORMATION ONLY

FOR INFORMATION ONLY
S.N. 057-0194

| ROUTE NO. | SECTION | COUNTY | TOTAL SHEETS |
|-------------------|----------|---------|--------------|
| 730 | 627-R | MCLEAN | 19 |
| STA. | TO STA. | | |
| F.A.A. REG. NO. 0 | ILLINOIS | PROJECT | |

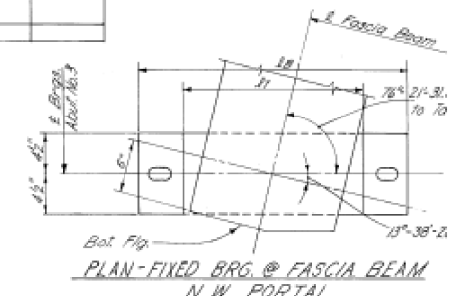
Sheet No 11
32 Sheets



FIXED BEARING TABLE

| Beam | LT | TR | C.F.W | TR | TF | a | b | c | No. Req'd. | Total Wt. |
|--------------------------|--------|--------|-------|-------|----|-------|--------|-------|------------|-----------|
| Fascia Beam N.W. Portal | 19 1/2 | 24 | 5/8 | 1 7/8 | 2 | 4 | 11 1/2 | 6 1/2 | 1 | |
| A, B, F, P | 10 | 17 1/2 | 5/8 | 1 7/8 | 2 | 2 1/2 | 5 | 4 1/2 | 3 | |
| C, D, O | 11 | 18 1/2 | 3/8 | 1 1/4 | * | 2 3/4 | 5 1/2 | 4 3/4 | 2 | |
| Fascia Brm - S.E. Portal | 11 | 20 1/2 | 3/8 | 1 1/4 | 2 | 2 3/4 | 5 1/2 | 5 1/2 | 1 | |
| D thru N | 11 1/2 | 19 | 3/8 | 1 1/2 | ** | 3 | 5 1/2 | 5 | 11 | |

* C-3/4, O-3/8
** D-5/8, E-L-1/2, F, H, I, J-1/8
G-3/4, M-1/4, K, N-0

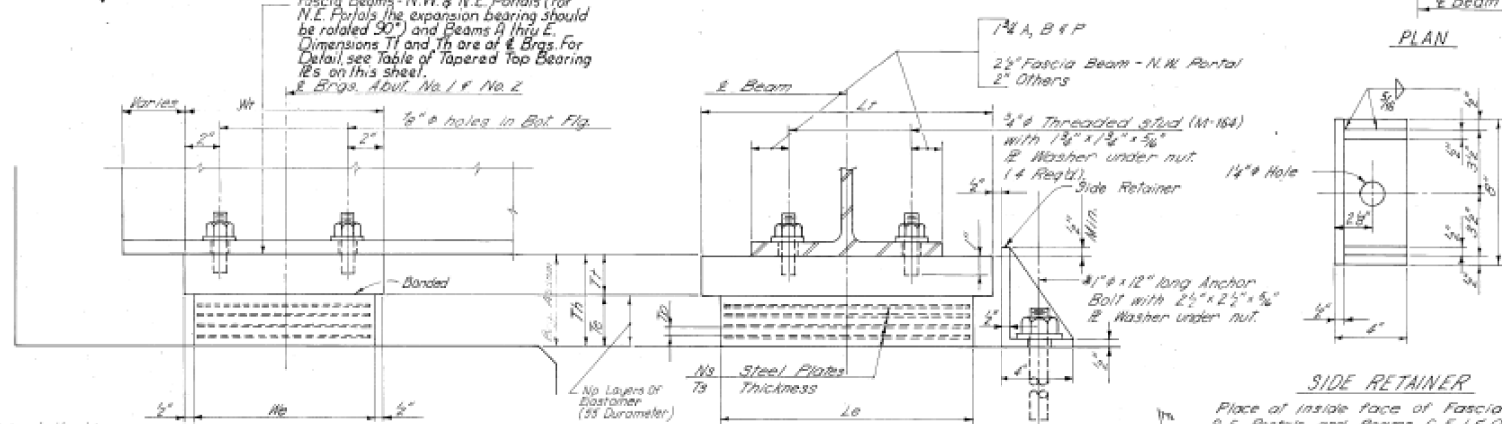


NOTE:
After Girders have been erected holes at expansion bearings shall be drilled and anchor bolts grouted in place. Anchor bolts of fixed bearings may be built into the masonry.

FIXED BEARINGS

Total No. Req'd - 18, Total Weight - 2680 Lbs.

Slope Top Brg. R's to grade of beam for Fascia Beams - N.W. & N.E. Portals (for N.E. Portals the expansion bearing should be rotated 90°) and Beams A thru E. Dimensions T1 and T2 are of E Brgs. For Detail see Table of Tapered Top Bearing R's on this sheet.



TYPE I - ELASTOMERIC EXPANSION BEARING TABLE

| Beam | Wt | Le | Te | Tp | No | Ts | Ns | WT | LT | TR | Th | No. Req'd. |
|-------------------------|----|----|-------|-------|----|-------|----|----|----|-------|-------|------------|
| Fascia Beam N.E. Portal | 18 | 13 | 2 1/2 | 1 1/2 | 3 | 8 | 2 | 19 | 14 | 2 | 4 1/2 | 2 |
| Fascia Beam N.W. Portal | 6 | 10 | 1 1/2 | 5/8 | 3 | 3 1/2 | 2 | 7 | 19 | 1 1/2 | 2 1/2 | 1 |
| A | 7 | 12 | 1 1/2 | 3/4 | 3 | 3 1/2 | 2 | 8 | 14 | 2 | 3 1/2 | 1 |
| B, F, P | 7 | 12 | 1 1/2 | 3/4 | 3 | 3 1/2 | 2 | 8 | 14 | 2 1/2 | 3 1/2 | 2 |
| C, D, O & N | 9 | 12 | 2 1/4 | 3/4 | 5 | 3 1/2 | 4 | 10 | 14 | 2 | 4 1/2 | 4 |
| E & M | 9 | 12 | 2 1/4 | 3/4 | 5 | 3 1/2 | 4 | 10 | 14 | 2 1/2 | 4 1/2 | 2 |
| F & L | 10 | 14 | 2 1/2 | 7/8 | 5 | 4 | 4 | 11 | 16 | 2 1/2 | 4 1/2 | 2 |
| Fascia Beam S.E. Portal | 6 | 10 | 1 1/2 | 5/8 | 3 | 3 1/2 | 2 | 7 | 13 | 1 1/2 | 2 1/2 | 1 |

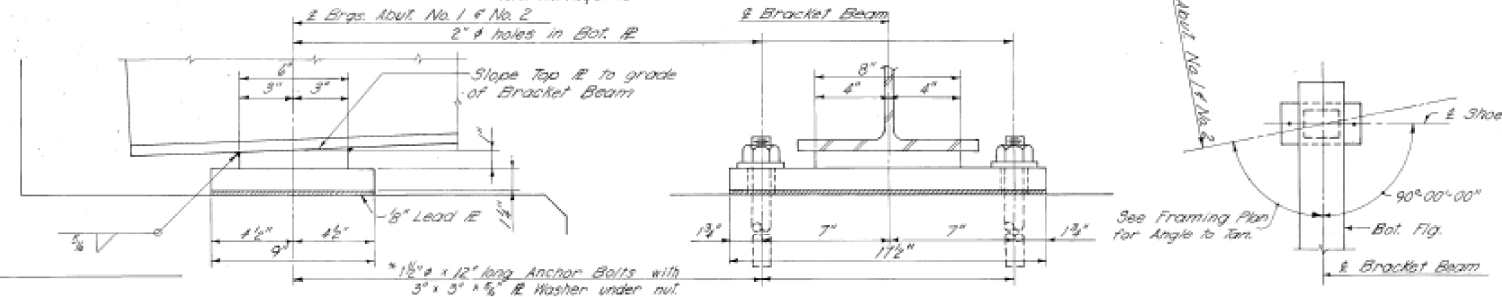
DIMENSIONS FOR TAPERED TOP BEARING PLATES

| Beam | Slope 5% | Wt | Te | t1 | t2 |
|-----------------------|----------|-----|--------|---------|----------|
| Fascia Beam N. Portal | 2.70 | 19" | 2" | 2 1/4" | 1 3/4" |
| Fascia Beam N. Portal | 2.85 | 7" | 1 1/2" | 1 3/8" | 1 3/8" |
| A | 2.27 | 8" | 2" | 2 1/16" | 1 15/16" |
| B | 1.80 | 8" | 2 1/8" | 2 3/16" | 2 1/16" |
| C | 1.57 | 10" | 2" | 2 1/16" | 1 15/16" |
| D | 1.42 | 10" | 2" | 2 1/16" | 1 15/16" |
| E | 0.98 | 10" | 2 1/8" | 2 3/16" | 2 1/16" |

NOTE:
Shim Plates shall not be placed in bottom.

TYPE I - ELASTOMERIC EXPANSION BEARING

Total No. Req'd - 15

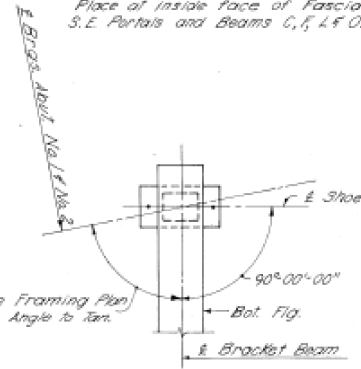


BRACKET BEAM EXPANSION BEARING

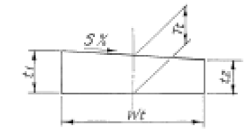
No. Req'd - 3, Total Weight - 256 Lbs.

SIDE RETAINER

Place at inside face of Fascia Beams - N.W. & S.E. Portals and Beams C, I, L & O.



TAPERED TOP BEARING R'S DETAIL



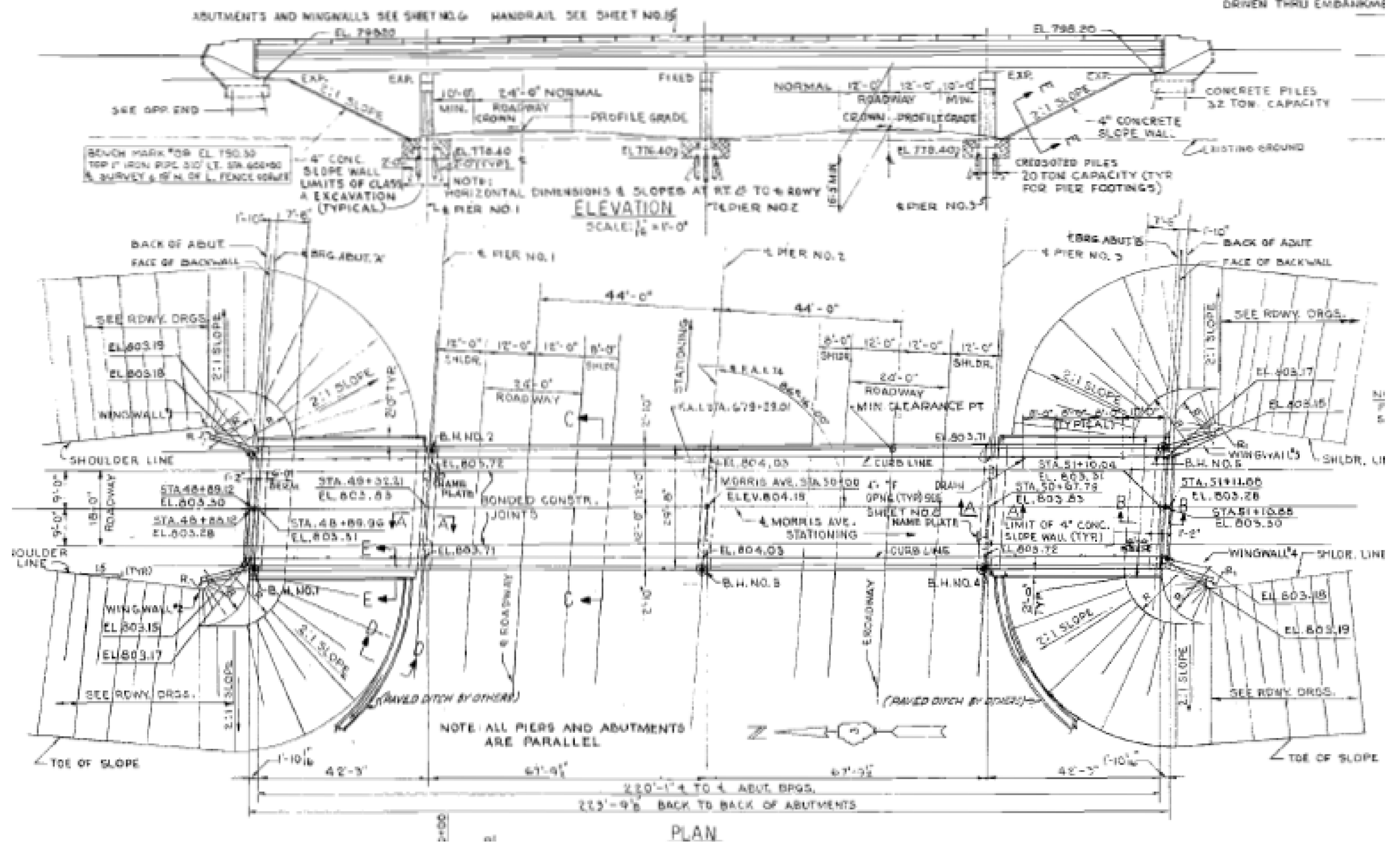
DESIGNED WBC

| REVISIONS | |
|-----------|------|
| NAME | DATE |
| | |

DEPARTMENT OF TRANSPORTATION
BEARING DETAILS
F. A. ROUTE 730

FOR INFORMATION ONLY

FOR INFORMATION ONLY
057-0116



FOR INFORMATION ONLY

| | | | |
|--|-----------------------|------------|-----------|
| FILE NAME = | USER NAME = coombessf | DESIGNED - | REVISED - |
| pw\1\084EBID\INTEG\illinois.gov\PIWID\Documents\DOT Offices\District 5\Projects\057\Drawings\Design\0570832-sht-plan.dgn | | CHECKED - | REVISED - |
| | | DATE - | REVISED - |

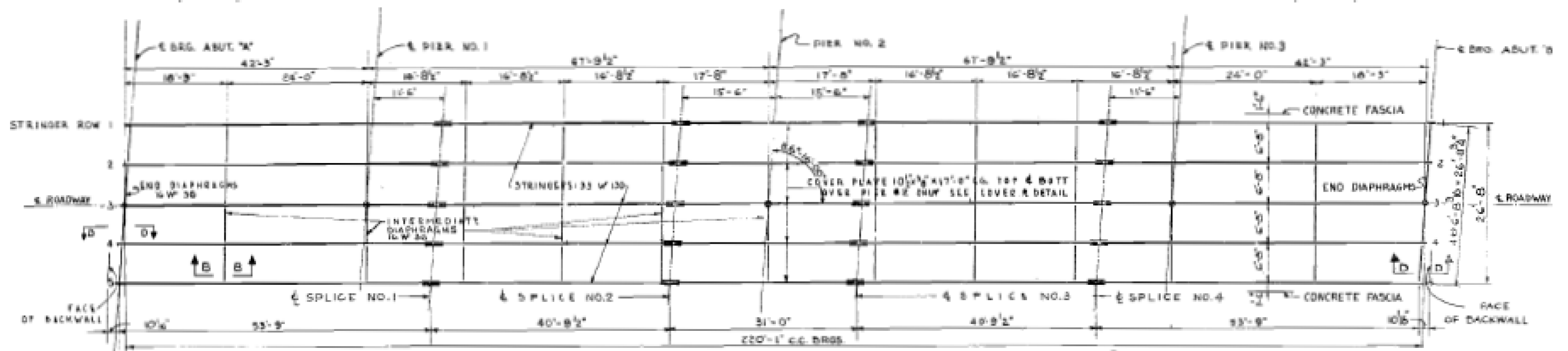
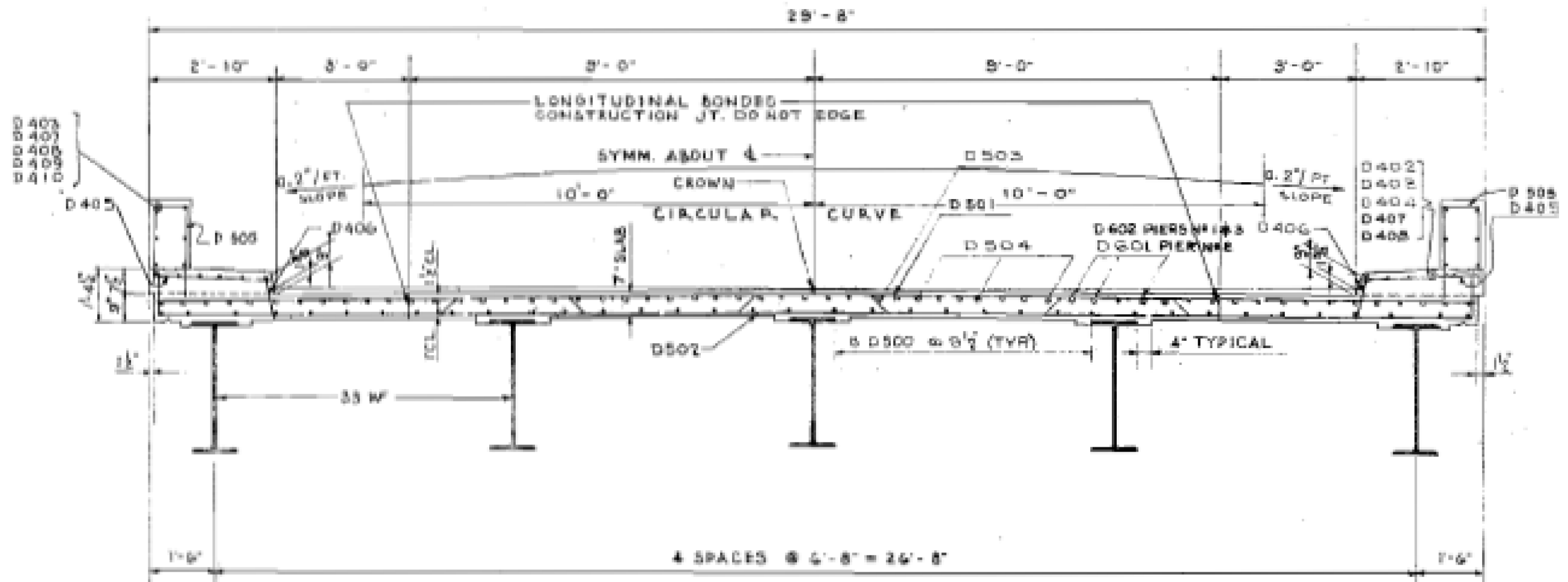
STATE OF ILLINOIS
DEPARTMENT OF TRANSPORTATION

LOCATION #2 STRUCTURE DETAILS

SCALE: SHEET NO. OF SHEETS STA. TO STA.

| | | | | |
|---------------------------|------------------------|--------|--------------------|-----------|
| F.A. RTE. | SECTION | COUNTY | TOTAL SHEETS | SHEET NO. |
| VAR. | BRIDGE PAINTING 2016-1 | MCLEAN | 20 | 13 |
| | | | CONTRACT NO. 70B32 | |
| ILLINOIS FED. AID PROJECT | | | | |

FOR INFORMATION ONLY
S.N. 057-0116

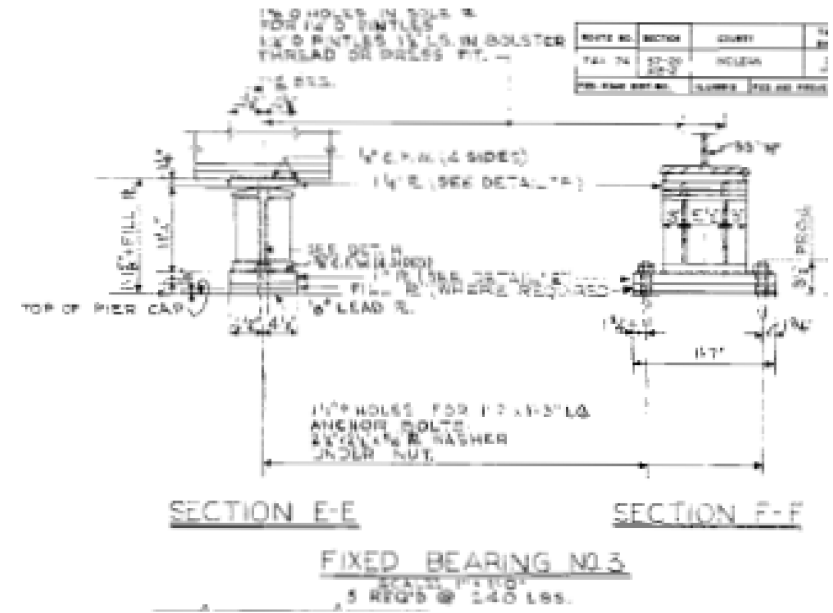
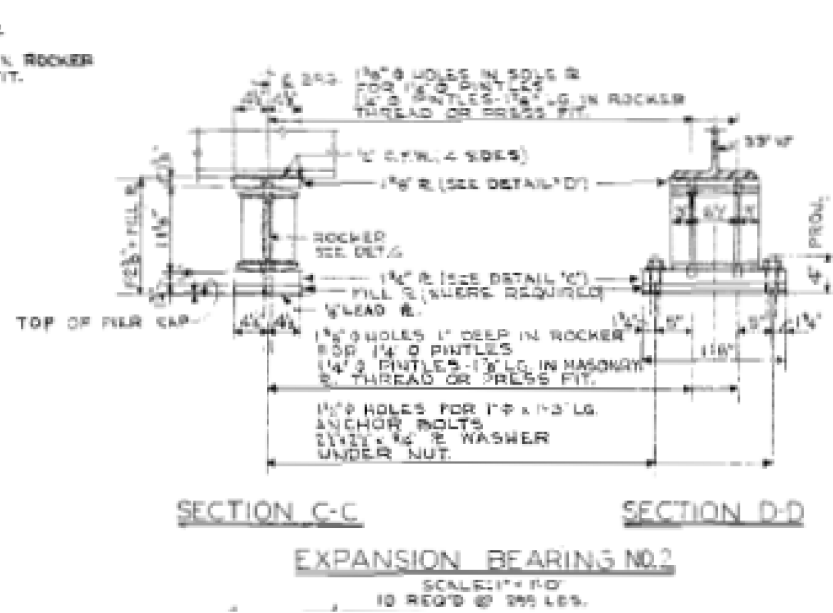
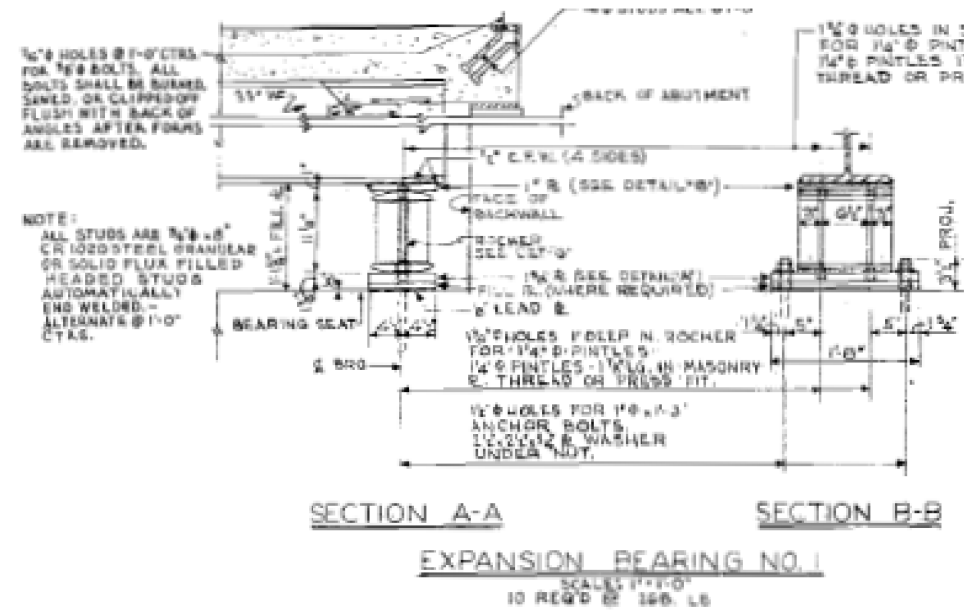
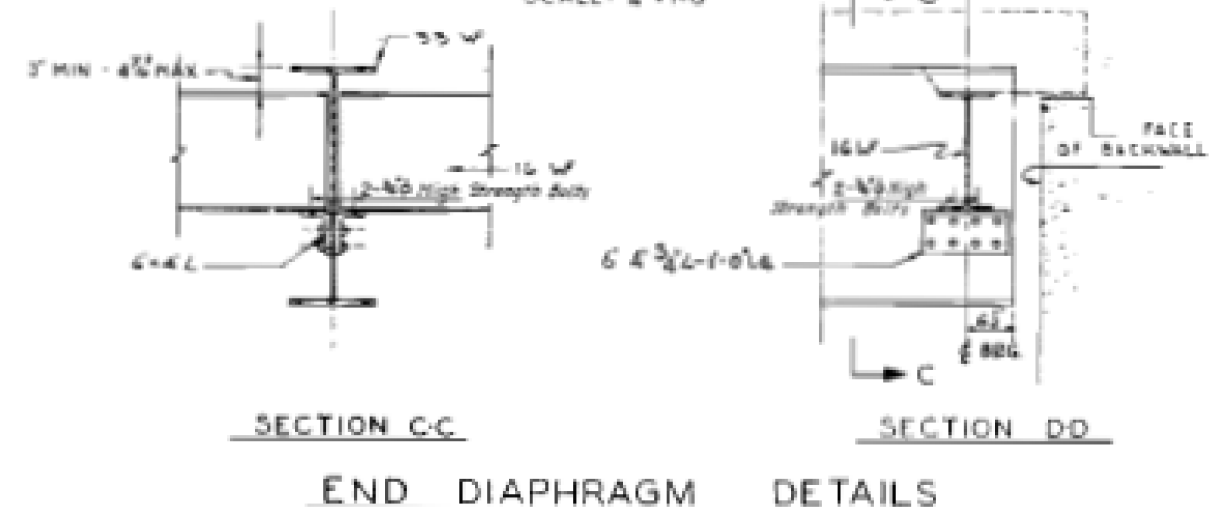
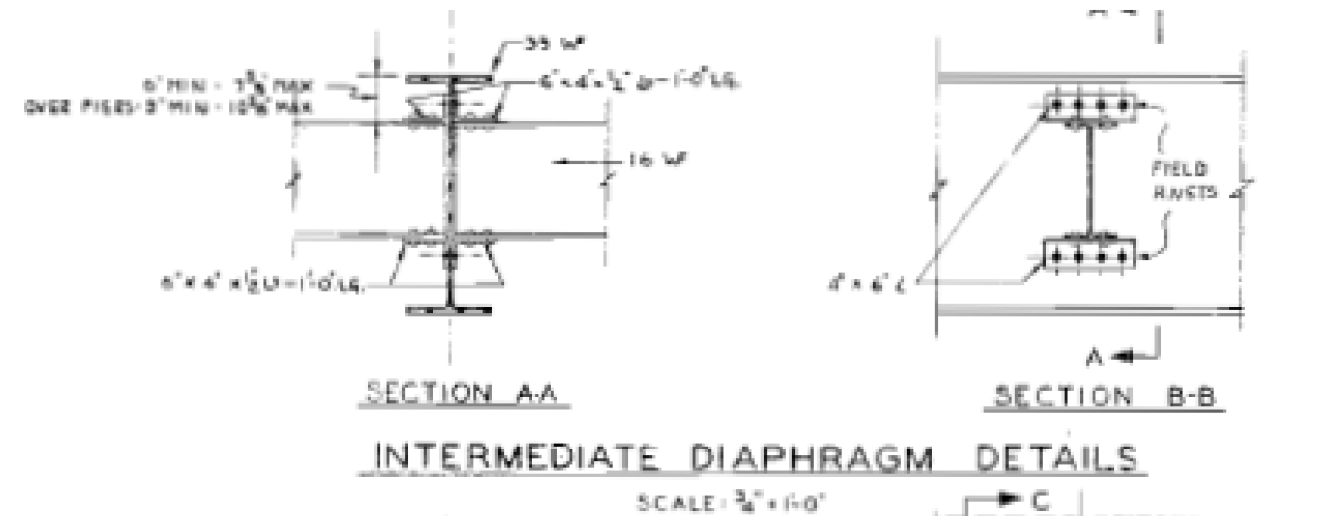
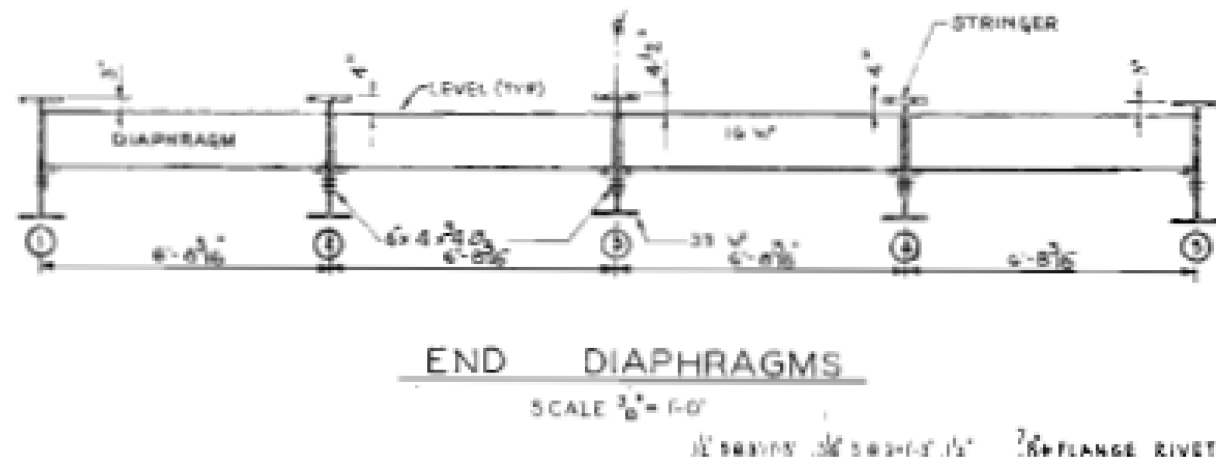
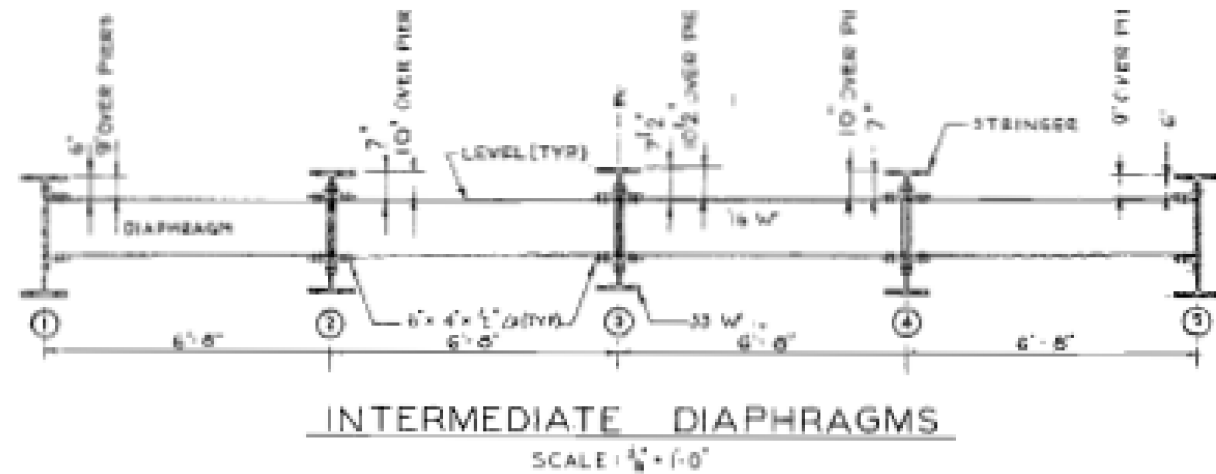


NOTE: ALL PIERS AND ABUTMENTS ARE PARALLEL

FRAMING PLAN
FOR INFORMATION ONLY

| | | | | | | | | | | | | |
|---|-----------------------|------------|-----------|---|---|--|--|---------------------------|------------------------|--------|--------------|-----------|
| FILE NAME - | USER NAME - coombessf | DESIGNED - | REVISED - | STATE OF ILLINOIS DEPARTMENT OF TRANSPORTATION | LOCATION #2 STRUCTURE DETAILS | | | F.A. RTE. | SECTION | COUNTY | TOTAL SHEETS | SHEET NO. |
| pw\11084EBIDINTEG\11\inois.gov\PIWIDOT\Documents\DOT Offices\District 5\Projects\057\Drawings\Design\0570832-shr-plan.dgn | | CHECKED - | REVISED - | | | | | VAR. | BRIDGE PAINTING 2016-1 | MCLEAN | 20 | 14 |
| PLOT SCALE - 48.0000' / in. | | DATE - | REVISED - | | SCALE: SHEET NO. OF SHEETS STA. TO STA. | | | CONTRACT NO. 70B32 | | | | |
| PLOT DATE - 6/4/2015 | | | | | | | | ILLINOIS FED. AID PROJECT | | | | |

FOR INFORMATION ONLY
S.N. 057-0116



FOR INFORMATION ONLY

| | | | |
|--|-----------------------|------------|-----------|
| FILE NAME = | USER NAME = coombessf | DESIGNED - | REVISED - |
| pw\11084EBIDINTEG.illinois.gov\PIWIDT\Documents\DOT Offices\District 5\Projects\057\Drawings\Design\0570832-shr-plan.dgn | | CHECKED - | REVISED - |
| | | DATE - | REVISED - |

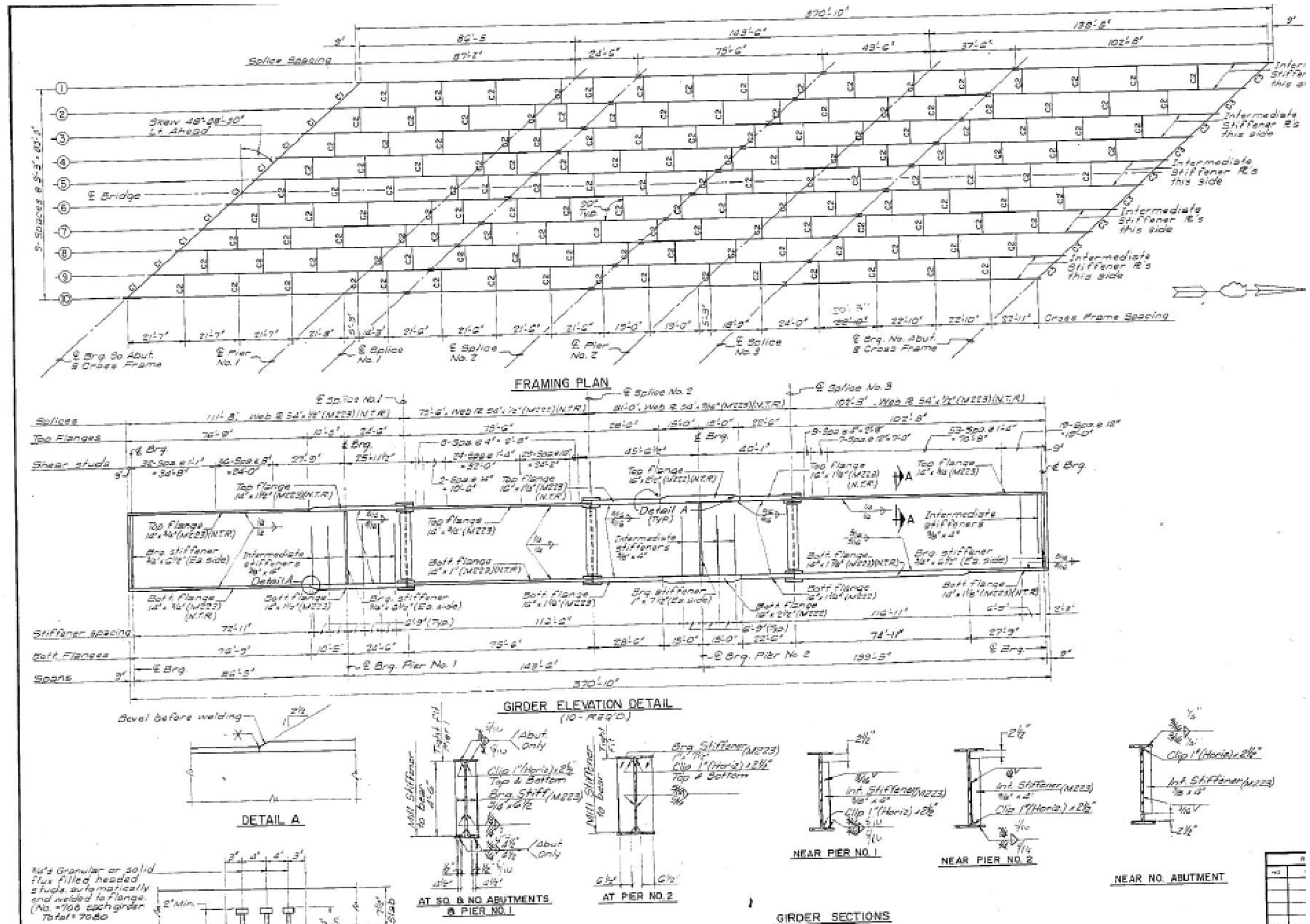
STATE OF ILLINOIS
DEPARTMENT OF TRANSPORTATION

LOCATION #2 STRUCTURE DETAILS

| | | | | |
|--------|-----------|-----------|------|---------|
| SCALE: | SHEET NO. | OF SHEETS | STA. | TO STA. |
|--------|-----------|-----------|------|---------|

| | | | | |
|---------------------------|------------------------|--------|--------------|-----------|
| F.A. RTE. | SECTION | COUNTY | TOTAL SHEETS | SHEET NO. |
| VAR. | BRIDGE PAINTING 2016-1 | MCLEAN | 20 | 15 |
| CONTRACT NO. 70B32 | | | | |
| ILLINOIS FED. AID PROJECT | | | | |

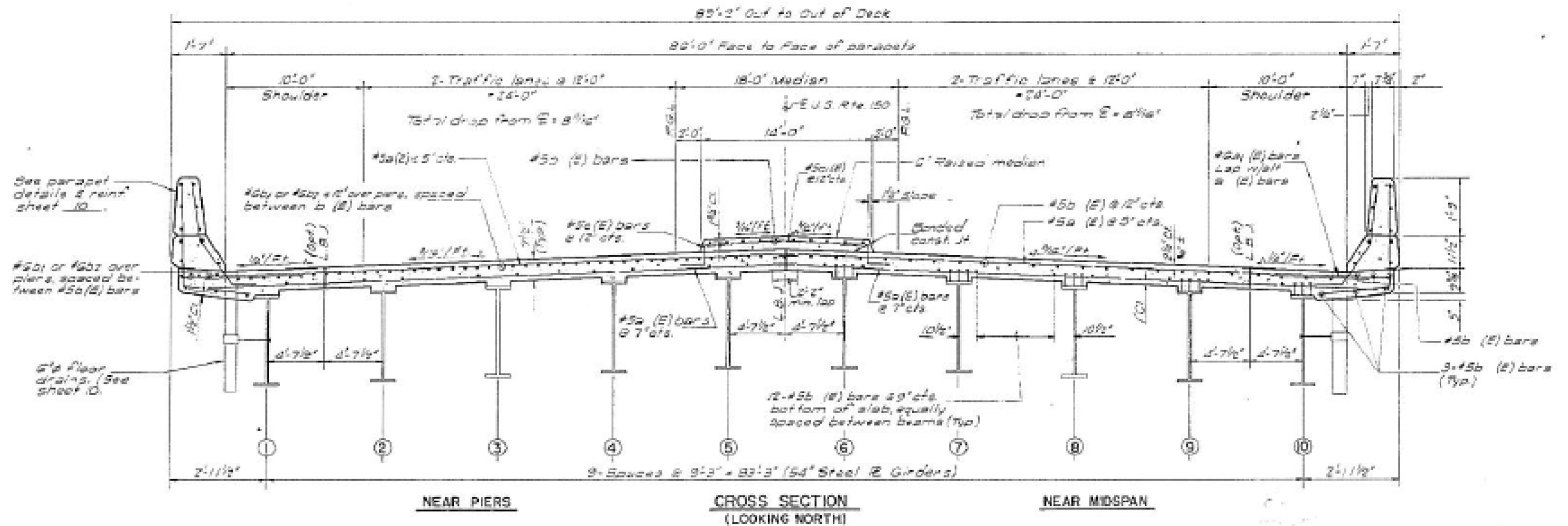
FOR INFORMATION ONLY
S.N. 057-0202



FOR INFORMATION ONLY

| | | | | | | | | | | | | |
|---|-----------------------|------------|-----------|---|---|--|--|--------------------|------------------------|--------|--------------|-----------|
| FILE NAME - | USER NAME - coombessf | DESIGNED - | REVISED - | STATE OF ILLINOIS DEPARTMENT OF TRANSPORTATION | LOCATION #3 STRUCTURE DETAILS | | | F.A. RTE. | SECTION | COUNTY | TOTAL SHEETS | SHEET NO. |
| pw\1\084EBID\INTEG\Illinois.gov\PI\DOT\Documents\DOT Offices\District 5\Projects\057\Drawings\Design\0570832-shr-plan.dgn | | | | | | | | VAR. | BRIDGE PAINTING 2016-1 | MCLEAN | 20 | 17 |
| PLOT SCALE - 48.0000' / in. | CHECKED - | REVISED - | REVISED - | | SCALE: SHEET NO. OF SHEETS STA. TO STA. | | | CONTRACT NO. 70B32 | | | | |
| PLOT DATE - 6/4/2015 | DATE - | REVISED - | REVISED - | | ILLINOIS FED. AID PROJECT | | | | | | | |

FOR INFORMATION ONLY
S.N. 057-0202



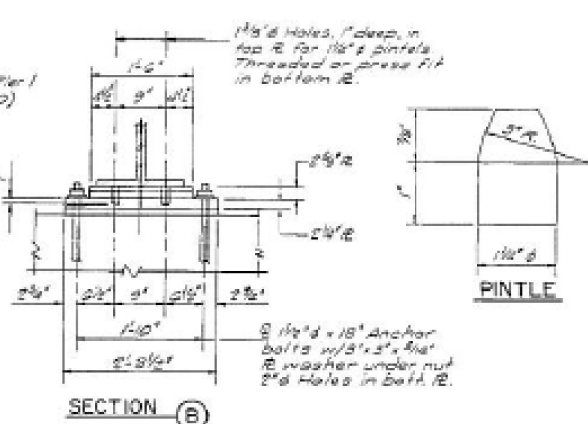
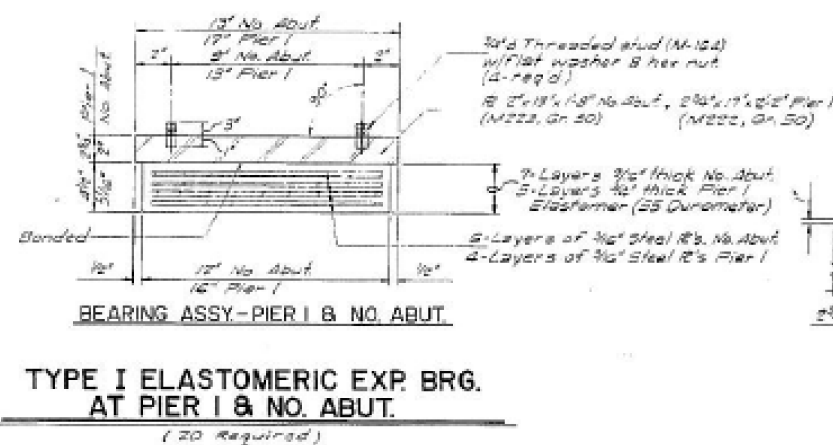
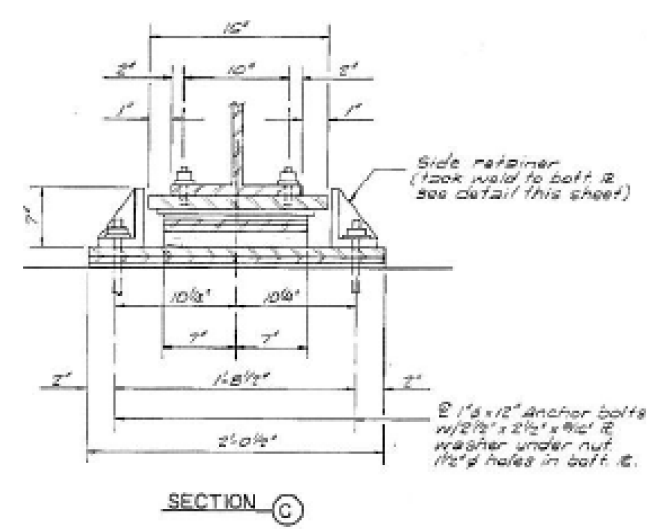
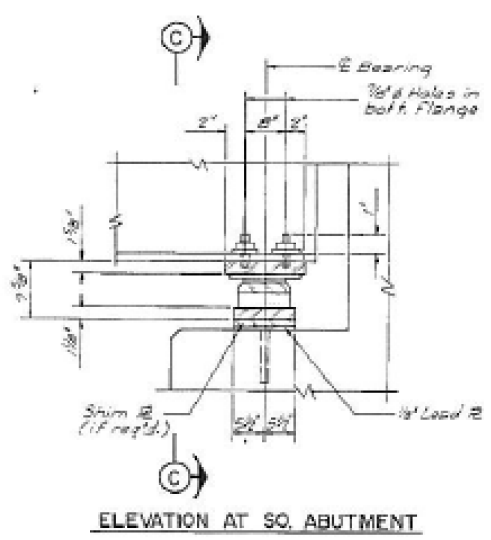
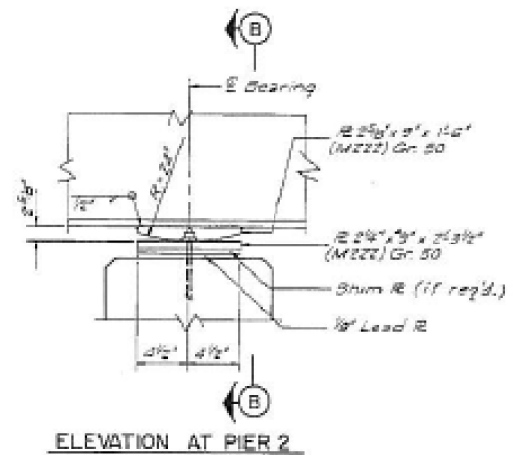
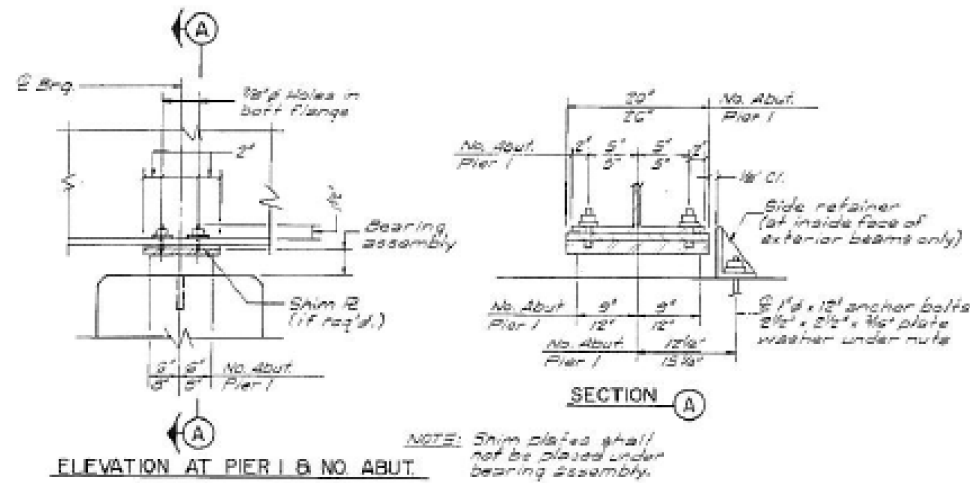
FOR INFORMATION ONLY

| | | | | | | | | | | | | | |
|--|-----------------------|------------|-----------|---|-------------------------------|-----------|-----------|------|-----------|---------------------------|--------|--------------|-----------|
| FILE NAME = | USER NAME = coombessf | DESIGNED - | REVISED - | STATE OF ILLINOIS DEPARTMENT OF TRANSPORTATION | LOCATION #3 STRUCTURE DETAILS | | | | F.A. RTE. | SECTION | COUNTY | TOTAL SHEETS | SHEET NO. |
| pw\11084EBIDINTEG.illinois.gov\PIWIDOT\Documents\DOT Offices\District 5\Projects\057\DRAWING\Design\0570832-shr-plan.dgn | | DRAWN - | REVISED - | | | | | | VAR. | BRIDGE PAINTING 2016-1 | MCLEAN | 20 | 18 |
| PLOT SCALE = 48.0000' / in. | CHECKED - | REVISED - | REVISED - | | CONTRACT NO. 70B32 | | | | | | | | |
| PLOT DATE = 6/4/2015 | DATE - | REVISED - | REVISED - | | SCALE: | SHEET NO. | OF SHEETS | STA. | TO STA. | ILLINOIS FED. AID PROJECT | | | |

FOR INFORMATION ONLY
S.N. 057-0202

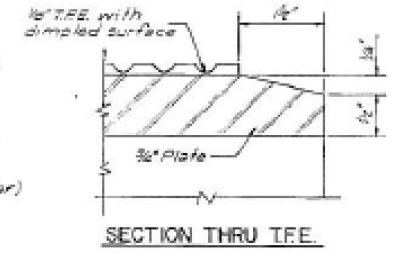
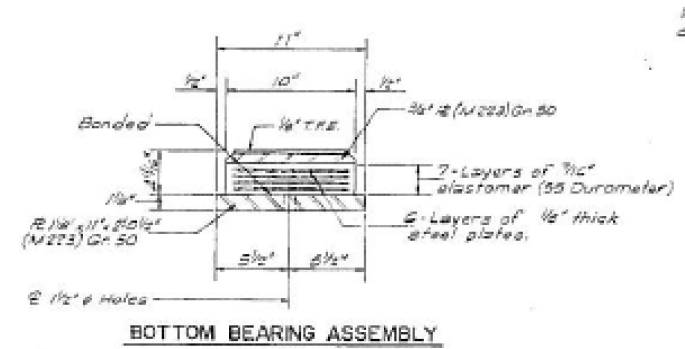
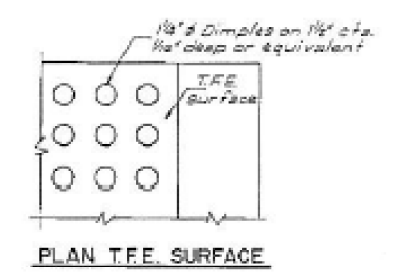
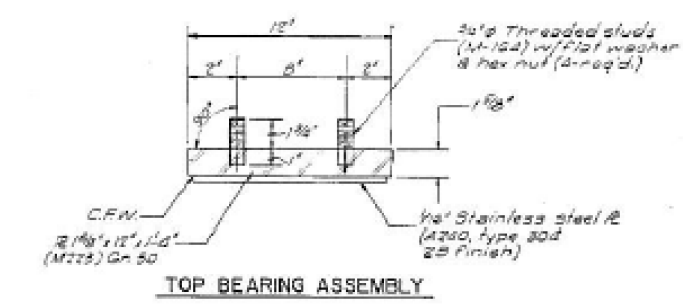
| | | | | |
|---------------------|-----------|---------|--------|----|
| ISO | D-SH/B | McLEAN | SHEETS | 20 |
| STA. | TO STA. | | 50 | 18 |
| FED. ROAD DIST. NO. | ALIGNMENT | PROJECT | | |

OF 21 SHEET



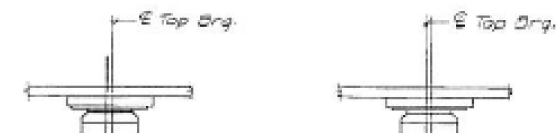
| GIRDER NO. | E THICKNESS |
|------------|-------------|
| 7 | 3/16" |
| 9 | 1/8" |
| 10 | 1/2" |

(Shim Plates to be M220)



TYPE II ELASTOMERIC EXP BRG. AT SO. ABUTMENT
(10 Required)

NOTE: Equivalent rolled angle with stiffeners will be allowed in lieu of welded plates.



NOTES

FOR INFORMATION ONLY
STATE OF ILLINOIS
DEPARTMENT OF TRANSPORTATION

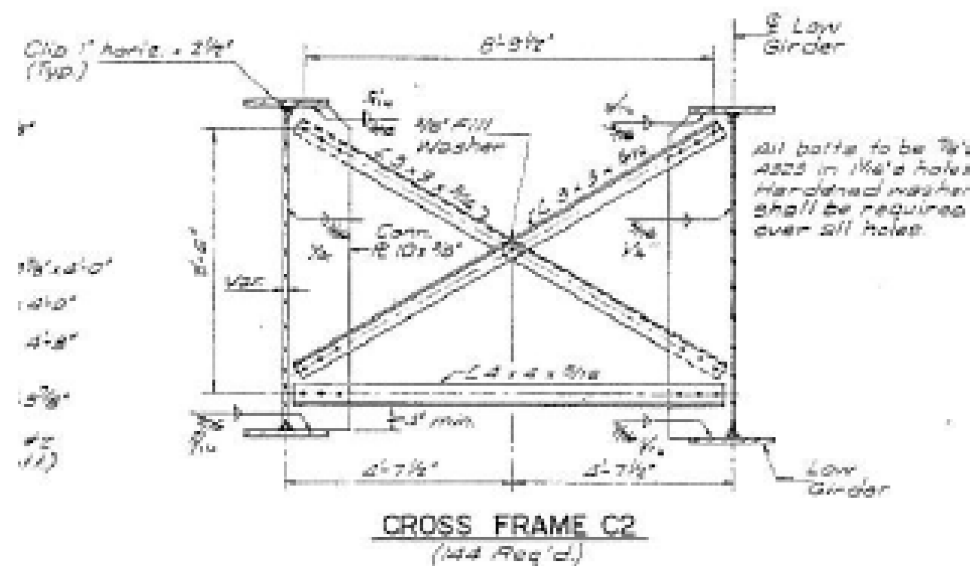
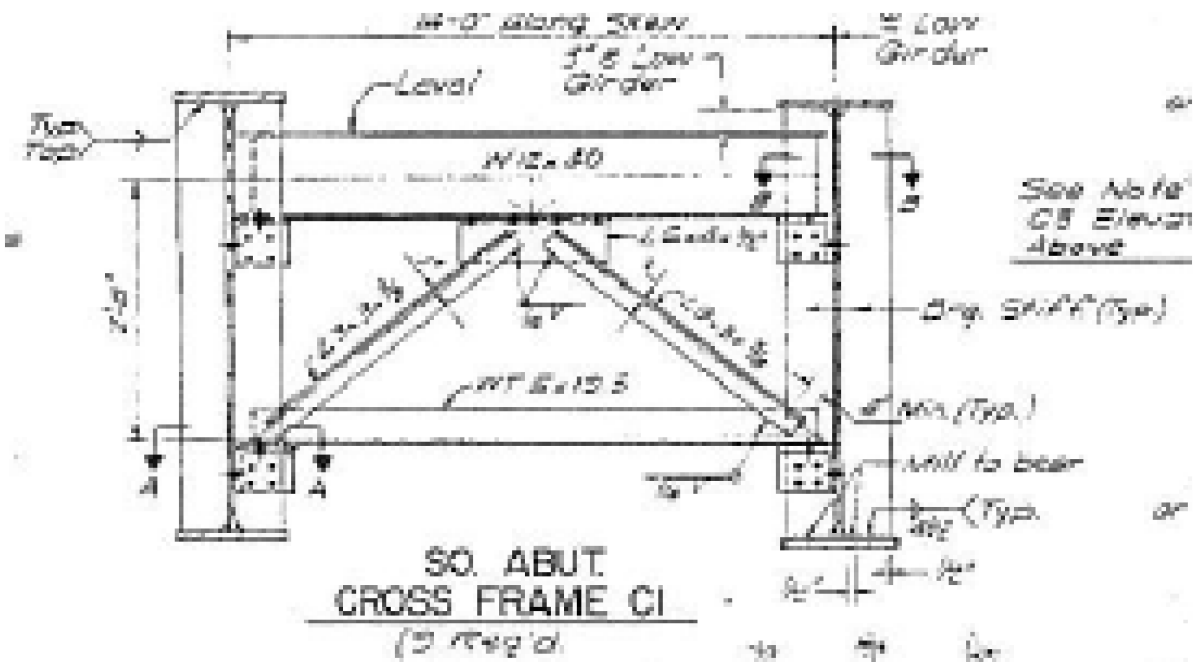
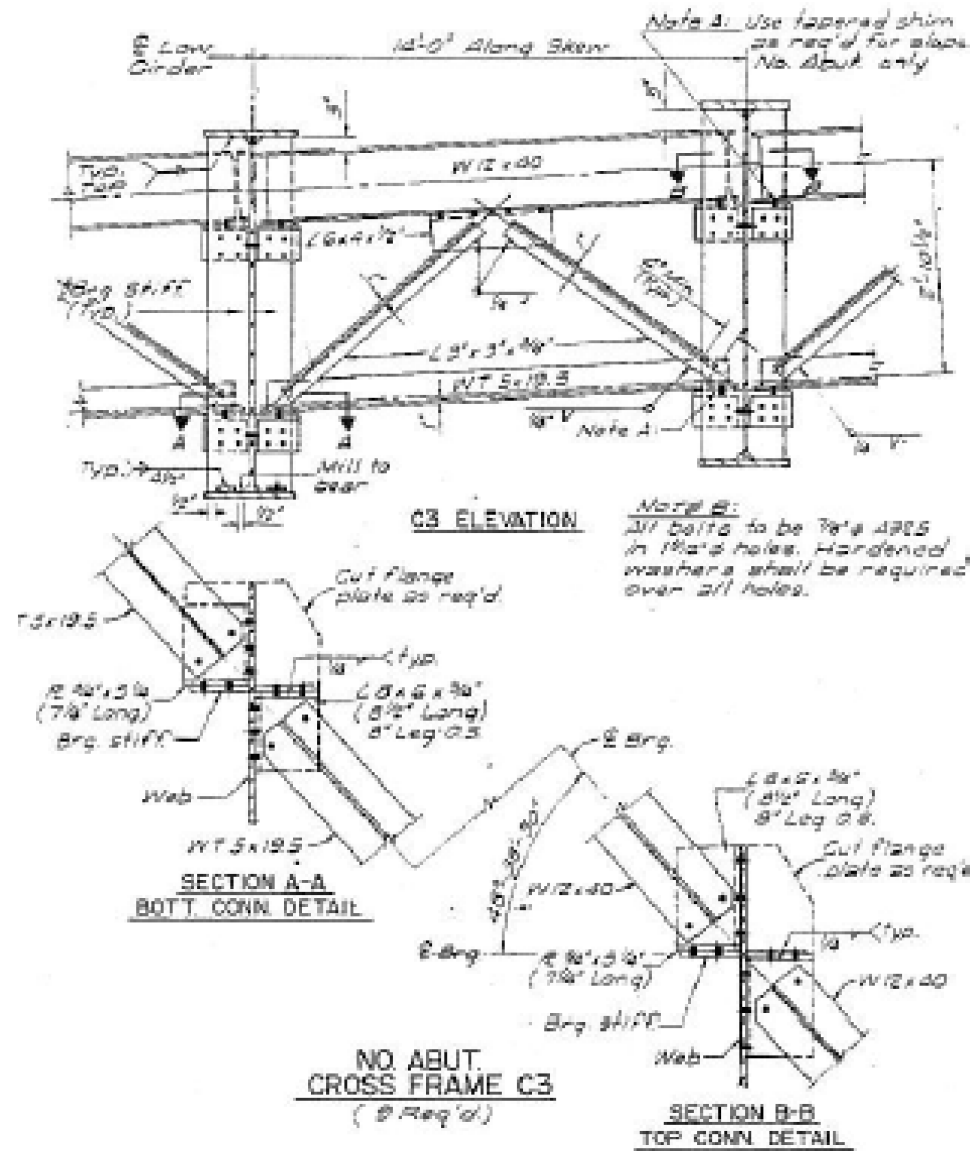
LOCATION #3 STRUCTURE DETAILS

| | | | |
|--|-----------------------|------------|-----------|
| FILE NAME = | USER NAME = coombessf | DESIGNED - | REVISED - |
| pw\11084EBIDINTEG.111nois.gov\PIWIDOT\Documents\DOT Offices\District 5\Projects\057\Drawings\Design\0570832-shr-plan.dgn | | CHECKED - | REVISED - |
| PLOT SCALE = 48.0000' / in. | | DATE - | REVISED - |
| PLOT DATE = 6/4/2015 | | | |

| | | | | | |
|--------|-----------|----|--------|------|---------|
| SCALE: | SHEET NO. | OF | SHEETS | STA. | TO STA. |
|--------|-----------|----|--------|------|---------|

| | | | | |
|---------------------------|------------------------|--------|--------------|-----------|
| F.A. RTE. | SECTION | COUNTY | TOTAL SHEETS | SHEET NO. |
| VAR. | BRIDGE PAINTING 2016-1 | MCLEAN | 20 | 19 |
| CONTRACT NO. 70B32 | | | | |
| ILLINOIS FED. AID PROJECT | | | | |

FOR INFORMATION ONLY
S.N. 057-0202



FOR INFORMATION ONLY

| | | | |
|---|-----------------------|------------|-----------|
| FILE NAME = | USER NAME = coombessf | DESIGNED - | REVISED - |
| pw\11084EBID\INTEG\Illinois.gov\PIWID\Documents\DOT Offices\District 5\Projects\057\DRAWING\Design\0570832-shr-plan.dgn | | CHECKED - | REVISED - |
| | | DATE - | REVISED - |

STATE OF ILLINOIS
DEPARTMENT OF TRANSPORTATION

LOCATION #3 STRUCTURE DETAILS

SCALE: SHEET NO. OF SHEETS STA. TO STA.

| | | | | |
|---------------------------|------------------------|--------|--------------|-----------|
| F.A. RTE. | SECTION | COUNTY | TOTAL SHEETS | SHEET NO. |
| VAR. | BRIDGE PAINTING 2016-1 | MCLEAN | 20 | 20 |
| CONTRACT NO. 70B32 | | | | |
| ILLINOIS FED. AID PROJECT | | | | |