

STATE OF ILLINOIS
DEPARTMENT OF TRANSPORTATION
DIVISION OF HIGHWAYS

F.A.P. RTE.	SECTION	COUNTY	TOTAL SHEETS	SHEET NO.
310,757 D6	BRIDGE CLEANING 2016-		5	1
	* CASS & SCOTT	ILLINOIS	CONTRACT NO. 72105	

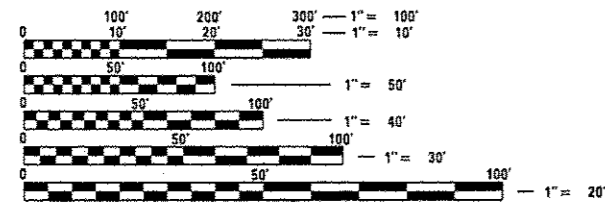
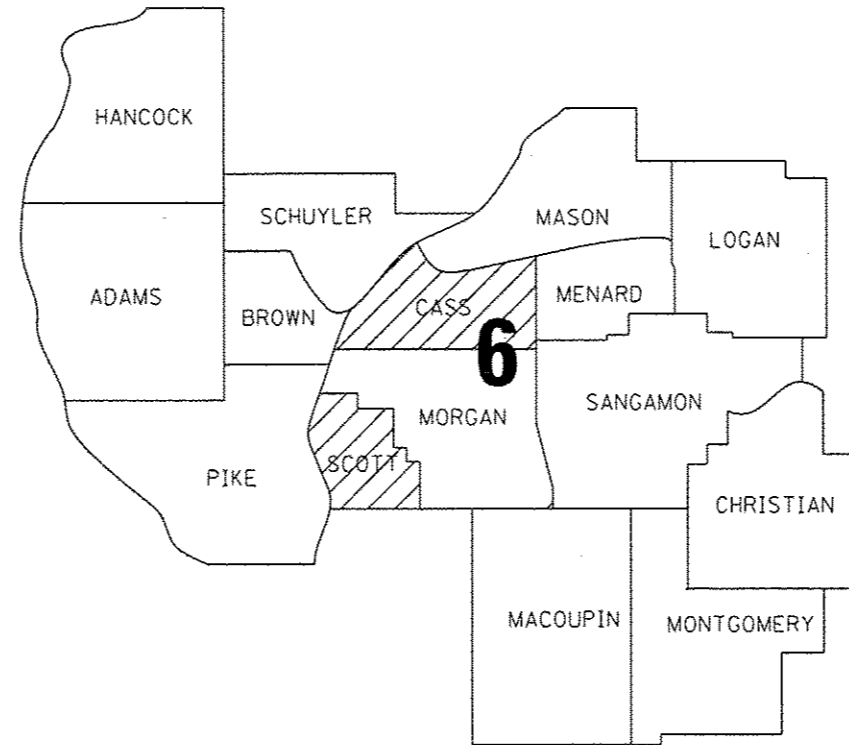
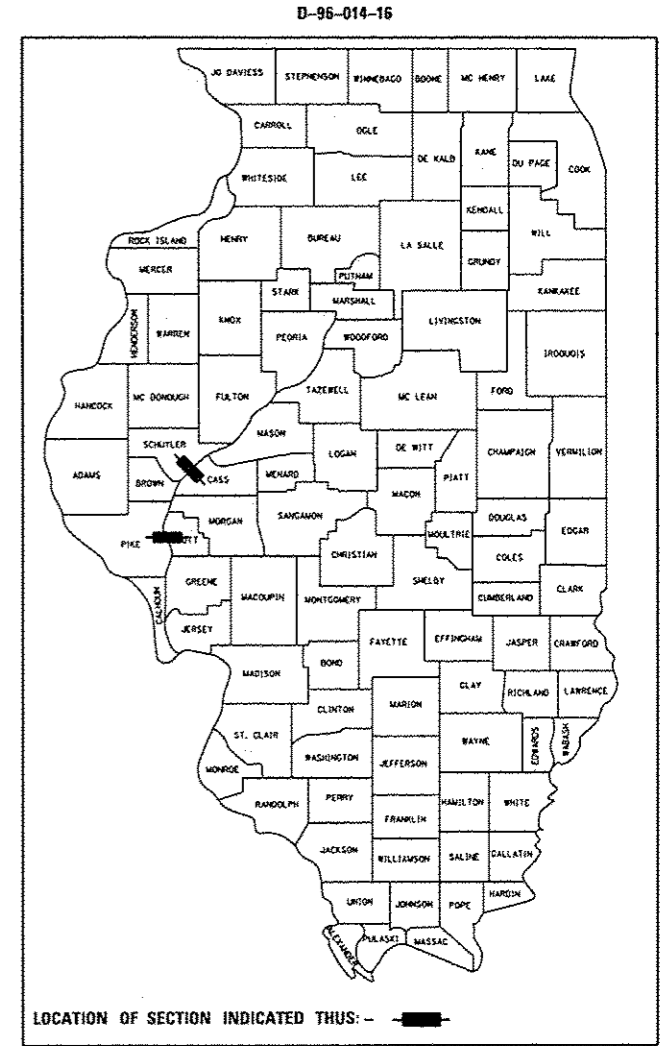
FOR INDEX OF SHEETS, SEE SHEET NO. 2

**PROPOSED
HIGHWAY PLANS**

FAP 310 & FAP 757 (US 67 & IL 100 /106)
SECTION D6 BRIDGE CLEANING 2016-1

BRIDGE WASHING
CASS & SCOTT COUNTIES

C-96-014-16



FULL SIZE PLANS HAVE BEEN PREPARED USING STANDARD ENGINEERING SCALES. REDUCED SIZED PLANS WILL NOT CONFORM TO STANDARD SCALES. IN MAKING MEASUREMENTS ON REDUCED PLANS, THE ABOVE SCALES MAY BE USED.

J.U.L.I.E.
JOINT UTILITY LOCATION INFORMATION FOR EXCAVATION
1-800-892-0123
OR 811

BRIDGE MAINTENANCE ENGINEER: BRANDON DUDLEY, 217-785-9290
BRIDGE INSPECTION ENGINEER: DAVE COPENBARGER, 217-785-5306

GROSS LENGTH = x.xx FT. = x.xxx MILE
NET LENGTH = 6803 FT. = 1.29 MILE

CONTRACT NO. 72105

STATE OF ILLINOIS
DEPARTMENT OF TRANSPORTATION
DIVISION OF HIGHWAYS

SUBMITTED August 19 2015
Roger E. Drake
DEPUTY DIRECTOR OF HIGHWAYS, REGION ENGINEER

Oct 2 2015
John D. Baranzelli P.E.
ENGINEER OF DESIGN AND ENVIRONMENT

Oct 2 2015
Omer Osman P.E.
DIRECTOR OF HIGHWAYS, CHIEF ENGINEER

**PRINTED BY THE AUTHORITY
OF THE STATE OF ILLINOIS**

INDEX OF SHEETS

1	COVER SHEET
2	INDEX, STANDARDS, GENERAL NOTES, & SIGNATURES
3	SUMMARY OF QUANTITIES
4-5	LOCATION MAPS & BRIDGE PLANS

HIGHWAY
STANDARDS

701001-02
701006-05
701201-04
701901-04

GENERAL NOTES:

BRIDGE #1 - SN 009-0001: US 67 OVER THE ILLINOIS RIVER AT THE WEST EDGE OF BEARDSTOWN IN CASS COUNTY.

BRIDGE #2 - SN 086-0001: IL 100/106 OVER THE ILLINOIS RIVER AT THE EAST EDGE OF FLORENCE IN SCOTT COUNTY.

ALL BRIDGE WASHING SHALL BE PERFORMED IN ACCORDANCE WITH ARTICLE 592 OF THE STANDARD SPECIFICATIONS AND AS OUTLINED BELOW:

- TRUSS SPANS - THE AREAS OF TRUSS SPANS TO BE WASHED SHALL INCLUDE THE FOLLOWING:
- ALL STRUCTURAL STEEL INCLUDING LOWER CHORD TO A POINT OF 10' ABOVE THE BRIDGE DECK
 - THE ENTIRE DECK SURFACE, CURB, JOINTS, DRAINS, AND RAILINGS
 - ALL FLOOR BEAMS, DIAGONAL BRACING, STRINGERS, AND OTHER STRUCTURAL STEEL FROM THE LOWER CHORD INWARD TO AND INCLUDING THE OUTSIDE AND BOTTOM OF EXTERIOR STRINGERS
 - ALL ABUTMENT AND PIER CAPS
 - ALL STRUCTURAL STEEL LOCATED BELOW THE DECK WITHIN 10' LONGITUDINALLY ON EITHER SIDE OF ALL EXPANSION JOINTS OR DEFLECTION JOINTS

MULTI BEAM OR APPROACH SPANS - THE AREAS TO BE WASHED ON MULTI BEAM SPANS OR APPROACH SPANS SHALL INCLUDE THE FOLLOWING:

- ALL DECK JOINTS AND DECK DRAINS
- THE ENTIRE DECK SURFACE, CURB, AND RAILINGS
- THE OUTSIDE AND BOTTOMS OF FASCIA BEAMS
- ALL ABUTMENT AND PIER CAPS
- ALL STRUCTURAL STEEL LOCATED BELOW THE DECK WITHIN 10' LONGITUDINALLY ON EITHER SIDE OF ALL EXPANSION JOINTS OR DEFLECTION JOINTS

**STATE OF ILLINOIS
DEPARTMENT OF TRANSPORTATION
DIVISION OF HIGHWAYS
DISTRICT 6**

EXAMINED AUGUST 11th 2015
Alan C. Wenzel
ENGINEER OF OPERATIONS

EXAMINED August 10 2015
Ron A. Chamberlain
ENGINEER OF PROJECT IMPLEMENTATION

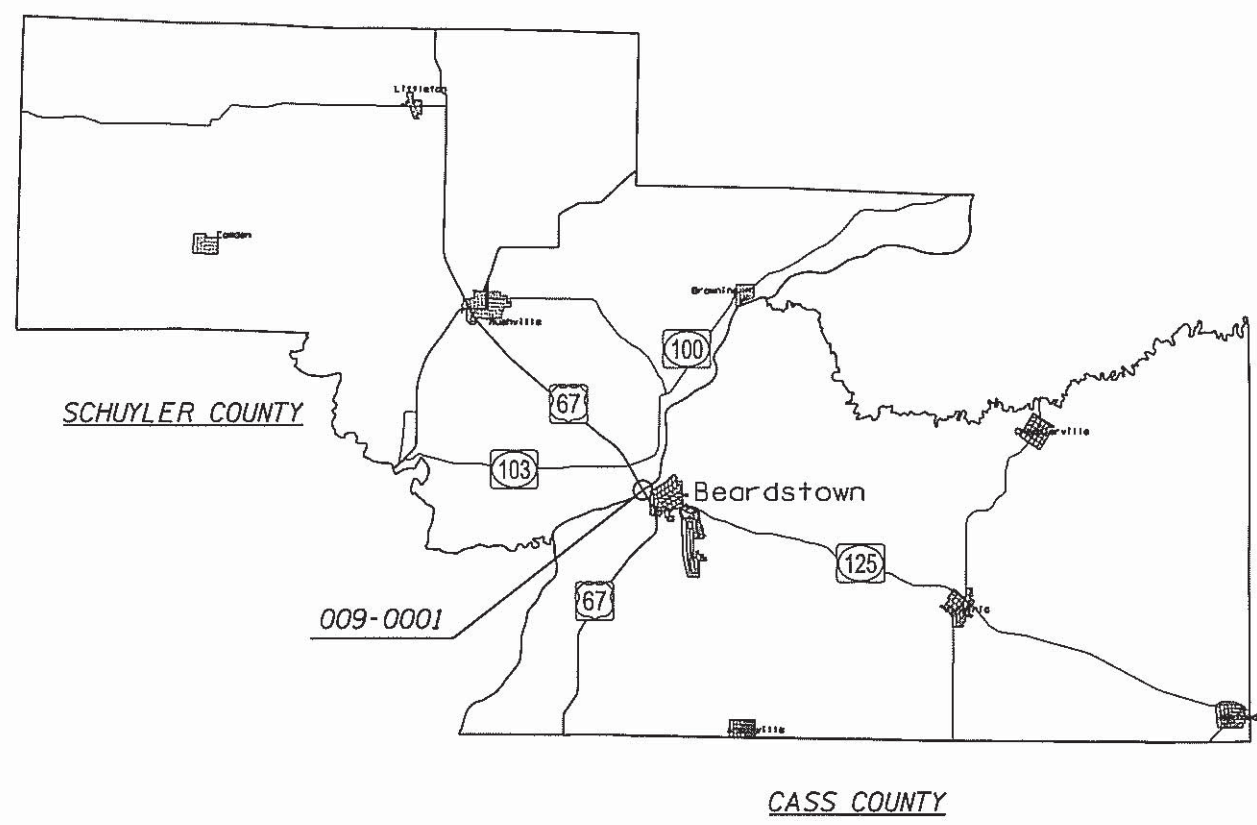
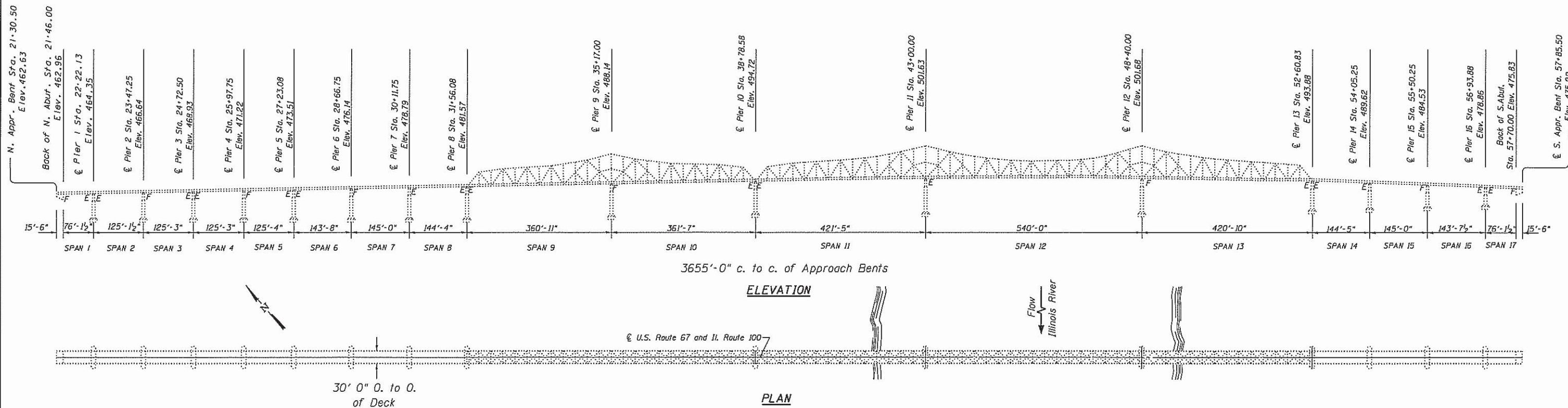
EXAMINED August 13 2015
Jeff P. Meyer
ENGINEER OF PROGRAM DEVELOPMENT

FILE NAME *	USER NAME * dudleybm	DESIGNED -	REVISED -	STATE OF ILLINOIS DEPARTMENT OF TRANSPORTATION	INDEX, STANDARDS, GENERAL NOTES, AND SIGNATURES	F.A.P. RTE.	SECTION	COUNTY	TOTAL SHEETS	SHEET NO.
D:\OPERATIONS\Bridges\Bridgplans_CAD\7	100 - IL River bridge washing 2016\plansheet	DRAWN -	REVISED -			810.75	06 BRIDGE CLEANING 2016-		5	2
Default	PLOT SCALE * 10000.0000' / in.	CHECKED -	REVISED -				* CASS & SCOTT			
	PLOT DATE * 8/14/2015	DATE -	REVISED -			SCALE:	SHEET OF SHEETS	STA.	TO STA.	ILLINOIS FED. AID PROJECT CONTRACT NO. 72105

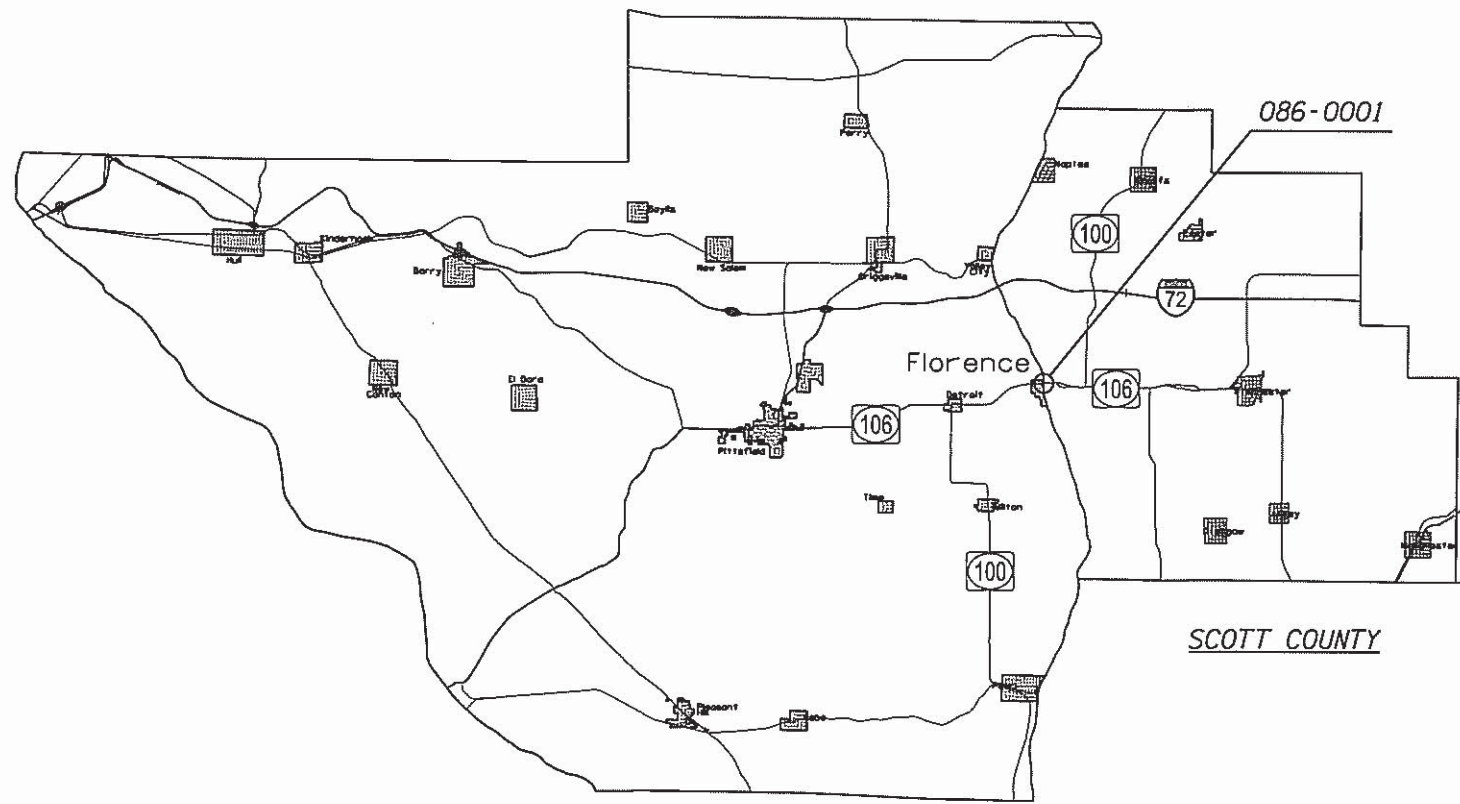
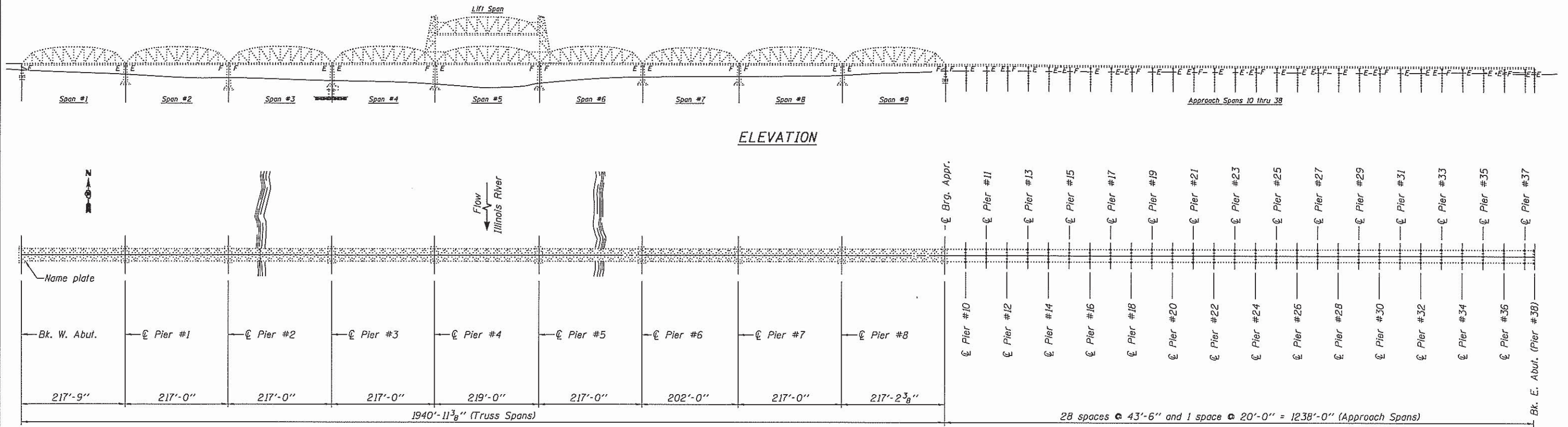
SUMMARY OF QUANTITIES

ITEM NO.	DESCRIPTION	UNIT	TOTAL QTY	100% STATE	100% STATE
				0014	0014
				CASS	SCOTT
59200101	BRIDGE WASHING NO. 1	EACH	1	1	0
59200102	BRIDGE WASHING NO. 2	EACH	1	0	1
67100100	MOBILIZATION	L SUM	1	0.5	0.5
70100450	TRAFFIC CONTROL AND PROTECTION STANDARD 701201	L SUM	1	0.5	0.5

4



FILE NAME =	USER NAME = dudleybm	DESIGNED -	REVISED -	STATE OF ILLINOIS DEPARTMENT OF TRANSPORTATION	SN 009-0001 LOCATION MAP & GENERAL PLAN & ELEVATION			F.A.P. RTE.	SECTION	COUNTY	TOTAL SHEETS	SHEET NO.
D:\OPERATIONS\Bridges\Bridgplans_CAD\72105 - IL River bridge cleaning 2016\plansheet	DRAWN -	REVISED -	REVISED -		310,751	06 BRIDGE CLEANING 2016-		5	4			
Default	PLOT SCALE = 10000.0000' / 1"	CHECKED -	REVISED -		CASS & SCOTT		CONTRACT NO. 72105					
	PLOT DATE = 8/14/2015	DATE -	REVISED -		SCALE:	SHEET	OF SHEETS	STA.	TO STA.	ILLINOIS FED. AID PROJECT		



FILE NAME =	USER NAME = dudleybn	DESIGNED -	REVISED -	STATE OF ILLINOIS DEPARTMENT OF TRANSPORTATION	SN 086-0001 LOCATION MAP & GENERAL PLAN & ELEVATION			F.A.P. RTE.	SECTION	COUNTY	TOTAL SHEETS	SHEET NO.
D:\OPERATIONS\Bridges\Bridgplans.CAD\72105 - IL River bridge washing 2016\plansheet	DRAWN -	REVISED -	REVISED -					310.75	06 BRIDGE CLEANING 2016-1		5	5
Default	PLOT SCALE = 1/8000.0000' / 1" =	CHECKED -	REVISED -					* CASS & SCOTT		CONTRACT NO. 72105		
	PLOT DATE = 8/14/2015	DATE -	REVISED -					ILLINOIS FED. AID PROJECT				