

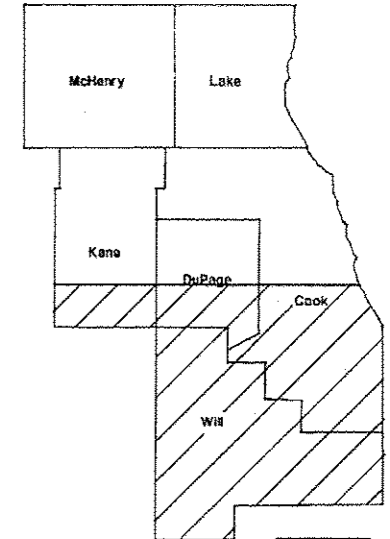
11-06-2015 LETTING ITEM 093

ROUTE	SECTION	COUNTY	TOTAL SHEETS	SHEET NUMBER
VARIOUS	2015-0701	VARIOUS	9	1

CONTRACT 62B53
D-91-054-16

STATE OF ILLINOIS
DEPARTMENT OF TRANSPORTATION
DIVISION OF HIGHWAYS
DISTRICT ONE
PROPOSED HIGHWAY PLANS

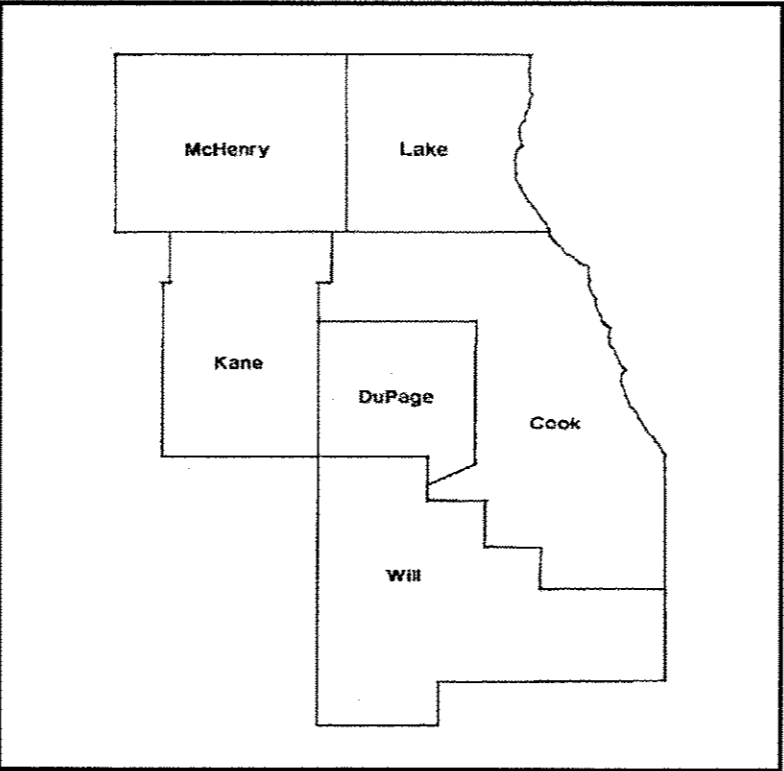
ROUTE: VARIOUS
SECTION 2015-0701
MOWING SOUTH
VARIOUS COUNTIES
C-91-054-16



LOCATION OF IMPROVEMENT INDICATED THUS:



IMPROVEMENT IS IN VARIOUS
LOCATIONS WITHIN DISTRICT
ONE



STATE OF ILLINOIS
DEPARTMENT OF TRANSPORTATION
DIVISION OF HIGHWAYS

SUBMITTED: August 28 2015
John F. ...
DEPUTY DIRECTOR OF HIGHWAYS, REGION ENGINEER

Oct 2 2015
John D. Baranzelli
acting ENGINEER OF DESIGN AND ENVIRONMENT

Oct 2 2015
Omar Osman
DIRECTOR OF HIGHWAYS, CHIEF ENGINEER

**PRINTED BY THE AUTHORITY
OF THE STATE OF ILLINOIS**

J.U.L.I.E.: JOINT UTILITY LOCATION
INFORMATION FOR EXCAVATION
(800) 892-0123 OR 811

DISTRICT ONE BUREAU OF MAINTENANCE: J. STUMPNER
MAINTENANCE LANDSCAPE DESIGNER: T. JACKSON (847) 705-4171

CONTRACT 62B53

ROUTE	SECTION	COUNTY	TOTAL SHEETS	SHEET NUMBER
VARIOUS	2015-0701	VARIOUS	9	2

CONTRACT 62B53

INDEX OF SHEETS

- 1) COVER SHEET
- 2) INDEX OF SHEETS, STATE STANDARDS
- 3) SUMMARY OF QUANTITIES
- 4) SAMPLE WORK ORDER
- 5) MOWING MAP TYPICAL
- 6) TRIMMING DETAIL
- 7) MOWING DETAIL #1-3
- 8) MOWING DETAIL #4-5
- 9) TC-17 TRAFFIC CONTROL DETAIL FOR FREEWAY SHOULDER CLOSURES AND PARTIAL RAMP CLOSURES

STATE STANDARDS

701011 - 04

701101 - 04

701311 - 03

701426 - 07

701901 - 04

ILLINOIS DEPARTMENT OF TRANSPORTATION
MOWING
INDEX OF SHEETS STATE STANDARDS

ROUTE	SECTION	COUNTY	TOTAL SHEETS	SHEET NUMBER
VARIOUS	2015-0701	VARIOUS	9	3

CONTRACT 62B53

SUMMARY OF QUANTITIES


PAY ITEM	DESCRIPTION	UNIT	100% STATE		URBAN 100% STATE	
			CONTRACT MAINT FUND	TOTAL		TOTAL
25000750	MOWING	ACRE	820	820		
67100100	MOBILIZATION	L SUM	1	1		

2

ILLINOIS DEPARTMENT OF TRANSPORTATION
MOWING
SUMMARY OF QUANTITIES

ROUTE	SECTION	COUNTY	TOTAL SHEETS	SHEET NUMBER
VARIOUS	2015-0701	VARIOUS	9	4

CONTRACT 62B53

 Illinois Department of Transportation	Contract Number: _____
	Mowing Work Order Number: _____
	Route: _____

30-Day Completion Work Order

Cook	DuPage	Kane	Work Order Prepared By	Team Section
Lake	McHenry	Will		

Location:

Refer to attached mow maps, which are hereby made a part of this work order (____ sheets)

WORK INCLUDED IN THIS WORK ORDER		
Item	Mow Map Qty	
Mowing 25000750	_____ acres	

AGREEMENT TO ACCURACY OF WORK ORDER QUANTITIES

The Contractor and Engineer hereby agree that when the work is completed essentially to the lines and dimensions given, no further measurement will be required for any of the above items. Payment will be made for the work order quantities shown.

Engineer Signature and Date

Contractor Signature and Date

AUTHORIZATION OF WORK ORDER

Technician Signature

Start Date

Completion Date

CERTIFICATION OF COMPLETION

Contractor Signature

Date

Number of 33 gallon bags filled with litter and debris

ACCEPTANCE OF COMPLETED WORK

I certify that the work order has been completed in conformance with contract requirements.

Resident Engineer/Technician Signature

Date

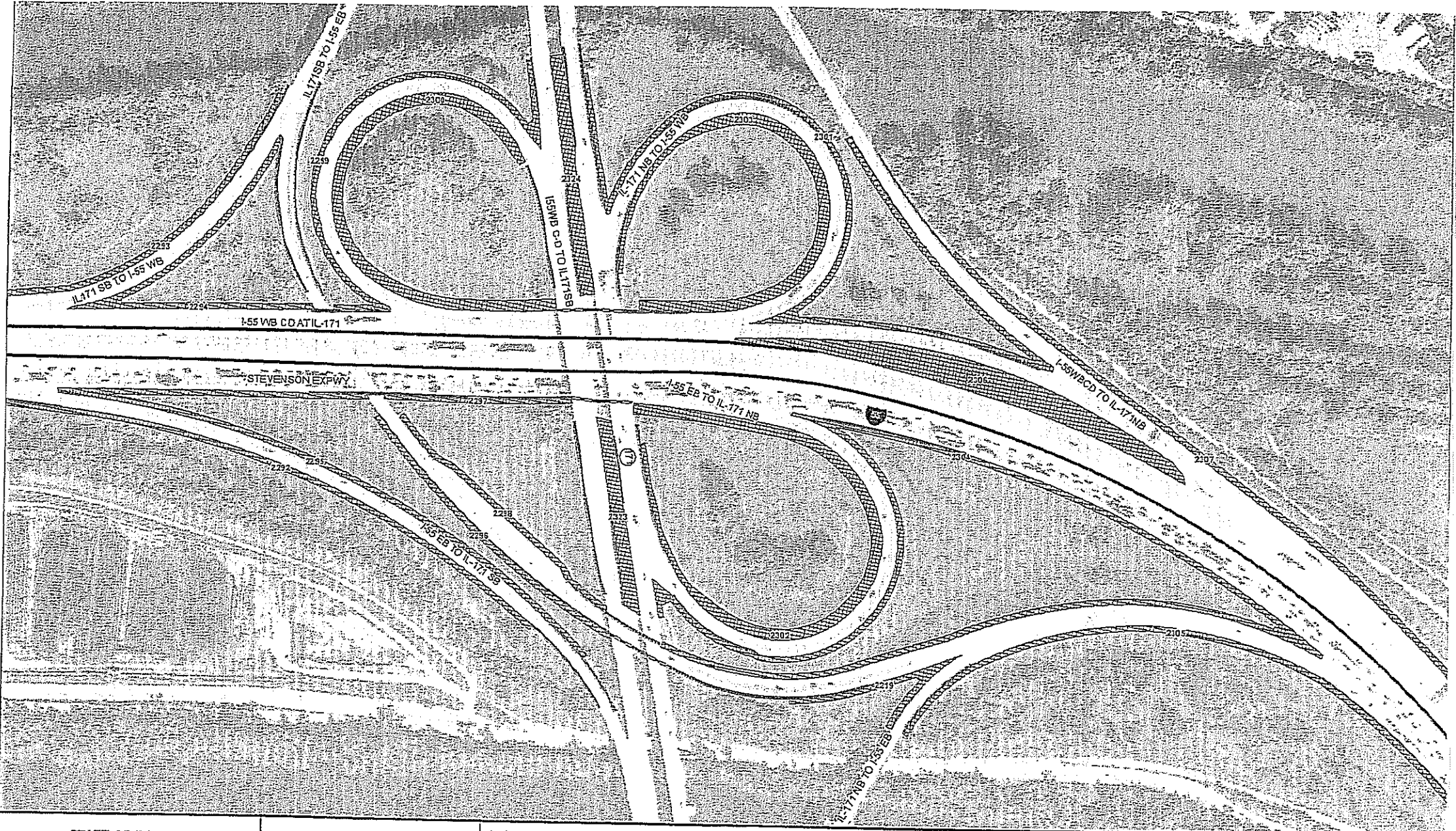
ILLINOIS DEPARTMENT OF TRANSPORTATION

MOWING

SAMPLE WORK ORDER

ROUTE	SECTION	COUNTY	TOTAL SHEETS	SHEET NUMBER
VARIOUS	2015-0701	VARIOUS	9	5

CONTRACT 62B53



STATE OF ILLINOIS DEPARTMENT OF TRANSPORTATION LANDSCAPE MAINTENANCE	0 100 200 Feet		STRUCTURES — Guardrail - - - Noise Abatement Wall = Concrete Barrier Wall - - - Other Wall - - - Fence	STRUCTURES	WEED CONTROL	MOVING Mowing (Acre)	Map Prepared by: Team Section: Route: Panel Number:	Contract #: Work Order #: Sheet #: of

ILLINOIS DEPARTMENT OF TRANSPORTATION

MOWING

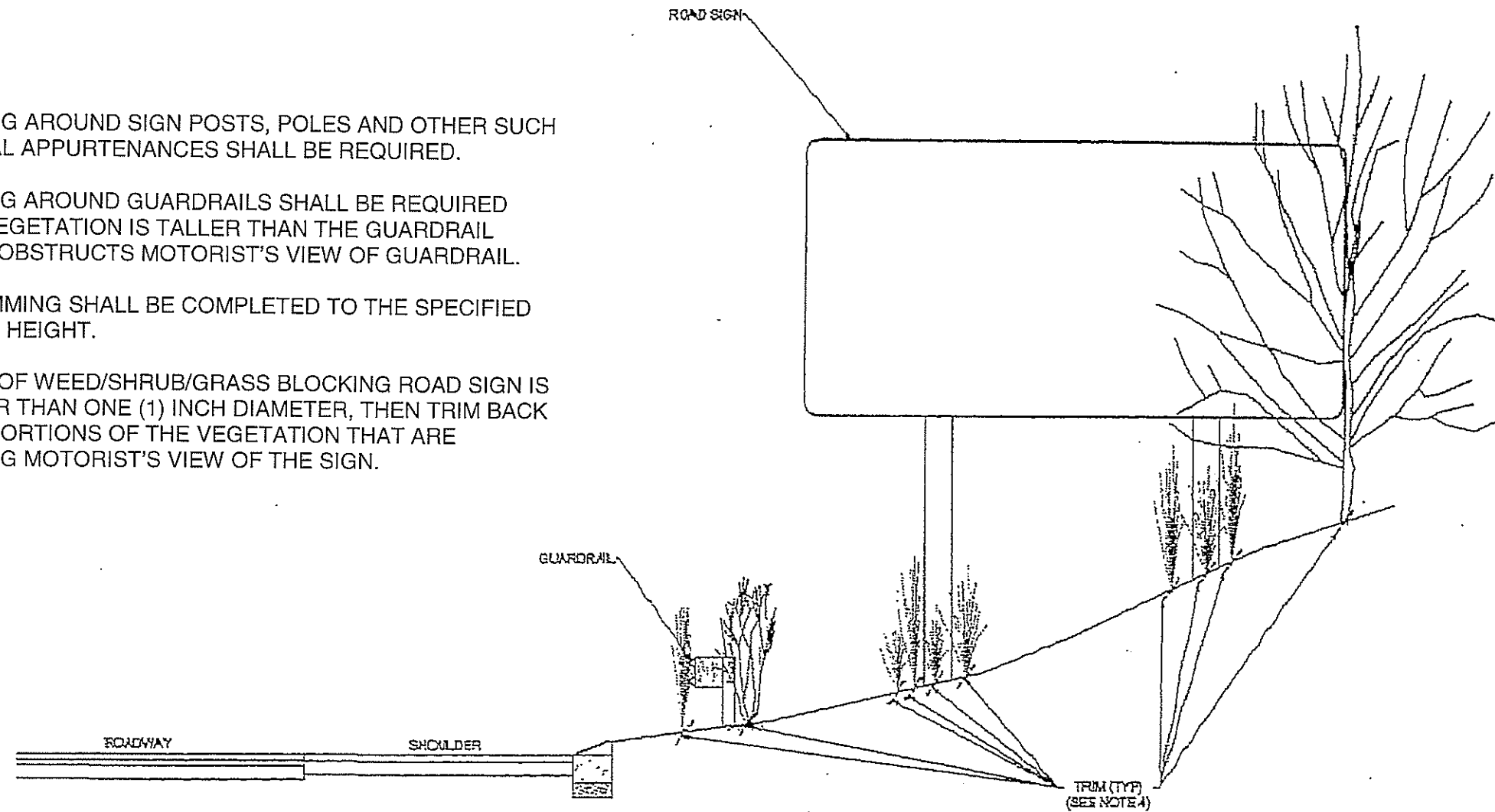
MOWING MAP TYPICAL

ROUTE	SECTION	COUNTY	TOTAL SHEETS	SHEET NUMBER
VARIOUS	2015-0701	VARIOUS	9	6

CONTRACT 62B53

NOTES:

1. TRIMMING AROUND SIGN POSTS, POLES AND OTHER SUCH VERTICAL APPURTENANCES SHALL BE REQUIRED.
2. TRIMMING AROUND GUARDRAILS SHALL BE REQUIRED WHEN VEGETATION IS TALLER THAN THE GUARDRAIL AND/OR OBSTRUCTS MOTORIST'S VIEW OF GUARDRAIL.
3. ALL TRIMMING SHALL BE COMPLETED TO THE SPECIFIED MOWING HEIGHT.
4. IF STEM OF WEED/SHRUB/GRASS BLOCKING ROAD SIGN IS GREATER THAN ONE (1) INCH DIAMETER, THEN TRIM BACK THOSE PORTIONS OF THE VEGETATION THAT ARE BLOCKING MOTORIST'S VIEW OF THE SIGN.

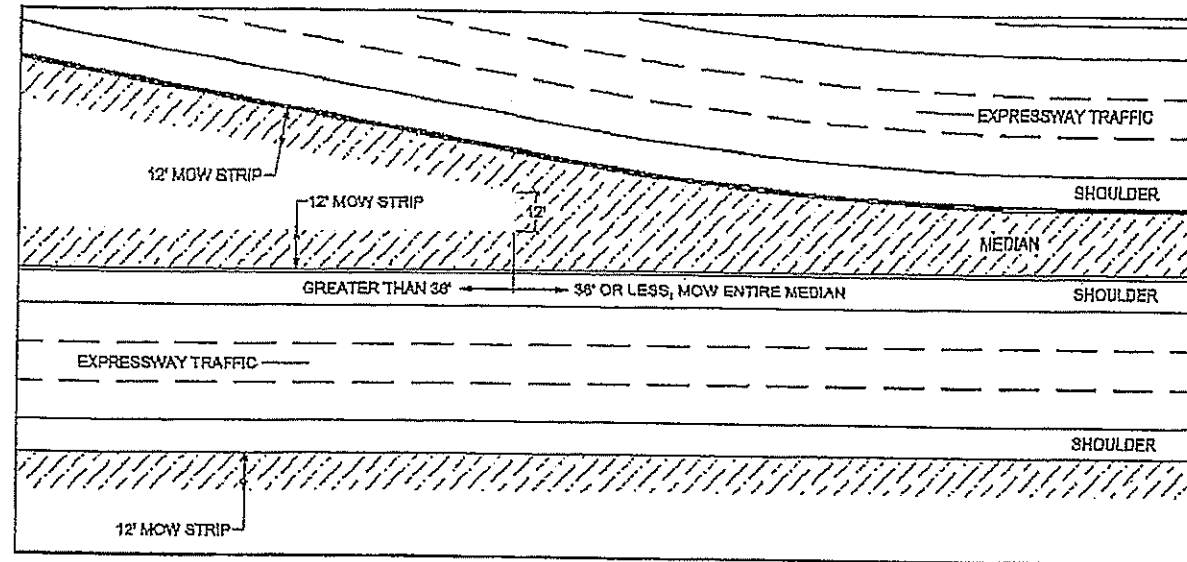


Not to Scale
Mowing Detail
Trimming

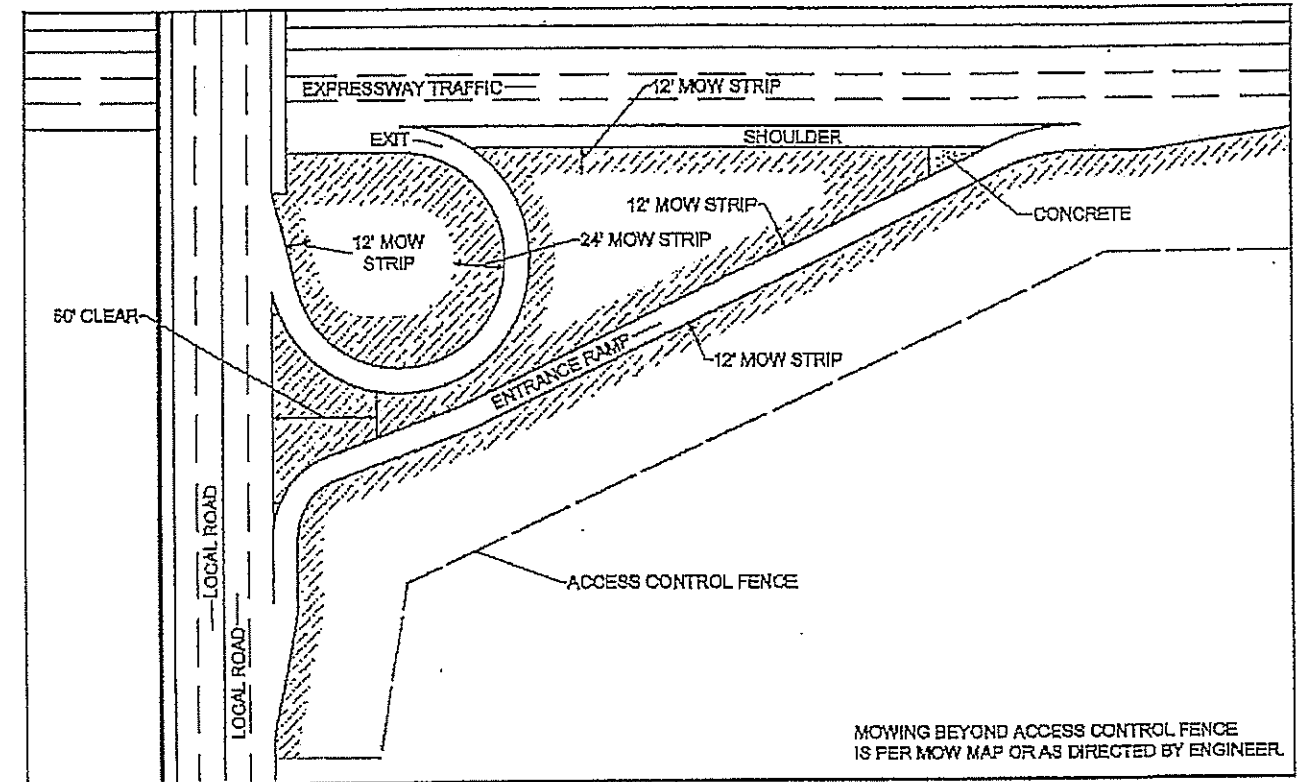
ILLINOIS DEPARTMENT OF TRANSPORTATION
MOWING
TRIMMING DETAIL

ROUTE	SECTION	COUNTY	TOTAL SHEETS	SHEET NUMBER
VARIOUS	2015-0701	VARIOUS	9	7

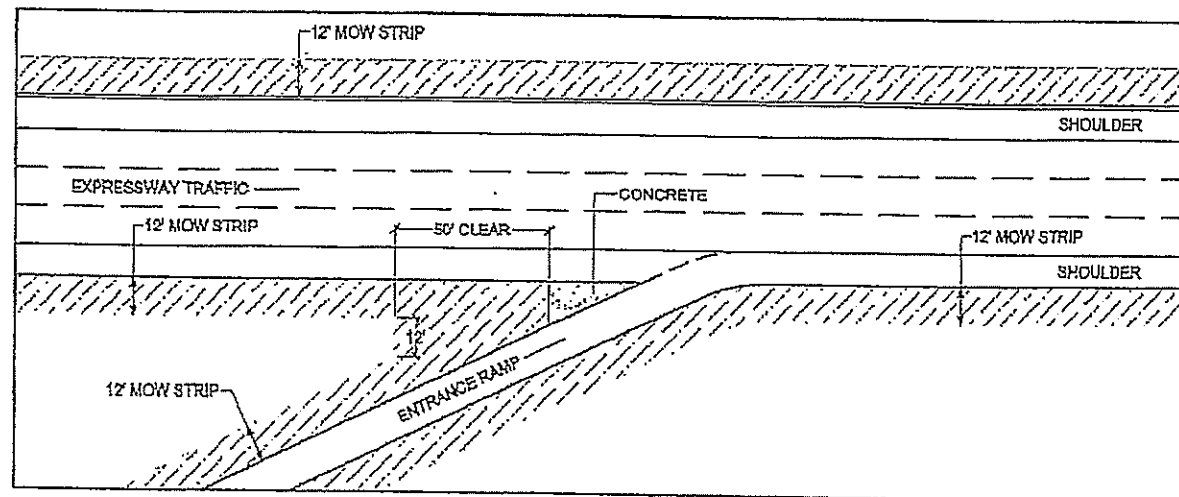
CONTRACT 62B53



Not to Scale
Mowing Detail #1
Medians



Not to Scale
Mowing Detail #2
Circular Ramp and Local Road



Not to Scale
Mowing Detail #3
Straight Merge Ramp

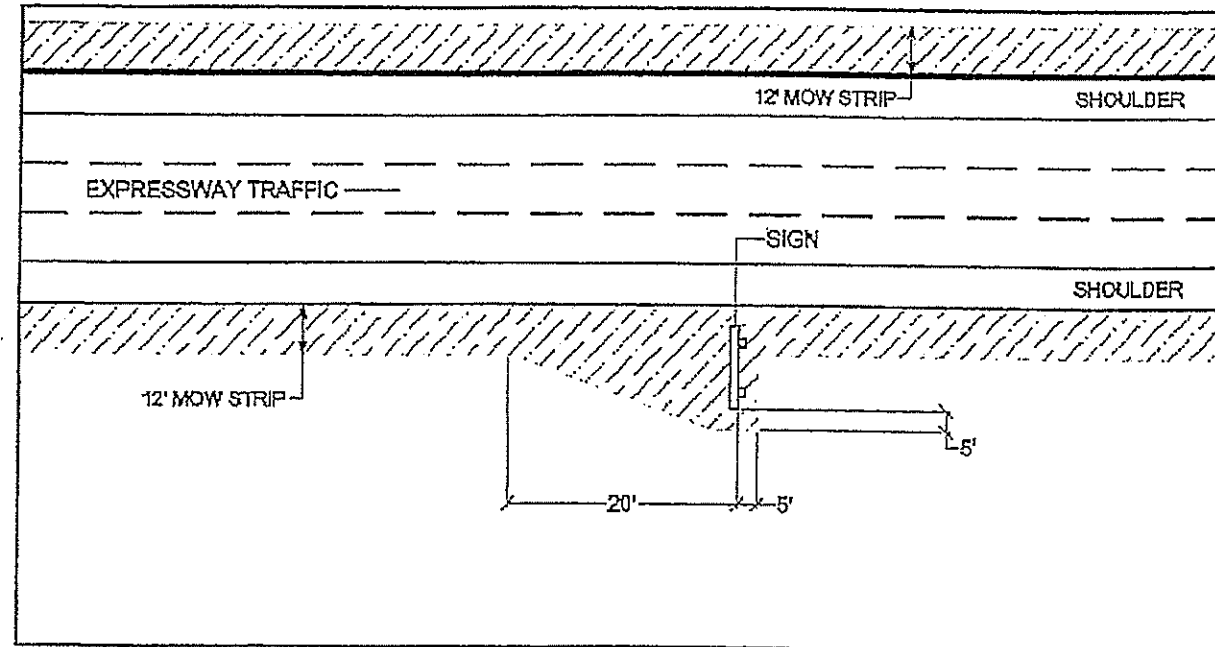
ILLINOIS DEPARTMENT OF TRANSPORTATION

MOWING

MOWING DETAILS #1 #2 & #3

ROUTE	SECTION	COUNTY	TOTAL SHEETS	SHEET NUMBER
VARIOUS	2015-0701	VARIOUS	9	8

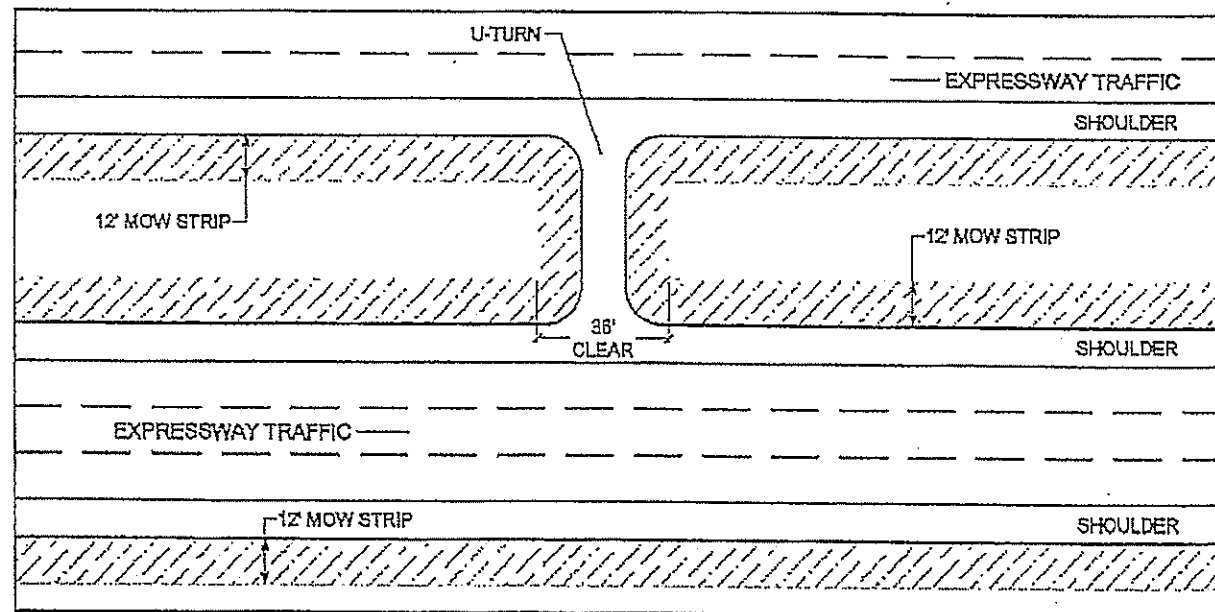
CONTRACT 62B53



Mowing Detail #4

Not to Scale

Roadway Signs



Mowing Detail #5

Not to Scale

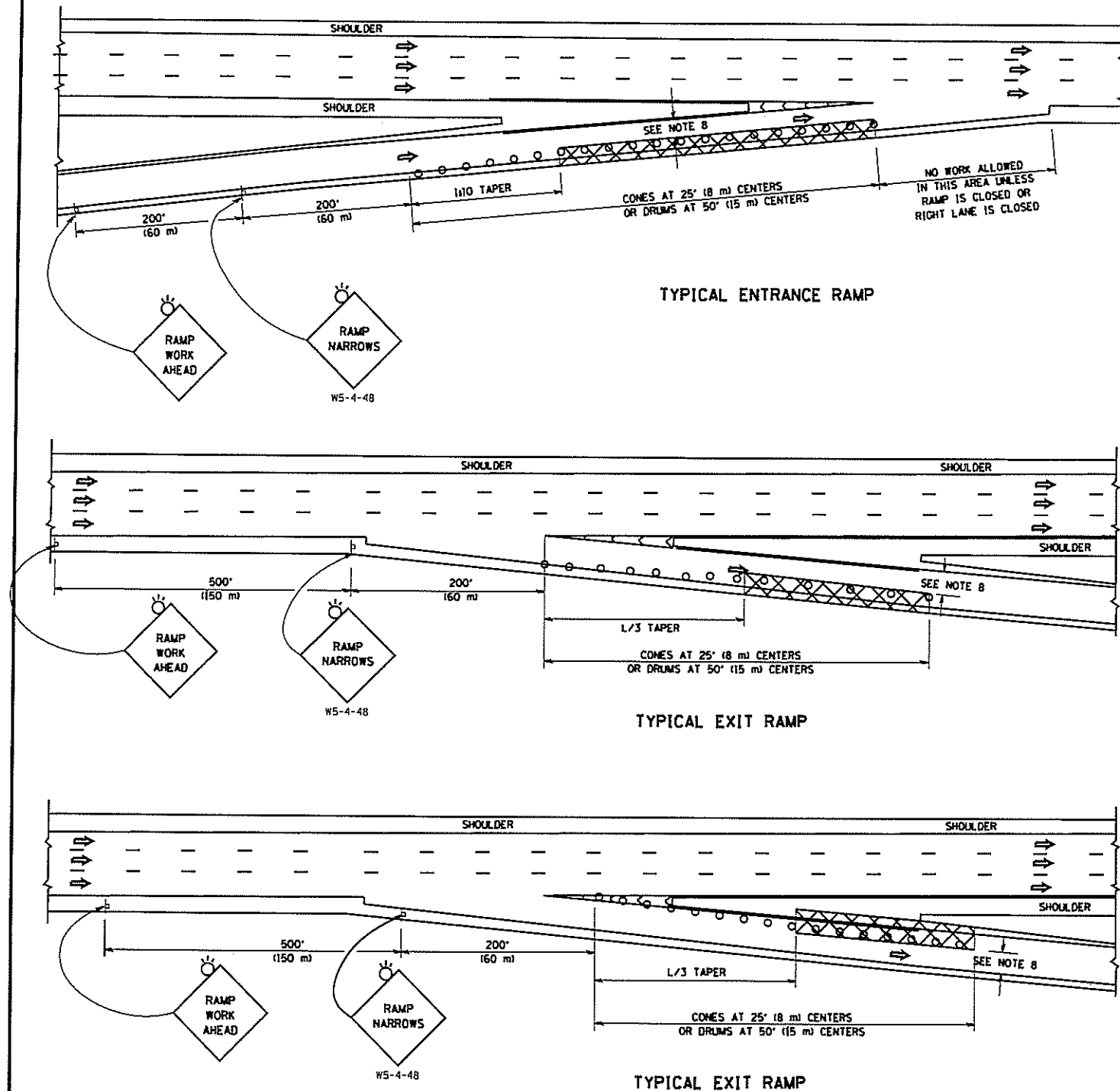
U-Turns

ILLINOIS DEPARTMENT OF TRANSPORTATION

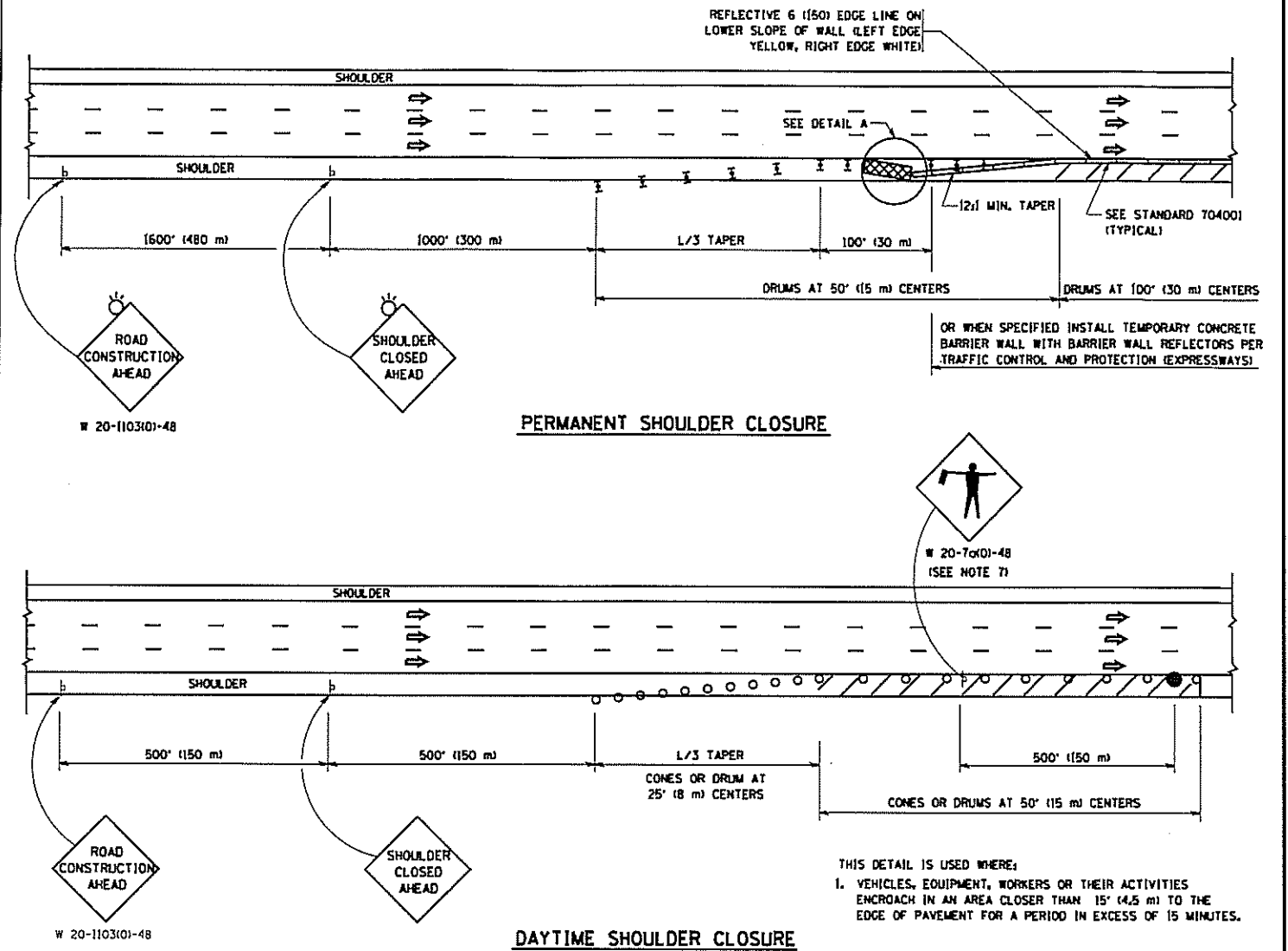
MOWING

MOWING DETAILS #4 & #5

PARTIAL RAMP CLOSURE DETAILS



SHOULDER CLOSURE DETAILS



EDGE OF TRAFFIC LANE

OFFSET 5' (1.5 m) MIN. FOR SAND FOR SAND MODULE ARRAY

ARRAY DESIGN PER MANUFACTURER TO BE NCHRP 350/MASH COMPLIANT.

DETAIL "A"
IMPACT ATTENUATOR, TEMPORARY
(SEE NOTE 5)

SYMBOLS

- ACTIVE WORK AREA
- SIGN ON PORTABLE OR PERMANENT SUPPORT
- FLAGGER WITH CONTROL SIGN
- TYPE II BARRICADE OR DRUM WITH STEADY BURN MONO-DIRECTIONAL LIGHT
- CONE, DRUM OR BARRICADE
- IMPACT ATTENUATOR OF TYPE AND TEST LEVEL SPECIFIED

GENERAL NOTES

1. THE "L" DISTANCE EQUALS:

SPEED LIMIT	FORMULAS
45 mph (80 km/h) OR GREATER:	METRIC ENGLISH
	$L=0.6S(W/S)$ $L=(WXS)$
	$W = \text{WIDTH OF OFFSET IN FEET (METERS)}$
	$S = \text{NORMAL POSTED SPEED MPH (KM/H)}$
2. PLASTIC DRUMS WITH HIGH PERFORMANCE REFLECTIVE SHEETING AND STEADY BURNING LIGHTS ARE REQUIRED FOR ALL NIGHTTIME CLOSURES.
3. ALL SIGNS SHALL BE POST MOUNTED IF THE CLOSURE TIME EXCEEDS FOUR DAYS.
4. FLASHING LIGHTS SHALL BE USED DURING THE HOURS OF DARKNESS AND SHALL BE INSTALLED ABOVE THE FIRST TWO SETS OF SIGNS.
5. THE IMPACT ATTENUATOR, TEMPORARY IS NOT REQUIRED WHEN THE TEMPORARY CONCRETE BARRIER WALL IS PROTECTED BY OR IS TIED INTO THE EXISTING GUARDRAIL. IF OFFSET IS LESS THAN 5 FEET USE NARROW USE TYPE DEVICE TO MEET NCHRP350/MASH.
6. AUTHORIZATION FROM THE DISTRICT'S BUREAU OF TRAFFIC IS REQUIRED FOR ALL FREEWAY CLOSURES.
7. THE FLAGGER AND FLAGGER SIGN ARE REQUIRED AT THE ABOVE WORK SITES WHEN:
 - a. FOUR OR MORE WORK VEHICLES ENTER THE TRAFFIC LANES IN A ONE HOUR PERIOD.
 - b. THE WORK ACTIVITY REQUIRES FREQUENT ENCRANCHMENT INTO THE LANE OPEN TO TRAFFIC.
 THE FLAGGER SHALL BE STATIONED APPROXIMATELY 100' (30 m) TO 200' (60 m) IN ADVANCE OF THE WORKERS.
8. 12' MIN. WIDTH TANGENT SECTION
16' MIN. WIDTH CURVE SECTION.

FILE NAME: c:\pwwork\pwwork\1103101\1103101.tcl7.dwg

USER NAME: jeyss

DESIGNED -

DRAWN - D.W.S.

CHECKED -

DATE - 11-96

REVISED - J.A.F. 12-06

REVISED - S.P.B. 01-07

REVISED - S.P.B. 12-09

REVISED - M.D. 06-13

STATE OF ILLINOIS
DEPARTMENT OF TRANSPORTATION

TRAFFIC CONTROL DETAILS FOR FREEWAY
SHOULDER CLOSURES AND PARTIAL RAMP CLOSURES

SCALE: NONE

SHEET NO. 1 OF 1 SHEETS

STA. TO STA.

F.A. RTE.	SECTION	COUNTY	TOTAL SHEETS	SHEET NO.
	2015-0702 VAR	VAR	9	9
TC-17		CONTRACT NO. 62B53		
FED. ROAD DIST. NO. 1 ILLINOIS FED. AID PROJECT				