

11-06-2020 LETTING ITEM 070

FOR INDEX OF SHEETS, SEE SHEET NO. 2
FOR INDEX OF HIGHWAY STANDARDS, SEE SHEET NO. 2

STATE OF ILLINOIS
DEPARTMENT OF TRANSPORTATION

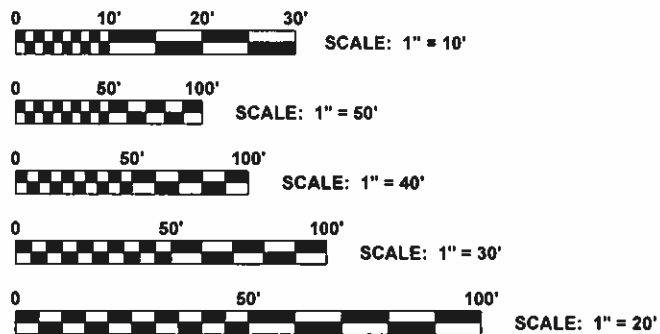
**PLANS FOR PROPOSED
FEDERAL AID HIGHWAY**

**BROADWAY AVENUE COMMUTER IMPROVEMENTS RTA/CMAQ
SECTION NO.: 17-00132-00-MS
PROJECT NO.: 4BD5(727)
VILLAGE OF MELROSE PARK
COOK COUNTY
C-91-234-19**

TRAFFIC DATA
ADT (2014) =
POSTED SPEED LIMIT = 25 MPH
DESIGN SPEED LIMIT = 25 MPH

DESIGN DESIGNATION
MINOR COLLECTOR

PROJECT LOCATED IN THE
VILLAGE OF MELROSE PARK



FULL SIZE PLANS HAVE BEEN PREPARED USING STANDARD ENGINEERING SCALES. REDUCED SIZED PLANS WILL NOT CONFORM TO STANDARD SCALES. IN MAKING MEASUREMENTS ON REDUCED PLANS, THE ABOVE SCALES MAY BE USED.

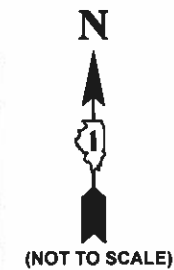
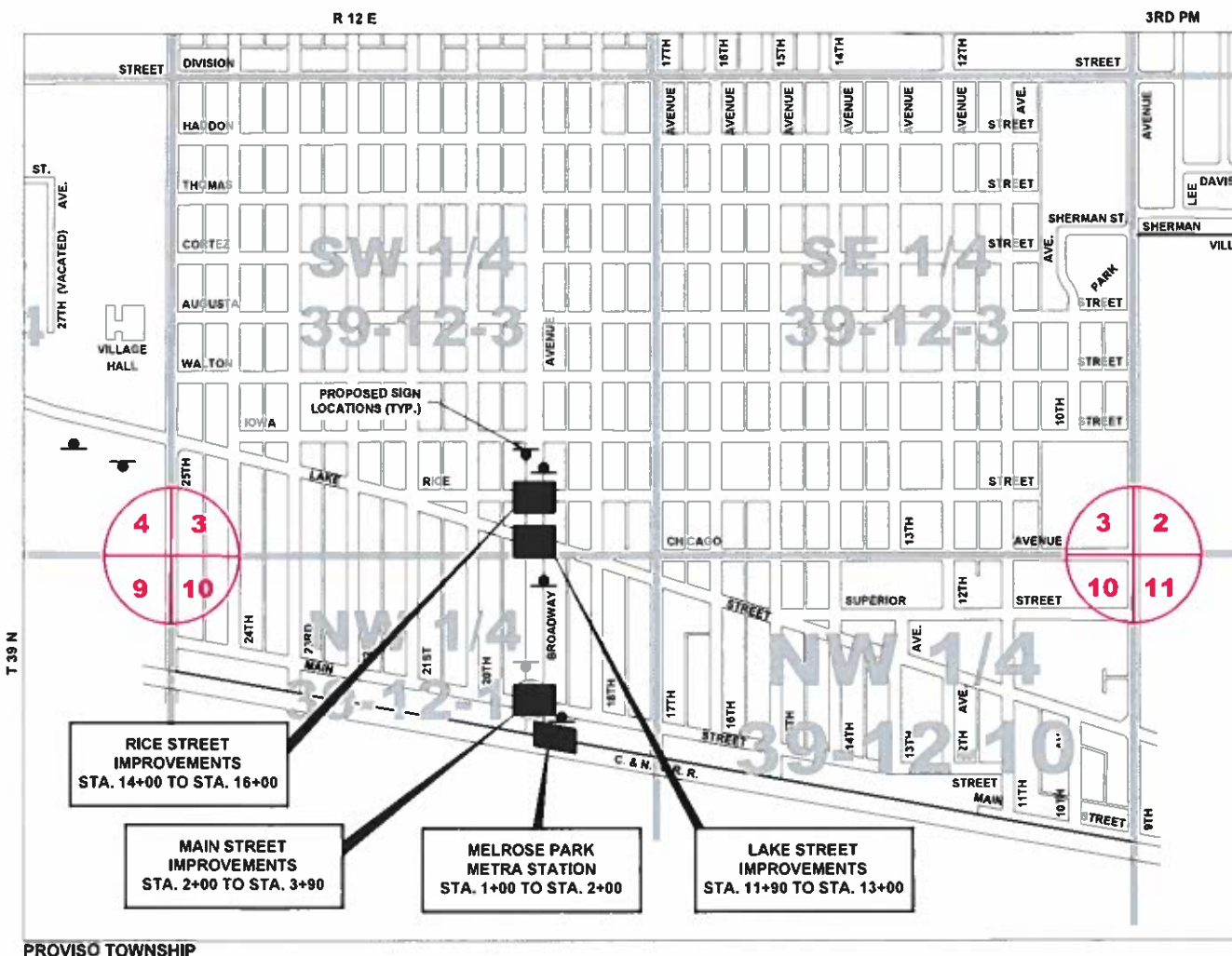


CONTRACT NO. 61G77

FAU ROUTE NO.	SECTION	COUNTY	TOTAL SHEETS	SHEET NO.
	17-00132-00-MS	COOK	25	1
ILLINOIS PROJECT		4BD5(727)		
CONTRACT NO.		61G77		



LOCATION OF SECTION INDICATED THUS:



(NOT TO SCALE)

STATE OF ILLINOIS
ILLINOIS DEPARTMENT OF TRANSPORTATION
DIVISION OF HIGHWAYS

APPROVED: July 15th 2020
Chad M. Cooper
VILLAGE OF MELROSE PARK, PRESIDENT

PASSED: Aug 20 2020
Chris...
DISTRICT 1 ENGINEER OF LOCAL ROADS & STREETS

RELEASED FOR BID
BASED ON LIMITED
REVIEW: August 20 2020
Chris...
REGIONAL ENGINEER

PRINTED BY THE AUTHORITY OF THE STATE OF ILLINOIS



SIGNED: Stephen B. Clark
DATE: 07/10/20 LICENSE EXPIRES: 11-30-21

HANCOCK ENGINEERING | 100+ Years of Excellence

- Civil Engineers
- Municipal Consultants
- Established 1911

9933 Roosevelt Road
Westchester, IL, 60154-2780
Phone: 708-865-0300
www.ehancock.com

- AREA OF IMPROVEMENT
GROSS LENGTH OF IMPROVEMENT = 1161 FT = 0.22 MI
NET LENGTH OF IMPROVEMENT = 1161 FT = 0.22 MI

DRAWING NO. W-Projects-by-Village-Melrose-Park-66019247 - Broadway Commuter Improvements_CMAQ-RTA-Cover_2020.dwg Jul 21, 2020 2:39pm FEDERAL AID PROGRAM ENGINEER: CARMEN E. RAMOS P.E., SCHAUMBURG, IL

INDEX OF SHEETS

SHEET NO.	DESCRIPTION
1	COVER SHEET, LOCATION MAP
2	INDEX OF SHEETS, AND IDOT HIGHWAY STANDARDS
3	GENERAL NOTES
4	MWRD GENERAL NOTES
5	SUMMARY OF QUANTITIES
6-7	TYPICAL SECTIONS
8-11	REMOVAL PLANS
12-15	PROPOSED PLANS
16	EROSION CONTROL PLANS
17-22	DETAILS
23	TRAFFIC CONTROL AND PROTECTION FOR SIDE ROADS, INTERSECTIONS, AND DRIVEWAYS (TC-10)
24	D-1 TYP. PAVEMENT MARKINGS (TC-13)
25	ARTERIAL ROAD INFORMATION SIGN (TC-22)

IDOT HIGHWAY STANDARDS

STANDARD NO.	DESCRIPTION
000001-07	STANDARD SYMBOLS, ABBREVIATIONS AND PATTERNS
280001-07	TEMPORARY EROSION CONTROL SYSTEMS
424001-11	PERPENDICULAR CURB RAMPS FOR SIDEWALKS
701006-05	OFF-ROAD OPERATIONS, 2L, 2W, 15' (4.5M) TO 24" (600 MM) FROM PAVEMENT EDGE
701011-04	OFF-ROAD MOVING OPERATIONS, 2L, 2W, DAY ONLY
701301-04	LANE CLOSURE, 2L, 2W, SHORT TIME OPERATIONS
701311-03	LANE CLOSURE, 2L, 2W, MOVING OPERATIONS DAY ONLY
701501-06	URBAN LANE CLOSURE, 2-LANE, 2-WAY, UNDIVIDED
701502-09	URBAN LANE CLOSURE, 2L, 2W, WITH BIDIRECTIONAL LEFT TURN LANE
701701-10	URBAN LANE CLOSURE, MULTILANE INTERSECTION
701801-06	SIDEWALK, CORNER, OR CROSSWALK CLOSURE
701901-08	TRAFFIC CONTROL DEVICES

Drawing file: W:\Projects_by_Village\Metrose Park\60019242 - Broadway Commuter Improvements_CIM0-RTA\Index.dwg Aug 20, 2020 - 9:45am



♦ Civil Engineers
 ♦ Municipal Consultants
 ♦ Established 1911

7700 Roosevelt Road
 Westchester, IL 60154-2700
 Phone: 708.665.0000
 www.hancock.com

DESIGNED	- -	REVISED	- -
DRAWN	DMM, SFB	REVISED	- -
CHECKED	- -	REVISED	- -
DATE	7-10-20	REVISED	- -

STATE OF ILLINOIS
DEPARTMENT OF TRANSPORTATION

INDEX OF SHEETS, AND IDOT HIGHWAY STANDARDS

SCALE: NONE SHEET NO. 1 OF 1 SHEETS STA. - TO STA. -

F.A.U. RTE.	SECTION	COUNTY	TOTAL SHEETS	SHEET NO.
-	17-00132-00-MS	COOK	25	2
CONTRACT NO. 61G77				
FED. ROAD DIST. NO. 1 ILLINOIS				FED. AID PROJECT

E.H.E. PROJECT NO. 600-19-24201

GENERAL NOTES

STANDARDS

ANY REFERENCE TO STANDARDS THROUGHOUT THE PLANS OR SPECIAL PROVISIONS SHALL BE INTERPRETED TO BE THE LATEST STANDARD OF THE ILLINOIS DEPARTMENT OF TRANSPORTATION AS SHOWN ON THE INDEX OF SHEETS IN THE PLANS. ALL CONSTRUCTION SHALL BE DONE IN ACCORDANCE WITH THE STANDARD SPECIFICATIONS FOR ROAD AND BRIDGE CONSTRUCTION ADOPTED APRIL 1, 2016. THE LATEST EDITION OF THE "ILLINOIS MANUAL ON UNIFORM TRAFFIC CONTROL DEVICES FOR STREETS AND HIGHWAYS," "THE STANDARD SPECIFICATIONS FOR WATER AND SEWER MAIN CONSTRUCTION IN ILLINOIS" JULY 2014 7TH EDITION, AND THE "DETAILS" IN THE PLANS AND THE "SPECIAL PROVISIONS" INCLUDED IN THE CONTRACT DOCUMENTS.

UNDERGROUND UTILITIES

BEFORE STARTING ANY EXCAVATION, THE CONTRACTOR SHALL CALL "JULIE" AT 811 FOR FIELD LOCATIONS OF BURIED ELECTRICAL, TELEPHONE AND GAS FACILITIES. (48 HOURS NOTIFICATION IS REQUIRED).

THE LOCATIONS OF THE UNDERGROUND UTILITIES IF SHOWN ON THE PLANS HAVE BEEN OBTAINED BY FIELD SURVEYS AND SEARCHES OF AVAILABLE RECORDS. IT IS BELIEVED THAT DATA IS ESSENTIALLY CORRECT, BUT THE VILLAGE OF BROOKFIELD, THE ILLINOIS DEPARTMENT OF TRANSPORTATION AND/OR OTHER OFFICES AND AGENCIES ASSOCIATED WITH THE DEVELOPMENT OF THESE PLANS DO NOT GUARANTEE THEIR ACCURACY OR COMPLETENESS. THE CONTRACTOR WILL BE REQUIRED TO VERIFY THE EXACT LOCATION OF EACH FACILITY WITH THE UTILITY COMPANY, AND SHALL TAKE DUE CARE IN ALL PHASES OF THE CONSTRUCTION TO PROTECT ANY SUCH FACILITIES WHICH MAY BE AFFECTED BY THE WORK. ANY DAMAGE TO EXISTING UTILITIES SHALL BE REPAIRED.

THE CONTRACTOR SHALL COORDINATE CONSTRUCTION ACTIVITIES WITH UTILITY COMPANIES AND THE VILLAGE OF MELROSE PARK.

TREE PROTECTION

EXISTING TREES AT PARKWAYS OUTSIDE OF CONSTRUCTION LIMITS SHALL REMAIN DURING THE CONSTRUCTION. ANY DAMAGE TO EXISTING TREES BY THE CONTRACTOR SHALL BE REPLACED IN KIND BY THE CONTRACTOR.

PAVEMENT MARKINGS

THE RESIDENT ENGINEER SHALL CONTACT EMAD AL HUSSEINI, ARTERIAL TRAFFIC FIELD ENGINEER, AT EMAD.ALHUSSEINI@ILLINOIS.GOV AT LEAST 2 WEEKS PRIOR TO THE PLACEMENT OF PERMANENT PAVEMENT MARKINGS.

OPEN EXCAVATIONS

THE CONTRACTOR SHALL NOT LEAVE ANY EXCAVATION NECESSARY FOR PAVEMENT PATCHES OR STRUCTURE ADJUSTMENTS OPEN OVERNIGHT. THE CONTRACTOR SHALL BE RESPONSIBLE FOR COMPLETELY BACKFILLING OR INSTALLING A PLATE OVER ALL EXCAVATIONS AT THE END OF EACH DAY.

CONCRETE BREAKERS

WHEN REMOVING PAVEMENT AND/OR OTHER STRUCTURES, THE CONTRACTOR SHALL NOT USE ANY TYPE OF CONCRETE BREAKERS SUCH AS DROP HAMMERS, THAT MIGHT DAMAGE UNDERGROUND PUBLIC OR PRIVATE UTILITIES.

SAW CUTTING

THE CONTRACTOR SHALL SAW CUT ASPHALT PAVEMENT AS INDICATED ON THE PLANS TO SEPARATE THE EXISTING PAVEMENT TO BE REMOVED BY APPROVED MEANS OR AN APPROVED CONCRETE SAW TO A DEPTH AS DIRECTED BY THE ENGINEER. SUITABLE GUIDELINES OR DEVICES SHALL BE USED TO ASSURE CUTTING A NEAT, STRAIGHT LINE AS SHOWN ON THE PLANS. CARE SHALL BE TAKEN BY THE CONTRACTOR AS NOT TO DAMAGE THE REMAINING PAVEMENT DIRECTLY ADJACENT TO THE PAVEMENT TO BE REMOVED. ANY DAMAGE TO THE EXISTING PAVEMENT RESULTING FROM PAVEMENT REMOVAL OPERATIONS SHALL BE REPAIRED.

FIELD OFFICE

THE CONTRACTOR WILL NOT BE ALLOWED TO SET UP A YARD OR FIELD OFFICE ON STATE OR VILLAGE PROPERTY WITHOUT WRITTEN PERMISSION FROM THE ENGINEER.

Drawing file: W:\Projects_by_Village\Melrose Park\60019242 - Broadway Commuter Improvements_CMAQ-RTA\Details.dwg Jul 09, 2020 - 9:47am



♦ Civil Engineers
 ♦ Municipal Consultants
 ♦ Established 1911
 1999 Roosevelt Road
 Wheeling, IL 60154-2700
 Phone: 708.665.0300
 www.hancock.com

DESIGNED	- -	REVISED	-
DRAWN	- DMM	REVISED	-
CHECKED	- -	REVISED	-
DATE	- 7-10-20	REVISED	-

**STATE OF ILLINOIS
DEPARTMENT OF TRANSPORTATION**

GENERAL NOTES

SCALE: NONE SHEET NO. 1 OF 1 SHEETS STA. - TO STA. -

F.A.U. RTE.	SECTION	COUNTY	TOTAL SHEETS	SHEET NO.
-	17-00132-00-MS	COOK	25	3
FED. ROAD DIST. NO. 1 ILLINOIS			CONTRACT NO. 61G77	
FED. AID PROJECT				

E.H.E. PROJECT NO. 600-19-24201

M.W.R.D.G.C. GENERAL NOTES

A. REFERENCED SPECIFICATIONS

- ALL CONSTRUCTION SHALL BE IN ACCORDANCE WITH THE APPLICABLE SECTIONS OF THE FOLLOWING, EXCEPT AS MODIFIED HEREIN OR ON THE PLANS:
 - * STANDARD SPECIFICATIONS FOR ROAD AND BRIDGE CONSTRUCTION (LATEST EDITION), BY THE ILLINOIS DEPARTMENT OF TRANSPORTATION (IDOT SS) FOR ALL IMPROVEMENTS EXCEPT SANITARY SEWER AND WATER MAIN CONSTRUCTION;
 - * STANDARD SPECIFICATIONS FOR WATER AND SEWER MAIN CONSTRUCTION IN ILLINOIS, LATEST EDITION (SSWS) FOR SANITARY SEWER AND WATER MAIN CONSTRUCTION;
 - * VILLAGE OF SCHILLER PARK MUNICIPAL CODE;
 - * THE METROPOLITAN WATER RECLAMATION DISTRICT OF GREATER CHICAGO (MWRD) WATERSHED MANAGEMENT ORDINANCE AND TECHNICAL GUIDANCE MANUAL;
 - * IN CASE OF CONFLICT BETWEEN THE APPLICABLE ORDINANCES NOTED, THE MORE STRINGENT SHALL TAKE PRECEDENCE AND SHALL CONTROL ALL CONSTRUCTION.

B. NOTIFICATIONS

- THE MWRD LOCAL SEWER SYSTEMS SECTION FIELD OFFICE MUST BE NOTIFIED AT LEAST TWO (2) WORKING DAYS PRIOR TO THE COMMENCEMENT OF ANY WORK (CALL 708-588-4055).
- THE VILLAGE OF SCHILLER PARK ENGINEERING DEPARTMENT MUST BE NOTIFIED AT LEAST 24 HOURS PRIOR TO THE START OF CONSTRUCTION AND PRIOR TO EACH PHASE OF WORK. CONTRACTOR SHALL DETERMINE ITEMS REQUIRING INSPECTION PRIOR TO START OF CONSTRUCTION OR EACH WORK PHASE.
- THE CONTRACTOR SHALL NOTIFY ALL UTILITY COMPANIES PRIOR TO BEGINNING CONSTRUCTION FOR THE EXACT LOCATIONS OF UTILITIES AND FOR THEIR PROTECTION DURING CONSTRUCTION. IF EXISTING UTILITIES ARE ENCOUNTERED THAT CONFLICT IN LOCATION WITH NEW CONSTRUCTION, IMMEDIATELY NOTIFY THE ENGINEER SO THAT THE CONFLICT CAN BE RESOLVED. CALL J.U.L.I.E. AT 1-800-892-0123.

b. GENERAL NOTES

- ALL ELEVATIONS SHOWN ON PLANS REFERENCE THE NORTH AMERICAN VERTICAL DATUM OF 1988 (NAVD88).
- MWRD, THE MUNICIPALITY AND THE OWNER OR OWNER'S REPRESENTATIVE SHALL HAVE THE AUTHORITY TO INSPECT, APPROVE, AND REJECT THE CONSTRUCTION IMPROVEMENTS.
- THE CONTRACTOR(S) SHALL INDEMNIFY THE OWNER, ENGINEER, MUNICIPALITY, MWRD, AND THEIR AGENTS, ETC., FROM ALL LIABILITY INVOLVED WITH THE CONSTRUCTION, INSTALLATION OR TESTING OF THIS WORK ON THE PROJECT.
- THE PROPOSED IMPROVEMENTS MUST BE CONSTRUCTED IN ACCORDANCE WITH THE ENGINEERING PLANS AS APPROVED BY MWRD AND THE MUNICIPALITY UNLESS CHANGES ARE APPROVED BY MWRD, THE MUNICIPALITY, OR AUTHORIZED AGENT. THE CONSTRUCTION DETAILS, AS PRESENTED ON THE PLANS, MUST BE FOLLOWED. PROPER CONSTRUCTION TECHNIQUES MUST BE FOLLOWED ON THE IMPROVEMENTS INDICATED ON THE PLANS.
- THE LOCATION OF VARIOUS UNDERGROUND UTILITIES WHICH ARE SHOWN ON THE PLANS ARE FOR INFORMATION ONLY AND REPRESENT THE BEST KNOWLEDGE OF THE ENGINEER. VERIFY LOCATIONS AND ELEVATIONS PRIOR TO BEGINNING THE CONSTRUCTION OPERATIONS.
- ANY EXISTING PAVEMENT, SIDEWALK, DRIVEWAY, ETC., DAMAGED DURING CONSTRUCTION OPERATIONS AND NOT CALLED FOR TO BE REMOVED SHALL BE REPLACED AT THE EXPENSE OF THE CONTRACTOR.
- MATERIAL AND COMPACTION TESTING SHALL BE PERFORMED IN ACCORDANCE WITH THE REQUIREMENTS OF THE MUNICIPALITY, MWRD, AND OWNER.
- THE UNDERGROUND CONTRACTOR SHALL MAKE ALL NECESSARY ARRANGEMENT TO NOTIFY ALL INSPECTION AGENCIES.
- ALL NEW AND EXISTING UTILITY STRUCTURES ON SITE AND IN AREAS DISTURBED DURING CONSTRUCTION SHALL BE ADJUSTED TO FINISH GRADE PRIOR TO FINAL INSPECTION.
- RECORD DRAWINGS SHALL BE KEPT BY THE CONTRACTOR AND SUBMITTED TO THE ENGINEER AS SOON AS UNDERGROUND IMPROVEMENTS ARE COMPLETED. FINAL PAYMENTS TO THE CONTRACTOR SHALL BE HELD UNTIL THEY ARE RECEIVED. ANY CHANGES IN LENGTH, LOCATION OR ALIGNMENT SHALL BE SHOWN IN RED. ALL WYES OR BENDS SHALL BE LOCATED FROM THE DOWNSTREAM MANHOLE. ALL VALVES, B-BOXES, TEES OR BENDS SHALL BE TIED TO A FIRE HYDRANT.

d. SANITARY SEWER

- THE CONTRACTOR SHALL TAKE MEASURES TO PREVENT ANY POLLUTED WATER, SUCH AS GROUND AND SURFACE WATER, FROM ENTERING THE EXISTING SANITARY SEWERS.
- A WATER-TIGHT PLUG SHALL BE INSTALLED IN THE DOWNSTREAM SEWER PIPE AT THE POINT OF SEWER CONNECTION PRIOR TO COMMENCING ANY SEWER CONSTRUCTION. THE PLUG SHALL REMAIN IN PLACE UNTIL REMOVAL IS AUTHORIZED BY THE MUNICIPALITY AND/OR MWRD AFTER THE SEWERS HAVE BEEN TESTED AND ACCEPTED.
- DISCHARGING ANY UNPOLLUTED WATER INTO THE SANITARY SEWER SYSTEM FOR THE PURPOSE OF SEWER FLUSHING OF LINES FOR THE DEFLECTION TEST SHALL BE PROHIBITED WITHOUT PRIOR APPROVAL FROM THE MUNICIPALITY OR MWRD.
- ALL SANITARY SEWER CONSTRUCTION SHALL BE IN ACCORDANCE WITH THE STANDARD SPECIFICATIONS FOR WATER AND SEWER MAIN CONSTRUCTION IN ILLINOIS (LATEST EDITION).
- ALL FLOOR DRAINS SHALL DISCHARGE TO THE SANITARY SEWER SYSTEM.
- ALL DOWNSPOUTS AND FOOTING DRAINS SHALL DISCHARGE TO THE STORM SEWER SYSTEM.
- ALL SANITARY SEWER PIPE MATERIALS AND JOINTS (AND STORM SEWER PIPE MATERIALS AND JOINTS IN A COMBINED SEWER AREA) SHALL CONFORM TO THE FOLLOWING:

PIPE MATERIAL	PIPE SPECIFICATIONS	JOINT SPECIFICATIONS
VITRIFIED CLAY PIPE	ASTM C-700	ASTM C-425
REINFORCED CONCRETE SEWER PIPE	ASTM C-76	ASTM C-443
CAST IRON SOIL PIPE	ASTM A-74	ASTM C-564
DUCTILE IRON PIPE	ANSI A21.51	ANSI A21.11
POLYVINYL CHLORIDE (PVC) PIPE		
6-INCH TO 15-INCH DIAMETER SDR 26	ASTM D-3034	ASTM D-3212
18-INCH TO 27-INCH DIAMETER F/DY=46	ASTM F-679	ASTM D-3212
HIGH DENSITY POLYETHYLENE (HDPE FUSION)	ASTM D-3350	ASTM D-3261, F-2620 (HEAT FUSION)
(GASKETED)	ASTM D-3035	ASTM D-3212, F-477
WATER MAIN QUALITY PVC		
4-INCH TO 36-INCH	ASTM D-2241	ASTM D-3139
4-INCH TO 12-INCH	AWWA C900	ASTM D-3139
14-INCH TO 48-INCH	AWWA C905	ASTM D-3139

THE FOLLOWING MATERIALS ARE ALLOWED ON A QUALIFIED BASIS SUBJECT TO DISTRICT REVIEW AND APPROVAL PRIOR TO PERMIT ISSUANCE. A SPECIAL CONDITION WILL BE ADDED TO THE PERMIT WHEN THE PIPE MATERIAL BELOW IS USED FOR SEWER CONSTRUCTION OR A CONNECTION IS MADE.

PIPE MATERIAL	PIPE SPECIFICATIONS	JOINT SPECIFICATIONS
POLYPROPYLENE (PP) PIPE		
12-INCH TO 24-INCH DOUBLE WALL	ASTM F-2736	D-3212, F-477
30-INCH TO 60-INCH TRIPLE WALL	ASTM F-2764	D-3212, F-477

- ALL SANITARY SEWER CONSTRUCTION (AND STORM SEWER CONSTRUCTION IN COMBINED SEWER AREAS), REQUIRES STONE BEDDING WITH STONE 1/4" TO 1" IN SIZE, WITH MINIMUM BEDDING THICKNESS EQUAL TO 1/4 THE OUTSIDE DIAMETER OF THE SEWER PIPE, BUT NOT LESS THAN FOUR (4) INCHES NOR MORE THAN EIGHT (8) INCHES. MATERIAL SHALL BE CA-7, CA-11 OR CA-13 AND SHALL BE EXTENDED AT LEAST 12" ABOVE THE TOP OF THE PIPE WHEN USING PVC.
- NON-SHEAR FLEXIBLE-TYPE COUPLINGS SHALL BE USED IN THE CONNECTION OF SEWER PIPES OF DISSIMILAR PIPE MATERIALS.
- ALL MANHOLES SHALL BE PROVIDED WITH BOLTED, WATERTIGHT COVERS. SANITARY LIDS SHALL BE CONSTRUCTED WITH A CONCEALED PICKHOLE AND WATERTIGHT GASKET WITH THE WORD "SANITARY" CAST INTO THE LID.
- WHEN CONNECTING TO AN EXISTING SEWER MAIN BY MEANS OTHER THAN AN EXISTING WYE, TEE, OR AN EXISTING MANHOLE, ONE OF THE FOLLOWING METHODS SHALL BE USED:
 - A CIRCULAR SAW-CUT OF SEWER MAIN BY PROPER TOOLS ("SHEWER-TAP" MACHINE OR SIMILAR) AND PROPER INSTALLATION OF HUB-WYE SADDLE OR HUB-TEE SADDLE.
 - REMOVE AN ENTIRE SECTION OF PIPE (BREAKING ONLY THE TOP OF ONE BELL) AND REPLACE WITH A WYE OR TEE BRANCH SECTION.
 - WITH PIPE CUTTER, NEATLY AND ACCURATELY CUT OUT DESIRED LENGTH OF PIPE FOR INSERTION OF PROPER FITTING, USING "BAND SEAL" OR SIMILAR COUPLINGS TO HOLD IT FIRMLY IN PLACE.
- WHENEVER A SANITARY/COMBINED SEWER CROSSES UNDER A WATERMAIN, THE MINIMUM VERTICAL DISTANCE FROM THE TOP OF THE SEWER TO THE BOTTOM OF THE WATERMAIN SHALL BE 18 INCHES. FURTHERMORE, A MINIMUM HORIZONTAL DISTANCE OF 10 FEET BETWEEN SANITARY/COMBINED SEWERS AND WATERMAINS SHALL BE MAINTAINED UNLESS: THE SEWER IS LAID IN A SEPARATE TRENCH, KEEPING A MINIMUM 18" VERTICAL SEPARATION; OR THE SEWER IS LAID IN THE SAME TRENCH WITH THE WATERMAIN LOCATED AT THE OPPOSITE SIDE ON A BENCH OF UNDISTURBED EARTH, KEEPING A MINIMUM 18" VERTICAL SEPARATION. IF EITHER THE VERTICAL OR HORIZONTAL DISTANCES DESCRIBED CANNOT BE MAINTAINED, OR THE SEWER CROSSES ABOVE THE WATERMAIN, THE SEWER SHALL BE CONSTRUCTED TO WATERMAIN STANDARDS OR IT SHALL BE ENCASED WITH A WATERMAIN QUALITY CARRIER PIPE WITH THE ENDS SEALED.
- ALL EXISTING SEPTIC SYSTEMS SHALL BE ABANDONED. ABANDONED TANKS SHALL BE FILLED WITH GRANULAR MATERIAL OR REMOVED.
- ALL SANITARY MANHOLES, (AND STORM MANHOLES IN COMBINED SEWER AREAS), SHALL HAVE A MINIMUM INSIDE DIAMETER OF 48 INCHES, AND SHALL BE CAST IN PLACE OR PRE-CAST REINFORCED CONCRETE.
- ALL SANITARY MANHOLES, (AND STORM MANHOLES IN COMBINED SEWER AREAS), SHALL HAVE PRECAST "RUBBER BOOTS" THAT CONFORM TO ASTM C-923 FOR ALL PIPE CONNECTIONS. PRECAST SECTIONS SHALL CONSIST OF MODIFIED GROOVE TONGUE AND RUBBER GASKET TYPE JOINTS.
- ALL ABANDONED SANITARY SEWERS SHALL BE PLUGGED AT BOTH ENDS WITH AT LEAST 2 FEET LONG NON-SHRINK CONCRETE OR MORTAR PLUG.
- EXCEPT FOR FOUNDATION/FOOTING DRAINS PROVIDED TO PROTECT BUILDINGS, OR PERFORATED PIPES ASSOCIATED WITH VOLUME CONTROL FACILITIES, DRAIN TILES/FIELD TILES/UNDERDRAINS/PERFORATED PIPES ARE NOT ALLOWED TO BE CONNECTED TO OR TRIBUTARY TO COMBINED SEWERS, SANITARY SEWERS, OR STORM SEWERS TRIBUTARY TO COMBINED SEWERS IN COMBINED SEWER AREAS. CONSTRUCTION OF NEW FACILITIES OF THIS TYPE IS PROHIBITED; AND ALL EXISTING DRAIN TILES AND PERFORATED PIPES ENCOUNTERED WITHIN THE PROJECT AREA SHALL BE PLUGGED OR REMOVED, AND SHALL NOT BE CONNECTED TO COMBINED SEWERS, SANITARY SEWERS, OR STORM SEWERS TRIBUTARY TO COMBINED SEWERS.
- A BACKFLOW PREVENTER IS REQUIRED FOR ALL DETENTION BASINS TRIBUTARY TO COMBINED SEWERS. REQUIRED BACKFLOW PREVENTERS SHALL BE INSPECTED AND EXERCISED ANNUALLY BY THE PROPERTY OWNER TO ENSURE PROPER OPERATION, AND ANY NECESSARY MAINTENANCES SHALL BE PERFORMED TO ENSURE FUNCTIONALITY. IN THE EVENT OF A SEWER SURCHARGE INTO AN OPEN DETENTION BASIN TRIBUTARY TO COMBINED SEWERS, THE PERMITTEE SHALL ENSURE THAT CLEAN UP AND WASH OUT OF SEWAGE TAKES PLACE WITHIN 48 HOURS OF THE STORM EVENT.

e. EROSION AND SEDIMENT CONTROL

- THE CONTRACTOR SHALL INSTALL THE EROSION AND SEDIMENT CONTROL DEVICES AS SHOWN ON THE APPROVED EROSION AND SEDIMENT CONTROL PLAN.
- EROSION AND SEDIMENT CONTROL PRACTICES SHALL BE FUNCTIONAL PRIOR TO HYDROLOGIC DISTURBANCE OF THE SITE.
- ALL DESIGN CRITERIA, SPECIFICATIONS, AND INSTALLATION OF EROSION AND SEDIMENT CONTROL PRACTICES SHALL BE IN ACCORDANCE WITH THE ILLINOIS URBAN MANUAL.
- A COPY OF THE APPROVED EROSION AND SEDIMENT CONTROL PLAN SHALL BE MAINTAINED ON THE SITE AT ALL TIMES.
- INSPECTIONS AND DOCUMENTATION SHALL BE PERFORMED, AT A MINIMUM:
 - UPON COMPLETION OF INITIAL EROSION AND SEDIMENT CONTROL MEASURES, PRIOR TO ANY SOIL DISTURBANCE.
 - ONCE EVERY SEVEN (7) CALENDAR DAYS AND WITHIN 24 HOURS OF THE END OF A STORM EVENT WITH GREATER THAN 0.5 INCH OF RAINFALL OR LIQUID EQUIVALENT PRECIPITATION.
- SOIL DISTURBANCE SHALL BE CONDUCTED IN SUCH A MANNER AS TO MINIMIZE EROSION. IF STRIPPING, CLEARING, GRADING, OR LANDSCAPING ARE TO BE DONE IN PHASES, THE CO-PERMITTEE SHALL PLAN FOR APPROPRIATE SOIL EROSION AND SEDIMENT CONTROL MEASURES.
- A STABILIZED MAT OF CRUSHED STONE MEETING THE STANDARDS OF THE ILLINOIS URBAN MANUAL SHALL BE INSTALLED AT ANY POINT WHERE TRAFFIC WILL BE ENTERING OR LEAVING A CONSTRUCTION SITE. SEDIMENT OR SOIL REACHING AN IMPROVED PUBLIC RIGHT-OF-WAY, STREET, ALLEY OR PARKING AREA SHALL BE REMOVED BY SCRAPING OR STREET CLEANING AS ACCUMULATIONS WARRANT AND TRANSPORTED TO A CONTROLLED SEDIMENT DISPOSAL AREA.
- CONCRETE WASHOUT FACILITIES SHALL BE CONSTRUCTED IN ACCORDANCE WITH THE ILLINOIS URBAN MANUAL AND SHALL BE INSTALLED PRIOR TO ANY ON SITE CONSTRUCTION ACTIVITIES INVOLVING CONCRETE.
- MORTAR WASHOUT FACILITIES SHALL BE CONSTRUCTED IN ADDITION TO CONCRETE WASHOUT FACILITIES FOR ANY BRICK AND MORTAR BUILDING ENVELOPE CONSTRUCTION ACTIVITIES.
- TEMPORARY DIVERSIONS SHALL BE CONSTRUCTED AS NECESSARY TO DIRECT ALL RUNOFF FROM HYDROLOGICALLY DISTURBED AREAS TO AN APPROPRIATE SEDIMENT TRAP OR BASIN. VOLUME CONTROL FACILITIES SHALL NOT BE USED AS TEMPORARY SEDIMENT BASINS.
- DISTURBED AREAS OF THE SITE WHERE CONSTRUCTION ACTIVITIES HAVE TEMPORARILY OR PERMANENTLY CEASED SHALL BE STABILIZED WITH TEMPORARY OR PERMANENT MEASURES WITHIN SEVEN (7) DAYS.
- ALL FLOOD PROTECTION AREAS AND VOLUME CONTROL FACILITIES SHALL, AT A MINIMUM, BE PROTECTED WITH A DOUBLE-ROW OF SILT FENCE (OR EQUIVALENT).
- VOLUME CONTROL FACILITIES SHALL NOT BE CONSTRUCTED UNTIL ALL OF THE CONTRIBUTING DRAINAGE AREA HAS BEEN STABILIZED.
- SOIL STOCKPILES SHALL, AT A MINIMUM, BE PROTECTED WITH PERIMETER SEDIMENT CONTROLS. SOIL STOCKPILES SHALL NOT BE PLACED IN FLOOD PROTECTION AREAS OR THEIR BUFFERS.
- EARTHEN EMBANKMENT SIDE SLOPES SHALL BE STABILIZED WITH APPROPRIATE EROSION CONTROL BLANKET.
- STORM SEWERS THAT ARE OR WILL BE FUNCTIONING DURING CONSTRUCTION SHALL BE PROTECTED BY APPROPRIATE SEDIMENT CONTROL MEASURES.
- THE CONTRACTOR SHALL EITHER REMOVE OR REPLACE ANY EXISTING DRAIN TILES AND INCORPORATE THEM INTO THE DRAINAGE PLAN FOR THE DEVELOPMENT. DRAIN TILES CANNOT BE TRIBUTARY TO A SANITARY OR COMBINED SEWER. DRAIN TILES ALLOWED IN COMBINED SEWER AREA FOR GREEN INFRASTRUCTURE PRACTICES.
- IF DEWATERING SERVICES ARE USED, ADJOINING PROPERTIES AND DISCHARGE LOCATIONS SHALL BE PROTECTED FROM EROSION AND SEDIMENTATION. DEWATERING SYSTEMS SHOULD BE INSPECTED DAILY DURING OPERATIONAL PERIODS. THE SITE INSPECTOR MUST BE PRESENT AT THE COMMENCEMENT OF DEWATERING ACTIVITIES.
- THE CONTRACTOR SHALL BE RESPONSIBLE FOR TRENCH DEWATERING AND EXCAVATION FOR THE INSTALLATION OF SANITARY SEWERS, STORM SEWERS, WATERMAINS AS WELL AS THEIR SERVICES AND OTHER APPURTENANCES. ANY TRENCH DEWATERING, WHICH CONTAINS SEDIMENT SHALL PASS THROUGH A SEDIMENT SETTLING POND OR EQUALLY EFFECTIVE SEDIMENT CONTROL DEVICE. ALTERNATIVES MAY INCLUDE DEWATERING INTO A SUMP PIT, FILTER BAG OR EXISTING VEGETATED UPSLOPE AREA. SEDIMENT LADEN WATERS SHALL NOT BE DISCHARGED TO WATERWAYS, FLOOD PROTECTION AREAS OR THE COMBINED SEWER SYSTEM.
- ALL PERMANENT EROSION CONTROL PRACTICES SHALL BE INITIATED WITHIN SEVEN (7) DAYS FOLLOWING THE COMPLETION OF SOIL DISTURBING ACTIVITIES.
- ALL EROSION AND SEDIMENT CONTROL MEASURES SHALL BE MAINTAINED AND REPAIRED AS NEEDED ON A YEAR-ROUND BASIS DURING CONSTRUCTION AND ANY PERIODS OF CONSTRUCTION SHUTDOWN UNTIL PERMANENT STABILIZATION IS ACHIEVED.
- ALL TEMPORARY EROSION AND SEDIMENT CONTROL MEASURES SHALL BE REMOVED WITHIN THIRTY (30) DAYS AFTER PERMANENT SITE STABILIZATION.
- THE EROSION AND SEDIMENT CONTROL MEASURES SHOWN ON THE PLANS ARE THE MINIMUM REQUIREMENTS. ADDITIONAL MEASURES MAY BE REQUIRED, AS DIRECTED BY THE ENGINEER, SITE INSPECTOR, OR MWRD.

Drawing file: W:\Projects_by_Village\Metrose Park\60019242 - Broadway Commuter Improvements_CMAQ-FTA_Details.dwg Jul 09, 2020 - 9:45am



Civil Engineers
Municipal Consultants
Established 1911

7700 Roosevelt Road
 Westchester, IL 60154-2700
 Phone: 708.665.0300
 www.hancock.com

DESIGNED --	REVISED --
DRAWN -- DMM	REVISED --
CHECKED --	REVISED --
DATE -- 7-10-20	REVISED --

STATE OF ILLINOIS
DEPARTMENT OF TRANSPORTATION

MWRD GENERAL NOTES

SCALE: NONE SHEET NO. 1 OF 1 SHEETS STA. - TO STA. -

F.A.U. RTE.	SECTION	COUNTY	TOTAL SHEETS	SHEET NO.
-	17-00132-00-MS	COOK	25	4
CONTRACT NO. 61G77				
FED. ROAD DIST. NO. 1 ILLINOIS FED. AID PROJECT				

SUMMARY OF QUANTITIES

S.P.	S.I.	Code No.	Item	Unit	Total Quantity	Const. Type Code 0021 80%Federal 20%Local
		20200100	EARTH EXCAVATION	CU YD	25	25
		20800150	TRENCH BACKFILL	CU YD	15	15
		21101615	TOPSOIL FURNISH AND PLACE, 4"	SQYD	200	200
		25200110	SODDING, SALT TOLERANT	SQYD	200	200
		28000510	INLET FILTERS	EACH	5	5
		35101600	AGGREGATE BASE COURSE, TYPE B 4"	SQYD	40	40
		40600290	BITUMINOUS MATERIALS (TACK COAT)	POUND	470	470
		40603080	HOT-MIX ASPHALT BINDER COURSE, IL- 19.0, N50	TON	145	145
		40604060	HOT-MIX ASPHALT SURFACE COURSE, IL-9.5, MIX "D", N50	TON	90	90
		42400200	PORTLAND CEMENT CONCRETE SIDEWALK 5 INCH	SQ FT	6,000	6,000
		42400800	DETECTABLE WARNINGS	SQFT	80	80
		44000100	PAVEMENT REMOVAL	SQYD	350	350
		44000500	COMBINATION CURB AND GUTTER REMOVAL	FOOT	470	470
		44000600	SIDEWALK REMOVAL	SQFT	2,800	2,800
		60257900	MANHOLES TO BE RECONSTRUCTED	EACH	1	1
		60500040	REMOVING MANHOLES	EACH	1	1
		60500060	REMOVING INLETS	EACH	2	2
		60604100	COMBINATION CONCRETE CURB AND GUTTER, TYPE B-6.12 (MODIFIED)	FOOT	570	570
	*	66900200	NON-SPECIAL WASTE DISPOSAL	CU YD	40	40
	*	66900205	SPECIAL WASTE DISPOSAL	CU YD	15	15
	*	66900210	HAZARDOUS WASTE DISPOSAL	CU YD	15	15
	*	66900530	SOIL DISPOSAL ANALYSIS	EACH	1	1
	*	66901001	REGULATED SUBSTANCE PRE-CONSTRUCTION PLAN	L SUM	1	1
	*	66901003	REGULATED SUBSTANCE FINAL CONSTRUCTION REPORT	L SUM	1	1

S.P.	S.I.	Code No.	Item	Unit	Total Quantity	Const. Type Code 0021 80%Federal 20%Local
	*	66901006	REGULATED SUBSTANCE MONITORING	CAL DA	4	4
		67100100	MOBILIZATION	L SUM	1	1
		70102620	TRAFFIC CONTROL AND PROTECTION, STANDARD 701501	L SUM	1	1
		70102622	TRAFFIC CONTROL AND PROTECTION, STANDARD 701502	L SUM	1	1
		70102640	TRAFFIC CONTROL AND PROTECTION, STANDARD 701801	L SUM	1	1
		70103815	TRAFFIC CONTROL SURVEILLANCE	CAL DA	4	4
	*	78000400	THERMOPLASTIC PAVEMENT MARKING- LINE 6"	FOOT	40	40
	*	78000600	THERMOPLASTIC PAVEMENT MARKING- LINE 12"	FOOT	1,500	1,500
	*	78000650	THERMOPLASTIC PAVEMENT MARKING- LINE 24"	FOOT	160	160
		X0321309	CONCRETE PAD	SQ YD	40	40
		X0322917	PROPOSED STORM SEWER CONNECTION TO EXISTING MANHOLE	EACH	1	1
		X0327979	PAVEMENT MARKING REMOVAL - GRINDING	SQFT	850	850
		X4401198	HOT-MIX ASPHALT SURFACE REMOVAL, VARIABLE DEPTH	SQ YD	1,030	1,030
		X6022402	MAHOLES, TYPE A, 4' DIAMETER, TYPE I FRAME, CLOSED LID, SPECIAL	EACH	1	1
		X6022805	CATCH BASINS, TYPE A, 4' DIAMETER, TYPE I FRAME, OPEN LID, SPECIAL	EACH	3	3
	*	X7200105	SIGN PANEL - TYPE 1 (SPECIAL)	SQFT	30	30
		XX002258	STRUCTURES TO BE ADJUSTED	EACH	4	4
		XX003689	BUS SHELTER	EACH	2	2
	*	XX007021	PEDESTRIAN ACTIVATED CROSSWALK WARNING SYSTEM	EACH	1	1
	*	XX008269	WAYFINDING SIGN	EACH	5	5
		XX008686	BIKE SHELTER	EACH	1	1
		Z0003855	BICYCLE RACKS	EACH	4	4
		Z0030850	TEMPORARY INFORMATION SIGNING	SQFT	52	52
		Z0048665	RAILROAD PROTECTIVE LIABILITY INSURANCE	L SUM	1	1
		XX009424	10" DIAMETER, DIP STORM SEWER PIPE	FOOT	130	130

Drawing file: W:\Projects_by_Village\Weisse Park\601013242 - Broadway Commuter Improvements_CAD - RFA\Details.dwg Sep 15, 2020 - 4:23pm

HANCOCK ENGINEERING
 Civil Engineers
 Municipal Consultants
 Established 1911
 9933 Roosevelt Road
 Westchester, IL 60154-2780
 Phone: 708-665-0300
 www.hancock.com

DESIGNED --	REVISD --
DRAWN -- DMM, SFB	REVISD --
CHECKED --	REVISD --
DATE -- 7-10-20	REVISD 8-31-20 UTILITIES/METRA PAD

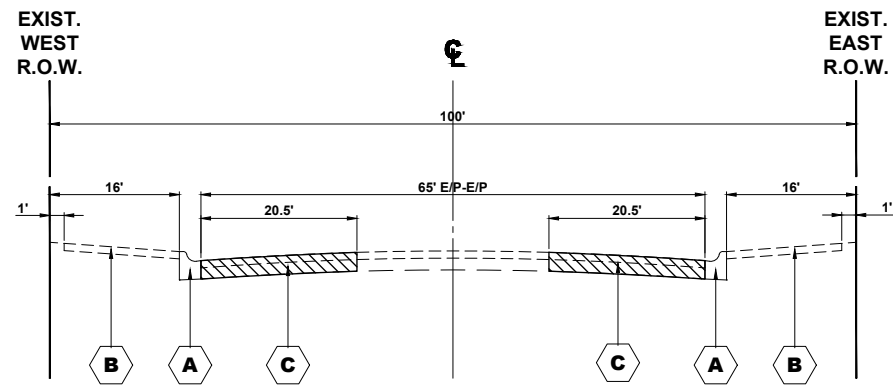
**STATE OF ILLINOIS
DEPARTMENT OF TRANSPORTATION**

SUMMARY OF QUANTITIES

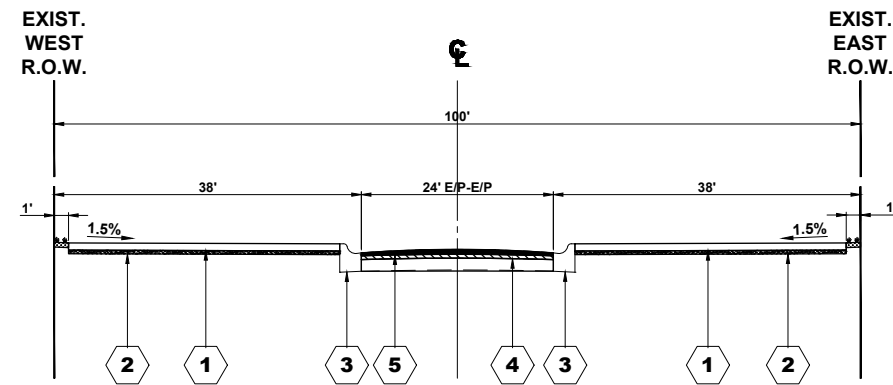
SCALE: NONE SHEET NO. 1 OF 1 SHEETS STA. - TO STA. -

F.A.U. RTE.	SECTION	COUNTY	TOTAL SHEETS	SHEET NO.
-	17-00132-00-MS	COOK	25	5
CONTRACT NO. 61677				
FED. ROAD DIST. NO. 1 ILLINOIS FED. AID PROJECT				

E.H.E. PROJECT NO. 600-19-24201



EXISTING TYPICAL SECTION
BROADWAY AVENUE AT RICE STREET
STA. 14+25 TO STA. 15+65



PROPOSED TYPICAL SECTION
BROADWAY AVENUE AT RICE STREET
STA. 14+25 TO STA. 15+65

LEGEND OF SYMBOLS

		SYMBOL	DESCRIPTION
EXISTING		A	CURB AND GUTTER REMOVAL
		B	SIDEWALK REMOVAL
		C	PAVEMENT REMOVAL
		D	EXISTING LANDSCAPED PARKWAY
		E	EXISTING DEPOT PLATFORM
PROPOSED		1	PORTLAND CEMENT CONCRETE SIDEWALK, 5"
		2	AGGREGATE BASE COURSE, TYPE B, 2" (INCLUDED IN THE PRICE OF COMBINATION CURB AND GUTTER AND PORTLAND CEMENT SIDEWALK, 5")
		3	COMBINATION CURB AND GUTTER, TYPE B-6.12 (MODIFIED)
		4	HOT-MIX ASPHALT BINDER COURSE, IL-19.0, N50, 2-1/2"
		5	HOT-MIX ASPHALT SURFACE COURSE, MIX "D", N50, 1-1/2"
		6	CONCRETE PAD, 6"
		7	AGGREGATE BASE COURSE, TYPE B, 4"
		8	PROPOSED BICYCLE SHELTER (SEE JOB SPECIFIC DETAIL SHEET FOR INFO)

Drawing file: C:\Temp\AcPublish\5750A\Typ Sections.dwg Jun 09, 2020 - 1:25pm

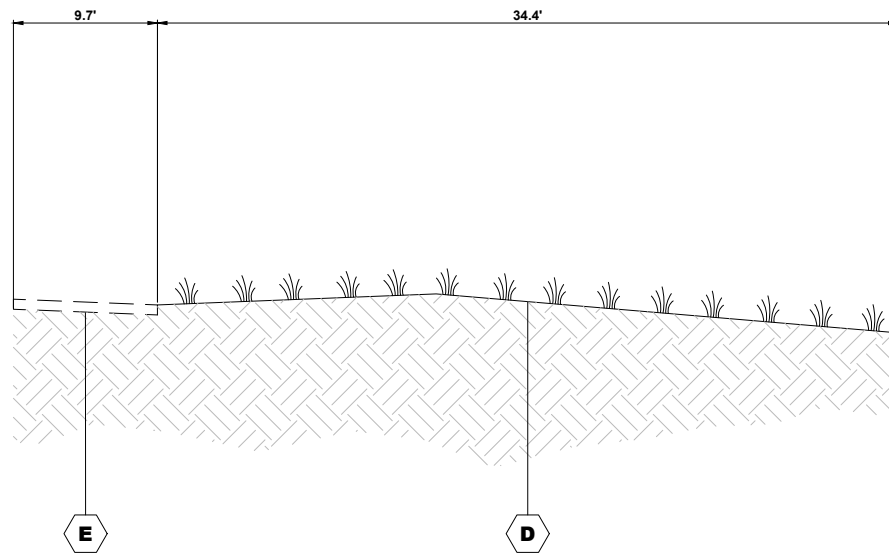
HANCOCK ENGINEERING
 1439 S. State St. Chicago, IL 60605
 Civil Engineers Municipal Consultants Established 1911
 9908 Roosevelt Road Westchester, IL 60154-2700
 Phone: 708.666.0800 www.hancock.com

DESIGNED	- -	REVISED	-
DRAWN	- DMM	REVISED	-
CHECKED	- -	REVISED	-
DATE	- 7-10-20	REVISED	-

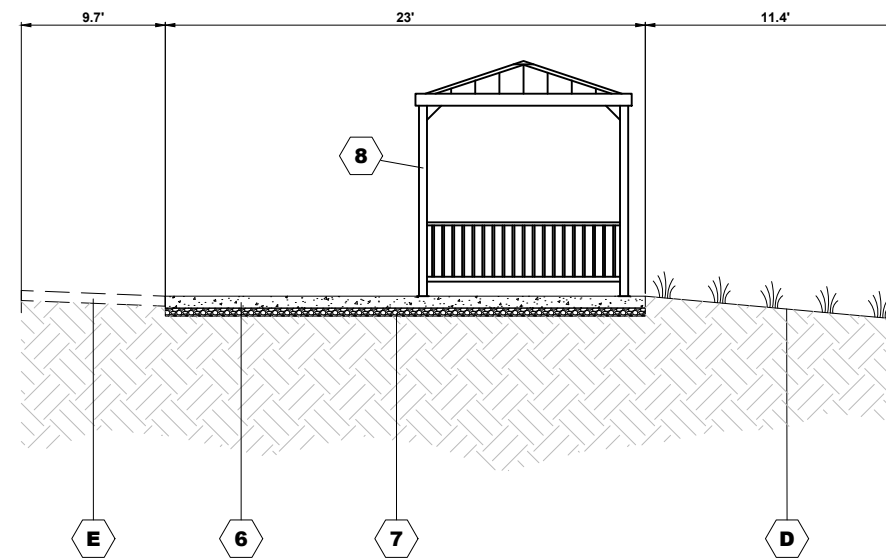
STATE OF ILLINOIS
DEPARTMENT OF TRANSPORTATION

TYPICAL SECTIONS
BROADWAY AVENUE AT RICE STREET
 SCALE: SHEET NO. 1 OF 2 SHEETS STA. TO STA.

F.A.U. RTE.	SECTION	COUNTY	TOTAL SHEETS	SHEET NO.
-	17-00132-00-MS	COOK	25	6
FED. ROAD DIST. NO. 1 ILLINOIS			CONTRACT NO. 61G77	
FED. AID PROJECT			E.H.E. PROJECT NO. 600-19-24201	



EXISTING TYPICAL SECTION
MELROSE PARK METRA STATION
STA. 1+15 TO STA. 1+65



PROPOSED TYPICAL SECTION
MELROSE PARK METRA STATION
STA. 1+15 TO STA. 1+65

LEGEND OF SYMBOLS

SYMBOL		DESCRIPTION
EXISTING	A	CURB AND GUTTER REMOVAL
	B	SIDEWALK REMOVAL
	C	PAVEMENT REMOVAL
	D	EXISTING LANDSCAPED PARKWAY
	E	EXISTING DEPOT PLATFORM
PROPOSED	1	PORTLAND CEMENT CONCRETE SIDEWALK, 5"
	2	AGGREGATE BASE COURSE, TYPE B, 2" (INCLUDED IN THE PRICE OF COMBINATION CURB AND GUTTER AND PORTLAND CEMENT SIDEWALK, 5")
	3	COMBINATION CURB AND GUTTER, TYPE B-6.12 (MODIFIED)
	4	HOT-MIX ASPHALT BINDER COURSE, IL-19.0, N50, 2-1/2"
	5	HOT-MIX ASPHALT SURFACE COURSE, MIX "D", N50, 1-1/2"
	6	CONCRETE PAD, 6"
	7	AGGREGATE BASE COURSE, TYPE B, 4"
	8	PROPOSED BICYCLE SHELTER (SEE JOB SPECIFIC DETAIL SHEET FOR INFO)

Drawing file: W:\Projects_by_Village\Melrose Park\60019242 - Broadway Commuter Improvements_CMAQ-RTA\Typ Sections.dwg Jul 31, 2020 - 2:02pm

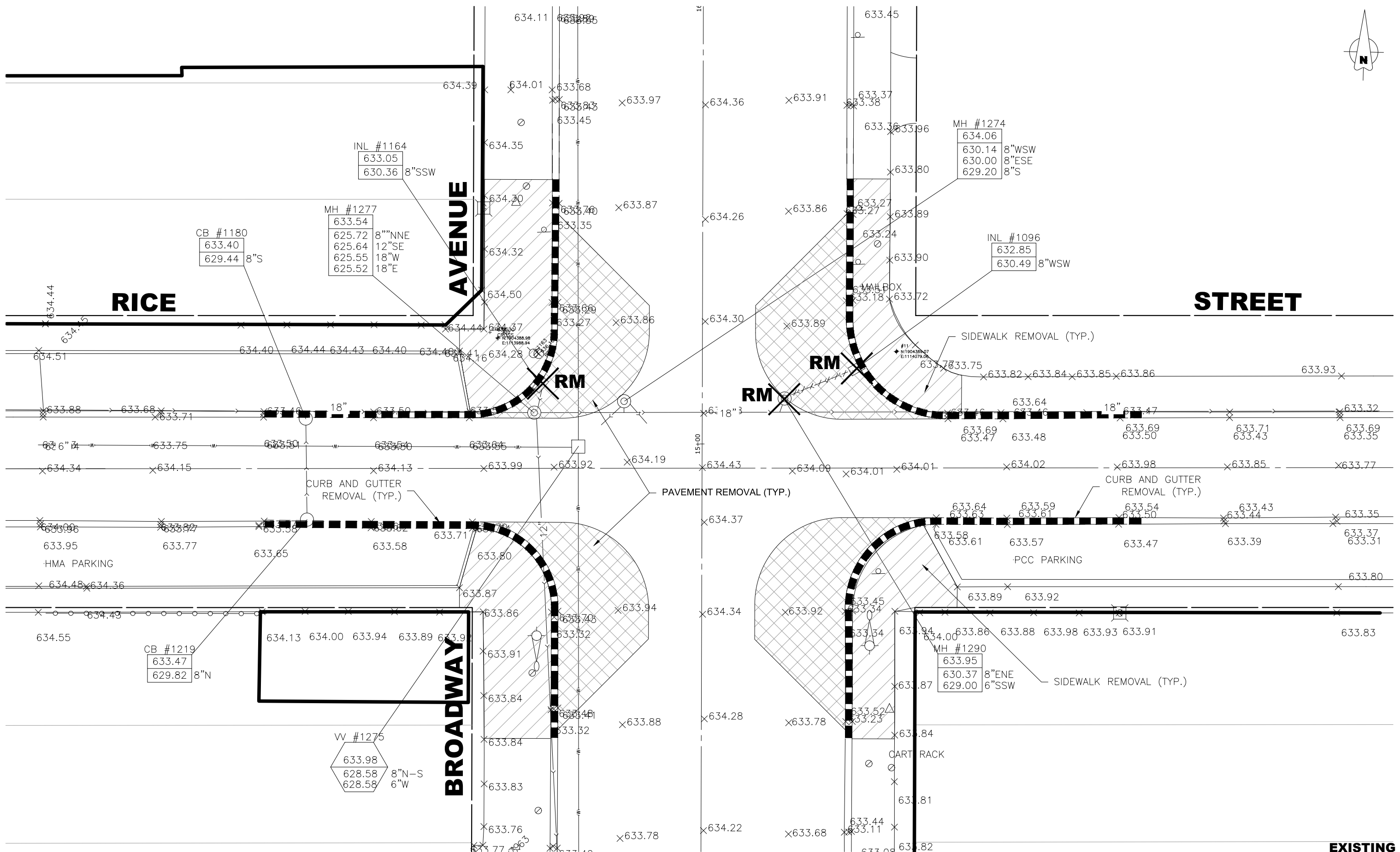
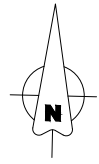
HANCOCK ENGINEERING
 Civil Engineers
 Municipal Consultants
 Established 1911
 9909 Roosevelt Road
 Woodstock, IL 60194-2900
 Phone: 708.866.0800
 www.hancock.com

DESIGNED - -	REVISED -
DRAWN - DMM, SFB	REVISED -
CHECKED - -	REVISED -
DATE - 7-10-20	REVISED -

STATE OF ILLINOIS
DEPARTMENT OF TRANSPORTATION

TYPICAL SECTIONS	
TRAIN STATION	
SCALE:	SHEET NO. 2 OF 2 SHEETS
STA.	TO STA.

F.A.U. RTE.	SECTION	COUNTY	TOTAL SHEETS	SHEET NO.
-	17-00132-00-MS	COOK	25	7
CONTRACT NO. 61G77			FED. AID PROJECT	



EXISTING TOPOGRAPHY



CMI Engineers
 Municipal Consultants
 Established 1911

7100 Roosevelt Road
 Westchester, IL 60185-2782
 Phone: 708.645.8800
 www.hancock.com

DESIGNED - -	REVISED -
DRAWN - DMM	REVISED -
CHECKED - -	REVISED -
DATE - 7-10-20	REVISED -

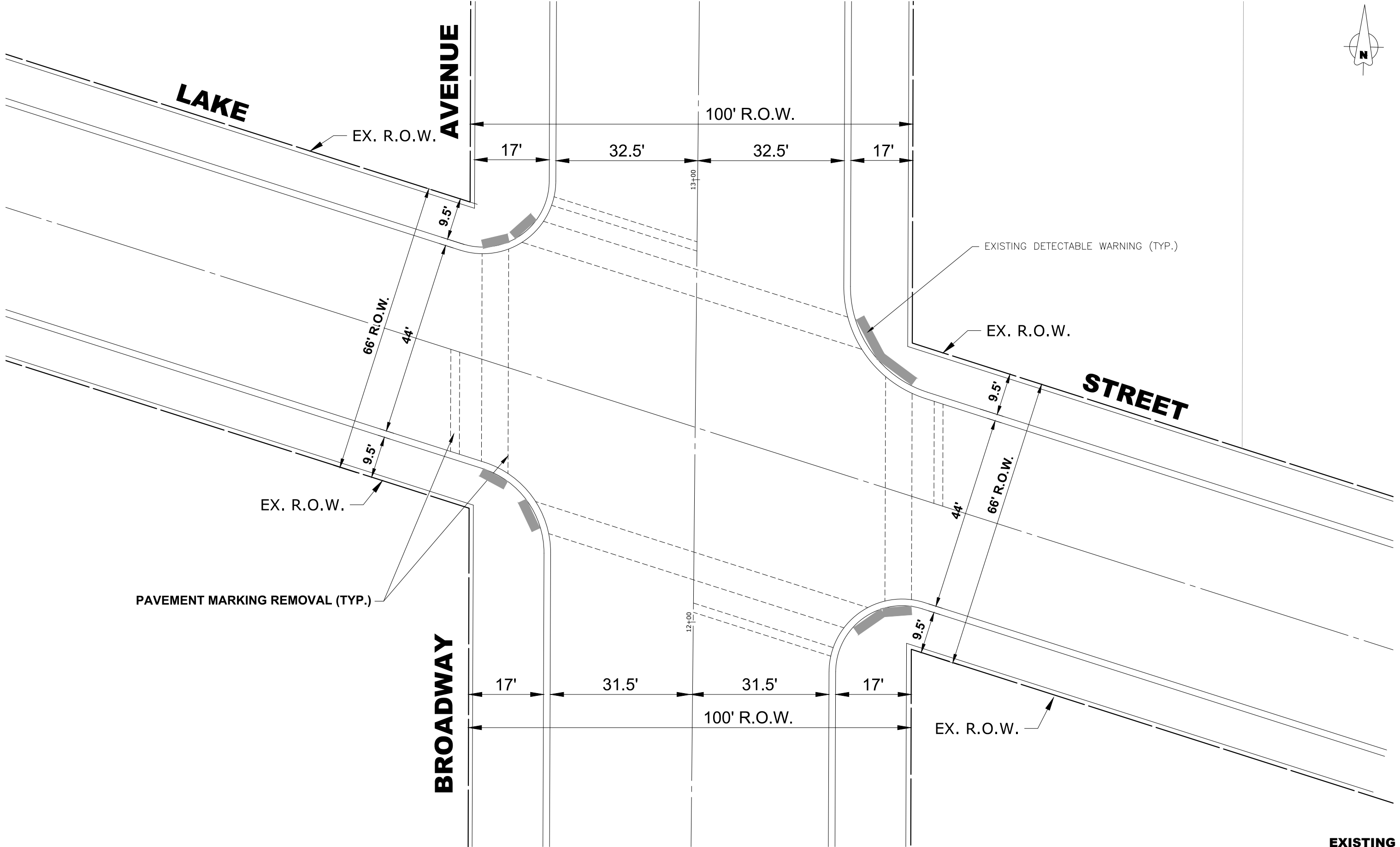
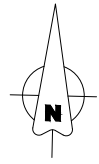
STATE OF ILLINOIS
DEPARTMENT OF TRANSPORTATION

REMOVAL PLANS
BROADWAY AVENUE AT RICE STREET

SCALE: 1" = 10' SHEET NO. 1 OF 4 SHEETS STA. X TO STA. X

F.A.U. RTE.	SECTION	COUNTY	TOTAL SHEETS	SHEET NO.
-	17-00132-00-MS	COOK	25	8
FED. ROAD DIST. NO. 1		ILLINOIS	CONTRACT NO. 61G77	
			FED. AID PROJECT	

Drawing file: C:\Temp\publish_53376\Broadway_2020.dwg Jul 09, 2020 - 10:49am



Drawing file: C:\Temp\McPublish_53376\Broadway_2020.dwg Jul 09, 2020 - 10:49am

HANCOCK ENGINEERING
 189 S. State Street, Suite 200, Chicago, IL 60604
 Phone: 773.845.5337
 www.hancock.com

◆ CMI Engineers
 ◆ Municipal Consultants
 ◆ Established 1911

7100 Roosevelt Road
 Westchester, IL 60154-5782
 Phone: 708.645.8300
 www.westchest.com

DESIGNED	- -	REVISED	-
DRAWN	- DMM	REVISED	-
CHECKED	- -	REVISED	-
DATE	- 7-10-20	REVISED	-

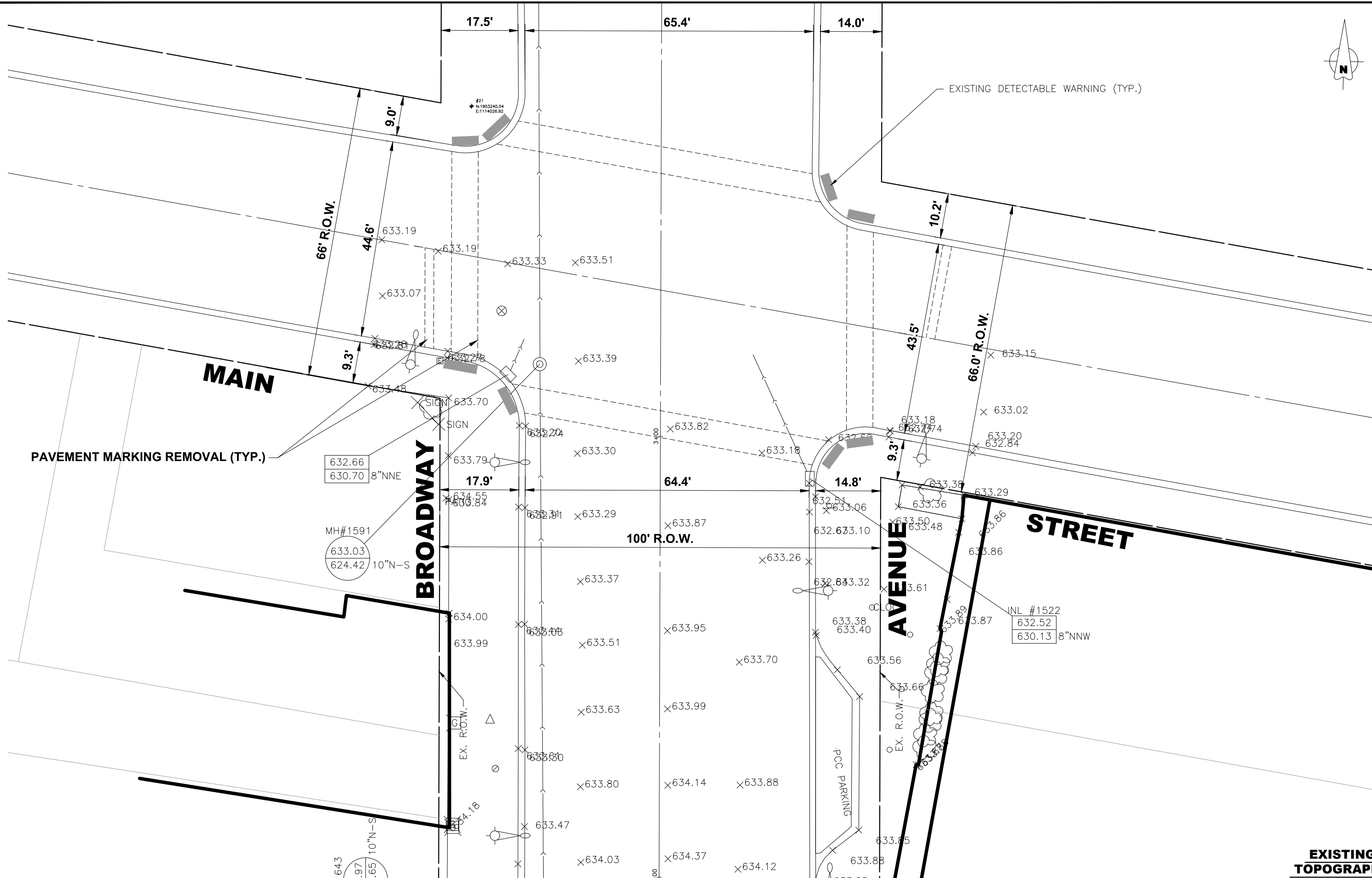
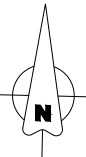
**STATE OF ILLINOIS
 DEPARTMENT OF TRANSPORTATION**

**REMOVAL PLANS
 BROADWAY AVENUE AT LAKE STREET**

SCALE: 1" = 10' SHEET NO. 2 OF 4 SHEETS STA. X TO STA. X

F.A.U. RTE.	SECTION	COUNTY	TOTAL SHEETS	SHEET NO.
-	17-00132-00-MS	COOK	25	9
FED. ROAD DIST. NO. 1 ILLINOIS			CONTRACT NO. 61G77	
FED. AID PROJECT			E.H.E. PROJECT NO. 600-19-24201	

EXISTING TOPOGRAPHY



Drawing file: C:\Temp\McPublish_53376\Broadway_2020.dwg Jul 09, 2020 - 10:49am



CMI Engineers
Municipal Consultants
Established 1911
1989 State of Illinois
Professional Engineer
7800 Roosevelt Road
Westchester, IL 60154-5782
Phone: 708-645-8300
www.hancock.com

DESIGNED - -	REVISD - -
DRAWN - DMM	REVISD - -
CHECKED - -	REVISD - -
DATE - 7-10-20	REVISD - -

STATE OF ILLINOIS
DEPARTMENT OF TRANSPORTATION

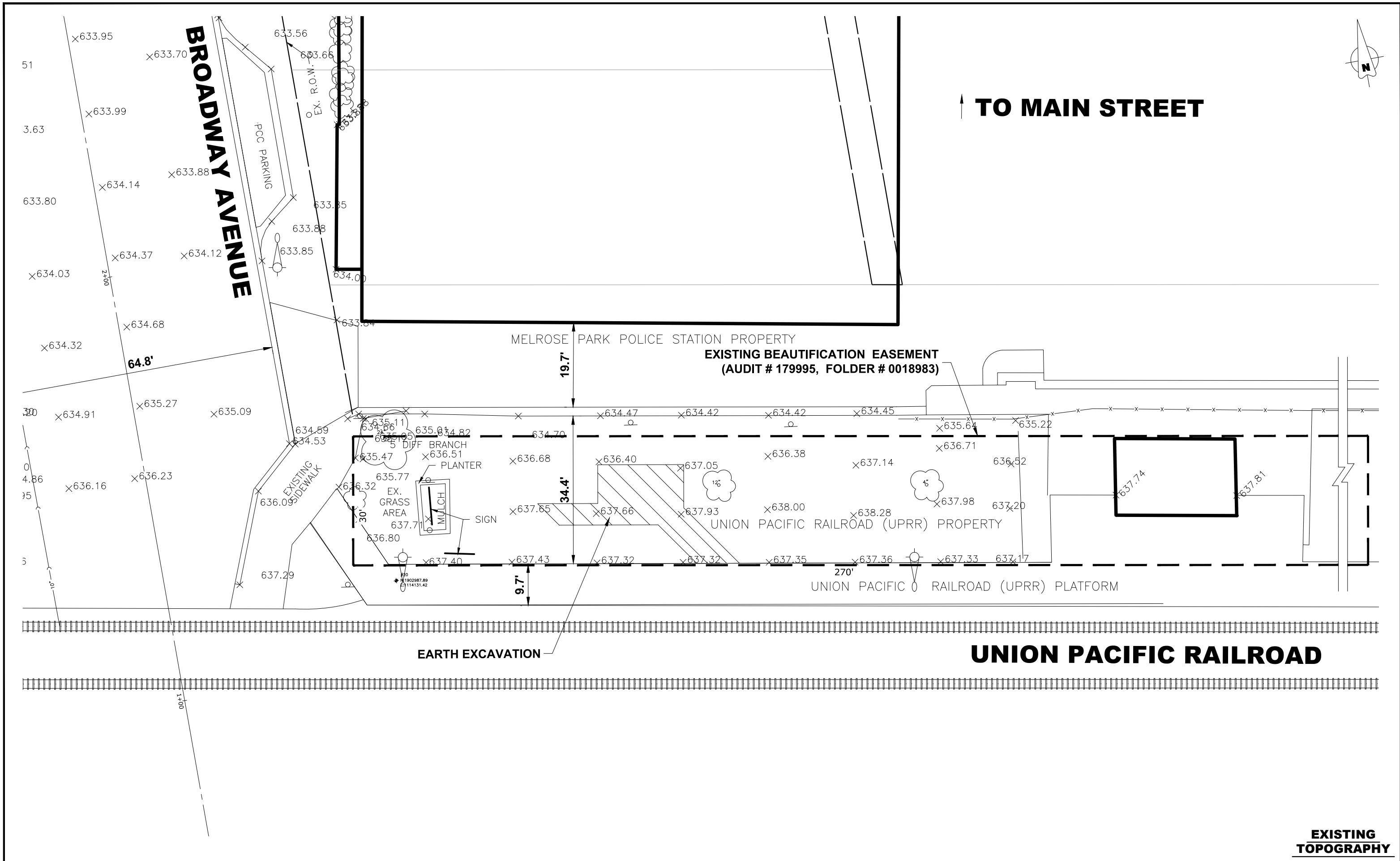
REMOVAL PLANS
BROADWAY AVENUE AT MAIN STREET
SCALE: 1" = 10'
SHEET NO. 3 OF 4 SHEETS
STA. X TO STA. X

F.A.U. RTE.	SECTION	COUNTY	TOTAL SHEETS	SHEET NO.
-	17-00132-00-MS	COOK	25	10
FED. ROAD DIST. NO. 1		ILLINOIS	CONTRACT NO. 61G77	
		FED. AID PROJECT		

EXISTING TOPOGRAPHY

E.H.E. PROJECT NO. 600-19-24201

Drawing file: W:\Projects_by_Village_Melrose_Park\60019242 - Broadway Commuter Improvements_CMAQ-RTA Commuter Site\Broadway_2020.dwg Aug 20, 2020 - 12:05pm



EXISTING TOPOGRAPHY

HANCOCK ENGINEERING
 1897 State of Illinois
 CMI Engineers
 Municipal Consultants
 Established 1911

1988 Roosevelt Road
 Westchester, IL 60185-2782
 Phone: 708/645-5882
 www.hancock.com

DESIGNED - -	REVISED -
DRAWN - DMM, SFB	REVISED -
CHECKED - -	REVISED -
DATE - 7-10-20	REVISED -

STATE OF ILLINOIS
DEPARTMENT OF TRANSPORTATION

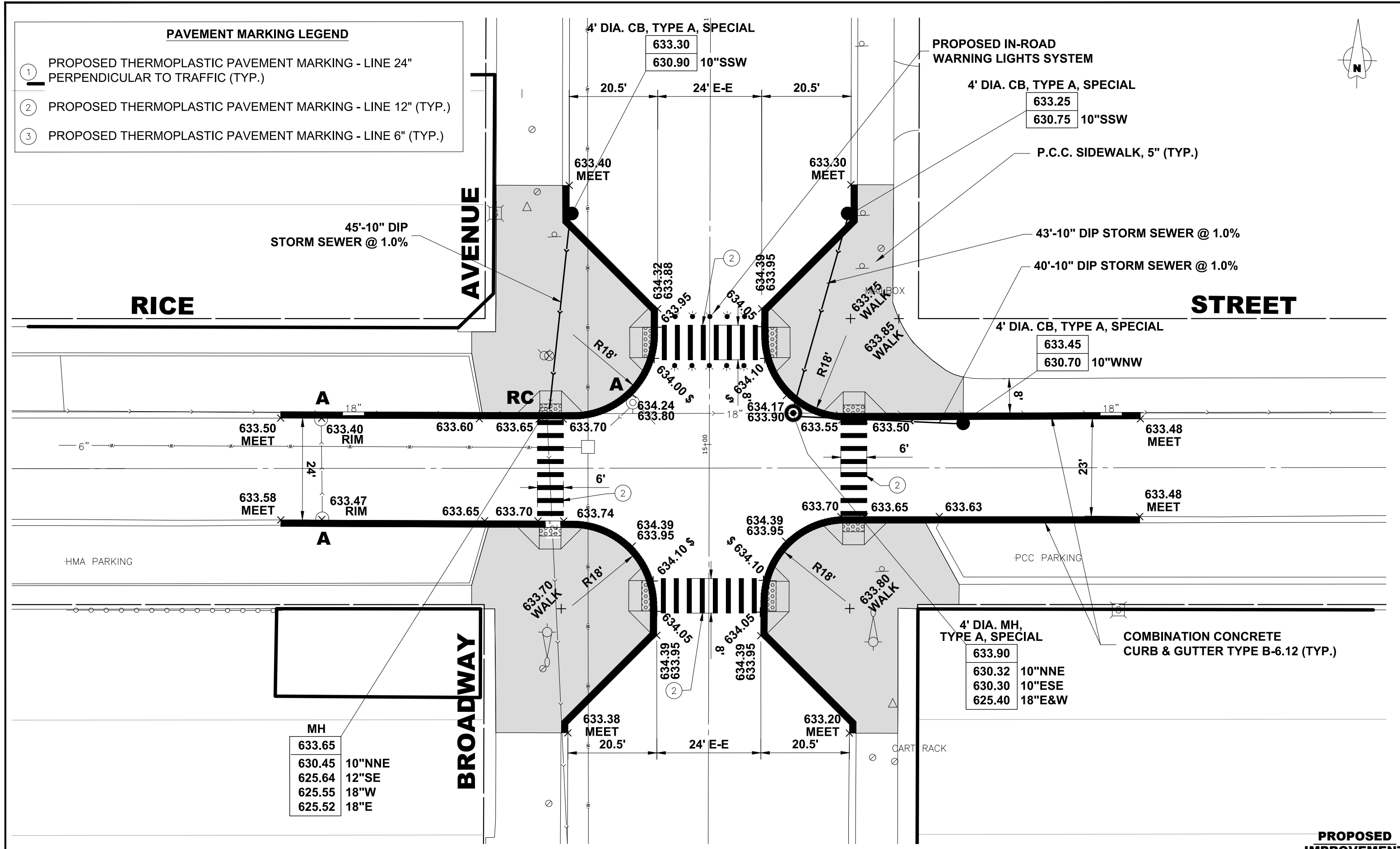
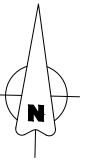
REMOVAL PLANS - U.P.R.R. SITE
S.E. OF BROADWAY AVENUE & MAIN STREET

SCALE: 1" = 10' SHEET NO. 4 OF 4 SHEETS STA. X TO STA. X

F.A.U. RTE.	SECTION	COUNTY	TOTAL SHEETS	SHEET NO.
-	17-00132-00-MS	COOK	25	11
FED. ROAD DIST. NO. 1		ILLINOIS	CONTRACT NO. 61G77	
		FED. AID PROJECT		

PAVEMENT MARKING LEGEND

- ① PROPOSED THERMOPLASTIC PAVEMENT MARKING - LINE 24" PERPENDICULAR TO TRAFFIC (TYP.)
- ② PROPOSED THERMOPLASTIC PAVEMENT MARKING - LINE 12" (TYP.)
- ③ PROPOSED THERMOPLASTIC PAVEMENT MARKING - LINE 6" (TYP.)



45'-10" DIP
STORM SEWER @ 1.0%

PROPOSED IN-ROAD
WARNING LIGHTS SYSTEM

RICE

STREET

AVENUE

BROADWAY

MH

633.65
630.45 10"NNE
625.64 12"SE
625.55 18"W
625.52 18"E

4' DIA. MH,
TYPE A, SPECIAL

633.90
630.32 10"NNE
630.30 10"ESE
625.40 18"E&W

PROPOSED IMPROVEMENT

HANCOCK ENGINEERING
 CMI Engineers
 Municipal Consultants
 Established 1911

7100 Roosevelt Road
 Westchester, IL 60154-2782
 Phone: 708.645.0800
 www.hancock.com

DESIGNED - -	REVISED -
DRAWN - DMM	REVISED -
CHECKED - -	REVISED -
DATE - 7-10-20	REVISED -

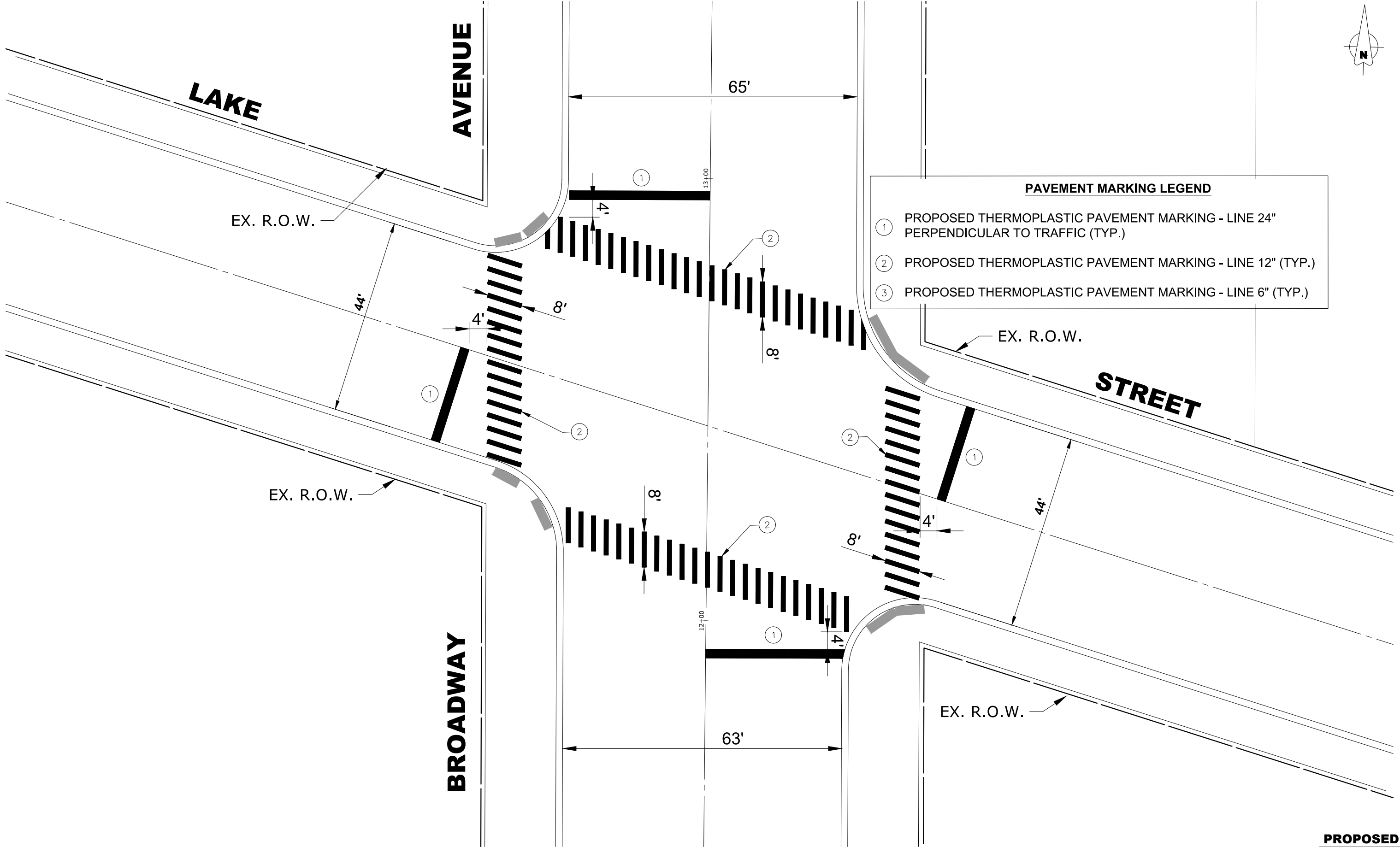
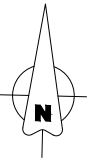
**STATE OF ILLINOIS
DEPARTMENT OF TRANSPORTATION**

**PROPOSED PLANS
BROADWAY AVENUE AT RICE STREET**

SCALE: 1" = 10'
 SHEET NO. 1 OF 4 SHEETS
 STA. X TO STA. X

F.A.U. RTE.	SECTION	COUNTY	TOTAL SHEETS	SHEET NO.
-	17-00132-00-MS	COOK	25	12
FED. ROAD DIST. NO. 1		ILLINOIS	CONTRACT NO. 61G77	
			FED. AID PROJECT	

Drawing file: W:\Projects_by_Village_Melrose_Park\60019242 - Broadway Commuter Improvements_CMAQ-RTA\Commuter_Site\Broadway_2020.dwg
 Jul 09, 2020 - 11:43am



PAVEMENT MARKING LEGEND

- ① PROPOSED THERMOPLASTIC PAVEMENT MARKING - LINE 24" PERPENDICULAR TO TRAFFIC (TYP.)
- ② PROPOSED THERMOPLASTIC PAVEMENT MARKING - LINE 12" (TYP.)
- ③ PROPOSED THERMOPLASTIC PAVEMENT MARKING - LINE 6" (TYP.)

PROPOSED IMPROVEMENT

Drawing file: W:\Projects_by_Village_Melrose_Park\60019242 - Broadway Commuter Improvements_CMAQ-RTA\Commuter Site\Broadway_2020.dwg Jul 09, 2020 - 11:44am

HANCOCK ENGINEERING
 1894 State of Illinois
 CMI Engineers
 Municipal Consultants
 Established 1911

7900 Roosevelt Road
 Wheeling, IL 60150-5782
 Phone: 708.645.8300
 www.hancock.com

DESIGNED	- -	REVISED	-
DRAWN	- DMM	REVISED	-
CHECKED	- -	REVISED	-
DATE	- 7-10-20	REVISED	-

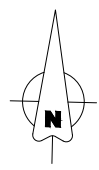
**STATE OF ILLINOIS
DEPARTMENT OF TRANSPORTATION**

**PROPOSED PLANS
BROADWAY AVENUE AT LAKE STREET**

SCALE: 1" = 10' SHEET NO. 2 OF 4 SHEETS STA. X TO STA. X

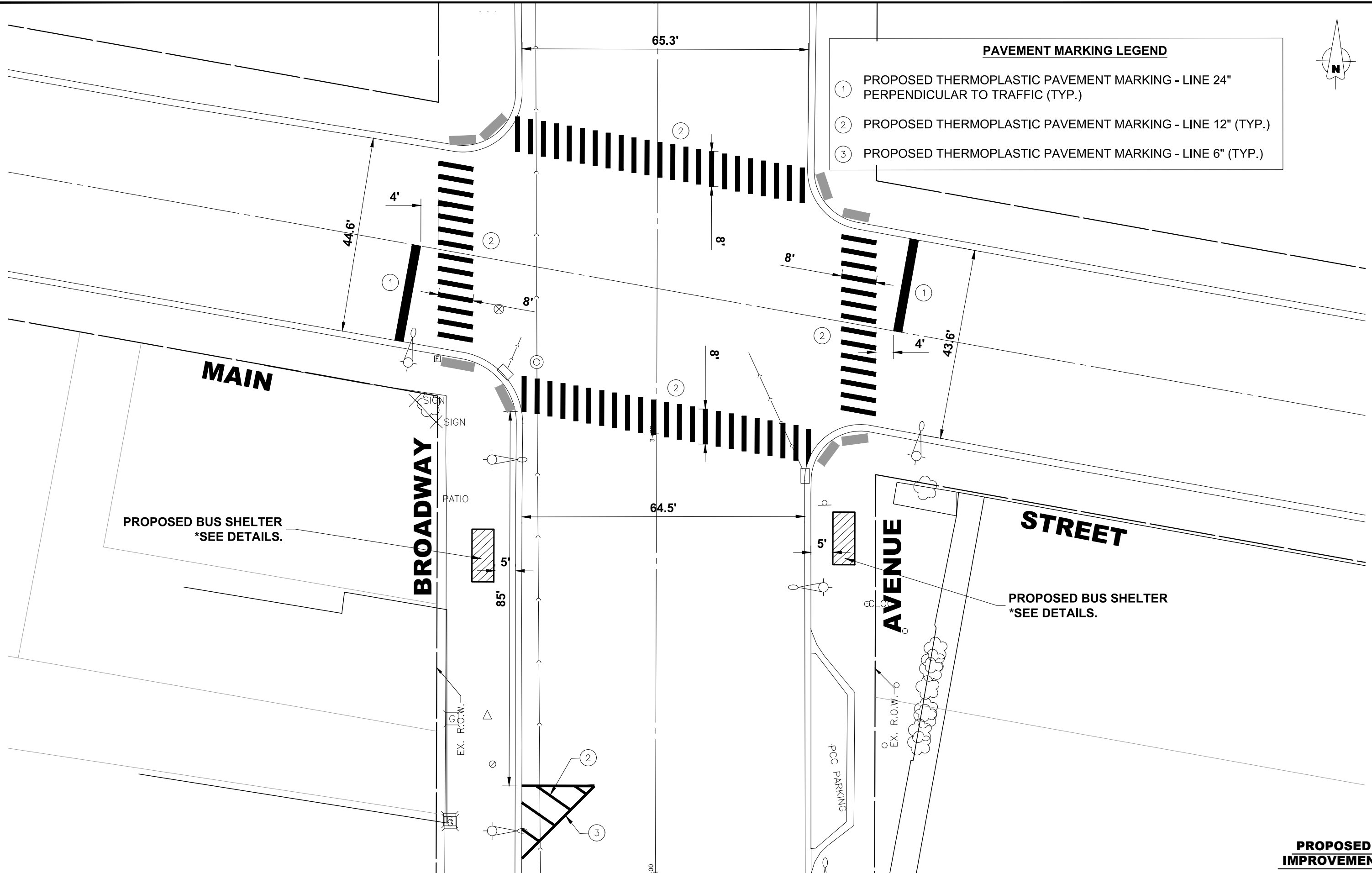
F.A.U. RTE.	SECTION	COUNTY	TOTAL SHEETS	SHEET NO.
-	17-00132-00-MS	COOK	25	13
FED. ROAD DIST. NO. 1 ILLINOIS			CONTRACT NO. 61G77	
FED. AID PROJECT			E.H.E. PROJECT NO. 600-19-24201	

Drawing file: W:\Projects_by_Village_Melrose_Park\60019242 - Broadway Commuter Improvements_CMAQ-RTA\Commuter_Site\Broadway_2020.dwg Jul 09, 2020 - 11:44am



PAVEMENT MARKING LEGEND

- ① PROPOSED THERMOPLASTIC PAVEMENT MARKING - LINE 24" PERPENDICULAR TO TRAFFIC (TYP.)
- ② PROPOSED THERMOPLASTIC PAVEMENT MARKING - LINE 12" (TYP.)
- ③ PROPOSED THERMOPLASTIC PAVEMENT MARKING - LINE 6" (TYP.)



PROPOSED IMPROVEMENT

HANCOCK ENGINEERING
 1897 State of Illinois
 CMI Engineers
 Municipal Consultants
 Established 1911
 7700 Roosevelt Road
 Westchester, IL 60154-5782
 Phone: 708.645.8300
 www.hancock.com

DESIGNED - -	REVISED -
DRAWN - DMM	REVISED -
CHECKED - -	REVISED -
DATE - 7-10-20	REVISED -

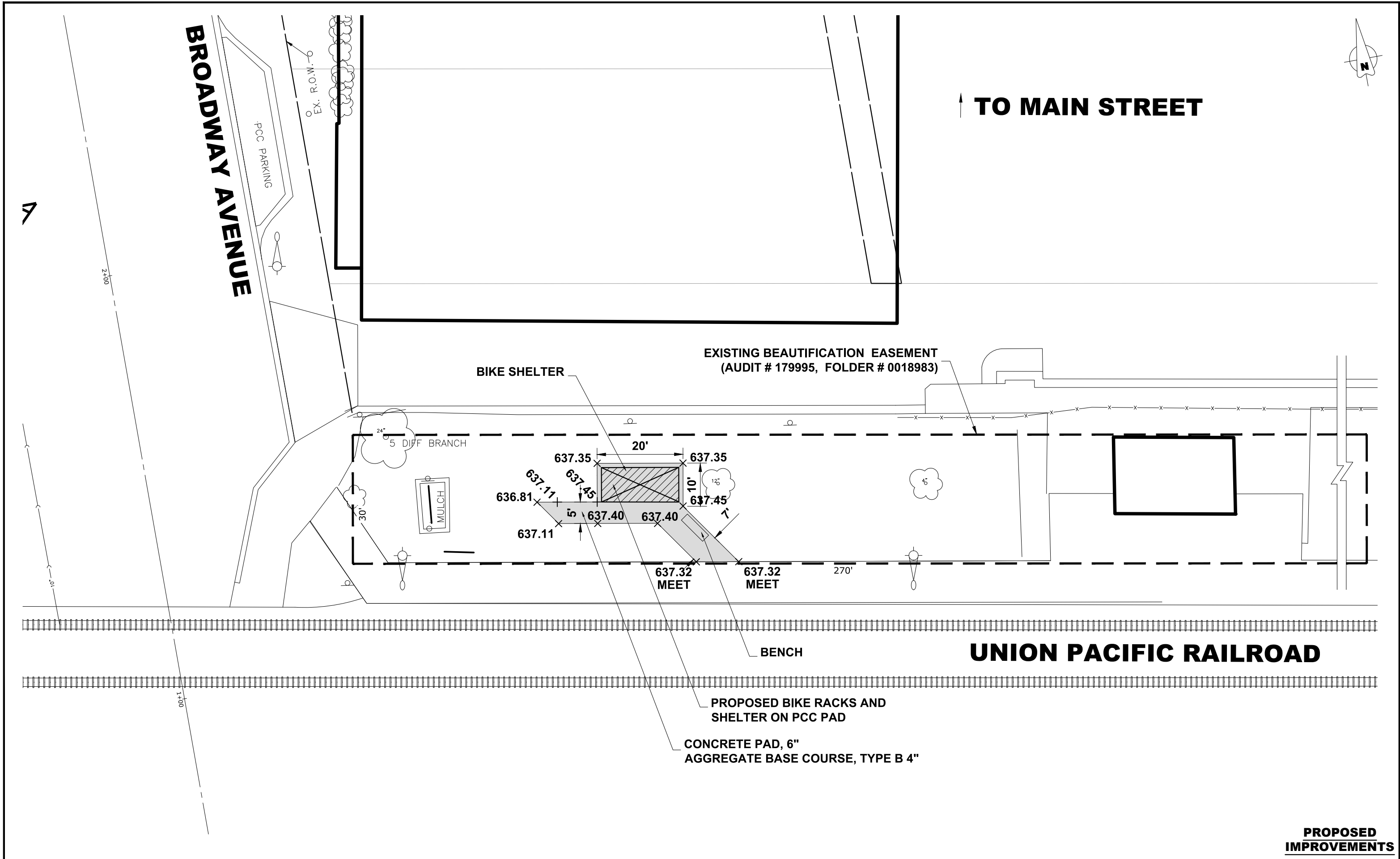
**STATE OF ILLINOIS
 DEPARTMENT OF TRANSPORTATION**

**PROPOSED PLANS
 BROADWAY AVENUE AT MAIN STREET**

SCALE: 1" = 10' SHEET NO. 3 OF 4 SHEETS STA. X TO STA. X

F.A.U. RTE.	SECTION	COUNTY	TOTAL SHEETS	SHEET NO.
-	17-00132-00-MS	COOK	25	14
FED. ROAD DIST. NO. 1 ILLINOIS			CONTRACT NO. 61G77	
FED. AID PROJECT			E.H.E. PROJECT NO. 600-19-24201	

Drawing file: W:\Projects_by_Village_Melrose_Park\60019242 - Broadway Commuter Improvements_CMAQ-RTA\Commuter_Site_Broadway_2020.dwg Aug 20, 2020 - 12:05pm



HANCOCK ENGINEERING

Civil Engineers
Municipal Consultants
Established 1911

1180 Roosevelt Road
Westchester, IL 60154-2782
Phone: 708-645-8800
www.hancock.com

DESIGNED - -	REVISED -
DRAWN - DMM, SFB	REVISED -
CHECKED - -	REVISED -
DATE - 7-10-20	REVISED -

DESIGNED - -	REVISED -
DRAWN - DMM, SFB	REVISED -
CHECKED - -	REVISED -
DATE - 7-10-20	REVISED -

**STATE OF ILLINOIS
DEPARTMENT OF TRANSPORTATION**

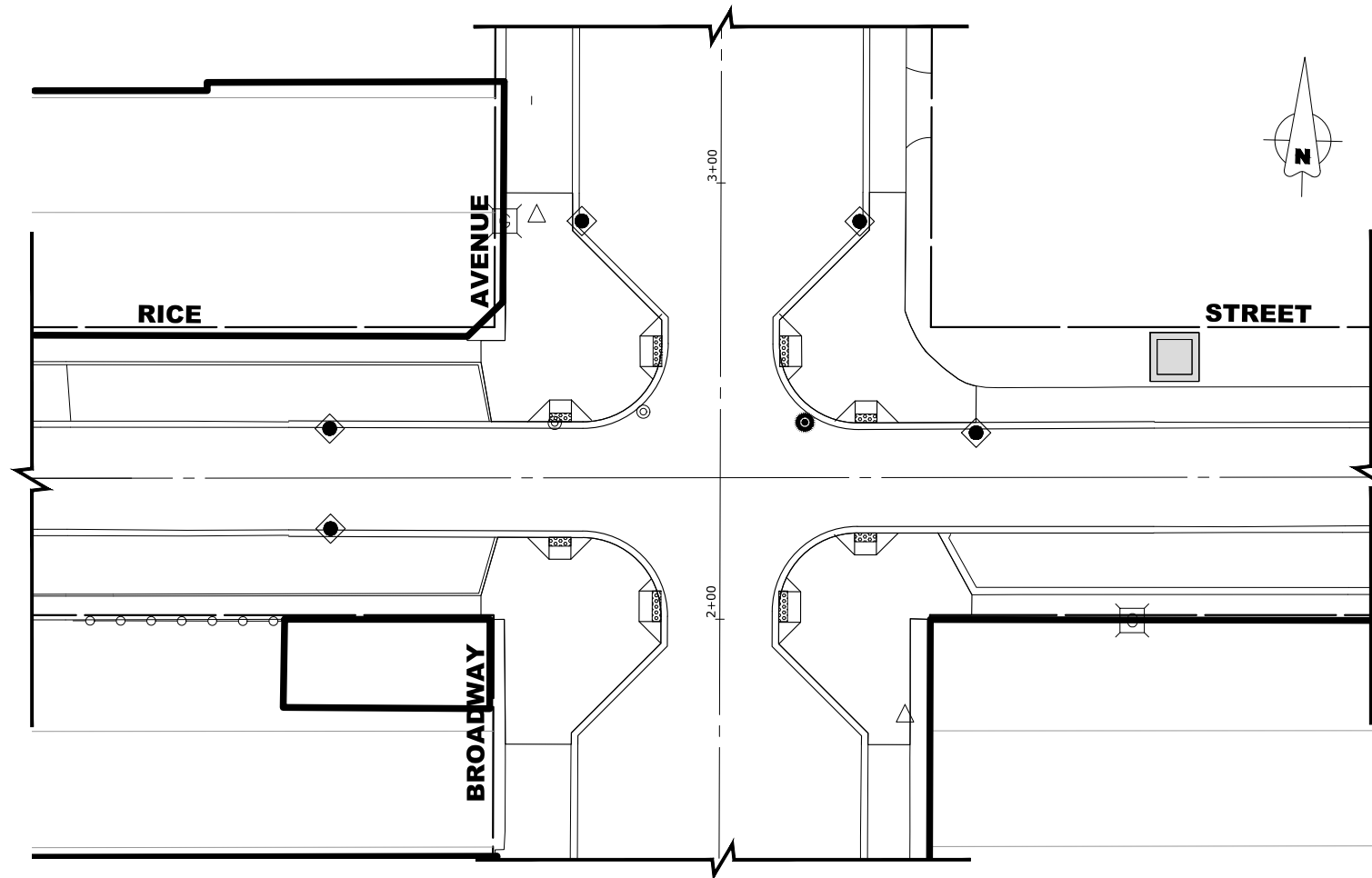
**PROPOSED PLANS - U.P.R.R. SITE
S.E. OF BROADWAY AVENUE & MAIN STREET**

SCALE: 1" = 10' SHEET NO. 4 OF 4 SHEETS STA. X TO STA. X

F.A.U. RTE.	SECTION	COUNTY	TOTAL SHEETS	SHEET NO.
-	17-00132-00-MS	COOK	25	15
FED. ROAD DIST. NO. 1 ILLINOIS			CONTRACT NO. 61G77	
FED. AID PROJECT			E.H.E. PROJECT NO. 600-19-24201	

PROPOSED IMPROVEMENTS

Drawing file: W:\Projects_by_Village\Melrose Park\60119242 - Broadway Commuter Improvements_CMAQ-RFA\Commuter_Site\Erosion.dwg
 Jul 09, 2020 - 2:54pm



EROSION AND SEDIMENT CONTROL PLAN

THE EXISTING LAND COVER CONSISTS OF PAVED STREETS WITH MINOR GRASS PARKWAYS LOCATED IN A RESIDENTIAL AREA. THE AREAS ADJACENT TO THE PROJECT SITE ARE COMPRISED OF DENSE RESIDENTIAL PROPERTIES. FLOOD PROTECTION AREAS AND POINTS OF DISCHARGE TO JURISDICTIONAL WATERS OF THE U.S. DO NOT EXIST ON THIS PROJECT. WE DO NOT BELIEVE THERE ARE ANY AREAS SUSCEPTIBLE TO EROSION OR SEDIMENTATION DUE TO THESE IMPROVEMENTS. SOIL DATA IS NOT AVAILABLE BUT, PAST PROJECTS IN THE SUBJECT VILLAGE CONCLUDE THAT THE EXISTING SOIL CONSISTS OF CLAY WITH SOME MINOR SILT AND TRACES OF SAND.

PRIOR TO ANY SOIL/PAVEMENT DISTURBANCE, INLET FILTER ASSEMBLIES SHALL BE INSTALLED AS SHOWN ON PLANS.

THE INLET FILTER, PRIMARY PURPOSE IS TO TRAP SEDIMENT, REQUIRED FOR THIS PROJECT WILL BE A DROP IN INLET PROTECTION DEVICE SIMILAR TO FLEXSTORM INLET FILTERS. INLET FILTERS OF THIS TYPE HAVE BEEN USED ON PAST PROJECTS OF SIMILAR SIZE AND SCOPE AND HAVE HAD SATISFACTORY RESULTS.

THE INLET FILTER ASSEMBLY SHALL BE APPROVED BY THE ENGINEER OR VILLAGE PRIOR TO ORDERING AND INSTALLATION. THE INLET FILTER SHALL BE INSPECTED WEEKLY AND AFTER A 0.5 INCH RAIN EVENT BY THE ENGINEER. THE ENGINEER WILL REPORT ANY ISSUES, VIA VERBAL OR WRITTEN COMMUNICATION, THAT NEED TO BE ADDRESSED BY THE CONTRACTOR.

MAINTENANCE OF THE PROPOSED INLET FILTER WILL BE PER MANUFACTURE RECOMMENDATIONS AND WILL BE DONE BY THE CONTRACTOR. TYPICAL MAINTENANCE PRACTICES INCLUDE INSPECTION AFTER A RUNOFF EVENT, SEDIMENT REMOVAL AT 50% CAPACITY, AND REPAIRS/REPLACEMENT AS NEEDED.

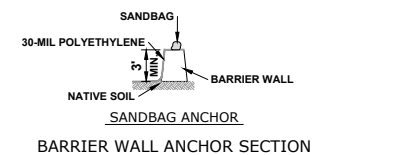
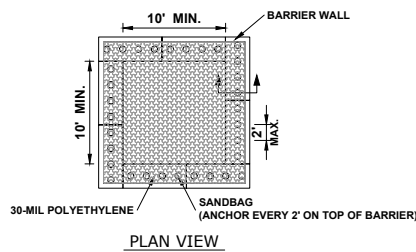
PRIOR TO ANY PORTLAND CEMENT CONCRETE (PCC) POUR, CONCRETE WASHOUT BOXES SHALL BE INSTALLED AS SHOWN ON PLANS OR AS DIRECTED BY THE ENGINEER.

CONCRETE WASHOUT BOXES, PRIMARY PURPOSE IS TO CONTAIN CONCRETE LIQUIDS AND PREVENT CONCRETE LIQUID RUNOFF FROM ENTERING SEWERS OR WATERWAYS, REQUIRED FOR THIS PROJECT WILL CONSIST OF A BARRIER WALL LINED WITH 30-MIL POLYETHYLENE OR AN ENGINEER APPROVED EQUAL WASHOUT. CONCRETE WASHOUT BOXES OF THIS TYPE HAVE BEEN USED ON PAST PROJECTS OF SIMILAR SIZE AND SCOPE AND HAVE HAD SATISFACTORY RESULTS.

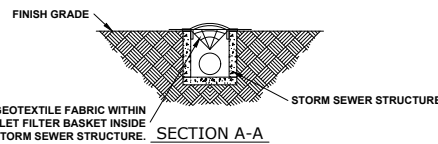
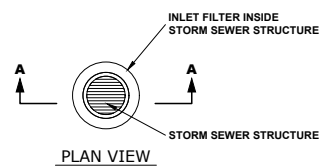
THE PLAN FOR THE CONCRETE WASHOUT BOX SHALL BE SUBMITTED AND APPROVED BY THE ENGINEER OR VILLAGE PRIOR TO INSTALLATION AND WILL BE INSPECTED AFTER INSTALLATION. THE WASHOUT BOX SHALL BE INSPECTED PRIOR TO A CONCRETE POUR AND AFTER A CONCRETE POUR BY THE ENGINEER. THE ENGINEER WILL REPORT ANY ISSUES, VIA VERBAL OR WRITTEN COMMUNICATION, THAT NEED TO BE ADDRESSED BY THE CONTRACTOR.

MAINTENANCE OF THE PROPOSED CONCRETE WASHOUT BOXES WILL BE DONE BY THE CONTRACTOR. TYPICAL MAINTENANCE PRACTICES INCLUDE REPLACING DAMAGED LINER, DISPOSING OF SOLIDIFIED CONCRETE WASHOUT, AND REMOVAL OF ANY DISCHARGES WITHIN 24 HOURS.

ALL DISPOSAL OF CONSTRUCTION MATERIAL, SEDIMENT, AND SOLIDIFIED CONCRETE SHALL BE AT A CCDD FACILITY



BARRIER WALL ANCHOR SECTION



INLET FILTER

NOTES

1. MAINTAINING TEMPORARY CONCRETE FACILITIES SHALL INCLUDE REMOVING AND DISPOSING OF HARDEN CONCRETE AND/OR SLURRY AND RETURNING THE FACILITIES TO A FUNCTIONAL CONDITION.
2. FACILITY SHALL BE CLEANED OR RECONSTRUCTED IN A NEW AREA ONCE WASHOUT BECOMES TWO-THIRDS FULL.

CONCRETE WASHOUT

CONSTRUCTION SEQUENCE :

1. INSTALL EROSION CONTROL MEASURES
2. COMPLETE ALL UNDERGROUND WORK
3. PAVEMENT PATCHING
4. RESURFACE PAVEMENTS
5. RESTORE DAMAGED AREAS ADJACENT TO IMPROVEMENTS
6. REMOVE EROSION CONTROL MEASURES

LEGEND

SYMBOL

- INLET FILTER/SEDIMENT CONTROL, DRAINAGE STRUCTURE, INLET FILTER CLEANING
- CONCRETE WASHOUT

NOTES

1. SEE IDOT STANDARD 280001-07 FOR TEMPORARY EROSION CONTROL SYSTEMS.
2. THE CONTRACTOR SHALL ENSURE THAT ADJACENT PROPERTIES REMAIN PROTECTED FROM SEDIMENT DEPOSITION.
3. SOIL STOCKPILES SHALL BE PROTECTED WITH PERIMETER EROSION BARRIER OR OTHER EROSION PROTECTION SPECIFIED BY THE RESIDENT ENGINEER. THE COST SHALL BE INCLUDED IN THE UNIT PRICE FOR THE INDIVIDUAL SOIL MATERIALS.
4. WHEREVER CONSTRUCTION VEHICLE ACCESS ROUTES INTERSECT PAVED PUBLIC ROADS, PROVISIONS SHALL BE MADE TO MINIMIZE THE TRANSPORT OF SEDIMENT BY RUNOFF OR VEHICLE TRACKING ONTO THE PAVED SURFACE. THE PROVISIONS MAY INCLUDE SPRAYING VEHICLE WHEELS TO CLEAR SEDIMENT BEFORE EXITING THE CONSTRUCTION SITE OR OTHER MEASURES APPROVED BY THE ENGINEER.
5. INLET FILTERS SHALL BE PAID FOR UNDER THE PAY ITEM FOR MAINTENANCE OF ROADWAYS. THE COST OF THE CONCRETE WASHOUTS SHALL BE INCLUDED IN THE COST OF THE CONTRACT.
6. INLET FILTER SHALL BE INSTALLED PRIOR TO CONSTRUCTION AND SHALL BE REMOVED AFTER CONSTRUCTION IS COMPLETED. FILTERS WILL BE INSPECTED WEEKLY AND THE CONTRACTOR WILL BE NOTIFIED OF ANY CORRECTIVE MEASURES THAT WILL BE REQUIRED TO BE MADE BY THE CONTRACTOR.



CMI Engineers
 Municipal Consultants
 Established 1911

7700 Roosevelt Road
 Westchester, IL 60154-2702
 Phone: 708.645.8300
 www.hancock.com

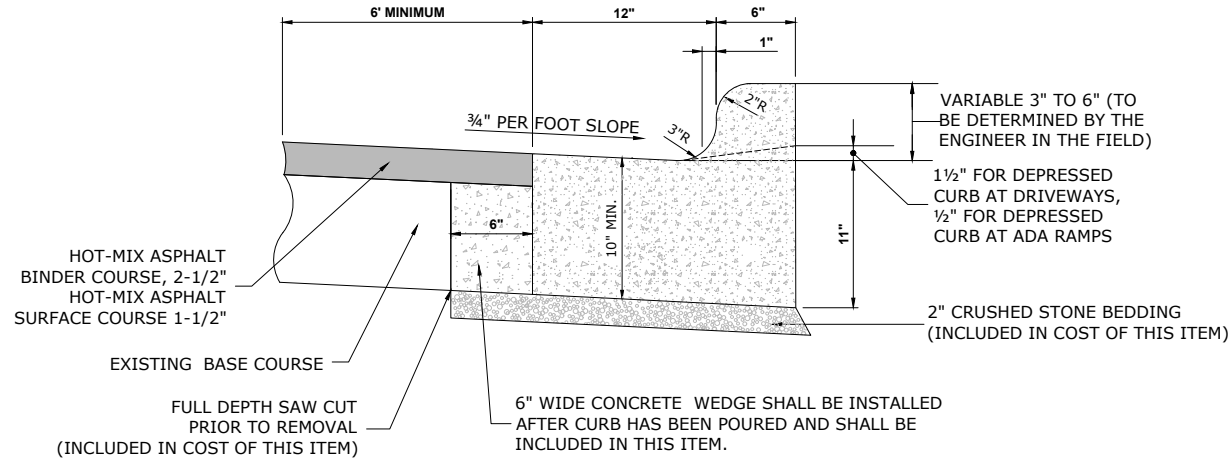
DESIGNED	- -	REVISED	-
DRAWN	- DMM	REVISED	-
CHECKED	- -	REVISED	-
DATE	- 7-10-20	REVISED	-

STATE OF ILLINOIS
DEPARTMENT OF TRANSPORTATION

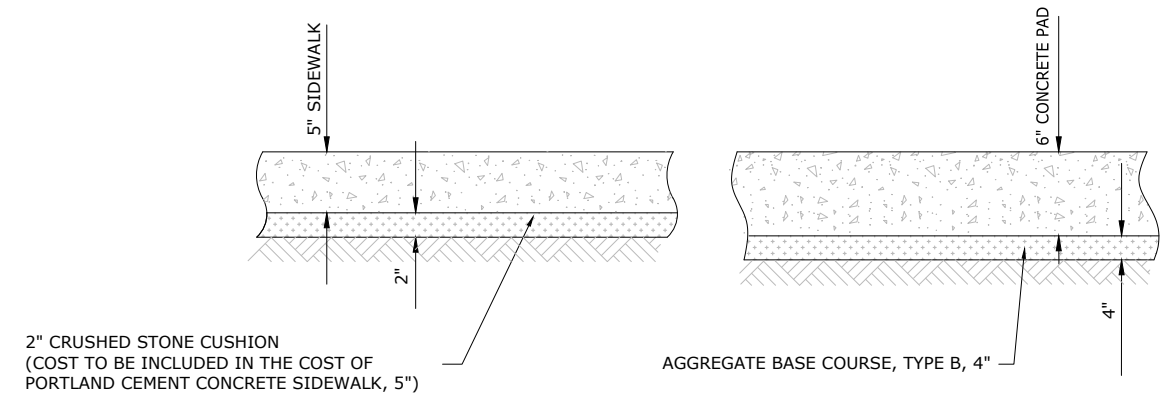
EROSION CONTROL PLAN

SCALE: 1" = 20' SHEET NO. 1 OF 1 SHEETS STA. X TO STA. X

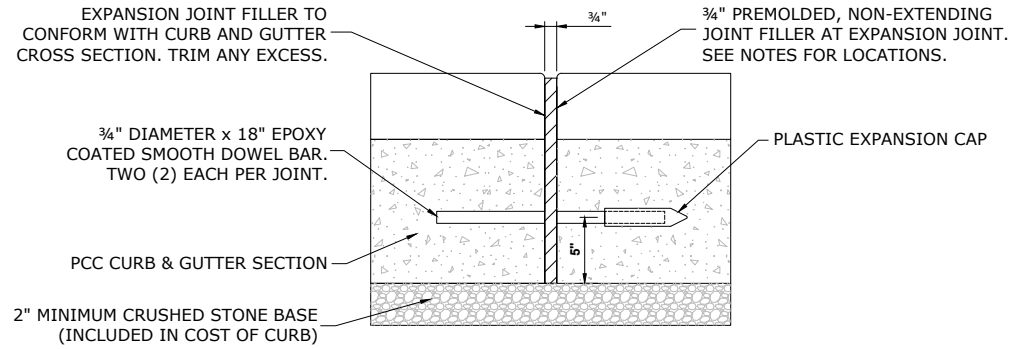
F.A.U. RTE.	SECTION	COUNTY	TOTAL SHEETS	SHEET NO.
-	17-00132-00-MS	COOK	25	16
FED. ROAD DIST. NO. 1 ILLINOIS			CONTRACT NO. 61G77	
FED. AID PROJECT			E.H.E. PROJECT NO. 600-19-24201	



COMBINATION CONCRETE CURB & GUTTER TYPE B-6.12 (MODIFIED)



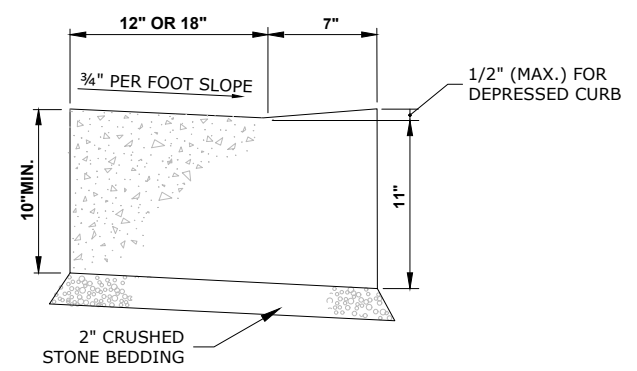
TYPICAL P.C.C. SIDEWALK AND CONCRETE PAD



TYPICAL CURB AND GUTTER EXPANSION JOINT

HOT-MIX ASPHALT (HMA) MIXTURE REQUIREMENTS	
ITEM	AIR VOIDS
HOT-MIX ASPHALT SURFACE COURSE, MIX "D", N50 (IL 9.5mm)	4% @ 50 GYR
HOT-MIX ASPHALT BINDER COURSE, N50 (IL 19.0 mm)	4% @ 50 GYR

THE UNIT WEIGHT USED TO CALCULATE ALL HMA SURFACE MIXTURE QUANTITIES IS 112 LBS/SQ YD/IN
 THE "AC TYPE" FOR POLYMERIZED HMA MIXES SHALL BE "SBS/SBR PG 76-22" AND FOR NON-POLYMERIZED HMA THE "AC TYPE" SHALL BE "PG 64-22" UNLESS MODIFIED BY DISTRICT ONE SPECIAL PROVISIONS.
 FOR USE OF RECYCLED MATERIALS SEE DISTRICT SPECIAL PROVISION.



CURB AND GUTTER AT A.D.A. RAMPS

Drawing file: W:\Projects_by_Village\Metrose Park\60019242 - Broadway Commuter Improvements_CIMQ-RTA_Details.dwg Jul 31, 2020 - 2:04pm

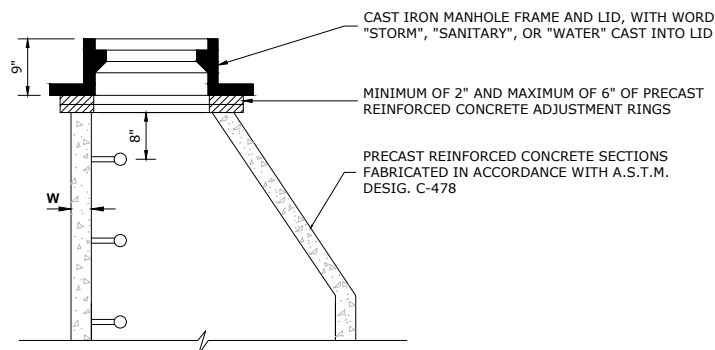
HANCOCK ENGINEERING
 1000 Years of Excellence
 Civil Engineers
 Municipal Consultants
 Established 1911
 7900 Roosevelt Road
 Woodstock, IL 60191-2700
 Phone: 708.265.0300
 www.hancock.com

DESIGNED - -	REVISED - -
DRAWN - DMM, SFB	REVISED - -
CHECKED - -	REVISED - -
DATE - 7-10-20	REVISED - -

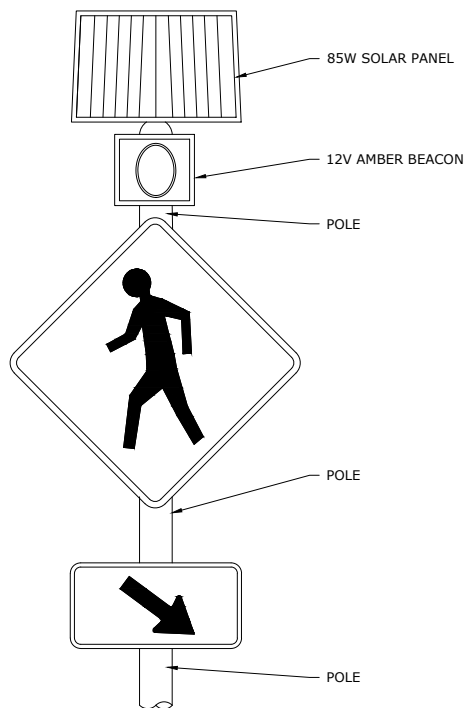
STATE OF ILLINOIS DEPARTMENT OF TRANSPORTATION

DETAILS
 SCALE: NONE SHEET NO. 1 OF 2 SHEETS STA. - TO STA. -

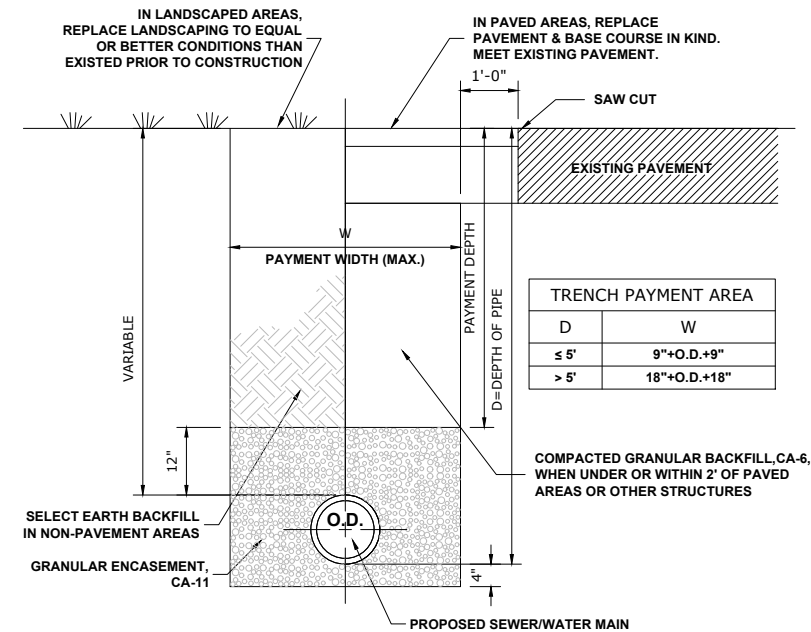
F.A.U. RTE.	SECTION	COUNTY	TOTAL SHEETS	SHEET NO.
-	17-00132-00-MS	COOK	25	17
FED. ROAD DIST. NO. 1 ILLINOIS			CONTRACT NO. 61G77	
FED. ROAD DIST. NO. 1 ILLINOIS			FED. AID PROJECT	



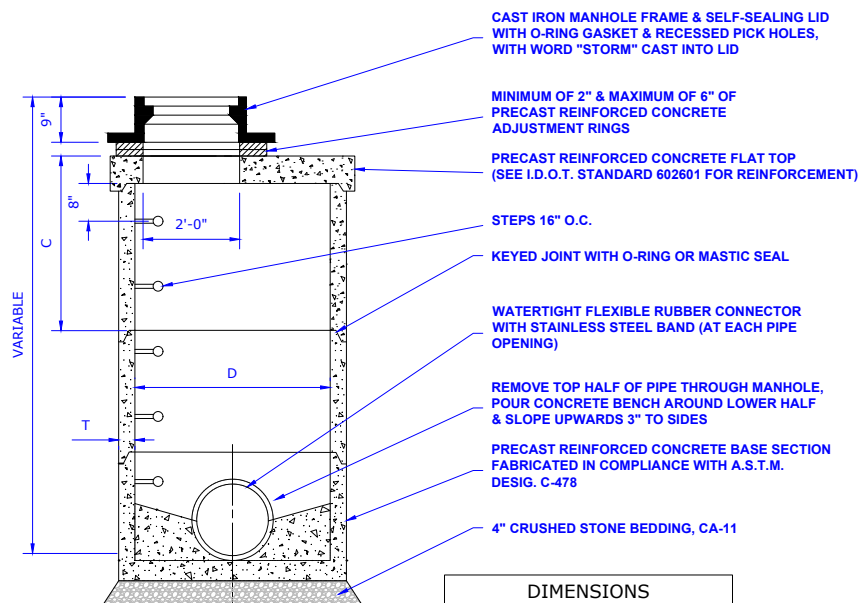
STRUCTURE RECONSTRUCTION



IRWL SYSTEM POLE

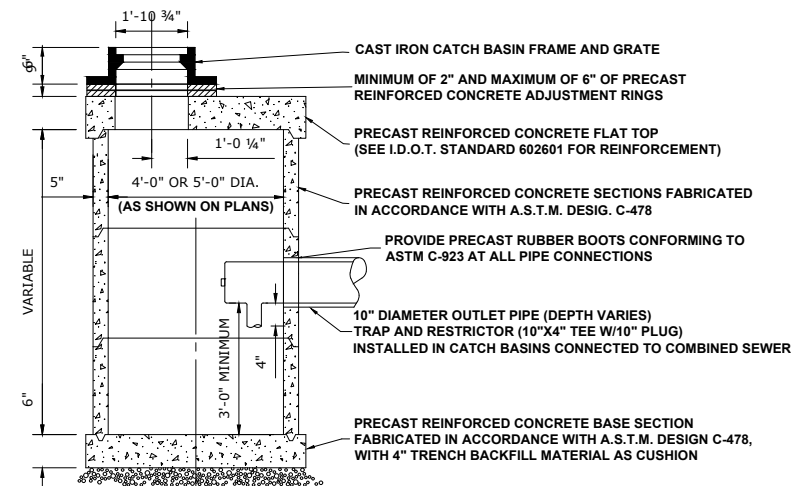


TYPICAL SEWER AND WATER MAIN TRENCH



DIMENSIONS		
D	C	T(MIN.)
3'-0"	1'-3"	4"
4'-0"	2'-6"	4"
5'-0"	3'-9"	5"

MANHOLES, TYPE A, 4' DIAMETER, TYPE 1 FRAME, CLOSED LID, SPECIAL



CATCH BASINS, TYPE A, 4' DIAMETER, TYPE 1 FRAME, OPEN LID, SPECIAL

Drawing file: W:\Projects_by_Village\Metrose Park\60019242 - Broadway Commuter Improvements_CIM40-FRA_Details.dwg Aug 21, 2020 - 10:05am



Civil Engineers
Municipal Consultants
 Established 1911

1900 West of Eisenhower

7700 Roosevelt Road
 Wheeling, IL 60154-2700
 Phone: 708.665.0300
 www.hancock.com

DESIGNED	- -	REVISED	- -
DRAWN	DMM, SFB	REVISED	- -
CHECKED	- -	REVISED	- -
DATE	7-10-20	REVISED	- -

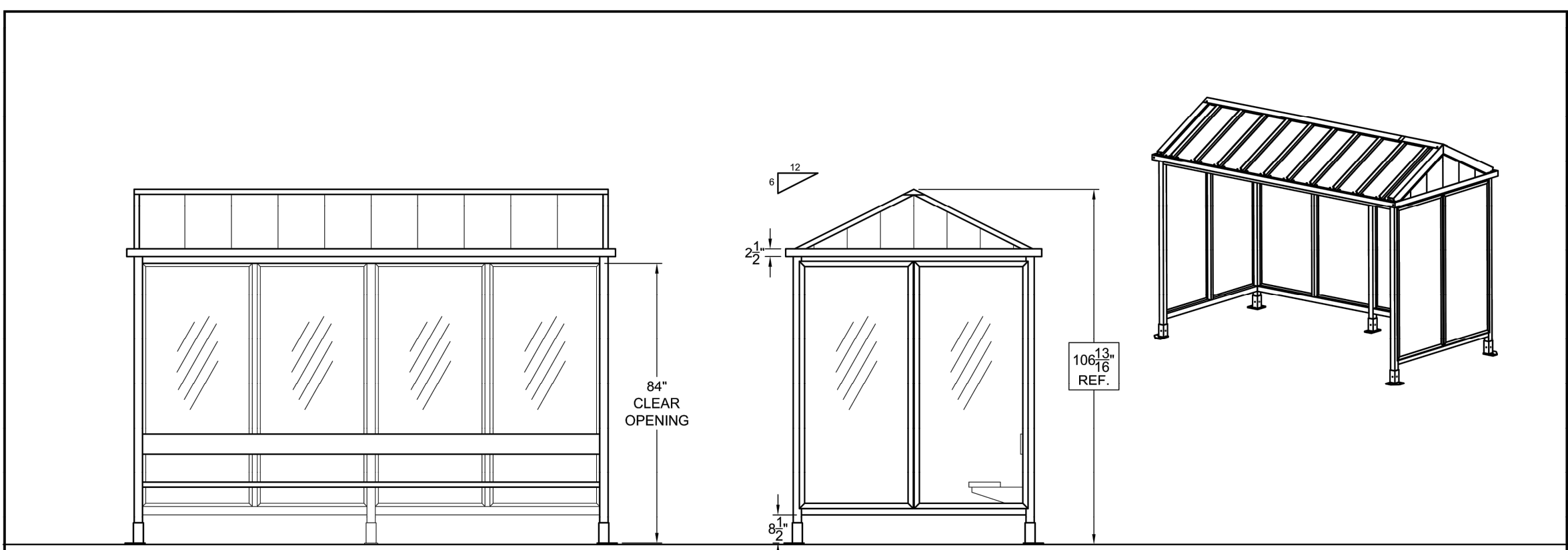
STATE OF ILLINOIS
DEPARTMENT OF TRANSPORTATION

DETAILS

SCALE: NONE SHEET NO. 2 OF 2 SHEETS STA. - TO STA. -

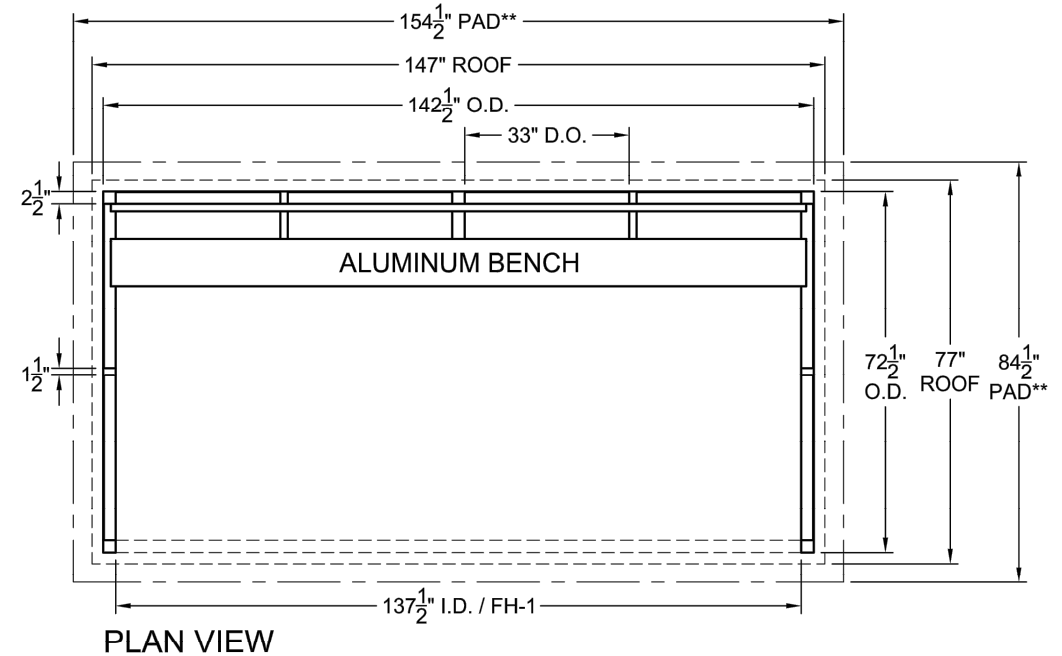
F.A.U. RTE.	SECTION	COUNTY	TOTAL SHEETS	SHEET NO.
-	17-00132-00-MS	COOK	25	18
CONTRACT NO. 61G77				
FED. ROAD DIST. NO. 1 ILLINOIS FED. AID PROJECT				

E.H.E. PROJECT NO. 600-19-24201



FRONT ELEVATION

SIDE ELEVATION



PLAN VIEW

NOTES (INITIAL FOR APPROVAL WHERE INDICATED):

- FINISH IS TO BE DARK BRONZE ANODIZED _____
- ROOF TO BE STANDING SEAM GABLE _____
- ROOF COLOR TO BE DETERMINED _____
- WALL GLAZING IS 1/4" CLEAR TEMPERED GLASS _____

PAD BY OTHERS, DIMENSIONS ARE RECOMMENDATION ONLY, ALL APPLICABLE CODES GOVERN

- DESIGN IS PRELIMINARY, AND INTENDED TO COMPLY WITH SPECIFICATIONS IN ALL ASPECTS, AND PENDING CUSTOMER APPROVAL. ANY SIGNIFICANT DEVIATION FROM SPECIFICATIONS IS UNINTENTIONAL AND MAY BE DISREGARDED: PLEASE CONSULT THE FACTORY.

Duo-Gard Industries, Inc.
Tel (734) 207-9700 Fax (734) 207-7995
www.duo-gard.com

THIS DRAWING IS PROPRIETARY AND FOR THE SOLE USE OF OUR CUSTOMER AND MAY NOT BE COPIED OR REPRODUCED WITHOUT PRIOR WRITTEN CONSENT FROM DUO-GARD INDUSTRIES, INC.
LEAD TIME BEGINS UPON RECEIPT OF SIGNED SHOP DRAWINGS

APPROVAL SIGNATURE _____ DATE _____

PROJECT NAME
CUSTOMER SAMPLE

DESCRIPTION
6' X 12' TRANSIT STYLE SHELTER - PLAN AND ELEVATIONS

PRJT ENG	PRJT MGR	DWG DATE	REV1	REV2	SCALE	PAGE	OF	DRWNG #
XXX	XXX	XXX			NTS	X	X	XXX

Drawing file: C:\Temp\AcPublish_53376\Details.dwg Jul 09, 2020 - 9:54am

100 Years of
Engineering

◆ Civil Engineers
◆ Municipal Consultants
◆ Established 1911

1900 Roosevelt Road
Westchester, IL 60154-9700
Phone: 708-665-0300
www.hancock.com

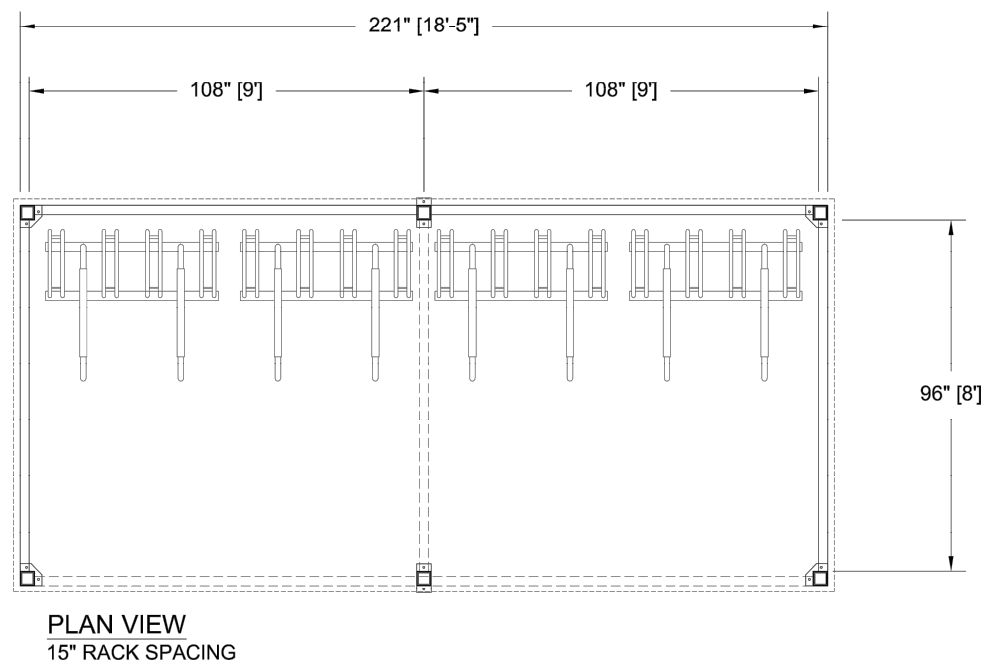
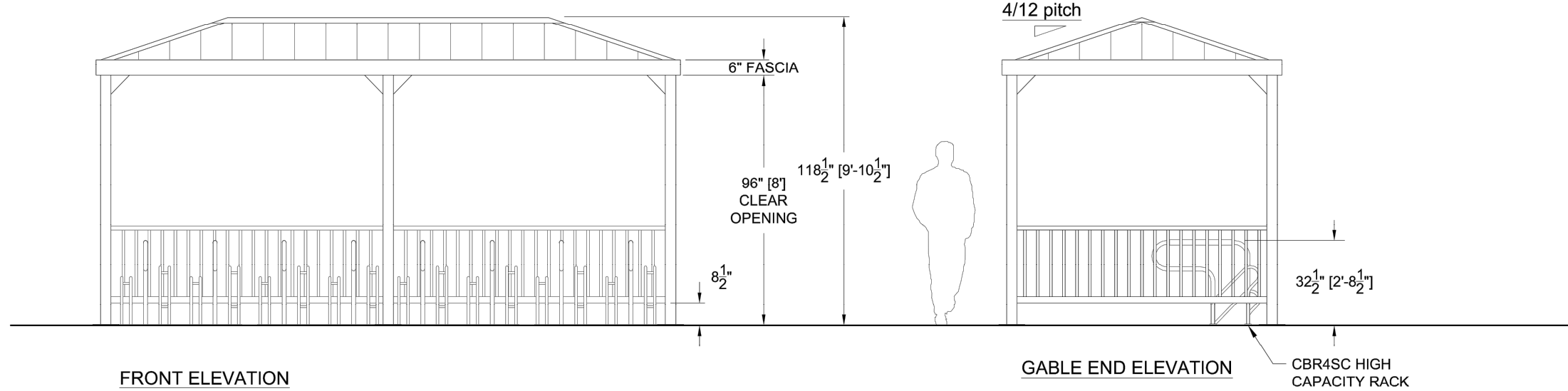
DESIGNED	-	REVISED	-
DRAWN	DMM	REVISED	-
CHECKED	-	REVISED	-
DATE	7-10-20	REVISED	-

**STATE OF ILLINOIS
DEPARTMENT OF TRANSPORTATION**

JOB SPECIFIC DETAILS

SCALE: NONE SHEET NO. 1 OF 2 SHEETS STA. - TO STA. -

F.A.U. RTE.	SECTION	COUNTY	TOTAL SHEETS	SHEET NO.
-	17-00132-00-MS	COOK	25	19
CONTRACT NO. 61G77				
FED. ROAD DIST. NO. 1 ILLINOIS FED. AID PROJECT				



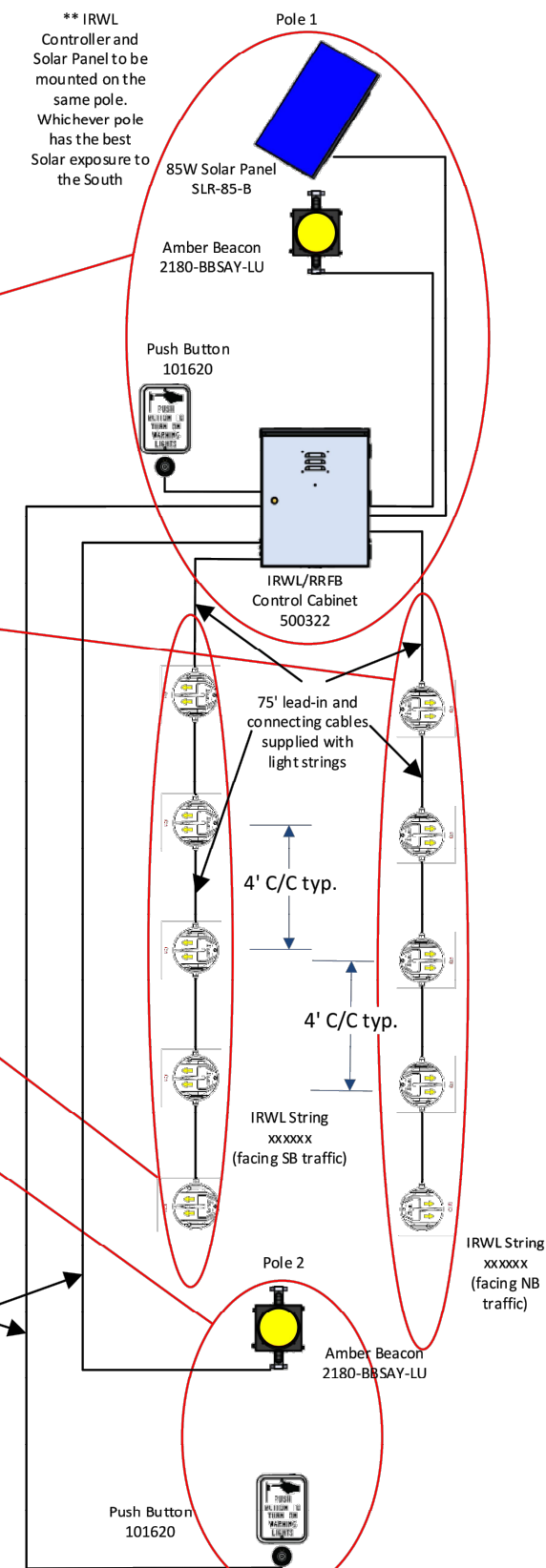
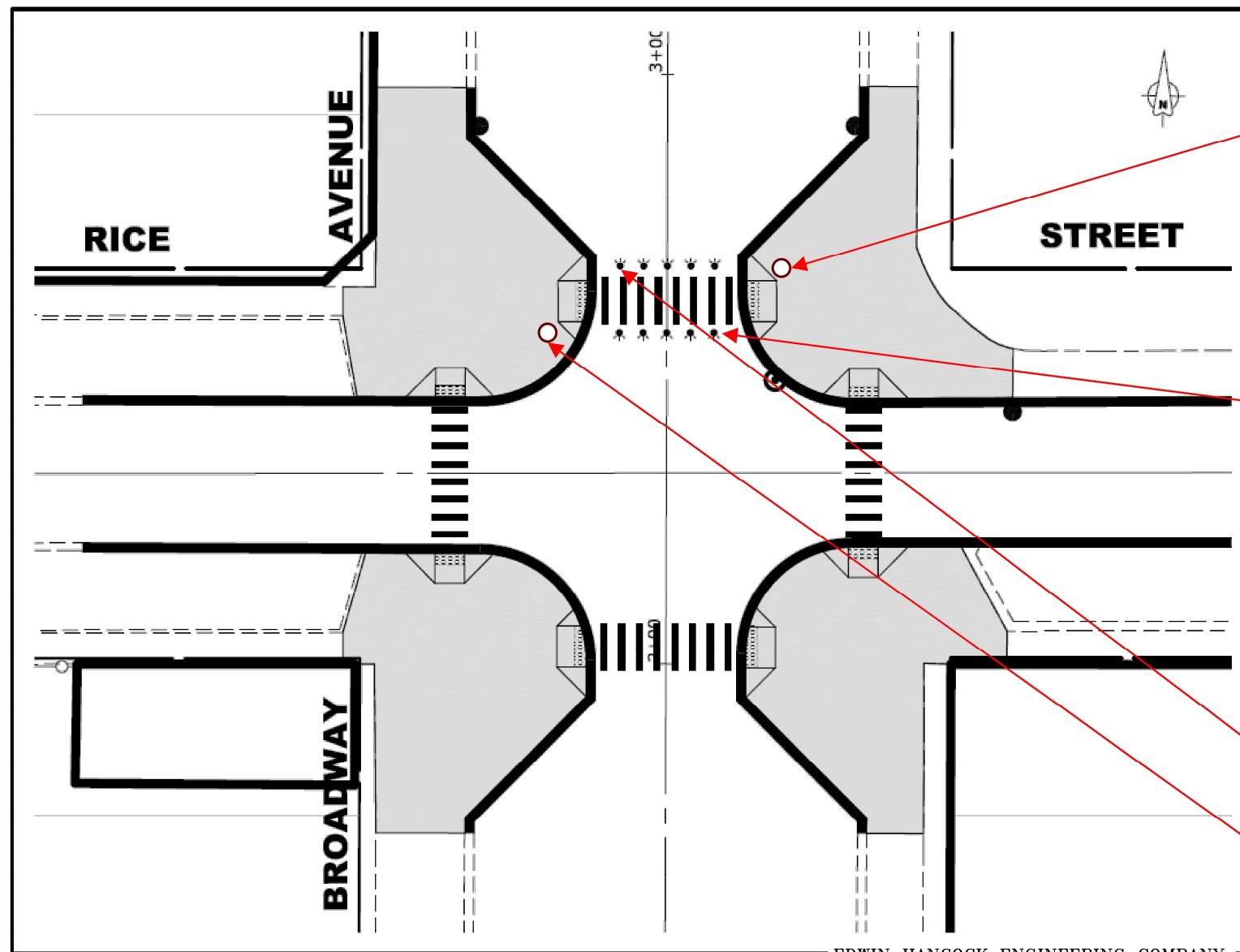
- NOTES:**
- FINISH IS TO BE DETERMINED (POWDERCOAT OR ANODIZED TYP).
 - ROOF IS STANDING SEAM HIP W/ 6" FASCIA
 - GAINSVILLE RAILING (3) SIDED
 - ANCHOR BOLT KIT
 - INVERTED "U" STYLE RACK SHOWN WITH 36" AND 30" SPACING
 - SEE QUOTE FOR OPTIONS
 - DESIGN IS PRELIMINARY, AND INTENDED TO COMPLY WITH SPECIFICATIONS IN ALL ASPECTS, AND PENDING CUSTOMER APPROVAL. ANY DEVIATION FROM SPECIFICATIONS IS UNINTENTIONAL AND MAY BE DISREGARDED: PLEASE CONSULT THE FACTORY.
 - ALL DIMENSIONS TO BE FIELD VERIFIED

BIKE CAPACITY		
RACK SPACING	# OF RACKS	# OF BIKES
15"	4	16

REGISTERED ENGINEER	REVISIONS		 Duo-Gard Industries, Inc. Tel (734) 207-9700 Fax (734) 207-7995 www.duo-gard.com	THIS DRAWING IS PROPRIETARY AND FOR THE SOLE USE OF OUR CUSTOMER AND MAY NOT BE COPIED OR REPRODUCED WITHOUT PRIOR WRITTEN CONSENT FROM DUO-GARD INDUSTRIES, INC. LEAD TIME BEGINS UPON RECEIPT OF SIGNED SHOP DRAWINGS	PROJECT NAME		CUSTOMER SAMPLE									
	0-0-00	A:			BDI	APPROVAL SIGNATURE		DATE		DESCRIPTION						
				X			8' X 18' "SENTINEL" BICYCLE SHELTER, PLAN AND ELEVATION DETAILS									
							PRJTG	PRJTG	DRFTR	DWG DATE	REV1	REV2	SCALE	PAGE	OF	DRWG #
							BDI	SM	GS	9.1.2016			1/4" = 1'-0"	1	1	0818STNL

Drawing file: C:\Temp\AcPublish\53376\Details.dwg Jul 09, 2020 - 9:54am

Melrose Park – IL – Solar powered IRWL/RRFB System
Drawing



Drawing file: W:\Projects\by_Village\Melrose Park\60019242 - Broadway Commuter Improvements\LD\RA\Drawings Set\Drawings_2020.dwg Map 28, 2020 - 4:46pm

EDWIN HANCOCK ENGINEERING COMPANY

Push Button, 12V Beacon Wire
144081



MEH – 5/7/2020 – Rev. 6/8/2020 MEH, Rev. 7/6/2020 MEH,
Rev. 8/19/2020 MEH

Drawing file: W:\Projects\by_Village\Melrose Park\60019242 - Broadway Commuter Improvements\LD\RA\Drawings Set\Drawings_2020.dwg Aug 20, 2020 - 2:04pm



100+ Years of
Experience
Civil Engineers
Municipal Consultants
Established 1911

7700 Roosevelt Road
Woodstock, IL 60191-2700
Phone: 708.665.0300
www.hancock.com

DESIGNED	-	REVISED	-
DRAWN	DMM, SFB	REVISED	-
CHECKED	-	REVISED	-
DATE	7-10-20	REVISED	-

STATE OF ILLINOIS
DEPARTMENT OF TRANSPORTATION

JOB SPECIFIC DETAILS

SCALE: NONE SHEET NO. 2 OF 2 SHEETS STA. - TO STA. -

F.A.U. RTE.	SECTION	COUNTY	TOTAL SHEETS	SHEET NO.
-	17-00132-00-MS	COOK	25	21
CONTRACT NO. 61G77				
FED. ROAD DIST. NO. 1 ILLINOIS FED. AID PROJECT				

E.H.E. PROJECT NO. 600-19-24201



VILLAGE HALL

AUGUSTA

WALTON

IOWA

AVENUE

25TH

LAKE

RICE

D.1

↑ Downtown Melrose Park Public Parking Metra
← Library

24TH

23RD
MAIN

22ND

21ST

20TH

D.4

↑ Police Metra Bike Parking
← Metra Parking

D.3

↑ Bulgar Park
Library →

CHICAGO

13TH

BROADWAY

↑ Library Bulgar Park

↑ Downtown Melrose Park Public Parking Library
Metra Parking →

STREET

SUPERIOR

24TH

23RD

22ND

21ST

20TH

D.5

PI.1

↑ Downtown Melrose Park Public Parking Library
Metra Parking →

17TH

16TH

15TH

14TH

13TH

C. & N. W. R. R.

SIGN TYPES:

- D.5 DIRECTIONAL SIGN (QUANTITY: 5)
- PI.1 SIGN PANEL - TYPE 1 (SPECIAL) (QUANTITY: 2)



WAYFINDING SIGNAGE PLAN

Drawing file: W:\Projects_by_Village\Melrose Park\60019242 - Broadway Commuter Improvements_CIMQ-RTA_Details.dwg Jul 31, 2020 - 2:03pm



100 Years of
Engineering
Civil Engineers
Municipal Consultants
Established 1911
1900 Roosevelt Road
Waukegan, IL 60087-2700
Phone: 708.865.0300
www.hancock.com

DESIGNED - -	REVISED - -
DRAWN - DMM, SFB	REVISED - -
CHECKED - -	REVISED - -
DATE - 7-10-20	REVISED - -

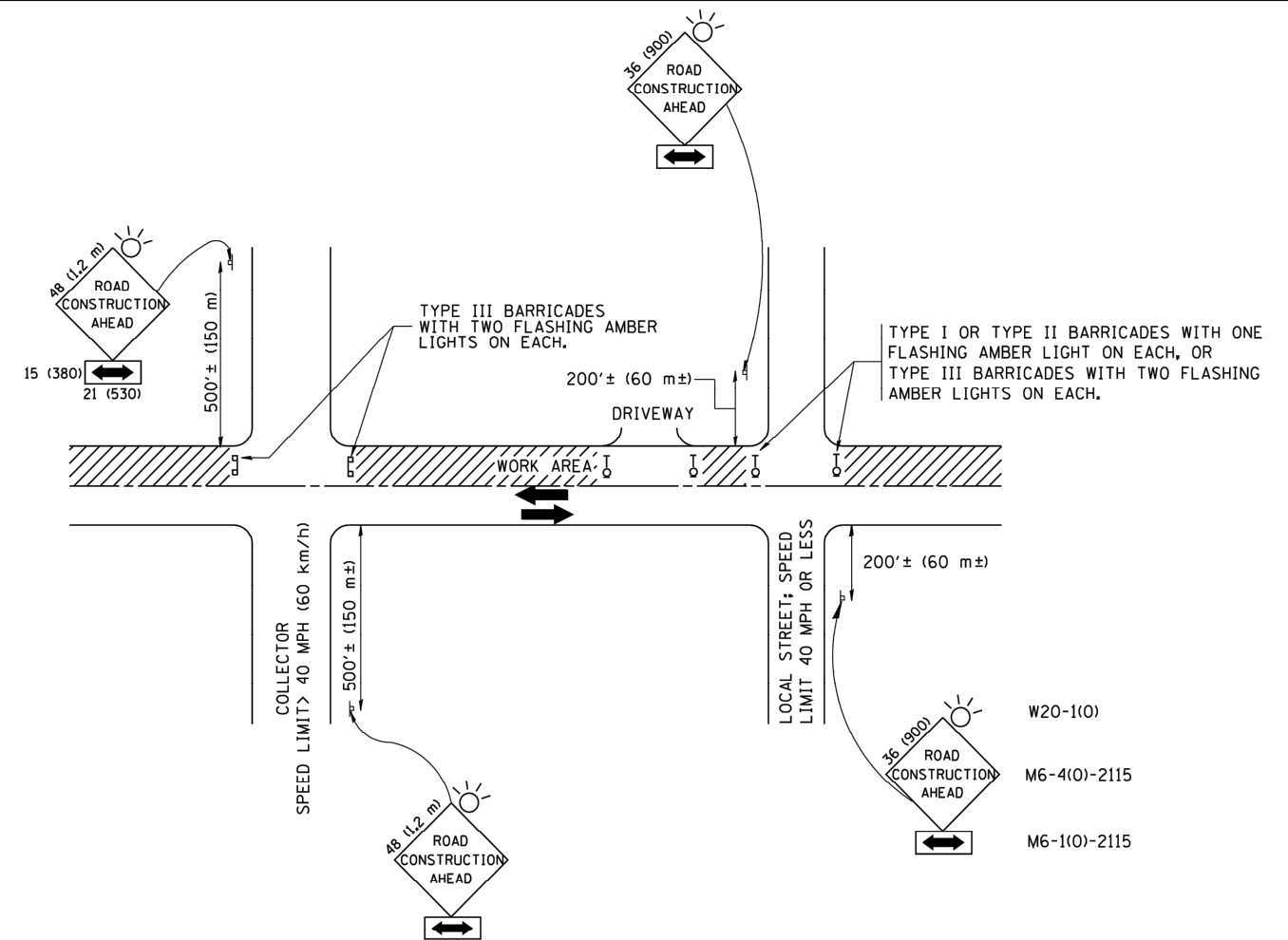
STATE OF ILLINOIS
DEPARTMENT OF TRANSPORTATION

JOB SPECIFIC DETAILS	
SCALE: NONE	SHEET NO. 2 OF 2 SHEETS
STA. -	TO STA. -

F.A.U. RTE.	SECTION	COUNTY	TOTAL SHEETS	SHEET NO.
-	17-00132-00-MS	COOK	25	22
CONTRACT NO. 61G77				
FED. ROAD DIST. NO. 1 ILLINOIS FED. AID PROJECT				

E.H.E. PROJECT NO. 600-19-24201

Drawing file: C:\Temp\MapPublish_575604\DOT_Standard.dwg Jul 09, 2020 - 1:55pm



TRAFFIC CONTROL AND PROTECTION FOR SIDE ROADS, INTERSECTIONS, AND DRIVEWAYS

NOTES:

A. FOR NO LANE RESTRICTION ON THE SIDE ROAD OR DRIVEWAYS

1. SIDE ROAD WITH A SPEED LIMIT OF 40 MPH (60 km/h) OR LESS AS SHOWN ON THE DRAWING AND AS DIRECTED BY THE ENGINEER:
 - a) ONE ROAD CONSTRUCTION AHEAD SIGN 36 x 36 (900x900) WITH A FLASHER AND FLAG MOUNTED ON IT APPROXIMATELY 200' (60 m) IN ADVANCE OF THE MAIN ROUTE.
 - b) THE CLOSED PORTION OF THE MAIN ROUTE SHALL BE PROTECTED BY BLOCKING WITH TYPE I, TYPE II OR TYPE III BARRICADES, 1/3 OF THE CROSS SECTION OF THE CLOSED PORTION.
2. SIDE ROAD WITH A SPEED LIMIT GREATER THAN 40 MPH (60 km/h) AS SHOWN ON THE DRAWING AND AS DIRECTED BY THE ENGINEER:
 - a) ONE ROAD CONSTRUCTION AHEAD SIGN 48 x 48 (1.2 m x 1.2 m) WITH A FLASHER MOUNTED ON IT APPROXIMATELY 500' (150 m) IN ADVANCE OF THE MAIN ROUTE.
 - b) THE CLOSED PORTION OF THE MAIN ROUTE SHALL BE PROTECTED BY BLOCKING WITH TYPE III BARRICADES, 1/2 OF THE CROSS SECTION OF THE CLOSED PORTION.
3. WHEN THE SIDE ROAD LIES BETWEEN THE BEGINNING OF THE MAINLINE SIGNING AND THE WORK ZONE, A SINGLE HEADED ARROW (M6-1) SHALL BE USED IN LIEU OF THE DOUBLE HEADED ARROW (M6-4).

B. FOR A LANE CLOSURE ON A SIDE ROAD OR DRIVEWAY:

USE APPLICABLE PORTIONS OF THE TYPICAL APPLICATION OF TRAFFIC CONTROL DEVICES (STD. 701501, STD. 701606 OR THE APPROPRIATE STANDARD). THE SPACING OF SIGNS AND BARRICADES SHALL BE ADJUSTED FOR FIELD CONDITIONS AS DIRECTED BY THE ENGINEER. THE DIRECTIONAL ARROW SHALL BE COVERED OR REMOVED WHEN NO LONGER CONSISTENT WITH THE SIDE ROAD LANE CLOSURE.

C. ADVANCE WARNING SIGNS ARE TO BE OMITTED ON DRIVEWAY UNLESS OTHERWISE NOTED.

D. THE TRAFFIC CONTROL AND PROTECTION FOR SIDE ROADS, INTERSECTIONS, AND DRIVEWAYS SHALL BE INCIDENTAL TO THE COST OF SPECIFIED TRAFFIC CONTROL STANDARDS OR ITEMS.

All dimensions are in millimeters (inches) unless otherwise shown.

FILE NAME = W:\diststd\22x34\tcl0.dgn	USER NAME = gaglianobt	DESIGNED - LHA	REVISED - J. OBERLE 10-18-95
		DRAWN -	REVISED - A. HOUSEH 03-06-96
PLOT SCALE = 500.000' / IN.		CHECKED -	REVISED - A. HOUSEH 10-15-96
PLOT DATE = 1/4/2008		DATE - 06-89	REVISED - T. RAMMACHER 01-06-00

**STATE OF ILLINOIS
DEPARTMENT OF TRANSPORTATION**

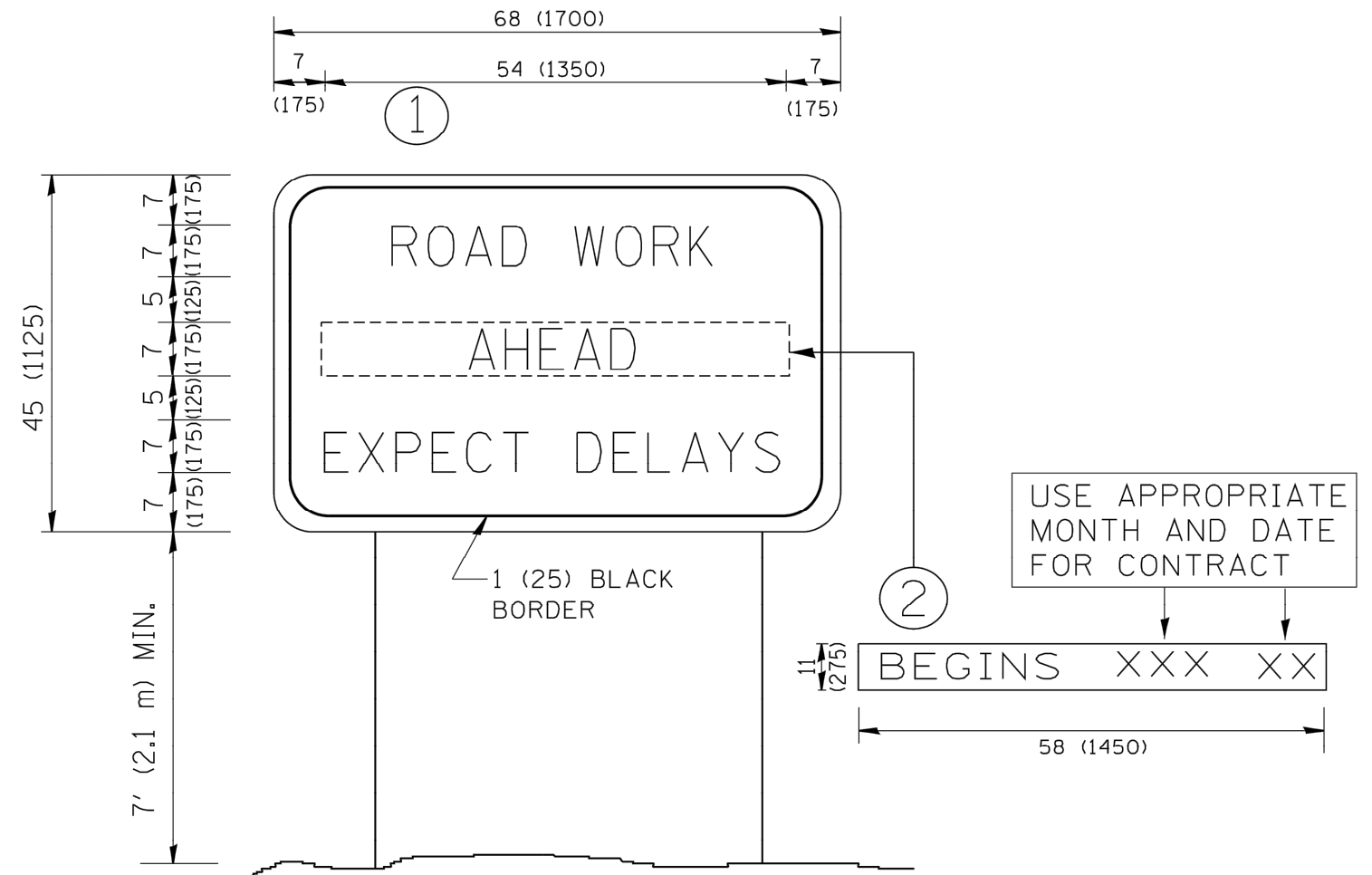
**TRAFFIC CONTROL AND PROTECTION FOR
SIDE ROADS, INTERSECTIONS, AND DRIVEWAYS**

SCALE: NONE SHEET NO. 1 OF 1 SHEETS STA. TO STA.

F.A.U. RTE.	SECTION	COUNTY	TOTAL SHEETS	SHEET NO.
-	17-00132-00-MS	COOK	25	23
TC-10			CONTRACT NO. 61G77	
FED. ROAD DIST. NO. 1 ILLINOIS			FED. AID PROJECT	

E.H.E. PROJECT NO. 600-19-24201

Drawing file: W:\Projects_by_Village\Metrose Park\60019242 - Broadway Commuter Improvements_CMAQ-RFA\DOT_Standard.dwg Jul 10, 2020 - 4:39pm



NOTES:

1. USE BLACK LETTERING ON ORANGE BACKGROUND.
2. ERECT SIGNS IN ADVANCE OF THE LOCATION FOR THE "ROAD CONSTRUCTION AHEAD" SIGN AT LOCATIONS AS DIRECTED BY THE ENGINEER.
3. ERECT SIGN ① WITH INSTALLED PANEL ② ONE WEEK PRIOR TO THE START OF CONSTRUCTION.
4. REMOVE PANEL ② SOON AFTER THE START OF CONSTRUCTION.
5. SEE SPECIAL PROVISION FOR "TEMPORARY INFORMATION SIGNING" FOR ADDITIONAL INFORMATION.
6. ONE SIGN ASSEMBLY EQUALS 25.70 SQ. FT. (2.3 SQ. M.)
7. SHALL BE PAID FOR AS TEMPORARY INFORMATION SIGNING.

ALL DIMENSIONS ARE IN INCHES (MILLIMETERS)
UNLESS OTHERWISE SHOWN.

FILE NAME = W:\diststd\22x34\tc22.dgn	USER NAME = gegl1enobt	DESIGNED - DRAWN -	REVISED - R. MIRS 09-15-97 REVISED - R. MIRS 12-11-97
PLOT SCALE = 50.000' / IN.	CHECKED -	REVISED - T. RAMMACHER 02-02-99	
PLOT DATE = 1/4/2008	DATE -	REVISED - C. JUCIUS 01-31-07	

**STATE OF ILLINOIS
DEPARTMENT OF TRANSPORTATION**

**ARTERIAL ROAD
INFORMATION SIGN**

SCALE: NONE SHEET NO. 1 OF 1 SHEETS STA. TO STA.

F.A.U. RTE.	SECTION	COUNTY	TOTAL SHEETS	SHEET NO.
-	17-00132-00-MS	COOK	25	25
TC-22			CONTRACT NO. 61G77	
FED. ROAD DIST. NO. 1 ILLINOIS			FED. AID PROJECT	