

1	COVER SHEET & INDEX OF SHEETS
2	GENERAL INFORMATION, NOTES
3	SUMMARY OF QUANTITIES
4-5	DETAILS
6	SCHEDULE OF QUANTITIES
7	TRAFFIC CONTROL PLAN
8-9	REMOVAL PLAN
10 - 13	PLAN AND PROFILE
14	LIGHTING ELECTRICAL CIRCUIT LAYOUT
15 - 16	LANDSCAPING & PAVEMENT MARKING PLAN

11-06-2020 LETTING ITEM 120

STATE OF ILLINOIS
DEPARTMENT OF TRANSPORTATION

PROPOSED HIGHWAY PLANS

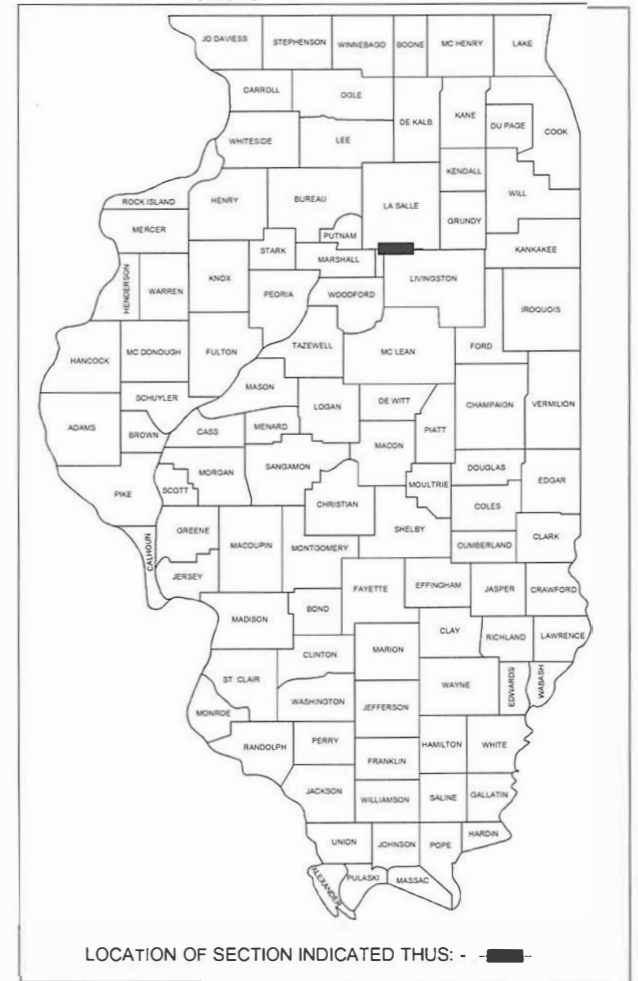
FAP 0653 (MAIN STREET / IL ROUTE 18)
(FROM VERMILION RIVER TO WASSON ST)

CITY OF STREATOR
SECTION 18-00100-00-LT
PROJECT NO. XFF8(387)
STREETSCAPE PROJECT
LaSALLE COUNTY

C-93-022-19

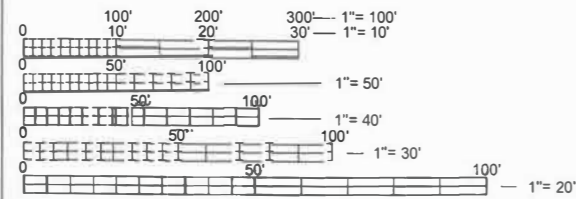
FAP RTE	SECTION	COUNTY	TOTAL SHEETS	SHEET NO
0653	18-00100-00-LT	LaSalle	16	1
		ILLINOIS	CONTRACT NO.	87717

XFF8(387)
C-93-022-19



HIGHWAY STANDARDS

STANDARD SYMBOLS, ABBREVIATIONS AND PATTERNS	000001-07
TEMPORARY EROSION CONTROL SYSTEMS	280001-07
PERPENDICULAR CURB RAMPS FOR SIDEWALKS	424001-11
CORNER PARALLEL CURB RAMPS FOR SIDEWALKS	424011-04
CONCRETE CURB TY-B & COMBINATION CONCRETE CURB & GUTTER	606001-07
OFF ROAD OPERATIONS, MULTILANE, 15' TO 24' FROM PAVEMENT EDGE	701101-05
URBAN LANE CLOSURE, MULTILANE, 1W OR 2W WITH NON TRAVERSABLE MEDIAN	701601-09
SIDEWALK, CORNER OR CROSSWALK CLOSURE	701801-06
TRAFFIC CONTROL DEVICES	701901-08
TYPICAL PAVEMENT MARKINGS	780001-05
LUMINAIRE WIRING IN POLE	821101-02
LIGHT POLE FOUNDATION	836001-04
TYPICAL APPLICATION OF TRAFFIC CONTROL DEVICES FOR CONSTRUCTION ON RURAL LOCAL HIGHWAYS	BLR 22-7



FULL SIZE PLANS HAVE BEEN PREPARED USING STANDARD ENGINEERING SCALES. REDUCED SIZED PLANS WILL NOT CONFORM TO STANDARD SCALES. IN MAKING MEASUREMENTS ON REDUCED PLANS, THE ABOVE SCALES MAY BE USED.

J.U.L.I.E.
JOINT UTILITY LOCATION INFORMATION FOR EXCAVATION
1-800-892-0123
OR 811

LOCATION MAP - CITY OF STREATOR
TOTAL LENGTH OF PROJECT = 4,125.186 FEET = 0.781 MILES
NET LENGTH OF PROJECT = 4,125.186 FEET = 0.781 MILES

CITY OF STREATOR (815) 672-2517
PROJECT ENGINEER - JEREMY PALM, P.E.

CONTRACT NO. 87717

ROADWAY DATA (MAIN ST, IL ROUTE 18)

ROUTE CLASSIFICATION:	OTHER PRINCIPAL ARTERIAL
FACILITY CLASS:	II (2-LANE)
CURRENT YEAR ADT:	3350 (YEAR 2018)
DESIGN YEAR ADT:	4000 (YEAR 2038)
DESIGN GUIDELINES:	URBAN
DESIGN SPEED:	25 MPH

ROADWAY DATA (MONROE STREET)

ROUTE CLASSIFICATION:	LOCAL STREET
FACILITY CLASS:	II (2-LANE)
CURRENT YEAR ADT:	500 (YEAR 2018)
DESIGN YEAR ADT:	500 (YEAR 2038)
DESIGN GUIDELINES:	URBAN
DESIGN SPEED:	25 MPH

ROADWAY DATA (VERMILION STREET)

ROUTE CLASSIFICATION:	LOCAL STREET
FACILITY CLASS:	II (2-LANE)
CURRENT YEAR ADT:	500 (YEAR 2018)
DESIGN YEAR ADT:	500 (YEAR 2038)
DESIGN GUIDELINES:	URBAN
DESIGN SPEED:	25 MPH



Jeremy E. Palm
SIGNATURE

DATE: 7-10-20
EXPIRATION 11/30/2021

STATE OF ILLINOIS
DEPARTMENT OF TRANSPORTATION
DIVISION OF HIGHWAYS

APPROVED 7-13-2020
Gene D. Landrum
CITY OF STREATOR, MAYOR

PASSED 9-1-2020
Muhammad Ahmad
DISTRICT 3 LOCAL ROADS AND STREETS ENGINEER

RELEASING 9-1-2020
Muhammad Ahmad
FOR BID LIMITED REVIEW REGION TWO ENGINEER

PRINTED BY THE AUTHORITY
OF THE STATE OF ILLINOIS
FINAL

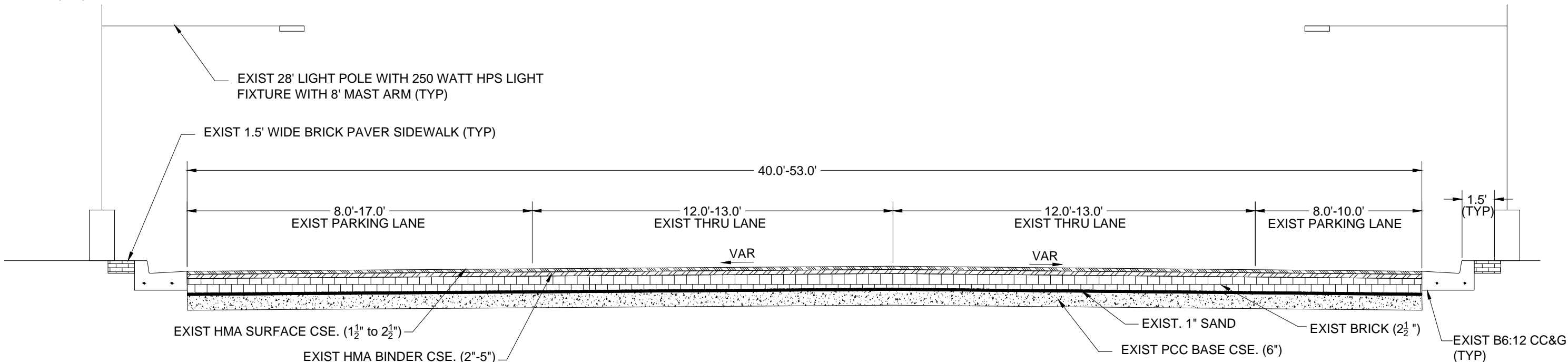
GENERAL NOTES

- ALL ELEVATIONS SHOWN IN THE PLANS ARE BASED ON USGS MEAN SEA LEVEL DATUM.
- ANY REFERENCE TO A STANDARD IN THESE PLANS SHALL BE INTERPRETED TO MEAN THE EDITION AS INDICATED BY THE SUBNUMBER LISTED IN THE INDEX OF SHEETS OF THE COPY OF THE STANDARD INCLUDED IN THESE PLANS.
- THE FOLLOWING RATES OF APPLICATION HAVE BEEN USED IN CALCULATING PLAN QUANTITIES:

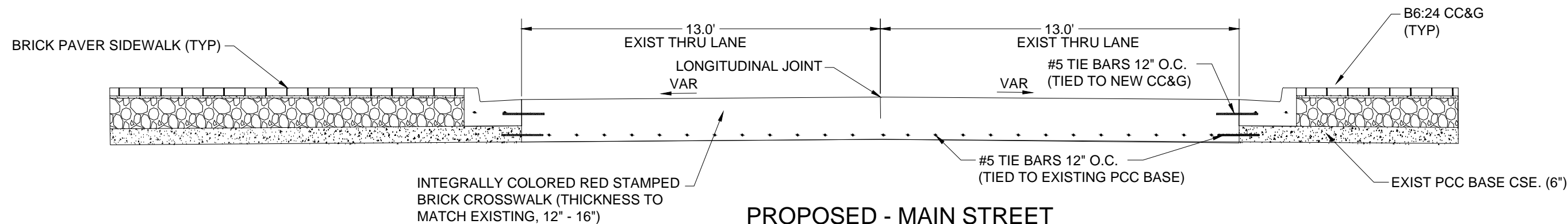
GRANULAR MATERIALS	2.05 TONS / CU YD
BITUMINOUS PRIME COAT	0.10 GAL / SQ YD
BITUMINOUS CONCRETE SURFACE COURSE	112 LBS / SQ YD / IN
BITUMINOUS CONCRETE BINDER COURSE	112 LBS / SQ YD / IN
- BEFORE ORDERING PIPE CULVERTS OR STORM SEWERS, THE CONTRACTOR SHALL CONSULT THE ENGINEER FOR EXACT LENGTHS.
- THE ENGINEER SHALL BE THE SOLE JUDGE CONCERNING CURING TIME FOR THE VARIOUS BITUMINOUS LIFTS.
- A MINIMUM OF FOUR SAND BAGS SHALL BE USED TO STABILIZE REQUIRED TYPE III BARRICADES.

GENERAL NOTES

- THE THICKNESS OF BITUMINOUS MIXTURES SHOWN ON THE PLANS IS THE NOMINAL THICKNESS. DEVIATIONS FROM THE NOMINAL THICKNESS WILL BE PERMITTED WHEN SUCH DEVIATIONS OCCUR DUE TO IRREGULARITIES IN THE EXISTING SURFACE OR BASE ON WHICH THE BITUMINOUS MIXTURE IS PLACED.
- ALL ELEVATIONS SHOWN IN THE PLANS ARE TOP OF PAVEMENT GRADES UNLESS OTHERWISE NOTED.
- ALL SAWCUTTING OF EXISTING PAVEMENT SHALL BE CONSIDERED INCIDENTAL TO THE CONTRACT. THE MINIMUM SAW CUT DEPTH IN THE PAVEMENT SHALL BE 1½" UNLESS OTHERWISE NOTED ON THE PLANS.
- THE CONTRACTOR SHALL REMOVE, STORE, AND RE-ERECT EXISTING ROAD SIGNS AND MAILBOXES. THIS WORK SHALL BE INCIDENTAL TO THE CONTRACT.
- SOIL EROSION AND SEDIMENT CONTROL SHALL BE IN ACCORDANCE WITH THE APPLICABLE PORTIONS OF THE ILLINOIS ENVIRONMENTAL PROTECTION AGENCY'S "STANDARD SPECIFICATIONS FOR SOIL EROSION AND SEDIMENT CONTROL" DATED 1981.



EXISTING - MAIN STREET
STA: 0+00 TO 24+00



PROPOSED - MAIN STREET
CROSS WALK LOCATIONS

FINAL

FILE NAME =	USER NAME = JEREMY E. PALM	DESIGNED - JEP	REVISED - IDOT COMMENT 3-26-20
FILELS		DRAWN - JCL	REVISED -
	PLOT SCALE = 0.5	CHECKED - JEP	REVISED -
	PLOT DATE = 7/13/2020	DATE - 11/15/18	REVISED -

STATE OF ILLINOIS
DEPARTMENT OF TRANSPORTATION

Notes & Quantities

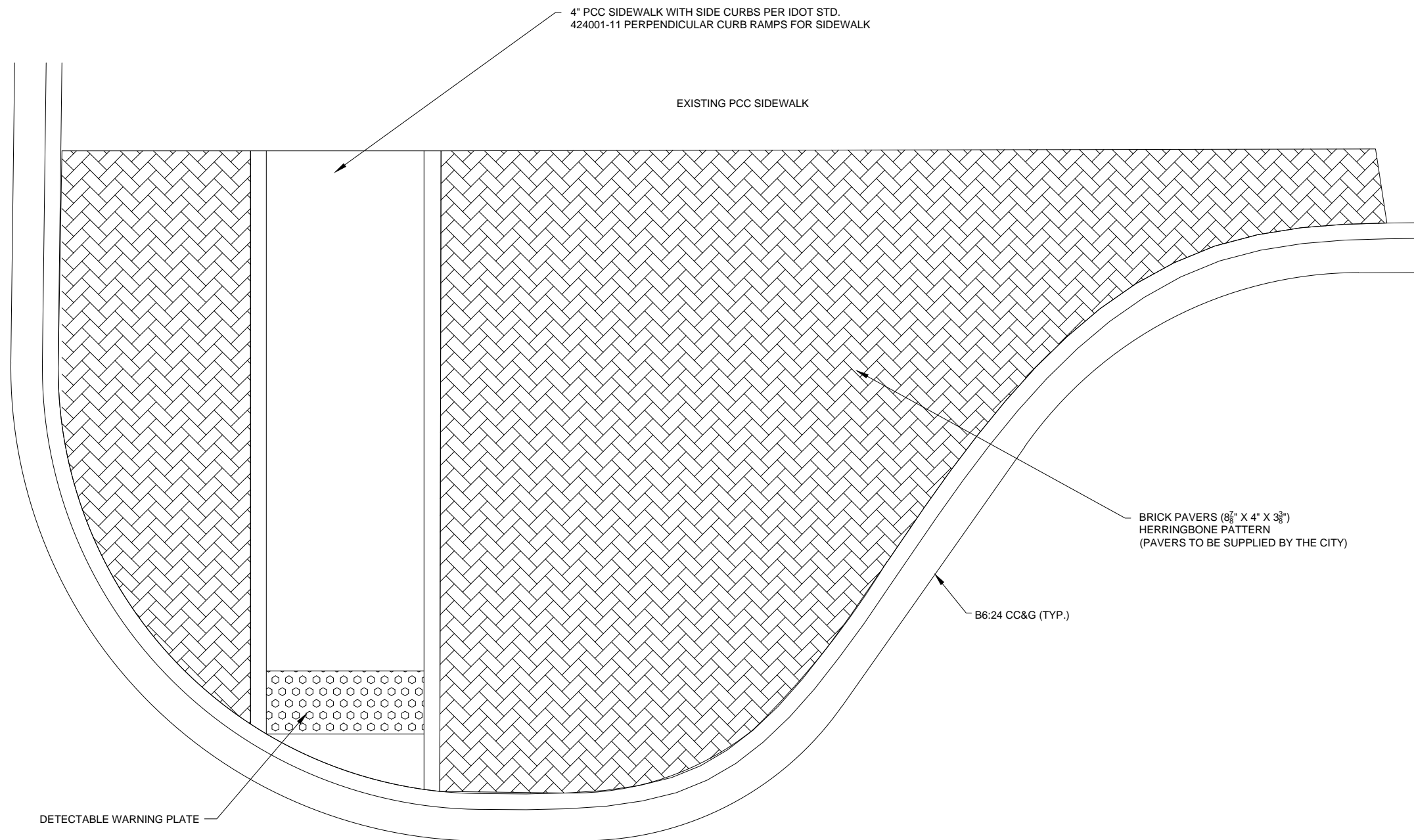
SCALE: N/A SHEET NO. 2 OF 16 SHEETS STA. TO STA.

F.A. FAP RTE.	SECTION	COUNTY	TOTAL SHEETS	SHEET NO.
0653	18-00100-00-LT	LaSalle	16	2
CONTRACT NO.			87717	
ILLINOIS FED. AID PROJECT				

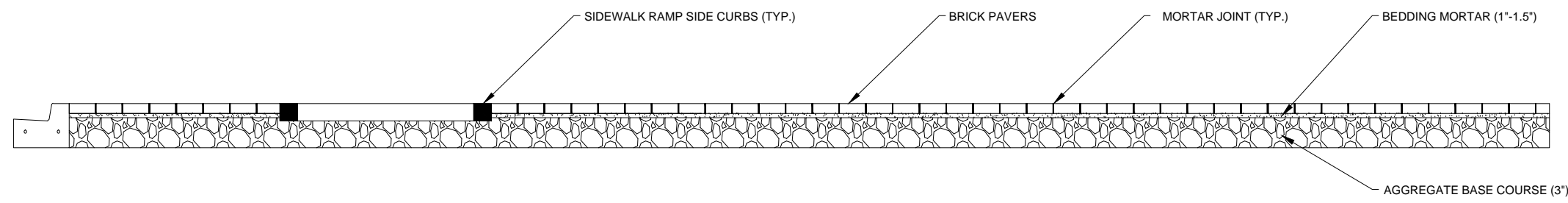
					CONSTRUCTION CODE 0028	
					ITEP FUNDS	
CODE NO.	DESCRIPTION	UNIT	TOTAL QUANTITY	Δ - SPECIALTY X - (SEE SPECIAL PROVISION)	50% STATE 50% CITY	80% STATE 20% CITY
					HIGHWAY LIGHTING URBAN	ROADWAY URBAN
35100100	AGGREGATE BASE COURSE	TON	235.0			235.0
42400100	PORTLAND CEMENT CONCRETE SIDEWALK 4 INCH	SQ FT	1745.0			1745.0
42400800	DETECTABLE WARNINGS	SQ FT	112.0	X		112.0
44000100	PAVEMENT REMOVAL	SQ YD	515.0			515.0
44000500	COMBINATION CURB AND GUTTER REMOVAL	FOOT	577.0	X		577.0
44000600	SIDEWALK REMOVAL	SQ FT	9915.0			9915.0
60605100	COMBINATION CONCRETE CURB AND GUTTER, TYPE B-6.24 (ABUTTING EXISTING PAVEMENT)	FOOT	738.0	X		738.0
78000400	THERMOPLASTIC PAVEMENT MARKING - LINE 6"	FOOT	491.0	Δ		491.0
81702450	ELECTRIC CABLE IN CONDUIT, 600V (XLP-TYPE USE) 3-1/C NO. 10	FOOT	270.0	Δ	270.0	
82110004	LUMINAIRE, LED, ROADWAY, OUTPUT DESIGNATION D	EACH	27.0	Δ, X	27.0	
82110006	LUMINAIRE, LED, ROADWAY, OUTPUT DESIGNATION F	EACH	27.0	Δ, X	27.0	
83600200	LIGHT POLE FOUNDATION, 24" DIAMETER	FOOT	135.0	Δ	135.0	
84200500	REMOVAL OF LIGHTING UNIT, SALVAGE	EACH	27.0	Δ, X	27.0	
84200804	REMOVAL OF POLE FOUNDATION	EACH	27.0	Δ		27.0
LR430040	PAVING BRICK SIDEWALK	SQ YD	1378.0	X		1378.0
X0300635	PLANTER	EACH	37.0	X		37.0
X6062213	STAMPED COLORED PORTLAND CEMENT CONCRETE MEDIAN SURFACE 13 INCH	SQ FT	1420.0	X		1420.0
X7010228	TRAFFIC CONTROL AND PROTECTION, STANDARD 701601, SPECIAL	L SUM	1.0			1.0
X8300001	LIGHT POLE, SPECIAL	EACH	27.0	Δ, X	27.0	

FINAL

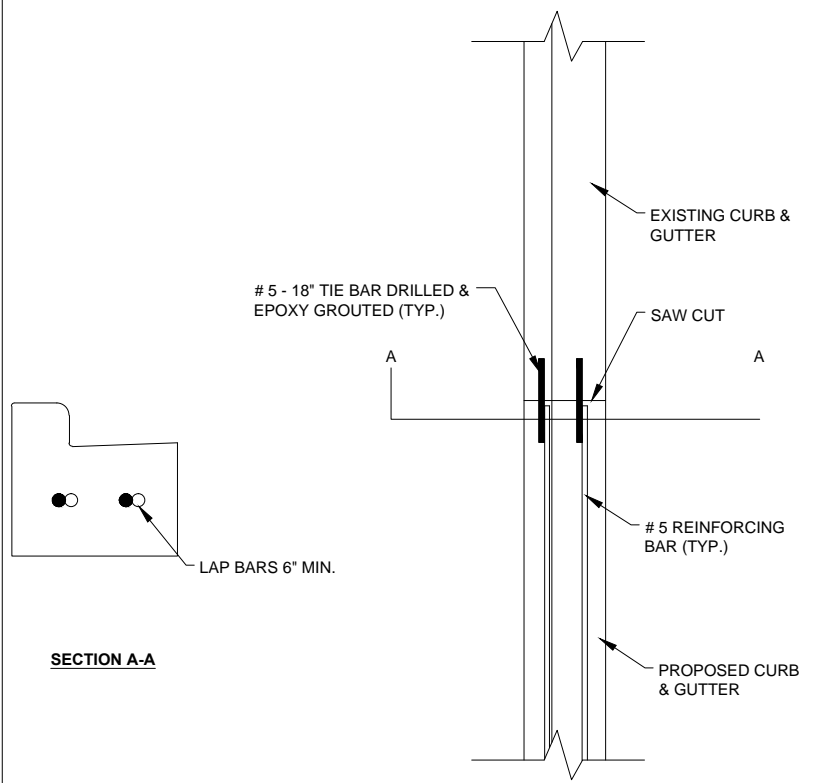
FILE NAME =	USER NAME = JEREMY E. PALM	DESIGNED - JEP	REVISED - IDOT COMMENT 3-26-20	STATE OF ILLINOIS DEPARTMENT OF TRANSPORTATION	SUMMARY OF QUANTITIES			F.A. FAP RTE. 0653	SECTION 18-00100-00-LT	COUNTY LaSalle	TOTAL SHEETS 16	SHEET NO. 3
\$FILES		DRAWN - JCL	REVISED - SCOPE REVISION-7-1-20					SCALE: N/A	SHEET NO. 3 OF 16 SHEETS	STA. TO STA.	CONTRACT NO. 87717	
	PLOT SCALE = 0.5	CHECKED - JEP	REVISED -		ILLINOIS FED. AID PROJECT							
	PLOT DATE = 7/13/2020	DATE - 11/15/18	REVISED -									



BRICK PAVER SIDEWALK DETAIL



BRICK PAVER SIDEWALK ELEVATION



TYPICAL CURB REINFORCEMENT

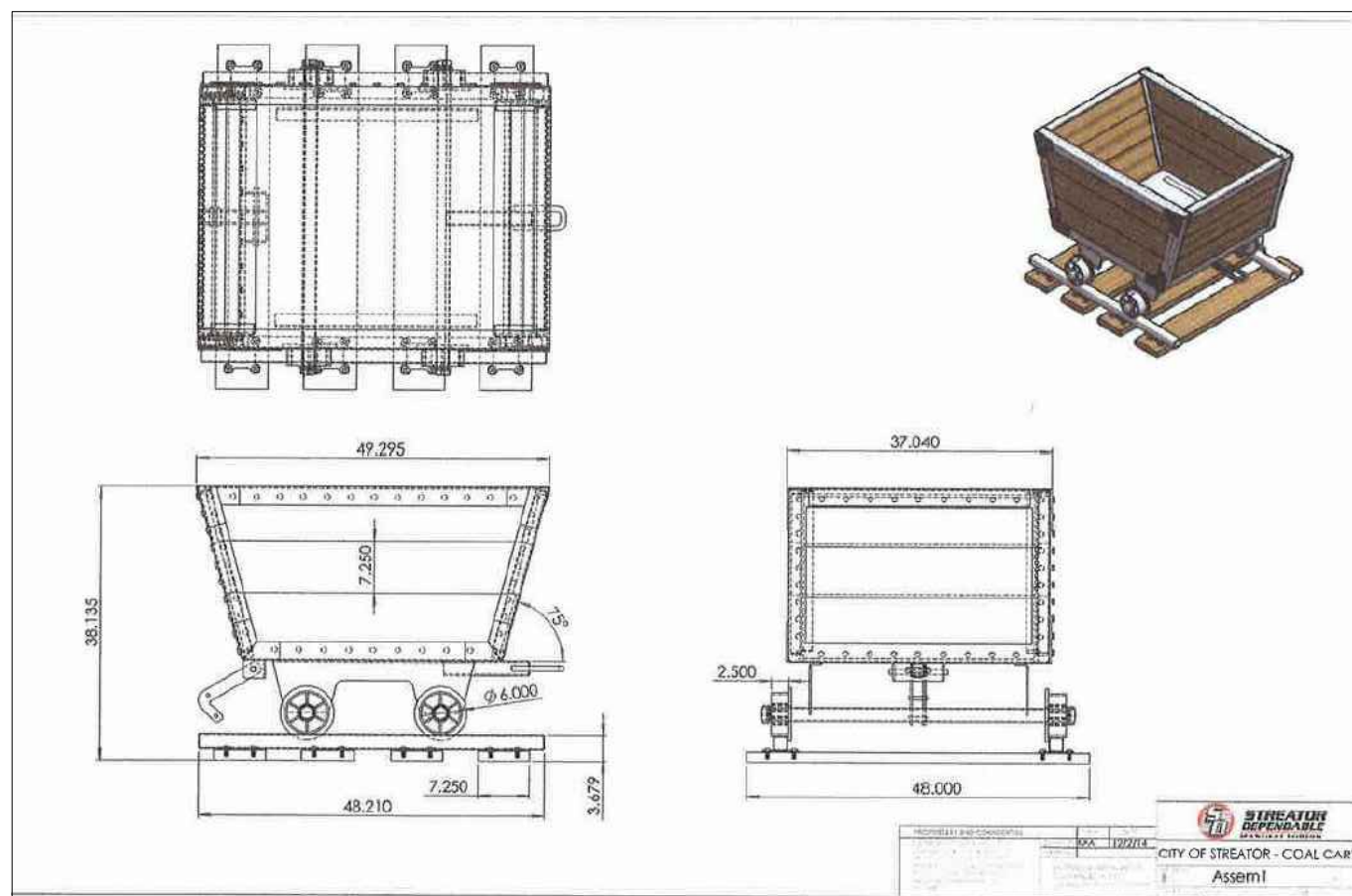
FINAL

FILE NAME =	USER NAME = JEREMY E. PALM	DESIGNED - JEP	REVISED - IDOT COMMENT 3-26-20
\$FILES\$		DRAWN - JCL	REVISED - _____
	PLOT SCALE = 0.5	CHECKED - JEP	REVISED - _____
	PLOT DATE = 7/13/2020	DATE - 11/15/18	REVISED - _____

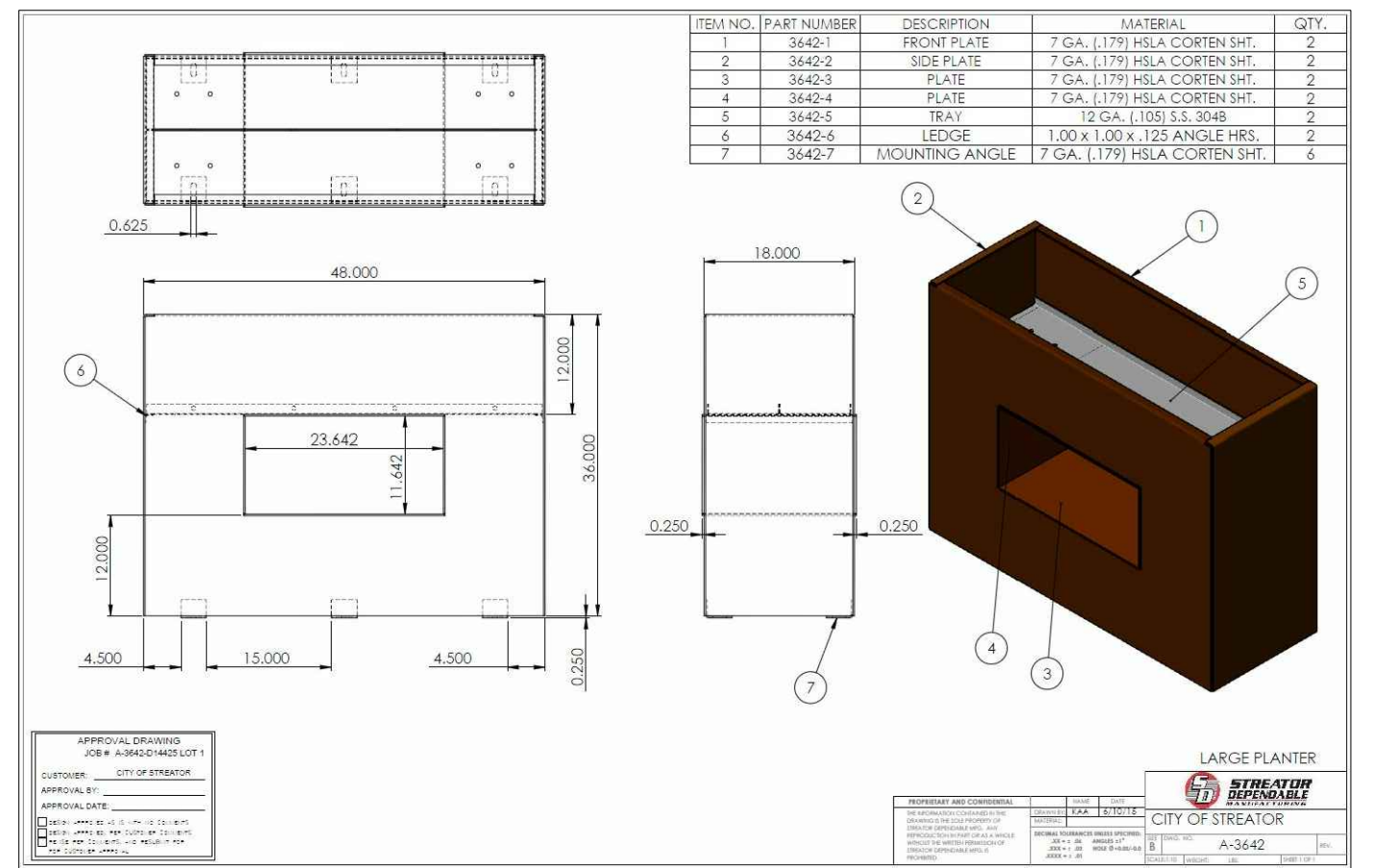
STATE OF ILLINOIS
DEPARTMENT OF TRANSPORTATION

Details	
SCALE: N/A	SHEET NO. 4 OF 16 SHEETS
STA.	TO STA.

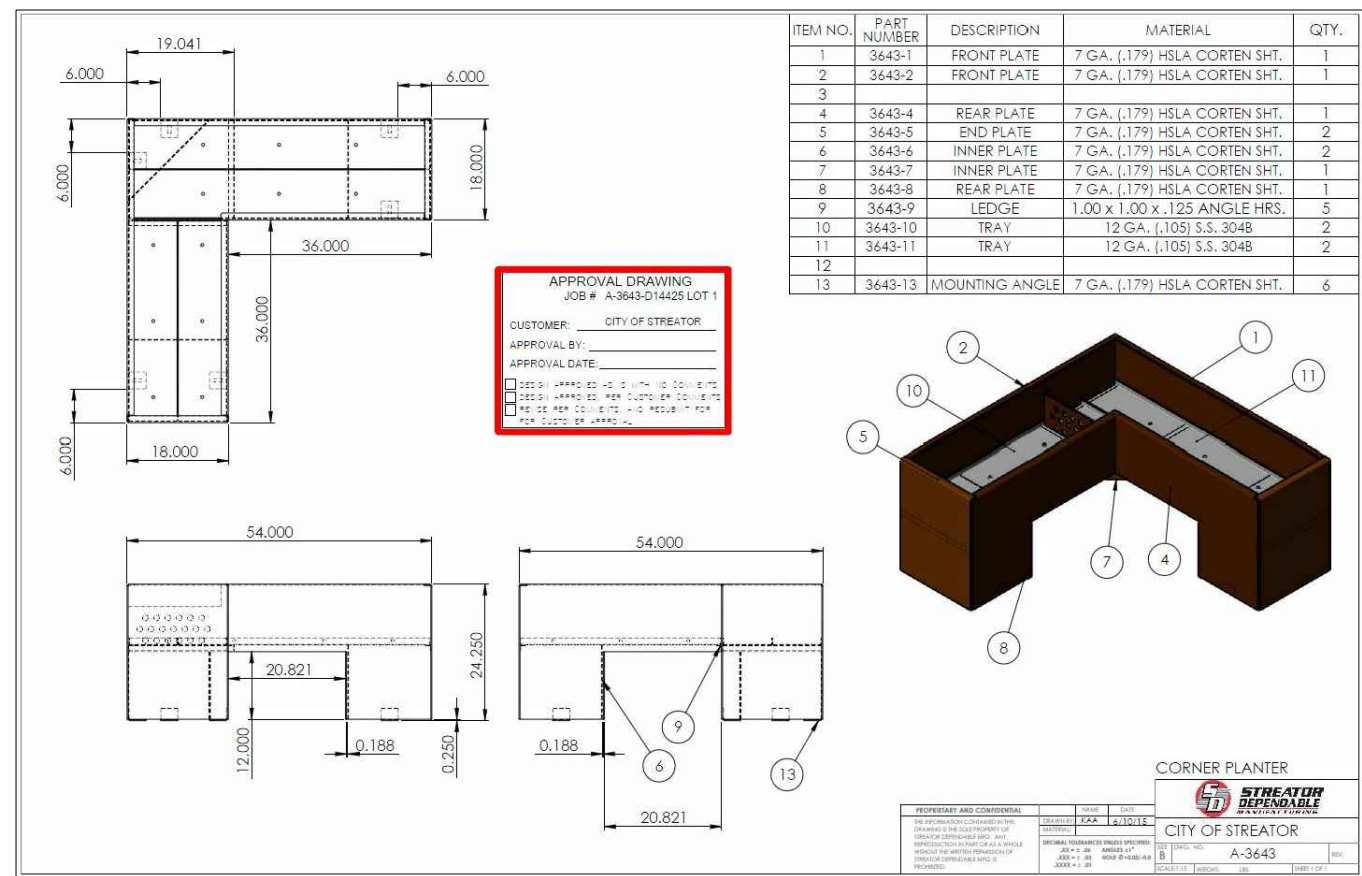
F.A. FAP RTE. 0653	SECTION 18-00100-00-LT	COUNTY LaSalle	TOTAL SHEETS 16	SHEET NO. 4
CONTRACT NO. 87717			ILLINOIS FED. AID PROJECT	



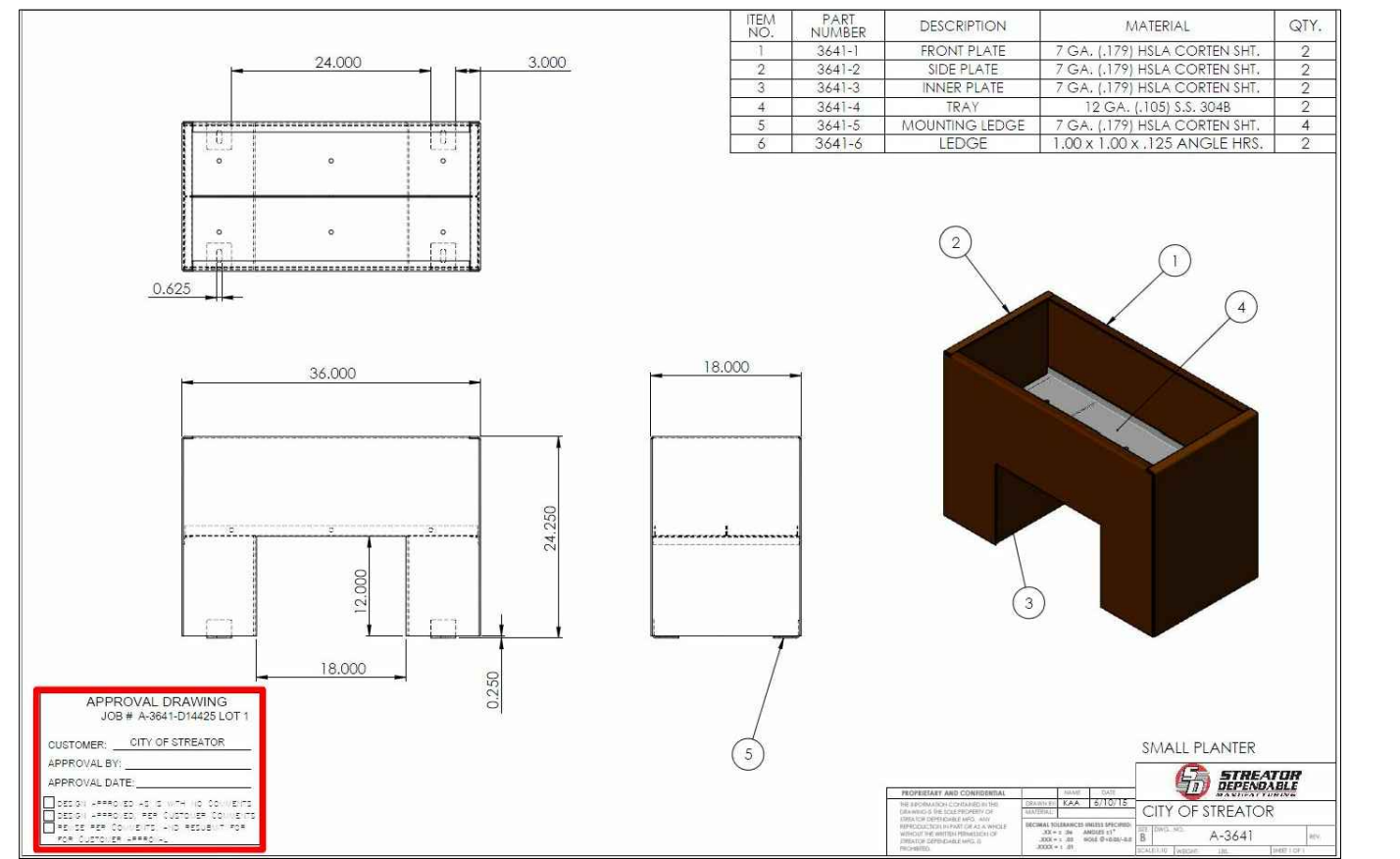
COAL CART PLANTER



LARGE PLANTER



CORNER PLANTER



SMALL PLANTER

STATE OF ILLINOIS
DEPARTMENT OF TRANSPORTATION

Details

F.A. FAP RTE.	SECTION	COUNTY	TOTAL SHEETS	SHEET NO.
0653	18-00100-00-LT	LaSalle	16	5
CONTRACT NO. 87717				
ILLINOIS FED. AID PROJECT				

FILE NAME	USER NAME	DESIGNED	REVISED
=	= JEREMY E. PALM	- JEP	-
SFILES\$		DRAWN - JCL	REVISED -
		CHECKED - JEP	REVISED -
		DATE - 11/15/18	REVISED -

SCALE: N/A SHEET NO. 5 OF 16 SHEETS STA. TO STA.

FINAL

STREETLIGHT SCHEDULE						
LOCATION	REMOVAL OF LIGHTING UNIT, SALVAGE	LUMINAIRE, LED, ROADWAY, OUTPUT DESIGNATION F	LUMINAIRE, LED, ROADWAY, OUTPUT DESIGNATION D	LIGHT POLE, 28 FT. M.H., 8 FT. MAST ARM (SPECIAL)	ELECTRIC CABLE IN CONDUIT, 600V (XLP-TYPE USE) 3-1/C NO. 10	LIGHT POLE FOUNDATION (24" DIAMETER)
EA	EA	EA	EA	EA	FT.	FT.
MAIN STREET						
0+43, 18.7' LT	1	1	1	1	10.0	5.0
1+15.5, 25.9' RT	1	1	1	1	10.0	5.0
1+88, 25.5' LT	1	1	1	1	10.0	5.0
2+65.49, 25.5' RT	1	1	1	1	10.0	5.0
3+33, 25.5' LT	1	1	1	1	10.0	5.0
4+25, 25.5' RT	1	1	1	1	10.0	5.0
5+83, 33.5' RT	1	1	1	1	10.0	5.0
6+55.5, 23.5' LT	1	1	1	1	10.0	5.0
7+39, 33.5' RT	1	1	1	1	10.0	5.0
8+11.50, 23.5' LT	1	1	1	1	10.0	5.0
8+84, 33.5' RT	1	1	1	1	10.0	5.0
9+50, 23.5' LT	1	1	1	1	10.0	5.0
10+22.5, 26.0' RT	1	1	1	1	10.0	5.0
11+00, 23.5' LT	1	1	1	1	10.0	5.0
11+67.5, 26.0' RT	1	1	1	1	10.0	5.0
12+45, 23.5' LT	1	1	1	1	10.0	5.0
16+85.5, 25.5' LT	1	1	1	1	10.0	5.0
17+58, 25.5' RT	1	1	1	1	10.0	5.0
18+30, 25.5' LT	1	1	1	1	10.0	5.0
19+10.08, 25.5' RT	1	1	1	1	10.0	5.0
19+80, 25.5' LT	1	1	1	1	10.0	5.0
20+50, 25.5' RT	1	1	1	1	10.0	5.0
21+22.5, 25.5' LT	1	1	1	1	10.0	5.0
22+05, 25.5' RT	1	1	1	1	10.0	5.0
22+67.5, 25.5' LT	1	1	1	1	10.0	5.0
23+49, 25.5' RT	1	1	1	1	10.0	5.0
23+49, 25.5' LT	1	1	1	1	10.0	5.0
TOTAL	27.0	27.0	27.0	27.0	270.0	135.0

PAVEMENT MARKING SCHEDULE	
LOCATION	FT.
THERMOPLASTIC PAVEMENT MARKING LINE - 6" (YELLOW)	
MAIN STREET	
5+73.90', 28.810' LT	43
5+79.93', 24.919' LT	36
8+85.57', 27.743' LT	38
8+91.53', 32.425' LT	46
9+41.73', 17.205' LT	31
9+47.74', 14.150' LT	25
12+53.87', 11.171' RT	25
12+59.83', 14.191' RT	32
16+73.79', 15.585' LT	38
16+79.80', 13.108' LT	29
19+86.61', 14.018' LT	27
19+92.52', 17.383' LT	34
20+39.40', 29.537' RT	46
20+45.49', 22.685' RT	41
TOTAL	491.0

SIDEWALK SCHEDULE					
LOCATION	SIDEWALK REMOVAL SQ. FT.	4" PCC SIDEWALK SQ. FT.	DETECTABLE WARNINGS SQ. FT.	PAVING BRICK SIDEWALK SQ. YD.	STAMPED COLORED PCC MEDIAN SURFACE 13" SQ. FT.
MAIN STREET					
0+32.44, 17.296 LT	49.72			5.5	
0+86.85, 19.318 LT	212.58			23.6	
2+46.00, 23.299 LT	443.62			49.3	
3+76.80, 22.049 LT	262.07			24.1	
4+10.23, 26.832 RT	480.43			53.4	
5+79.91, 27.754 RT		50	8	1.2	231.6
5+80.38, 23.994 LT		65	8	62.6	
7+18.76, 21.730 LT	437.33			65.3	
7+32.66, 35.495 RT	988.11			127.7	
7+62.78, 24.305 LT	425.19			62.3	
8+85.54, 30.699 RT		70	8	58.2	
8+92.02, 24.463 LT		70	8	2.5	248.8
9+47.73, 16.707 RT		70	8	0.7	164.3
9+47.84, 24.626 LT		70	8	0.8	
11+01.31, 28.802 RT	925.53			124.6	
11+01.82, 26.218 LT	886.11			129.9	
12+54.23, 16.750 RT		65	8	0.5	
12+59.70, 24.642 LT		70	8	1.9	168.3
14+62.88, 26.059 RT	692.47			76.9	
14+66.61, 34.792 LT	472.25			52.5	
16+79.79, 15.704 RT		80	8	2.1	
16+79.89, 27.505 LT		40	8		191.8
18+33.28, 29.404 RT	915.77			126.9	
18+34.43, 29.270 LT	959.27			132.2	
19+92.44, 21.328 RT		70	8	0.9	181.3
19+93.45, 27.283 LT		70	8	1.3	
20+39.36, 33.938 LT		55	8	3.1	
20+40.00, 16.233 RT		135	8		
20+42.41, 29.124 LT	44.67				234.1
20+43.25, 31.355 RT	67.64				
21+93.65, 27.919 RT	816.54			93.7	
21+93.67, 27.416 LT	835.73			94.2	
LIGHT POLES		765.0			
TOTAL	9915.0	1745.0	112.0	1378.0	1420.0

CURB & GUTTER SCHEDULE		
LOCATION	CC&G REMOVAL FT.	B6:24 CC&G FT.
MAIN STREET		
5+70.85', 42.410' RT	46	59.0
5+71.14', 30.774' LT	45	57.0
8+56.83', 32.563' RT	46	50.0
8+58.72', 21.465' LT	47	61.0
9+38.71', 32.960' RT	44	59.0
9+39.05', 35.514' LT	44	55
12+22.68', 24.347' RT	48	61
12+24.43', 21.648' LT	50	59.0
16+70.23', 35.189' RT	42	57.0
16+73.34', 29.395' LT	37	54.0
19+55.77', 25.275' RT	47	59
19+57.10', 23.946' LT	46	58
20+36.77', 36.476' RT	25	39
20+39.90', 28.174' LT	10	10
TOTAL	577.0	738.0

PAVEMENT REMOVAL SCHEDULE	
LOCATION	PAVEMENT REMOVAL SQ. YD.
MAIN STREET	
5+80.26, 10.601 LT	25.7
5+85.35, 9.904 LT	30.9
6+13.18, 31.593 RT	25.3
8+81.39, 31.660 RT	15.4
8+83.97, 20.745 LT	31.9
8+91.92, 13.180 LT	27.6
9+47.81, 10.923 LT	18.3
9+67.59, 17.832 LT	29.7
9+79.14, 23.811 RT	29.5
12+22.56, 20.642 LT	31.3
12+53.47, 23.532 RT	29.6
12+59.83, 14.191 LT	18.7
16+79.87, 15.453 LT	21.3
16+87.29, 14.684 RT	31.0
16+99.64, 20.781 LT	22.6
19+55.49, 22.931 LT	30.3
19+66.69, 21.438 RT	29.6
19+93.24, 16.897 LT	20.1
20+44.76, 24.261 RT	18.6
20+45.49, 22.685 LT	27.6
TOTAL	515.0

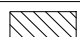

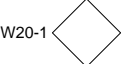
PLANTER SCHEDULE																						
LOCATION	5+85, LT	6+00, RT	7+50, RT	8+85, RT	8+90, LT	9+55, LT	9+85, RT	11+05, LT	11+10, RT	12+25, LT	12+50, RT	16+90, RT	17+05, LT	18+40, LT, RT	19+85, RT	19+90, LT	20+45, RT	20+65, LT	22+05, LT	22+15, RT	23+40, LT, RT	TOTAL
COAL CART PLANTER	1			1		1					1	1				1	1					7
CORNER PLANTER		1			1		1				1				1			1			2	9
LARGE PLANTER			1					1	1					2					1	1		7
SMALL PLANTER			2					2	2					4					2	2		14



FINAL

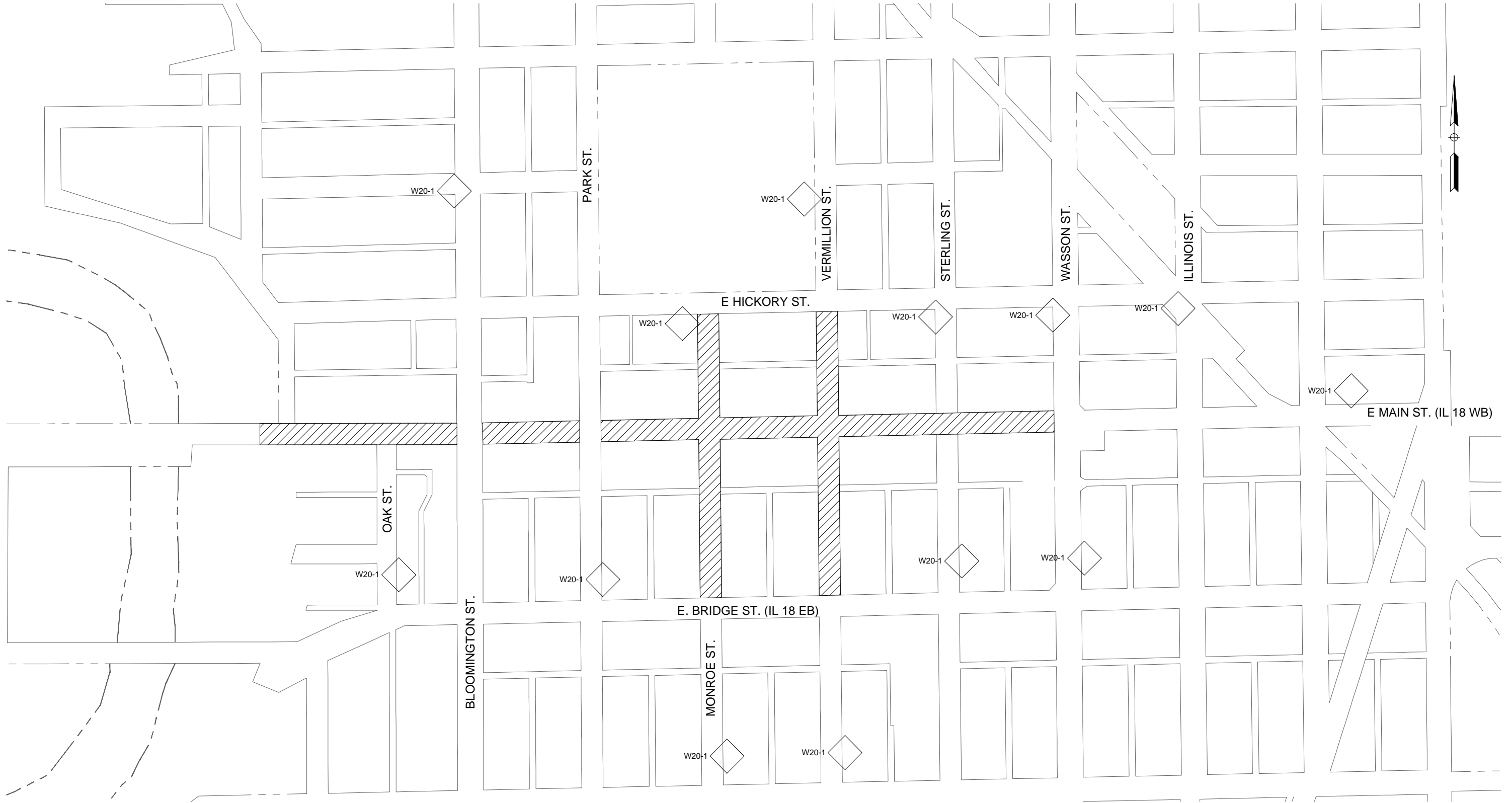
FILE NAME =	USER NAME = JEREMY E. PALM	DESIGNED - JEP	REVISED - 3/28/20 - IDOT COMMENT	STATE OF ILLINOIS DEPARTMENT OF TRANSPORTATION	Schedule of Quantities			F.A.F. RTE. 0653	SECTION 18-00100-00-LT	COUNTY LaSalle	TOTAL SHEETS 16	SHEET NO. 6
\$FILELS		DRAWN - JCL	REVISED - SCOPE REVISION-7-1-20		SCALE: N/A	SHEET NO. 6 OF 16 SHEETS	STA. TO STA.	CONTRACT NO. 87717				
		CHECKED - JEP	REVISED -		ILLINOIS FED. AID PROJECT							
		DATE - 11/15/18	REVISED -									

- NOTES: 1. TRAFFIC CONTROL FOR CURB BUMPOUT AND STREETLIGHT CONSTRUCTION ON MAIN ST (IL RTE 18) TO BE IN ACCORDANCE WITH IDOT STD. 701101-05 OFF-ROAD MULTI-LANE 15'-24" FROM PAVEMENT EDGE. TWO THRU LANES TO REMAIN OPEN.
2. TRAFFIC CONTROL FOR STAMPED BRICK CONCRETE CROSSWALK CONSTRUCTION ON MAIN ST (IL RTE 18) TO BE IN ACCORDANCE WITH IDOT STD. 701601-09 URBAN LANE CLOSURE, MULTILANE, 1W OR 2W WITH NONTRAVERSABLE MEDIAN. ONE THRU LANE TO REMAIN OPEN.

LEGEND

 = WORK AREA
 = DRUM WITH STEADY BURN LIGHT
 = PROPOSED SIGN

 = TYPE III. BARRICADE R11-4 (ROAD CLOSED) WITH FLASHING LIGHTS AND SIGN
 = TYPE III. BARRICADES, R11-3a (ROAD CLOSED-LOCAL TRAFFIC ONLY) WITH FLASHING LIGHTS STAGGERED TO ALLOW PASSAGE



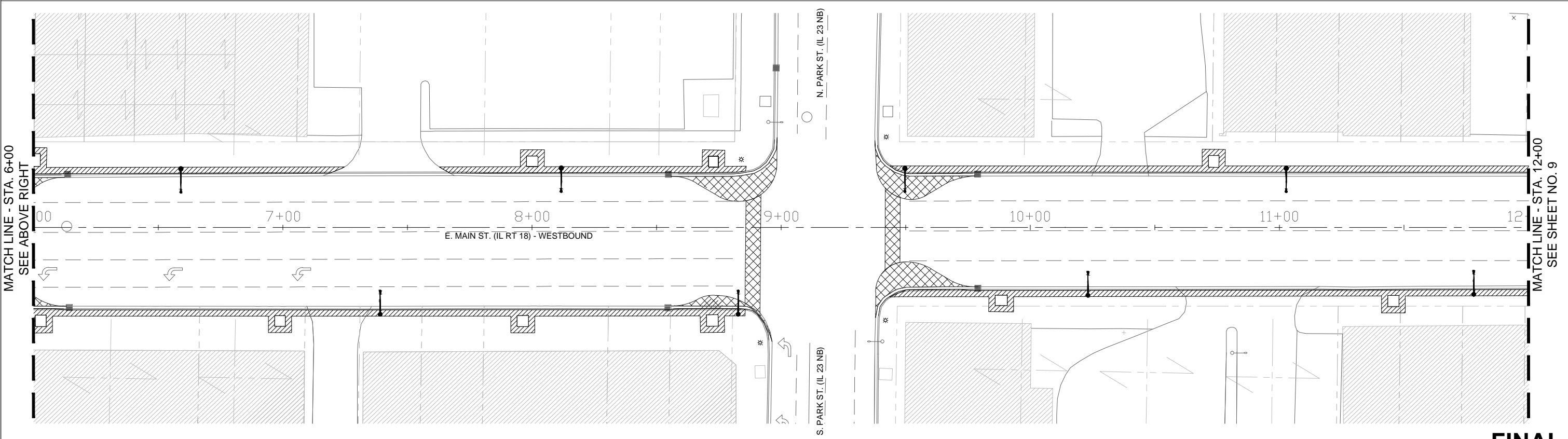
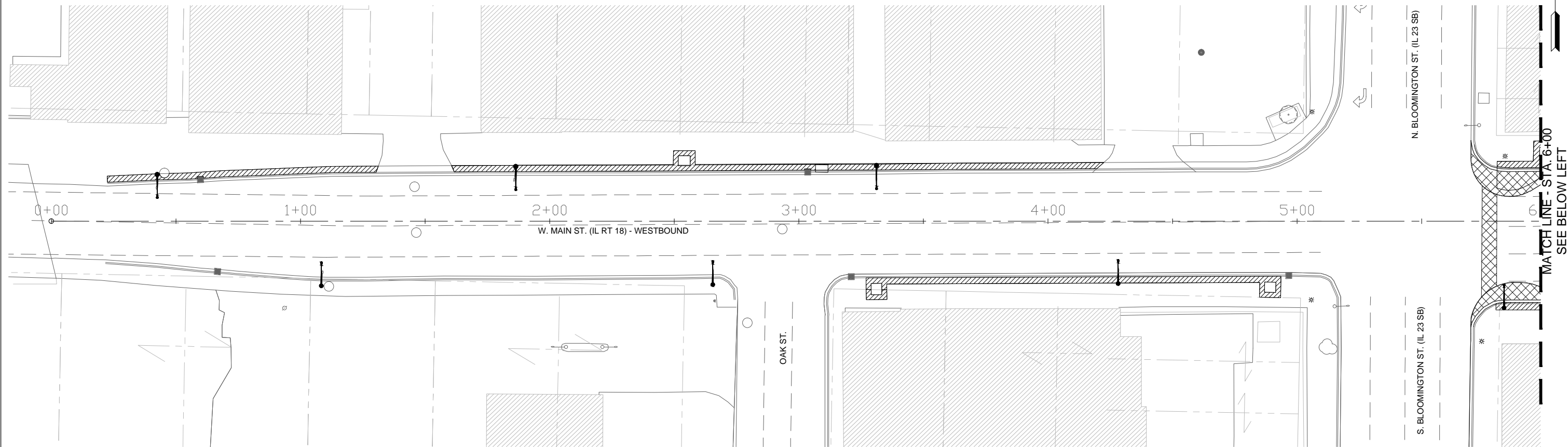
FINAL

FILE NAME =	USER NAME = JEREMY E. PALM	DESIGNED - JEP	REVISED - _____	STATE OF ILLINOIS DEPARTMENT OF TRANSPORTATION	Traffic Control Plan			F.A. FAP RTE. 0653	SECTION 18-00100-00-LT	COUNTY LaSalle	TOTAL SHEETS 16	SHEET NO. 7
\$FILEL\$		DRAWN - JCL	REVISED - _____		SCALE: N/A	SHEET NO. 7 OF 16 SHEETS	STA. TO STA.	CONTRACT NO. 87717				
		CHECKED - JEP	REVISED - _____		ILLINOIS FED. AID PROJECT							
		DATE - 11/15/18	REVISED - _____									

- NOTES: 1. TRAFFIC CONTROL FOR CURB BUMPOUT AND STREETLIGHT CONSTRUCTION ON MAIN ST (IL RTE 18) TO BE IN ACCORDANCE WITH IDOT STD. 701101-05 OFF-ROAD MULTI-LANE 15'-24" FROM PAVEMENT EDGE. TWO THRU LANES TO REMAIN OPEN.
2. TRAFFIC CONTROL FOR STAMPED BRICK CONCRETE CROSSWALK CONSTRUCTION ON MAIN ST (IL RTE 18) TO BE IN ACCORDANCE WITH IDOT STD. 701601-09 URBAN LANE CLOSURE, MULTILANE, 1W OR 2W WITH NONTRAVERSABLE MEDIAN. ONE THRU LANE TO REMAIN OPEN.
3. EXISTING PAVEMENT TO BE SAWCUT PRIOR TO PAVEMENT REMOVAL

LEGEND

-  = PAVEMENT REMOVAL
-  = SIDEWALK REMOVAL
-  = CURB REMOVAL
-  = EXIST. LIGHT POLE SALVAGE AND FOUNDATION REMOVAL



FINAL

FILE NAME =	USER NAME = JEREMY E. PALM	DESIGNED - JEP	REVISED - 7/22/19 - IDOT COMMENT
\$FILES\$		DRAWN - JCL	REVISED - 3-26-20 - IDOT COMMENT
	PLOT SCALE = 0.5	CHECKED - JEP	REVISED -
	PLOT DATE = 7/13/2020	DATE - 11/15/18	REVISED -

STATE OF ILLINOIS
DEPARTMENT OF TRANSPORTATION



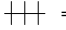

Removal Plan (E. Main St. - 0+22.50 - 12+00)

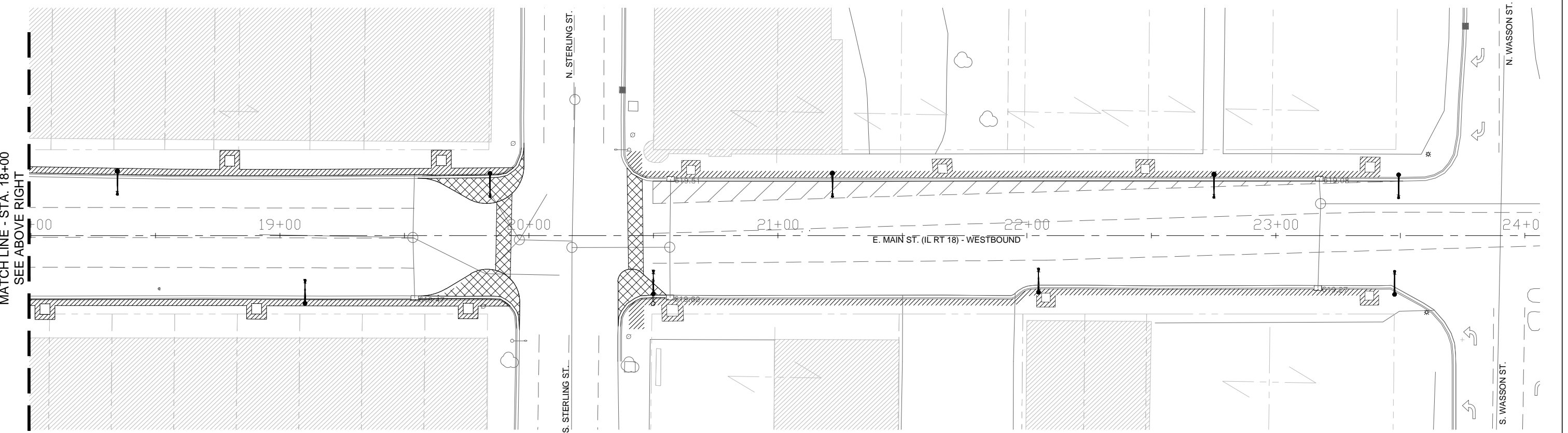
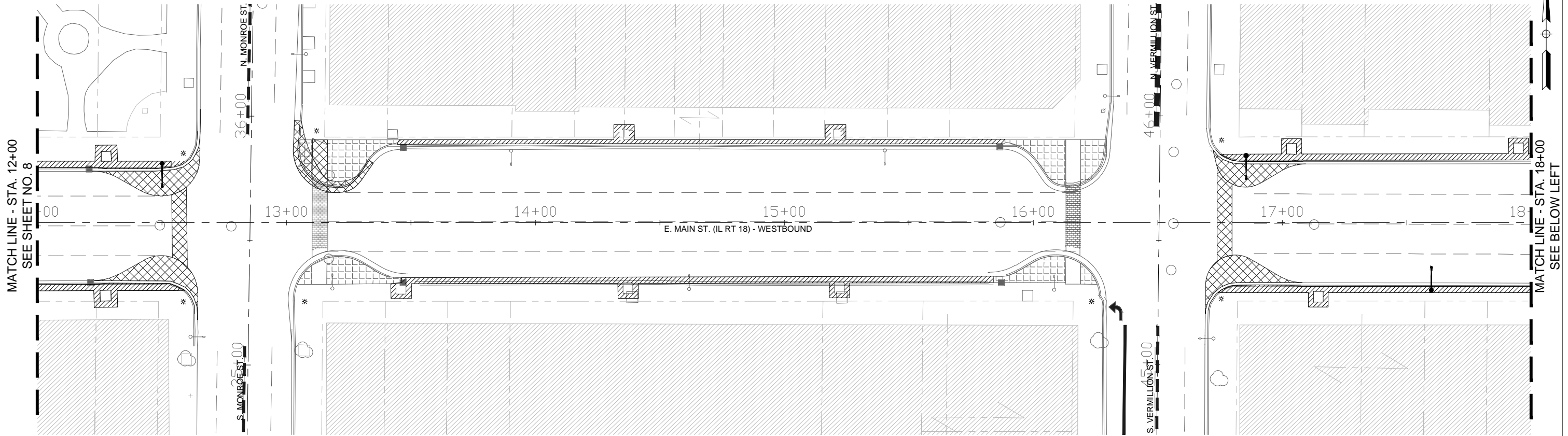
SCALE: 1" = 20' SHEET NO. 8 OF 16 SHEETS STA. 0+22.50 TO STA. 12+00

F.A. FAP RTE.	SECTION	COUNTY	TOTAL SHEETS	SHEET NO.
0653	18-00100-00-LT	LaSalle	16	8
				CONTRACT NO. 87717
ILLINOIS FED. AID PROJECT				

- NOTES: 1. TRAFFIC CONTROL FOR CURB BUMPOUT CONSTRUCTION ON MAIN ST (IL RTE 18) TO BE IN ACCORDANCE WITH IDOT STD. 701101-05 OFF-ROAD MULTI-LANE 15'-24" FROM PAVEMENT EDGE. TWO THRU LANES TO REMAIN OPEN.
 2. TRAFFIC CONTROL FOR STAMPED BRICK CONCRETE CROSSWALK CONSTRUCTION ON MAIN ST (IL RTE 18) TO BE IN ACCORDANCE WITH IDOT STD. 701601-09 URBAN LANE CLOSURE, MULTILANE, 1W OR 2W WITH NONTRAVERSABLE MEDIAN. ONE THRU LANE TO REMAIN OPEN.
 3. EXISTING PAVEMENT TO BE SAWCUT PRIOR TO PAVEMENT REMOVAL

LEGEND

-  = PAVEMENT REMOVAL
-  = SIDEWALK REMOVAL
-  = CURB REMOVAL
-  = EXIST. LIGHT POLE SALVAGE AND FOUNDATION REMOVAL



FINAL

FILE NAME =	USER NAME = JEREMY E. PALM	DESIGNED - JEP	REVISED - 7/22/19 - IDOT COMMENT
\$FILES\$		DRAWN - JCL	REVISED - 3-26-20 - IDOT COMMENT
	PLOT SCALE = 0.5	CHECKED - JEP	REVISED -
	PLOT DATE = 7/13/2020	DATE - 11/15/18	REVISED -

STATE OF ILLINOIS
DEPARTMENT OF TRANSPORTATION

Removal Plan (E. Main St. - 12+00 - 24+00)

SCALE: 1" = 20' SHEET NO. 9 OF 16 SHEETS STA. 12+00 TO STA. 24+00

F.A. FAP RTE.	SECTION	COUNTY	TOTAL SHEETS	SHEET NO.
0653	18-00100-00-LT	LaSalle	16	9
CONTRACT NO.			87717	
ILLINOIS FED. AID PROJECT				

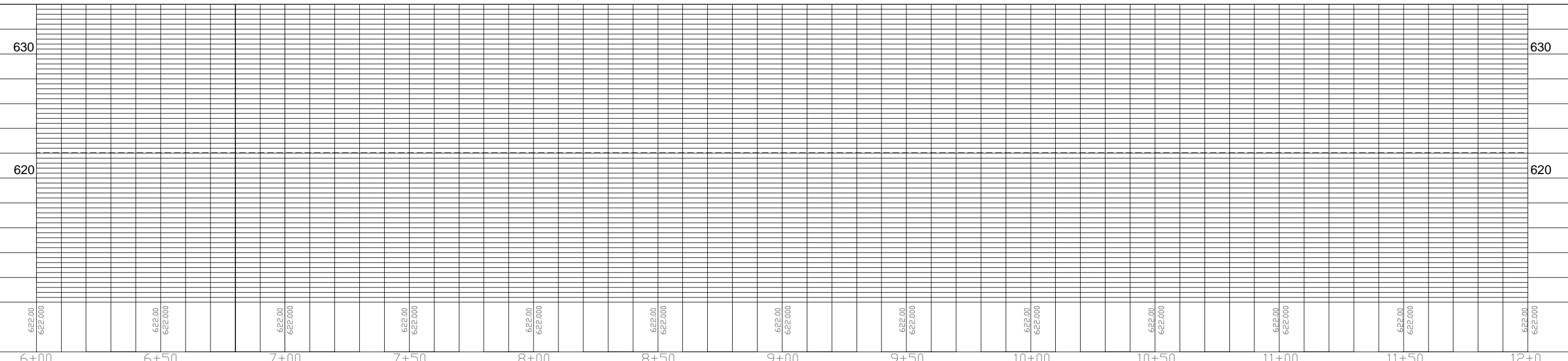
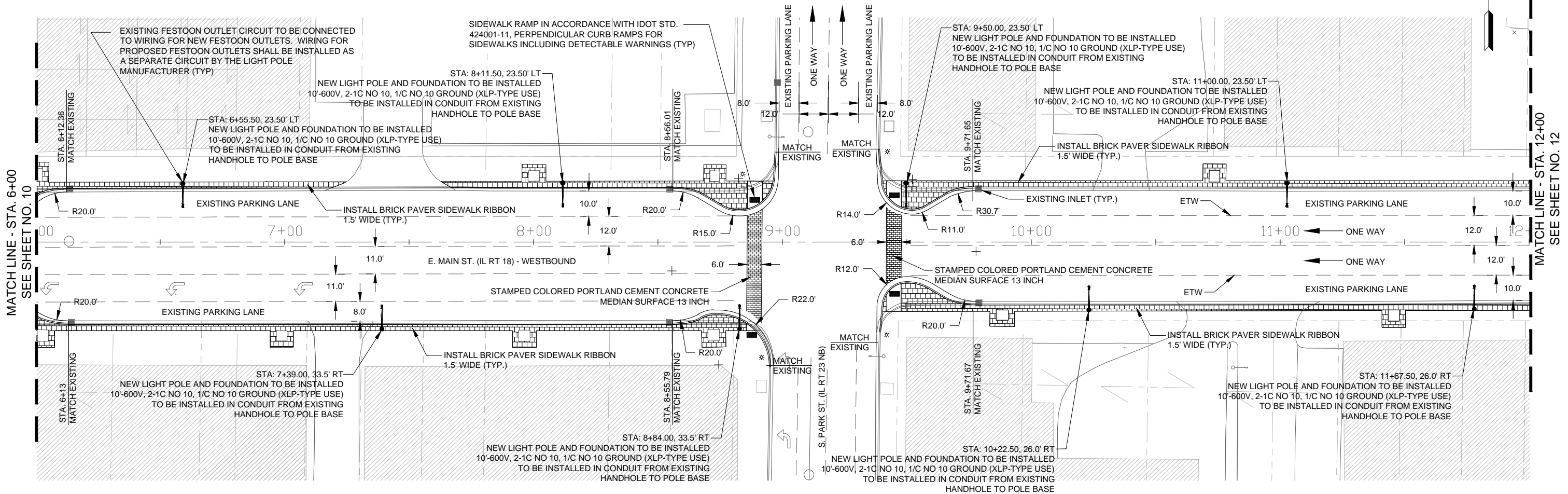
- NOTES: 1. TRAFFIC CONTROL FOR CURB BUMP-OUT CONSTRUCTION ON MAIN ST (IL RTE 18) TO BE IN ACCORDANCE WITH IDOT STD. 701101-05 OFF-ROAD MULTI-LANE 15'-24" FROM PAVEMENT EDGE. TWO THRU LANES TO REMAIN OPEN.
2. TRAFFIC CONTROL FOR STAMPED BRICK CONCRETE CROSSWALK CONSTRUCTION ON MAIN ST (IL RTE 18) TO BE IN ACCORDANCE WITH IDOT STD. 701601-09 URBAN LANE CLOSURE, MULTILANE, 1W OR 2W WITH NONTRAVERSABLE MEDIAN. ONE THRU LANE TO REMAIN OPEN.
3. ALL CONDUIT TO BE BURIED AT A MINIMUM DEPTH OF 2.5 FT OR 2 FT BELOW FINISHED GRADE PER SEC. 810 OF THE STANDARD SPECIFICATIONS.
4. ALL WIRE RUNS SHALL INCLUDE 36" OF SLACK IN ALL HANDHOLES AND INSIDE LIGHT POLES.
5. ALL WORK TO BE PERFORMED IN ACCORDANCE WITH THE 2014 NATIONAL ELECTRIC CODE.

LEGEND

- [Brick Paver Symbol] = BRICK PAVER SIDEWALK (SEE DETAIL ON SHEET 3)
- [Light Pole Symbol] = NEW LIGHT POLE AND FOUNDATION TO BE INSTALLED

PLAN	DATE
BY	
REVIEWED	
ALIGNMENT CHECKED	
GRADES CHECKED	
STRUCTURE NOTATIONS CHKG	
NOTE BOOK NO.	

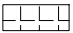

PROFILE	DATE
BY	
REVIEWED	
GRADES CHECKED	
E.I.M. NOTED	
STRUCTURE NOTATIONS CHKG	
NOTE BOOK NO.	



FILE NAME =	USER NAME = JEREMY E. PALM	DESIGNED - JEP	REVISED - 7/22/19 - IDOT COMMENT	STATE OF ILLINOIS DEPARTMENT OF TRANSPORTATION	Plan and Profile (E. Main St. - 6+00 - 12+00)			F.A. FAP RTE. 0653	SECTION 18-00100-00-LT	COUNTY LaSalle	TOTAL SHEETS 16	SHEET NO. 11
SCALE: 1" = 20'	SHEET NO. 11 OF 16 SHEETS	STA. 5+75 TO STA. 12+00	CONTRACT NO. 87717		ILLINOIS FED. AID PROJECT							
PLOT SCALE = 0.5	CHECKED - JEP	REVISOR -	DATE - 11/15/18		REVISOR -							
PLOT DATE = 7/13/2020	DATE - 11/15/18	REVISOR -										

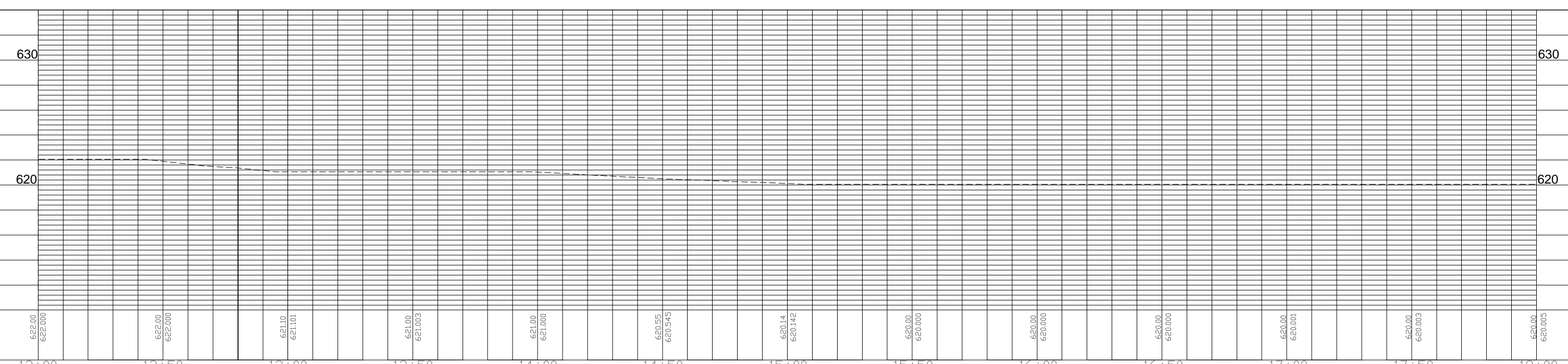
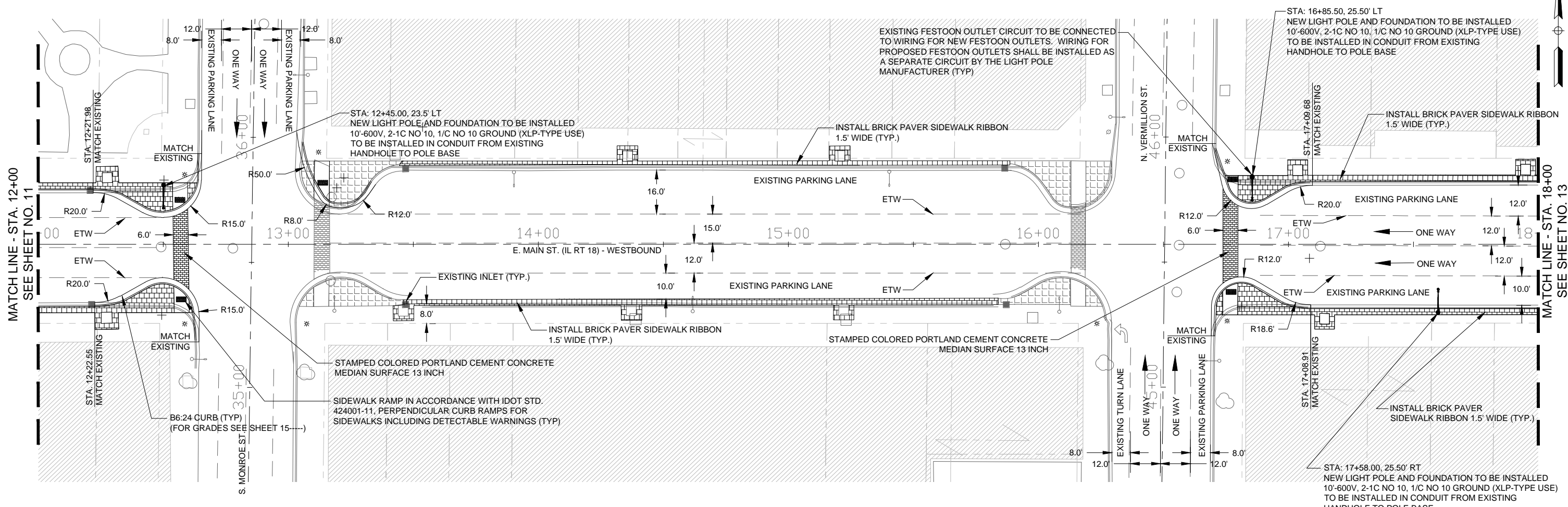
- NOTES: 1. TRAFFIC CONTROL FOR CURB BUMP-OUT CONSTRUCTION ON MAIN ST (IL RTE 18) TO BE IN ACCORDANCE WITH IDOT STD. 701101-05 OFF-ROAD MULTI-LANE 15'-24" FROM PAVEMENT EDGE. TWO THRU LANES TO REMAIN OPEN.
2. TRAFFIC CONTROL FOR STAMPED BRICK CONCRETE CROSSWALK CONSTRUCTION ON MAIN ST (IL RTE 18) TO BE IN ACCORDANCE WITH IDOT STD. 701601-09 URBAN LANE CLOSURE, MULTILANE, 1W OR 2W WITH NONTRAVERSABLE MEDIAN. ONE THRU LANE TO REMAIN OPEN.
3. ALL CONDUIT TO BE BURIED AT A MINIMUM DEPTH OF 2.5 FT OR 2 FT BELOW FINISHED GRADE PER SEC. 810 OF THE STANDARD SPECIFICATIONS.
4. ALL WIRE RUNS SHALL INCLUDE 36" OF SLACK IN ALL HANDHOLES AND INSIDE LIGHT POLES.
5. ALL WORK TO BE PERFORMED IN ACCORDANCE WITH THE 2014 NATIONAL ELECTRIC CODE.

LEGEND

-  = BRICK PAVER SIDEWALK (SEE DETAIL ON SHEET 3)
-  = NEW LIGHT POLE AND FOUNDATION TO BE INSTALLED

PLAN	REVIEWED	DATE
	APPROVED	
	ALIGNMENT CHECKED	
	GRADES CHECKED	
	NOTE BOOK NO.	
	FILE NAME	

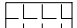

PROFILE	REVIEWED	DATE
	APPROVED	
	GRADES CHECKED	
	E.I.M. NOTED	
	STRUCTURE NOTATIONS CHNG	
	NOTE BOOK NO.	
	FILE NAME	



FILE NAME =	USER NAME = JEREMY E. PALM	DESIGNED - JEP	REVISED - 7/22/19 - IDOT COMMENT	STATE OF ILLINOIS DEPARTMENT OF TRANSPORTATION	Plan and Profile (E. Main St. - 12+00 - 18+00)	F.A. FAP RTE. 0653	SECTION 18-00100-00-LT	COUNTY LaSalle	TOTAL SHEETS 16	SHEET NO. 12
SCALE: 1" = 20'	SHEET NO. 12 OF 16 SHEETS	STA. 12+00 TO STA. 18+00	CONTRACT NO. 87717			ILLINOIS FED. AID PROJECT				
PLOT SCALE = 0.5	CHECKED - JEP	REVISED -								
PLOT DATE = 7/13/2020	DATE - 11/15/18	REVISED -								

- NOTES: 1. TRAFFIC CONTROL FOR CURB BUMP-OUT CONSTRUCTION ON MAIN ST (IL RTE 18) TO BE IN ACCORDANCE WITH IDOT STD. 701101-05 OFF-ROAD MULTI-LANE 15'-24" FROM PAVEMENT EDGE. TWO THRU LANES TO REMAIN OPEN.
 2. TRAFFIC CONTROL FOR STAMPED BRICK CONCRETE CROSSWALK CONSTRUCTION ON MAIN ST (IL RTE 18) TO BE IN ACCORDANCE WITH IDOT STD. 701601-09 URBAN LANE CLOSURE, MULTILANE, 1W OR 2W WITH NONTRAVERSABLE MEDIAN. ONE THRU LANE TO REMAIN OPEN.
 3. ALL CONDUIT TO BE BURIED AT A MINIMUM DEPTH OF 2.5 FT OR 2 FT BELOW FINISHED GRADE PER SEC. 810 OF THE STANDARD SPECIFICATIONS.
 4. ALL WIRE RUNS SHALL INCLUDE 36" OF SLACK IN ALL HANDHOLES AND INSIDE LIGHT POLES.
 5. ALL WORK TO BE PERFORMED IN ACCORDANCE WITH THE 2014 NATIONAL ELECTRIC CODE.

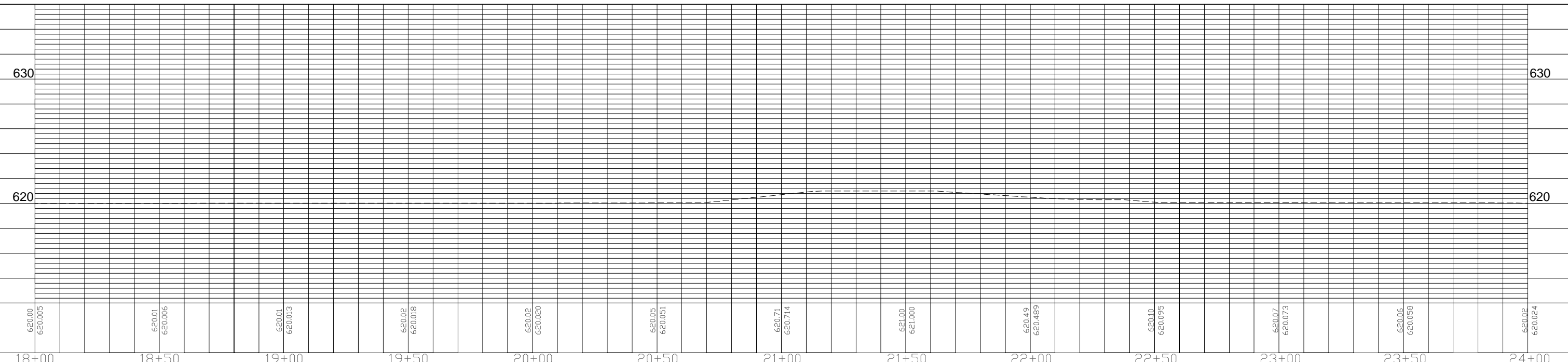
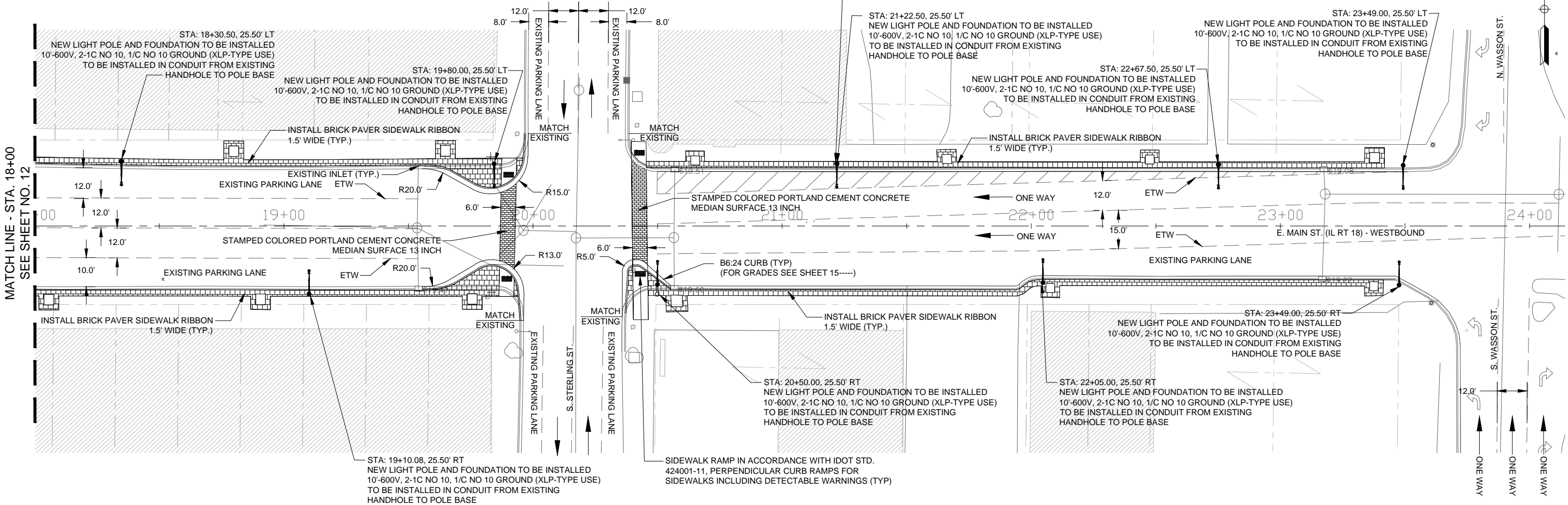
LEGEND

-  = BRICK PAVER SIDEWALK (SEE DETAIL ON SHEET 3)
-  = NEW LIGHT POLE AND FOUNDATION TO BE INSTALLED

DATE	
BY	
PLAN	
NO.	
NO.	
NO.	

DATE	
BY	
PROFILE	
NO.	
NO.	
NO.	





EXISTING FESTOON OUTLET CIRCUIT TO BE CONNECTED TO WIRING FOR NEW FESTOON OUTLETS. WIRING FOR PROPOSED FESTOON OUTLETS SHALL BE INSTALLED AS A SEPARATE CIRCUIT BY THE LIGHT POLE MANUFACTURER (TYP)



FILE NAME =	USER NAME = JEREMY E. PALM	DESIGNED - JEP	REVISED - 3-26-20 - IDOT COMMENT	STATE OF ILLINOIS DEPARTMENT OF TRANSPORTATION	Plan and Profile (E. Main St. - 18+00 - 24+00)	F.A. FAP RTE. 0653	SECTION 18-00100-00-LT	COUNTY LaSalle	TOTAL SHEETS 16	SHEET NO. 13
SCALE: 1" = 20'	SHEET NO. 13 OF 16 SHEETS	STA. 18+00 TO STA. 24+00	CONTRACT NO. 87717							
ILLINOIS FED. AID PROJECT										

- NOTES: 1. EXISTING CONDUITS ARE LOCATED 6" BEHIND THE EXISTING BACK OF CURB ON ALL STREETS
2. EXISTING LIGHTING CONTROLLERS ARE LOCATED ON THE UTILITY SERVICE POLES MOUNTED 15' ABOVE THE GROUND WITHIN ALLEY RIGHT-OF-WAYS AT THE LOCATIONS SHOWN

LEGEND

-  = NEW LIGHT POLE AND FOUNDATION TO BE INSTALLED
-  = EXISTING LIGHT POLE TO REMAIN
-  = EXISTING 2" CONDUIT WITH 3-1/C NO 8 AND GROUND
-  = EXISTING CONTROLLER AND SERVICE LOCATION



FINAL

FILE NAME =	USER NAME = JEREMY E. PALM	DESIGNED - JEP	REVISED - 3-26-20 - IDOT COMMENT
\$FILES\$		DRAWN - JCL	REVISED -
	PLOT SCALE = 0.5	CHECKED - JEP	REVISED -
	PLOT DATE = 7/13/2020	DATE - 11/15/18	REVISED -

STATE OF ILLINOIS
DEPARTMENT OF TRANSPORTATION

Lighting Electrical Circuit Layout

SCALE: 1"=80' SHEET NO. 14 OF 16 SHEETS STA. TO STA.

F.A. FAP RTE.	SECTION	COUNTY	TOTAL SHEETS	SHEET NO.
0653	18-00100-00-LT	LaSalle	16	14
ILLINOIS FED. AID PROJECT			CONTRACT NO. 87717	

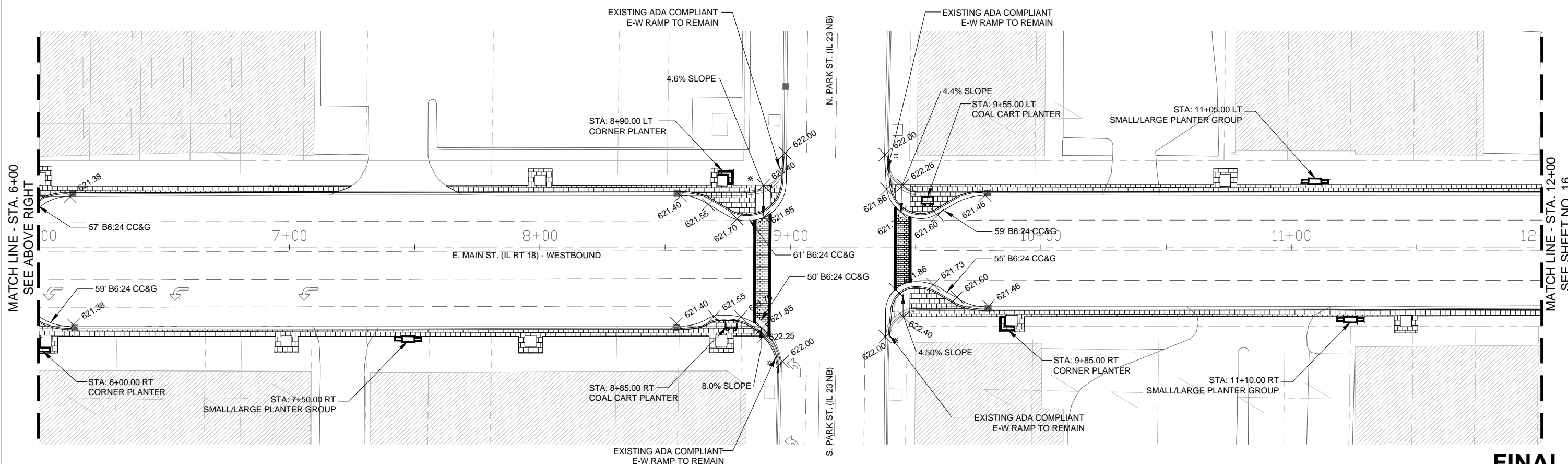
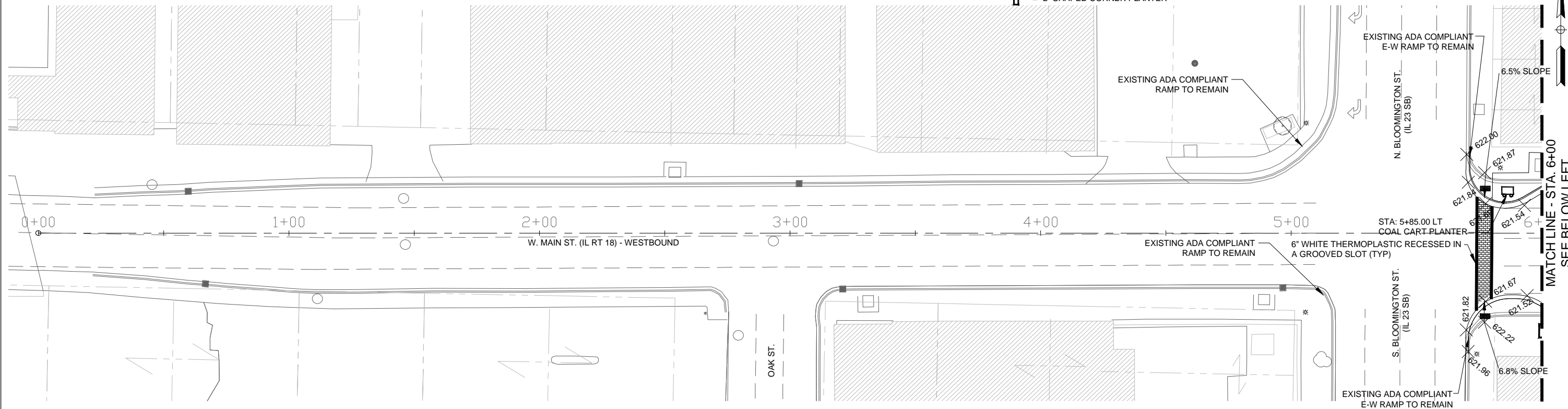
NOTE: ALL PAVEMENT MARKINGS SHALL BE THERMOPLASTIC AND SHALL BE APPLIED ACCORDING TO THE "MANUAL FOR UNIFORM TRAFFIC CONTROL DEVICES" AND ILLINOIS DEPARTMENT OF TRANSPORTATION STANDARDS AND SPECIFICATIONS

NOTE: ALL EXISTING SIGNS AND BANNERS ON LIGHT POLES SHALL BE REMOVED BY THE CITY OF STREATOR PUBLIC WORKS PRIOR TO THE START OF CONSTRUCTION AND REPLACED FOLLOWING INSTALLATION OF THE NEW POLES.

LEGEND

[Symbol] = COAL CART PLANTER
 [Symbol] = "L" SHAPED CORNER PLANTER

[Symbol] 619.73 = EDGE OF PAVEMENT GRADE



FINAL

FILE NAME =	USER NAME = JEREMY E. PALM	DESIGNED - JEP	REVISED - 7/22/19 - IDOT COMMENT
\$FILES\$		DRAWN - JCL	REVISED - 3/26/20 - IDOT COMMENT
	PLOT SCALE = 0.5	CHECKED - JEP	REVISED -
	PLOT DATE = 7/13/2020	DATE - 11/15/18	REVISED -

STATE OF ILLINOIS
 DEPARTMENT OF TRANSPORTATION

Landscaping/Pavement Marking Plan
 (E. Main St. - 0+22.50 - 12+00)
 SCALE: 1" = 20' SHEET NO. 15 OF 16 SHEETS STA. 0+22.50 TO STA. 12+00

F.A. FAP RTE. 0653	SECTION 18-00100-00-LT	COUNTY LaSalle	TOTAL SHEETS 16	SHEET NO. 15
CONTRACT NO. 87717			ILLINOIS FED. AID PROJECT	

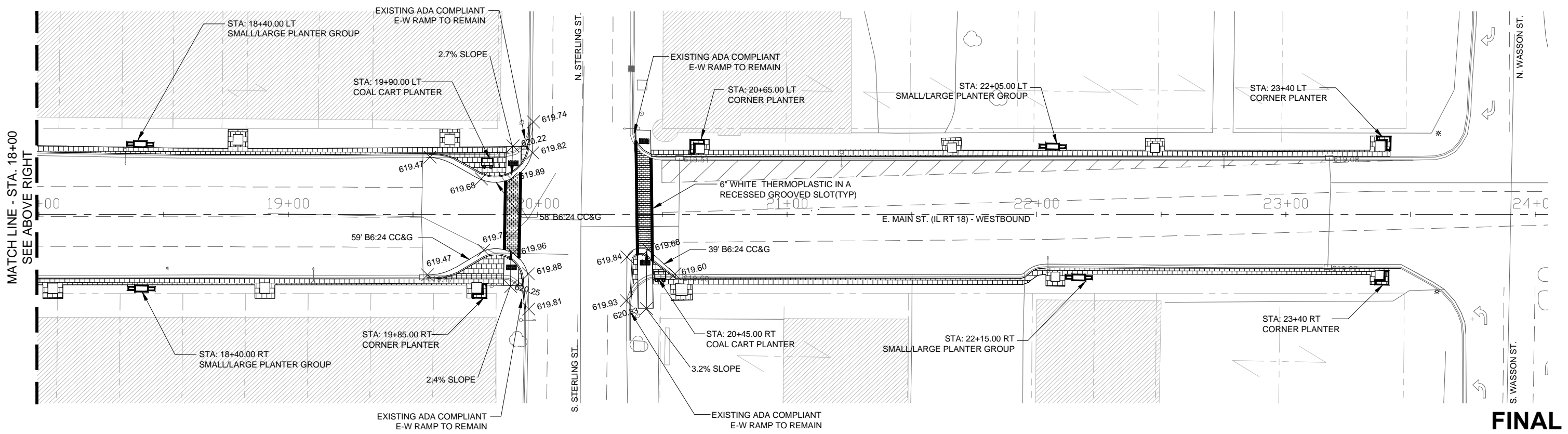
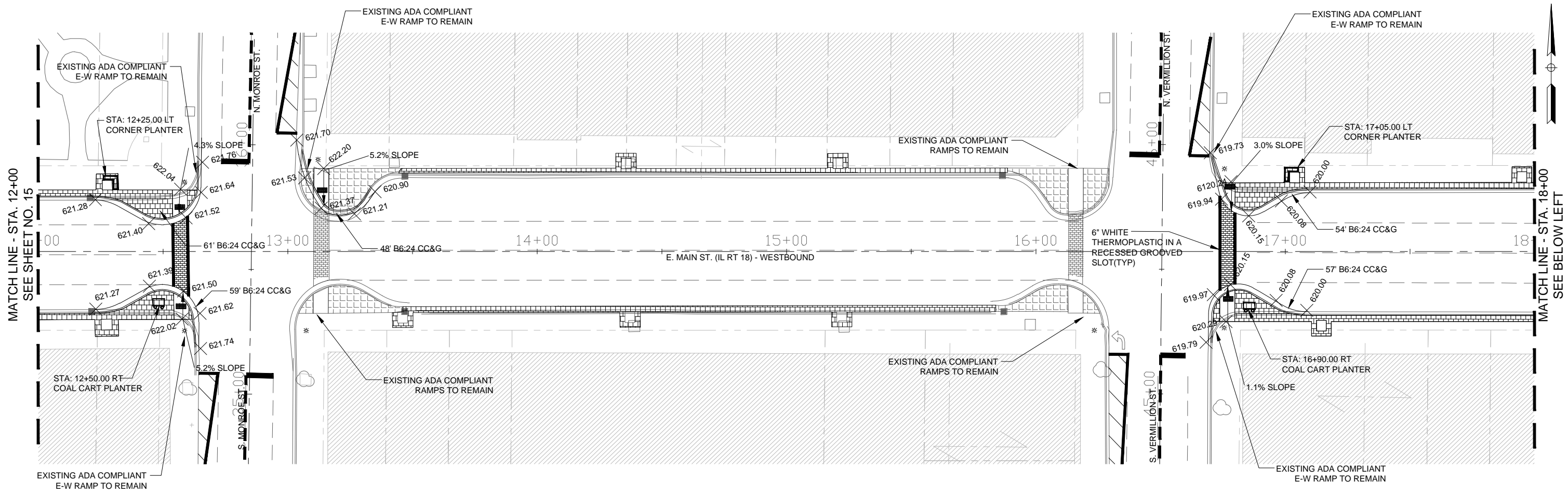
NOTE: ALL PAVEMENT MARKINGS SHALL BE THERMOPLASTIC AND SHALL BE APPLIED ACCORDING TO THE "MANUAL FOR UNIFORM TRAFFIC CONTROL DEVICES" AND ILLINOIS DEPARTMENT OF TRANSPORTATION STANDARDS AND SPECIFICATIONS

NOTE: ALL EXISTING SIGNS AND BANNERS ON LIGHT POLES SHALL BE REMOVED BY THE CITY OF STREATOR PUBLIC WORKS PRIOR TO THE START OF CONSTRUCTION AND REPLACED FOLLOWING INSTALLATION OF THE NEW POLES.

LEGEND

☐ = COAL CART PLANTER
 L = "L" SHAPED CORNER PLANTER

✕ 619.73 = EDGE OF PAVEMENT GRADE



FINAL

STATE OF ILLINOIS
 DEPARTMENT OF TRANSPORTATION

Landscaping/Pavement Marking Plan
 (E. Main St. - 12+00 - 24+00)

FILE NAME =	USER NAME = JEREMY E. PALM	DESIGNED - JEP	REVISED - 7/22/19 - IDOT COMMENT
\$FILES\$		DRAWN - JCL	REVISED - 3/26/20 - IDOT COMMENT
	PLOT SCALE = 0.5	CHECKED - JEP	REVISED -
	PLOT DATE = 7/13/2020	DATE - 11/15/18	REVISED -

SCALE: 1" = 20'	SHEET NO. 16 OF 16 SHEETS	STA. 12+00 TO STA. 24+00	F.A. FAP RTE. 0653	SECTION 18-00100-00-LT	COUNTY LaSalle	TOTAL SHEETS 16	SHEET NO. 16
						CONTRACT NO. 87717	
						ILLINOIS FED. AID PROJECT	