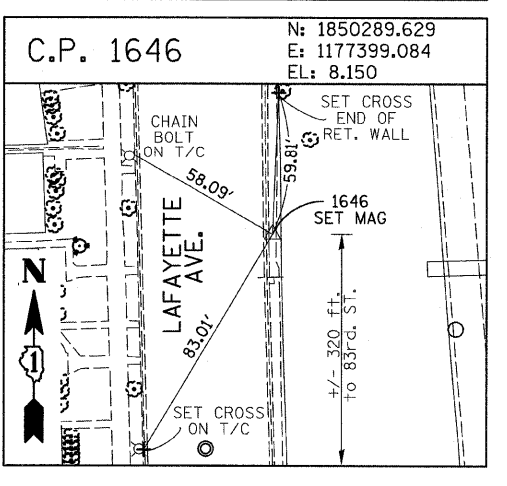
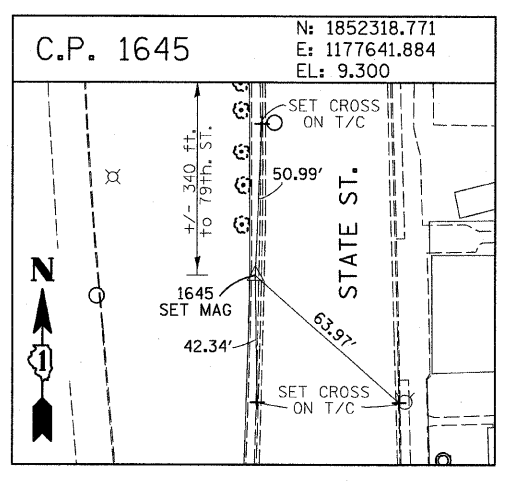
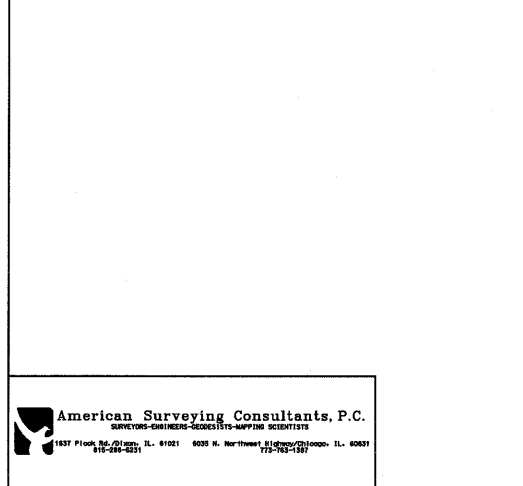
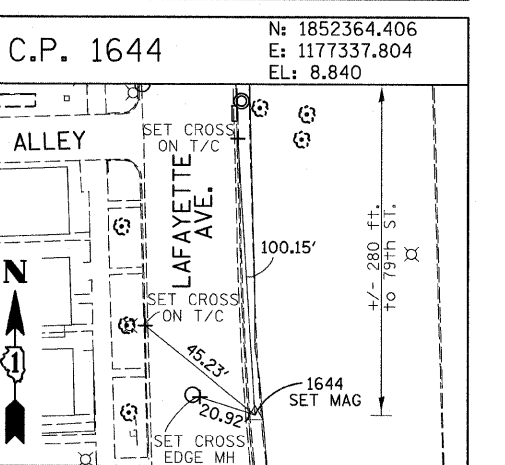
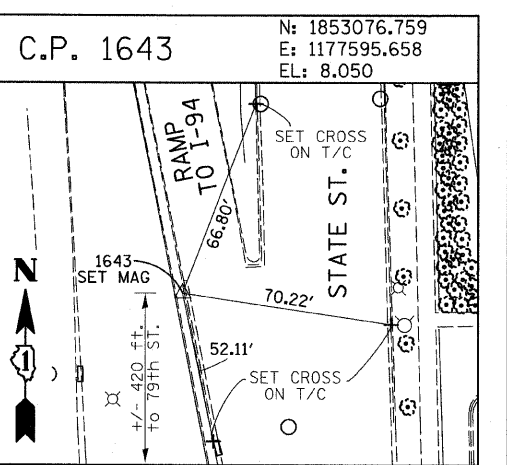
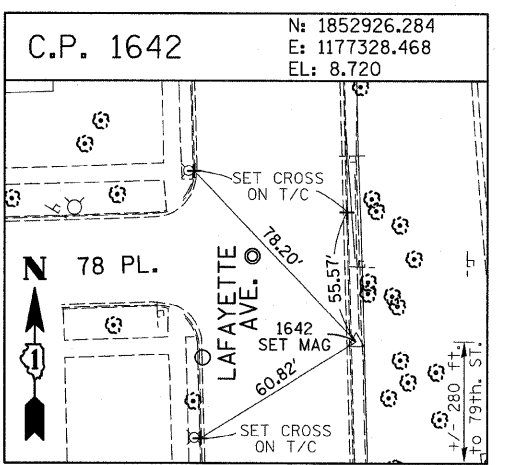
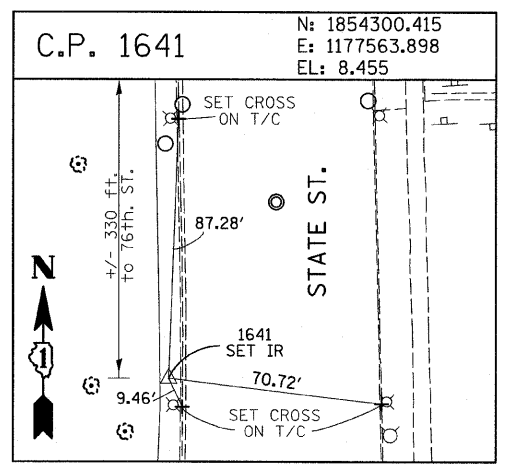
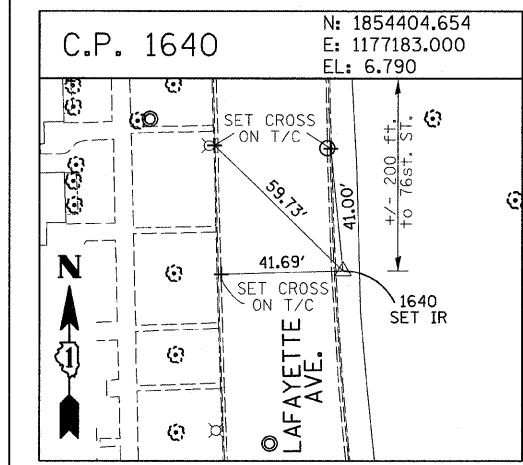
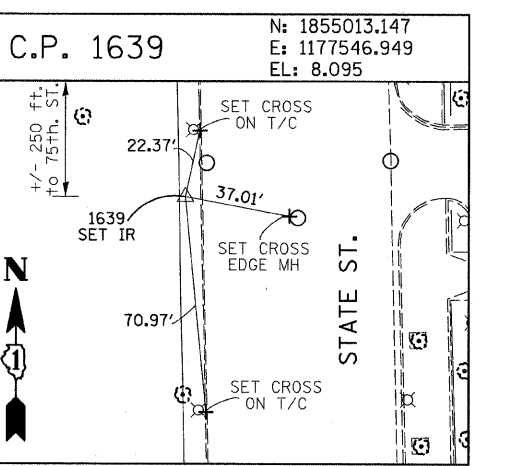
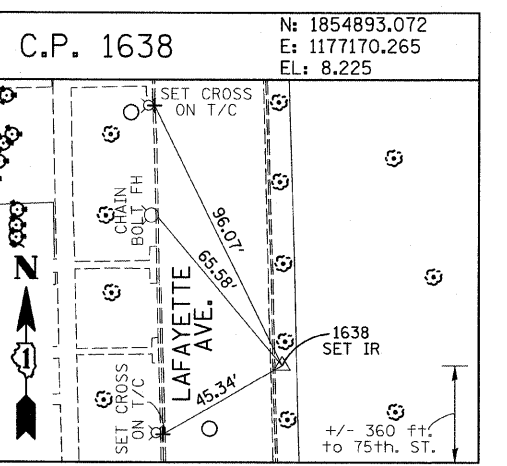
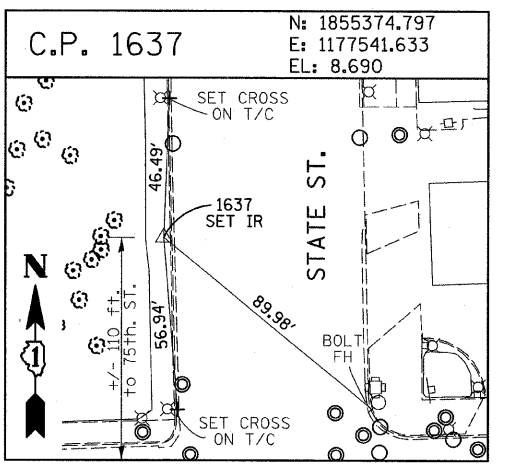
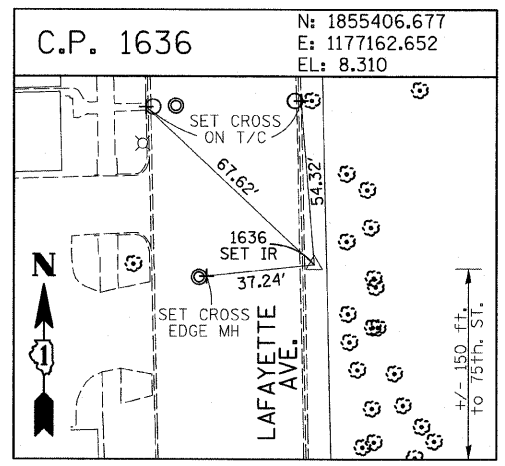
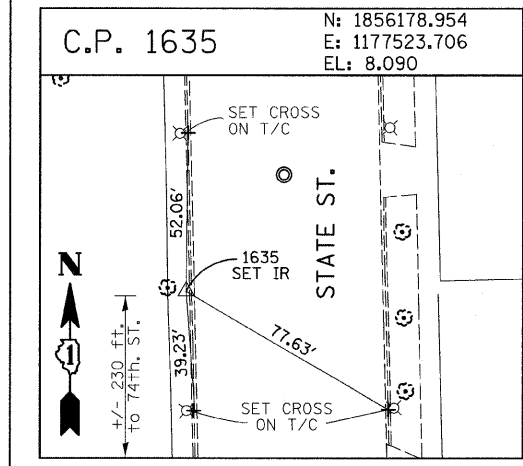
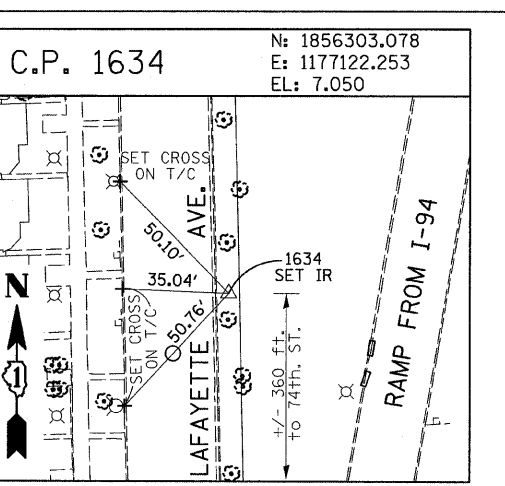
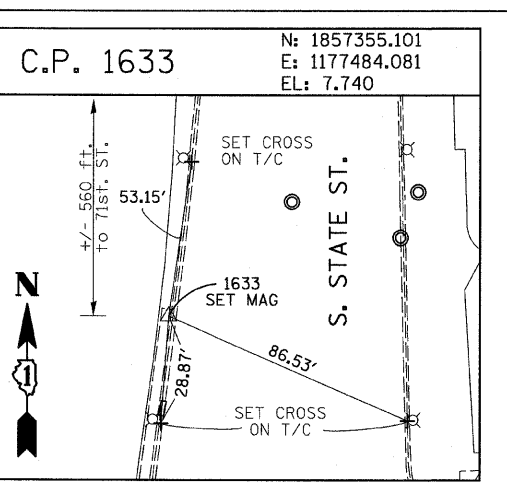
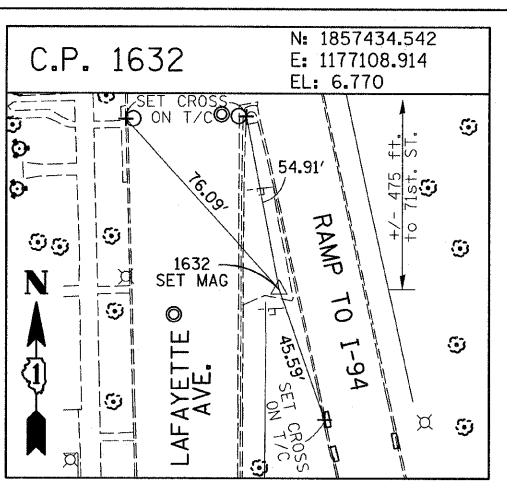
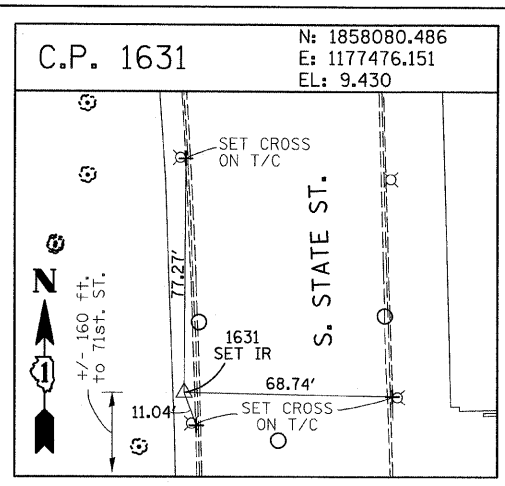
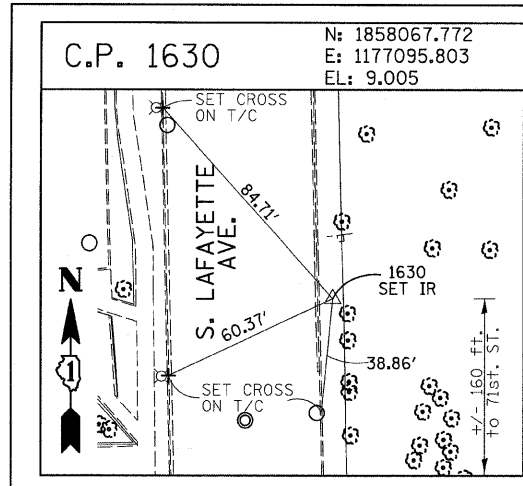


F.A.I. RTE.	SECTION	COUNTY	TOTAL SHEETS	SHEET NO.
94	2005-068 LS	COOK	58	14
STA. 257+76 (NB I-57) TO STA. 221+00 (NB I-94)				
FED. ROAD DIST. NO. ILLINOIS FED. AID PROJECT				

60A74



American Surveying Consultants, P.C.
 1837 Floor, 20/21st, IL 61021 603 N. Northwest Highway/Chicago, IL 60631
 815-299-4231

REVISIONS	
NAME	DATE

ILLINOIS DEPARTMENT OF TRANSPORTATION
 F.A.I. 94 (DAN RYAN EXPRESSWAY)
 SURVEY TIES FOR CONTROL POINTS
 SHEET 3 OF 7

SCALE: 1"=30'
 DATE: JUNE 20, 2008

DRAWN BY: GSP
 CHECKED BY: MMW

6/20/2008 10:25:27 AM