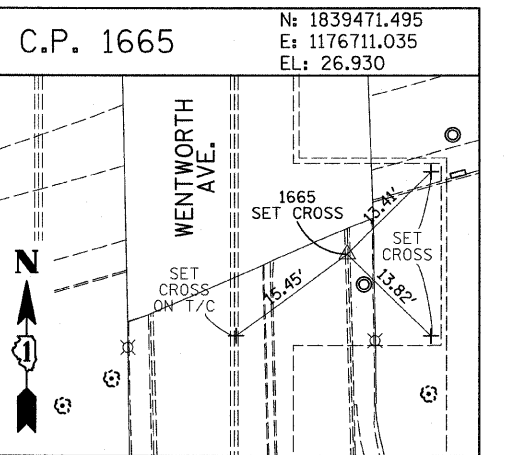
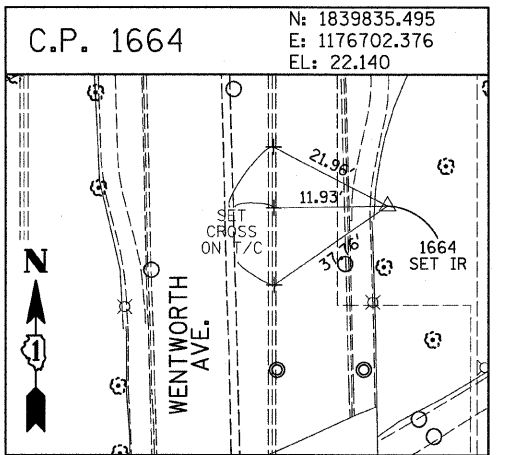
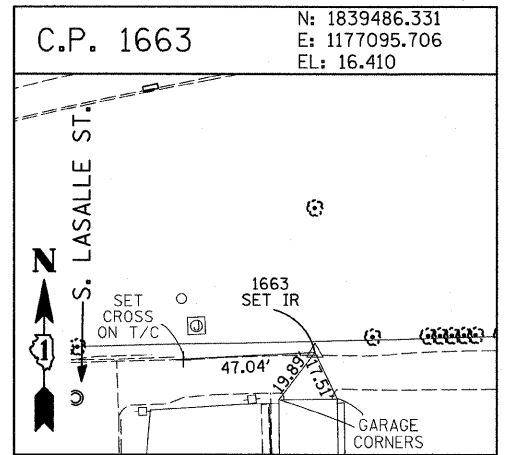
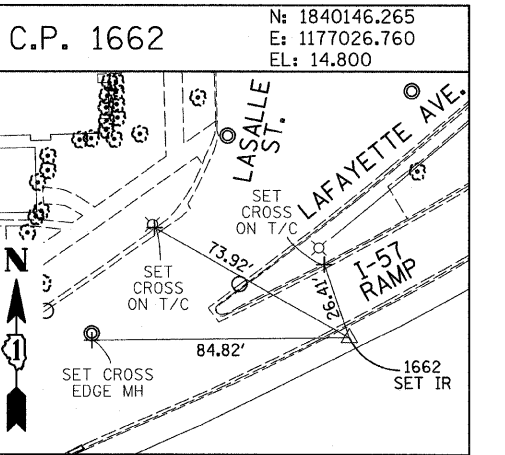
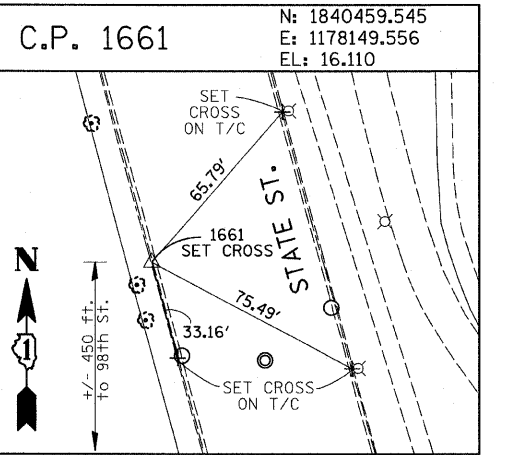
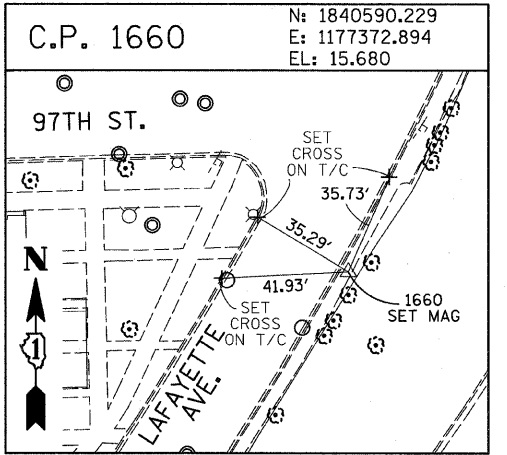
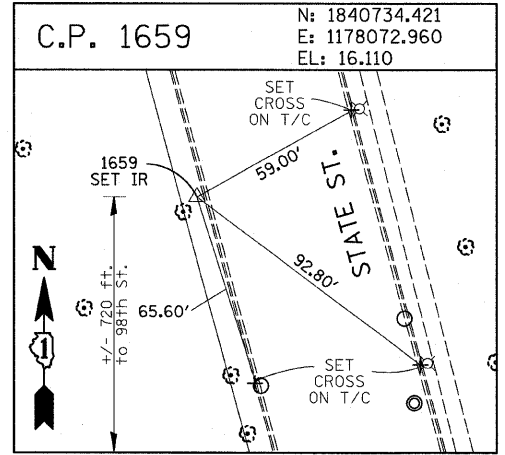
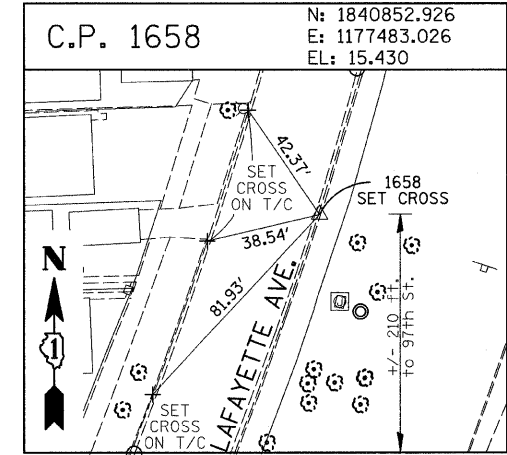
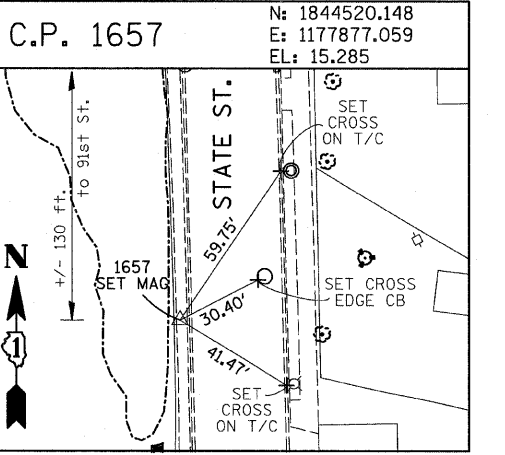
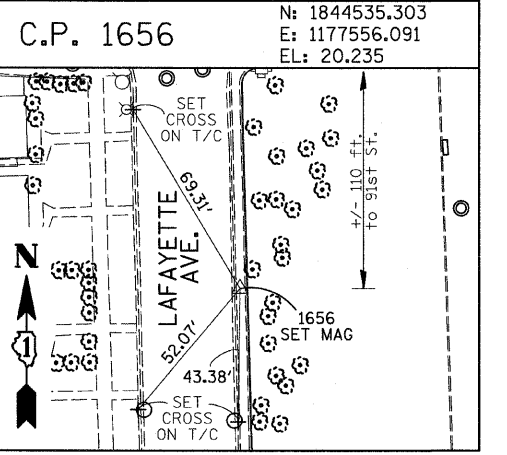
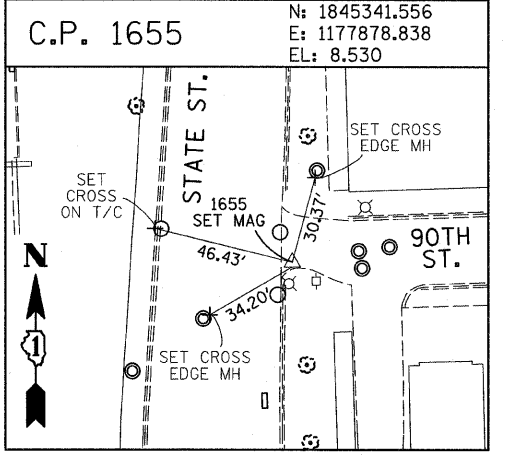
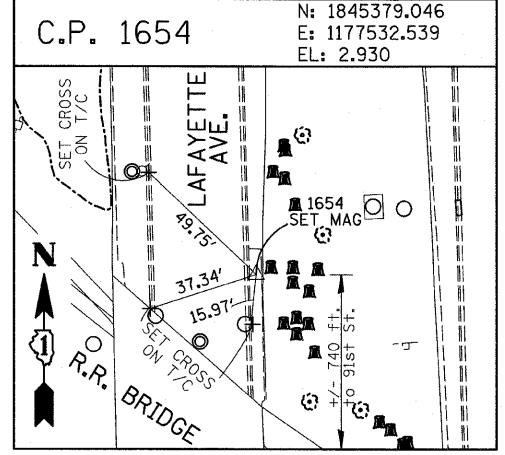
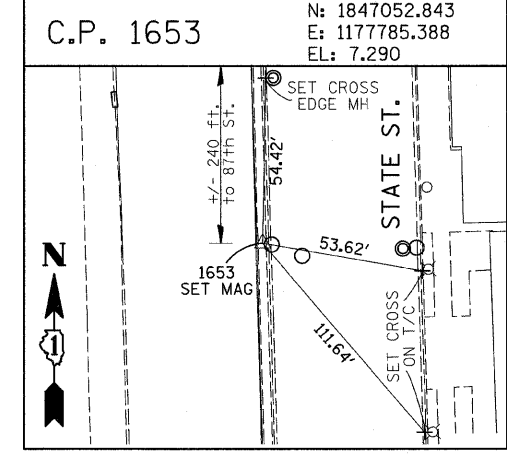
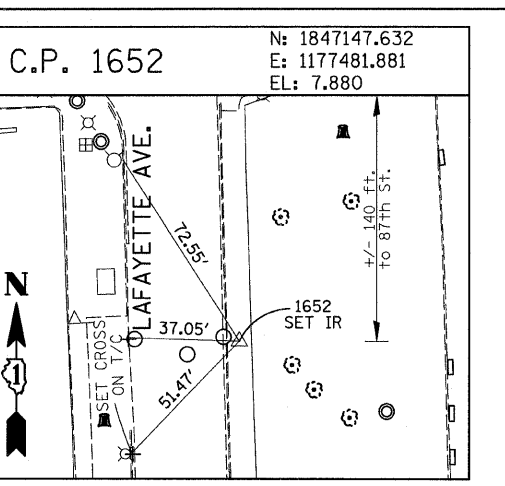
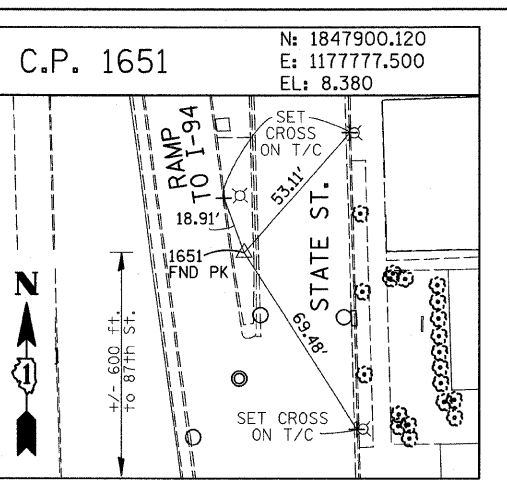
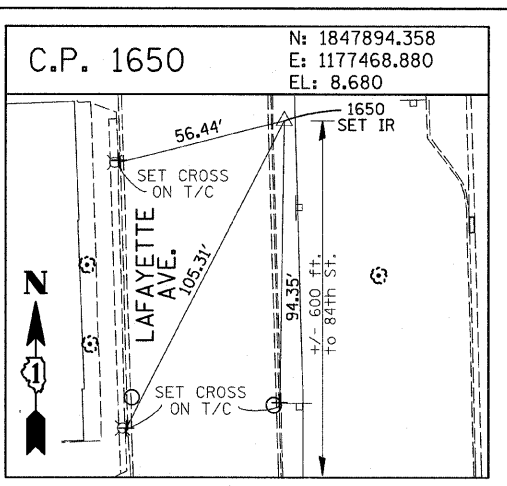
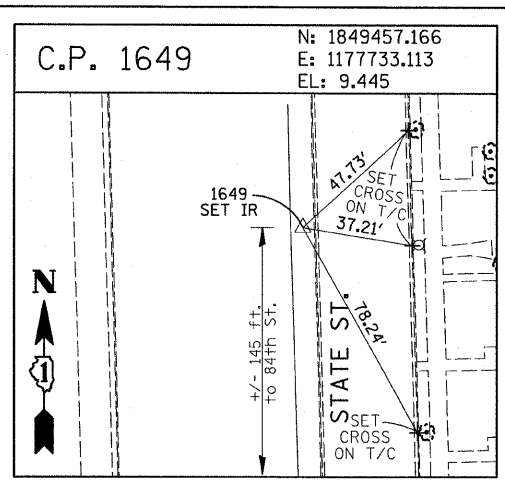
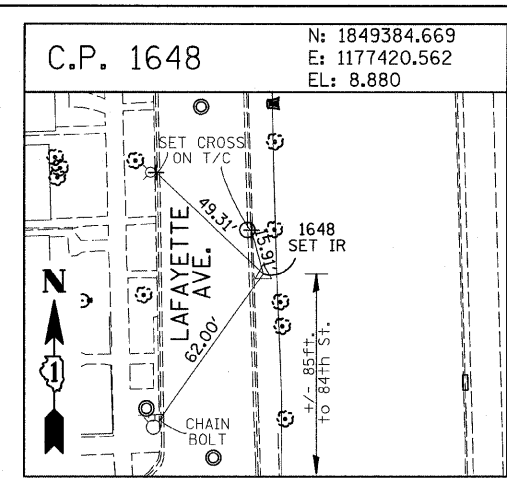


F.A.I. RTE.	SECTION	COUNTY	TOTAL SHEETS	SHEET NO.
94	2005-068 LS	COOK	58	15
STA. 153+08 (SB I-57) TO STA. 221+00 (NB I-94)		1214+95 (SB I-94) TO STA. 2213+00 (NB I-94)		
FED. ROAD DIST. NO.		ILLINOIS FED. AID PROJECT		

60A74



American Surveying Consultants, P.C.
 1637 Frank Rd., Chicago, IL 60641
 800 N. Northwold Highway/Chicago, IL 60631

REVISIONS	
NAME	DATE

ILLINOIS DEPARTMENT OF TRANSPORTATION
 F.A.I. 94 (DAN RYAN EXPRESSWAY)
 SURVEY TIES FOR CONTROL POINTS
 SHEET 4 OF 7

SCALE: 1"=30'
 DATE: JUNE 20, 2008
 DRAWN BY: GSP
 CHECKED BY: MMW

6/20/2008 10:25:28 AM