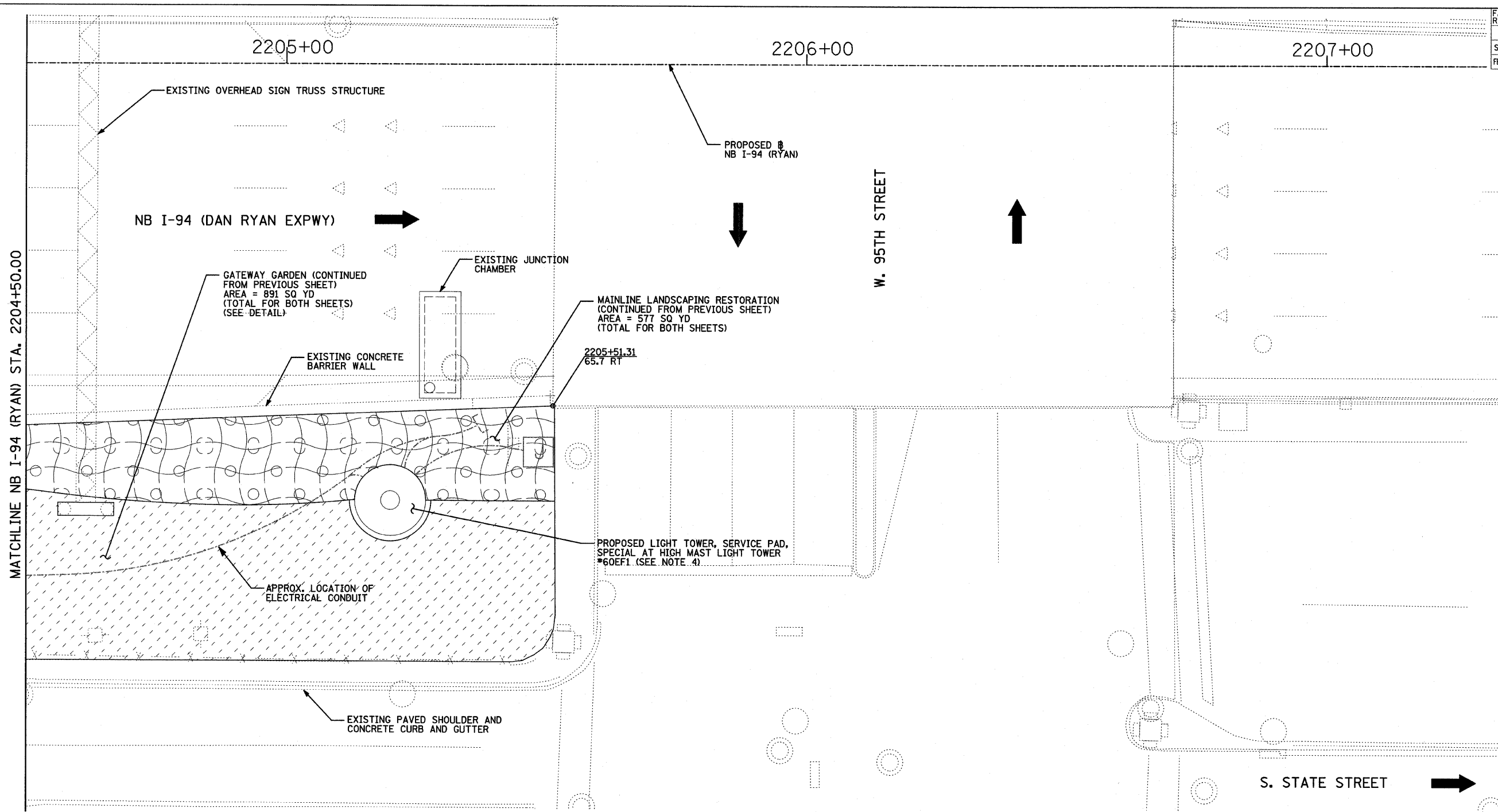
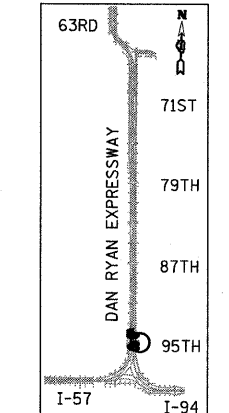


F.A.I. RTE.	SECTION	COUNTY	TOTAL SHEETS	SHEET NO.
94	2005-068 LS	COOK	58	29
STA. 257+76 (NB I-57)		TO STA. 1214+95 (SB I-94)		
FED. ROAD DIST. NO.		ILLINOIS	FED. AID PROJECT	

60A74



MATCHLINE NB I-94 (RYAN) STA. 2204+50.00

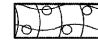
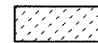



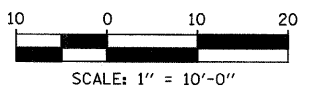
LOCATION MAP

**LANDSCAPING GENERAL PLAN NOTES:**

1. THE SEEDING DATES FOR BARE EARTH SEEDING OF MIXTURE CLASS 2A SHALL BE FROM APRIL 1 TO JUNE 1 AND FROM AUGUST 15 TO SEPTEMBER 30. ALL SEEDING NOT SOWN ACCORDING TO THE SPECIFIED SEASONAL DATE SHALL REQUIRE PRIOR APPROVAL FROM THE ENGINEER. FAILURE TO SECURE SUCH APPROVAL SHALL RESULT IN THE REJECTION OF THE SEEDING AND REPLACEMENT BY THE CONTRACTOR AS HIS/HER EXPENSE.
2. AREAS TO BE SEEDED BETWEEN NOVEMBER 1 AND APRIL 1 SHALL REQUIRE DORMANT SEEDING, WHICH SHALL BE INCLUDED IN THE COST OF SEEDING CLASS 2A.
3. LAYOUT OF LANDSCAPED AREAS WILL REQUIRE APPROVAL OF THE ENGINEER PRIOR TO SEEDING AND PLANTING.
4. QUANTITIES FOR TOPSOIL FURNISH AND PLACE, 12" AND COMPOST FURNISH AND PLACE, 6" HAVE BEEN PROVIDED FOR THE AREA AROUND THE HMLT SERVICE PAD. A RADIUS OF 20 FT FROM THE EDGE OF THE SERVICE PAD WAS USED TO CALCULATE THIS QUANTITY.

**LEGEND:**

-  EROSION CONTROL BLANKET, SEEDING, CLASS 2A, NITROGEN, PHOSPHORUS, AND POTASSIUM FERTILIZER NUTRIENTS
-  GATEWAY AREA (SEE LANDSCAPE PLANS)
-  DIRECTION OF TRAFFIC



REVISIONS	
NAME	DATE

ILLINOIS DEPARTMENT OF TRANSPORTATION  
 F.A.I. 94 (DAN RYAN EXPRESSWAY)  
 MAINLINE LANDSCAPING RESTORATION  
 SE & NE QUADRANTS AT 95TH ST - NB I-94  
 STA. 2204+50.00 TO STA. 2205+51.31  
 SHEET 2 OF 3

SCALE: 1"=10'-0"  
 DATE: JUNE 20, 2008

DRAWN BY: JDF  
 CHECKED BY: JPM

**TYLIN** INTERNATIONAL

P:\0227\3\road\6226\10226\10226.dwg 6/20/2008 10:26:11 AM