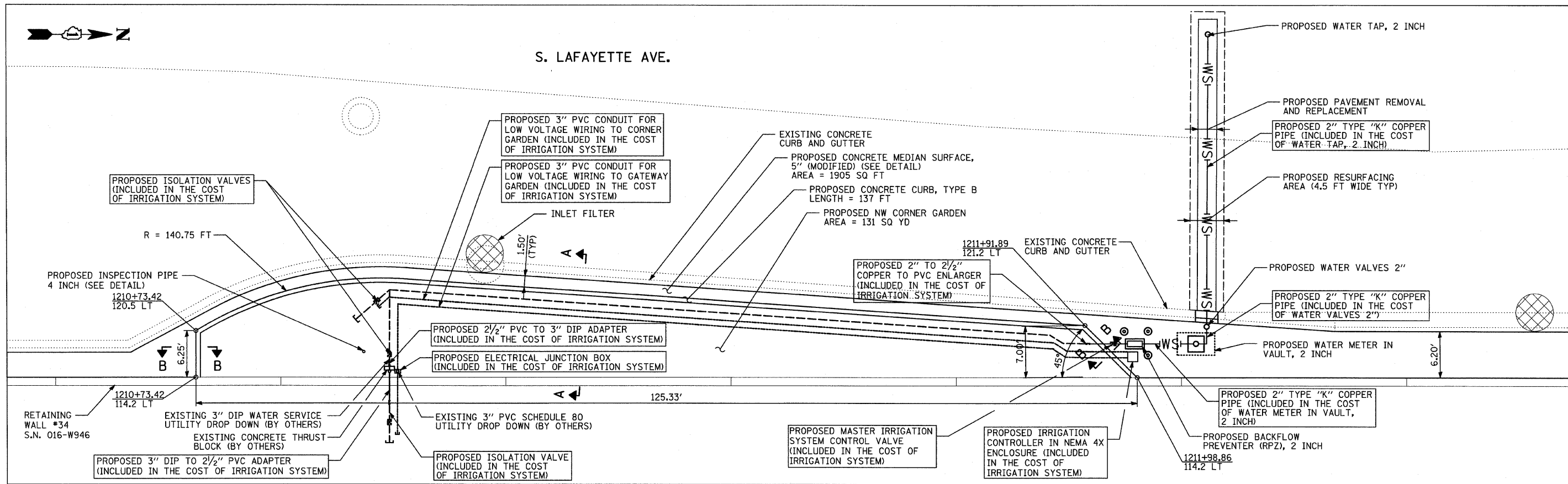
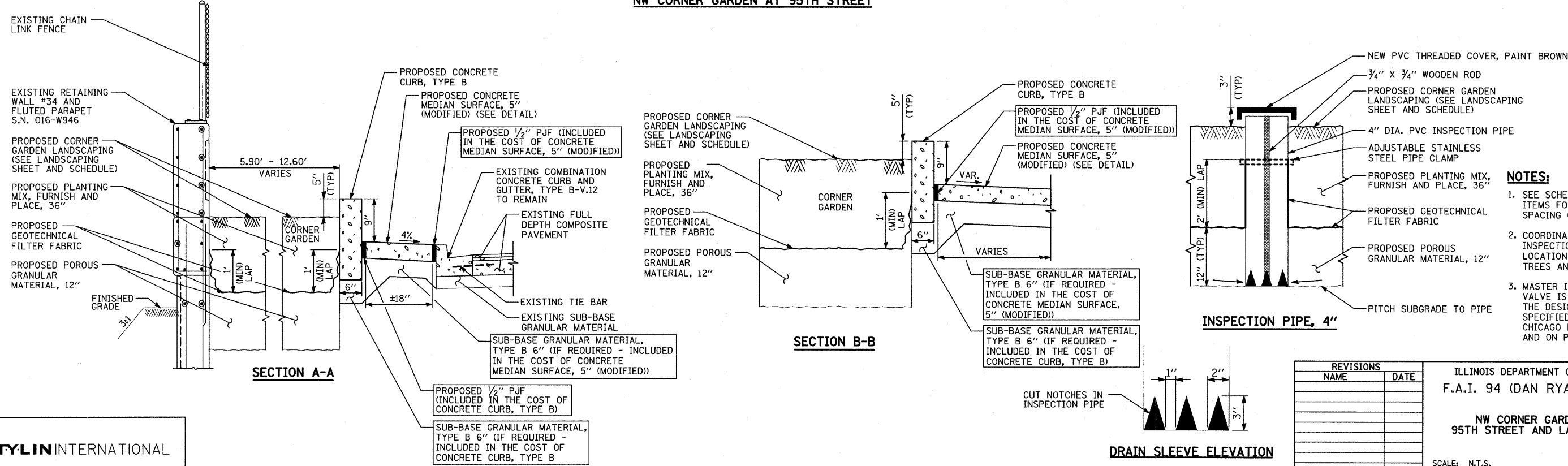


F.A.I. RTE.	SECTION	COUNTY	TOTAL SHEETS	SHEET NO.
94	2005-068 LS	COOK	58	38
STA. 153+09 (SB 1-37) TO STA. 227+16 (NB 1-57)		STA. 1214+25 (SB 1-34) TO STA. 2213+00 (NB 1-34)		
FED. ROAD DIST. NO.		ILLINOIS FED. AID PROJECT		

60A74



**NW CORNER GARDEN AT 95TH STREET**



- NOTES:**
- SEE SCHEDULE OF LANDSCAPE ITEMS FOR TYPE, SIZE, AND SPACING OF PLANT MATERIAL.
  - COORDINATE PLACEMENT OF INSPECTION PIPE WITH LOCATION OF PROPOSED TREES AND SHRUBS.
  - MASTER IRRIGATION CONTROL VALVE IS TO BE INSTALLED AT THE DESIGNATED LOCATION SPECIFIED BY THE CITY OF CHICAGO DURING CONSTRUCTION AND ON PUBLIC PROPERTY.

REVISIONS	
NAME	DATE

ILLINOIS DEPARTMENT OF TRANSPORTATION  
F.A.I. 94 (DAN RYAN EXPRESSWAY)

**NW CORNER GARDEN DETAIL -  
95TH STREET AND LAFAYETTE AVENUE**

SCALE: N.T.S. DRAWN BY: JDF  
DATE: JUNE 20, 2008 CHECKED BY: JPM

**TYLIN INTERNATIONAL**

6/20/2008 10:27:03 AM