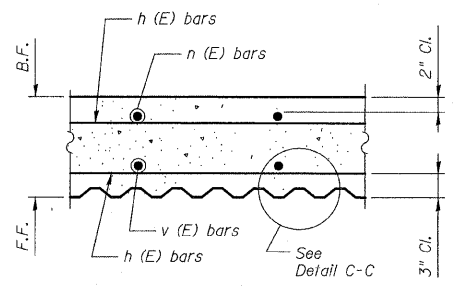
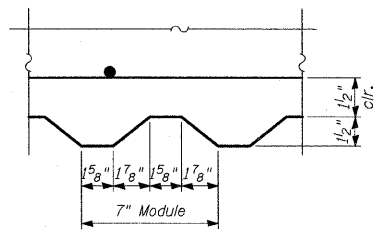


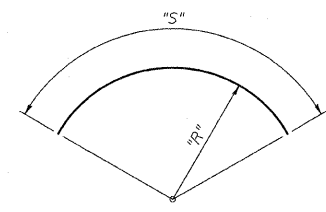
**SECTION A-A**



**SECTION B-B**



**DETAIL C-C**

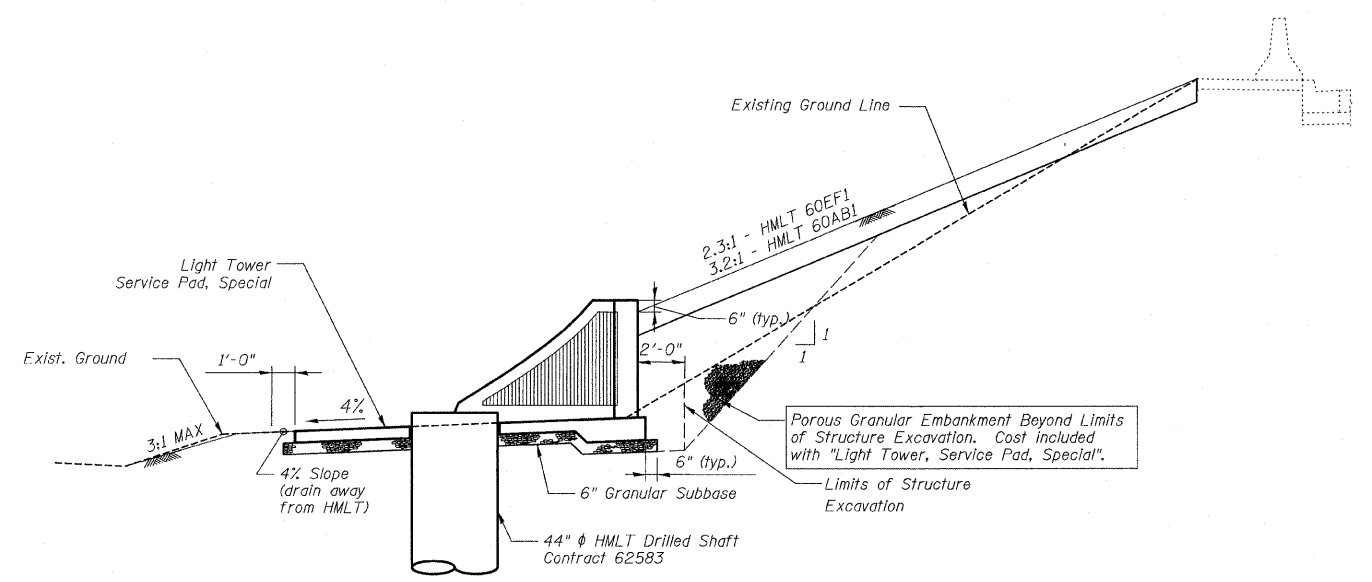


Bar	"R"	"S"
h <sub>1</sub> (E)	7'-7"	23'-6"
h <sub>2</sub> (E)	7'-7"	20'-10"
h <sub>3</sub> (E)	7'-7"	17'-8"
h <sub>4</sub> (E)	7'-7"	14'-6"
h <sub>5</sub> (E)	7'-7"	11'-4"
h <sub>6</sub> (E)	7'-7"	8'-2"
h <sub>7</sub> (E)	7'-1 1/2"	22'-1"
h <sub>8</sub> (E)	7'-1 1/2"	19'-7"
h <sub>9</sub> (E)	7'-1 1/2"	16'-7"
h <sub>10</sub> (E)	7'-1 1/2"	13'-7"
h <sub>11</sub> (E)	7'-1 1/2"	10'-8"
h <sub>12</sub> (E)	7'-1 1/2"	7'-8"
w <sub>1</sub> (E)	7'-7"	24'-4"
w <sub>2</sub> (E)	6'-8"	21'-7"
w <sub>3</sub> (E)	5'-10"	18'-10"
w <sub>4</sub> (E)	4'-9"	15'-5"
w <sub>5</sub> (E)	3'-6"	11'-6"

Note: "R" and "S" measured along bar  $\varnothing$   
**BARS w<sub>1</sub>(E) thru w<sub>5</sub>(E) & h<sub>1</sub>(E) thru h<sub>12</sub>(E)**

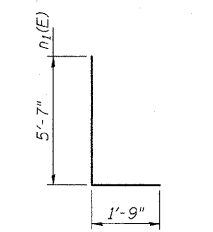
**BILL OF MATERIAL**  
Light Tower Service Pad, Special with 5'-0" Wall (Note 4)

Bar	No.	Size	Length	Shape
h <sub>1</sub> (E)	1	#5	23'-6"	⤴
h <sub>2</sub> (E)	1	#5	20'-10"	⤴
h <sub>3</sub> (E)	1	#5	17'-8"	⤴
h <sub>4</sub> (E)	1	#5	14'-6"	⤴
h <sub>5</sub> (E)	1	#5	11'-4"	⤴
h <sub>6</sub> (E)	1	#5	8'-2"	⤴
h <sub>7</sub> (E)	1	#4	22'-1"	⤴
h <sub>8</sub> (E)	1	#4	19'-7"	⤴
h <sub>9</sub> (E)	1	#4	16'-7"	⤴
h <sub>10</sub> (E)	1	#4	13'-7"	⤴
h <sub>11</sub> (E)	1	#4	10'-8"	⤴
h <sub>12</sub> (E)	1	#4	7'-8"	⤴
n <sub>1</sub> (E)	25	#6	7'-4"	⤴
t <sub>1</sub> (E)	25	#6	5'-1"	⤴
v <sub>1</sub> (E)	7	#4	5'-0"	⤴
v <sub>2</sub> (E)	8	#4	4'-8"	⤴
w <sub>1</sub> (E)	1	#5	24'-4"	⤴
w <sub>2</sub> (E)	1	#5	21'-7"	⤴
w <sub>3</sub> (E)	1	#5	18'-10"	⤴
w <sub>4</sub> (E)	1	#5	15'-5"	⤴
w <sub>5</sub> (E)	1	#5	11'-6"	⤴

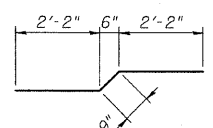


**SECTION THRU EMBANKMENT**

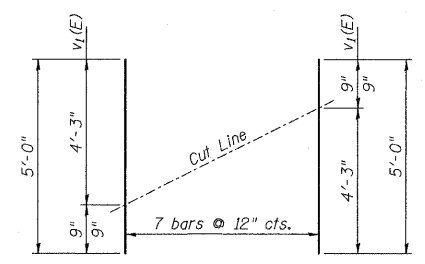
(At Typ. Tower Location)  
HMLT not shown for clarity



**BAR n<sub>1</sub>(E)**



**BAR t<sub>1</sub>(E)**



Order v<sub>1</sub>(E) bars full length and cut to fit as shown. Use remainder of bars as indicated on plans.

**\* CUTTING DIAGRAM**  
Bars v<sub>1</sub>(E)

**NOTES**

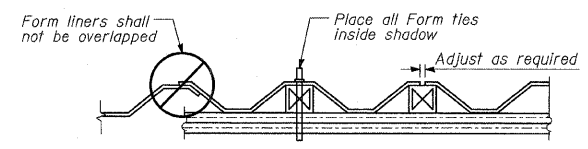
- F.F. and B.F. denote Front Face and Back Face, respectively.
- HMLT denotes High Mast Light Tower.
- See IDOT Standard Drawing BE501 for additional High Mast Light Tower foundation and ground well details.
- Reinforcement Bars designated (E) shall be epoxy coated.
- Refer to High Mast Light Tower Service Pad, Special & Retaining Wall Details 1 for location and orientation of conduit sleeves and grounding wells.
- Contractor shall maintain integrity of Frontage Roads as may be required in excavating for HMLT service pad walls.
- Provide Protective Coat to top, front face, exposed portion of back face, and ends of walls, and top and edges of pad.

**TOTAL BILL OF MATERIAL**

Item	Unit	Total
Light Tower, Service Pad, Special	Each	2

**BILL OF MATERIAL**  
(Per HMLT)

Item	Unit	Total
Welded Wire Fabric	Sq. Yd.	18
Structure Excavation	Cu. Yd.	11
Concrete Structures	Cu. Yd.	7.2
Reinforcement Bars, Epoxy Coated	Pound	775
Rustication Finish	Sq. Ft.	55
Protective Coat	Sq. Yd.	29
Sub-Base Granular Material, Type B 6"	Sq. Yd.	22
Porous Granular Embankment	Cu. Yd.	48



**SUGGESTED FORMWORK DETAIL**

REVISIONS	
NAME	DATE

ILLINOIS DEPARTMENT OF TRANSPORTATION  
F.A.I. 94 (DAN RYAN EXPRESSWAY)  
HIGH MAST LIGHT TOWER SERVICE PAD,  
SPECIAL & RETAINING WALL DETAILS  
SHEET 2 OF 2

SCALE: N.T.S.  
DATE: JUNE 20, 2008  
DESIGNED BY: MAF  
DRAWN BY: MAF, TB  
CHECKED BY: PF