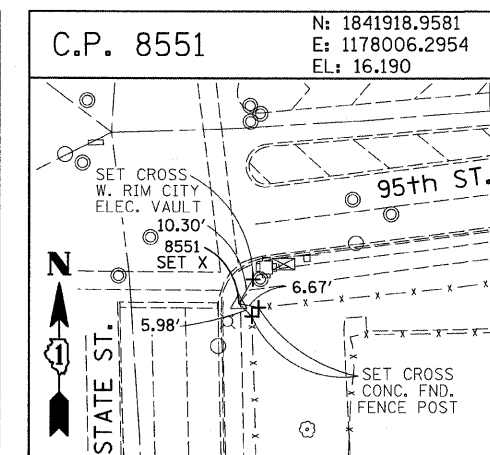
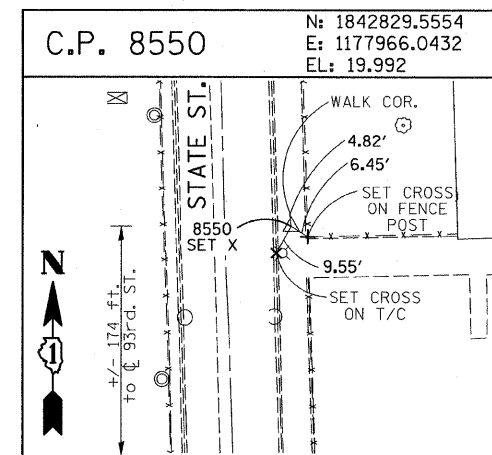
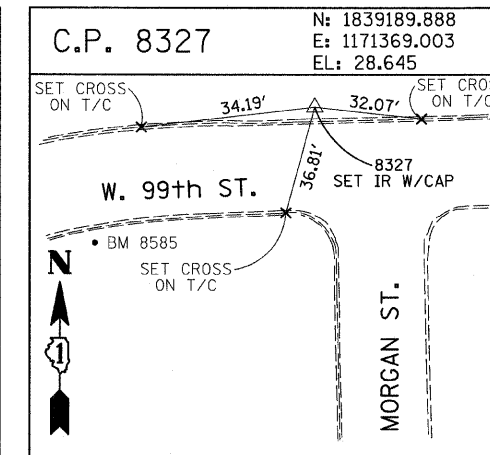
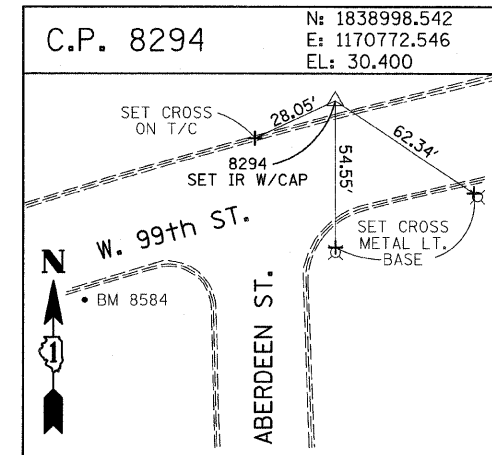
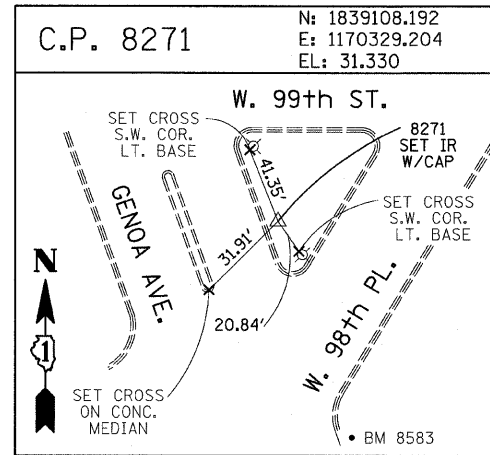
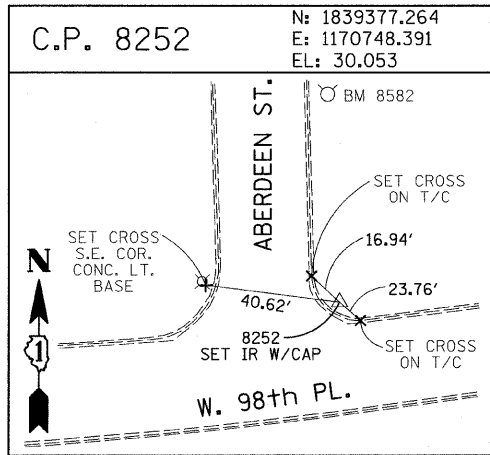
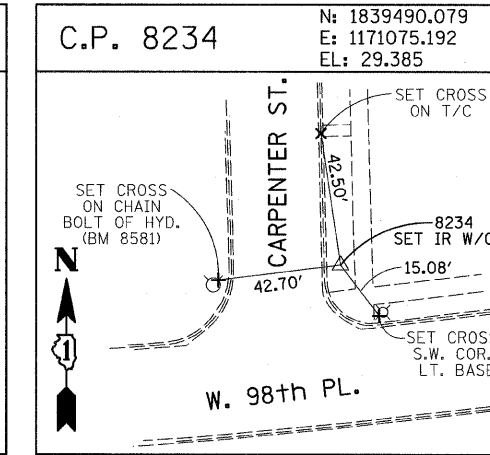
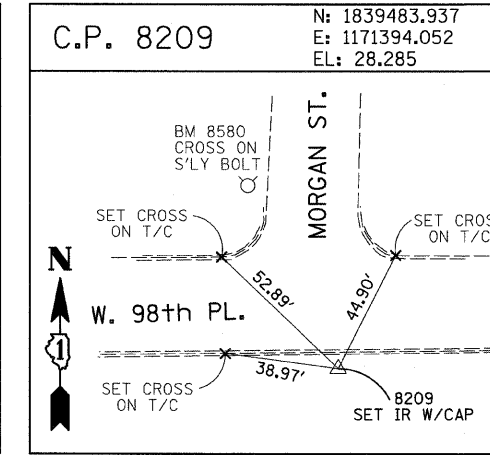
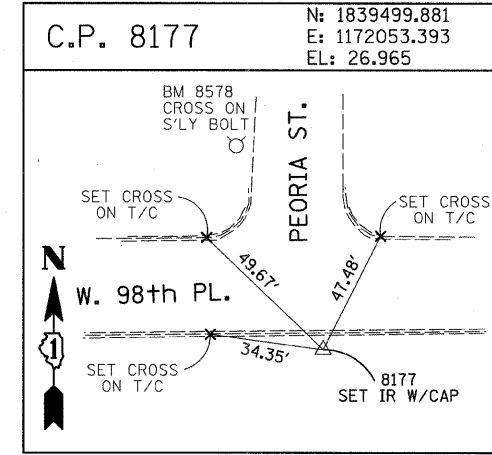
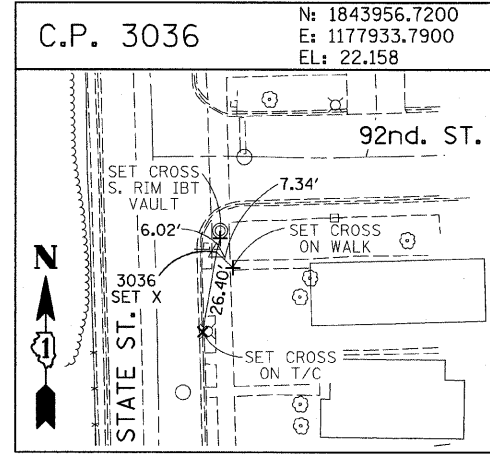
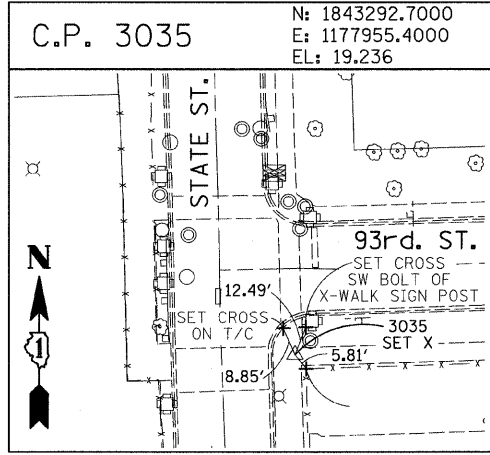
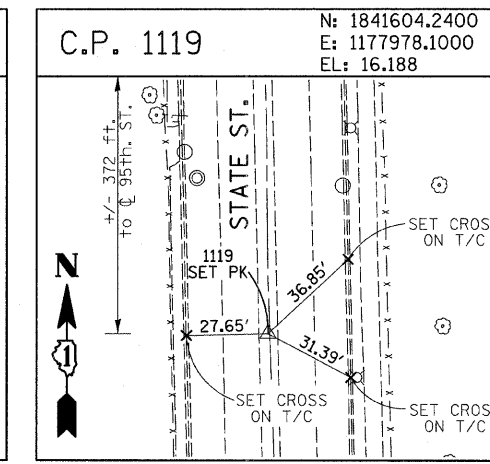
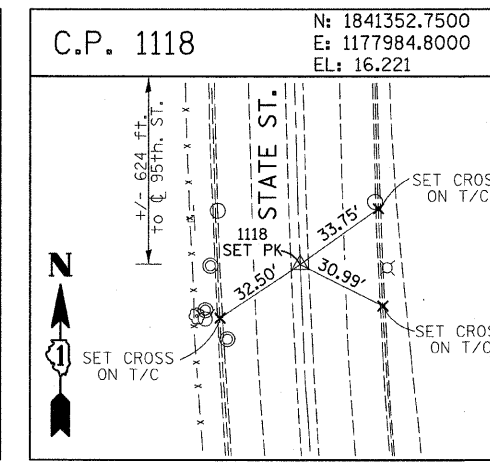
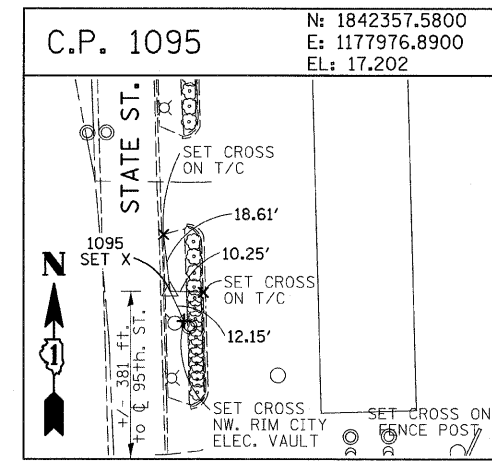
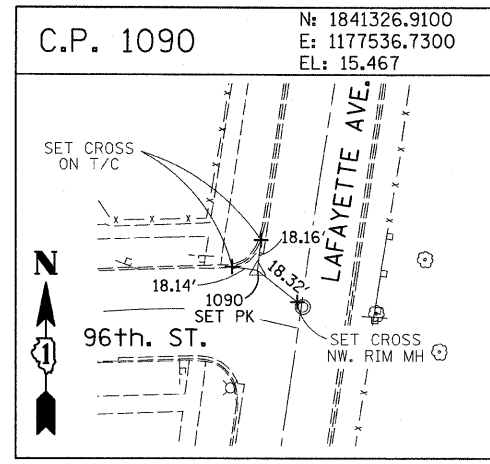
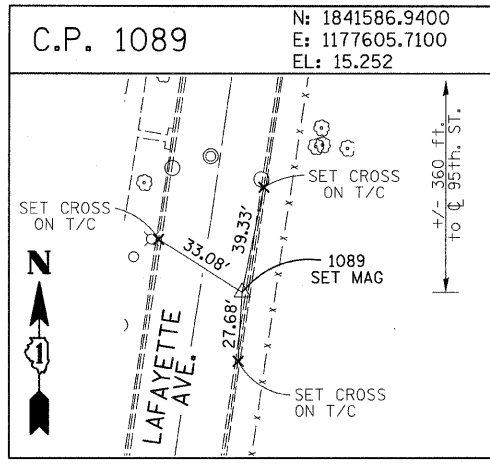


| F.A.I. RTE. | SECTION | COUNTY | TOTAL SHEETS | SHEET NO. |
|--|-------------|--------|--------------|-----------|
| 94 | 2005-069 LS | COOK | 60 | 17 |
| STA. 1255+18 (NB I-94) TO STA. 1263+40 (SB I-94) | | | | |
| FED. ROAD DIST. NO. ILLINOIS FED. AID PROJECT | | | | |

60A75



American Surveying Consultants, P.C.
 1837 Plank Rd., Naperville, IL 60563

| REVISIONS | |
|-----------|------|
| NAME | DATE |
| | |
| | |
| | |
| | |
| | |

ILLINOIS DEPARTMENT OF TRANSPORTATION
 F.A.I. 94 (DAN RYAN EXPRESSWAY)
 SURVEY TIES FOR CONTROL POINTS
 SHEET 6 OF 7
 SCALE: 1"=30'
 DATE: JUNE 20, 2008
 DRAWN BY: GSP
 CHECKED BY: MMW

8/23/2008 9:36:22 AM