

F.A.I. RTE.	SECTION	COUNTY	TOTAL SHEETS	SHEET NO.
94	2005-070 LS	COOK	65	1
FED. ROAD DIST. NO.	ILLINOIS FED. AID PROJECT			
D-91-106-06		60A76		

INDEX OF SHEETS

FOR INDEX OF SHEETS, SEE SHEET NO. 2

PROJECT LOCATED IN THE CITY OF CHICAGO

DAN RYAN EXPRESSWAY:	ADT (2020)	DESIGN SPEED	POSTED SPEED
SB I-94 (DAN RYAN)	140,500	60 MPH	55 MPH
SB 79TH STREET C-D ENTRANCE RAMP	15,300	45 MPH	40 MPH
SB 79TH STREET C-D EXIT RAMP	7,300	45 MPH	40 MPH
NB I-94 (DAN RYAN)	151,800	60 MPH	55 MPH
NB 79TH STREET C-D EXIT RAMP	14,000	45 MPH	40 MPH
NB 79TH STREET C-D ENTRANCE RAMP	9,200	45 MPH	40 MPH

DESCRIPTION OF PROJECT

LANDSCAPING AND IRRIGATION OF GATEWAYS AND CORNER GARDENS LOCATED WITHIN THE PROJECT LIMITS, AND FLUTED KNEE WALL CONSTRUCTION IN THE SOUTHWEST QUADRANT.

STATE OF ILLINOIS
DEPARTMENT OF TRANSPORTATION
DIVISION OF HIGHWAYS

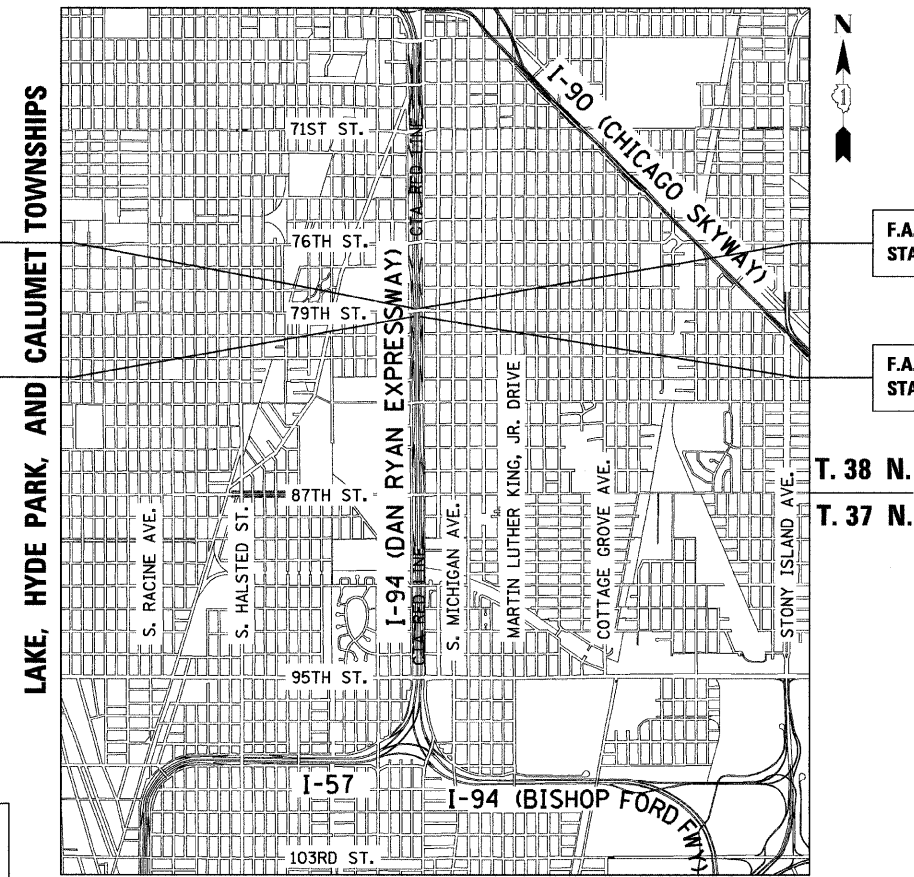
PROPOSED HIGHWAY PLANS

F.A.I. ROUTE 94 (DAN RYAN EXPRESSWAY)
SECTION 2005-070 LS
GATEWAYS AND CORNER GARDENS
NE, SE, NW & SW QUADRANTS AT 79TH STREET



LOCATION OF SECTION INDICATED THUS: -

COOK COUNTY
C-91-106-06
R. 14 E.

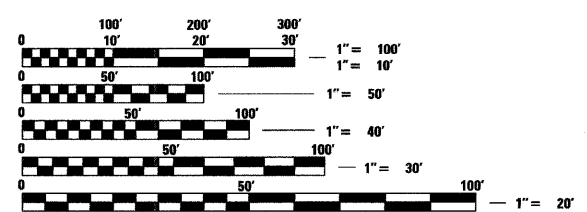


F.A.I. 94 (RYAN) PROJECT LIMIT
STA. 1318 + 60.52 (SB I-94)

F.A.I. 94 (RYAN) PROJECT LIMIT
STA. 1308 + 45.74 (SB I-94)

F.A.I. 94 (RYAN) PROJECT LIMIT
STA. 2316 + 89.45 (NB I-94)

F.A.I. 94 (RYAN) PROJECT LIMIT
STA. 2308 + 17.02 (NB I-94)



FULL SIZE PLANS HAVE BEEN PREPARED USING STANDARD ENGINEERING SCALES; REDUCED SIZED PLANS WILL NOT CONFORM TO STANDARD SCALES. IN MAKING MEASUREMENTS ON REDUCED PLANS, THE ABOVE SCALES MAY BE USED

DIGGER:
CHICAGO UTILITY ALERT NETWORK
(312) 744-7000

CTA CONTACT:
DAVID HEARD
MANAGER, CONSTRUCTION MANAGEMENT OVERSIGHT
(312) 681-3862

CONTRACT NO. 60A76

LOCATION MAP

GROSS LENGTH OF PROJECT = 1,887.21 FT. = 0.36 MI.
NET LENGTH OF PROJECT = 1,887.21 FT. = 0.36 MI.

Signed Ernest C. Wong, R.L.A. Il. Lic. No. 57-000818 Expires 08-31-2009.
Date 04.28.2008
For Landscape Drawings 22-27, 37-39, 416



Signed Dean A. Kieseling, P.E. Il. Lic. No. 32957 Expires 11-30-2009.
Date 04-28-08

STATE OF ILLINOIS
DEPARTMENT OF TRANSPORTATION
DIVISION OF HIGHWAYS

SUBMITTED APRIL 29, 20 08

Deann M. O'Keefe
DEPUTY DIRECTOR OF HIGHWAYS, REGION ENGINEER

June 27, 20 08
 Eric F. Blum
ENGINEER OF DESIGN AND ENVIRONMENT

June 27, 20 08
 Christine M. Reed
DIRECTOR OF HIGHWAYS, CHIEF ENGINEER

CONTRACT 22E

DISTRICT ONE DESIGN / PROJECT MANAGER:
BRIAN KUTTAB (847) 705 - 4431

TYLIN INTERNATIONAL
PRINTED BY THE AUTHORITY OF THE STATE OF ILLINOIS