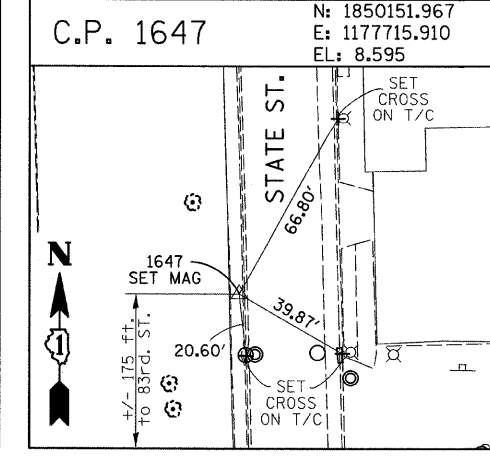
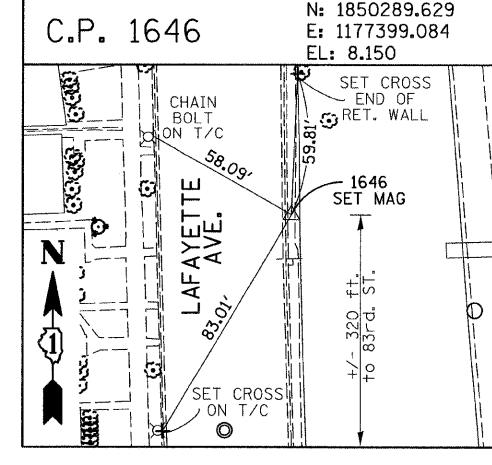
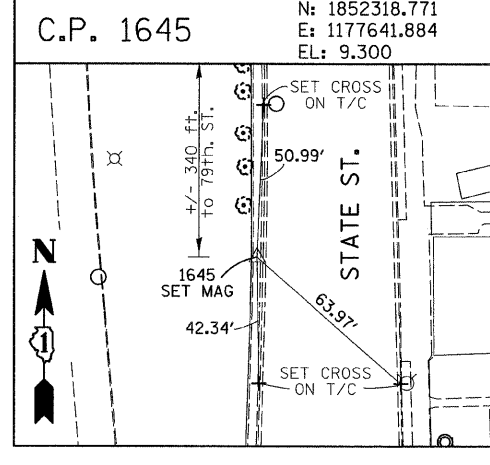
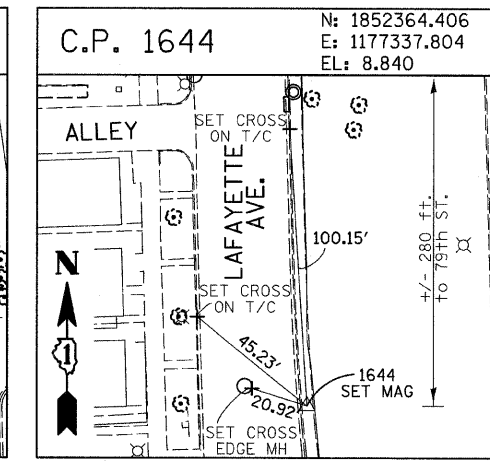
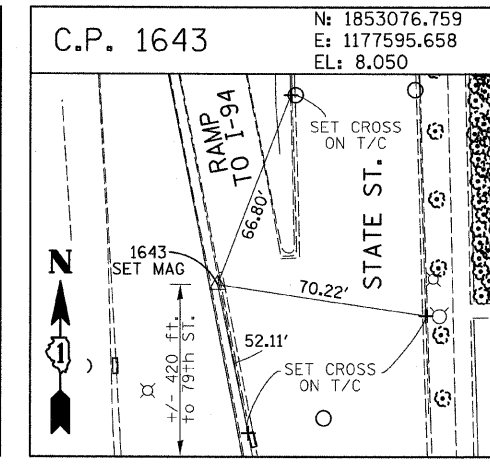
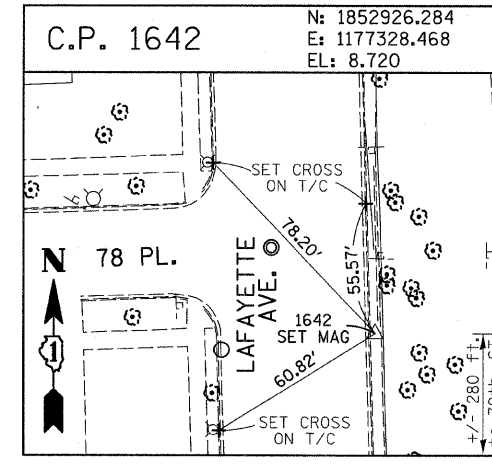
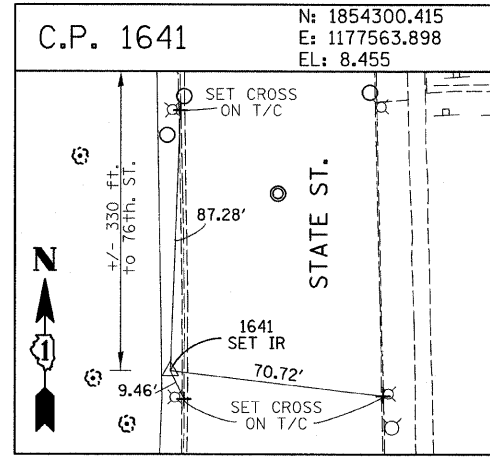
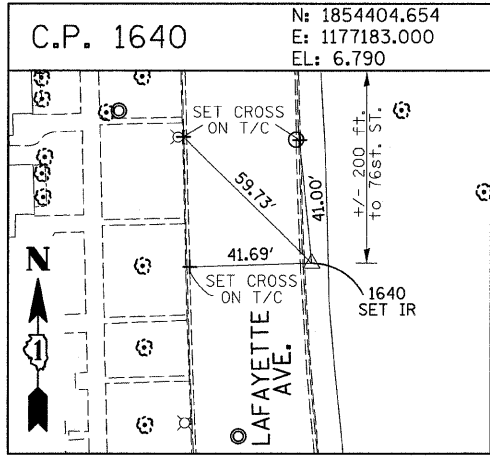
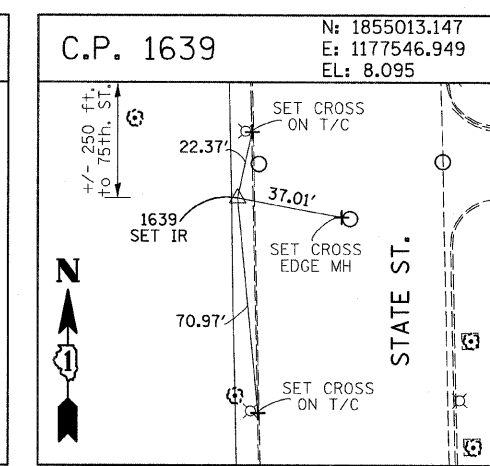
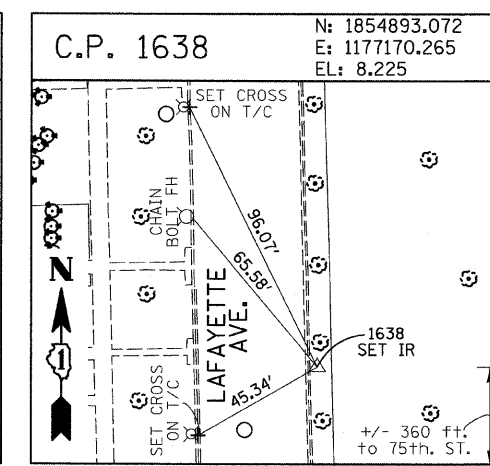
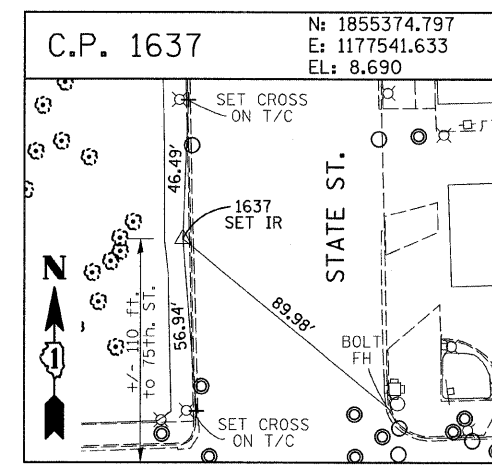
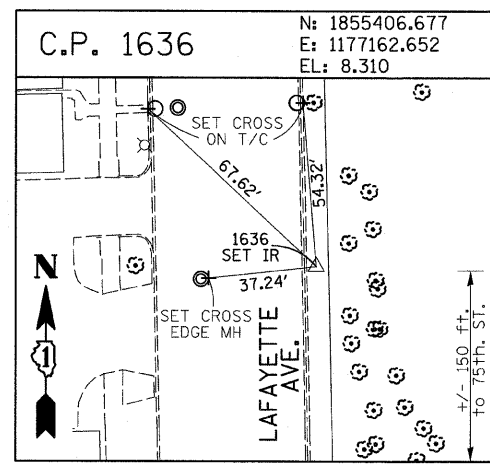
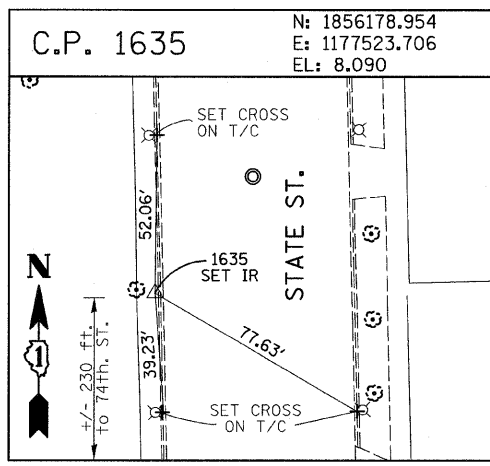
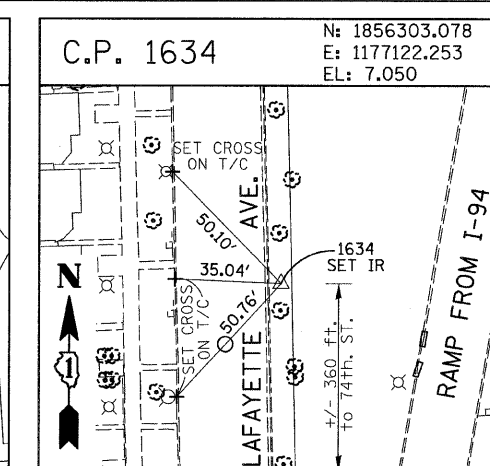
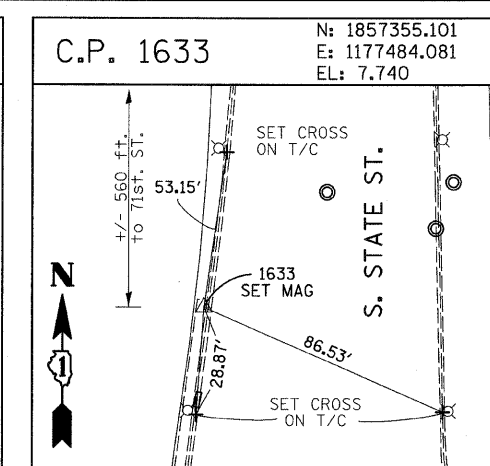
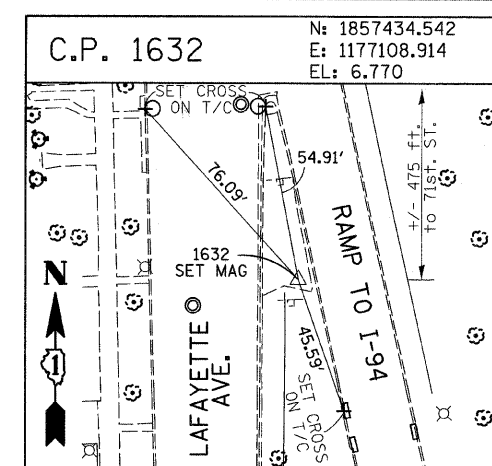
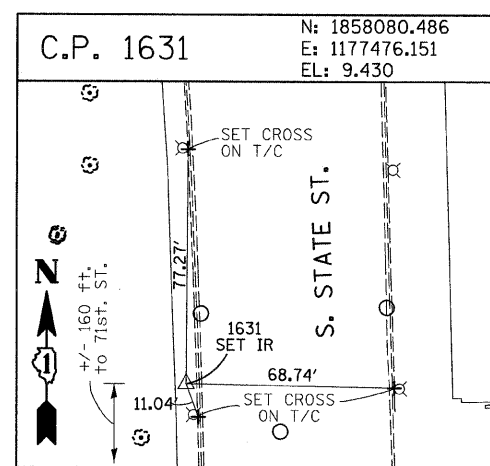
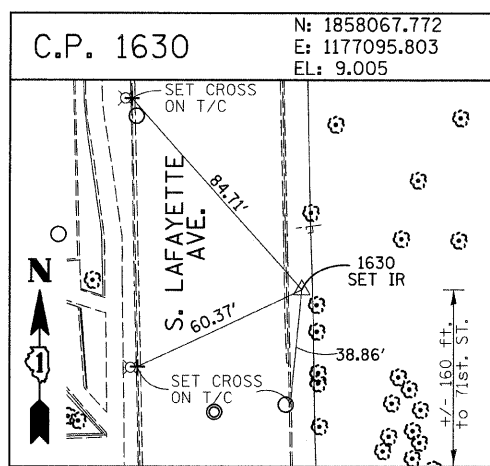


F.A.I. RTE.	SECTION	COUNTY	TOTAL SHEETS	SHEET NO.
94	2005-070 LS	COOK	65	14
STA. 1308+11 (NB I-94) TO STA. 1318+61 (SB I-94)				
FED. ROAD DIST. NO. ILLINOIS FED. AID PROJECT				

60A76



American Surveying Consultants, P.C.
 1537 First St., Suite 200, Naperville, IL 60563
 (630) 335-1100

REVISIONS	
NAME	DATE

ILLINOIS DEPARTMENT OF TRANSPORTATION
 F.A.I. 94 (DAN RYAN EXPRESSWAY)
 SURVEY TIES FOR CONTROL POINTS
 SHEET 3 OF 7
 SCALE: 1"=30'
 DATE: MAY 1, 2008
 DRAWN BY: GSP
 CHECKED BY: MMW

PA-02-313 Road & 229 v120907 3b.dgn 6/10/07 PM 4/29/2008