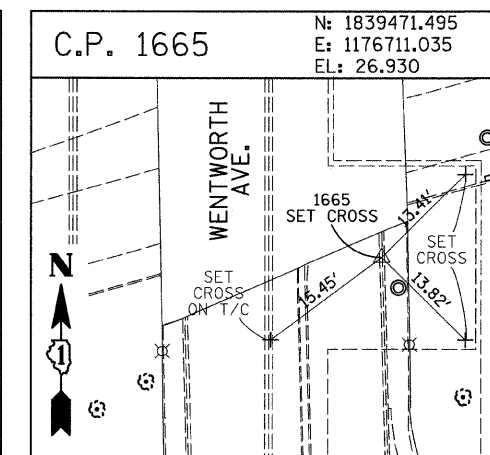
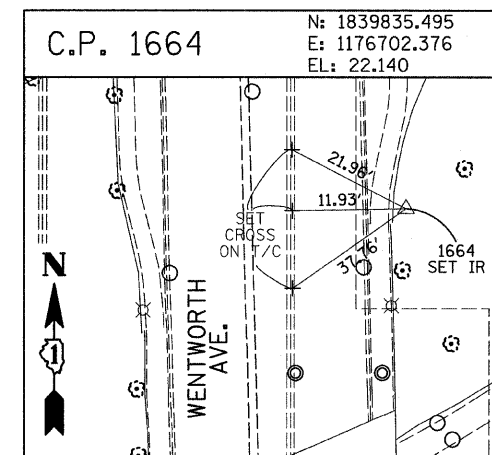
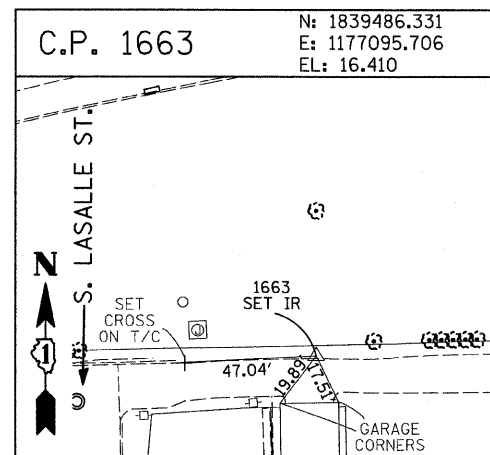
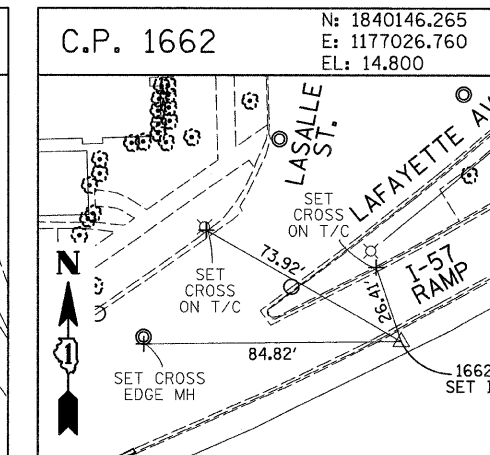
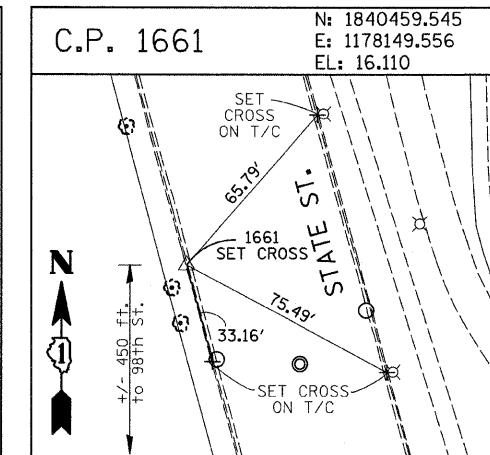
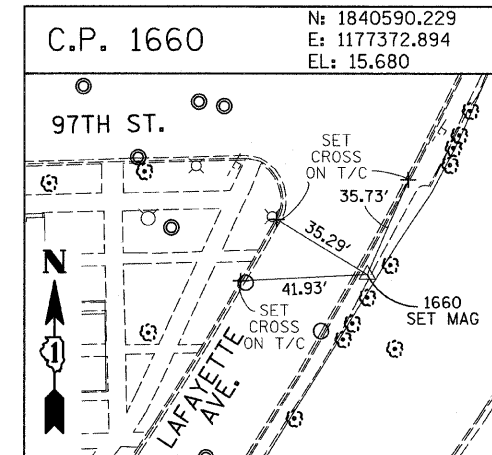
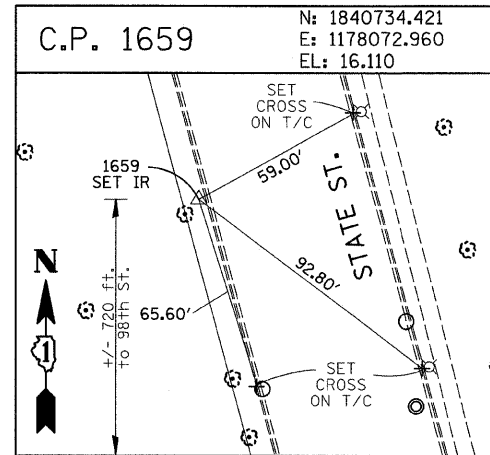
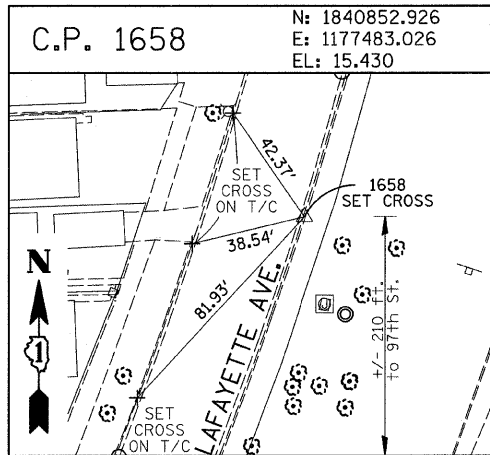
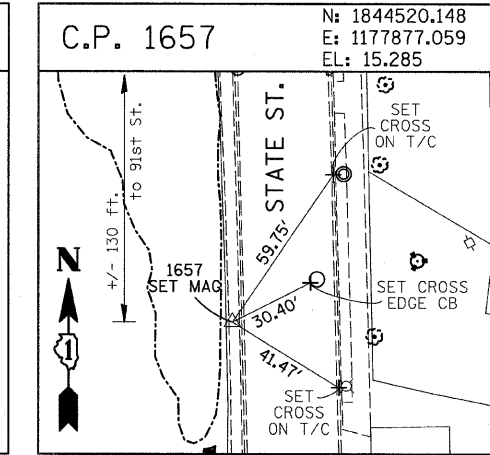
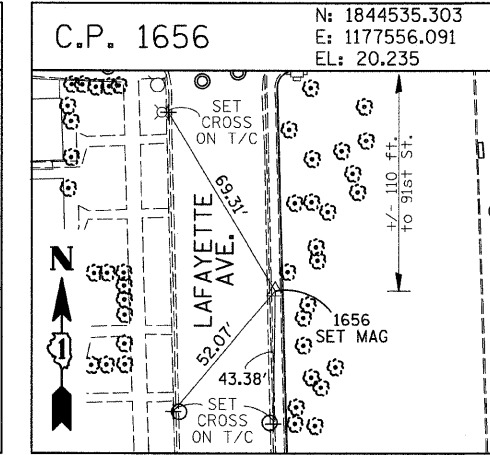
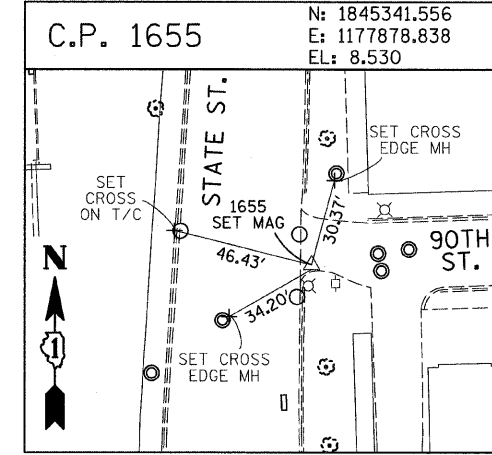
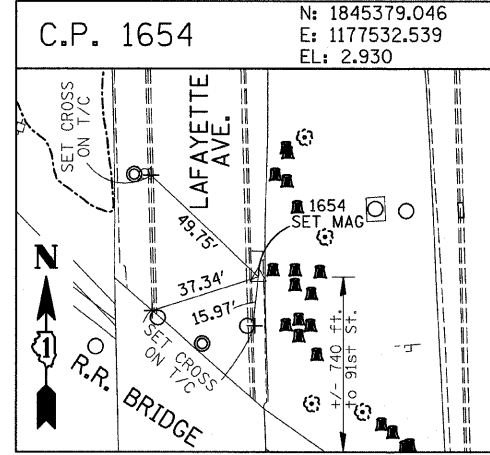
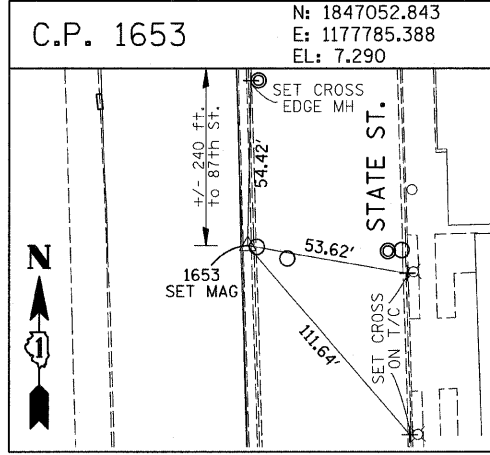
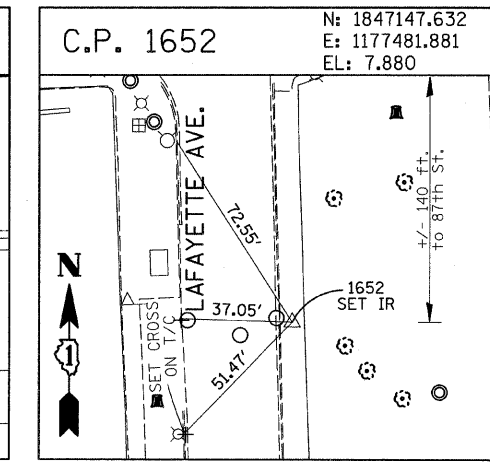
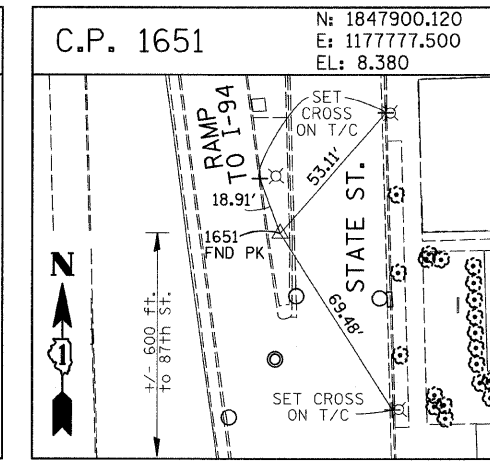
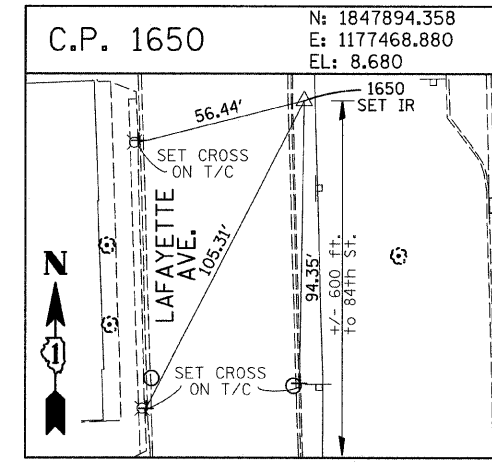
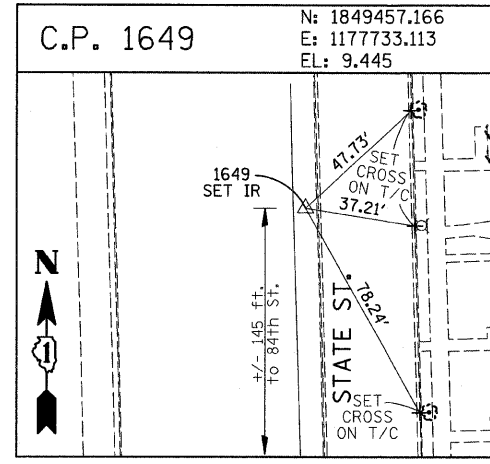
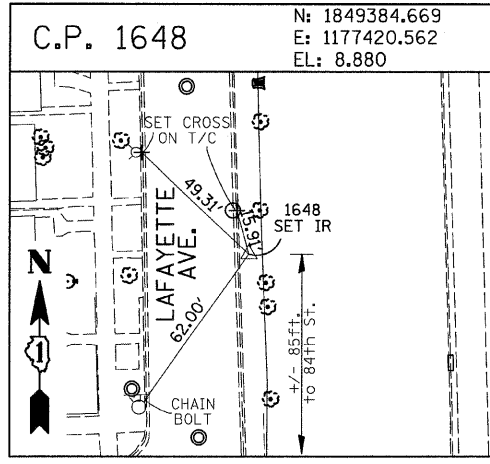


F.A.I. RTE.	SECTION	COUNTY	TOTAL SHEETS	SHEET NO.
94	2005-070 LS	COOK	65	15
STA. 1308+17 (NB I-94) TO STA. 1318+61 (SB I-94)		2316+90 (NB I-94) TO STA. 1318+61 (SB I-94)		
FED. ROAD DIST. NO.		ILLINOIS FED. AID PROJECT		

60A76



American Surveying Consultants, P.C.
 1637 Park St., Suite 101, N. 6101, 6026 N. Northbrook, Illinois, IL 60062
 815-480-2211

REVISIONS	
NAME	DATE

ILLINOIS DEPARTMENT OF TRANSPORTATION
 F.A.I. 94 (DAN RYAN EXPRESSWAY)
 SURVEY TIES FOR CONTROL POINTS
 SHEET 4 OF 7
 SCALE: 1"=30'
 DATE: MAY 1, 2008
 DRAWN BY: GSP
 CHECKED BY: MMW

PA-02-37-3 road to 2901 20050830.dwg 6/16/08 PM 4/29/2008