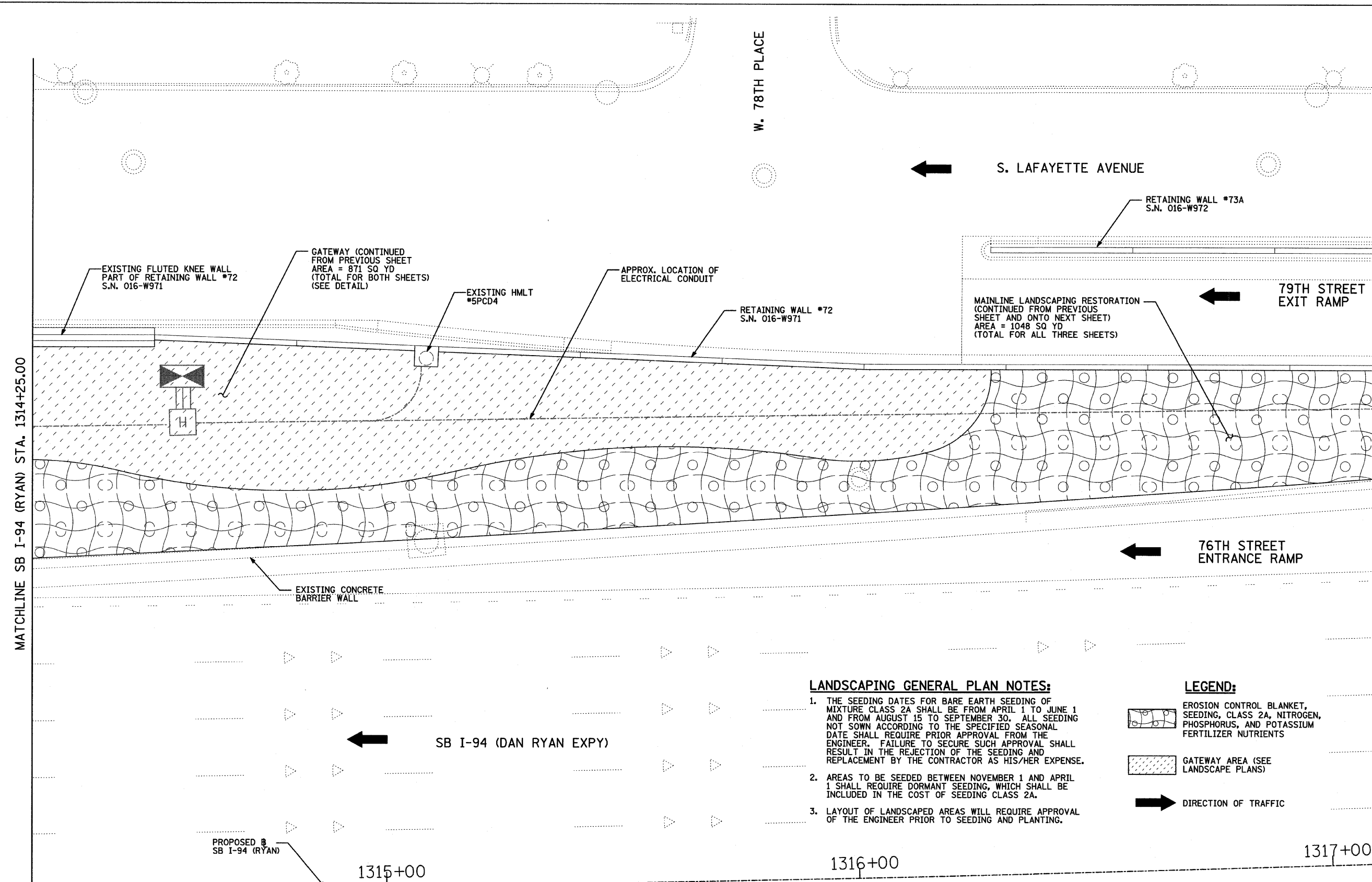


| | | | | |
|------------------------|---------------------------|------------------|-------------------|-----------|
| F.A.I. RTE. | SECTION | COUNTY | TOTAL SHEETS | SHEET NO. |
| 94 | 2005-070 LS | COOK | 65 | 44 |
| STA. 1308+16 (SB I-94) | TO STA. 1318+51 (SB I-94) | | 2316+20 (NB I-94) | |
| FED. ROAD DIST. NO. | ILLINOIS | FED. AID PROJECT | | |

60A76



MATCHLINE SB I-94 (RYAN) STA. 1314+25.00

MATCHLINE SB I-94 (RYAN) STA. 1317+10.00

W. 78TH PLACE

S. LAFAYETTE AVENUE

79TH STREET EXIT RAMP

76TH STREET ENTRANCE RAMP

SB I-94 (DAN RYAN EXPY)

PROPOSED SB I-94 (RYAN)

1315+00


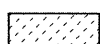

1316+00

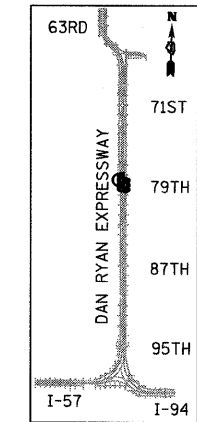
1317+00

LANDSCAPING GENERAL PLAN NOTES:

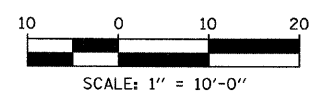
1. THE SEEDING DATES FOR BARE EARTH SEEDING OF MIXTURE CLASS 2A SHALL BE FROM APRIL 1 TO JUNE 1 AND FROM AUGUST 15 TO SEPTEMBER 30. ALL SEEDING NOT SOWN ACCORDING TO THE SPECIFIED SEASONAL DATE SHALL REQUIRE PRIOR APPROVAL FROM THE ENGINEER. FAILURE TO SECURE SUCH APPROVAL SHALL RESULT IN THE REJECTION OF THE SEEDING AND REPLACEMENT BY THE CONTRACTOR AS HIS/HER EXPENSE.
2. AREAS TO BE SEEDED BETWEEN NOVEMBER 1 AND APRIL 1 SHALL REQUIRE DORMANT SEEDING, WHICH SHALL BE INCLUDED IN THE COST OF SEEDING CLASS 2A.
3. LAYOUT OF LANDSCAPED AREAS WILL REQUIRE APPROVAL OF THE ENGINEER PRIOR TO SEEDING AND PLANTING.

LEGEND:

-  EROSION CONTROL BLANKET, SEEDING, CLASS 2A, NITROGEN, PHOSPHORUS, AND POTASSIUM FERTILIZER NUTRIENTS
-  GATEWAY AREA (SEE LANDSCAPE PLANS)
-  DIRECTION OF TRAFFIC



LOCATION MAP



TYLIN INTERNATIONAL

| REVISIONS | |
|-----------|------|
| NAME | DATE |
| | |
| | |
| | |
| | |
| | |
| | |
| | |
| | |
| | |
| | |

ILLINOIS DEPARTMENT OF TRANSPORTATION
F.A.I. 94 (DAN RYAN EXPRESSWAY)
MAINLINE LANDSCAPING RESTORATION
SW & NW QUADRANTS AT 79TH ST. - SB I-94
STA. 1314+25.00 TO STA. 1317+10.00
SHEET 3 OF 4

SCALE: 1"=10'-0"
DATE: MAY 1, 2008

DRAWN BY: JDF
CHECKED BY: JPM

4/29/2008 6:42:51 PM