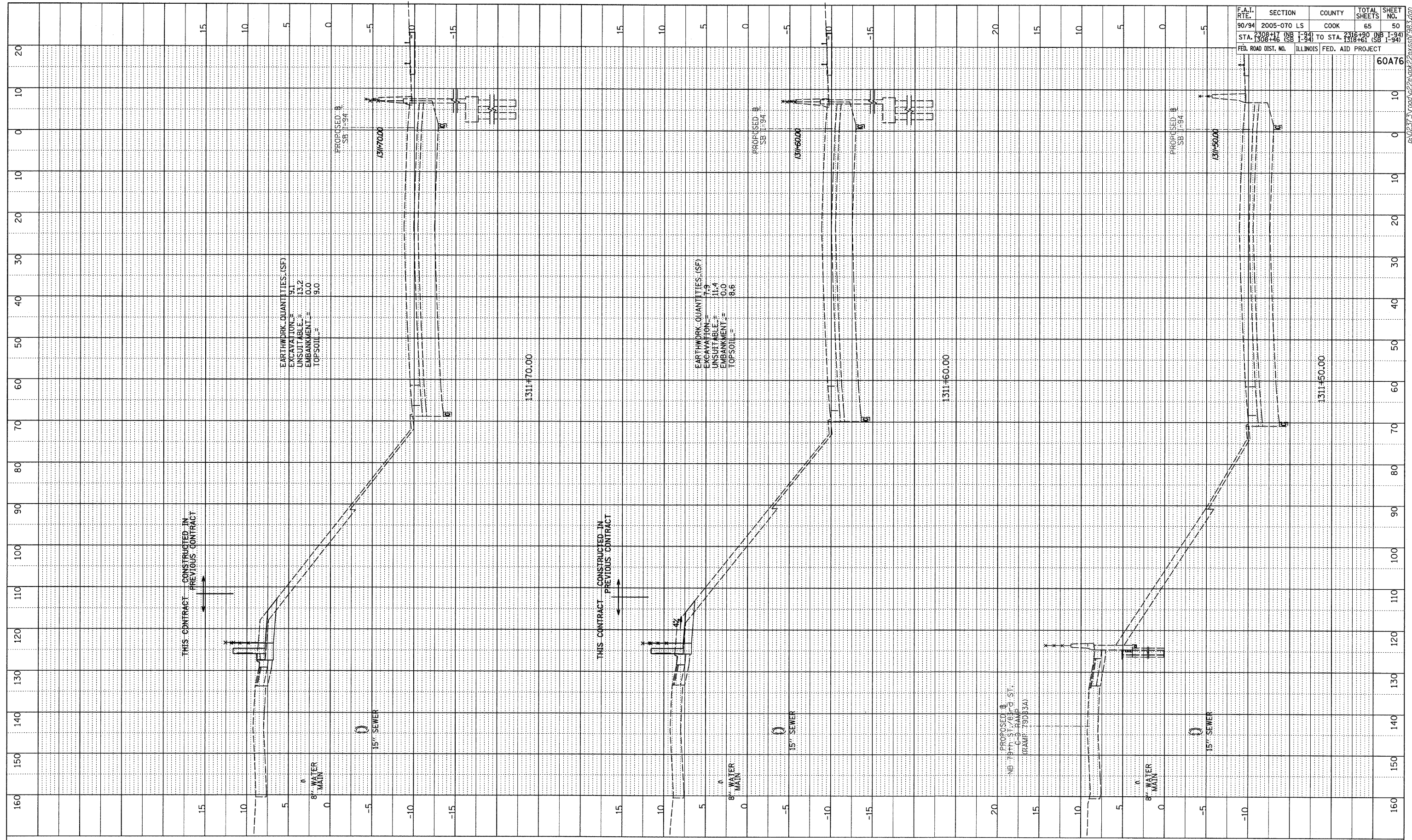
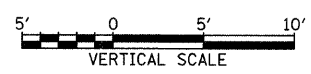
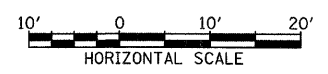


PROFILE	SURVEYED	BY	DATE
NOTE BOOK	GRADES CHECKED		
NO.	BY		
	NO.		
	NO.		



F.A.I. RTE.	SECTION	COUNTY	TOTAL SHEETS	SHEET NO.
90/94	2005-070 LS	COOK	65	50
STA. 1308+46 (SB I-94)	TO STA. 2316+90 (NB I-94)			
	STA. 1308+46 (SB I-94)			
FED. ROAD DIST. NO.	ILLINOIS	FED. AID PROJECT		60A76

TYLIN INTERNATIONAL



SB I-94 (DAN RYAN EXPRESSWAY)  
STA. 1311+50 TO STA. 1311+70