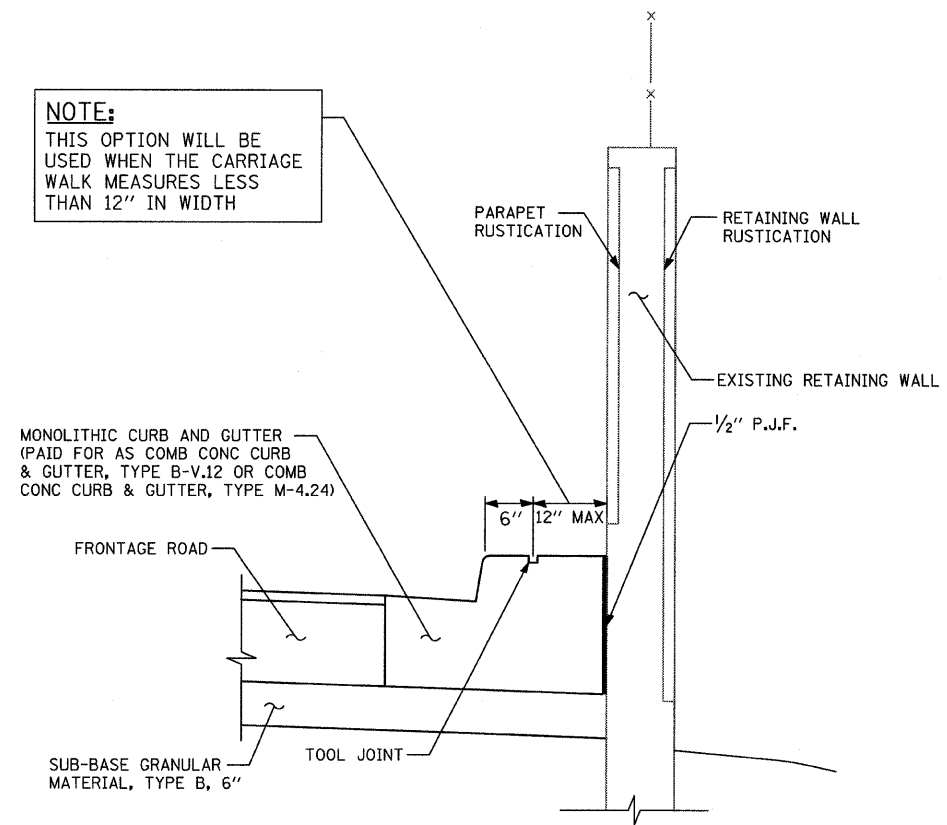


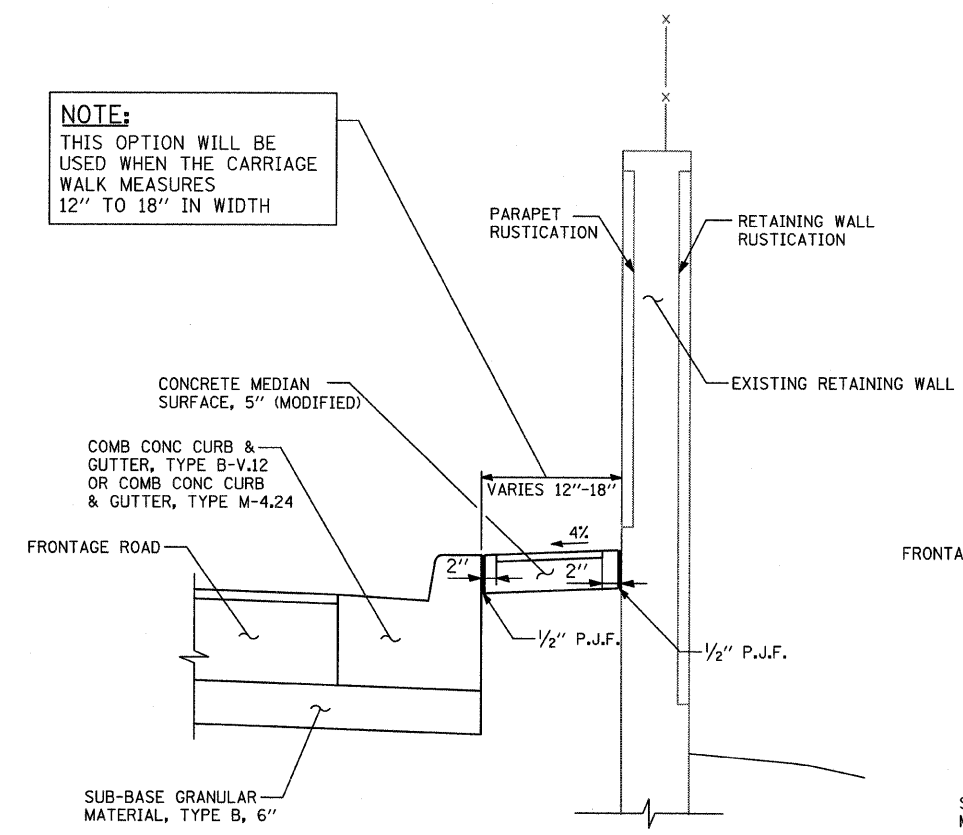
F.A.I. RTE.	SECTION	COUNTY	TOTAL SHEETS	SHEET NO.
94	2005-070 LS	COOK	65	56
STA. 1308+46 (SB 1-94)		2316+90 (NB 1-94)		
TO STA. 1318+91 (SB 1-94)		TO STA. 1328+91 (NB 1-94)		
FED. ROAD DIST. NO.	ILLINOIS FED. AID PROJECT		60A76	

NOTE:
THIS OPTION WILL BE USED WHEN THE CARRIAGE WALK MEASURES LESS THAN 12" IN WIDTH



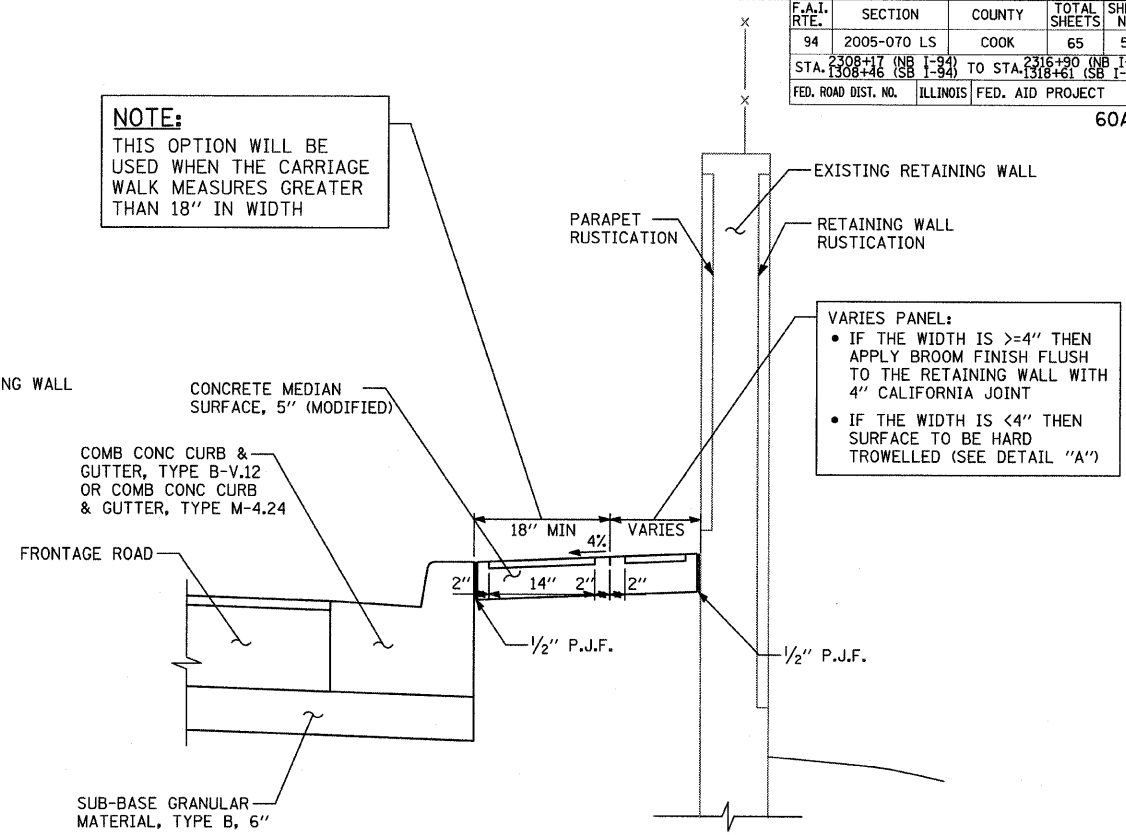
SECTION - CARRIAGE WALK "A"
AREA <12" WIDE

NOTE:
THIS OPTION WILL BE USED WHEN THE CARRIAGE WALK MEASURES 12" TO 18" IN WIDTH



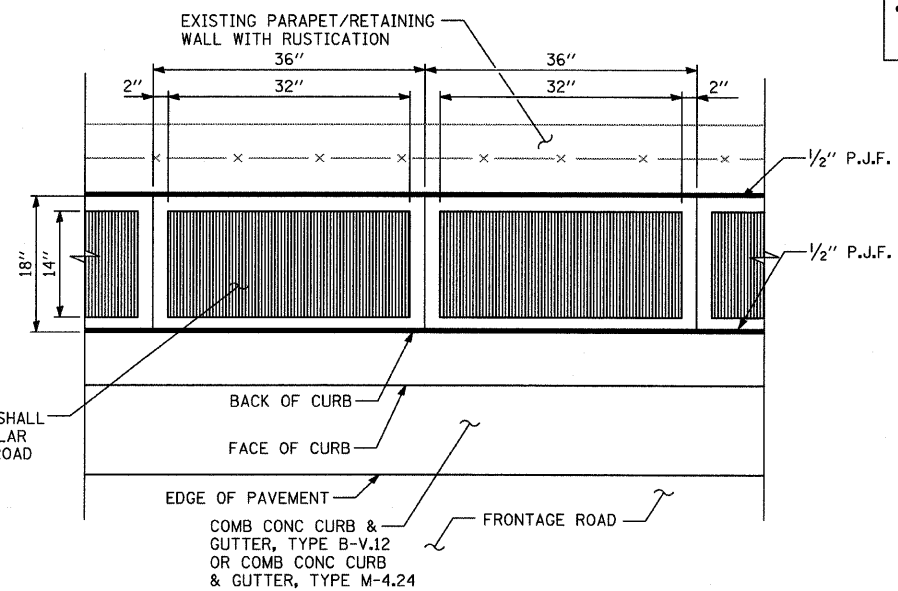
SECTION - CARRIAGE WALK "B"
AREA 12" TO 18" WIDE

NOTE:
THIS OPTION WILL BE USED WHEN THE CARRIAGE WALK MEASURES GREATER THAN 18" IN WIDTH



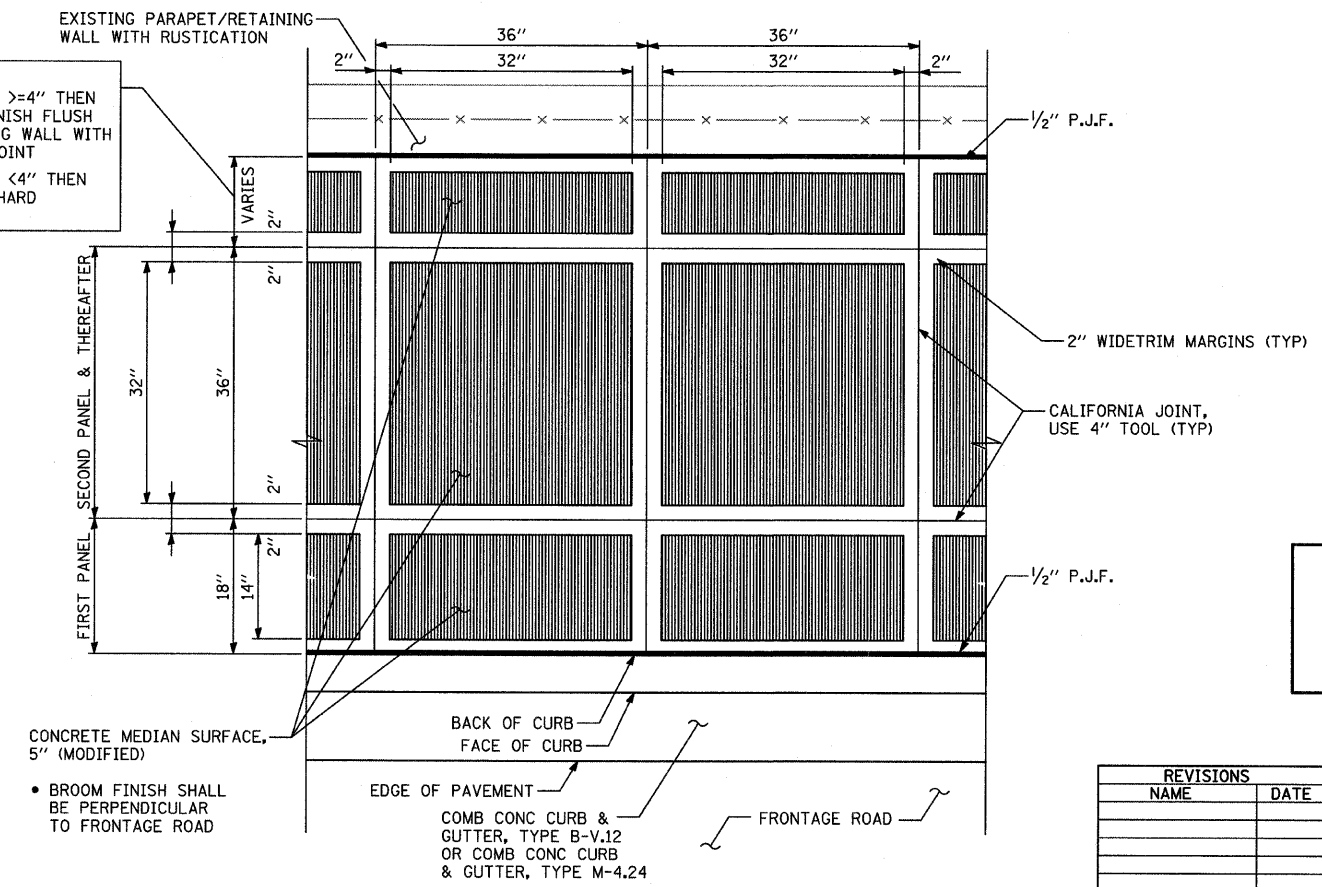
SECTION - CARRIAGE WALK "C"
AREA >18" WIDE

VARIES PANEL:
• IF THE WIDTH IS >=4" THEN APPLY BROOM FINISH FLUSH TO THE RETAINING WALL WITH 4" CALIFORNIA JOINT
• IF THE WIDTH IS <4" THEN SURFACE TO BE HARD TROWELLED (SEE DETAIL "A")



PLAN DETAIL "B": COORDINATE WITH CARRIAGE WALK "B"
CALIFORNIA FINISH

VARIES PANEL:
• IF THE WIDTH IS >=4" THEN APPLY BROOM FINISH FLUSH TO THE RETAINING WALL WITH 4" CALIFORNIA JOINT
• IF THE WIDTH IS <4" THEN SURFACE TO BE HARD TROWELLED



PLAN DETAIL "A": COORDINATE WITH CARRIAGE WALK "C"
CALIFORNIA FINISH

NOTE:
NOT ALL ITEMS SHOWN IN THIS DETAIL ARE PROPOSED. SEE PLANS FOR PROPOSED ITEMS.

TYLIN INTERNATIONAL

REVISIONS	NAME	DATE

ILLINOIS DEPARTMENT OF TRANSPORTATION
F.A.I. 94 (DAN RYAN EXPRESSWAY)
CONCRETE MEDIAN SURFACE, 5" (MODIFIED) WITH CALIFORNIA FINISH DETAIL
SCALE: NONE
DATE: MAY 1, 2008
DRAWN BY: MPG
CHECKED BY: JPM

4/29/2008 6:56:09 PM