

### INDEX OF SHEETS

SHEET	DESCRIPTION
1	COVER SHEET AND INDEX OF SHEETS
2	GENERAL NOTES AND PROJECT COMMITMENTS
3	SUMMARY OF QUANTITIES
4-14	ALIGNMENT PLANS, SURVEY TIES AND CONTROL POINTS
15-16	ROADWAY REMOVAL PLANS
17-18	PROPOSED ROADWAY PLANS
19-20	EROSION CONTROL PLANS
21-22	WATER SERVICE LINE PLANS
23	PLANTING SCHEDULES
24-25	LANDSCAPING PLANS
26-27	LANDSCAPING LAYOUT PLANS
28-29	IRRIGATION PLANS
30	LANDSCAPING DETAILS
31-35	CONSTRUCTION DETAILS
36-39	DISTRICT 1 DETAILS

### IDOT HIGHWAY STANDARDS

STANDARD	DESCRIPTION
000001	STANDARD SYMBOLS ABBREVIATIONS AND PATTERNS
001006	DECIMAL OF AN INCH AND OF A FOOT
442201	CLASS C AND D PATCHES
701101	OFF-RD OPERATIONS, MULTILANE, 15' TO 24" FROM PAVEMENT EDGE
701601	URBAN LANE CLOSURE, MULTILANE, 1W OR 2W WITH NON TRAVERSABLE MEDIAN
701701	URBAN LANE CLOSURE, MULTILANE INTERSECTION
701801	LANE CLOSURE MULTI LANE 1W OR 2W CROSSWALK OR SIDEWALK CLOSURE
701901	TRAFFIC CONTROL DEVICES

### DESIGN NUMBER

**D-91-107-06**

**PROJECT LOCATED IN CITY OF CHICAGO**

### DESIGN DESIGNATION

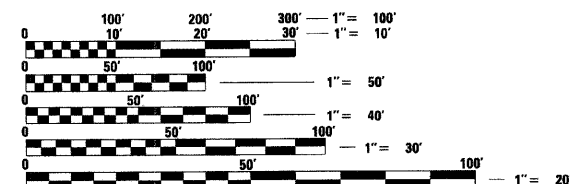
WENTWORTH AVE: 6259 (20) URBAN COLLECTOR  
 WELLS ST: 8275 (20) URBAN COLLECTOR  
 NB LOCAL LANES: 8568 (35) URBAN INTERSTATE 264.46 (CRC-30)  
 SB LOCAL LANES: 6042 (35) URBAN INTERSTATE 264.46 (CRC-30)

	ADT (2020)	DESIGN SPEED	POSTED SPEED
--	------------	--------------	--------------

I-90/94:			
NB LOCAL LANES	71,230	60	45
SB LOCAL LANES	71,715	60	45

RAMPS:			
RAMP 63A	9,050	40	30
RAMP 63B	12,690	40	30

FRONTAGE ROADS:			
WENTWORTH AVE	11,000	30	25
WELLS ST	15,000	30	25



FULL SIZE PLANS HAVE BEEN PREPARED USING STANDARD ENGINEERING SCALES. REDUCED SIZED PLANS WILL NOT CONFORM TO STANDARD SCALES. IN MAKING MEASUREMENTS ON REDUCED PLANS, THE ABOVE SCALES MAY BE USED.

BEFORE EXCAVATING CALL:  
 CHICAGO UTILITY ALERT NETWORK  
 (312) 744-7000

**CONTRACT NO. 60A77**

# STATE OF ILLINOIS

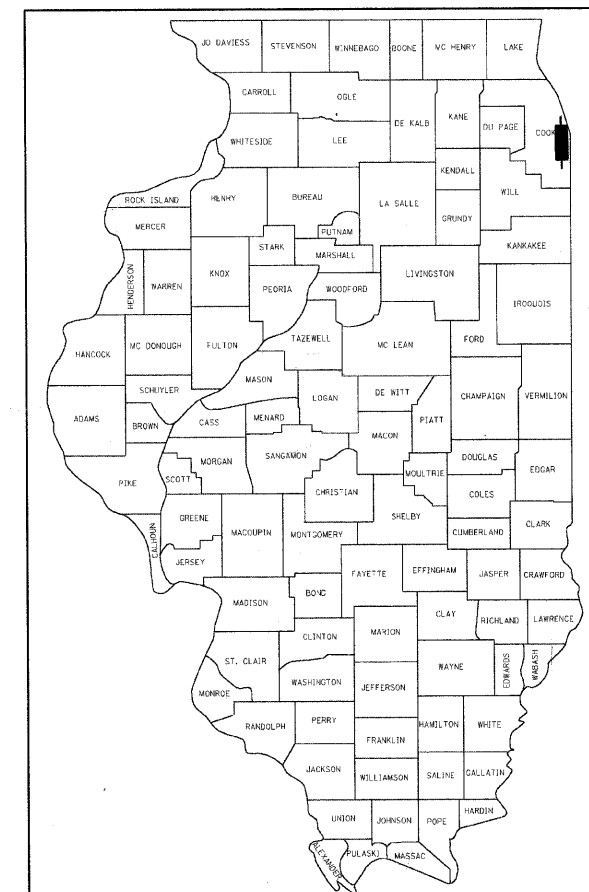
## DEPARTMENT OF TRANSPORTATION

### DIVISION OF HIGHWAYS

# PLANS FOR PROPOSED FEDERAL AID HIGHWAY

**F.A.I. ROUTE 90/94 (DAN RYAN EXPRESSWAY)  
SECTION 2005-071 LS**

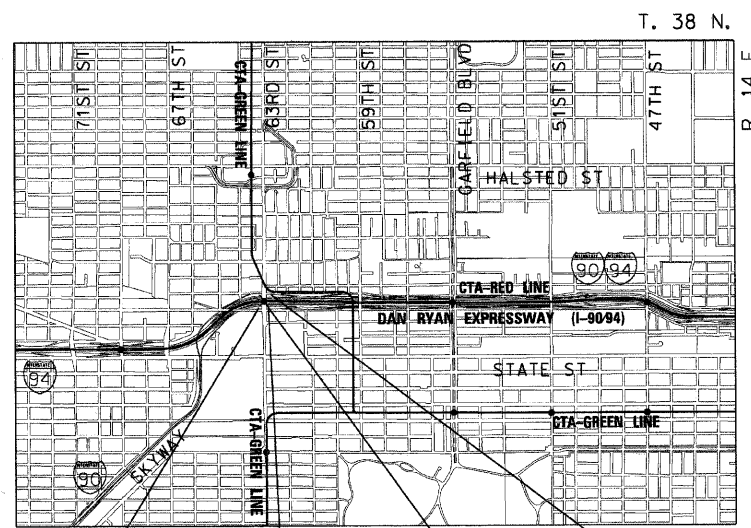
**GATEWAY LANDSCAPING AND IRRIGATION  
AT 63RD STREET  
COOK COUNTY  
C-91-107-06**



LOCATION OF SECTION INDICATED THUS: - [black rectangle] -

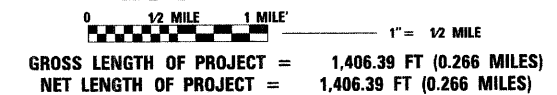


SIGNATURE *Robert M. Covey*  
 DATE 5/2/08  
 EXPIRES 11/24/09



PROJECT BEGINS NB LOCAL LANES STA 4418 + 85.26	PROJECT ENDS NB LOCAL LANES STA 4425 + 69.85	PROJECT BEGINS SB LOCAL LANES STA 3418 + 77.83	PROJECT ENDS SB LOCAL LANES STA 3425 + 99.63
--	--	--	--

### LOCATION MAP



STATE OF ILLINOIS  
 DEPARTMENT OF TRANSPORTATION  
 DIVISION OF HIGHWAYS

SUBMITTED APRIL 30, 2008

*Deane M. O'Keefe*  
 DEPUTY DIRECTOR OF HIGHWAYS, REGION ENGINEER

June 27, 2008  
*Eric F. Harms*  
 ENGINEER OF DESIGN AND ENVIRONMENT

June 27, 2008  
*Christine M. Reed*  
 DIRECTOR OF HIGHWAYS, CHIEF ENGINEER



**PRINTED BY THE AUTHORITY  
OF THE STATE OF ILLINOIS**

DISTRICT ONE DESIGN/CONSULTANT SERVICES PROJECT MANAGER  
 RAJENDRA SHAH (847) 705-4555