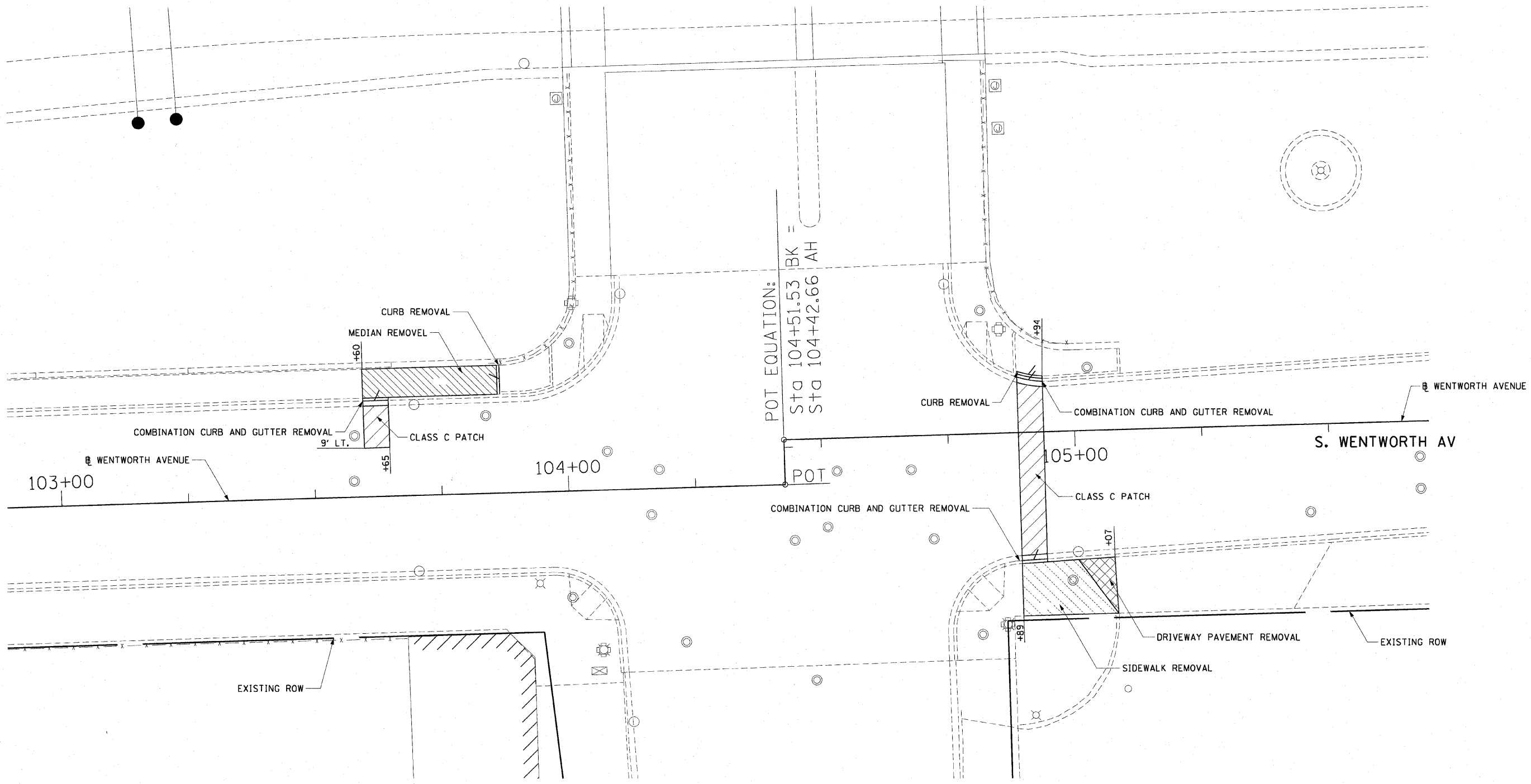
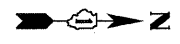


W. 63rd ST

NORTHBOUND DAN RYAN LOCAL LANES



NOTES:

1. THE REMOVAL LIMIT STATIONS ARE APPROXIMATE AND SHALL BE VERIFIED WITH THE LOCATION OF THE WATER SERVICE LINES.

W. 63rd ST

LEGEND:

- PAVEMENT REMOVAL FOR CLASS C PATCH
- MEDIAN REMOVAL
- LINEAR REMOVALS
- SIDEWALK REMOVAL
- DRIVEWAY PAVEMENT REMOVAL



REVISIONS	
NAME	DATE

ILLINOIS DEPARTMENT OF TRANSPORTATION
 F.A.I. 90/94 (DAN RYAN EXPRESSWAY)
 63RD STREET GATEWAY LANDSCAPING AND IRRIGATION
 ROADWAY REMOVAL PLANS

SCALE: 1"=10'
 DATE: MAY 02, 2008
 DRAWN BY: RMG
 CHECKED BY: JAL



P:\040466\civil\29-gateway\Jr\1\gallon\shf\22f_163rd\w_63rd\631201.dwg