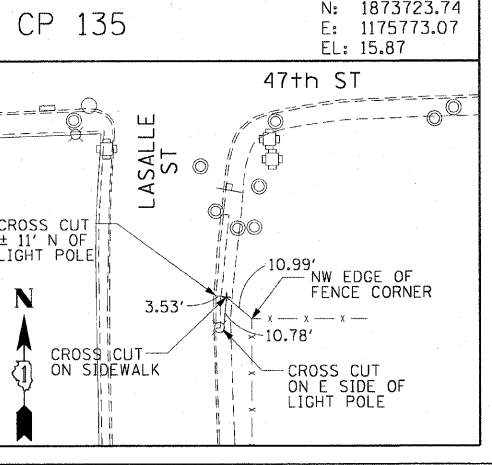
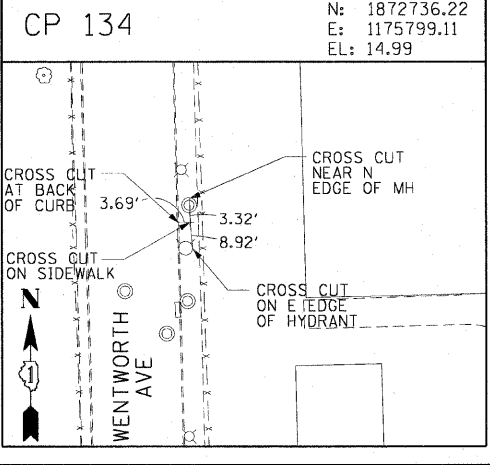
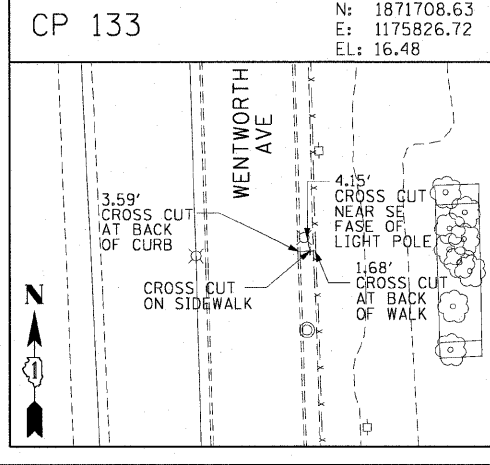
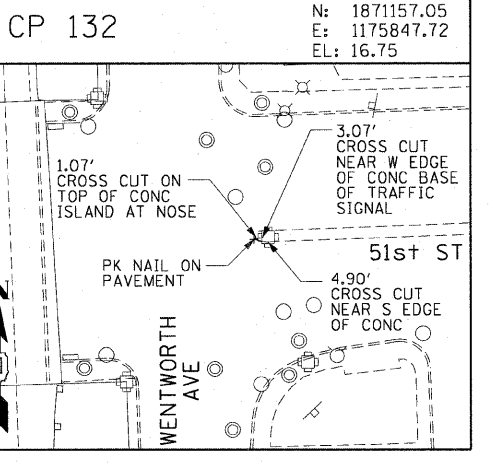
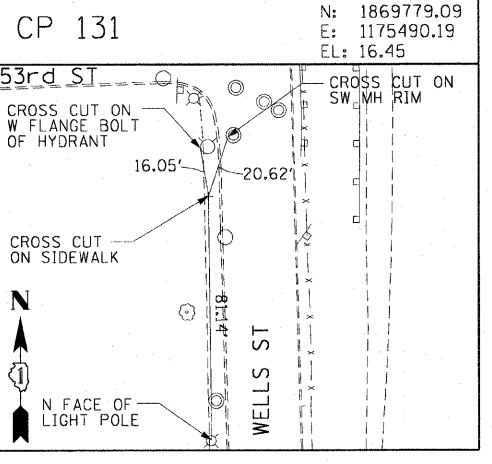
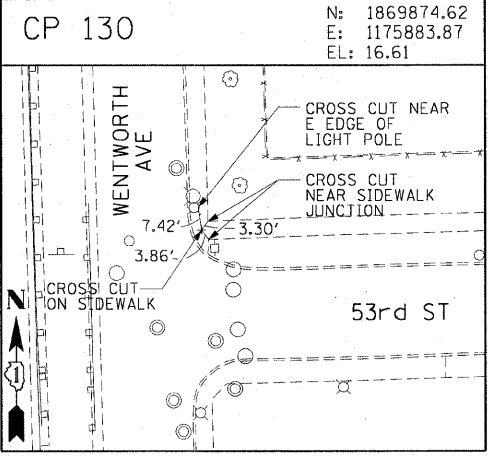
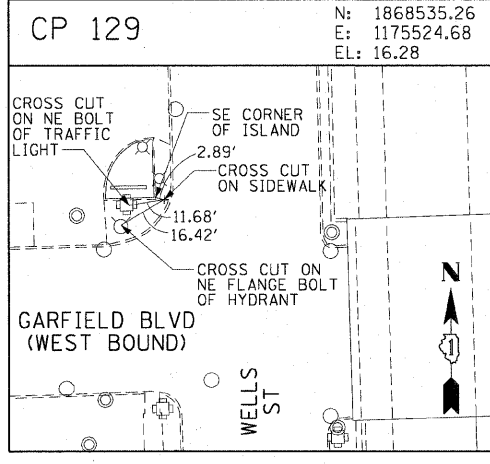
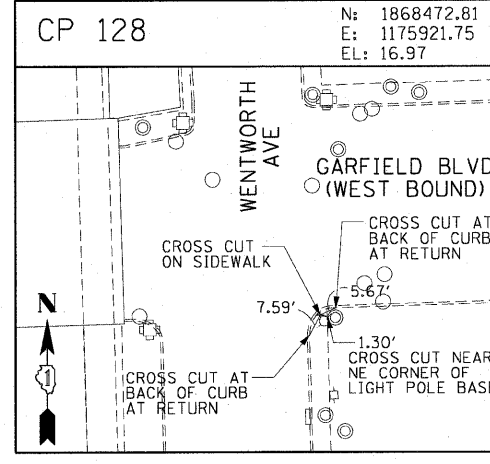
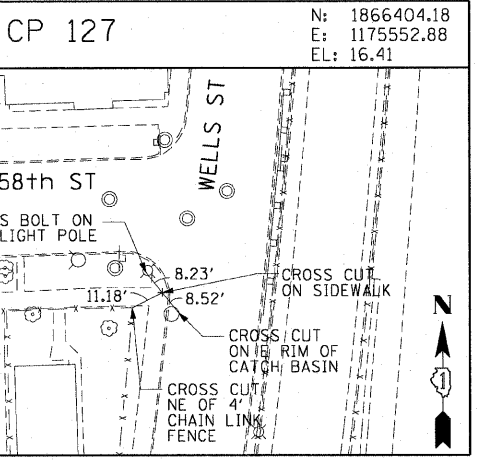
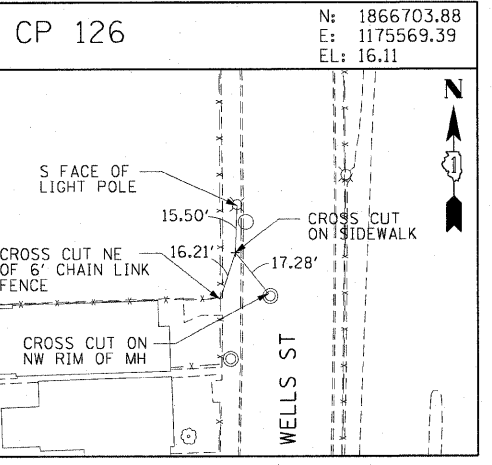
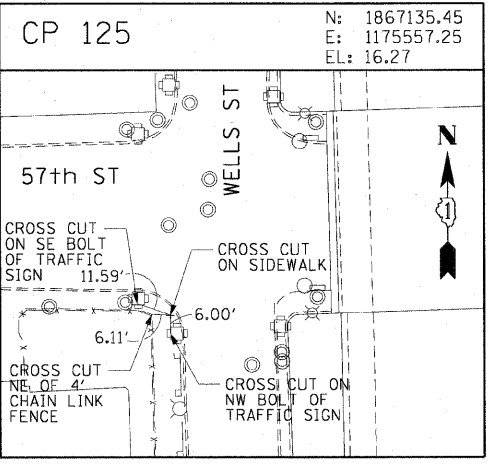
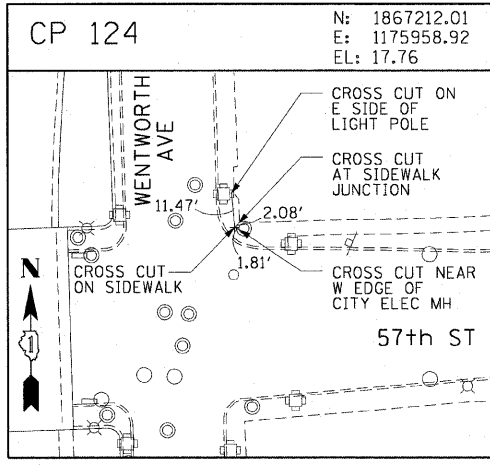
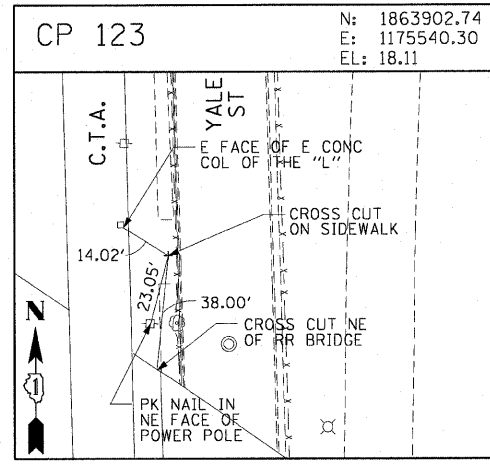
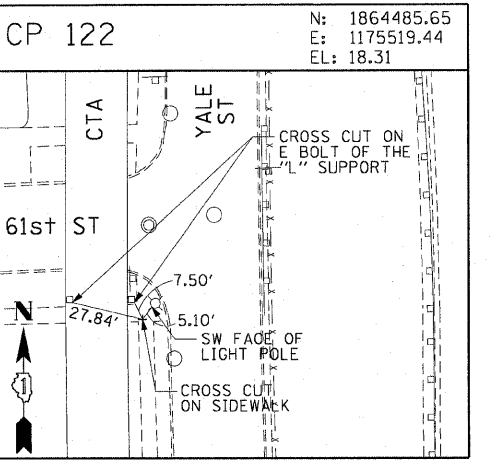
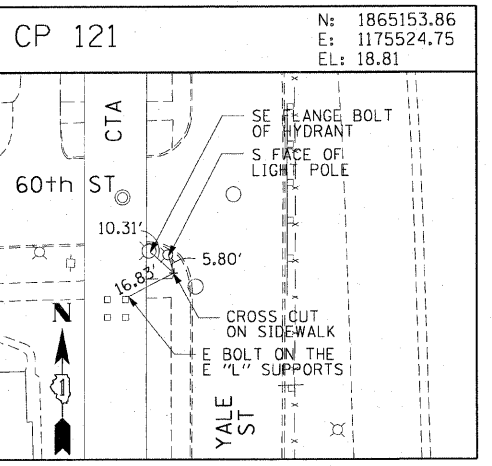
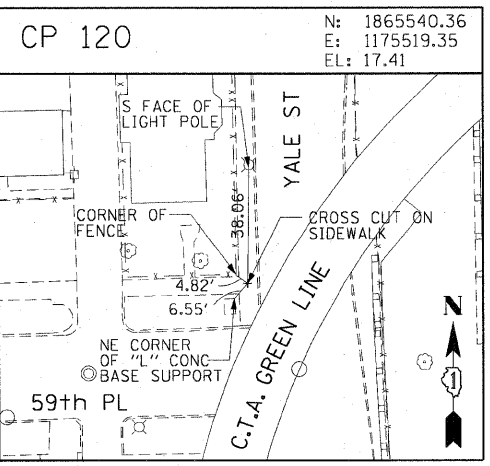
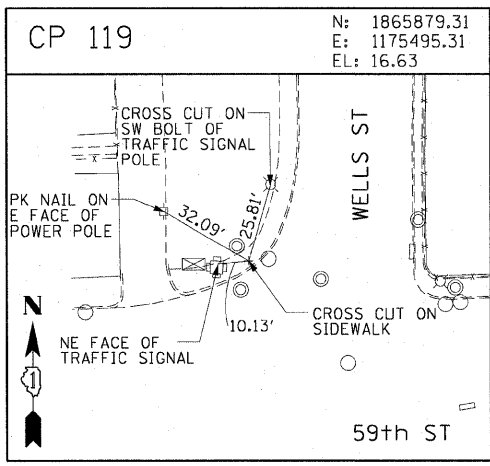
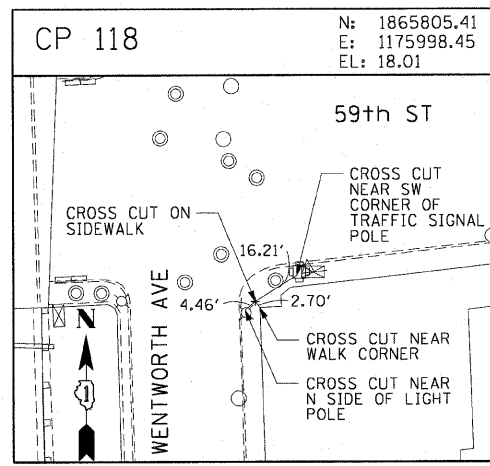


F.A.I. RTE.	SECTION	COUNTY	TOTAL SHEETS	SHEET NO.
90/94	2005-072 LS	COOK	38	12
STA.		TO STA.		
FED. ROAD DIST. NO. 1		ILLINOIS FED. AID PROJECT		
60A78				



CTE | AECOM

REVISIONS	
NAME	DATE

ILLINOIS DEPARTMENT OF TRANSPORTATION
F.A.I. 90/94 (DAN RYAN EXPRESSWAY)
47TH STREET GATEWAY LANDSCAPING AND IRRIGATION
SURVEY TIES AND CONTROL POINTS

SCALE: 1"=30'
DATE: MAY 02, 2008

DRAWN BY: MRK
CHECKED BY: JAL

P:\040466\civil\29-gateway_1\rrigation_sht22g_147\h\al22g0220.sht 05/01/2008 04:09:35 PM