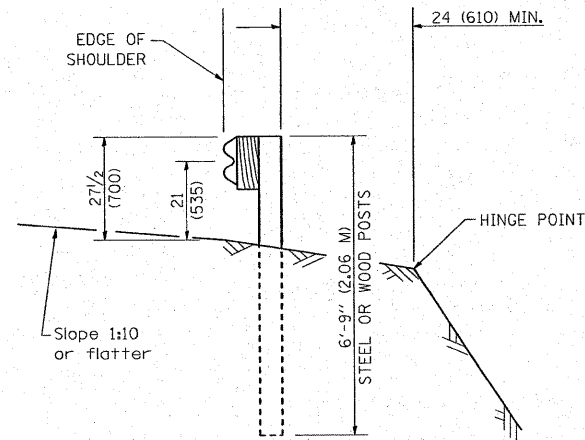


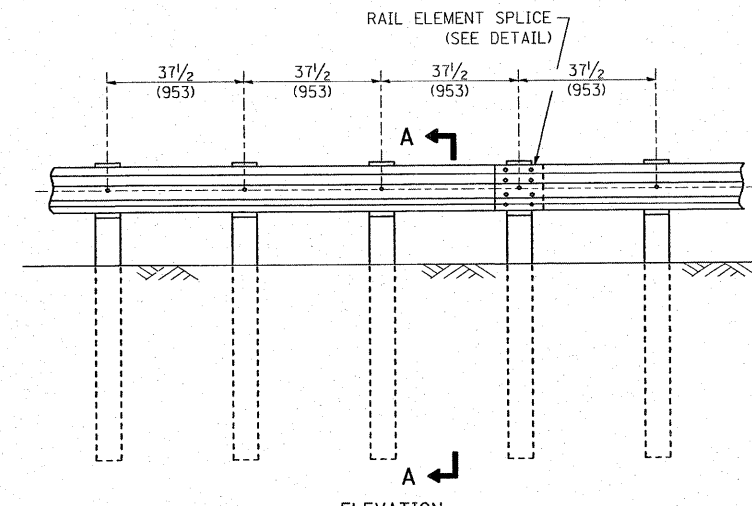
ELEVATION

**TYPE A**

6'-3" (1.905 M) TYPICAL POST SPACING



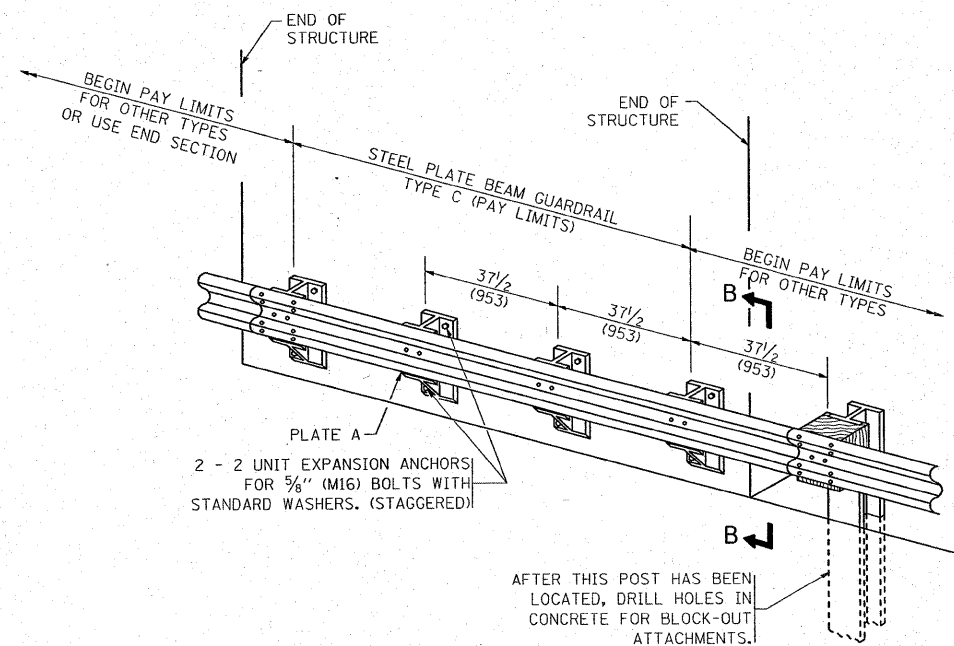
**SECTION A-A**



ELEVATION

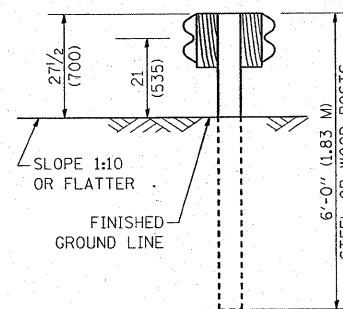
**TYPE A**

37 1/2 (953) CLOSED POST SPACING

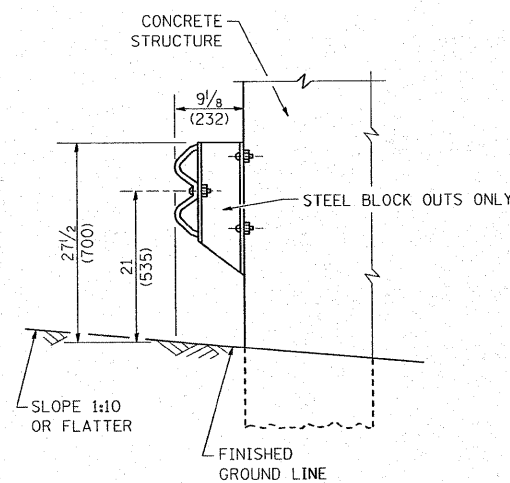


**TYPE C**

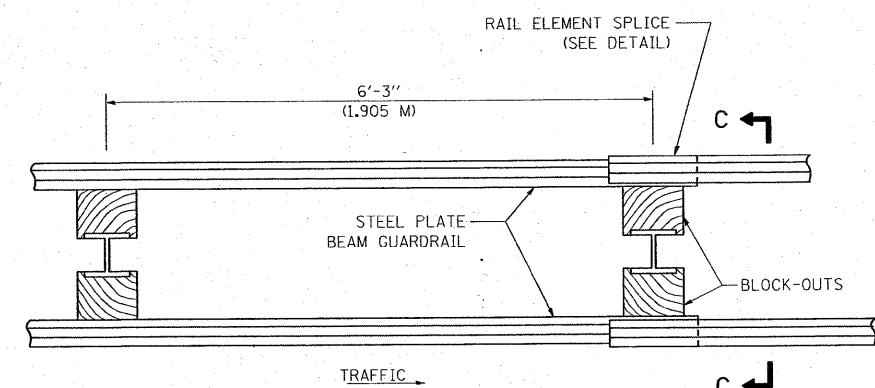
37 1/2 (953) BLOCK-OUT SPACING



**SECTION C-C**



**SECTION B-B**



TRAFFIC

PLAN

**TYPE D**

DOUBLE STEEL PLATE BEAM GUARDRAIL  
6'-3" (1.905 M) TYPICAL POST SPACING

**GENERAL NOTES**

ALL SLOPE RATIOS ARE EXPRESSED AS UNITS OF VERTICAL DISPLACEMENT TO UNITS OF HORIZONTAL DISPLACEMENT (V:H).

ALL DIMENSIONS ARE IN INCHES (MILLIMETERS) UNLESS OTHERWISE SHOWN.

THE EXISTING STEEL POSTS MAY BE DRILLED TO MATCH THE BOLT PATTERN SHOWN HEREIN FOR THE WOOD BLOCK-OUT, OR A NEW STEEL POST SHALL BE PROVIDED.

THIS DETAIL IS APPLICABLE TO THE GUARDRAIL SYSTEM USED PRIOR TO JANUARY 1, 2007. FOR DETAILS ON THE MIDWEST GUARDRAIL SYSTEM, SEE STANDARD 630001.

FILE NAME =	USER NAME = galbannb	DESIGNED -	REVISED - 10-31-06	<b>STATE OF ILLINOIS DEPARTMENT OF TRANSPORTATION</b>	<b>REMOVE AND REERECT STEEL PLATE BEAM GUARDRAIL</b>	F.A.P. RTE.	SECTION	COUNTY	TOTAL SHEETS	SHEET NO.
\\dist\ntfs2\users\galbannb\Desktop\bm2.dgn	DRAWN -	REVISED -	330			104 T-3	WILL	32	23	
PLOT SCALE = 58.0000' / IN.	CHECKED -	REVISED -	<b>BM-21</b>			CONTRACT NO. 60B09				
PLOT DATE = 12/27/2007	DATE -	REVISED -	FED. ROAD DIST. NO. 1 ILLINOIS FED. AID PROJECT							
				SCALE: NONE		SHEET NO. 1 OF 4 SHEETS		STA. TO STA.		