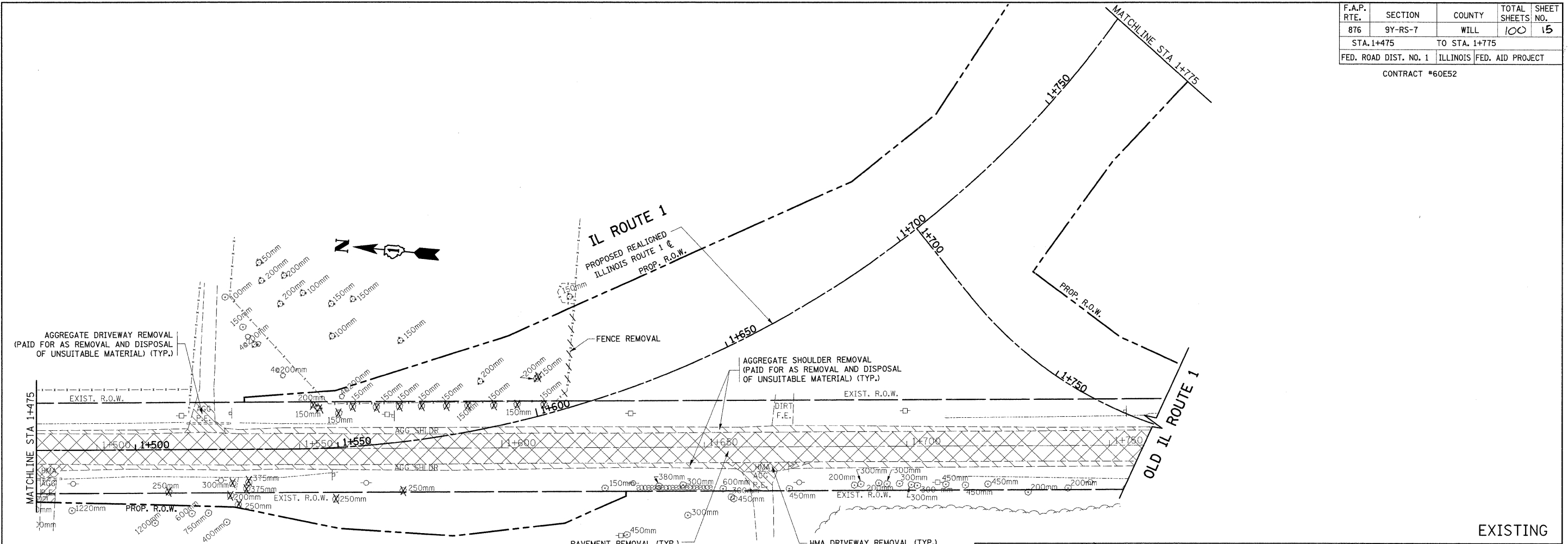
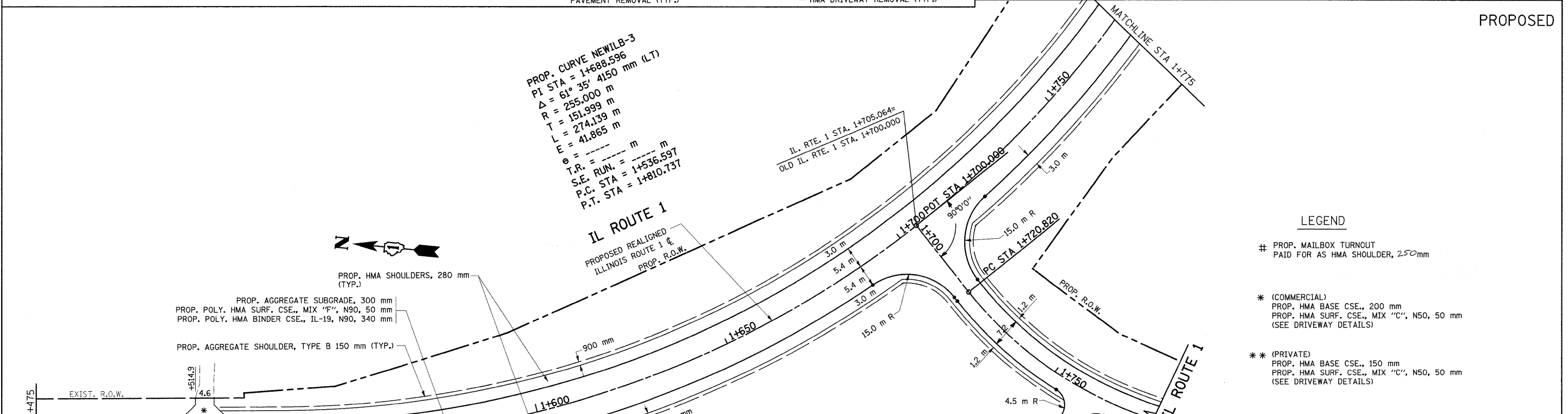


F.A.P. RTE.	SECTION	COUNTY	TOTAL SHEETS	SHEET NO.
876	9Y-RS-7	WILL	100	15
STA. 1+475 TO STA. 1+775				
FED. ROAD DIST. NO. 1		ILLINOIS FED. AID PROJECT		

CONTRACT #60E52



EXISTING
PROPOSED



- LEGEND**
- # PROP. MAILBOX TURNOUT
PAID FOR AS HMA SHOULDER, 250mm
 - * (COMMERCIAL)
PROP. HMA BASE CSE., 200 mm
PROP. HMA SURF. CSE., MIX "C", N50, 50 mm
(SEE DRIVEWAY DETAILS)
 - ** (PRIVATE)
PROP. HMA BASE CSE., 150 mm
PROP. HMA SURF. CSE., MIX "C", N50, 50 mm
(SEE DRIVEWAY DETAILS)

REVISIONS	
NAME	DATE

ILLINOIS DEPARTMENT OF TRANSPORTATION
**IL. ROUTE 1
EXISTING AND PROPOSED
ROADWAY PLAN**

SCALE 1:500
DATE 8/28/2008

DRAWN BY
CHECKED BY