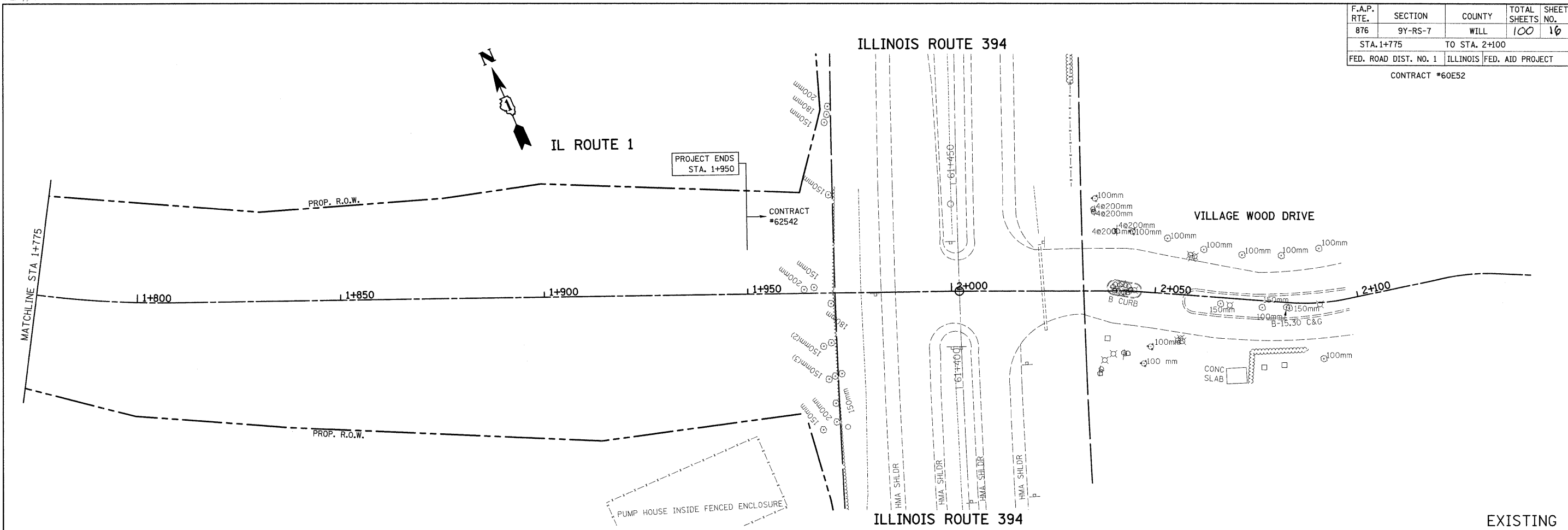
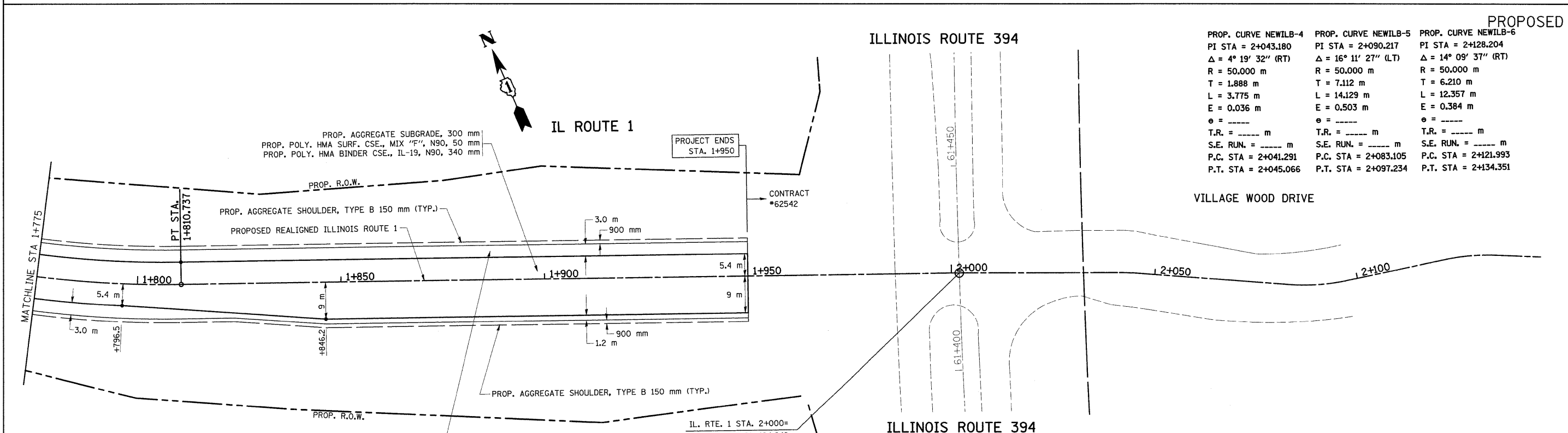


F.A.P. RTE.	SECTION	COUNTY	TOTAL SHEETS	SHEET NO.
876	9Y-RS-7	WILL	100	16
STA. 1+775 TO STA. 2+100				
FED. ROAD DIST. NO. 1		ILLINOIS FED. AID PROJECT		

CONTRACT #60E52



EXISTING



PROPOSED

PROP. CURVE NEWILB-4	PROP. CURVE NEWILB-5	PROP. CURVE NEWILB-6
PI STA = 2+043.180	PI STA = 2+090.217	PI STA = 2+128.204
$\Delta = 4^\circ 19' 32''$ (RT)	$\Delta = 16^\circ 11' 27''$ (LT)	$\Delta = 14^\circ 09' 37''$ (RT)
R = 50,000 m	R = 50,000 m	R = 50,000 m
T = 1.888 m	T = 7.112 m	T = 6.210 m
L = 3.775 m	L = 14.129 m	L = 12.357 m
E = 0.036 m	E = 0.503 m	E = 0.384 m
e = -----	e = -----	e = -----
T.R. = ----- m	T.R. = ----- m	T.R. = ----- m
S.E. RUN. = ----- m	S.E. RUN. = ----- m	S.E. RUN. = ----- m
P.C. STA = 2+041.291	P.C. STA = 2+083.105	P.C. STA = 2+121.993
P.T. STA = 2+045.066	P.T. STA = 2+097.234	P.T. STA = 2+134.351

REVISIONS	
NAME	DATE

ILLINOIS DEPARTMENT OF TRANSPORTATION
**IL. ROUTE 1
EXISTING AND PROPOSED
ROADWAY PLAN**
SCALE 1:500
DATE 8/28/2008
DRAWN BY
CHECKED BY