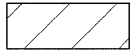
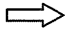
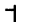
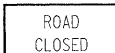

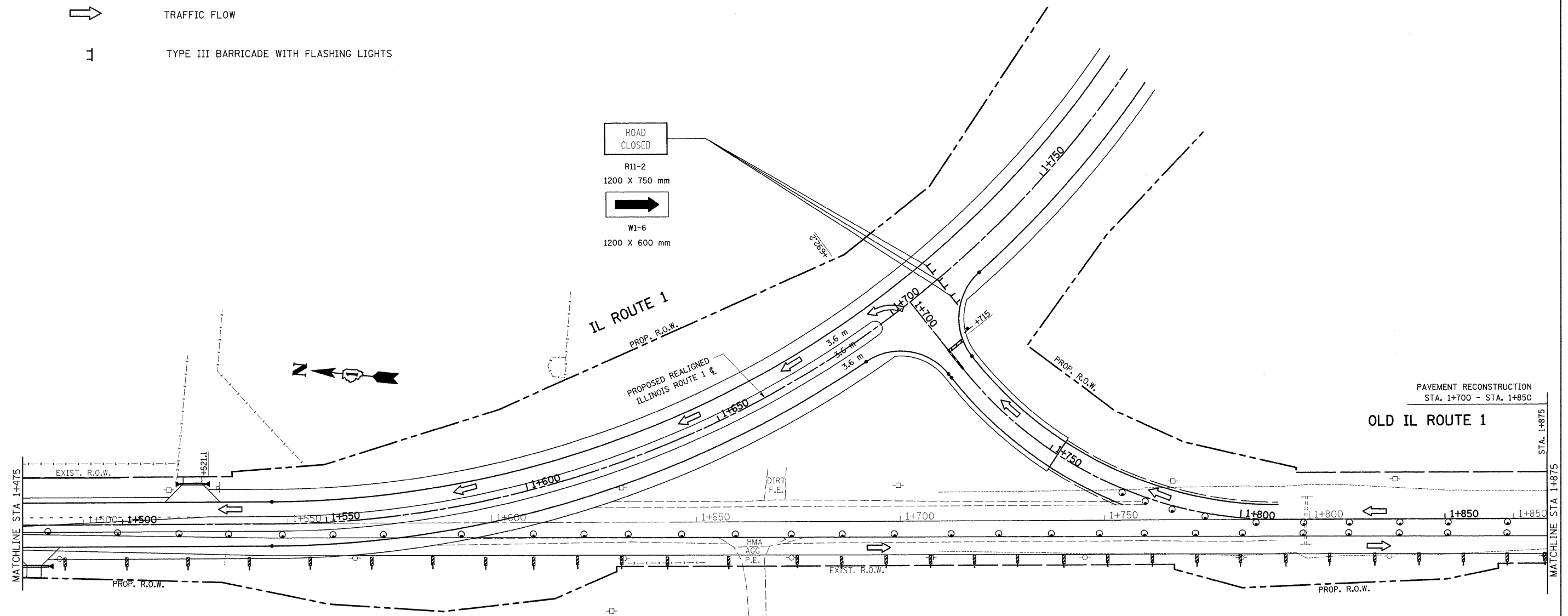


F.A.P. RTE.	SECTION	COUNTY	TOTAL SHEETS	SHEET NO.
876	9Y-RS-7	WILL	100	20
STA. 1+475		TO STA. 1+875		
FED. ROAD DIST. NO. 1		ILLINOIS FED. AID PROJECT		
CONTRACT NO. 60E52				

LEGEND

-  WORK ZONE
-  TRAFFIC FLOW
-  TYPE III BARRICADE WITH FLASHING LIGHTS

-  ROAD CLOSED
- R11-2
1200 X 750 mm
-  W1-6
1200 X 600 mm



REVISIONS	
NAME	DATE

ILLINOIS DEPARTMENT OF TRANSPORTATION
SUGGESTED MAINTENANCE OF TRAFFIC
IL. 1
STAGE II

SCALE 1:500
 DATE 9/3/2008

DRAWN BY
 CHECKED BY