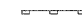




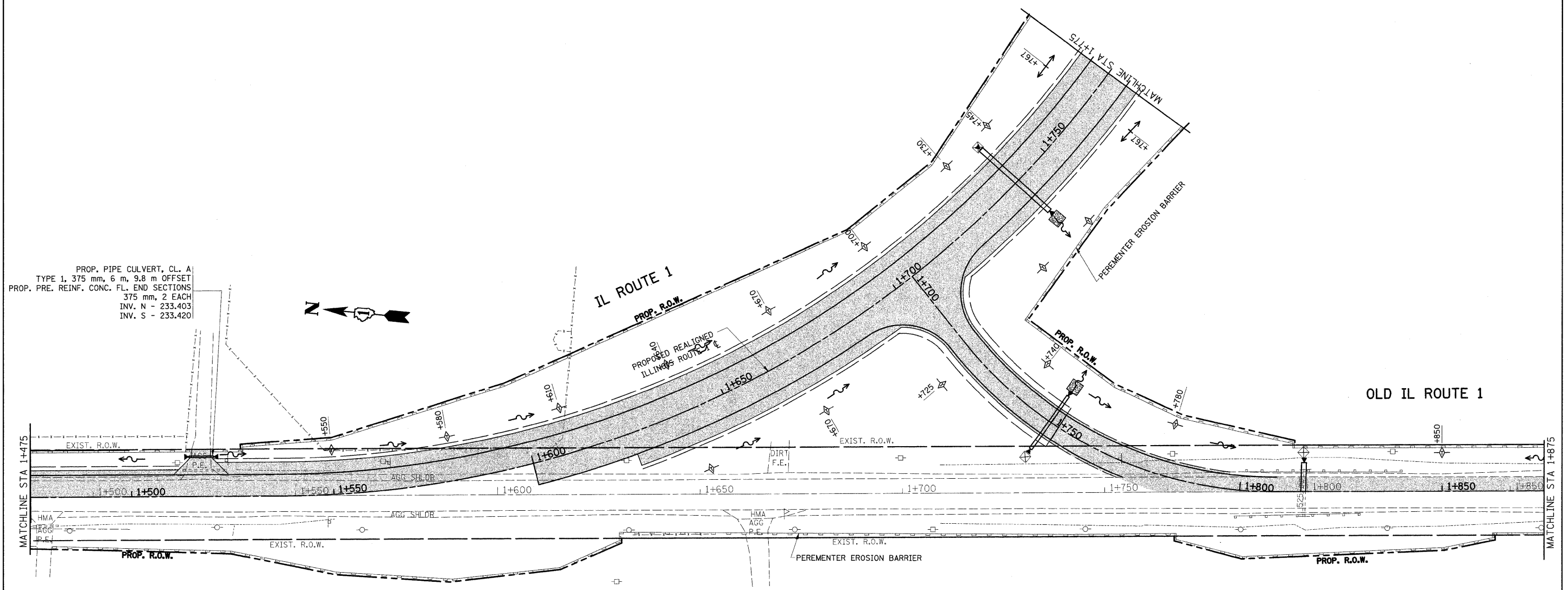


F.A.P. RTE.	SECTION	COUNTY	TOTAL SHEETS	SHEET NO.
876	9Y-RS-7	WILL	100	34
STA. 1+475		TO STA. 1+875		
FED. ROAD DIST. NO. 1		ILLINOIS FED. AID PROJECT		
CONTRACT NO. 60E52				

**LEGEND**

-  PERIMETER EROSION CONTROL
-  TEMPORARY DITCH CHECKS, URETHANE FORM
-  SEDIMENT CONTROL DRAINAGE  
STRUCTURE INLET FILTER CLEANING
-  INLET FILTERS
-  PAVEMENT TO BE CONSTRUCTED



PROP. PIPE CULVERT, CL. A  
 TYPE 1, 375 mm, 6 m, 9.8 m OFFSET  
 PROP. PRE. REINF. CONC. FL. END SECTIONS  
 375 mm, 2 EACH  
 INV. N - 233.403  
 INV. S - 233.420



REVISIONS		ILLINOIS DEPARTMENT OF TRANSPORTATION EROSION CONTROL PLAN IL. 1 STAGE I
NAME	DATE	
		SCALE 1:500 DATE 9/23/2008 DRAWN BY CHECKED BY