

V3 Companies
 7325 Janes Avenue
 Woodridge, IL 60517
 630.724.9200 phone
 630.724.9202 fax
 www.v3co.com



FOR INDEX OF SHEETS, SEE SHEET NO. 2

STATE OF ILLINOIS
 DEPARTMENT OF TRANSPORTATION
 DIVISION OF HIGHWAYS
**PROPOSED
 HIGHWAY PLANS**

FAP ROUTE 324 (ILLINOIS ROUTE 23)
 BEAM AND BEARING FABRICATION

SECTION: 23B (1&2)F
 PROJECT NO.: BRF-0324(018)

MCHENRY COUNTY
 C-91-467-08

PROJECT LOCATED IN:
 CITY OF MARENGO

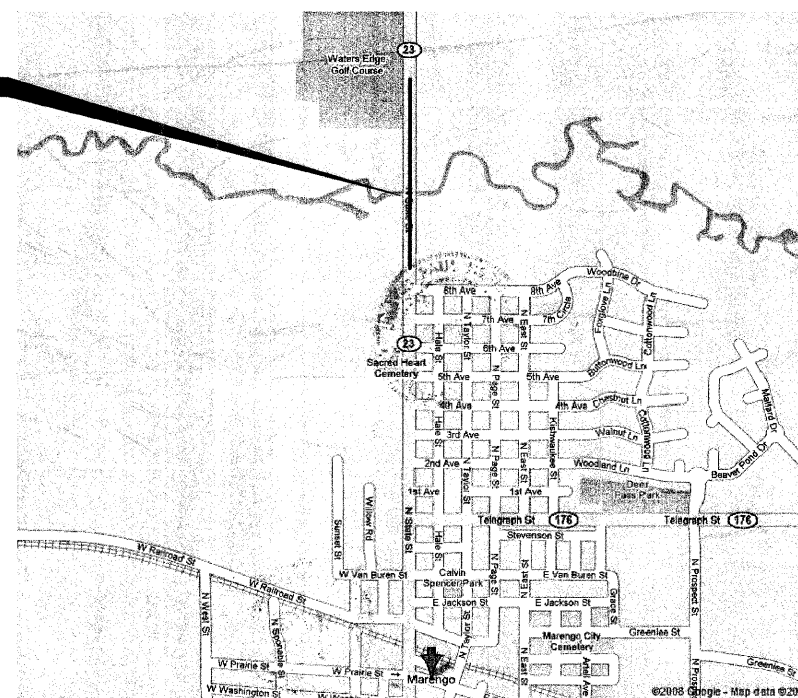
F.A.P. RTE.	SECTION	COUNTY	TOTAL SHEETS	SHEET NO.
324	23B (1&2)F	MCHENRY	17	1
FED. ROAD DIST. NO.		ILLINOIS	CONTRACT NO. 60E54	

D-91-087-05



LOCATION OF SECTION INDICATED THUS: - ■ -

IL 23 OVER KISHWAUKEE RIVER
 S. N. 056-0010



R 5 E
 LOCATION MAP



T 44 N



July 3, 2008
 David Heslinga

DAVID P. HESLINGA
 ILLINOIS REGISTERED PROFESSIONAL ENGINEER
 NO. 062-036274
 EXPIRATION DATE: 11-30-2008



JULY 03, 2008
 David L. Smoot

DAVID L. SMOOT
 ILLINOIS LICENSED STRUCTURAL ENGINEER
 NO. 081-005861
 EXPIRATION DATE: 11-30-2007

STATE OF ILLINOIS
 DEPARTMENT OF TRANSPORTATION
 DIVISION OF HIGHWAYS

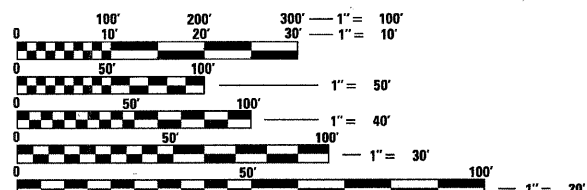
SUBMITTED July 9, 2008

Diana M. D'Krafer DISTRICT ENGINEER

August 15, 2008
Eric E. Harnett ENGINEER OF DESIGN AND ENVIRONMENT

August 15, 2008
Christine M. Reed DIRECTOR OF HIGHWAYS, CHIEF ENGINEER

**PRINTED BY THE AUTHORITY
 OF THE STATE OF ILLINOIS**



FULL SIZE PLANS HAVE BEEN PREPARED USING STANDARD ENGINEERING SCALES. REDUCED SIZED PLANS WILL NOT CONFORM TO STANDARD SCALES. IN MAKING MEASUREMENTS ON REDUCED PLANS, THE ABOVE SCALES MAY BE USED.

J.U.I.E.
 JOINT UTILITY LOCATION INFORMATION FOR EXCAVATION
 1-800-892-0123
 OR 811

CONTRACT NO. 60E54

DISTRICT ONE - DESIGN PROJECT MANAGER: ISAAC KWARTENG (847) 705-4230