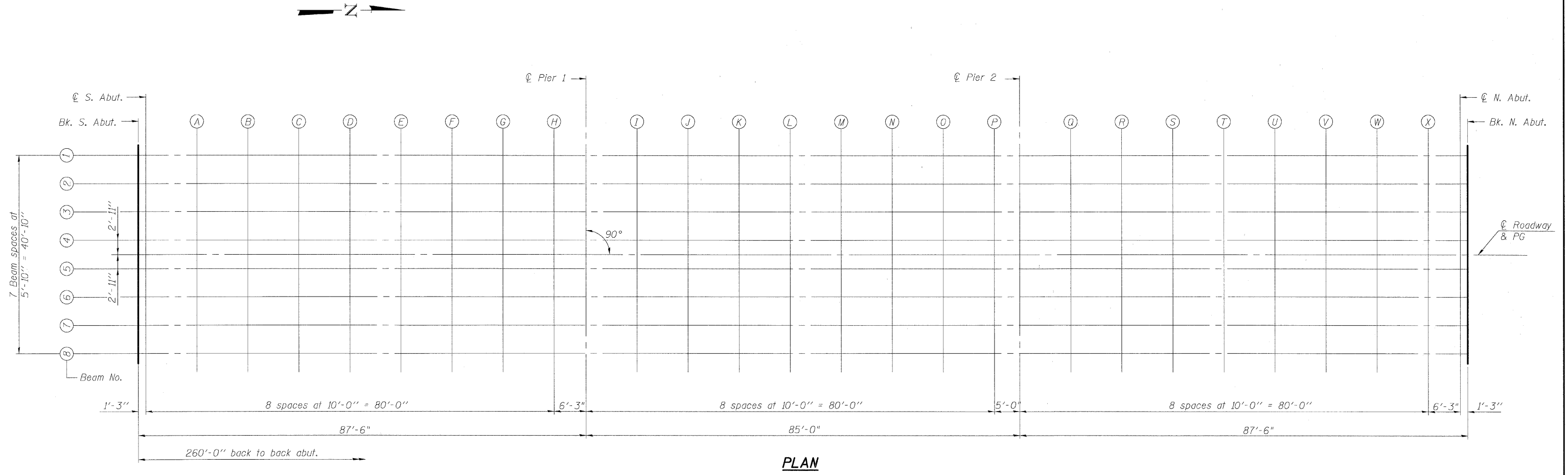


STATE OF ILLINOIS
DEPARTMENT OF TRANSPORTATION

| ROUTE NO. | SECTION | COUNTY | TOTAL SHEETS | SHEET NO. | SHEET NO. |
|-----------------------|------------|------------------|--------------|-----------|-----------|
| F.A.P. 324 | 23B (1&2)F | MCHENRY | 17 | 5 | |
| FED. ROAD DIST. NO. 7 | ILLINOIS | FED. AID PROJECT | | | |

Contract # 60E54



FOR INFORMATION ONLY
NOT PART OF THIS CONTRACT

| | |
|----------|-----|
| DESIGNED | CJB |
| CHECKED | PWO |
| DRAWN | DRP |
| CHECKED | PJM |



V3 Companies of Illinois Ltd.
7325 Janes Avenue
Woodridge, IL 60517
630.724.9200 phone
630.724.9202 fax
www.v3co.com

TOP OF SLAB ELEVATIONS

ILL. ROUTE 23 OVER
KISHWAUKEE RIVER
F.A.P. RT. 324 - SEC. 23B (1&2)F
MCHENRY COUNTY
STATION 69+02.50
STRUCTURE NO. 056-0001