

STATE OF ILLINOIS
DEPARTMENT OF TRANSPORTATION

ROUTE NO.	SECTION	COUNTY	DATE SHEETS	SHEET NO.	SHEET NO.
F.A.P. 324	23B (1&2)F	McHENRY	17	9	
FED. ROAD DIST. NO. 7	ILLINOIS	FED. AID PROJECT-			

Contract # 60E54

WEST CURB LINE

Location	Station	Offset	Theoretical Grade Elevations
End S. Appr. Pav't.	67+42.50	-22.42	804.27
A	67+52.50	-22.42	804.32
B	67+62.50	-22.42	804.37
Bk. S. Abut.	67+72.50	-22.42	804.42

WEST EDGE OF PAVEMENT

Location	Station	Offset	Theoretical Grade Elevations
End S. Appr. Pav't.	67+42.50	-12.00	804.49
A	67+52.50	-12.00	804.54
B	67+62.50	-12.00	804.58
Bk. S. Abut.	67+72.50	-12.00	804.63

CL ROADWAY & PG

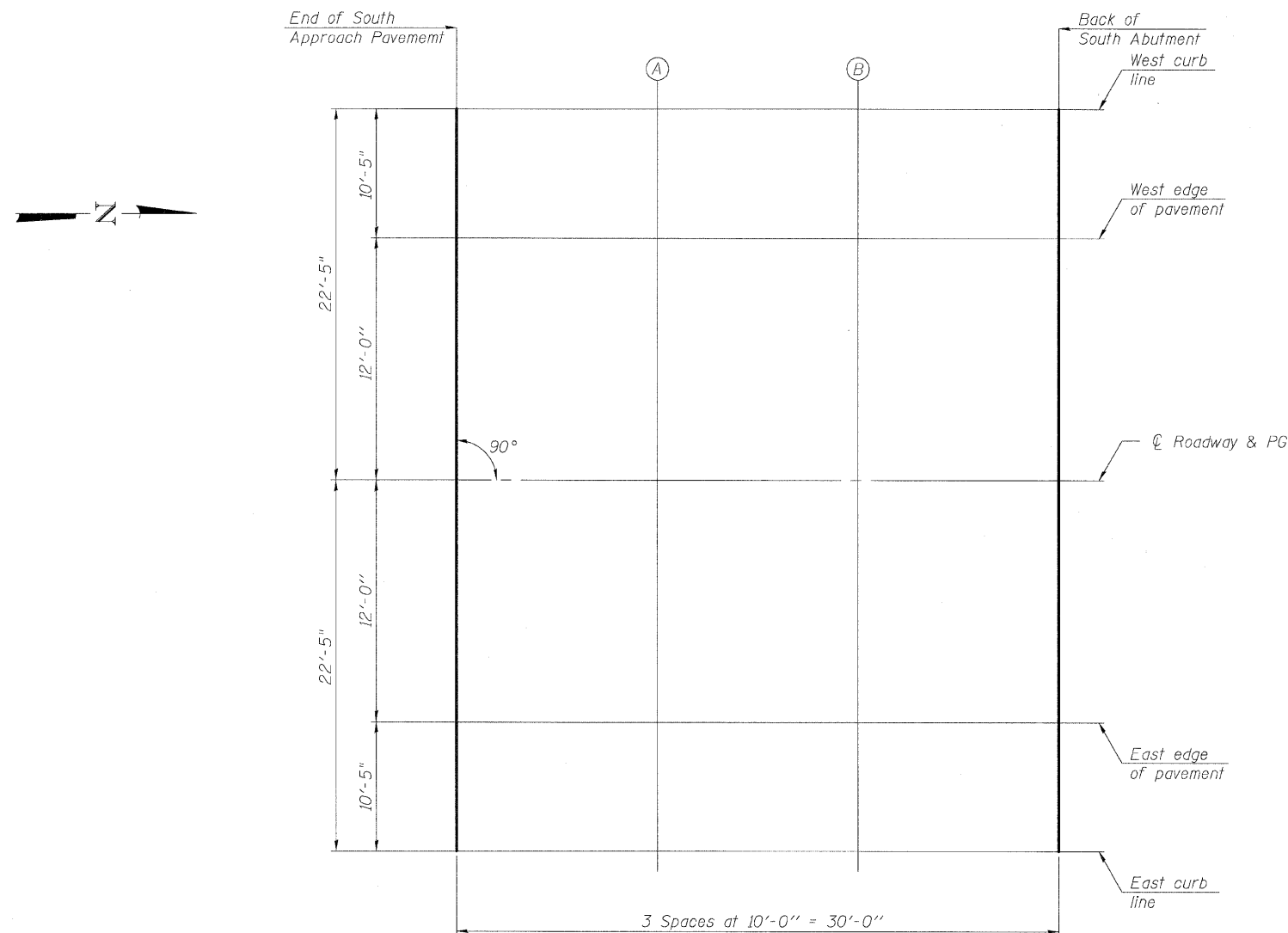
Location	Station	Offset	Theoretical Grade Elevations
End S. Appr. Pav't.	67+42.50	0.00	804.67
A	67+52.50	0.00	804.72
B	67+62.50	0.00	804.77
Bk. S. Abut.	67+72.50	0.00	804.82

EAST EDGE OF PAVEMENT

Location	Station	Offset	Theoretical Grade Elevations
End S. Appr. Pav't.	67+42.50	12.00	804.49
A	67+52.50	12.00	804.54
B	67+62.50	12.00	804.58
Bk. S. Abut.	67+72.50	12.00	804.63

EAST CURB LINE

Location	Station	Offset	Theoretical Grade Elevations
End S. Appr. Pav't.	67+42.50	22.42	804.27
A	67+52.50	22.42	804.32
B	67+62.50	22.42	804.37
Bk. S. Abut.	67+72.50	22.42	804.42



PLAN

FOR INFORMATION ONLY
NOT PART OF THIS CONTRACT

DESIGNED	CJB
CHECKED	PWO
DRAWN	DRP
CHECKED	PJM



V3 Companies of Illinois Ltd.
7325 Janes Avenue
Woodridge, IL 60517
630.724.9200 phone
630.724.9202 fax
www.v3co.com

**TOP OF SOUTH APPROACH
SLAB ELEVATIONS**

ILL. ROUTE 23 OVER
KISHWAUKEE RIVER
F.A.P. RT. 324 - SEC. 23B (1&2)F
MCHENRY COUNTY
STATION 69+02.50
STRUCTURE NO. 056-0001