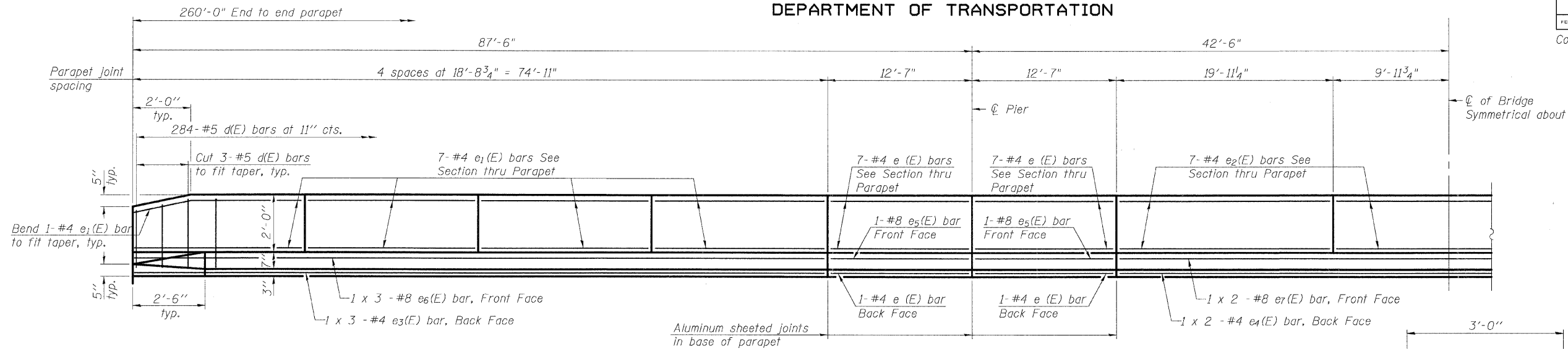


STATE OF ILLINOIS
DEPARTMENT OF TRANSPORTATION

ROUTE NO.	SECTION	COUNTY	TOTAL SHEETS	SHEET NO.	SHEET NO.
F.A.P. 324	23B (1&2)F	MCHENRY	17	12	
FED. ROAD DIST. NO. 7	ILLINOIS	FED. AID PROJECT-			

Contract # 60E54



INSIDE ELEVATION OF PARAPET

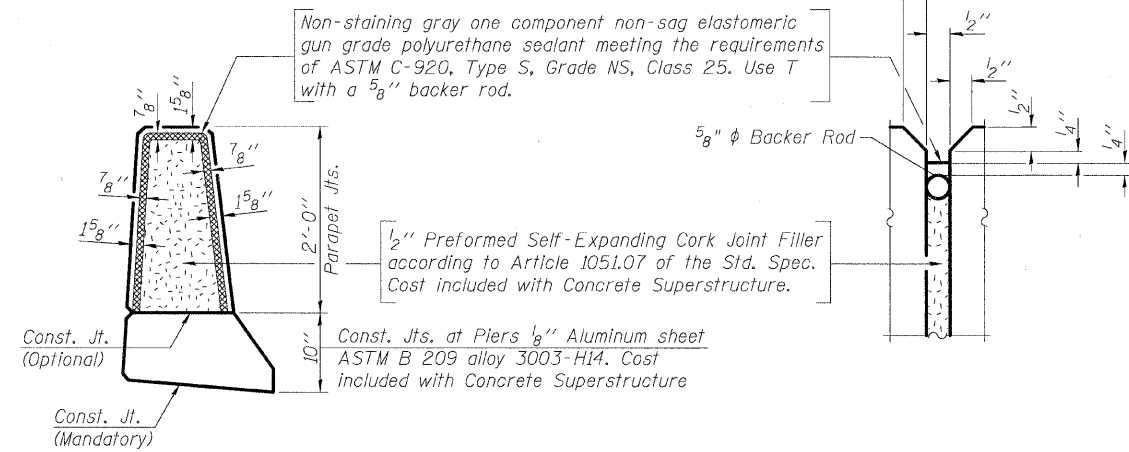
SUPERSTRUCTURE
BILL OF MATERIAL

Bar	No.	Size	Length	Shape
a(E)	447	#5	46'-6"	—
a ₁ (E)	313	#5	45'-10"	—
a ₂ (E)	894	#6	6'-0"	—
a ₃ (E)	16	#5	1'-6"	—
b(E)	450	#5	30'-4"	—
b ₁ (E)	94	#6	43'-7"	—
b ₂ (E)	410	#5	27'-5"	—
d(E)	568	#5	5'-7"	⌋
d ₁ (E)	568	#5	7'-9"	⌋
e(E)	64	#4	12'-3"	—
e ₁ (E)	112	#4	18'-5"	—
e ₂ (E)	42	#4	19'-7"	—
e ₃ (E)	12	#4	25'-11"	—
e ₄ (E)	4	#4	30'-6"	—
e ₅ (E)	8	#8	12'-3"	—
e ₆ (E)	12	#8	27'-11"	—
e ₇ (E)	4	#8	31'-11"	—
m(E)	4	#6	45'-0"	—
m ₁ (E)	6	#6	46'-10"	—
m ₂ (E)	8	#6	24'-6"	—
m ₃ (E)	14	#6	5'-6"	—
m ₄ (E)	4	#6	2'-10"	—
s(E)	96	#5	5'-3"	⌋
s ₁ (E)	82	#4	9'-0"	⌋
v(E)	92	#5	3'-4"	⌋
Reinforcement Bars, Epoxy Coated		Pound	91,540	
Concrete Superstructure		Cu. Yds.	409.2	

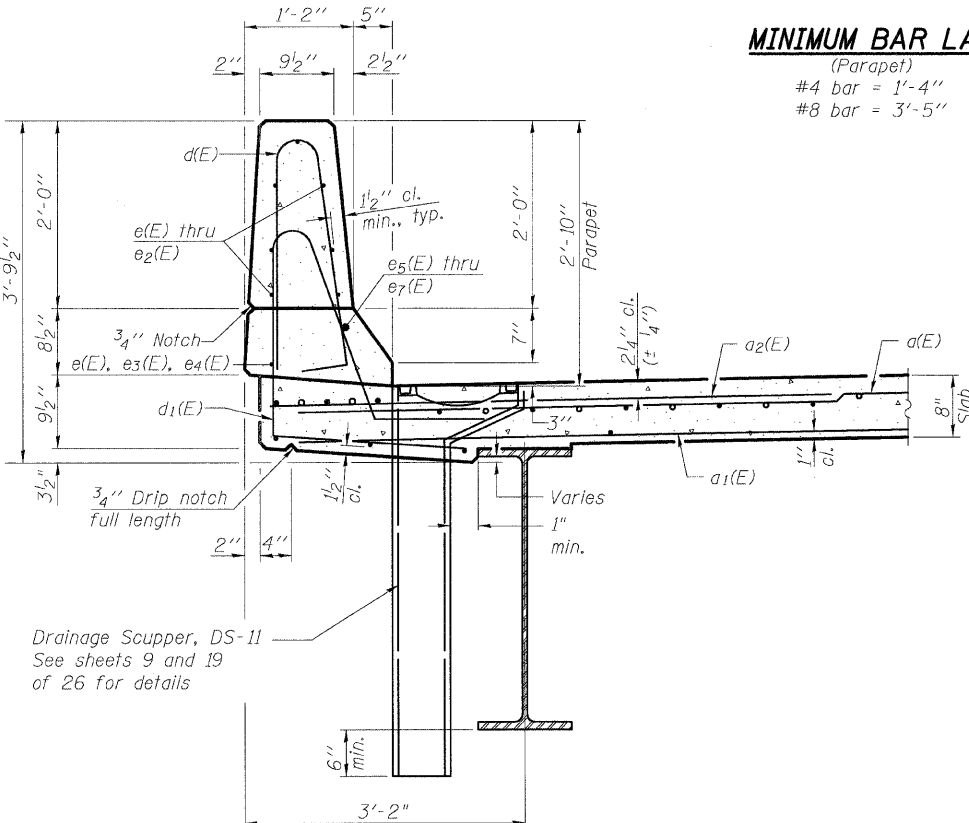
Bars indicated thus 1 x 3-#4 etc. indicates 1 line of bars with 3 lengths per line.

MINIMUM BAR LAP

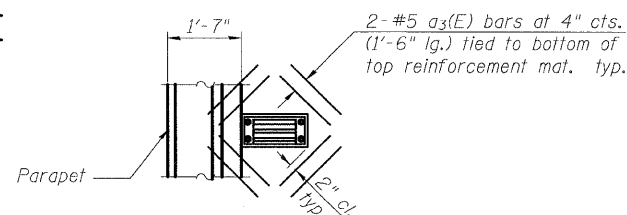
(Parapet)
#4 bar = 1'-4"
#8 bar = 3'-5"



PARAPET JOINT DETAILS

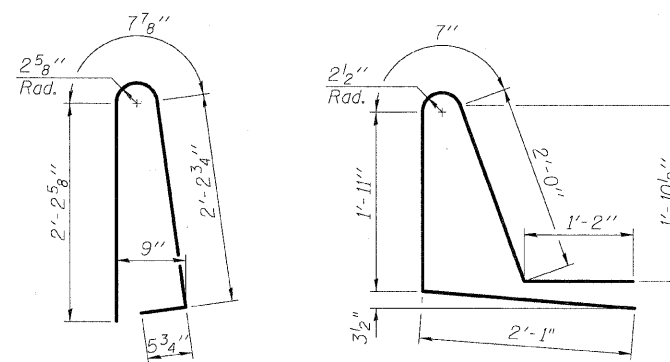


SECTION THRU PARAPET



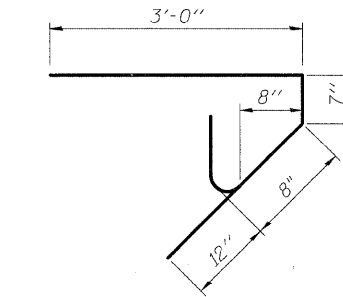
PARTIAL PLAN AT SCUPPER

Note:
Cut longitudinal reinforcement to clear drainage scuppers.

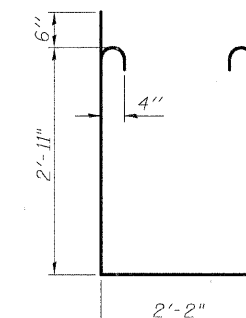


BAR d(E)

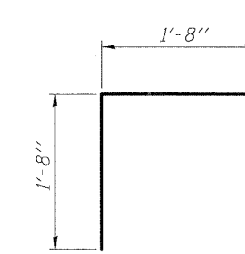
BAR d₁(E)



BAR s(E)



BAR s₁(E)



BAR v(E)

MIN. BAR LAP

(Parapet)
#4 bar = 1'-8"
#8 bar = 4'-6"

FOR INFORMATION ONLY
NOT PART OF THIS CONTRACT



V3 Companies of Illinois Ltd.
7325 Janes Avenue
Woodridge, IL 60517
630.724.9200 phone
630.724.9202 fax
www.v3co.com

SUPERSTRUCTURE
ILL. ROUTE 23 OVER
KISHWAUKEE RIVER
F.A.P. RT. 324 - SEC. 23B (1&2)F
MCHENRY COUNTY
STATION 69+02.50
STRUCTURE NO. 056-0001

DESIGNED	CJB
CHECKED	PWO
DRAWN	DRP
CHECKED	PJM