

Notes:
 Space reinforcement in cap to miss anchor bolts.
 Pour steps monolithically with cap.
 For details of piles, see sheet 16 of 26.

P1 = Pier 1, P2 = Pier 2

PILE DATA

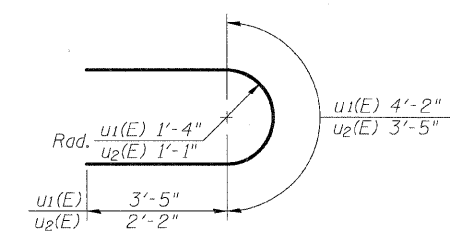
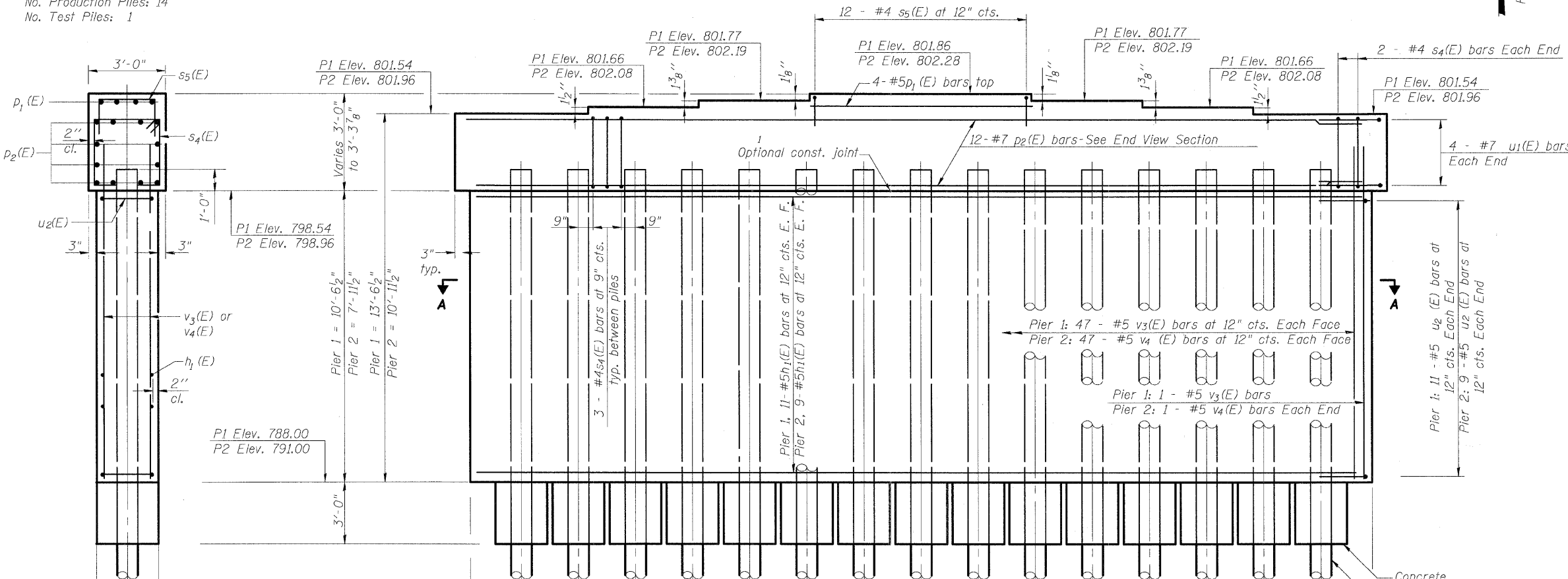
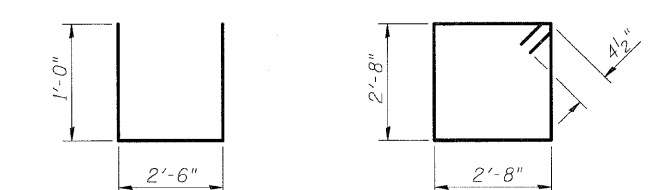
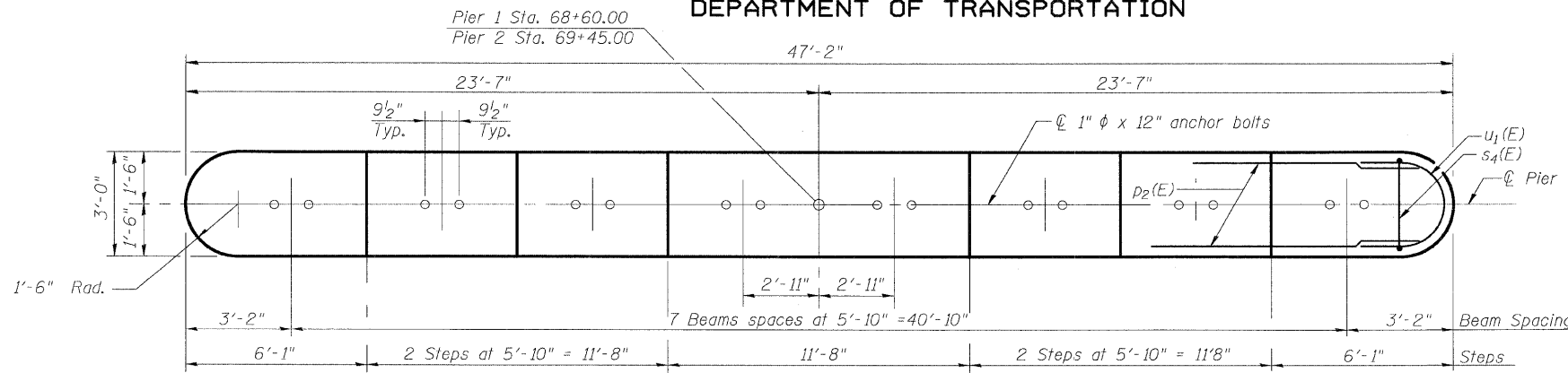
Pier 1
 Type: Metal Shell- 12" dia.x0.25 in. walls with pile shoes
 Nominal Required Bearing: 355 kips
 Factored Resistance Available: 178 kips
 Est. Length: 49'
 No. Production Piles: 14
 No. Test Piles: 1

Pier 2
 Type: Metal Shell- 12" dia.x0.25 in. walls with pile shoes
 Nominal Required Bearing: 355 kips
 Factored Resistance Available: 178 kips
 Est. Length: 50'
 No. Production Piles: 14
 No. Test Piles: 1

STATE OF ILLINOIS
 DEPARTMENT OF TRANSPORTATION

ROUTE NO.	SECTION	COUNTY	TOTAL SHEETS	SHEET NO.	SHEET NO.
F.A.P. 324	23B (1&2)F	MCHENRY	17	17	
FED. ROAD DIST. NO. 7	ILLINOIS	FED. AID PROJECT			

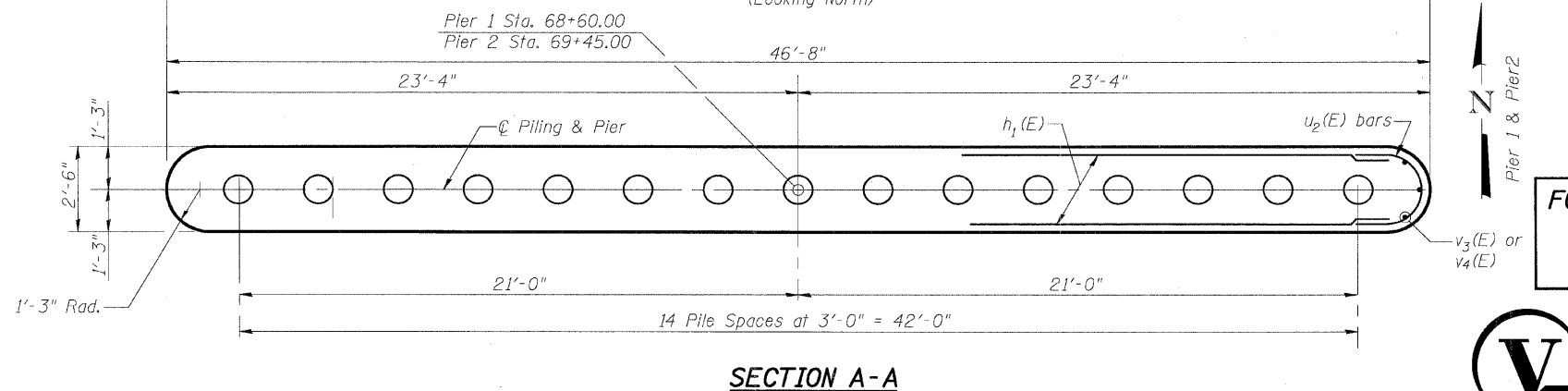
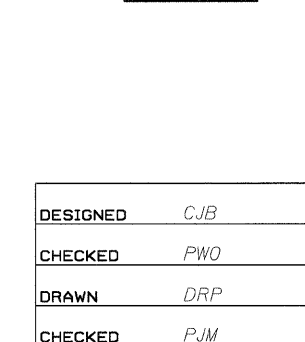
Contract # 60E54



BILL OF MATERIAL
 (Pier 1 & Pier 2)

Bar	No.	Size	Length	Shape
h ₁ (E)	40	#5	44'-2"	—
p ₁ (E)	8	#5	11'-4"	—
p ₂ (E)	24	#7	43'-10"	—
s ₄ (E)	92	#4	11'-5"	□
s ₅ (E)	24	#4	4'-6"	□
u ₁ (E)	16	#7	11'-0"	U
u ₂ (E)	40	#5	7'-9"	U
v ₃ (E)	96	#5	11'-8"	—
v ₄ (E)	96	#5	9'-0"	—
Structure Excavation		Cu. Yd.	194.0	
Concrete Structures		Cu. Yd.	111.3	
Reinforcement Bars, Epoxy Coated		Pound	7,610	
Furnishing Metal Shell Piles, 12"x0.250"		Foot	1386	
Driving Piles		Foot	1386	
Test Pile Metal Shells		Each	2	
Concrete Encasement		Cu. Yd.	16.4	
Pile shoes		Each	30	

END VIEW



FOR INFORMATION ONLY
 NOT PART OF
 THIS CONTRACT



V3 Companies of Illinois Inc.
 7325 Janes Avenue
 Woodridge, IL 60517
 630.724.9200 phone
 630.724.9202 fax
 www.v3co.com

PIERS

ILL. ROUTE 23 OVER
 KISHWAUKEE RIVER
 F.A.P. RT. 324 - SEC. 23B (1&2)F
 MCHENRY COUNTY
 STATION 69+02.50
 STRUCTURE NO. 056-0001

DESIGNED	CJB
CHECKED	PWO
DRAWN	DRP
CHECKED	PJM

F-MS

9-3-07