

20+2=22

F.A.P. RTE.	SECTION	COUNTY	TOTAL SHEETS	SHEET NO.
345	2008-036 LS	COOK	20	1
FED. ROAD DIST. NO.	ILLINOIS			
D-91-523-08	CONTRACT NO. 60E77			

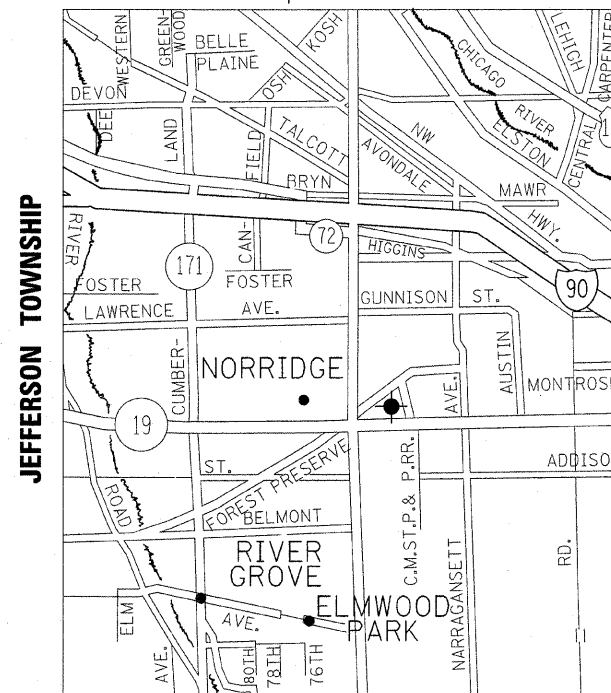
STATE OF ILLINOIS
DEPARTMENT OF TRANSPORTATION
DIVISION OF HIGHWAYS

**PROPOSED
HIGHWAY PLANS**

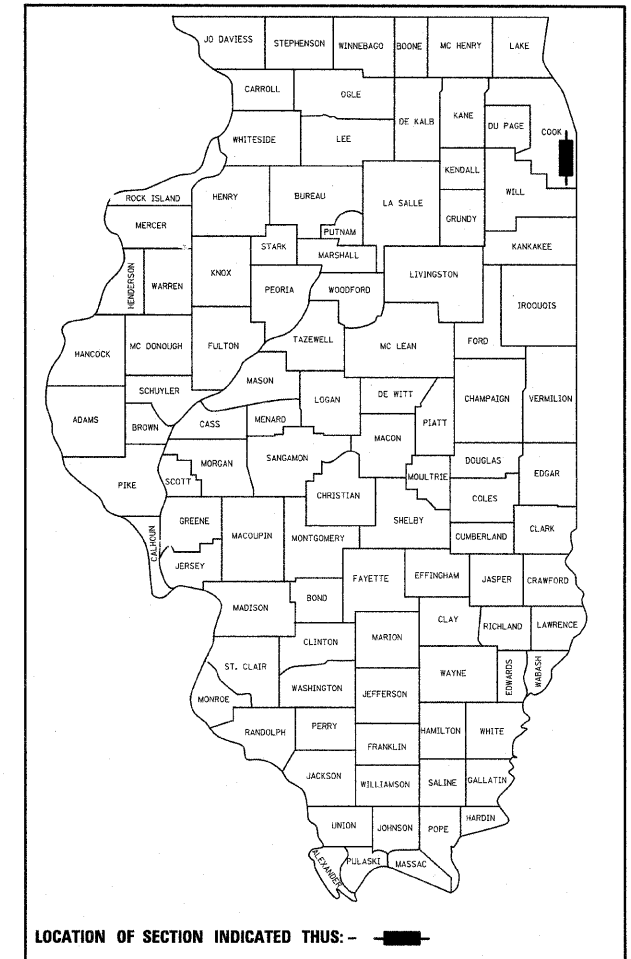
VARIOUS
SECTION 2008-036 LS
DRAINAGE AND GRADING
NORTHSIDE MAINTENANCE YARD AT
IL. RTE. 43 (HARLEM AVENUE) &
IL. RTE. 19 (IRVING PARK ROAD)
COOK COUNTY

C-91-523-08

• SIGNIFIES THE LOCATION OF THE MAINTENANCE YARD



LOCATION MAP



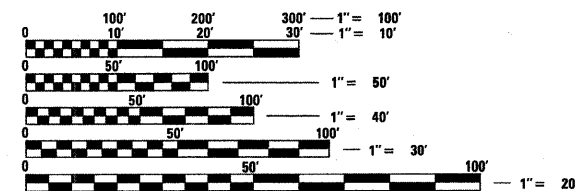
LOCATION OF SECTION INDICATED THUS: - ■ -

FOR INDEX OF SHEETS, SEE SHEET NO. 2

DESCRIPTION OF PROJECT

CHANNEL RESTORATION

PROJECT IS LOCATED
IN THE CITY OF CHICAGO



FULL SIZE PLANS HAVE BEEN PREPARED USING STANDARD ENGINEERING SCALES. REDUCED SIZED PLANS WILL NOT CONFORM TO STANDARD SCALES. IN MAKING MEASUREMENTS ON REDUCED PLANS, THE ABOVE SCALES MAY BE USED.

J.U.L.I.E.
JOINT UTILITY LOCATION INFORMATION FOR EXCAVATION
1-800-892-0123
OR 811

DISTRICT ONE BUREAU OF MAINTENANCE: J. STUMPNER
MAINTENANCE LANDSCAPE DESIGNER: R. WANNER/M. DEL ROSARIO (847) 705-4171

CONTRACT NO. 60E77

STATE OF ILLINOIS
DEPARTMENT OF TRANSPORTATION
DIVISION OF HIGHWAYS

SUBMITTED August 26, 20 08

Diana M. D'Krafe
DEPUTY DIRECTOR OF HIGHWAYS, REGION ENGINEER

October 3, 20 08
Eric E. Harrel
SENIOR ENGINEER OF DESIGN AND ENVIRONMENT

October 3, 20 08
Christine M. Reed
DIRECTOR OF HIGHWAYS, CHIEF ENGINEER

PRINTED BY THE AUTHORITY
OF THE STATE OF ILLINOIS

INDEX OF SHEETS

SHEET NO.	DESCRIPTION
1	TITLE SHEET
2	INDEX OF SHEETS, GENERAL NOTES AND STATE STANDARDS
3	SUMMARY OF QUANTITIES
4	ALIGNMENT AND TIES PLAN
5	EXISTING CONDITIONS PLAN
5A	EXISTING CONDITIONS -REFERENCE PLAN FOR EXCAVATION PLACEMENT
6	UTILITY PLAN
7	EXCAVATION AND GRADING PLAN
7A	PROPOSED EXCAVATION PLACEMENT PLAN
8	DRAINAGE AND EROSION CONTROL NOTES
9	DRAINAGE AND EROSION CONTROL PLAN
10	RESTRICTOR DETAIL
11	EROSION CONTROL DETAILS
12	DRAINAGE AND EROSION CONTROL DETAILS
13	LANDSCAPING PLAN
14-20	CROSS SECTIONS

GENERAL NOTES

- THE LOCATIONS OF EXISTING UTILITIES, AS SHOWN ON THE DRAWINGS, REPRESENT DATA RECEIVED FROM VARIOUS SOURCES. IT IS NOT GUARANTEED TO BE CORRECT OR ALL INCLUSIVE. THE CONTRACTOR MUST CONDUCT HIS OWN INVESTIGATIONS INTO THE LOCATION, SIZE, DEPTH, AND NATURE OF ANY AND ALL EXISTING UTILITIES WHICH MAY IMPACT THE WORK UNDER THIS CONTRACT. ANY EXISTING UTILITIES WHICH ARE TO REMAIN IN SERVICE MUST BE FULLY PROTECTED BY THE CONTRACTOR AND ANY DAMAGE CAUSED BY THE CONSTRUCTION MUST BE IMMEDIATELY REPAIRED AT THE CONTRACTOR'S EXPENSE TO THE SATISFACTION OF THE ENGINEER. THE CONTRACTOR WILL BE RESPONSIBLE FOR THE PROTECTION OF ANY AND ALL SURFACE AND UNDERGROUND UTILITIES, EVEN THOUGH THEY MAY NOT BE IDENTIFIED ON THE PLANS.
- THE CONTRACTOR MUST COORDINATE CONSTRUCTION ACTIVITIES WITH THE RESPECTIVE UTILITIES OF THE CITY OF CHICAGO, BEFORE STARTING ANY EXCAVATION. THE CONTRACTOR MUST CALL THE CHICAGO UTILITY ALERT NETWORK (C.U.A.N.) AT 312-744-7000 FOR FIELD LOCATIONS OF BURIED ELECTRICAL, TELEPHONE, CABLE, AND GAS FACILITIES (48 HOURS NOTIFICATION IS REQUIRED). THE CONTRACTOR MUST CONTACT THE CITY OF CHICAGO DEPARTMENT OF WATER MANAGEMENT, PERMIT SECTION AT 312-747-7893 FOR WATER AND CITY SEWER LOCATIONS.
- THE CONTRACTOR WILL NOT BE ALLOWED TO SET UP A YARD OR FIELD OFFICE ON STATE PROPERTY WITHOUT WRITTEN PERMISSION FROM IDOT.
- THE CONTRACTOR MUST USE CARE IN GRADING OR EXCAVATING NEAR ANY AND ALL EXISTING ITEMS THAT WILL NOT BE REMOVED. ANY DAMAGE DONE TO EXISTING ITEMS BY THE CONTRACTOR MUST BE REPAIRED BY THE CONTRACTOR AT THE CONTRACTOR'S OWN EXPENSE.
- ANY EXISTING OR PROPOSED STORM SEWER DAMAGED BY THE CONTRACTOR DURING CONSTRUCTION SHALL BE REPLACED TO THE SATISFACTION OF THE ENGINEER AT THE CONTRACTOR'S EXPENSE.
- ANY ABANDONED UTILITY OR SEWER ENCOUNTERED DURING CONSTRUCTION OR ANY EXISTING UTILITY OR SEWER AS PART OF THE CONSTRUCTION THAT IS NOT BEING FILLED WITH C.I.S.M AS PER PLAN, SHALL BE PLUGGED AS DIRECTED BY THE ENGINEER AND ABANDONED IN PLACE. THIS WORK SHALL BE INCLUDED IN THE COST OF THE CONTRACT.
- IT SHALL BE THE CONTRACTOR'S RESPONSIBILITY TO VERIFY ALL DIMENSIONS AND CONDITIONS EXISTING IN THE FIELD PRIOR TO CONSTRUCTION AND ORDERING OF MATERIALS.
- DO NOT SCALE PLANS FOR CONSTRUCTION DIMENSIONS.
- THE CONTRACTOR MUST TAKE ALL NECESSARY SAFETY PRECAUTIONS TO PROTECT AND PROVIDE ACCESS TO ADJUTING PROPERTY, UTILITIES, PEDESTRIANS, AND VEHICULAR TRAFFIC.
- DURING CONSTRUCTION OPERATIONS, IF ANY LOOSE MATERIAL IS DEPOSITED IN THE FLOW LINE OF DRAINAGE STRUCTURES SUCH THAT THE NATURAL FLOW OF WATER IS OBSTRUCTED, THE MATERIAL SHALL BE REMOVED AT THE CLOSE OF EACH WORKING DAY. AT THE CONCLUSION OF CONSTRUCTION OPERATIONS, ALL UTILITY STRUCTURES SHALL BE FREE FROM DUST AND DEBRIS. THE WORK SPECIFIED ABOVE WILL NOT BE PAID SEPARATELY BUT SHALL BE INCLUDED IN THE COST OF THE CONTRACT.
- APPROVED WATERING EQUIPMENT SHALL BE AT THE SITE OF THE WORK AND IN OPERATIONAL CONDITION PRIOR TO STARTING THE PLANTING OPERATION AND DURING ALL PLANTING OPERATIONS OR PLANTING WILL NOT BE ALLOWED.
- THE CONTRACTOR SHALL PROTECT ALL EXISTING PLANT MATERIAL FROM DAMAGE FOR WHICH THE CONTRACT DOES NOT PROVIDE REMOVAL. THE PROTECTION OF EXISTING PLANT MATERIAL AND THE REPAIR OR REPLACEMENT OF EXISTING PLANT MATERIAL DAMAGED BY THE CONTRACTOR SHALL BE DONE IN ACCORDANCE WITH THE REQUIREMENTS OF SECTION 201 OF THE IDOT STANDARD SPECIFICATIONS UNLESS OTHERWISE NOTED.
- THE CONTRACTOR WILL NOT BE ALLOWED TO PROCEED WITH ANY PLANTING WORK UNTIL ALL UTILITY OWNERS FIELD LOCATE THEIR FACILITIES WHICH MAY INTERFERE WITH CONSTRUCTION OPERATIONS. THE ACTUAL LOCATION OF PROPOSED LANDSCAPING WILL BE ADJUSTED IN THE FIELD TO AVOID UTILITIES.
- CONTRACTOR SHALL REPAIR IN KIND ANY OF THE VARIOUS GRASS AREAS DAMAGED AS A RESULT OF LANDSCAPE OPERATIONS.
- ALL WORK AREAS SHALL BE PROPERLY DRAINED DURING CONSTRUCTION. FINAL GRADES SHALL BE PROTECTED AGAINST DAMAGE FROM EROSION AND TRAFFIC.
- EARTH EXCAVATION SHALL BE SPREAD OUT IN THE DEPRESSED AREAS AROUND THE POND OR AT THE DIRECTION OF THE ENGINEER PER SPEC. 202.01.
- EARTH EXCAVATION SHALL BE STORED AT A GIVEN LOCATION AT THE DIRECTION OF THE ENGINEER.

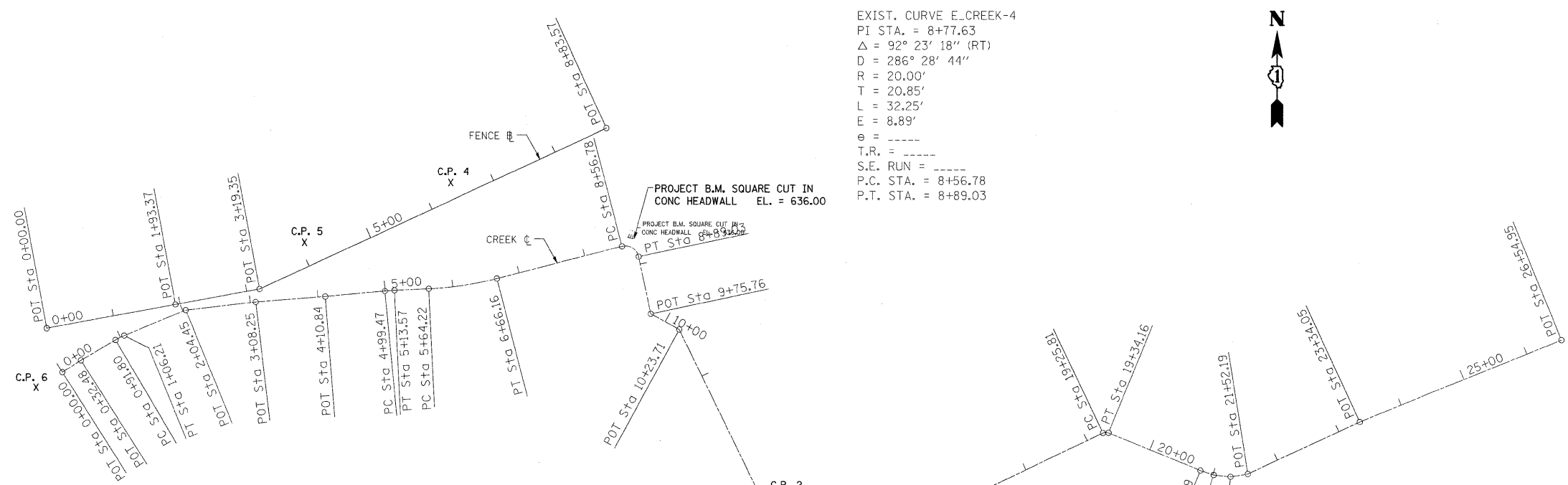
GENERAL NOTES / CITY OF CHICAGO

- IN CASE OF DAMAGE TO CITY OF CHICAGO SEWERS, PRIVATE AND PUBLIC DRAINS, SEWER STRUCTURES AND/OR BENCH MONUMENTS, THE CONTRACTOR MUST IMMEDIATELY CONTACT THE DEPARTMENT OF WATER MANAGEMENT AT 312-747-7892 OR 312-747-7893.
- IN LOCATIONS WHERE THE MAIN SEWERS, DRAINAGE STRUCTURES, PUBLIC AND PRIVATE DRAIN CONNECTIONS ARE DISTURBED OR DAMAGED DURING CONSTRUCTION BY THE CONTRACTOR, IT WILL BE THE CONTRACTOR'S RESPONSIBILITY TO RESTORE AND REPLACE THE DAMAGED FACILITIES AT HIS/HER OWN EXPENSE TO THE SATISFACTION OF THE DEPARTMENT OF WATER MANAGEMENT. THE SEWER FLOWS MUST BE MAINTAINED AT ALL TIMES.
- CITY OF CHICAGO WATER VALVE VAULTS AND SEWER STRUCTURES MUST NOT BE CLOSED, COVERED OR OTHERWISE OBSTRUCTED DURING CONSTRUCTION WITHOUT WRITTEN PERMISSION FROM THE CITY OF CHICAGO DEPARTMENT OF WATER MANAGEMENT.
- EXTREME CAUTION IS TO BE TAKEN TO ENSURE THAT NO FACILITY OWNED AND MAINTAINED BY THE DEPARTMENT OF WATER MANAGEMENT IS DAMAGED DURING CONSTRUCTION. IF ANY DAMAGE OCCURS TO ANY OF THE FACILITIES, THE CONTRACTOR WILL BE HELD RESPONSIBLE FOR THE COST OF REPAIRING OR REPLACING THEM.

STATE STANDARDS

000001-05	STANDARD SYMBOLS, ABBREVIATIONS AND PATTERNS
280001-04	TEMPORARY EROSION CONTROL SYSTEMS
542301-01	PRECAST REINFORCED CONCRETE FLARED END SECTION
542311	GRATING FOR CONCRETE FLARED END SECTION
602401-01	MANHOLE TYPE A
602601-01	OPTIONAL PRECAST REINFORCED CONCRETE FLAT SLAB TOP
604036-01	GRATE TYPE B
664001-01	CHAIN LINK FENCE

FILE NAME = K:\p199\07\IL430\119\sh_all.dgn	USER NAME = lejss	DESIGNED -	REVISED -	STATE OF ILLINOIS DEPARTMENT OF TRANSPORTATION	GENERAL NOTES AND STATE STANDARDS	F.A.P RTE.	SECTION	COUNTY	TOTAL SHEETS	SHEET NO.	
		DRAWN -	REVISED -			345	2008-036 LS	COOK	2		
		CHECKED -	REVISED -			CONTRACT NO. 60E77					
		DATE = 9/22/2008	REVISED -			SCALE:	SHEET NO.	OF	SHEETS	STA.	TO
						FED. ROAD DIST. NO. ILLINOIS FED. AID PROJECT					



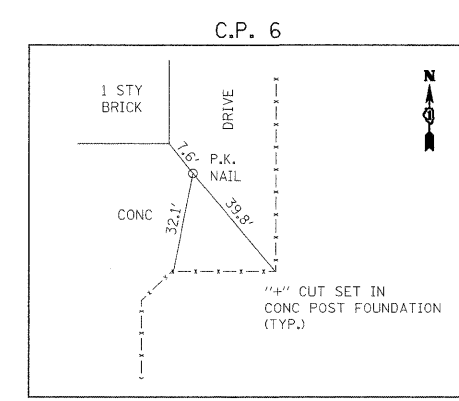
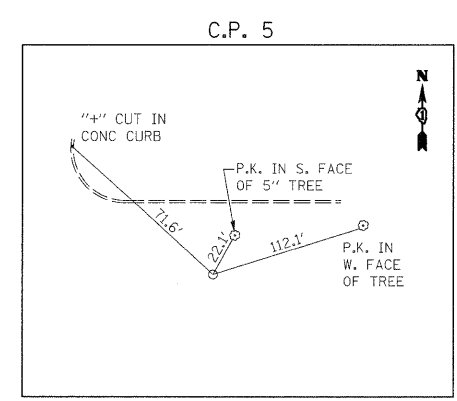
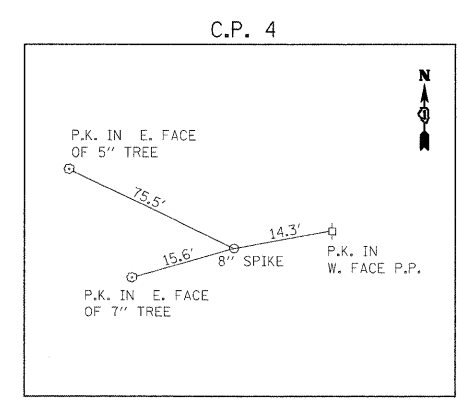
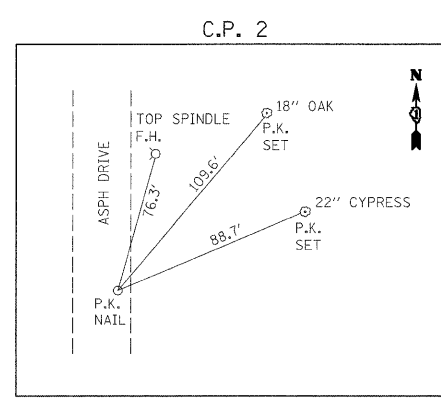
EXIST. CURVE E_CREEK-4
 PI STA. = 8+77.63
 $\Delta = 92^\circ 23' 18''$ (RT)
 D = 286' 28' 44"
 R = 20.00'
 T = 20.85'
 L = 32.25'
 E = 8.89'
 e = ----
 T.R. = ----
 S.E. RUN = ----
 P.C. STA. = 8+56.78
 P.T. STA. = 8+89.03

EXIST. CURVE E_CREEK-1
 PI STA. = 0+99.02
 $\Delta = 8^\circ 15' 12''$ (RT)
 D = 57' 17' 45"
 R = 100.00'
 T = 7.21'
 L = 14.40'
 E = 0.26'
 e = ----
 T.R. = ----
 S.E. RUN = ----
 P.C. STA. = 0+91.80
 P.T. STA. = 1+06.21

EXIST. CURVE E_CREEK-2
 PI STA. = 5+06.53
 $\Delta = 2^\circ 41' 34''$ (RT)
 D = 19' 05' 55"
 R = 300.00'
 T = 7.05'
 L = 14.10'
 E = 0.08'
 e = ----
 T.R. = ----
 S.E. RUN = ----
 P.C. STA. = 4+99.47
 P.T. STA. = 5+13.57

EXIST. CURVE E_CREEK-3
 PI STA. = 6+15.37
 $\Delta = 11^\circ 40' 53''$ (LT)
 D = 11' 27' 33"
 R = 500.00'
 T = 51.15'
 L = 101.94'
 E = 2.61'
 e = ----
 T.R. = ----
 S.E. RUN = ----
 P.C. STA. = 5+64.22
 P.T. STA. = 6+66.16

EXIST. CURVE E_CREEK-5
 PI STA. = 19+30.24
 $\Delta = 47^\circ 48' 48''$ (RT)
 D = 572' 57' 28"
 R = 10.00'
 T = 4.43'
 L = 8.35'
 E = 0.94'
 e = ----
 T.R. = ----
 S.E. RUN = ----
 P.C. STA. = 19+25.81
 P.T. STA. = 19+34.16



FILE NAME =
 K:\p199107\11.43e\119\sh_all.dgn

USER NAME = legsa
 PLOT SCALE = 100.0000' / IN.
 PLOT DATE = 8/27/2008

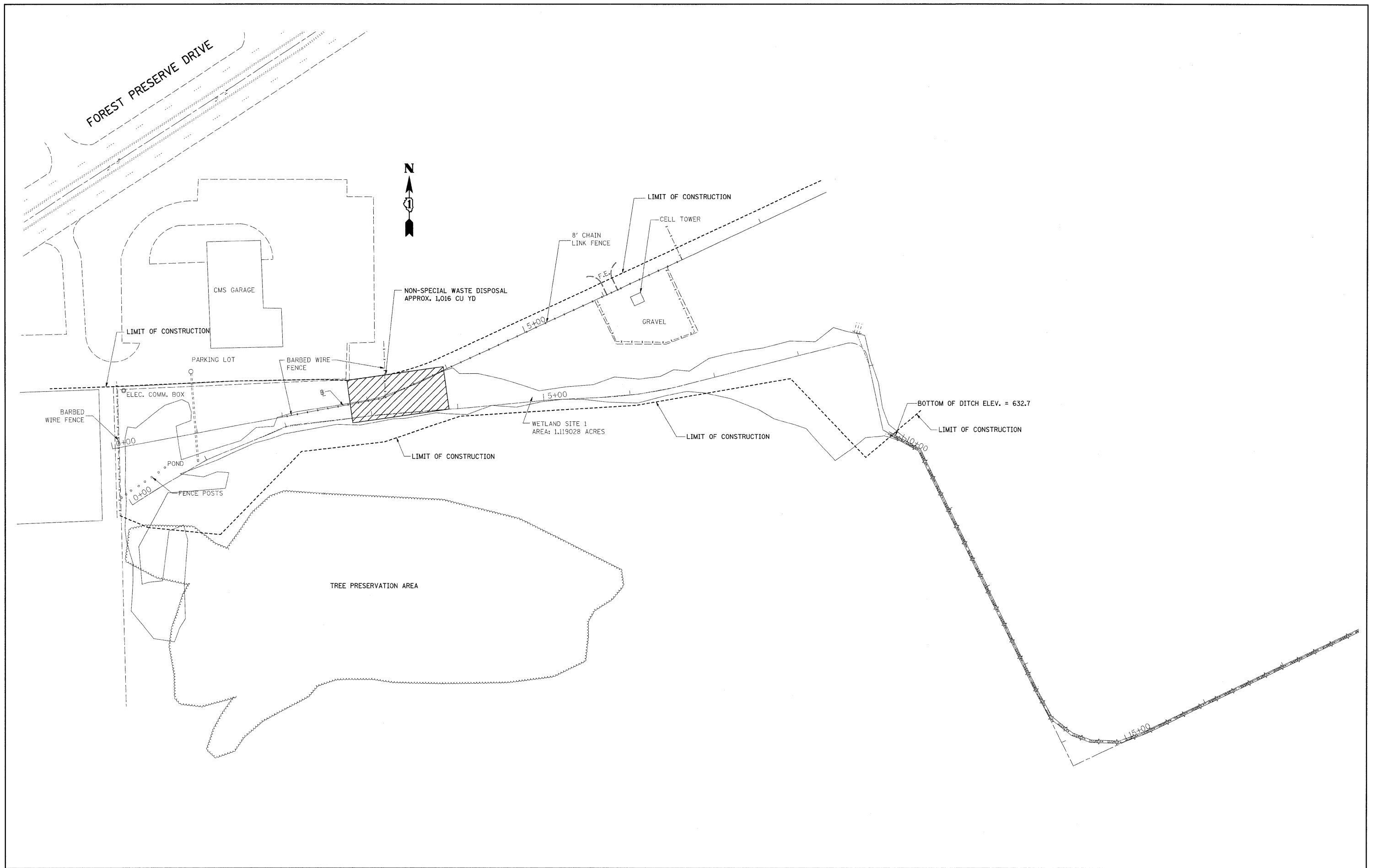
DESIGNED -	REVISED -
DRAWN -	REVISED -
CHECKED -	REVISED -
DATE -	REVISED -

**STATE OF ILLINOIS
 DEPARTMENT OF TRANSPORTATION**

**ALIGNMENT & TIES PLAN
 NORTHSIDE MAINTENANCE YARD - IL. RTE. 43 & IL. RTE. 19**

F.A.P. RTE. 345	SECTION 2008-036 LS	COUNTY COOK	TOTAL SHEETS 4	SHEET NO. 4
CONTRACT NO. 60E77				
FED. ROAD DIST. NO. ILLINOIS FED. AID PROJECT				

SCALE: 1"=100' SHEET NO. OF SHEETS STA. TO STA.



FILE NAME = K:\p199107\IL43&19\sh_e11.dgn
 USER NAME = leusa
 PLOT SCALE = 50.0000' / IN.
 PLOT DATE = 8/27/2008

DESIGNED -
 DRAWN -
 CHECKED -
 DATE -

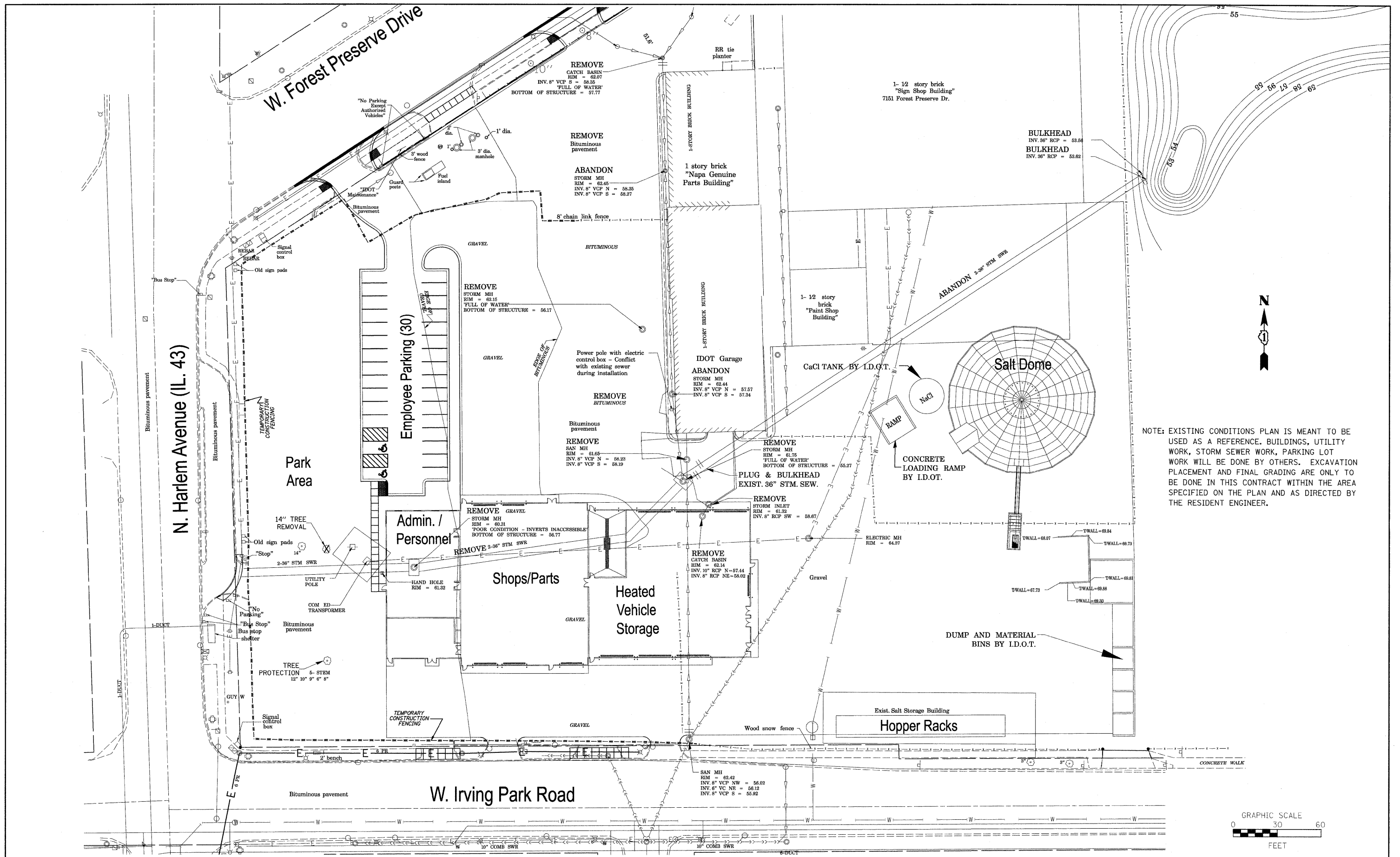
REVISED -
 REVISED -
 REVISED -
 REVISED -

STATE OF ILLINOIS
 DEPARTMENT OF TRANSPORTATION

EXISTING CONDITIONS PLAN
 NORTHSIDE MAINTENANCE YARD - IL. RTE. 43 & IL. RTE. 19
 SCALE: 1"=50' SHEET NO. OF SHEETS STA. TO STA.

F.A.P. RTE.	SECTION	COUNTY	TOTAL SHEETS	SHEET NO.
345	2008-036 LS	COOK	5	5
CONTRACT NO. 60E77				

FED. ROAD DIST. NO. ILLINOIS FED. AID PROJECT



NOTE: EXISTING CONDITIONS PLAN IS MEANT TO BE USED AS A REFERENCE. BUILDINGS, UTILITY WORK, STORM SEWER WORK, PARKING LOT WORK WILL BE DONE BY OTHERS. EXCAVATION PLACEMENT AND FINAL GRADING ARE ONLY TO BE DONE IN THIS CONTRACT WITHIN THE AREA SPECIFIED ON THE PLAN AND AS DIRECTED BY THE RESIDENT ENGINEER.

FILE NAME = K:\p19127\IL43\IL19\landscape_00.dgn
 USER NAME = lrysa
 DESIGNED -
 DRAWN -
 CHECKED -
 DATE -

PLOT SCALE = 30,0000' / IN.
 PLOT DATE = 9/22/2008

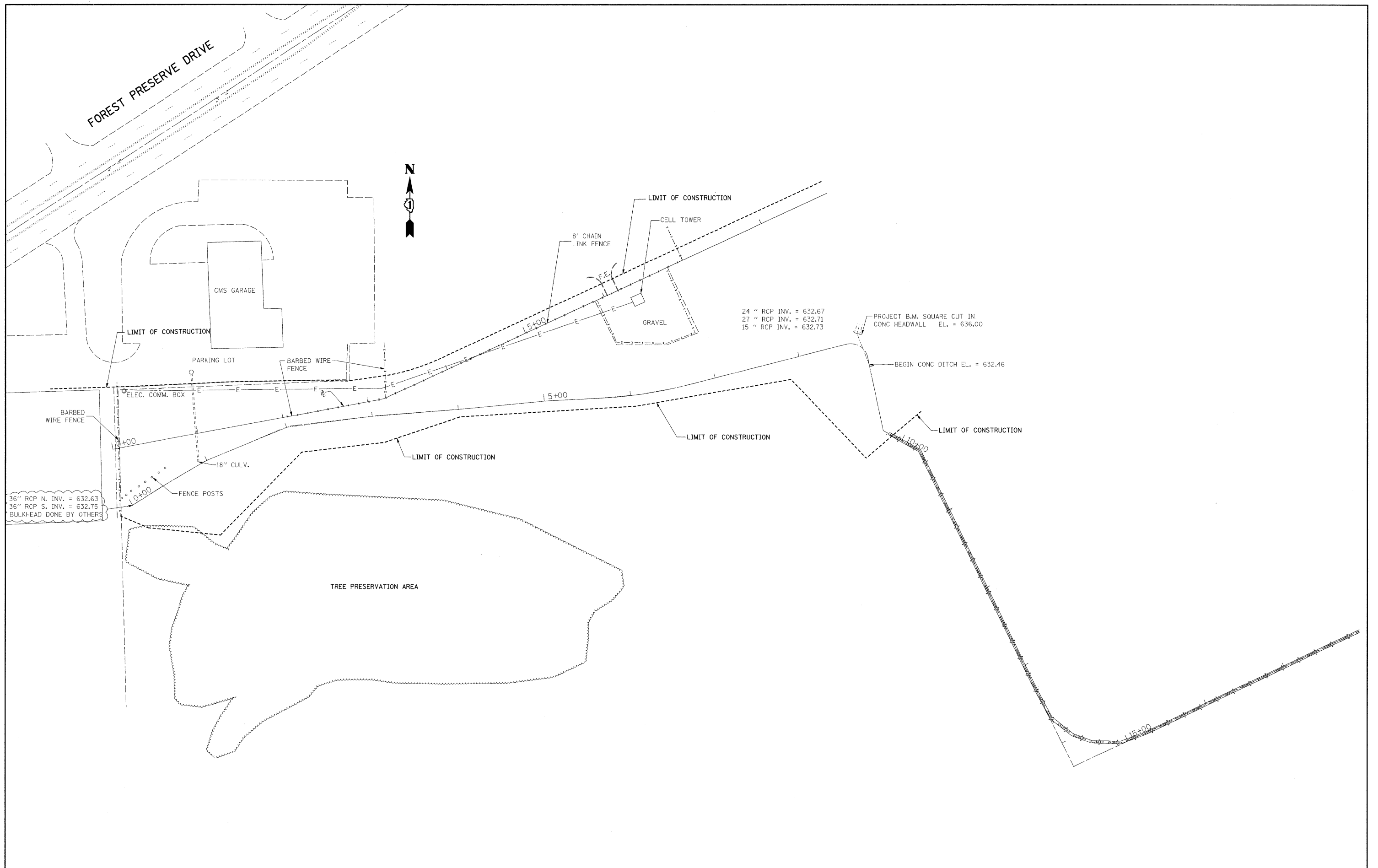
REVISOR -
 REVISION -
 REVISION -
 REVISION -

STATE OF ILLINOIS
 DEPARTMENT OF TRANSPORTATION

STATE OF ILLINOIS
 DEPARTMENT OF TRANSPORTATION

EXISTING CONDITIONS - REFERENCE PLAN FOR EXCAVATION PLACEMENT
 NORTHSIDE MAINTENANCE YARD - IL. RTE. 43 & IL. RTE. 19
 SCALE: 1"=30' SHEET NO. OF SHEETS STA. TO STA.

F.A.P. RTE. 345	SECTION 2008-036 LS	COUNTY COOK	TOTAL SHEETS 5A	SHEET NO. 5A
FED. ROAD DIST. NO. ILLINOIS FED. AID PROJECT			CONTRACT NO. 60E77	



FILE NAME = K:\p199107\IL43eLL19\sh_e11.dgn

USER NAME = leysa
 PLOT SCALE = 50.0000' / IN.
 PLOT DATE = 8/27/2008

DESIGNED -
 DRAWN -
 CHECKED -
 DATE -

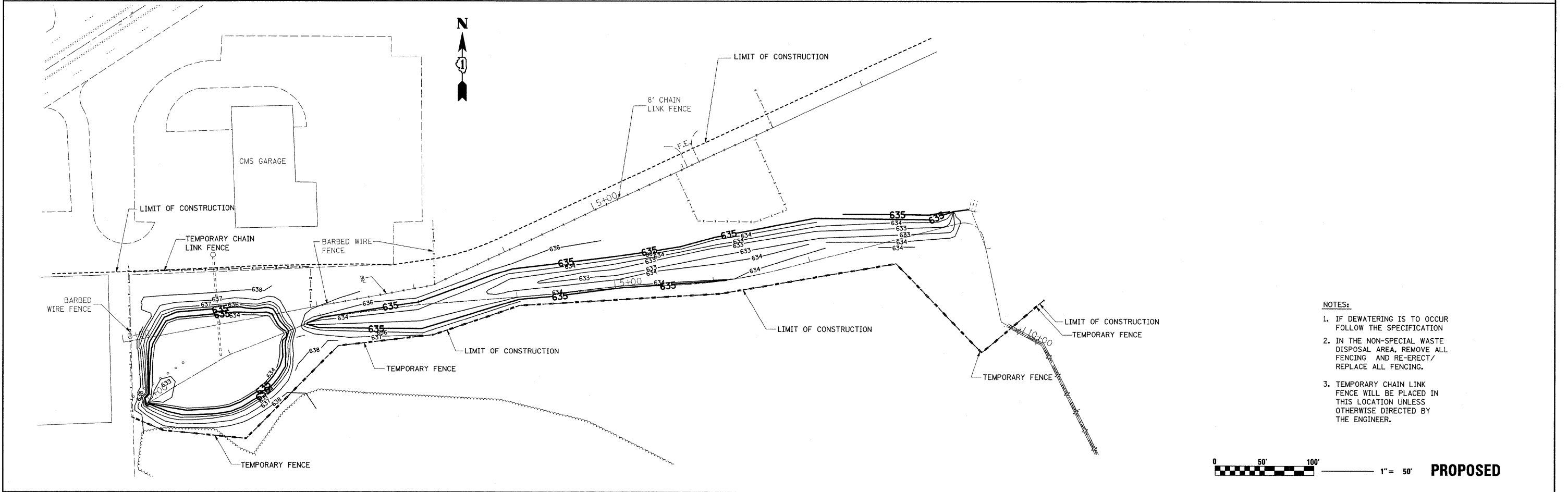
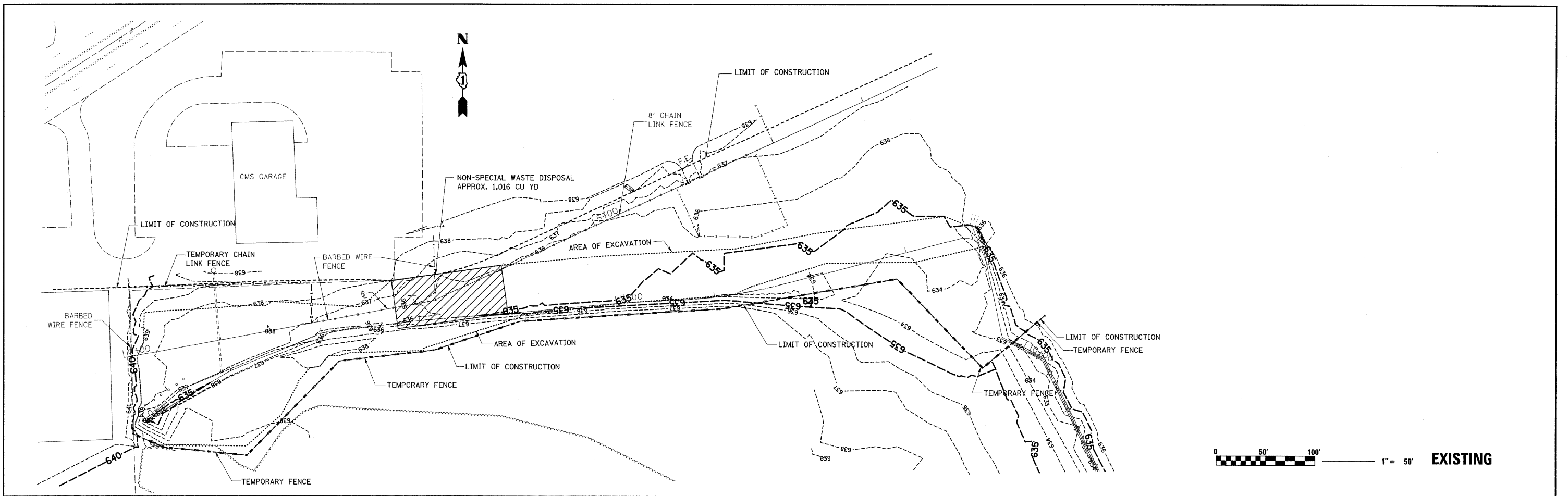
REVISED -
 REVISED -
 REVISED -
 REVISED -

**STATE OF ILLINOIS
 DEPARTMENT OF TRANSPORTATION**

**UTILITY PLAN
 NORTHSIDE MAINTENANCE YARD - IL. RTE. 43 & IL. RTE. 19**

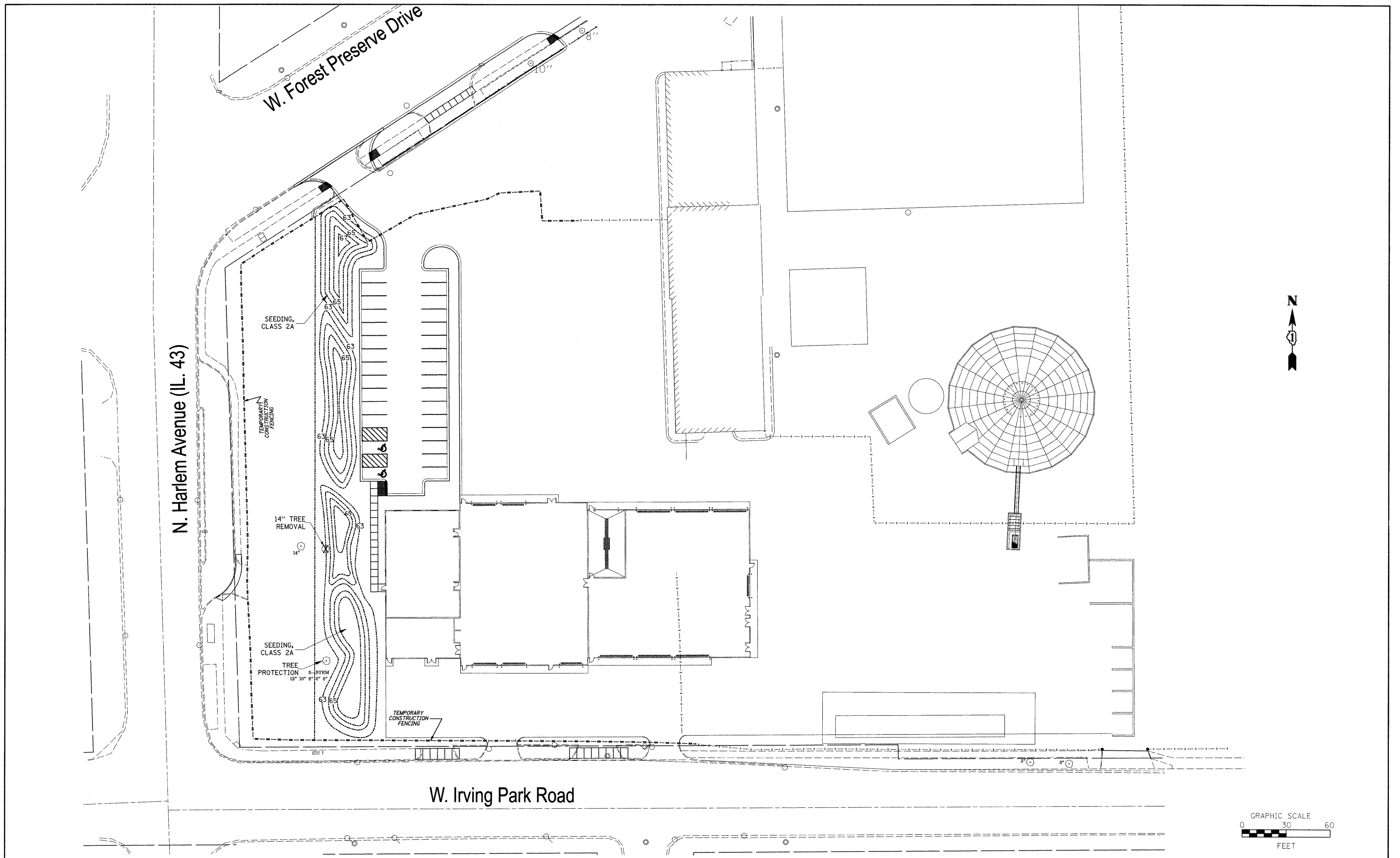
F.A.P. RTE. 345	SECTION 2008-036 LS	COUNTY COOK	TOTAL SHEETS 6	SHEET NO. 6
SCALE: 1"=50'			SHEET NO. OF SHEETS STA. TO STA.	
FED. ROAD DIST. NO. ILLINOIS FED. AID PROJECT				

CONTRACT NO. 60E77



- NOTES:**
1. IF DEWATERING IS TO OCCUR FOLLOW THE SPECIFICATION
 2. IN THE NON-SPECIAL WASTE DISPOSAL AREA, REMOVE ALL FENCING AND RE-ERECT/REPLACE ALL FENCING.
 3. TEMPORARY CHAIN LINK FENCE WILL BE PLACED IN THIS LOCATION UNLESS OTHERWISE DIRECTED BY THE ENGINEER.

FILE NAME = K:\p199107\IL43e\119\sh_e11.dgn	USER NAME = leyo	DESIGNED -	REVISED -	STATE OF ILLINOIS DEPARTMENT OF TRANSPORTATION	EXCAVATION AND GRADING PLAN NORTHSIDE MAINTENANCE YARD - IL RTE. 43 & IL RTE. 19				F.A.P. RTE. 345	SECTION 2008-036 LS	COUNTY COOK	TOTAL SHEETS 7	SHEET NO. 7
	PLOT SCALE = 50.0000' / IN.	DRAWN -	REVISED -		SCALE: 1"=50'	SHEET NO.	OF SHEETS	STA.	TO STA.	FED. ROAD DIST. NO. ILLINOIS FED. AID PROJECT			
	PLOT DATE = 9/22/2008	CHECKED -	REVISED -							CONTRACT NO. 60E77			
		DATE -	REVISED -										



FILE NAME =
K:\p199\07\IL43\IL19\landscape_00.dgn

USER NAME = leusa
PLOT SCALE = 30.0000' / IN.
PLOT DATE = 9/22/2008

DESIGNED -
DRAWN -
CHECKED -
DATE -

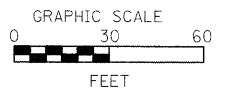
REVISED -
REVISED -
REVISED -
REVISED -

**STATE OF ILLINOIS
DEPARTMENT OF TRANSPORTATION**

**PROPOSED EXCAVATION PLACEMENT PLAN
NORTHSIDE MAINTENANCE YARD - IL. RTE. 43 & IL. RTE. 19**

SCALE: 1"=30' SHEET NO. OF SHEETS STA. TO STA.

F.A.P. RTE. 345	SECTION 2008-036 LS	COUNTY COOK	TOTAL SHEETS	SHEET NO. 7A
FED. ROAD DIST. NO. ILLINOIS FED. AID PROJECT			CONTRACT NO. 60E77	



1. UNLESS OTHERWISE INDICATED, ALL VEGETATIVE AND STRUCTURAL EROSION AND SEDIMENT CONTROL PRACTICES WILL BE INSTALLED AT A MINIMUM, ACCORDING TO THE IDOT STANDARD SPECIFICATIONS, SPECIAL PROVISIONS, HIGHWAY STANDARDS AND DETAILS CONTAINED HEREIN, REVISED TO THE LATEST EDITION AS AMENDED. A COPY OF THE APPROVED EROSION AND SEDIMENTATION CONTROL PLAN IN CONJUNCTION WITH THE STORMWATER POLLUTION PREVENTION PLAN (SWPPP) SHALL BE MAINTAINED ON THE SITE AT ALL TIMES.
2. THE CONTRACTOR SHALL CLEAN UP AND GRADE THE WORK AREA AS THE PROJECT PROGRESSES TO ELIMINATE THE CONCENTRATION OF RUNOFF, OR SHALL INSTALL APPROPRIATE SEDIMENT CONTROL DEVICES TO TRAP SEDIMENT. PAVEMENT SHALL BE CLEANED DAILY TO REMOVE EARTHEN MATERIAL TO THE SATISFACTION OF THE RESIDENT ENGINEER.
3. DURING DEWATERING OPERATIONS, WATER WILL BE PUMPED INTO SEDIMENTATION BASINS OR SILT TRAPS. DEWATERING DIRECTLY INTO FIELD TILES, STORMWATER STRUCTURES OR WATERS OF THE U.S. IS STRICTLY PROHIBITED.
4. THE CONTRACTOR SHALL MAINTAIN AND PRESERVE ANY EXISTING SUB-SURFACE DRAINAGE SYSTEMS, SUCH AS FIELD TILES, ACCORDING TO EXISTING DESIGN AND CONSTRUCTION STANDARDS.
5. A WRITTEN STORMWATER POLLUTION PREVENTION PLAN (SWPPP), MEETING THE REQUIREMENTS OF THE ILLINOIS ENVIRONMENTAL PROTECTION AGENCY CURRENT NPDES STORM WATER PERMIT FOR CONSTRUCTION ACTIVITIES, HAS BEEN PROVIDED INCLUDING DETAILS OF SPECIFIC DEVICES INCLUDING, BUT NOT LIMITED TO, SILT FENCE AND DITCH CHECKS, TO BE UTILIZED FOR EROSION AND SEDIMENT CONTROL.
6. CONSTRUCTION ACTIVITIES SHALL BE SCHEDULED TO MINIMIZE THE TIME SOIL IS EXPOSED AND UNPROTECTED.
7. THE CONTRACTOR SHALL MAKE INSPECTIONS A MINIMUM OF ONCE EVERY SEVEN (7) DAYS OF THE FOLLOWING:
 - A. DISTURBED AREAS OF THE PROJECT SITE THAT HAVE NOT BEEN FULLY STABILIZED.
 - B. STRUCTURAL CONTROL MEASURES, INCLUDING BUT NOT LIMITED TO, SILT FENCE AND DITCH CHECKS.
 - C. LOCATIONS WHERE VEHICLES ENTER AND EXIT THE SITE.
8. THE CONTRACTOR MUST COOPERATE WITH ANY AGENTS WHO MAKE THE SITE VISITS TO REVIEW COMPLIANCE WITH THE STORMWATER POLLUTION PREVENTION PLAN (SWPPP) IN THE FIELD AND AUDIT THE LOGS AND RECORDS REQUIRED BY THE PERMIT.
9. STOCKPILES OF SOIL SHALL NOT BE LOCATED WITHIN FLOODPLAINS, RIPARIAN AREAS, WETLANDS AND WATERS OF THE U.S.
10. IF A STOCKPILE IS TO REMAIN IN PLACE FOR MORE THAN THREE (3) DAYS, THEN SEDIMENT AND EROSION CONTROL SHALL BE PROVIDED FOR SAID STOCKPILE. SEDIMENT AND EROSION CONTROL MAY BE COMPRISED OF SILT FENCE SURROUNDING THE STOCKPILE OR A COVERING OVER THE STOCKPILE AND TEMPORARY SEEDING.

11. IF THE VOLUME, VELOCITY, SEDIMENT LOAD OR PEAK FLOW RATES OF STORMWATER RUNOFF ARE TEMPORARILY INCREASED DURING CONSTRUCTION, THEN PROPERTIES AND SPECIAL MANAGEMENT AREAS DOWNSTREAM FROM SUCH DEVELOPMENT SITES SHALL BE PROTECTED FROM EROSION.
12. ANY AGGREGATE BASE EROSION CONTROL MEASURES SHALL BE REMOVED AND REPLACED WITH NEW AGGREGATE WHEN STRUCTURE BECOMES PLUGGED, SILT LADEN OR AS REQUIRED BY INSPECTION.
13. EROSION CONTROL MEASURES SHALL BE PROVIDED FOR ALL EXISTING AND PROPOSED INLET STRUCTURES WITHIN THE CONSTRUCTION LIMITS.
14. ALL AREAS BROUGHT TO FINAL GRADE WILL BE STABILIZED WITH TOPSOIL, PERMANENT VEGETATION AND EROSION CONTROL BLANKET. EROSION CONTROL BLANKET WILL ALSO BE PLACED AS INDICATED IN THE EROSION AND SEDIMENT CONTROL PLANS.
15. NATURAL RESOURCE CONSERVATION SERVICE (NRCS) AND THE ILLINOIS DEPARTMENT OF TRANSPORTATION (IDOT) STANDARDS PRESENTED ON THE CONTRACT DRAWINGS ARE TO BE CONSIDERED A MINIMUM.
16. ANY EROSION AND/OR SEDIMENTATION CONTROL DEVICES DISRUPTED, THAT BELONG TO ANY CONCURRENT CONSTRUCTION CONTRACTS, SHALL BE REPLACED IN KIND AT THE CONTRACTOR'S EXPENSE.
17. CONTRACTOR SHALL BE RESPONSIBLE FOR MAINTAINING TEMPORARY DRAINAGE DURING THE PROJECT. DAMAGE TO THE SUBGRADE, EXISTING FACILITIES AND/OR CONSTRUCTED WORK WILL BE REPLACED BY THE CONTRACTOR AS DIRECTED BY THE RESIDENT ENGINEER AT NO ADDITIONAL COST.
18. TEMPORARY AND/OR PERMANENT SOIL STABILIZATION (VEGETATION OR HARDSCAPE) SHALL BE APPLIED TO EXPOSED AREAS AS SOON AS POSSIBLE. AS A MINIMUM, SOIL STABILIZATION SHALL BE PROVIDED WITHIN FOURTEEN (14) DAYS AFTER FINAL GRADE IS REACHED ON ANY PORTION OF THE SITE AND WITHIN FOURTEEN (14) DAYS TO EXPOSED AREAS WHICH MAY NOT BE AT FINAL GRADE BUT WILL REMAIN UNDISTURBED FOR LONGER THAN TWENTY-ONE (21) DAYS.
19. ALL TEMPORARY FENCING IN WETLAND AREAS SHALL BE ERECTED AT THE CONSTRUCTION LIMITS.
20. "NO INTRUSION AREA" SIGNS SHALL BE ERECTED AT BOTH ENDS OF WETLAND AREAS AND THEN EVERY 250 FEET AS SHOWN ON THE PLANS, SIGNS WILL NOT BE MEASURED FOR PAYMENT, BUT CONSIDERED INCIDENTAL TO TEMPORARY FENCE.

MAINTENANCE FOR SOIL EROSION CONTROL MEASURES

1. INSPECTIONS SHALL BE PERFORMED AT LEAST ONCE EVERY SEVEN (7) CALENDAR DAYS AND WITHIN 24 HOURS OF THE END OF A STORM THAT IS 0.5 INCHES OR GREATER OR EQUIVALENT SNOWFALL.
2. VEGETATIVE GROWTH OF TEMPORARY OR PERMANENT SEEDING, SODDING AND VEGETATED CHANNELS SHALL BE MAINTAINED ON A CONTINUAL BASIS WITH ADEQUATE WATER AND FERTILIZER.
3. THE VEGETATIVE COVER SHALL BE REMOVED AND RE-SEEDED/REPLACED AS NECESSARY UNTIL GERMINATION OR UNTIL BARE EARTH AREAS SUPPORT VEGETATION.
4. PERIMETER EROSION BARRIER SHALL BE INSPECTED PERIODICALLY AND REPAIRED AS NEEDED.
5. INLET PROTECTION, PERIMETER EROSION BARRIER AND DITCH CHECKS SHALL HAVE SEDIMENT REMOVED UPON REACHING HALF THE HEIGHT OR CAPACITY OF THE DEVICE.

SUGGESTED SOIL EROSION AND SEDIMENTATION CONTROL AND SEQUENCING

PRE-STAGE

1. INSTALL PERIMETER EROSION CONTROL BARRIERS AND OTHER EROSION CONTROL MEASURES AS SHOWN ON PLANS.
2. INSTALL TEMPORARY DITCH CHECKS AND SEDIMENTATION TRAP AS SHOWN ON PLANS.
3. BEGIN CLEARING OPERATIONS AFTER INSTALLATION OF PERIMETER EROSION BARRIER FOR CURRENT APPLICABLE PHASE.

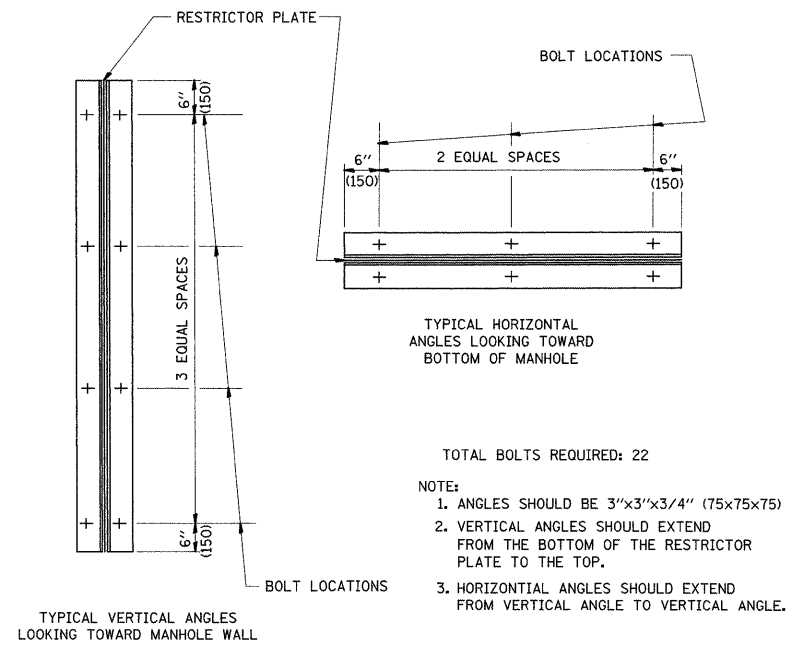
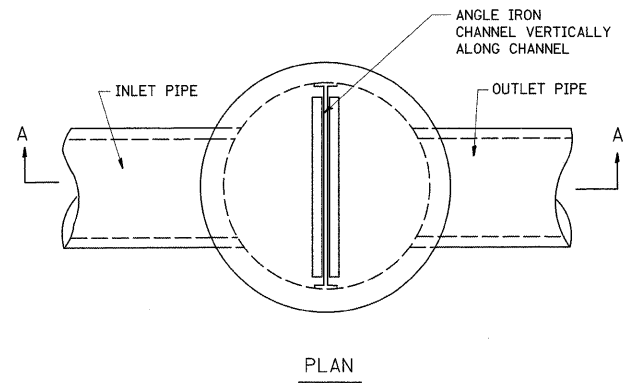
STAGE 1

1. EXCAVATE DOWNSTREAM BY THE CONCRETE HEADWALL (WEST END OF PROJECT, ELEVATION 636).
2. GRADE AS SHOWN ON PLANS.
3. APPLY PERMANENT SEEDING AND EROSION CONTROL BLANKET TO AREAS DISTURBED DURING REMOVAL AS NECESSARY.

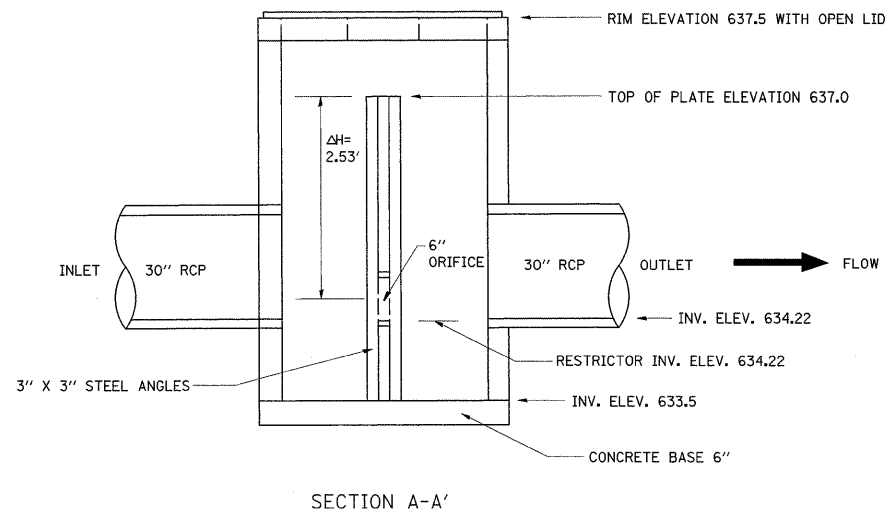
STAGE 2

1. SET UP A TEMPORARY DRAINAGE DITCH DIVERSION (INCIDENTAL TO CONTRACT) FROM THE 24" RCP INV. = 634.62 USING A METHOD ACCEPTABLE TO THE ENGINEER.
2. INSTALL MANHOLE WITH RESTRICTOR PLATE WITH STORM SEWER STRUCTURES.
3. INSTALL TEMPORARY AGGREGATE DITCH CHECK MOUNDED 4" AT THE OUTFALL PIPE. AFTER CONSTRUCTION, LEVEL THE DITCH CHECK AND KEEP AS PERMANENT OUTFALL STABILIZATION. AN OUTFALL STABILIZATION SHALL ALSO BE PLACED AT THE 24" RCP INV. = 634.62.
4. APPLY PERMANENT SEEDING AND EROSION CONTROL BLANKET TO AREAS DISTURBED DURING REMOVAL AS NECESSARY.

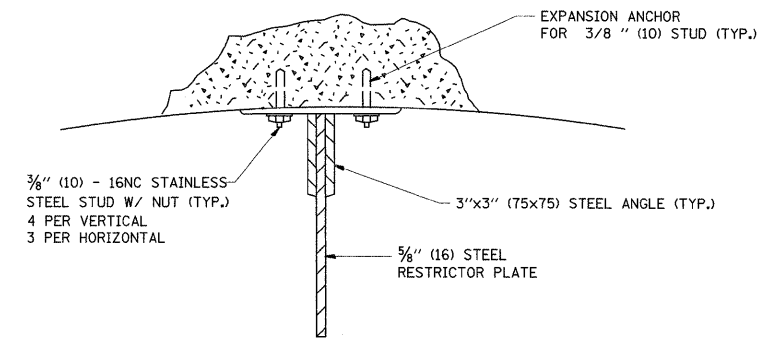
FILE NAME = K:\p199107\1L4301L19\sh_e11.dgn	USER NAME = leuso	DESIGNED -	REVISED -	STATE OF ILLINOIS DEPARTMENT OF TRANSPORTATION	DRAINAGE AND EROSION CONTROL NOTES	F.A.P RTE. 345	SECTION 2008-036 LS	COUNTY COOK	TOTAL SHEETS 8	SHEET NO. 8
	PLOT SCALE = 50.0000' / IN.	DRAWN -	REVISED -							
	PLOT DATE = 8/26/2008	CHECKED -	REVISED -		SCALE:	SHEET NO.	OF	SHEETS	STA.	TO STA.
		DATE -	REVISED -							
										CONTRACT NO. 60E77
										FED. ROAD DIST. NO. ILLINOIS FED. AID PROJECT



STEEL ANGLE BOLTING DETAILS



NOT TO SCALE

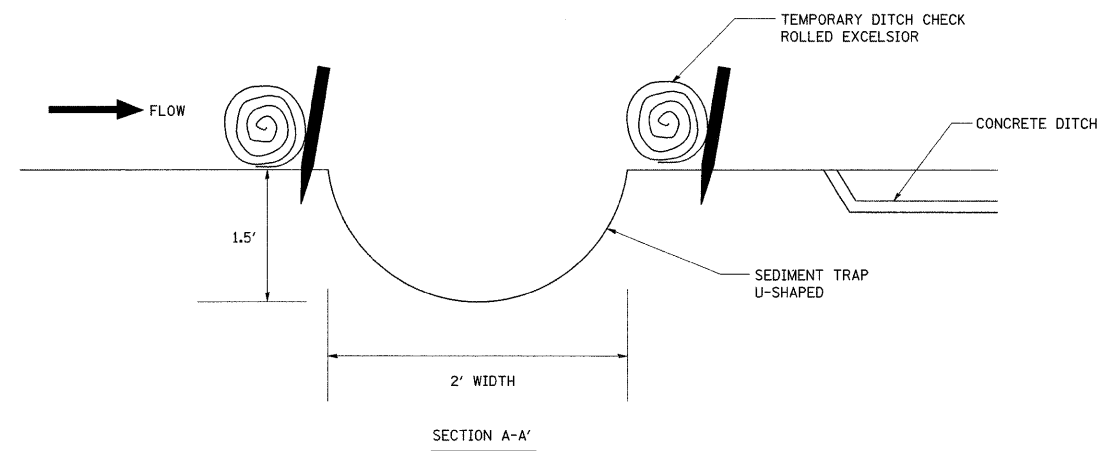
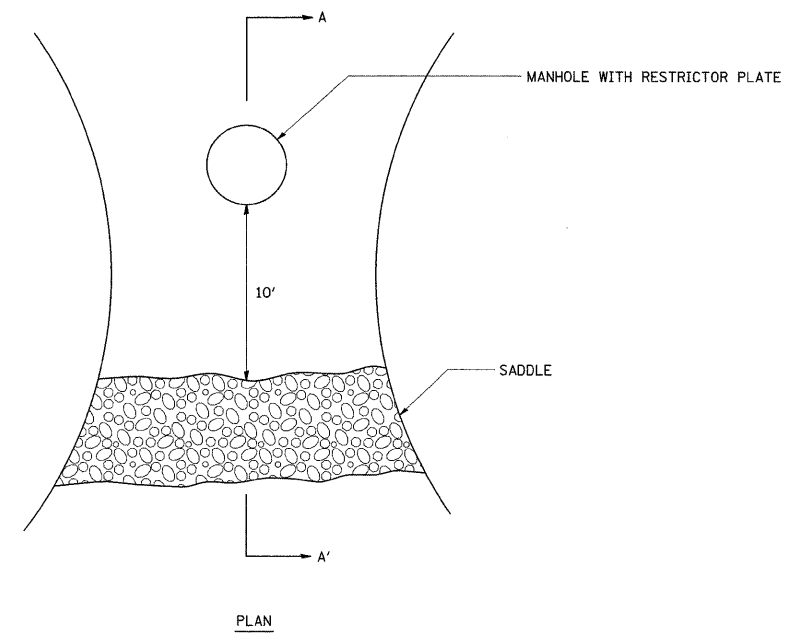
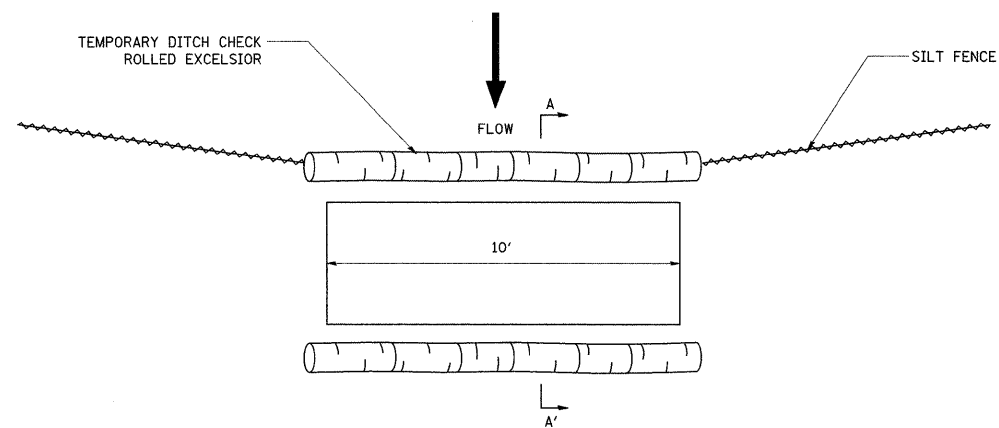


ANGLE FASTENER DETAIL

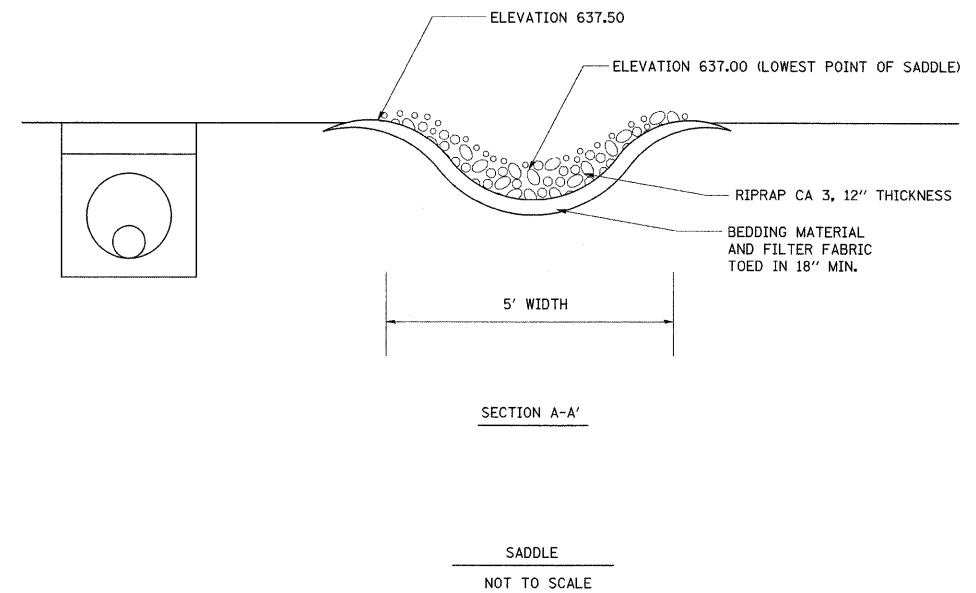
NOTES:

1. ALL STEEL ANGLES AND PLATES TO BE GALVANIZED AFTER FABRICATION.
2. ALL RESTRICTOR PLATES, ANGLES AND HARDWARE TO BE INCLUDED IN THE COST OF THE MANHOLE.
3. BASIS OF PAYMENT: "MANHOLES, TYPE A, 4' DIAMETER, TYPE 8 GRATE, RESTRICTOR PLATE"

FILE NAME = K:\p199107\1L436IL19\sh.o11.dgn	USER NAME = lejasa	DESIGNED -	REVISED -	STATE OF ILLINOIS DEPARTMENT OF TRANSPORTATION	RESTRICTOR DETAIL			F.A.P. RTE.	SECTION	COUNTY	TOTAL SHEETS	SHEET NO.
PLOT SCALE = 50.0000' / IN.	PLOT DATE = 8/27/2008	DRAWN -	REVISED -					345	2008-036 LS	COOK	10	
		CHECKED -	REVISED -		SCALE: SHEET NO. OF SHEETS STA. TO STA.			FED. ROAD DIST. NO. ILLINOIS FED. AID PROJECT		CONTRACT NO. 60E77		
		DATE -	REVISED -									



SEDIMENT TRAP
NOT TO SCALE



FILE NAME =
K:\p199107\IL43&119\sh.oil.dgn

USER NAME = lcy99

PLOT SCALE = 50.0000' / IN.

PLOT DATE = 8/27/2008

DESIGNED -

DRAWN -

CHECKED -

DATE -

REVISED -

REVISED -

REVISED -

REVISED -

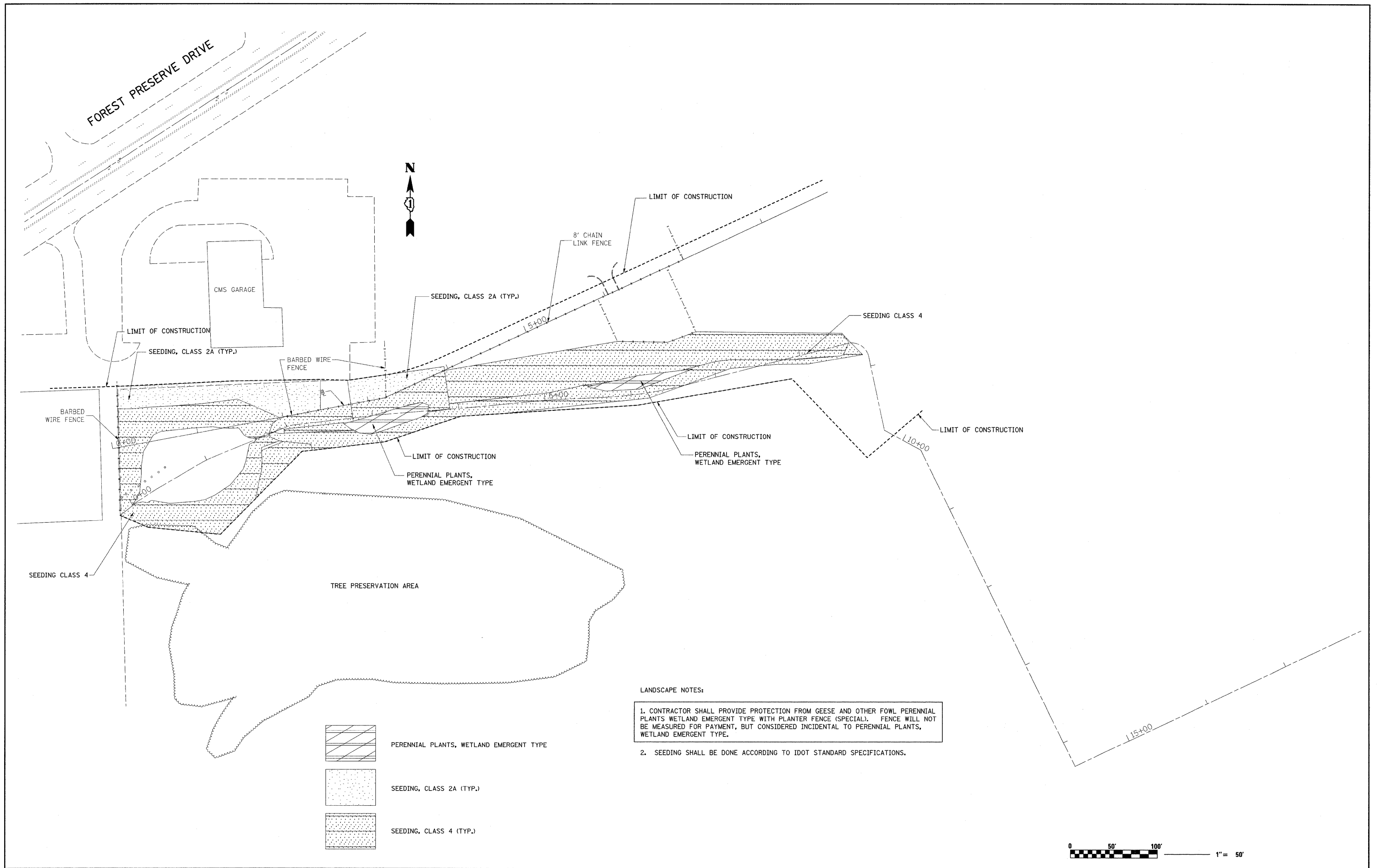
STATE OF ILLINOIS
DEPARTMENT OF TRANSPORTATION

DRAINAGE AND EROSION CONTROL DETAILS
NORTHSIDE MAINTENANCE YARD - IL. RTE. 43 & IL. RTE. 19

SCALE: SHEET NO. OF SHEETS STA. TO STA.


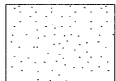
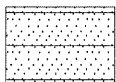
F.A.P. RTE.	SECTION	COUNTY	TOTAL SHEETS	SHEET NO.
345	2008-036 LS	COOK	12	12
CONTRACT NO. 60E77				

FED. ROAD DIST. NO. ILLINOIS FED. AID PROJECT



LANDSCAPE NOTES:

1. CONTRACTOR SHALL PROVIDE PROTECTION FROM GEESE AND OTHER FOWL PERENNIAL PLANTS WETLAND EMERGENT TYPE WITH PLANTER FENCE (SPECIAL). FENCE WILL NOT BE MEASURED FOR PAYMENT, BUT CONSIDERED INCIDENTAL TO PERENNIAL PLANTS, WETLAND EMERGENT TYPE.
2. SEEDING SHALL BE DONE ACCORDING TO IDOT STANDARD SPECIFICATIONS.

-  PERENNIAL PLANTS, WETLAND EMERGENT TYPE
-  SEEDING, CLASS 2A (TYP.)
-  SEEDING, CLASS 4 (TYP.)



FILE NAME = K:\p199107\IL43&IL19\sh_e11.dgn
 USER NAME = legsa
 PLOT SCALE = 50.0000' / IN.
 PLOT DATE = 9/22/2008

DESIGNED -	REVISED -
DRAWN -	REVISED -
CHECKED -	REVISED -
DATE -	REVISED -

**STATE OF ILLINOIS
 DEPARTMENT OF TRANSPORTATION**

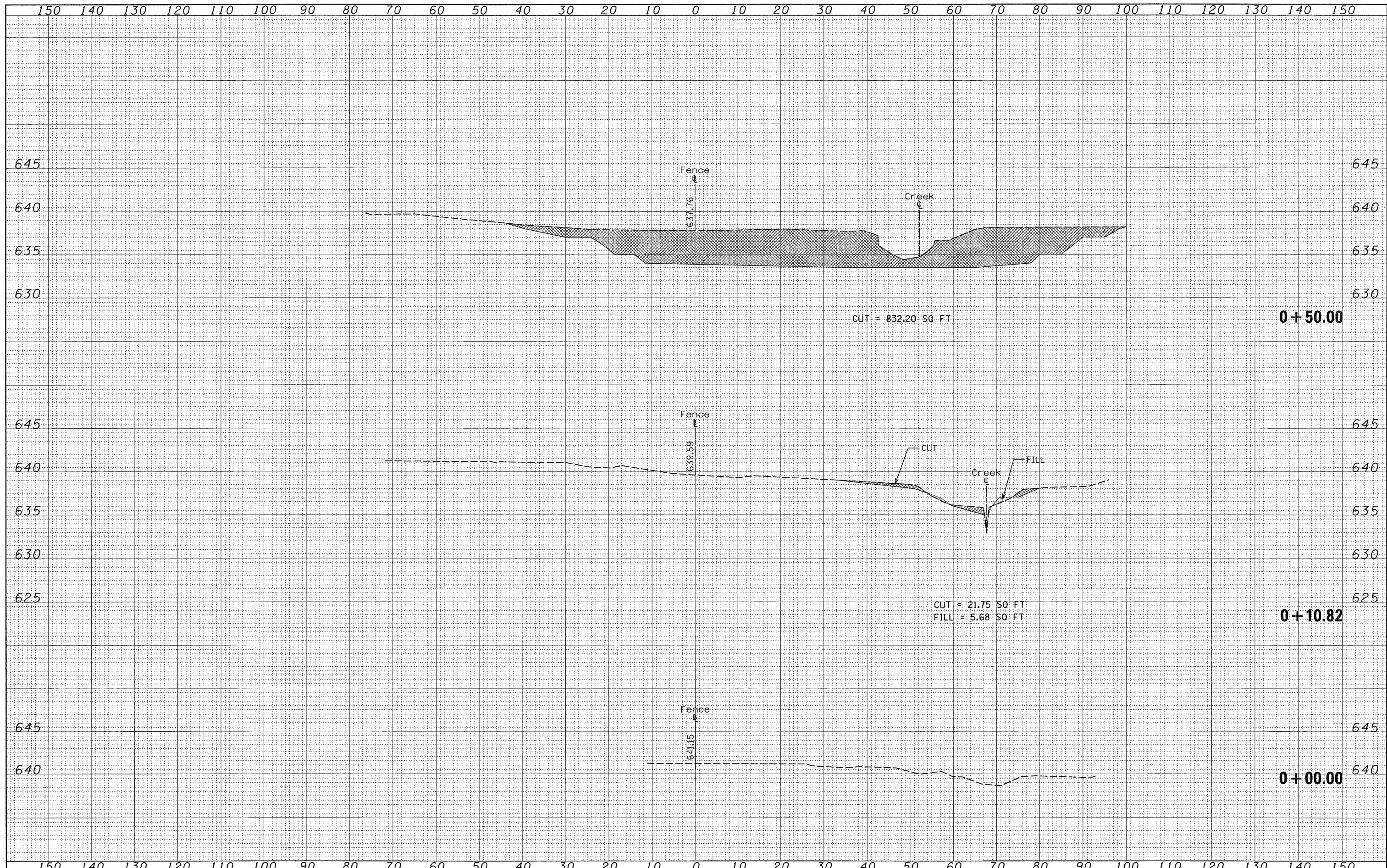
**LANDSCAPING PLAN
 NORTHSIDE MAINTENANCE YARD - IL. RTE. 43 & IL. RTE. 19**

SCALE: 1"=50' SHEET NO. OF SHEETS STA. TO STA.

F.A.P. RTE. 345	SECTION 2008-036 LS	COUNTY COOK	TOTAL SHEETS 13	SHEET NO. 13
FED. ROAD DIST. NO. ILLINOIS FED. AID PROJECT			CONTRACT NO. 60E77	

DATE	
BY	
FINAL SURVEY	
SURVEYED	
PLOTTED	
AREA	
NO.	
NOTE BOOK	
AREAS CHECKED	

DATE	
BY	
ORIGINAL SURVEY	
SURVEYED	
PLOTTED	
AREA	
NO.	
NOTE BOOK	
AREAS CHECKED	



FILE NAME = K:\p199107\1143e\119\ks_maint_drains\ch2.shxdgn
 USER NAME = jaysa
 PLOT SCALE = 10,0000' / IN.
 PLOT DATE = 8/26/2008

DESIGNED -	REVISED -
DRAWN -	REVISED -
CHECKED -	REVISED -
DATE -	REVISED -

**STATE OF ILLINOIS
 DEPARTMENT OF TRANSPORTATION**

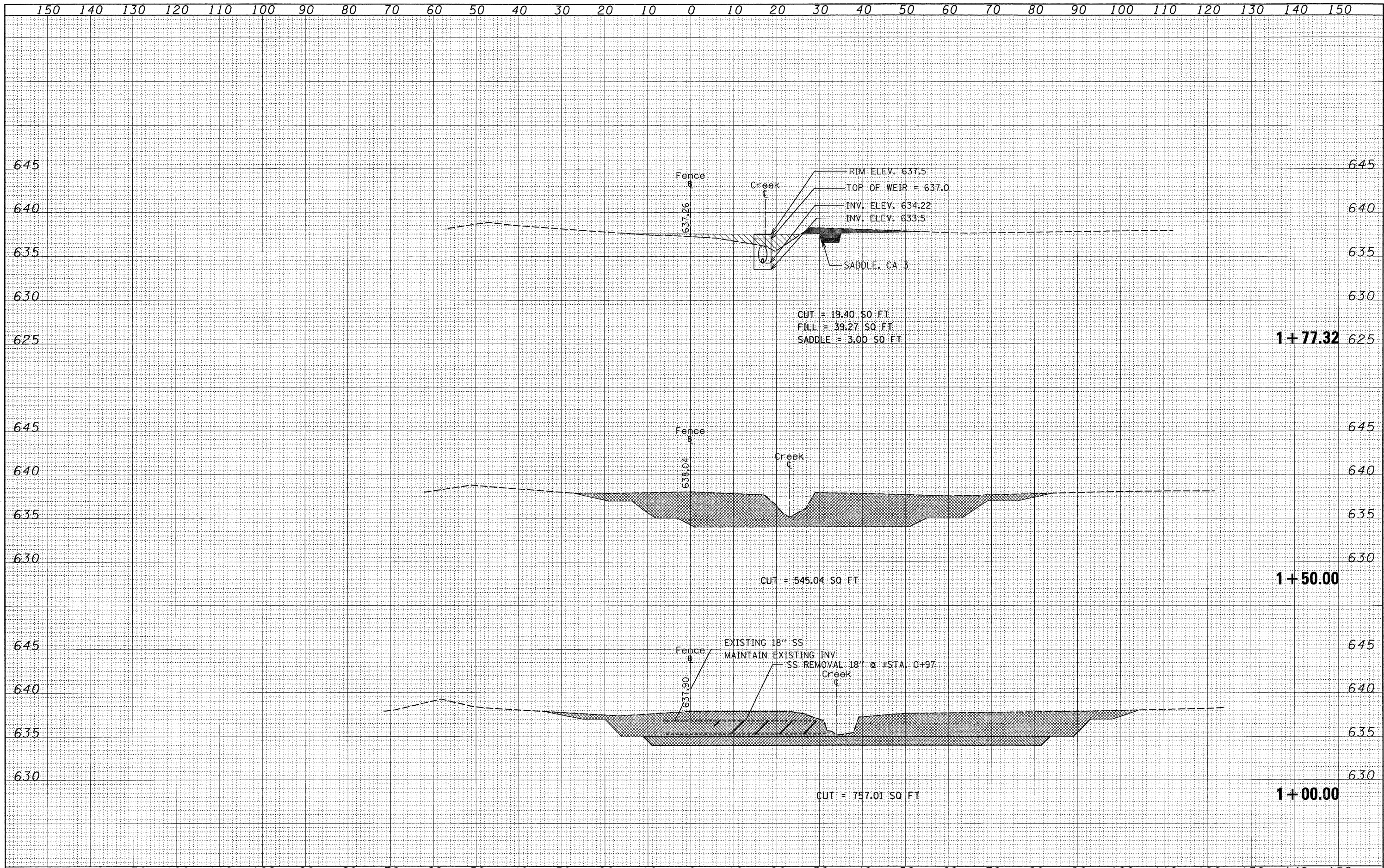
CROSS SECTIONS

SCALE: SHEET NO. OF SHEETS STA. +00.00 TO STA. +50.00

F.A.P. RTE. 345	SECTION 2008-036 LS	COUNTY	TOTAL SHEETS 14	SHEET NO. 14
CONTRACT NO. 60E77				
FED. ROAD DIST. NO. ILLINOIS FED. AID PROJECT				

DATE	
BY	
FINAL SURVEY	
REVISIONS	
NOTE BOOK	
NO.	
AREAS CHECKED	

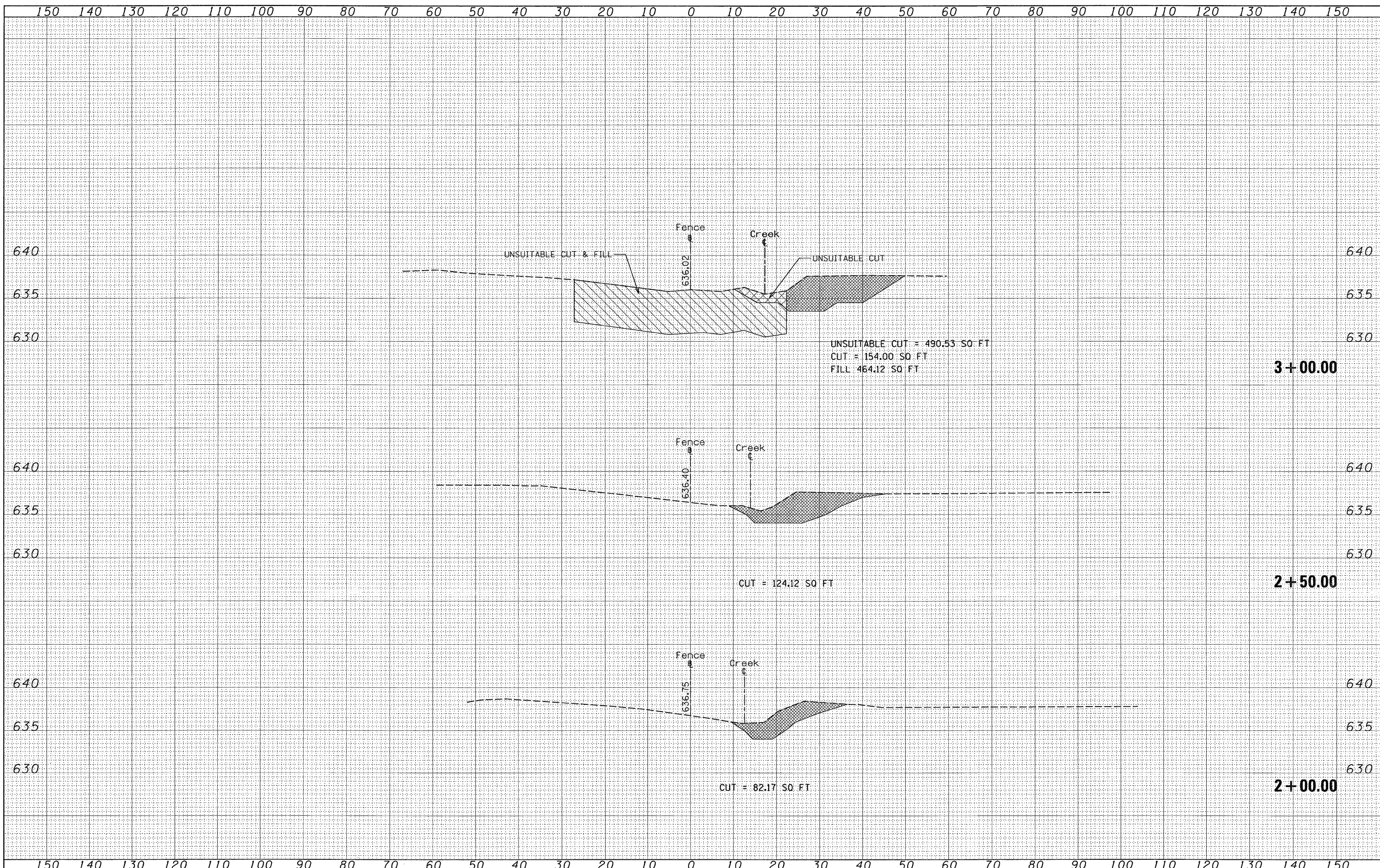
DATE	
BY	
ORIGINAL SURVEY	
REVISIONS	
NOTE BOOK	
NO.	
AREAS CHECKED	



FILE NAME =	USER NAME = delrosar-toms	DESIGNED -	REVISED -	STATE OF ILLINOIS DEPARTMENT OF TRANSPORTATION	CROSS SECTIONS			F.A.P. RTE.	SECTION	COUNTY	TOTAL SHEETS	SHEET NO.
ca\projects\p199\07\143\119\ss_maint_drain\to\2.shdgn		DRAWN -	REVISED -		345	2008-036 LS	COOK	15				
PLOT SCALE = 10.0/199' / IN.		CHECKED -	REVISED -		SCALE:	SHEET NO.	OF SHEETS	STA. 1+00.00	TO STA. 1+77.32	CONTRACT NO. 60E77		
PLOT DATE = 8/27/2008		DATE -	REVISED -		FED. ROAD DIST. NO. ILLINOIS FED. AID PROJECT							

BY _____ DATE _____
 SURVEYED _____
 PLOTTED _____
 NOTE BOOK _____
 AREAS CHECKED _____

BY _____ DATE _____
 SURVEYED _____
 PLOTTED _____
 NOTE BOOK _____
 AREAS CHECKED _____



FILE NAME = K:\p199107\IL430119\ss_maint_drainditch2.shdgn

USER NAME = leysa
 PLOT SCALE = 10,0000' / IN.
 PLOT DATE = 8/26/2008

DESIGNED -
 DRAWN -
 CHECKED -
 DATE -

REVISED -
 REVISED -
 REVISED -
 REVISED -

**STATE OF ILLINOIS
 DEPARTMENT OF TRANSPORTATION**

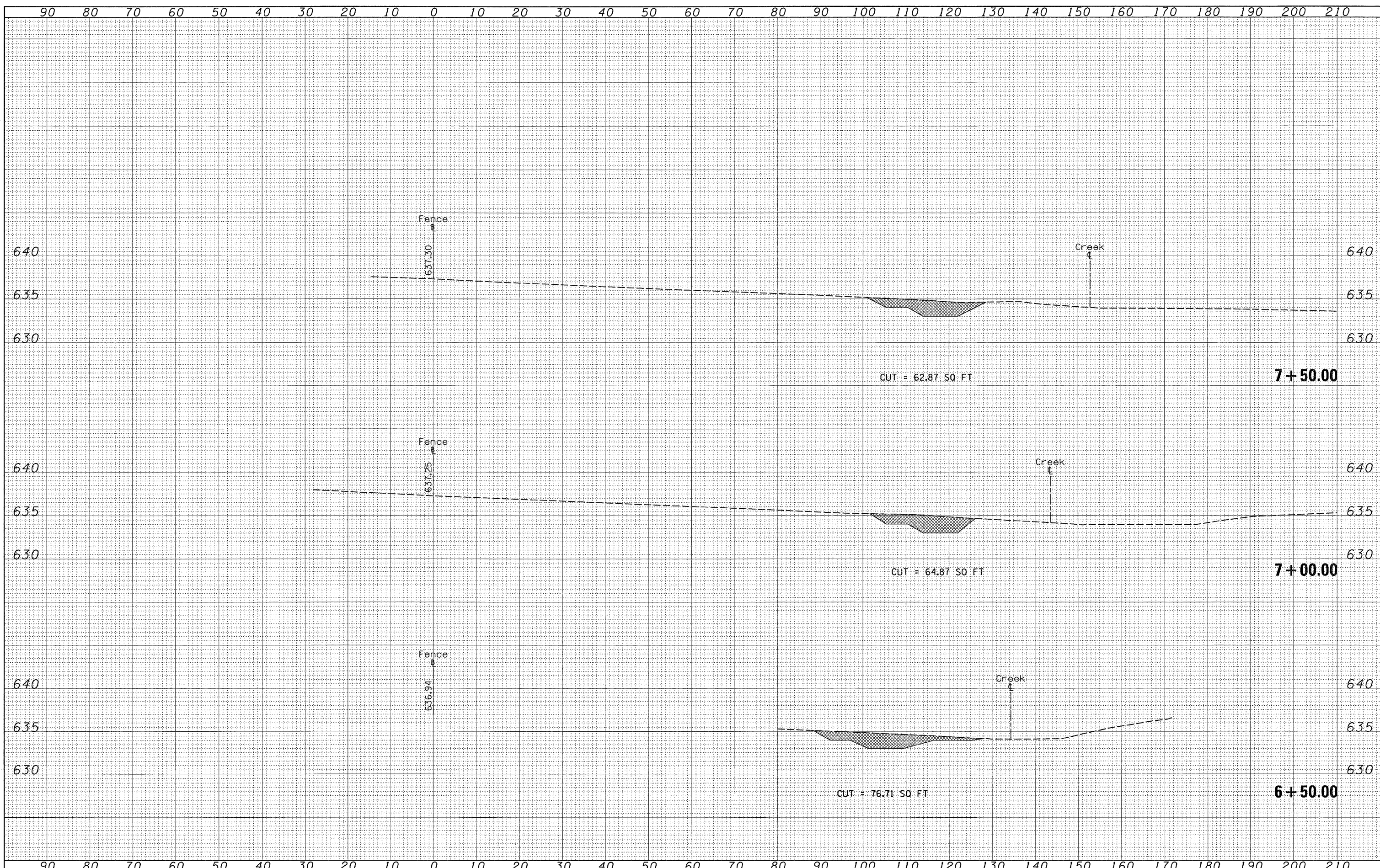
CROSS SECTIONS

SCALE: SHEET NO. OF SHEETS STA. 2+00.00 TO STA. 3+00.00

F.A.P. RTE. 345	SECTION 2008-036 LS	COUNTY COOK	TOTAL SHEETS 16	SHEET NO. 16
CONTRACT NO. 60E77				
FED. ROAD DIST. NO. [ILLINOIS] FED. AID PROJECT				

DATE	
BY	
FINAL SURVEY	
SURVEYED	
PLOTTED	
TEMPLATE	
NOTE BOOK	
NO.	
AREAS CHECKED	

DATE	
BY	
ORIGINAL SURVEY	
SURVEYED	
PLOTTED	
TEMPLATE	
NOTE BOOK	
NO.	
AREAS CHECKED	



FILE NAME = K:\p199107\11.43@119\ss_maint_drainditch2.shxdgn

USER NAME = lcyoo
 PLOT SCALE = 10,0000' / IN.
 PLOT DATE = 8/26/2008

DESIGNED -
 DRAWN -
 CHECKED -
 DATE -

REVISED -
 REVISED -
 REVISED -
 REVISED -

**STATE OF ILLINOIS
 DEPARTMENT OF TRANSPORTATION**

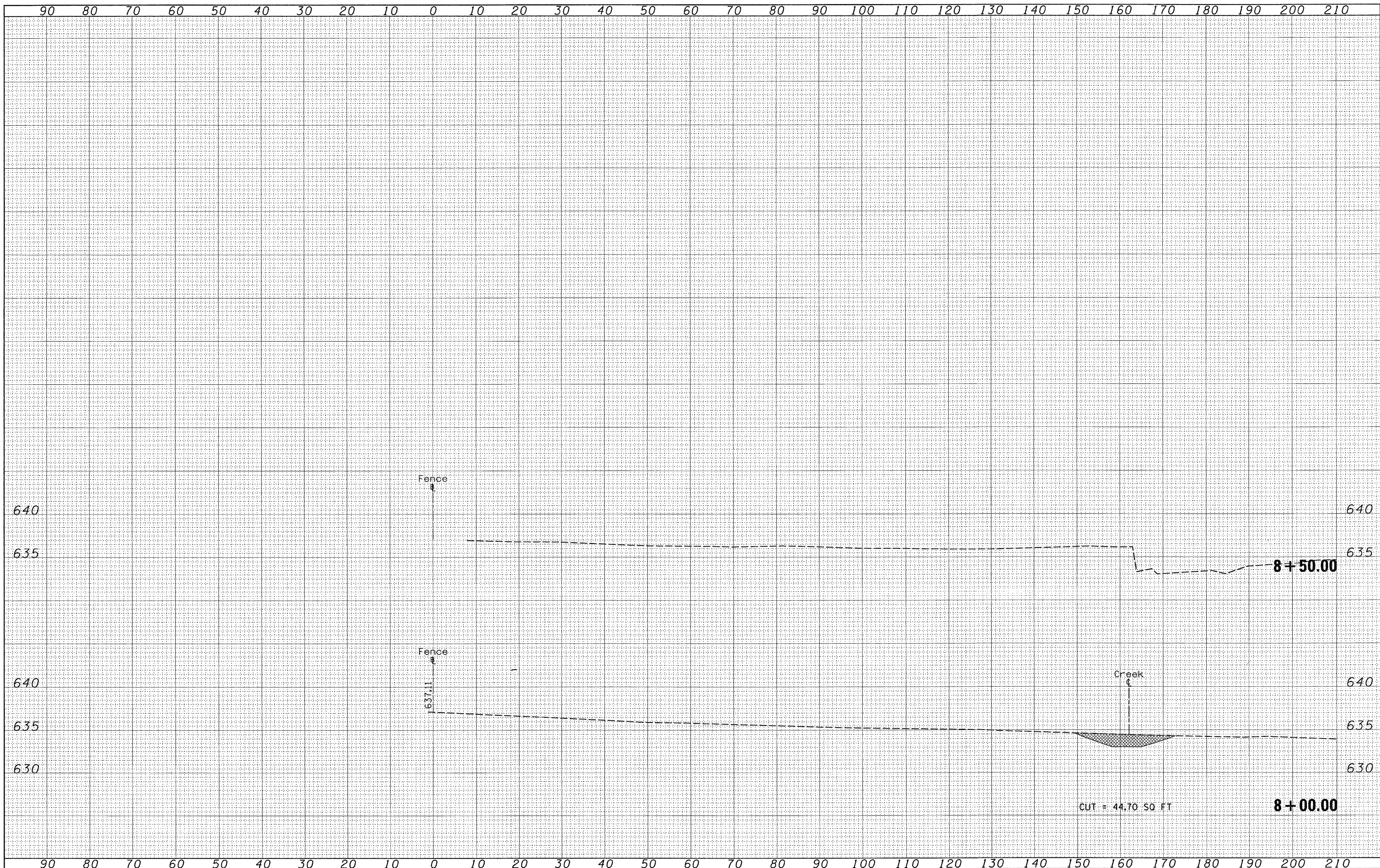
CROSS SECTIONS

SCALE: SHEET NO. OF SHEETS STA. 6+50.00 TO STA. 7+50.00

F.A.P. RTE. 345	SECTION 2008-036 LS	COUNTY COOK	TOTAL SHEETS 19	SHEET NO. 19
CONTRACT NO. 60E77				
FED. ROAD DIST. NO. [ILLINOIS] FED. AID PROJECT				

FINAL SURVEY	SURVEYED	BY	DATE
NOTE BOOK NO.	PLOTTED		
	TEMPLATE		
	AREAS CHECKED		

ORIGINAL SURVEY	SURVEYED	BY	DATE
NOTE BOOK NO.	PLOTTED		
	TEMPLATE		
	AREAS CHECKED		



FILE NAME = K:\p199107\IL430\IL19\vs.mount.drain\tdh2.shxdgn
 USER NAME = leyaa

DESIGNED -
 DRAWN -
 CHECKED -
 DATE - 8/26/2008

REVISED -
 REVISED -
 REVISED -
 REVISED -

**STATE OF ILLINOIS
 DEPARTMENT OF TRANSPORTATION**

CROSS SECTIONS

SCALE: SHEET NO. OF SHEETS STA. 8+00.00 TO STA. 8+50.00

F.A.P. RTE. 345	SECTION 2008-036 LS	COUNTY COOK	TOTAL SHEETS 20	SHEET NO. 20
FED. ROAD DIST. NO. ILLINOIS FED. AID PROJECT			CONTRACT NO. 60E77	