

ROUTE	SECTION	COUNTY	TOTAL SHEETS	SHEET NUMBER
FAP 330	2008-040 I	WILL	5	1

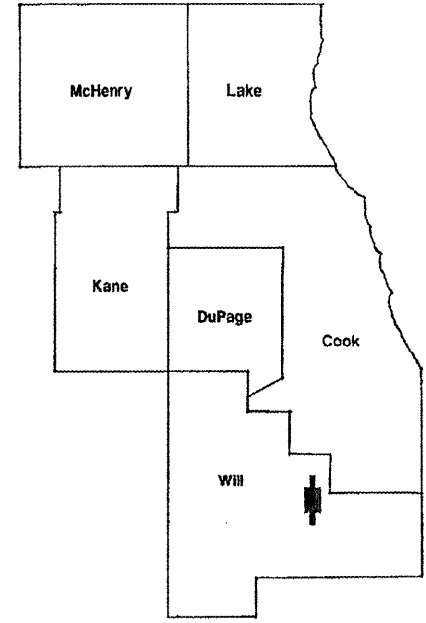
FOR INDEX OF SHEETS SEE SHEET 2

CONTRACT NO. 60E84
D-91-530-08

STATE OF ILLINOIS
DEPARTMENT OF TRANSPORTATION
DIVISION OF HIGHWAYS
DISTRICT ONE
PROPOSED HIGHWAY PLANS

IMPROVEMENTS ARE
LOCATED IN THE VILLAGE OF
FRANFORT AND FRANKFORT
AND GREEN GARDEN
TOWNSHIPS

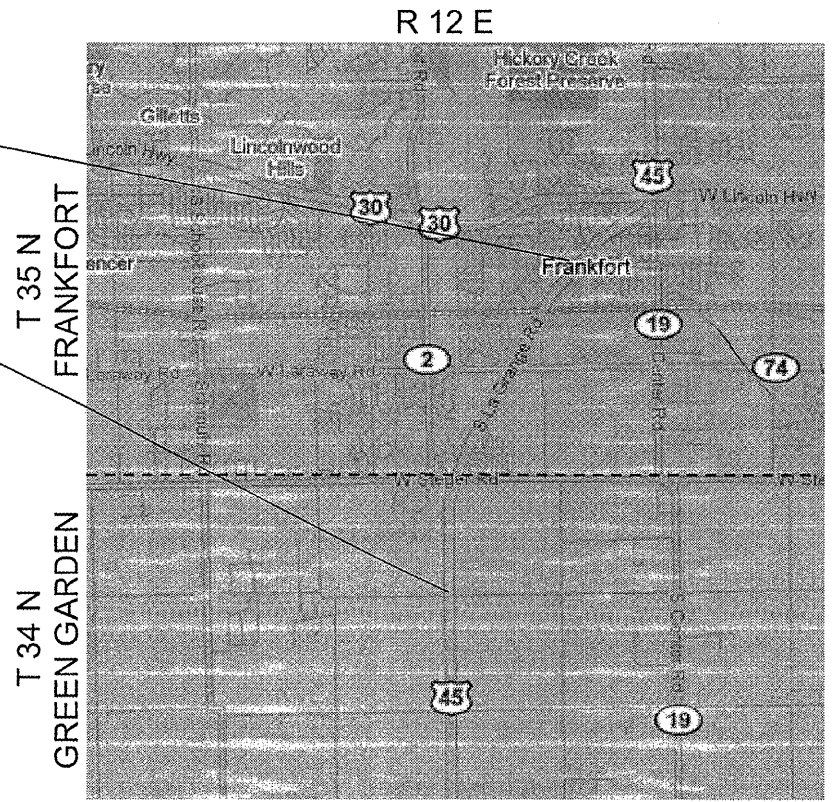
FAP RTE. 330: US 45 (96TH AVE./ LA GRANGE RD.)
NEBRASKA ST. TO STUENKEL RD.
SECTION: 2008-040 I
SHOULDER REPAIR
WILL COUNTY
C-91-530-08



LOCATION OF IMPROVEMENT INDICATED THUS: 

END OF IMPROVEMENT: NEBRASKA ST.

START OF IMPROVEMENT: STUENKEL RD.



GREEN GARDEN TOWNSHIP/ FRANKFORT TOWNSHIP

STATE OF ILLINOIS
DEPARTMENT OF TRANSPORTATION
DIVISION OF HIGHWAYS

SUBMITTED: August 19, 2008
Diane M. O'Keefe
DEPUTY DIRECTOR OF HIGHWAYS, REGION ENGINEER

October 3, 2008
Eric E. Harnik
ENGINEER OF DESIGN AND ENVIRONMENT

October 3, 2008
Christine M. Reed
DIRECTOR OF HIGHWAYS, CHIEF ENGINEER

TRAFFIC DATA: US 45

2007 ADT = 7,300
POSTED SPEED LIMIT = 35-55 MPH

PROJECT ENGINEER ROBERT BORO (847) 705-4178
PROJECT MANAGER KEN ENG

CONTRACT NO. 60E84

**PRINTED BY THE AUTHORITY
OF THE STATE OF ILLINOIS**

J.U.L.I.E.: JOINT UTILITY LOCATION
INFORMATION FOR EXCAVATION
(800) 892-0123 OR 811

GROSS AND NET LENGTH OF IMPROVEMENT = 16,000 LIN. FT. = 3.03 MILES

ROUTE	SECTION	COUNTY	TOTAL SHEETS	SHEET NUMBER
FAP 330	2008-040 I	WILL	5	2

Contract 60E84

INDEX OF SHEETS

- 1 TITLE SHEET
- 2 INDEX OF SHEETS, STATE STANDARDS AND GENERAL NOTES
- 3 SUMMARY OF QUANTITIES
- 4 TYPICAL SECTIONS
- 5 TRAFFIC CONTROL AND PROTECTION FOR SIDE ROADS, INTERSECTIONS AND DRIVEWAYS

STATE STANDARDS

- 701006-02 OFF-ROAD OPERATIONS 2L, 2W, MORE THAN 15' FROM PAVEMENT EDGE
- 701011-01 OFF-ROAD OPERATIONS 2L, 2W, 15' TO 24" FROM PAVEMENT EDGE
- 701101-01 OFF-ROAD OPERATIONS, MULTILANE, 15' TO 24" FROM PAVEMENT EDGE
- 701301-02 LANE CLOSURE 2L, 2W, SHORT TIME OPERATIONS
- 701306-01 LANE CLOSURE 2L, 2W, SLOW MOVING OPERATIONS, DAY ONLY, FOR SPEEDS > 45 MPH
- 701901 TRAFFIC CONTROL DEVICES

GENERAL NOTES

BEFORE STARTING ANY EXCAVATION, THE CONTRACTOR SHALL CALL "J.U.L.I.E." AT (800) 892-0123 OR 811 FOR FIELD LOCATIONS OF BURIED ELECTRIC, TELEPHONE AND GAS UTILITIES. 48 HOUR NOTIFICATION IS REQUIRED.

THE CONTRACTOR SHALL COORDINATE CONSTRUCTION ACTIVITIES WITH UTILITY COMPANIES, VILLAGE OF FRANKFORT.

IT SHALL BE THE CONTRACTOR'S RESPONSIBILITY TO VERIFY ALL DIMENSIONS & CONDITIONS EXISTING IN THE FIELD PRIOR TO CONSTRUCTION & ORDERING OF MATERIALS.

THE CONTRACTOR WILL NOT BE ALLOWED TO SET UP A YARD OR FIELD OFFICE ON STATE PROPERTY WITHOUT WRITTEN PERMISSION FROM THE DEPARTMENT.

THE CONTRACTOR SHALL CONTACT THE DISTRICT ONE TRAFFIC CONTROL SUPERVISOR AT (847) 705-4470 A MINIMUM OF 72 HOURS IN ADVANCE OF BEGINNING WORK.

THE CONTRACTOR SHALL BE REQUIRED TO PROVIDE ACCESS TO ABUTTING PROPERTY AT ALL TIMES DURING THE CONSTRUCTION OF THIS PROJECT.

DO NOT SCALE PLANS FOR CONSTRUCTION DIMENSIONS.

THESE PLANS HAVE BEEN PREPARED FROM NOTES RECEIVED FROM THE BUREAU OF MAINTENANCE.

ILLINOIS DEPARTMENT OF TRANSPORTATION

INDEX OF SHEETS
STATE STANDARDS
GENERAL NOTES

ROUTE	SECTION	COUNTY	TOTAL SHEETS	SHEET NUMBER
FAP 330	2008-040 I	WILL	5	3

CONTRACT NO. 60E84

SUMMARY OF QUANTITIES

*URBAN
100% STATE*

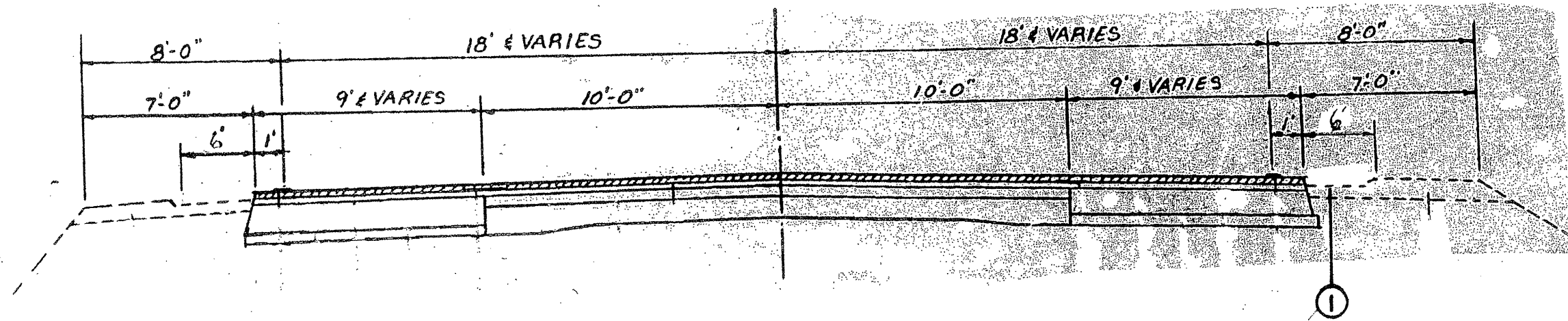
CODE NUMBER	DESCRIPTION	UNIT	TOTAL QUANTITY
20201006	GRADING AND SHAPING SHOULDERS	UNIT	320
48102100	AGGREGATE WEDGE SHOULDER, TYPE B	TON	1185
67000400	ENGINEER'S FIELD OFFICE, TYPE A	CAL MO	3
67100100	MOBILIZATION	L SUM	1
70100460	TRAFFIC CONTROL AND PROTECTION, STANDARD 701306	L SUM	1

ILLINOIS DEPARTMENT OF TRANSPORTATION

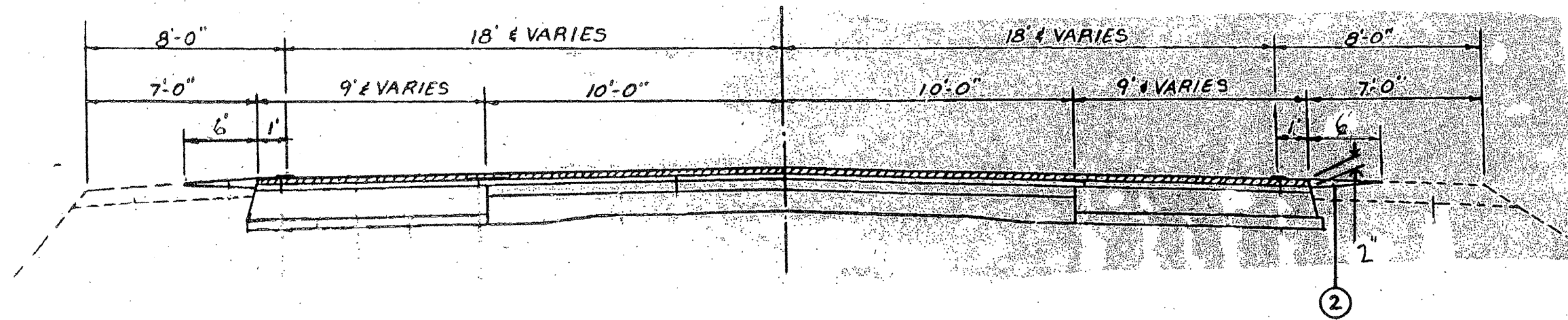
SUMMARY OF QUANTITIES

ROUTE FAP 330	SECTION 2008-040 I	COUNTY WILL	TOTAL SHEETS 5	SHEET NUMBER 4
------------------	-----------------------	----------------	-------------------	-------------------

CONTRACT NO. 60E84



EXISTING TYPICAL SECTION
US 45



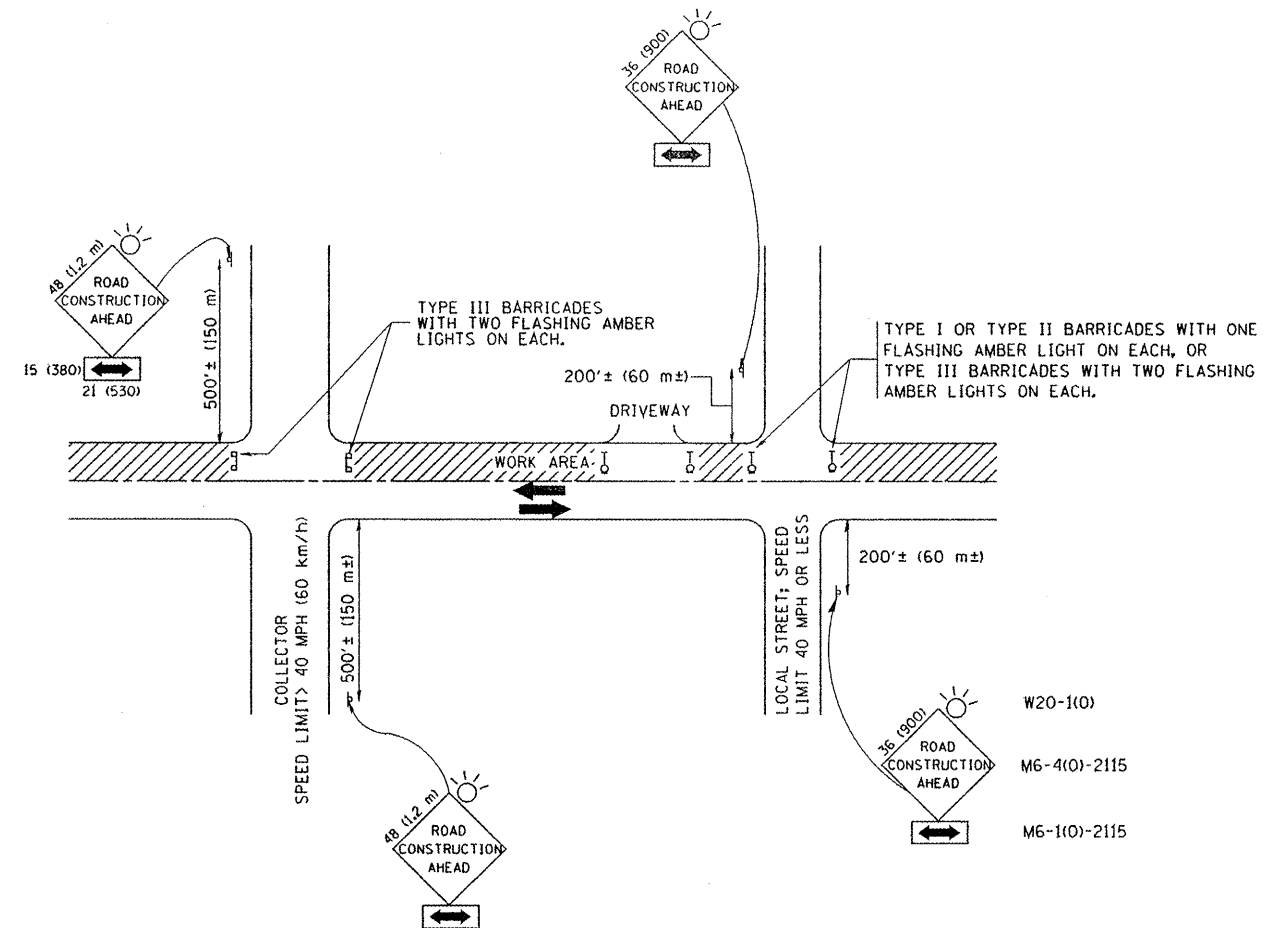
PROPOSED TYPICAL SECTION
US 45

LEGEND

- 1. EXISTING AGGREGATE SHOULDER
- 2. PROPOSED AGGREGATE WEDGE SHOULDER TYPE B

ILLINOIS DEPARTMENT OF TRANSPORTATION

TYPICAL SECTIONS
US 45



TRAFFIC CONTROL AND PROTECTION FOR SIDE ROADS, INTERSECTIONS, AND DRIVEWAYS

NOTES:

- A. FOR NO LANE RESTRICTION ON THE SIDE ROAD OR DRIVEWAYS
- SIDE ROAD WITH A SPEED LIMIT OF 40 MPH (60 km/h) OR LESS AS SHOWN ON THE DRAWING AND AS DIRECTED BY THE ENGINEER:
 - ONE ROAD CONSTRUCTION AHEAD SIGN 36 x 36 (900x900) WITH A FLASHER AND FLAG MOUNTED ON IT APPROXIMATELY 200' (60 m) IN ADVANCE OF THE MAIN ROUTE.
 - THE CLOSED PORTION OF THE MAIN ROUTE SHALL BE PROTECTED BY BLOCKING WITH TYPE I, TYPE II OR TYPE III BARRICADES, 1/3 OF THE CROSS SECTION OF THE CLOSED PORTION.
 - SIDE ROAD WITH A SPEED LIMIT GREATER THAN 40 MPH (60 km/h) AS SHOWN ON THE DRAWING AND AS DIRECTED BY THE ENGINEER:
 - ONE ROAD CONSTRUCTION AHEAD SIGN 48 x 48 (1.2 m x 1.2 m) WITH A FLASHER MOUNTED ON IT APPROXIMATELY 500' (150 m) IN ADVANCE OF THE MAIN ROUTE.
 - THE CLOSED PORTION OF THE MAIN ROUTE SHALL BE PROTECTED BY BLOCKING WITH TYPE III BARRICADES, 1/2 OF THE CROSS SECTION OF THE CLOSED PORTION.
3. WHEN THE SIDE ROAD LIES BETWEEN THE BEGINNING OF THE MAINLINE SIGNING AND THE WORK ZONE, A SINGLE HEADED ARROW (M6-1) SHALL BE USED IN LIEU OF THE DOUBLE HEADED ARROW (M6-4).
- B. FOR A LANE CLOSURE ON A SIDE ROAD OR DRIVEWAY:
- USE APPLICABLE PORTIONS OF THE TYPICAL APPLICATION OF TRAFFIC CONTROL DEVICES (STD. 701501, STD. 701606 OR THE APPROPRIATE STANDARD). THE SPACING OF SIGNS AND BARRICADES SHALL BE ADJUSTED FOR FIELD CONDITIONS AS DIRECTED BY THE ENGINEER. THE DIRECTIONAL ARROW SHALL BE COVERED OR REMOVED WHEN NO LONGER CONSISTENT WITH THE SIDE ROAD LANE CLOSURE.
- C. ADVANCE WARNING SIGNS ARE TO BE OMITTED ON DRIVEWAY UNLESS OTHERWISE NOTED.
- D. THE TRAFFIC CONTROL AND PROTECTION FOR SIDE ROADS, INTERSECTIONS, AND DRIVEWAYS SHALL BE INCIDENTAL TO THE COST OF SPECIFIED TRAFFIC CONTROL STANDARDS OR ITEMS.

All dimensions are in millimeters (inches) unless otherwise shown.

FILE NAME = W:\dietsd\22x34\1c10.dgn	USER NAME = gegljanobt	DESIGNED - LHA	REVISED - J. OBERLE 10-18-95
		DRAWN -	REVISED - A. HOUSEH 03-06-96
		PLOT SCALE = 60.000 1/ IN.	REVISED - A. HOUSEH 10-15-96
		CHECKED -	REVISED - T. RAMMACHER 01-06-00
		PLOT DATE = 1/4/2008	DATE - 06-89

STATE OF ILLINOIS
DEPARTMENT OF TRANSPORTATION

TRAFFIC CONTROL AND PROTECTION FOR SIDE ROADS, INTERSECTIONS, AND DRIVEWAYS			
SCALE: NONE	SHEET NO. 1 OF 1 SHEETS	STA.	TO STA.

F.A.R. RTE.	SECTION	COUNTY	TOTAL SHEETS	SHEET NO.
330	2008-0401	WILL	5	5
TC-10			CONTRACT NO. 6084	
FED. ROAD DIST. NO. 1 ILLINOIS FED. AID PROJECT				